



## Big Data & Analytics

# Data Governance – let's get started

Philip McBride – IBM Data Governance Centre of Excellence

April 2014





## Opening comments...

Implementing a Data Governance strategy, in for particular Data Security & Data Privacy, isn't hard.

It is possible to start small & extend and still be effective.

Some elements of data governance are now mandatory.

Let's take a look at how you could get started.





And before we begin, this makes me very angry!

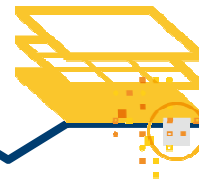


# 6 Things to ask your Organisation about Data Governance

Do you have a champion?



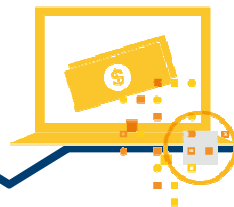
Have you surveyed your situation?



Do you have a Data Governance strategy.. *anywhere?*



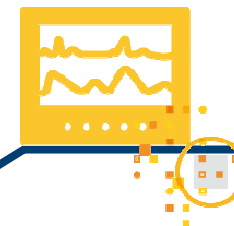
Have you calculated the value of your data?



Do you know the probability of risk?



Are you monitoring the efficacy of your controls?



## IBM Data Governance – *Primary elements*



Define the business problem



Obtain executive sponsorship



Conduct a maturity assessment



Build a roadmap  
(current state > desired state)



Design an organisational  
blueprint/structure



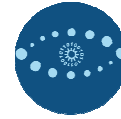
Build the data dictionary



Understand the data (relationships)



Create a metadata repository



Define metrics





## IBM Data Governance – *Optional elements*

- Govern Master Data
- Govern Analytics
- Govern Security & Privacy
- Govern Information Lifecycle





## IBM Data Governance – Guidance for *Govern Security & Privacy*



Align with key stakeholders



Review enterprise security blueprint



Tighten database change controls



Discover, define & classify sensitive data



Review sensitive data encryption requirements



Protect sensitive data in production **AND**  
non-production environments





## Choose the relevant tool sets



### Guardium Database Activity Monitoring

Identify unauthorised or suspicious activities by continuously monitoring access to databases, data warehouses, Hadoop systems and file share platforms in real-time.



### Optim Data Privacy

Mask data statically or dynamically in applications, databases and Big Data solutions across production and nonproduction environments



### Discovery

Analyse the data values and patterns from one or more structured data sources, to discover hidden relationships, transformations and business rules and bring them clearly into view.







# Thank you

[mcbridep@au.ibm.com](mailto:mcbridep@au.ibm.com)

+61414 – 955 - 075

**Big Data & Analytics**