



IBM's System z Forum



Extreme Performance for Complex Business Analytics

IBM DB2 Analytics Accelerator

DB2 Analytics Accelerator

Accelerating decisions to the speed of business

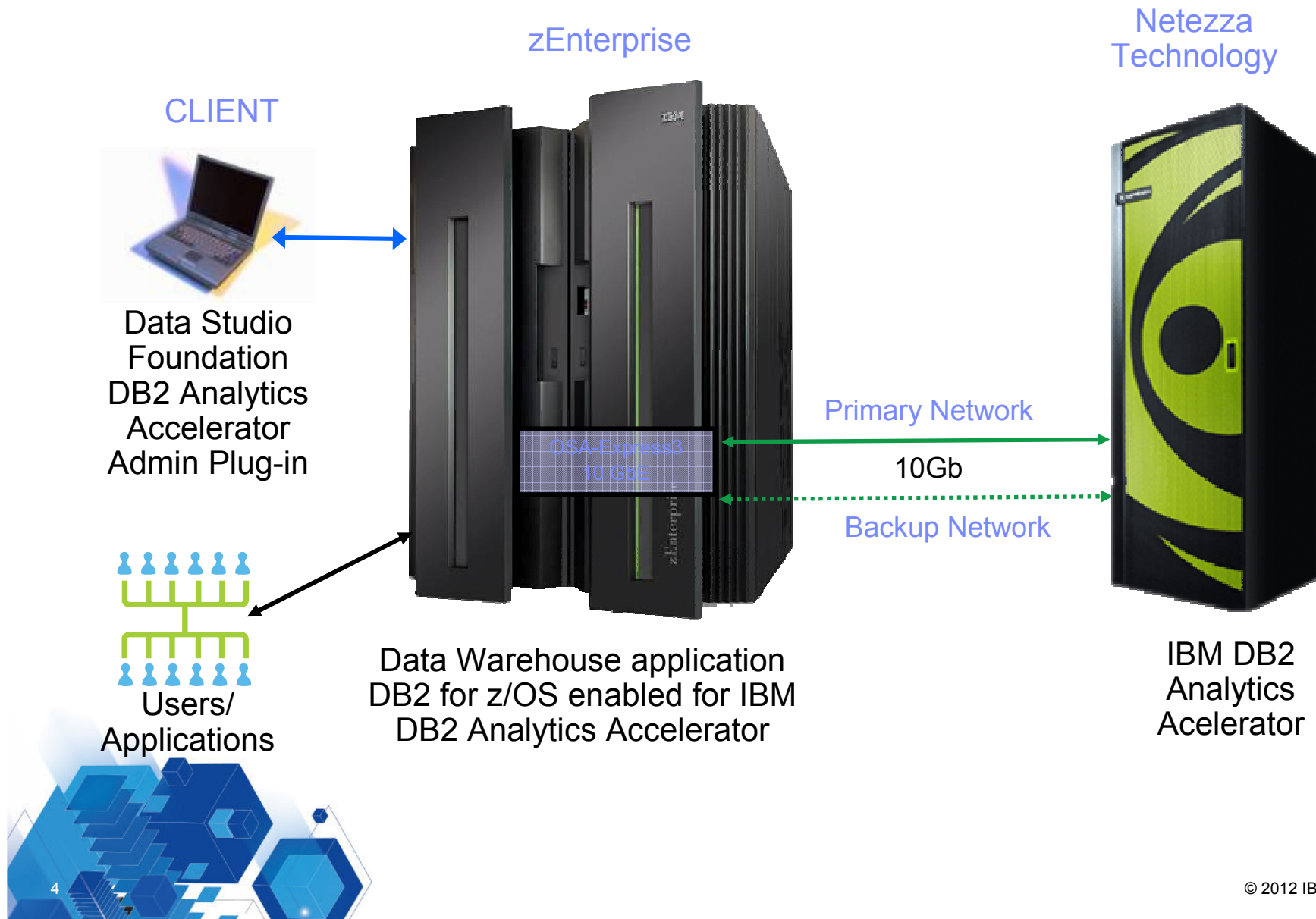
Blending System z and Netezza technologies to deliver unparalleled, mixed workload performance for complex analytic business needs.

■ Get more insight from your data

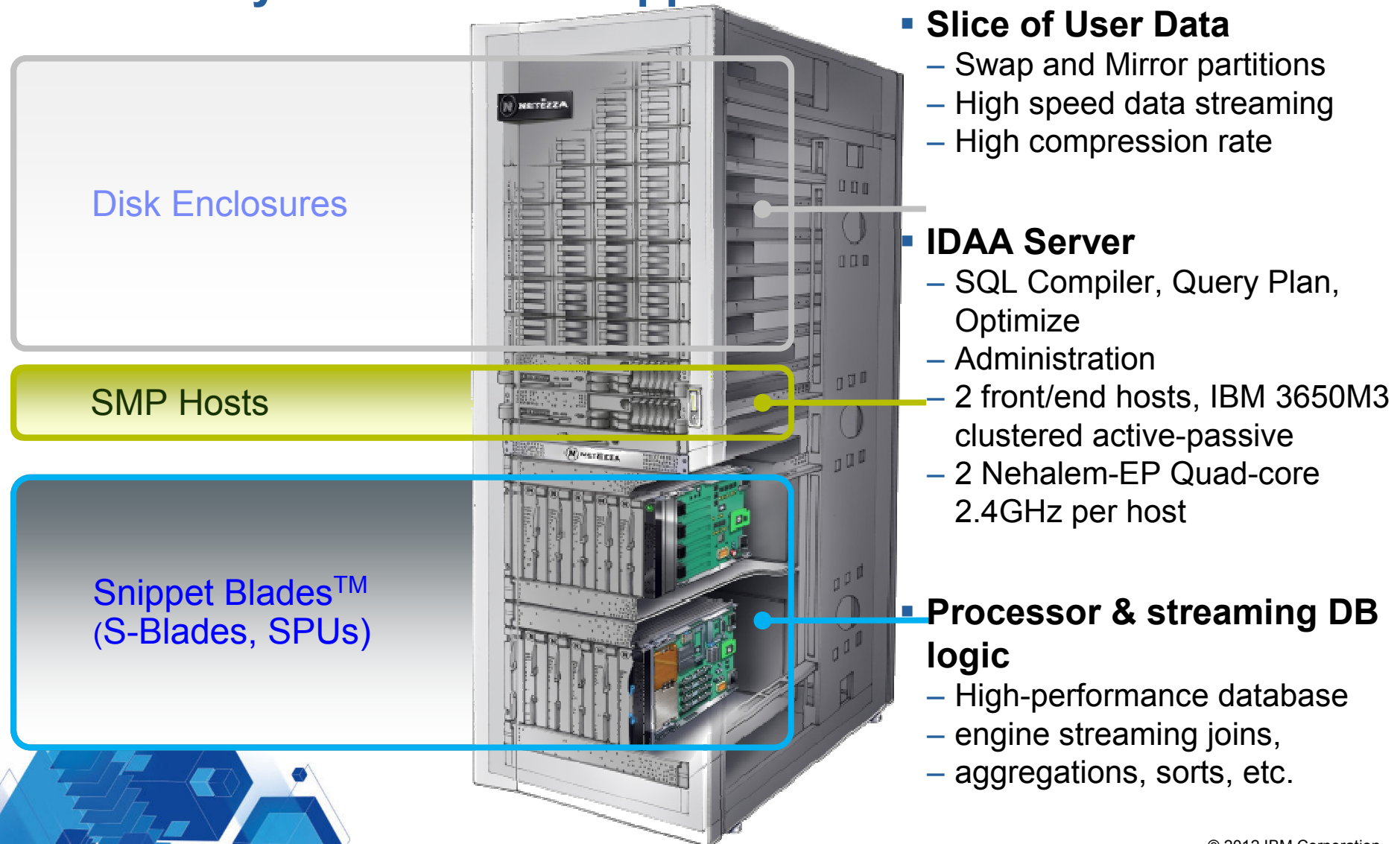
- Fast, predictable response times for “right-time” analysis
- Accelerate analytic query response times
- Improve price/performance for analytic workloads
- Minimize the need to create data marts for performance
- Highly secure environment for sensitive data analysis
- Transparent to the application



IBM DB2 Analytics Accelerator V2 Components



DB2 Analytics Accelerator V2 Powered by Netezza 1000 Appliance



Fast Time to Value

- **IBM DB2 Analytics Accelerator (Netezza 1000-12)**

- Production ready - 1 person, 2 days

- **Table Acceleration Setup ... 2 Hours**

- DB2 “Add Accelerator”
- Choose a Table for “Acceleration”
- Load the Table (DB2 copy to Netezza)
- Knowledge Transfer
- Query Comparisons

- **Initial Load Performance ...**

- 400 GB “Loaded” in 29 Min
- 570 million rows (Loads of 800GB to 1.3TB/Hr)

- **Actual Query Acceleration ... 1908x faster**

- 2 Hours 39 Minutes to 5 Seconds

- **CPU Utilization Reduction**

- 35% to ~0%

- **Actual customer results, October 2011**



Performance & Savings

			DB2 Only		DB2 with IDAA		Times Faster
Query	Total Rows Reviewed	Total Rows Returned	Hours	Sec(s)	Hours	Sec(s)	
Query 1	2,813,571	853,320	2:39	9,540	0.0	5	1,908
Query 2	2,813,571	585,780	2:16	8,220	0.0	5	1,644
Query 3	8,260,214	274	1:16	4,560	0.0	6	760
Query 4	2,813,571	601,197	1:08	4,080	0.0	5	816
Query 5	3,422,765	508	0:57	4,080	0.0	70	58
Query 6	4,290,648	165	0:53	3,180	0.0	6	530
Query 7	361,521	58,236	0:51	3,120	0.0	4	780
Query 8	3,425,29	724	0:44	2,640	0.0	2	1,320
Query 9	4,130,107	137	0:42	2,520	0.1	193	13

Actual customer results, October 2011

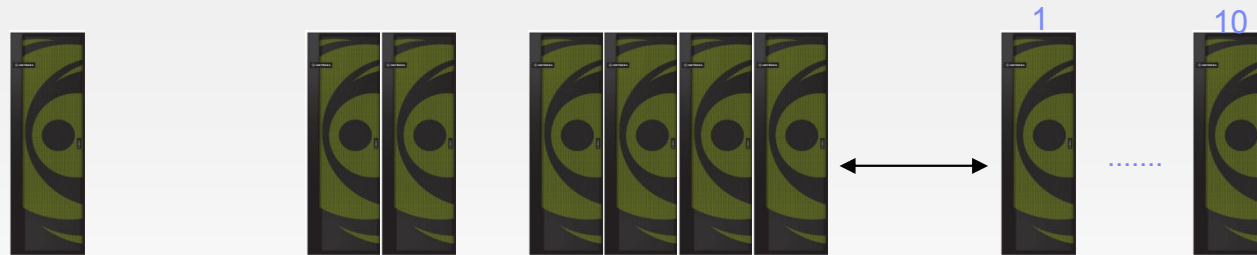
- Queries run faster
 - Save CPU resources
 - People time
 - Business opportunities

- DB2 Analytics Accelerator: “we had this up and running in days with queries that ran over 1000 times faster”
- DB2 Analytics Accelerator: “we expect ROI in less than 4 months”

Accelerating decisions to the speed of business



Netezza 1000 Appliance Scalability



	1000-3	1000-6	1000-12	1000-24	1000-36	1000-48	1000-72	1000-96	1000-120
Cabinets	1/4	1/2	1	2	3	4	6	8	10
Processing Units	24	48	96	192	288	384	576	768	960
Capacity (TB)	8	16	32	64	96	128	192	256	320
Effective Capacity (TB)*	32	64	128	256	384	512	768	1024	1280

Current IDAA Platforms

Future



Predictable, Linear Scalability throughout entire family

Capacity = User Data space
 Effective Capacity = User Data Space with compression

*: 4X compression assumed

Why Both?

Marrying the best of both worlds

IBM
System z



Mixed Workload System

IBM
Netezza



Focused Appliance

Very diverse workload

Very focused workload



Tailored to your needs

A Hybrid Solution

IBM
System z with
IBM DB2 Analytics Accelerator

IBM
Netezza

Mixed Workload System

- Mixed workload system z with operational transaction systems, data warehouse, operational data store, and consolidated marts
- Unmatched availability, security and recoverability
- Natural extension to System z to enable pervasive analytics across the organization
- Speed and ease of deployment and administration

Focused Appliance

- Appliance with a streamlined database and HW acceleration for performance critical functionality
- Price/performance leader
- Speed and ease of deployment and administration
- Optimized performance for deep analytics, multifaceted, reporting and complex queries

Flexibility

The right mix of simplicity and flexibility

Simplicity

The Ultimate Consolidation Platform



■ Bringing it all together

- Better Business Response
- Reduced Costs
- More Available
- More Secure
- Reduced Data Movement
- Reduced Data Latency
- Reduced Complexity
- Reduced Resources

Thank You





© Copyright IBM Australia Limited 2012. ABN 79 000 024 733. © Copyright IBM Corporation 2012. All Rights Reserved.

TRADEMARKS: IBM, the IBM logos, ibm.com, smarter planet and the planet icon are trademarks of IBM Corporation registered in many jurisdictions worldwide. Other company, product and services marks may be trademarks or services marks of others. A current list of IBM trademarks is available on the Web at "Copyright and trademark information" at www.ibm.com/legal/copytrade.shtml.

IMPORTANT PRIVACY INFORMATION: If you or your organisation would prefer not to receive further information on IBM products, please advise us on 132 426 (Australia) or 0800 444 714 (New Zealand). If you would like IBM Australia Limited to refrain from sending you commercial electronic messages you may send an unsubscribe message to contact@au1.ibm.com. The sending of this message was authorised by IBM Australia Limited, and IBM Australia Limited can be contacted at rlm@au1.ibm.com or on 132 426 (Australia) or 0800 801 800 (New Zealand). IBM may store data on international servers used by it. GL_13679