

# System z software Q2 Announcements

## Using the Latest Technology to Gain Business Efficiency

**Steve Talbot-Walsh,**  
Senior System z s/w IT Architect (zSWITA), zEvangelist and zChampion

May 2012



---

## IBM z/OS Statement of Direction (SOD) – April 11, 2012

- IBM is announcing a new version of z/OS, Version 2 (v2), with the first release, v2.1, to be available 2H 2013. There will be no new release of z/OS in 2012.
- New 2-year release cycle to provide more complete functionality with more visible value. Customers will also have more time to digest new functionality.
- Support for select items between releases (e.g. new hardware) will be made available through the service stream, as in SPE's or through web-based deliverables.
- The n-2 coexistence policy (migration, coexistence and fallback) that customers enjoy today will continue. Customers will be able to migrate from z/OS v1.13 and from z/OS v1.12 to z/OS v2.1.
- z/OS v1.13 will be orderable until z/OS v2.1 becomes generally available
- New 5-year basic support model (instead of 3) and a new extended optional fee-based service offering for 3 years (instead of 2). This will be known as the “5+3” model.

Contd.

---

## IBM z/OS Statement of Direction (SOD) – April 11, 2012

- Adjustments to the support for the following releases will be made in order to allow customers to bridge more seamlessly to z/OS v2.1 ...
  - z/OS v1.12 support will be 4 years instead of 3 years (through Sept 30, 2014)
  - z/OS v1.13 support is planned to be available for 5 years instead of 3 years (through Sept 30, 2016)
- The Lifecycle Extension for z/OS v1.11 is announced with 2 years of support
- z/OS v2.1 is intended to take maximum advantage of current hardware. As such, z/OS v2.1 (and above) will IPL only on a System z9 and later mainframe servers and storage support will be available only for 3990 model 3 control units and later.

For more information please see z/OS SOD FAQ ...

<http://public.dhe.ibm.com/common/ssi/ecm/en/zsq03055usen/ZSQ03055USEN.PDF>

## IBM Server Product Services for System z - Effective July 6, 2012

- IBM Implementation Services for System z – CustomPac (offering id: 6948-A46) will no longer be available in geographies other than EMEA. Orders will only be fulfilled for EMEA after July 6, 2012.
- The following related products will be removed from IBM Shopz (and the software configurator) for all geographies other than EMEA ...
  - **5751-CS4 - SystemPac**
  - **5751-CS5 - ProductPac**
  - **5751-CS7 - RefreshPac**
- The replacements are as following ...
  - **SystemPac** - Use IBM ServerPac (5751-CS9) with additional on-site services via IBM Implementation Services for System z – onsite daily assist (6948-M10).
  - **ProductPac** - Use IBM CBPDO (5751-CS3) with additional on-site services via IBM Implementation Services for System z – onsite daily assist (6948-M10).
  - **RefreshPac** - Order the maintenance deliverables via Shopz and supplement with additional on-site services via IBM Implementation Services for System z – onsite daily assist (6948-M10).

## The inefficiencies of traditional computing get in the way



“Our IT systems have become complex and difficult to manage, and as a consequence IT is increasingly finding itself in the position of being a barrier to innovation rather than an enabler of it.”

-The Bathwick Group, The road to Smarter Computing


<sup>1</sup> Enterprise Systems Journal, “5 Best Practices for Reducing IT Complexity”

<sup>2</sup> IDC Analyst Matt Eastwood, IDC Directions Presentation, 2011


<sup>3</sup> IBM Market Intelligence Time-To-Value Study, National Analysts, November 2011

# Continuing the growth momentum with zEnterprise


## New! Case studies




**TVB**  
(HongKong)




**BADER**  
MODE. WOHNEN. LEBEN.  
(Germany)



**Swiss Re**  
(Switzerland)



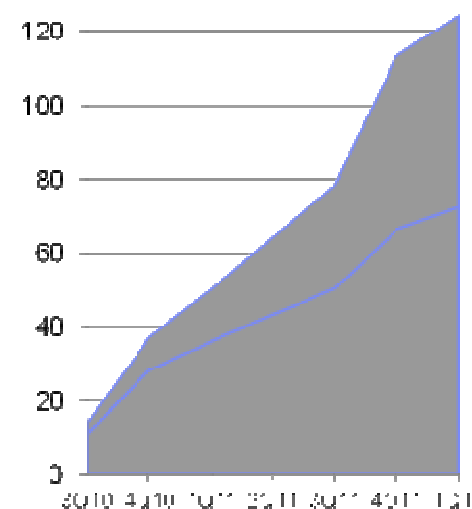
**INDIANA FARM BUREAU INSURANCE**  
(USA)



**Z22S**  
ZAVOD ZA ZDRAVSTVENO ZAVAROVANJE SLOVENIJE  
(Slovenia)

1Q success

## 120+ new System z accounts in less than 24 months



Delivered **back-to-back revenue growth** externally over the last two years, the first time since 2003 / 2004.

## System z is solving inefficiencies with Q2 announcements

<p>Lower cost of operations and maintenance</p>		<p>OMEGAMON XE for DB2 Performance Expert Tivoli Workload Scheduler Solutions Tivoli System Automation Solutions IMS Catalog, IMS Tools</p>
<p>Optimize application development and deployment</p>		<p>Rational Development and Test Environment for System z Rational Application Developer v8.5 IBM Integrated solution for System z development CICS Transaction Server Open Beta, CICS Tools WebSphere Service Registry and Repository WebSphere Application Server for z/OS and Linux WebSphere BPM Solutions</p>
<p>Reduce complexity</p>		<p>DB2 10 for z/OS In-Transaction scoring DB2 10 Tools WebSphere Portal V8.0 IBM Intranet and Customer Experience Suites</p>

**Less than \$1 per day**  
per Linux on z virtual server

Revitalizing applications result in up to  
**35% reduction** in managing and maintaining applications



## Expert insight into application performance for DBAs

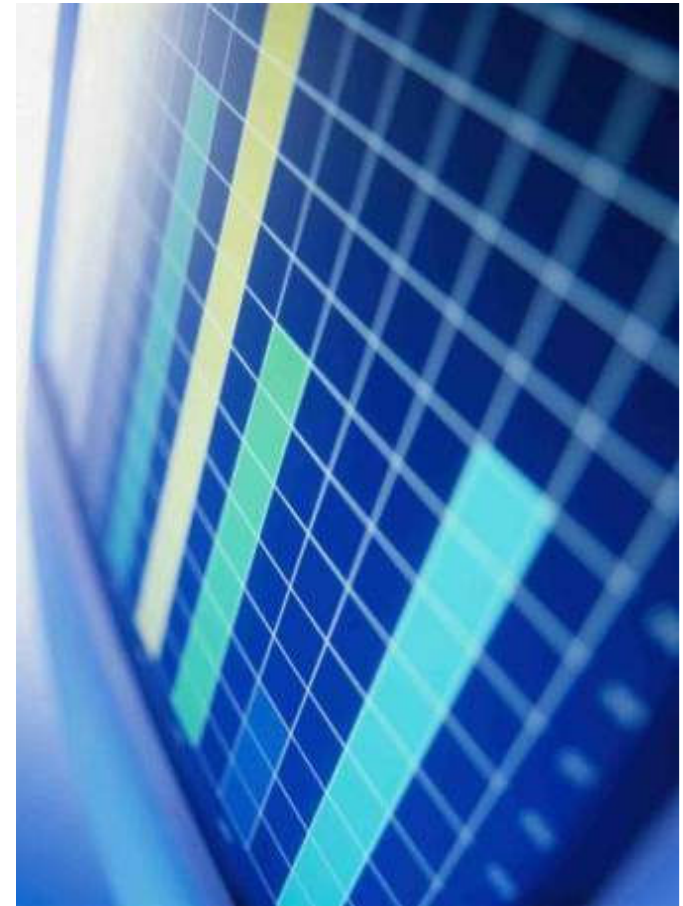
Tivoli OMEGAMON XE for DB2 Performance Expert on z/OS

Tivoli OMEGAMON XE for DB2 Performance Monitor on z/OS

New!

- **Visibility into IBM DB2 Analytics Accelerator (IDAA)** delivering query results for 'Train of Thought' analysis
  - Maximize your organization's ROI from appliances
- **Quickly and concisely identify** primary contributor to poor distributed application response time with *Extended Insight*
  - Single web-UI display with response time metrics
  - Reduce time chasing down problems that turn out to not be DB2
- **Unlock performance of DB2 Stored Procedures** with new displays
  - Improve performance for multiple applications simultaneously with increased visibility

*OMEGAMON family can reduce fix times from 90 minutes to **2 minutes***





## Significant usability and productivity for applications in a cloud

### Tivoli System Automation for z/OS V3.4 Tivoli Workload Scheduler Solutions



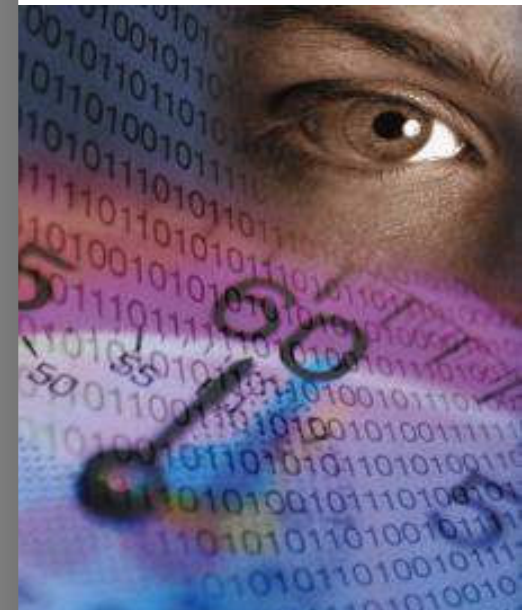
**Tivoli System Automation for z/OS V3.4** offers a single point of control for full range of systems management

- **NEW!** Autodiscovery tool, Enhanced joblog visibility, staged system IPLs, and topology views of related resources
- **NEW!** zEnterprise, including zBX, support speeds Enterprise automation by 90%

### Tivoli Workload Scheduler for Applications V8.6 Enhanced Tivoli Workload Scheduler 8.6 Enhanced Tivoli Workload Scheduler for z/OS 8.6

Provides orchestration of workflows for resource provisioning and traditional batch processes in private and hybrid clouds

- **NEW!** Self-Service Catalog Interface allows business users to manage business services on-demand
- **NEW!** Integration with Cognos/Datastage as well as SAP



*IBM CIO office increased the number of SAP systems backed up from **2 to 40** and the backup frequency from **once a month to daily for production systems** without adding administrators*

## IMS 12: the next step in simplification and enterprise integration

### Introducing the IMS Catalog

- **IMS operational data becomes *immediately accessible*** for SQL query processing, with no replication required.
- **Distributed tools can access IMS operational data.** The IMS Catalog permits broad integration with IBM tools in areas such as:
  - Database visualization
  - Query tooling support
  - Data insight
  - Analytics
- **Clients can exploit JDBC metadata discovery APIs** to visualize and report on IMS databases, query IMS database contents, generate SQL queries and pureQuery applications, and more.
- **Application Developers will see even more significant productivity gains** in their application development and testing tasks thanks to IMS Catalog's synergy with IMS Explorer.



## Optimize data across your IMS environment

### IMS Tools

New!

- **IMS Connect Extensions for z/OS V2.3** enhances the manageability of TCP/IP access to IMS through IMS Connect
  - **NEW!** Routing and monitoring of DRDA requests
- **IMS Performance Analyzer for z/OS V4.3** provides comprehensive transaction performance and system resource usage reporting for IMS DB and IMS TM systems
  - **NEW!** Management and reporting of IMEGAMON for IMS ATF
- **IMS Problem Investigator for z/OS V2.3** provides an ISPF dialog, batch and REXX interfaces, to format and present IMS-related diagnostic data including the IMS log and monitor
  - **NEW!** Comprehensive support for AFT
- **IMS Performance Solution Pack for z/OS V1.2** delivers a more affordable, comprehensive portfolio of IBM DB performance management tools
  - **NEW!** Java Web Start and remote connections definitions simplify deployment and management

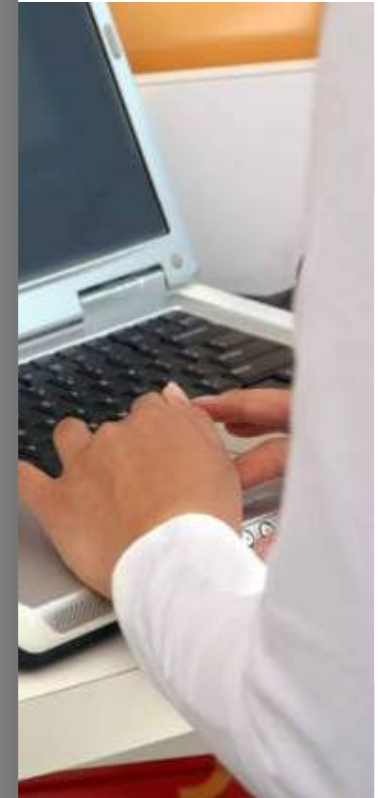


## Accelerate application development

# Rational Development and Test Environment for System z Rational Application Developer v8.5

New!

- **Rational Development and Test Environment for System z** (*replaces the Rational Developer for System z Unit Test feature*) allows System z applications to be developed and tested with actual mainframe operating systems, middleware, and software on x86 PC platforms
  - **NEW!** Flexible licensing including floating user options for sharing a single license between multiple users
  - **NEW!** Support for zEnterprise architecture, WebSphere 8.0, and CICS 4.2
- **Rational Application Developer v8.5** provides visual and source level development capabilities to shorten and optimize the cycle of publishing applications to the server.
  - **NEW!** Optimized support for IBM® WebSphere Application Server 8.5 and the Liberty Profile, IBM Workload Deployer v3.1 and IBM WebSphere Portal



*ITERGO has over **200 developers** developing mainframe applications using Rational Developer tools with significant gain in productivity*

## Modern environment for team development and testing IBM Integrated solution for System z development



- **IBM integrated solution for System z development** builds System z enterprise business products and services
  - **NEW!** Includes team collaboration, unit testing, analysis, change management, and software configuration in one package
  - **NEW!** Unified platform with support for IBM CICS, IMS, COBOL, PL/I, Java, High-Level Assembler, JCL, and REXX including web services, Web 2.0 applications, and Java Enterprise Edition applications



*CACEIS used Rational Team Concert to help reduce inconsistencies between open platform and mainframe components reducing costs*



## Cloud-style CICS applications and infrastructure

### CICS Transaction Server for z/OS V5.1 **Open Beta**



- **Platform as a Service (PaaS)** capabilities that can be used to host Software as a Service (SaaS)-based CICS applications.
- **Policy-based management** to automatically modify the behaviour of tasks that exceed predefined thresholds, during runtime.
- **Fast and lightweight Java web container** combining Java Servlets and JSPs with fast local access to CICS applications.
- **Capability and scalability advancements** that allow CICS applications to do significantly more, with much greater ease.

*Cloud-style CICS  
development, deployment  
and operations built on  
WAS Liberty profile*

Available to download  
at  
[ibm.com/cics/openbeta](http://ibm.com/cics/openbeta)  
from July 13th, 2012

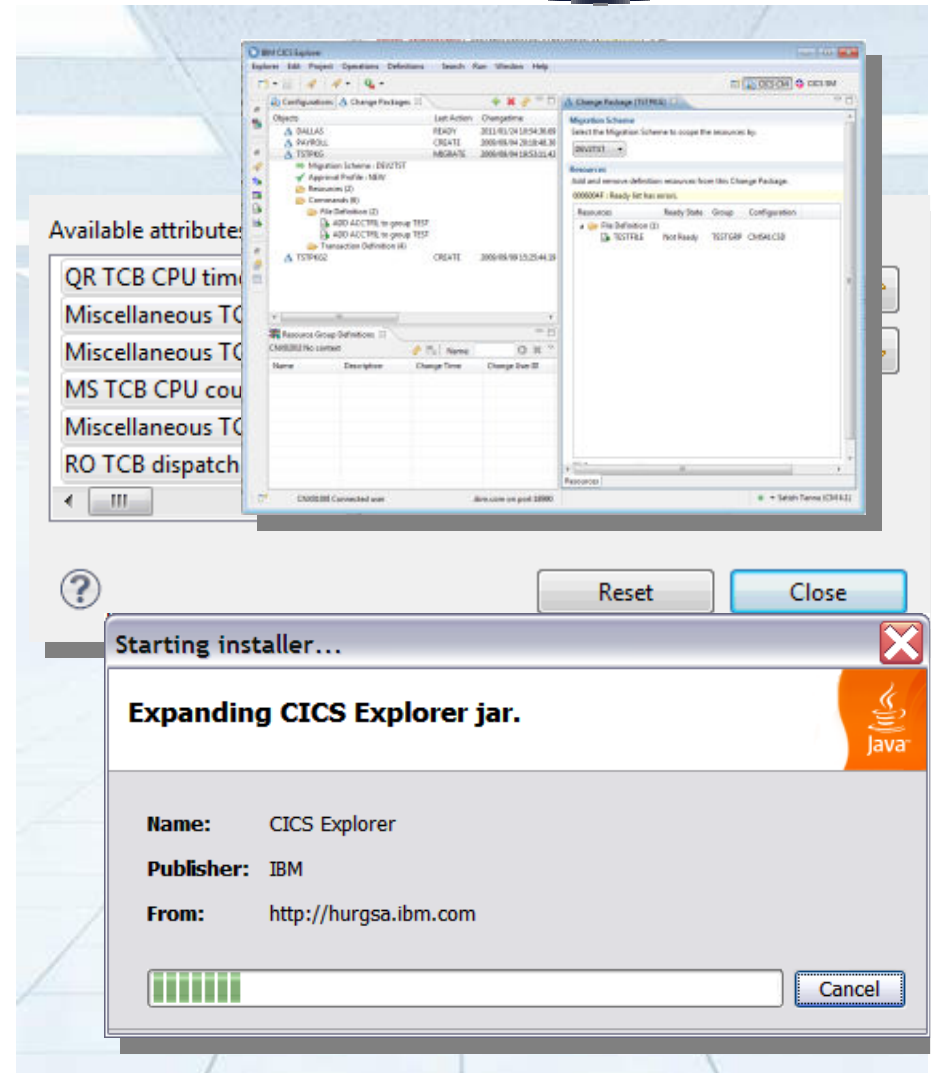
***KPT/CPT implemented CICS in a cloud and now users can perform transactions directly on their ERP system saving time and money.***

# A Better Way to Manager your CICS

## CICS Explorer solutions



- **CICS Explorer V1.1.1** provides a scalable deployment for 1000s of users
  - **NEW!** Java Web Start and remote connections definitions simplify deployment and management
- **CICS Explorer plug-in for CICS Performance Analyzer for z/OS V3.2.1** displays performance issues at a glance
  - **NEW!** CICS Transaction and System Health dashboard view and customizable sheet views
- **CICS Explorer plug-in for CICS Configuration Manager for z/OS V2.1.1** gives developers more control from within their desktop UI
  - **NEW!** Edit and control of Change Packages and submit Deployment Analysis JCL and view report directly for CICS Explorer





# Reduce costs by improving enterprise application analysis

## Performance Determination Tools V12.1

- **IBM Debug Tool for z/OS V12.1** helps increase debugging efficiencies and reduce application development cycle times.
  - **NEW!** EQALANGX support for Enterprise COBOL and enhanced performance for automonitor
- **IBM Fault Analyzer for z/OS V12.1** helps to analyze and correct application failures quickly.
  - **NEW!** Enhanced Java support
- **IBM File Manager for z/OS V12.1** manages production, test, and development data across multiple formats and storage media.
  - **NEW!** GUI plug-in support
- **IBM Application Performance Analyzer for z/OS V12.1** helps maximize the performance of applications and improve the response time of OLTP
  - **NEW!** Enhanced support for WebSphere and Java apps

**Enhanced!**

**Overall CPU Activity:**

Samples	9,998	100.0%
CPU Active	8,346	83.4%
WAIT	1,117	11.1%
Queued	535	5.3%

**CPU Usage Distribution:**

CPU Active	8,346	100.0%
Application	3,560	42.6%
System	3,543	42.4%
DB2 SQL	0	0.0%
Data Mgmt	15	0.1%
Unresolved	1,228	14.7%
IMS DLI Call	0	0.0%

**CPU Modes:**

Active CPU	8,346	100.0%
------------	-------	--------

**Process:**

Ref	Field	Value
2	CUS	
3	CUST-ID	AN 1 5
	X(5)	AN 1 5 02202
4	NAME	X(17) AN 6 17 Major, Art
5	ACCT-BALANCE	S9(7)V99 PD 23 5 1234.56
6	ORDERS-YTD	S9(4) BI 28 2 5
7	ADDR	X(20) AN 30 20 1512 Pine Bluff
8	CITY	X(14) AN 50 14 Harmon
9	STATE	X(02) AN 64 2 MN
12	OCCUPATION	X(30) AN 137 30 College student

\*\*\* End of record \*\*\*

# Streamline SOA Deployment and Governance

IBM WebSphere Application Server v8.5

WebSphere Service Registry and Repository v8.0



- **IBM WebSphere Application Server v8.5** provides a lightweight profile with ease of use and high productivity for developers
  - **NEW!** Liberty profile with extended enterprise applications to mobile devices and Java 7 support
  
- **WebSphere Service Registry and Repository v8.0** ensures awareness of available applications and services with associated metadata and documents through the enterprise
  - **NEW!** Enhanced integration with DataPower to support governed service gateway and enhanced integration with Rational Asset Manager



*Deutsche Rentenversicherung Knappschaft-Bahn-See used WAS to convert 2.7M paper documents to a digital SOA environment*

# Modernize and extend zEnterprise Processes

## IBM BPM Solutions on z/OS

**New!**

- **IBM Business Process Manager Advanced on z/OS v8** simplifies operations by centralizing process assets for high volume process automation and adding a “layer of process” versus rip-and-replace
  - **NEW!** Enhanced design tools to make it easier to use with existing COBOL programs and extended out-of-box adapters
- **IBM Business Monitor for z/OS v8** provides customizable Web 2.0 dashboards enable business users to define and customize KPIs, Alerts, and Reports and viewed on mobile devices ,ipads and web interfaces
  - **NEW!** Includes Cognos reports
- **WebSphere Operational Decision Management for z/OS v8.0** provides comprehensive automation and governance of operational decisions that are made within mainframe applications.
  - **NEW!** Test and simulation of decision logic in COBOL applications to identify the impact of decision changes



*#1 leader in BPM*

## Preview: New Analytics Technology on System z

### Real time scoring of transactional data in DB2 10 for z/OS

- **Delivers better, more profitable decisions at the point of customer impact**
  - Enables more informed customer interaction
    - Improves customer service
    - Increases revenue per customer ratio
    - Heightens customer retention
  - Improves fraud identification and prevention
    - Reduces risk and exposure
- **With improved accuracy, speed and performance while reducing cost and complexity**
  - Improves accuracy by scoring new and relevant data directly within the OLTP application
  - Scales to large data volumes to improve accuracy of data models
  - Delivers the performance needed to meet and exceed SLAs of OLTP applications
  - Minimizes demand on network, HW, SW and resources



*Part of an extensive  
Business Analytics  
solution on System z!*

## Optimizing data performance and management of DB2 for z/OS

### DB2 for z/OS Tools



- **DB2 Recovery Expert for z/OS v3.1** delivers new web-based GUI and redesigned ISPF for common look, feel and function across interfaces.
  - **DB2 OMPE XE for DB2 for z/OS v5.1.1** optimizes enterprise database performance by superior stored procedure capabilities.
  - **DB2 Accessories Suite v2.2** - a suite of products to enhance the use of DB2 for z/OS that now includes IBM Data Studio v3.1.1.
- **InfoSphere Optim Query Workload Tuner for LUW & z/OS v3.1.1** provides expert recommendations to maximize application performance
  - **NEW!** Subsumes Designer Advisor functionality
- **InfoSphere Optim Configuration Manager for DB2 LUW & z/OS v2.1.1** offers centralized management of database and client configuration based on IBM DB2 technology
- **InfoSphere pureQuery Runtime for LUW & z/OS v3.1.1** provides a runtime environment and an API for rapid deployment of database applications
- **InfoSphere Data Architect v8.1** helps discover, model, relate, and standardize diverse and distributed data assets





## Delivering exceptional web experiences for Linux on z WebSphere Portal v8.0 for Linux on z





- **WebSphere Portal v8.0 for Linux on z** provides a rich UI, personalized, secure, highly scalable, multichannel (leveraging mobile smartphone themes available via catalog), broad integration
  - **NEW!** Integrated toolbar for managing portal and web pages
  - **NEW!** Mobile experience theme to extend easily web content to smartphones
  - **NEW!** Web analytics page overlays delivering real-time web page and channel delivery analyses
  - **NEW!** Blog, wiki, and article capabilities through business ready content templates
- Leveraging WebSphere Portal, **IBM Customer Experience Suite** and **IBM Intranet Experience Suite** are integrated solutions that integrate social, mobile, analytics and content creation and management



*The global mobile worker population will represent nearly 35% of the worldwide workforce in 2013\**

## IBM Software for System z

Smart Computing for Smart Businesses

Scalability	Availability	Security	Flexibility
			
<p><i>With the new z114, Indiana Farm Bureau Insurance has up to four different ways to run Java workload on the mainframe while handling a constant stream of around <b>11 transactions a second from 7 am to 7 pm daily and allowing for a 25% growth all in the same purchase price.</b></i></p>	<p><i>Electronuclear, subsidiary of Eletrobras, eliminated manual process and accelerated information flows including ERP systems, backup systems, and recovery operations <b>resulting in reduced payroll processing days and month end closing times.</b></i></p>	<p><i>PSP consolidated its entire IT infrastructure on System z for issuing credit cards and ATM transactions because of its <b>PCI compliance with the highest level security and unmatched scalability.</b></i></p>	<p><i>City and County of Honolulu migrated from a Windows environment to develop a cloud environment to offer software-as-a-service to other departments <b>resulting in management of hardware and services in hours vs. weeks.</b></i></p>



# Thank You!

**Email: [stwalsh@au1.ibm.com](mailto:stwalsh@au1.ibm.com)**



© Copyright IBM Australia Limited 2012. ABN 79 000 024 733. © Copyright IBM Corporation 2012. All Rights Reserved.

TRADEMARKS: IBM, the IBM logos, ibm.com, smarter planet and the planet icon are trademarks of IBM Corporation registered in many jurisdictions worldwide. Other company, product and services marks may be trademarks or services marks of others. A current list of IBM trademarks is available on the Web at "Copyright and trademark information" at [www.ibm.com/legal/copytrade.shtml](http://www.ibm.com/legal/copytrade.shtml).

IMPORTANT PRIVACY INFORMATION: If you or your organisation would prefer not to receive further information on IBM products, please advise us on 132 426 (Australia) or 0800 444 714 (New Zealand). If you would like IBM Australia Limited to refrain from sending you commercial electronic messages you may send an unsubscribe message to [contact@au1.ibm.com](mailto:contact@au1.ibm.com). The sending of this message was authorised by IBM Australia Limited, and IBM Australia Limited can be contacted at [rlm@au1.ibm.com](mailto:rlm@au1.ibm.com) or on 132 426 (Australia) or 0800 801 800 (New Zealand). IBM may store data on international servers used by it. GL\_13679