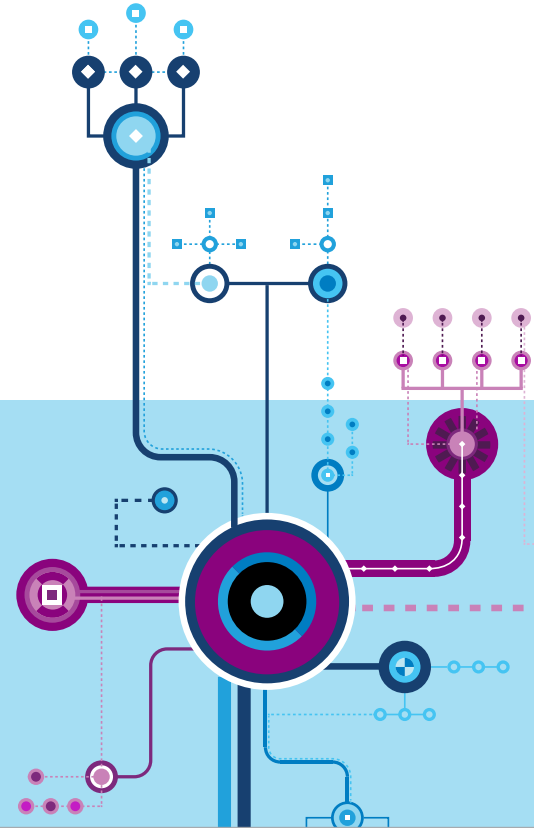


A decorative graphic in the top left corner featuring a blue circle with a white center, connected by lines to several smaller blue circles, some of which are connected by dotted lines.

# IBM Service Virtualisation ROI Assessment

## Do I need service virtualisation?

- Are dependencies on system components or third party applications delaying your projects?
- How much time does your software delivery team spend trying to build their own development and testing environments?
- Are release dates slipping or quality issues arising late in the development cycle and requirements being de-scoped?



# IBM Service Virtualisation ROI Assessment

If you've delivered software in the past 5 years, you have experienced the pains of complex and fragmented IT infrastructures. Most organisations working in these environments spend valuable time, money, and resources waiting on dependent software and service availability.

To combat these issues, organisations are employing service virtualisation. By providing your teams with the ability to simulate the interdependencies of complex applications and systems, for both testing and development, it improves application delivery and reduces risk. Service virtualisation enables earlier and continuous development and testing, even when dependent systems are unavailable, under construction, or being migrated or upgraded.

The IBM® Service Virtualisation ROI Calculator, developed by WinterGreen Research, can illustrate the financial benefit IBM Service Virtualisation will have on your organisation. You can quickly determine the probable return on a service virtualisation investment in a ROI assessment that works with your real information based on your specific scenario.

## Why participate?

New challenges require new approaches. Learn how other clients managed to significantly impact their business, time, and cost with IBM Service Virtualisation.

## Cost

No charge. No obligation. Two hour time investment.

## About IBM

IBM acquired Green Hat in 2012 – a leading provider of software delivery capabilities.

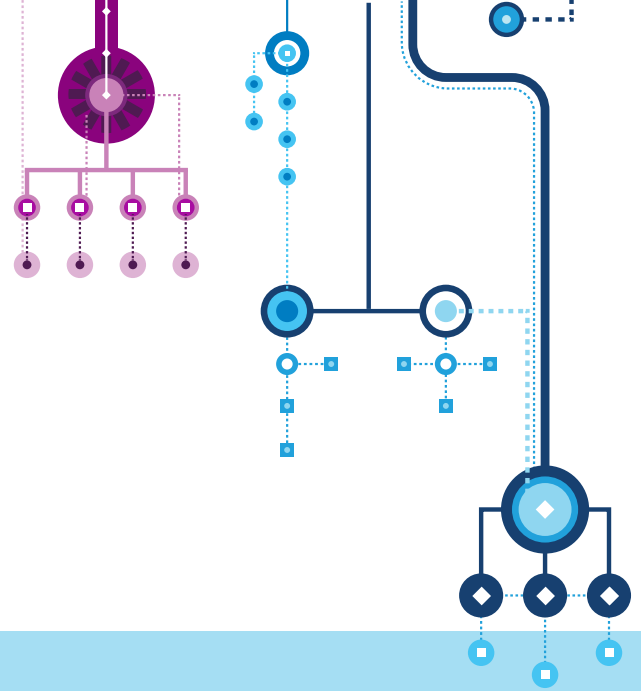
Gartner positioned IBM as a Leader in the Magic Quadrant for Integrated Software Quality Suites in July 2013 – stating that the acquisition of Green Hat has built “a compelling offering around test environment provisioning and continuous test”.

## For more information

Call [Jonathan Duke](mailto:Jonathan.Duke@au1.ibm.com) on **1800 557 343** or email [rlm@au1.ibm.com](mailto:rlm@au1.ibm.com) and quote offer code **101JG98T**.

Alternatively visit the [website](#).





© Copyright IBM Australia Limited 2013. ABN 79 000 024 733 © Copyright IBM Corporation 2013 All Rights Reserved. TRADEMARKS: IBM, the IBM logos and ibm.com are trademarks of IBM Corp registered in many jurisdictions worldwide. Other company, product and services marks may be trademarks or services marks of others. A current list of IBM trademarks is available on the Web at "Copyright and trademark information at" [www.ibm.com/legal/copytrade.shtml](http://www.ibm.com/legal/copytrade.shtml). IMPORTANT PRIVACY INFORMATION: If you or your organisation would prefer not to receive further information on IBM products, please advise us on 132 426 (Australia) or 0800 444 714 (New Zealand). If you would like IBM Australia Limited to refrain from sending you commercial electronic messages you may send an unsubscribe message to [contact@au1.ibm.com](mailto:contact@au1.ibm.com). The sending of this message was authorised by IBM Australia Limited, and IBM Australia Limited can be contacted at [rim@au1.ibm.com](mailto:rim@au1.ibm.com) or on 132 426 (Australia) or 0800 801 800 (New Zealand). IBM may store data on international servers used by it. GL\_15558