




**How to become cloud enabled?
By using IBM SmartCloud Provisioning.**
IBM cloud-based platform



IBM SmartCloud Solutions 


- Rethink IT and reinvent business
- Optimized Software Solutions
- Provisioning
- Extending Capabilities
- Orchestrator upgrade path
- Customer Offerings
- Benefits





IBM SmartCloud Solutions

Rethink IT and reinvent business




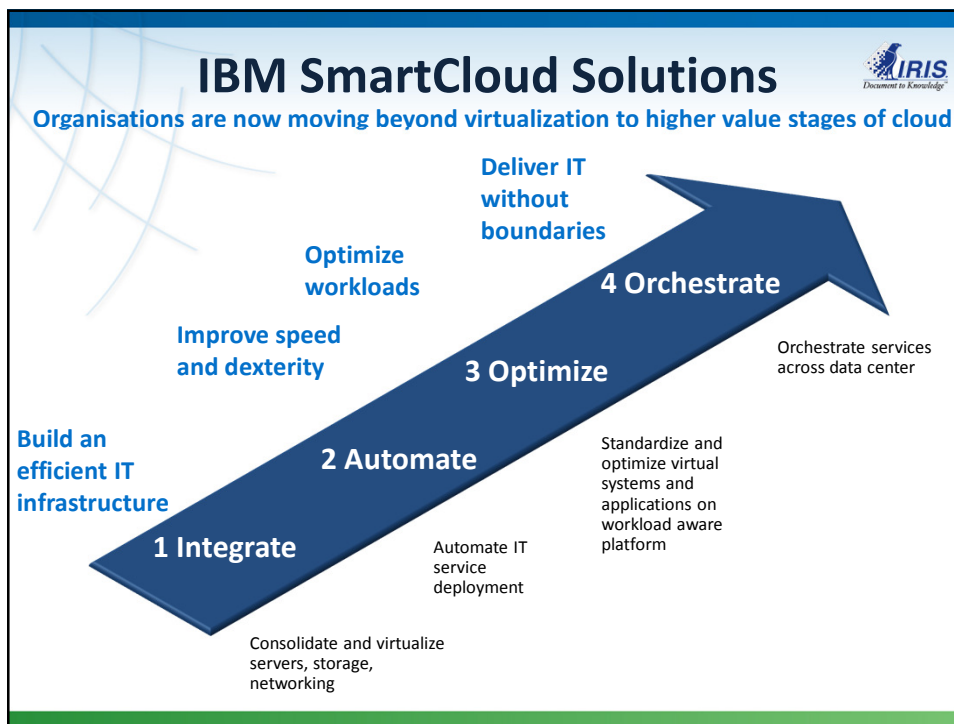
IBM SmartCloud Solutions

The time has come to rethink IT and reinvent business with IBM SmartCloud

Ask the fundamental questions:

- Is your organization achieving the levels of innovation required to compete in today's environment?
- Is your organization able to nimbly put lucrative ideas into action?
- Is your organization continually reinventing customer relationships?
- Are you adapting to market changes as fast as your competitors?







IBM SmartCloud Solutions

IRIS
Document to Knowledge

Introducing SmartCloud

IBM SmartCloud is our family of enterprise-class cloud computing technologies and services for securely building and using private, public and hybrid clouds.

IBM SmartCloud Solutions

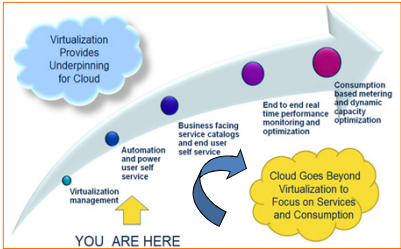
IRIS
Document to Knowledge

Companies need an affordable entry point for cloud

Organizations need a low-cost, low-risk entry point to cloud computing technology with compelling features that achieves their business goals.

Customer goals:

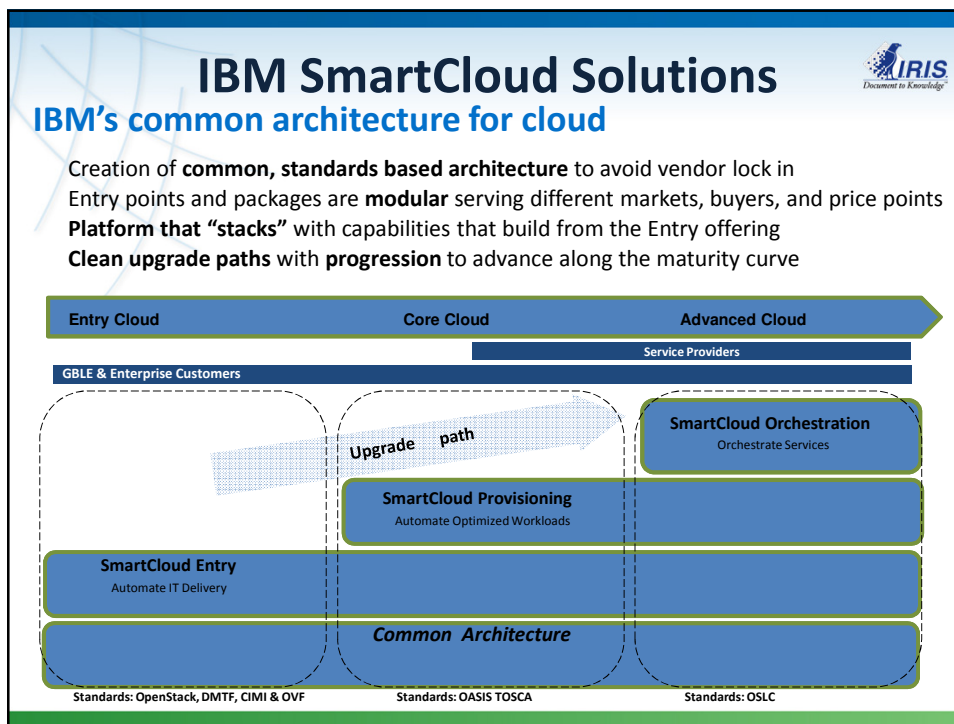
- Provide **agile service delivery** that caters to changing business needs.
- We know virtualization helps reduce capital expense but how do I **control my operational cost?**
- Need to increase the performance, utilization, reliability and scalability of IT resources while **reducing IT complexity**
- Ability to **expand capabilities**

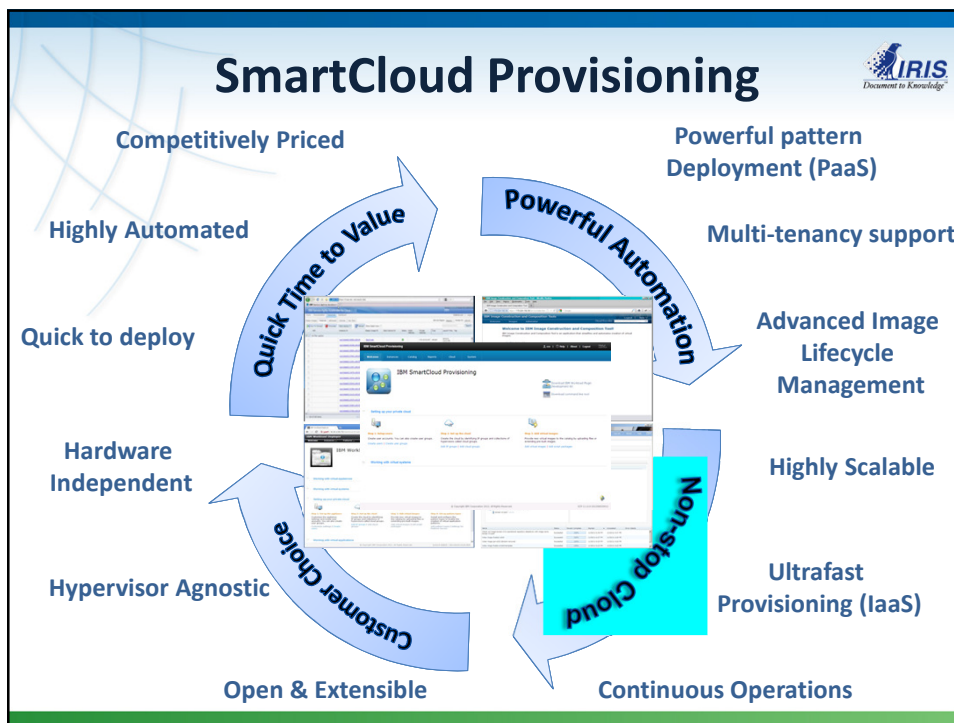
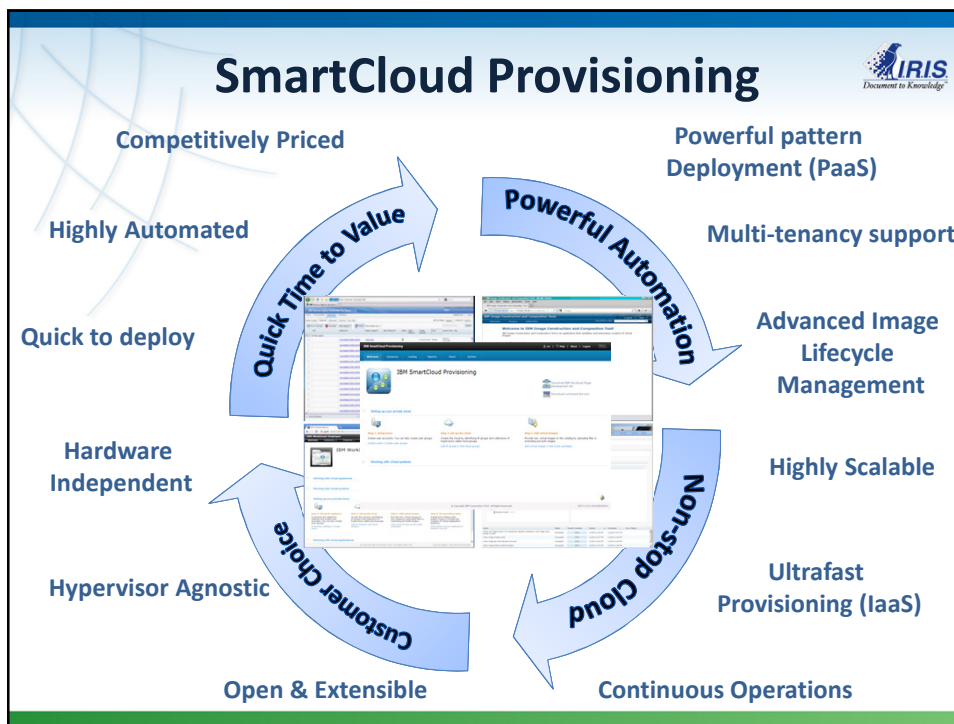


VISIBILITY
See services in real time & better predict business outcomes

CONTROL
Better manage assets, service & compliance.


AUTOMATION
Achieve greater efficiency and service quality





IBM SmartCloud Solutions

Provides unparalleled scalability, speed and fault tolerance



It's Fast


- Can start 100 VMs in under 3 minutes
- Can start a single VM and load OS in under 10 seconds
- Can go from bare metal to ready for work in under 5 minutes

It Scales up to and beyond 50,000 VMs in an hour (50 nodes)

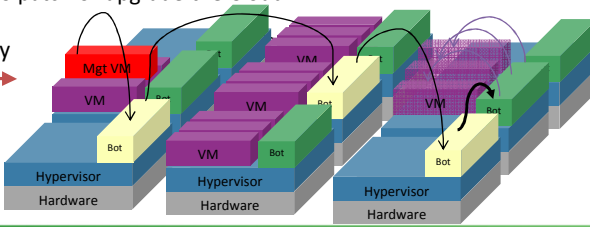
- Add capacity by simply plugging in a blade or server
- Writes only the data you change
- Peer-peer architecture to avoid traditional bottlenecks

It's Fault-Tolerant


- "Live Update" capability to patch or upgrade the Cloud
- No single point of failure
- Automatic failure recovery



Requested VMs will be up and running under a minute using standard HW



SmartCloud Provisioning



Competitively Priced

Highly Automated

Quick to deploy

Hardware Independent

Hypervisor Agnostic

Open & Extensible

Powerful pattern Deployment (PaaS)

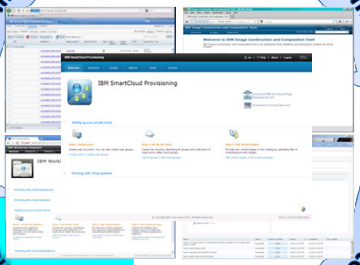
Multi-tenancy support

Advanced Image Lifecycle Management

Highly Scalable

Ultrafast Provisioning (IaaS)

Continuous Operations



Quick Time to Value

Powerful Automation

Customer Choice

Non-stop Cloud

SmartCloud Provisioning

Customer Choice

Hypervisor Agnostic
 YOUR choice of hypervisor
 Managed or direct to hypervisor.
 High scale low touch support for KVM, Xen, ESX, Hyper-V
 Managed hypervisor support for vCenter, VMControl.
 No lock in – easy to move between hypervisors.
 (demo shared image 3 min & demo hypervisor provisioning 4 min)

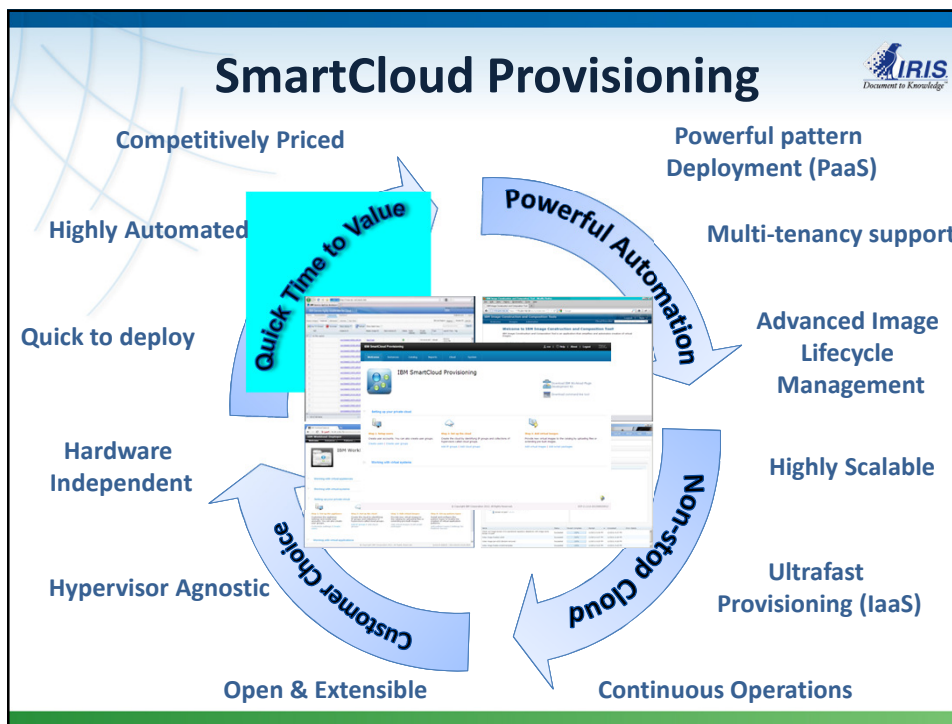
Hardware Independent
 Supports any x86 hardware with VT.
 Manage PowerVM systems through VMControl.
 Works with IBM's new PureFlex systems.
 Simple to integrate with existing storage systems.
 (storage independent)

Open and Extensible
 Open source based (HBase, ZooKeeper), small footprint.
 HSLT component being shared with OpenStack community.
 Easy to integrate with Web Services layer, REST APIs,...

"IBM Joins OpenStack as a Founding Member"
 - April 2012

SmartCloud Provisioning

SCP – Supported Hypervisors



SmartCloud Provisioning

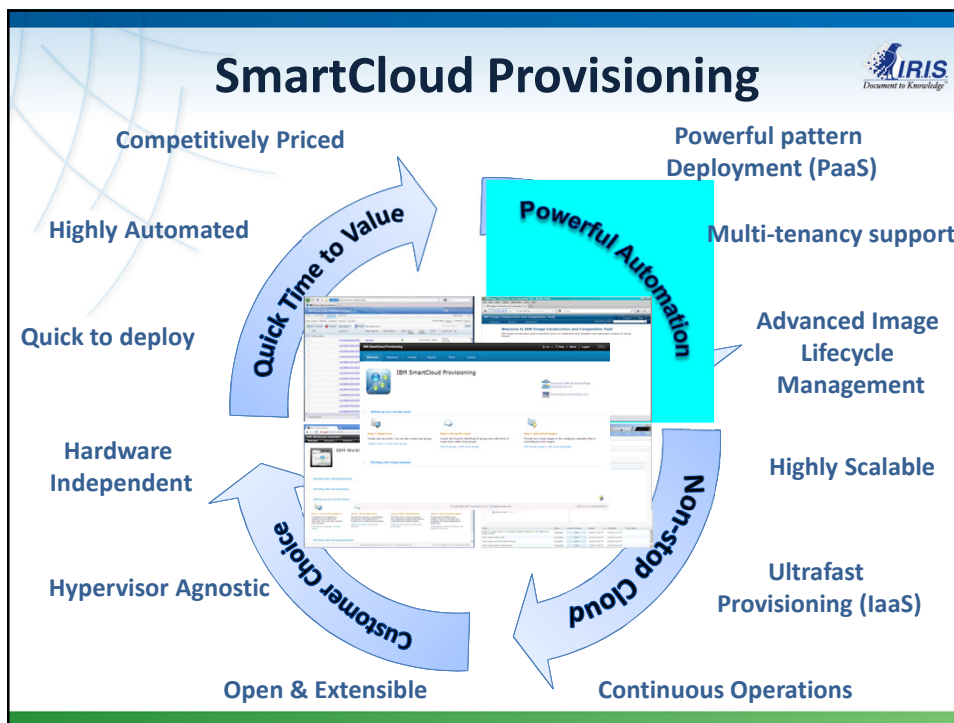
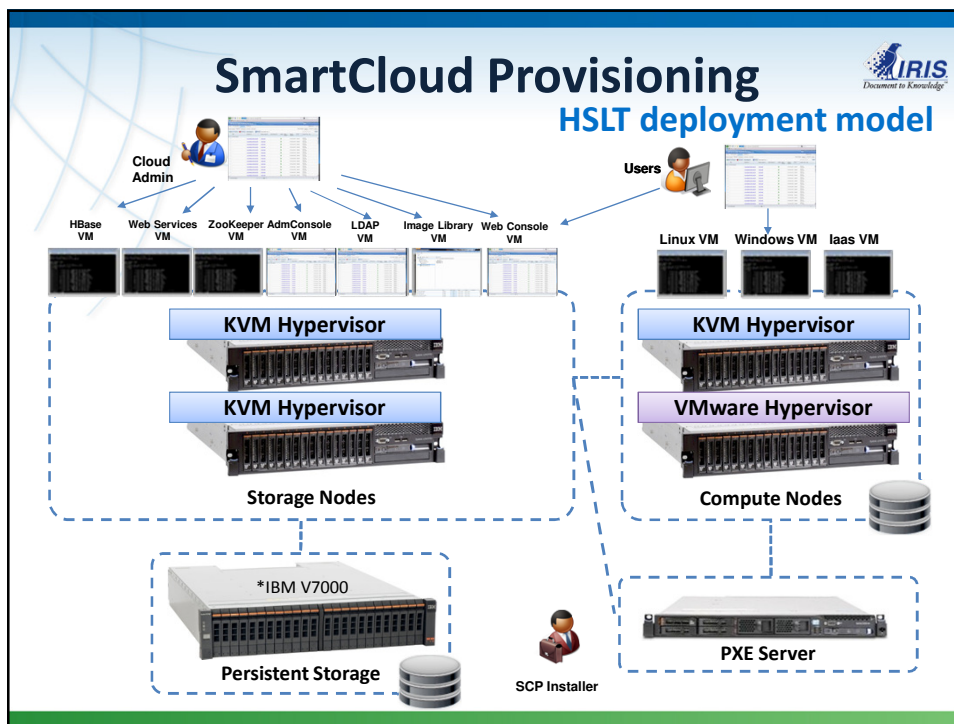
Quick Time to Value

Pricing
 Cost competitive pricing against other Cloud provisioning solutions.
 Special MSP pricing models, ASL licensing, perpetual license or monthly rental.
 Pricing is possible in ASL (datacenter or hosting) mode

Highly Automated – Optimise your staff costs
 Requires less administrators to manage the environment.
 Designed for low-touch operations and administration – reduces manual effort.
 Highly automated, self-healing, and instant recovery of the cloud management.


Easy to Deploy – Time to Value
 Install a PXE Boot Server (first box) and a network switch
 Hook in the network 4 servers (2 storage nodes and 2 compute nodes)
 Management Software installs itself as a cluster over the nodes (2-3 hours)
 Extends automatically (from bare metal to cloud node in less than 6 min)

The IRIS logo is located in the top right corner of the slide.



SmartCloud Provisioning

Powerful Cloud Automation



Powerful Pattern Deployment
 Powerful drag-and-drop UI to design e-business patterns.
 Deployment for complex PaaS environments in just a few clicks.
[\(Pattern Deployment demo 5 min\)](#)

Multi-Tenancy Support
 MSP & CSP ready with network and presentation separation.
 Service catalog for IaaS and PaaS offerings.

Advanced Lifecycle Image Management
 Management capabilities to design, build and manage image sprawl.
 Automated image indexing supporting file/byte comparisons within images.
 Image construction and composition tool (ICCT) to build standardised images.

Easy to Migrate & On-board
 Can manage existing VMware deployments by managing through vCenter. [\(VM take over demo ppt\)](#)

Standalone server
7.0.0.17

WebSphere Application Server Samples

Create DB2 Data Source to standalone DB2 Enterprise server

↑

DB2 Enterprise
9.7.3.1

Create DB2 database



IBM SmartCloud Solutions

SmartCloud Extending Capabilities



SmartCloud Provisioning
 Extending the cloud capabilities beyond SCP

SmartCloud Provisioning

- High Scale Low Touch
- ICCT – Image Construction
- Virtual Image Library
- Workload Deployer

Health Analytics
 Host & VM Monitoring
 Event Response & Mgt
 Capacity Planning
 What-if Scenarios?

Patch Management
 Compliance Reporting
 Policy Enforcement

Centralised Backup
 Policy Driven
 Data Restore
 Image Snapshots

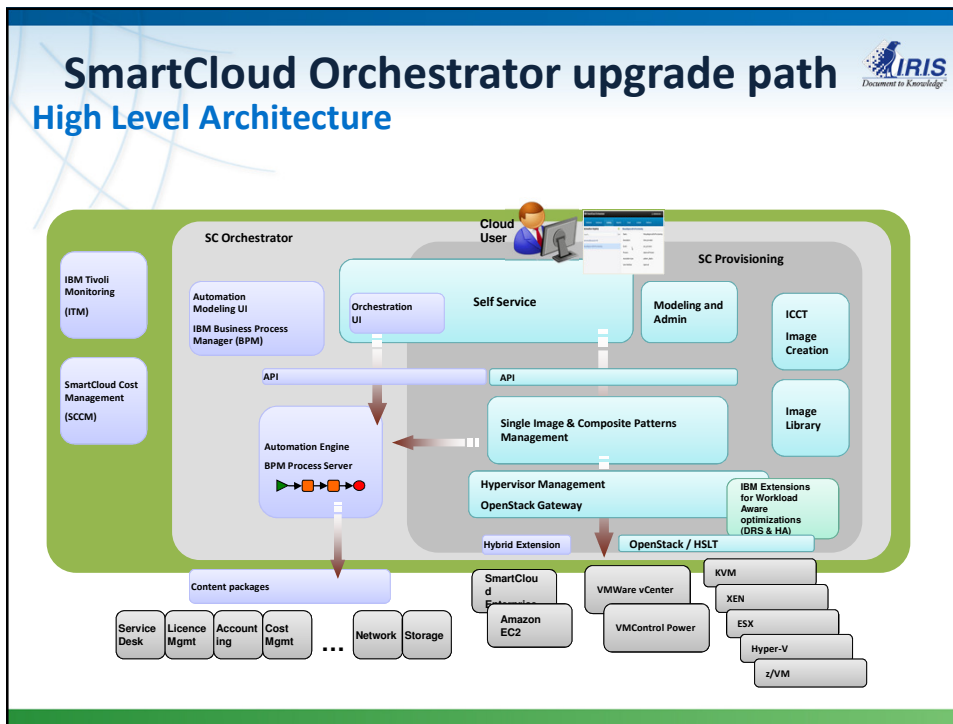
Usage Reporting
 Cognos Reporting
 Accounting & Rating
 Invoice Creation

- SmartCloud Monitoring
- Tivoli Endpoint Manager
- Tivoli Storage Manager fVE
- Tivoli Usage & Accounting Mgr

Availability and Performance
 Security and Compliance
 Security and Compliance
 Usage and Accounting

IBM SmartCloud Solutions
 SmartCloud Orchestrator upgrade path

IBM SmartCloud Solutions
 SmartCloud Orchestrator upgrade path



IBM SmartCloud Solutions

Customer offerings

Create topologies according to customer application needs

The diagram illustrates the architecture of IBM SmartCloud Solutions, organized into several layers:

- Cloud services and workloads:** This top layer is divided into three categories: Software as a Service (SaaS), Platform as a Service (PaaS), and Infrastructure as a Service (IaaS). Each category includes icons representing various services and workloads.
- Cloud management:** This layer focuses on the operational aspects of the cloud, with the text "Provision, monitor, schedule, track and bill." accompanied by a gauge icon.
- Virtualization:** This layer involves the underlying virtualization technologies, described as "Hypervisors, virtual servers and virtual networking," with icons of server racks and a recycling symbol.
- Physical hardware:** The bottom layer represents the physical infrastructure, including "Servers, storage and networking," with icons of server racks.

At the bottom of the diagram, it states: "Strategy, security, design and implementation consulting".

On the right side, a collection of logos represents the supported applications and technologies:

- IBM DB2, Apache Software Foundation, COGNOS, ORACLE, WebSphere software, SAP, Tivoli (Tivoli Storage Manager).
- vmware, KVM, PowerVM, and POWERED BY HYPER-V.
- VM/ESA and z/VM.
- Physical hardware: X86 blades, Power blades, and zEnterprise.

IBM SmartCloud Solutions

Benefits

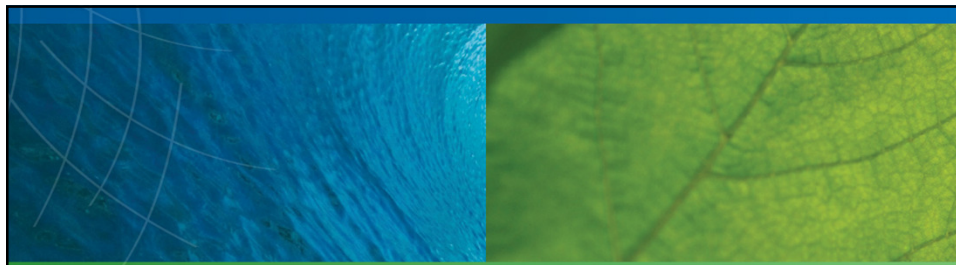
The slide features a large, abstract graphic at the bottom composed of various geometric shapes in shades of blue, red, and white, arranged in a pattern that suggests connectivity and data flow.

IBM SmartCloud Solutions



SmartCloud Provisioning's Benefits

- Addresses the service management needs of a DC
- Provides solid base for cloud enabled DC (see add-on low cost products)
- Is OPEN
- Is CHEAP
- Is EASY & FAST ...to install, ...to operate
- Has a low TIME TO VALUE
- Has a low IT learning curve (14 hrs OL)



Questions?

