



IBM eServerJ iSeriesJ

# iSeries Configurator Update January 2003

[jpobey@us.ibm.com](mailto:jpobey@us.ibm.com)



# What's new in the configurator January 2003?

## *Highlighting V5R2 announcements*

- Hardware
  - ▶ Key Topic: Packages
  - ▶ Key Topic: Memory
  - ▶ Key Topic: HSL
  - ▶ Top 10 Things to Know
- Software
  - ▶ Key Topic: Packages
  - ▶ Top 10 Things to Know
- Services
- Additional Configurator Information
  - ▶ Withdrawn Product Configuration
- Support
- Backup

Note: Most of the updates described in this material are delivered in the January 28, 2003 release of the configurator.



*What's new in the configurator  
January of 2003?  
(New Hardware Support)*

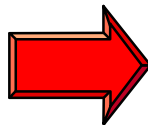
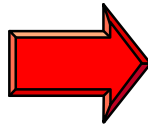


# New Hardware Support

## *New iSeries Models and Processors*

### Initial Order Example

Default is Model 810  
Plus  
800, 825, 870 Models  
and 890 processors  
Only V5R2 available  
(for new models)



iSeries and AS/400 Servers - Processor

Processor Basic Options System Options 9309 Racks

Server Type  
iSeries

Server Model  
Model 810  
Model 250 Entry Package - 0297  
Model 250 Growth Package - 0298  
Model 270  
Model 800  
Model 810  
Model 820  
Model 825  
Model 830  
Model 840  
Model 870  
Model 890

Software Version/Release  
Version 5 Release 2

< Previous Next > Configure Cancel Reset Page

# New Hardware Support

## *New/updated selection windows - Initial Order*

Server Type  
 iSeries  
 iSeries for Domino  
 Note: Initial order only



Server and Processor Feature



Package Feature  
 Note: (New Models  
 and 890 only)



Base POD Activation Feature, #9603, added  
 (Model 870/890 Enterprise Editions)



CUoD (temporary) features will be added here  
 in future release. Planned for March 10.

iSeries and AS/400 Servers - Processor

Processor Basic Options System Options 9309 Racks

Server Type  
 iSeries

Server Model  
 Model 825

Server and Processor Feature  
 0873 and 2473 3/6-Way (3600/6600 CPW)

Package Feature  
 7418 Package Feature

Total Main Storage  
 16384 MB

Software Version/Release  
 Version 5 Release 2

On-Demand Capacity

Description	Proposed
1609 POD Activation Feature	0

< Previous Next > Configure Cancel Reset Page

# New Hardware Support

*New/updated selection windows cont.*

Server Type  
iSeries for Domino



Lists Model 270 and Model 820 Domino systems only



Note: Model 810 and Model 825 iSeries for Domino systems are planned to be added on March 10, 2003

**iSeries and AS/400 Servers - Processor**

Processor | Basic Options | System Options | 9309 Racks

Server Type  
iSeries for Domino

Server Model  
Model 270  
Model 270  
Model 820  
2452 Dom 1-Way (3070 MCU) Ann 4/2001

Interactive Card (on applicable models)

Total Main Storage  
256 MB

Software Version/Release  
Version 5 Release 2

< Previous | Next > | Configure | Cancel | Reset Page

# New Hardware Support

## *New/updated selection windows - Upgrade/MES*

NEWSYS selection changed to checkbox

Server Type (initial order only) now 'Upgrade Type'  
 Note: Upgrade system and software is now only selection for 'Upgrade Type'





# New Hardware Support

## *New/updated selection windows - NEWSYS*

1- Select NEWSYS  
 (Window Changes)

2- Window selections change automatically to look like initial order selections

3- Change Model, Processor, or Package.

Note: 'Server Feature' only applies to an initial order (new system)

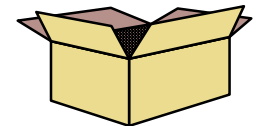


# New Hardware Support

## *Key Topic: Packages*



- All new Models are package systems
- All new Model 890 processors are package systems
  - ▶ #2497 16/24 - Way
  - ▶ #2498 24/32 - Way
- What is a package (edition) system?
  - ▶ Configurator includes certain hardware and software
  - ▶ Not quite the same as previous 'packages' in the configurator
- What are the **key feature codes to know** about?
  1. New **Server Feature Codes** #07xx (Domino)\* and #08xx (non-Domino)
  2. New **Package Feature Codes** #74xx
    - Configurator uses both to determine what hardware is included
  3. New **#9xxx features** (ZERO-Priced hardware)
    - #9726 512MB IXS Memory
    - #9792 1.6 GHz IXS
    - #9603 POD Activation



Note: \* Domino is not covered in these materials

# New Hardware Support

## Key Topic: Packages cont.



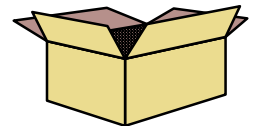
- There are Packages and there are Editions
  - Model 810, 825, 870, 890

Model	Standard Edition	Enterprise Edition	Model 800 Package	Domino*
800			✓	
810	✓	✓		✓
825	✓	✓		✓
870	✓	✓		
890	✓	✓		

\* Domino processors only

- What Model 800 Editions are there?

Model	Value	Standard	Advanced
800	✓	✓	✓

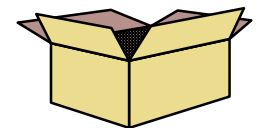
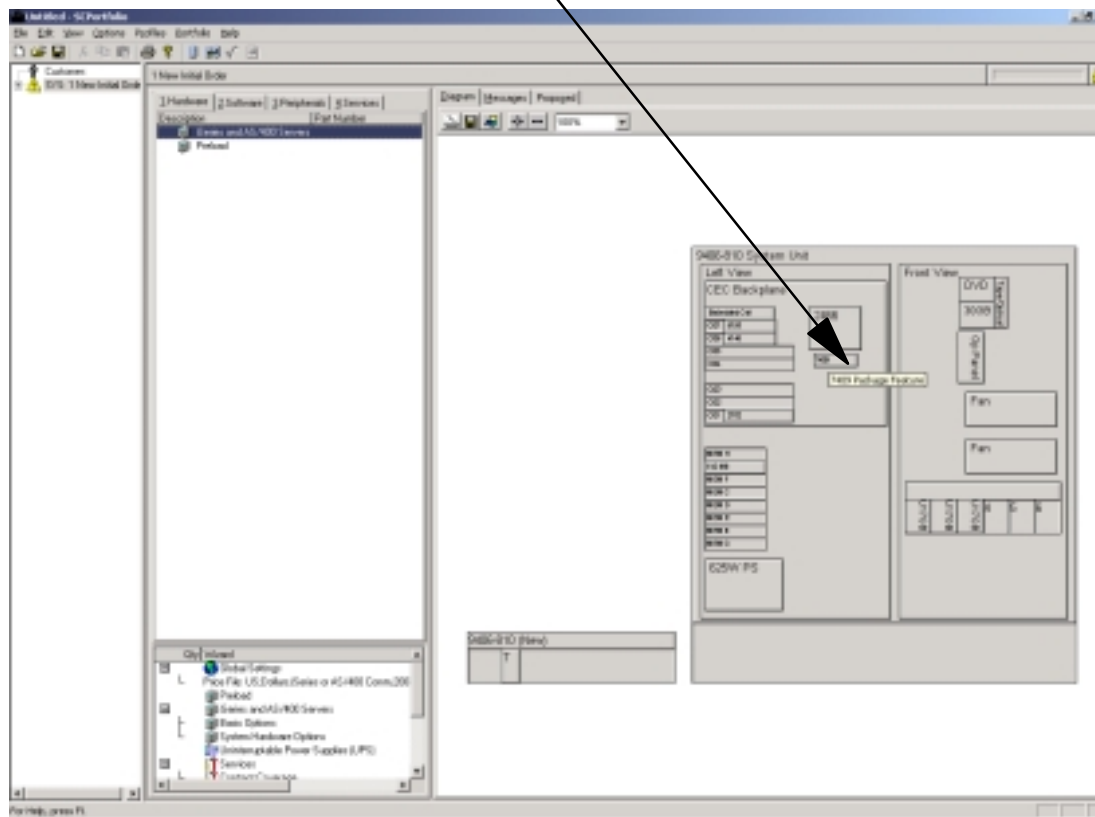


Note: \* Domino is not covered in these materials

# New Hardware Support

## Key Topic: Packages cont.

- Package Feature Code will be drawn in the System Diagram
  - 7409 Package Feature



# New Hardware Support

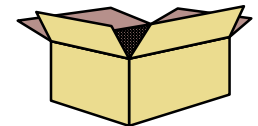
## Key Topic: Packages cont.



- Models that include 'package' hardware
  - ▶ Model 825, 870, 890
  - ▶ Model 800\*
- 'Package' hardware can be de-selected
- Defaulted on configuration
  - ▶ Initial orders
  - ▶ Model Upgrades of 'Old' hardware into --> 'New' hardware (Model 825/870/890)
- What hardware is included in which editions?

Answer:

Model	Enterprise Edition	Model 800 Package
800	N/A	Depends on Edition*
870, 890	(1) #9603 POD	
825, 870, 890	(2) #9726 512MB IXS Memory (1) #9792 1.6 GHz IXS	



Note: \* Base hardware means #9746 Twinax and #9749 Ethernet

# New Hardware Support

*Key Topic: Packages cont.*



- **Model 800 Editions**
  - ▶ Where do I select them?



ISeries and AS/400 Servers - Processor

Processor Basic Options System Options 9309 Racks

Server Type  
iSeries

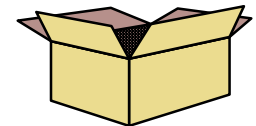
Server Model  
Model 800

Server and Processor Feature  
0865 and 2464 1-Way (950 CPW) Advance Edition  
0863 and 2463 1-Way (300 CPW) Value Edition  
0864 and 2463 1-Way (300 CPW) Standard Edition  
0865 and 2464 1-Way (950 CPW) Advance Edition

Total Main Storage  
512 MB

Software Version/Release  
Version 5 Release 2

< Previous Next > Configure Cancel Reset Page



# New Hardware Support

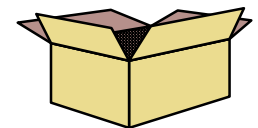
*Key Topic: Packages cont.*



- **Model 800 - Value Edition**
  - ▶ Server Feature #0863
  - ▶ Processor Feature #2463 (300 CPW)
  - ▶ Package Feature #7400
- Software
  - ▶ Licensing for OS/400 (one processor license for each processor)

Included Hardware (defaulted in e-config)	Minimum Configuration Requirements
Tape / Disk controller (#5705, non-RAID)	1 Disk / Tape controller
1 Disk Drive (#4318, 18GB)	1 Arm
256MB Memory (#3092)	256MB Memory
1 DVD-ROM (#4531)	1 DVD device
1 Ethernet LAN adapter (#9749)*	no minimum requirement
1 Communications adapter (#9771)	1 Communications adapter

Note: \* Can de-select if desired





# New Hardware Support

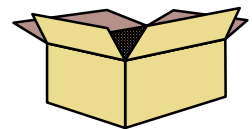
## Key Topic: Packages cont.



- **Model 800 - Standard Edition**
  - ▶ Server Feature #0864
  - ▶ Processor Feature #2463 (300 CPW)
  - ▶ Package Feature #7400
- **Software**
  - ▶ Licensing for OS/400 (one processor license)
  - ▶ Licensing for WebSphere Application Server - Express V5 for iSeries (one processor license for 5722-IWE)

Included Hardware (defaulted in e-config)	Minimum Configuration Requirements
Tape / Disk controller (#5705, non-RAID)	1 Disk / Tape controller
2 Disk Drives (#4318, 18GB)	2 Arm
512MB Memory (#3093)	512MB Memory
1 DVD-ROM (#4531)	1 DVD device
1 Ethernet LAN adapter (#9749)*	no minimum requirement
1 Communications adapter (#9771)	1 Communications adapter
1 Twinax adapter (#9746)*	no minimum requirement
1 30GB QIC Tape drive (#4584)	<b>1 tape drive - 30GB or larger</b>

Note: \* Can de-select if desired



# New Hardware Support

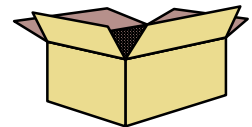
## Key Topic: Packages cont.



- **Model 800 - Advanced Edition**
  - ▶ Server Feature #0865
  - ▶ Processor Feature #2464 (950 CPW)
  - ▶ Package Feature #7408
- **Software**
  - ▶ Licensing for OS/400 (one processor license)
  - ▶ Licensing for WebSphere Application Server - Express V5 for iSeries (one processor license for 5722-IWE)

Included Hardware (defaulted in e-config)	Minimum Configuration Requirements
Tape / Disk controller (#5705, non-RAID)	1 Disk / Tape controller
2 Disk Drives (#4318, 18GB)	2 Arm
512MB Memory (#3093)	512MB Memory
1 DVD-ROM (#4531)	1 DVD device
1 Ethernet LAN adapter (#9749)*	no minimum requirement
1 Communications adapter (#9771)	1 Communications adapter
1 Twinax adapter (#9746)*	no minimum requirement
1 30GB QIC Tape drive (#4584)	<b>1 tape drive - 30GB or larger</b>

Note: \* Can de-select if desired





# New Hardware Support

Key Topic: Packages cont.

- New Configuration Report Format (sample)

Server Feature,  
Processor Feature,  
and Package Feature  
Sorted 1st

Followed by normal  
ascending by feature  
code

Initial Hardware		Qty	Extended Purchase	Extended Maint	Term
Product	Description				
9406-825	iSeries 400 Server	1			
0873	0873 and 2473 3/6-Way(3600/6600 CPW)	1	PRICE		
2473	POD 3/6-Way (3600/6600 CPW)	1	N/C		
7418	Package Feature	1	PRICE		
0041	DEVICE PARITY PROTECTION-ALL	1	N/C		
0325	IPCS EXTENSION CABLES FOR NT	1	110.00		
0829	#4318 LOAD SOURCE SPECIFY	1	N/C		
1025	MODEM CABLE - US/CANADA	1	N/C		
1410	200V 6-FT LINE CORD	1	N/C		
1454	200V 12A 14-FT TL LINE CORD	1	N/C		
1464	6M SPCN CABLE	1	N/C		
1483	10M HSL-2 CABLE	2	1,700.00		
1609	825 POD Activation	3			
1700	IPCS KEYBOARD/MOUSE FOR NT	1	90.00		
2757	PCI-X Ultra RAID Disk Ctlr	1			
2782	PCI-X RAID Disk Unit Ctlr	1			
2844	PCI IOP	1			
2924	ENGLISH	1	N/C		
3042	256MB Main Storage	4			
3046	2048MB Main Storage	12			
4318	17.54GB 10K RPM DISK UNIT	16	22,400.00		
4631	DVD-ROM	1			
4684	30GB 1/4-INCH CARTRIDGE TAPE	1	4,000.00		
4746	PCI TWINAXIAL WORKSTN IOA	1	750.00		
5000	SW PRELOAD REQUIRED	1	N/C		
5029	SOFTWARE VERSION V5R2	1	N/C		
5094	PCI-X Expansion Tower	1			
5540	ATTACH TWNAXAL WKSTA CTRL	1	N/C		
9726	Base 512MB Server Memory	2			
9785	Base HSL-2 2-Port Copper	1	N/C		
9787	Std Base HSL-2 2-Ports Copper	1	N/C		
9792	Base PCI Integ Netfinity Server	1			
9793	BASE PCI 2-LINE WAN W/MODEM	1	N/C		
9844	Base PCI IOP	2	N/C		
9887	BASE HSL-2 BUS ADAPTER	1	N/C		
Serial: N/A		Total			

US Dollars--iSeries or AS/400 Comm price file, dated 01/06/03 01:01:12

# New Hardware Support

*Key Topic: Memory: Model 890*



- Memory rules un-changed for Model 890
  - Refer to May 2002 Configurator Update for detail information
- Remember the '5 Rules'..
  - **Rule #1:**
    - Inside and Outside Memory features
  - **Rule #2:**
    - Memory Features are configured in pairs of same technology
  - **Rule #3:**
    - All memory slots provided must be filled
  - **Rule #4:**
    - All memory features must be of the same or adjacent capacities
  - **Rule #5:**
    - The maximum number of different capacities is 2

# New Hardware Support

## *Key Topic: Memory: Model 870*



- Rules same as Model 890
- Memory Features #2486 Processor
  - Subset of feature codes used on Model 890 ('Inside' cards)
  - #3020 - 4096MB
  - #3015 - 8192MB
  - #3035 - 16384MB
  - #3017 - 32768MB

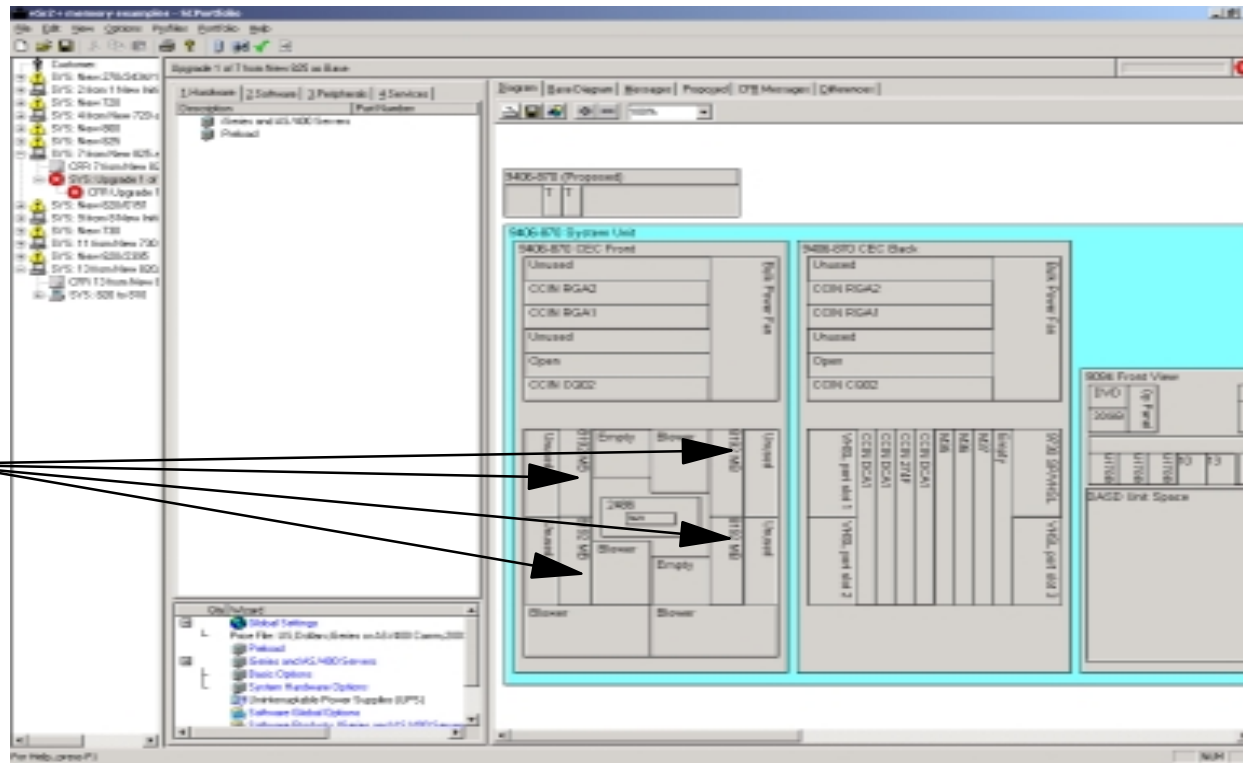
# New Hardware Support

Key Topic: Memory: Model 870 cont.



- Sample System Diagram Model 870 with 32768MB
- 'Inside' features only

1- Pairs  
2- 'Inside' slots





# New Hardware Support

## *Key Topic: Memory: Model 825*



- Memory Features (DIMMs) #2473 Processor
  - ▶ #3042 - 256MB
  - ▶ #3043 - 512MB
  - ▶ #3044 - 1024MB
  - ▶ #3046 - 2048MB
- Available memory increments
  - ▶ See announcement letter
- Memory Rules
  - ▶ **Rule #1**
    - **DIMMs** must be configured in Quads
  - ▶ **Rule #2**
    - Each Quad must be of same capacity and technology
  - ▶ **Rule #3**
    - Minimum of 3 Quads are required (12 DIMMs)
      - Exception is 2GB (8 DIMMs)
  - ▶ **Rule #4**
    - There are 8 total DIMM slots/processor (3/6-Way has 3 processors)
  - ▶ **Rule #5**
    - No processor can contain more than twice the memory of any other processor

# New Hardware Support

## *Key Topic: Memory: Model 825 cont.*



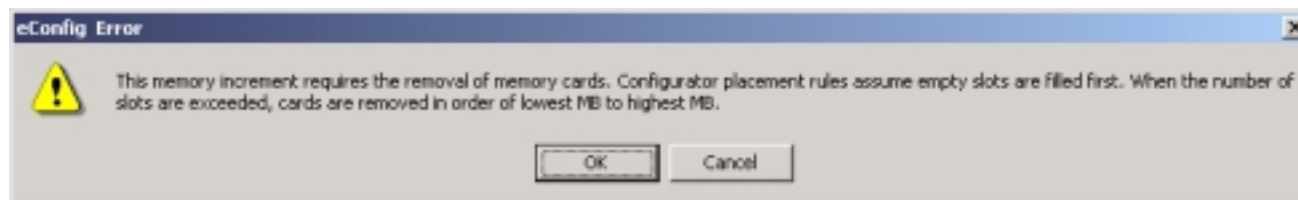
- Configurator defaults to 3GB
  - ▶ Can select 2GB
  - ▶ Warning message sent if 2GB is selected (similar to Model 890 message)
- Configurator attempts to use MINIMUM number of DIMMs
  - ▶ There are multiple combinations of DIMMs valid for most increments
  - ▶ eg. 5GB
    - (8) #3043 512MB and (4) #3042 256MB or **(e-config default)**
    - (4) #3043 512MB and (12) #3042 256MB or
    - (20) #3042 256MB
- Configurator uses DIMM slots in this order (not shown on system diagram)
  - ▶ Processor #1, 1st Quad
  - ▶ Processor #2, 1st Quad
  - ▶ Processor #3, 1st Quad
  - ▶ Processor #1, 2nd Quad
  - ▶ Processor #2, 2nd Quad
  - ▶ Processor #3, 2nd Quad

# New Hardware Support

## *Key Topic: Memory: Model 825 cont.*



- Upgrades
  - ▶ May have to use 'select your own memory' function to reuse existing DIMMs
  - ▶ Let's take an example..
    - Installed system: Model 825 5GB
      - (8) #3043 512MB and (4) #3042 256MB
    - Proposed system: Model 825 6GB
      - (12) #3043 512MB
      - Order transactions:
        - ◆ (4) #3042 convert to (4) #3043 512MB
  - ▶ Possible message displayed



# New Hardware Support

## Key Topic: Memory: Model 825 cont.



- Upgrades cont.
  - ▶ Let's take a 2nd example..
    - Installed system: Model 825 with 25600MB
      - (12) #3046 2048MB and (4) #3042 256MB
    - Proposed system: Model 870 32768MB
      - (4) #3015 8192MB
      - Order transactions:
        - ◆ (1) #3042 256MB convert to (1) #3015 8192MB
        - ◆ (3) #3046 2048MB convert to (3) #3015 8192MB
  - ▶ Sample Configuration Report

Hardware Upgrades

9406-825	iSeries 400 Server	-1
9406-870	iSeries 400 Server	1

Feature conversions

2473	POD 3/6-Way (3600/6600 CPW)	-1
2486	POD 8/16-Way (11500/20000 CPW)	1

Net charge

USD 0.00

3042	256MB Main Storage
3015	8GB MAIN STORAGE

Net charge

USD 0.00

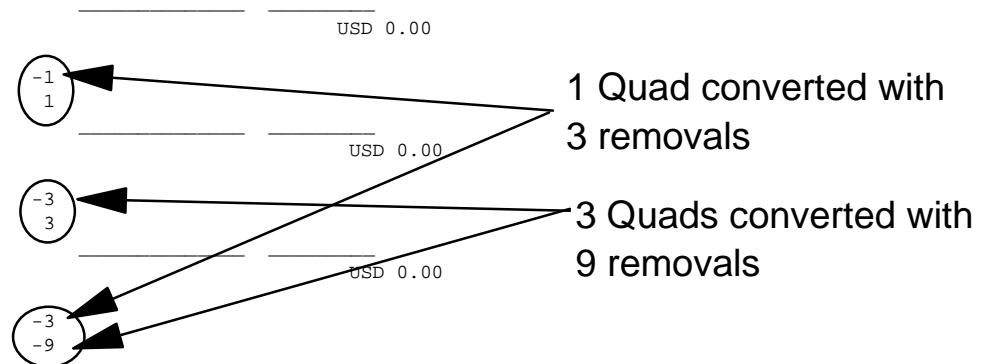
3046	2048MB Main Storage
3015	8GB MAIN STORAGE

Net charge

USD 0.00

Removals

3042	256MB Main Storage
3046	2048MB Main Storage



# New Hardware Support

## *Key Topic: Memory: Model 810*



- Memory Features (DIMMs) #2466 and #2467 Processors
  - ▶ #3092 - 256MB
  - ▶ #3093 - 512MB
  - ▶ #3094 - 1024MB
  - ▶ #3096 - 2048MB
- Available memory increments
  - ▶ 256MB, 512MB, 1024MB, 1536MB, 2048MB, 2560MB, 3072MB, 3584MB, 4096MB, 4608MB, 5120MB, 5632MB, 6144MB, 6656MB, 7168MB, 7680MB, 8192MB
- Memory Rules
  - ▶ **Rule #1**
    - A single **DIMM** is allowed (except 256MB)
  - ▶ **Rule #2**
    - When quantity of DIMMs is > 1, memory must be in PAIRS
  - ▶ **Rule #3**
    - DIMM pairs must be of same capacity
  - ▶ **Rule #4**
    - There are 8 total DIMM slots available

# New Hardware Support

## *Key Topic: Memory: Model 810 cont.*



- Memory Features (DIMMs) #2469 Processor (similar to Model 270)
  - ▶ #3022 - 128MB (Supported and Orderable to complete Pair or Quad)
  - ▶ #3024 - 256MB
  - ▶ #3025 - 512MB (Supported Only)
  - ▶ #3026 - 512MB
  - ▶ #3027 - 1024MB
  - ▶ #3029 - 128MB
- Available memory increments
  - ▶ 512MB, 1024MB, 1536MB, 2048MB, 2560MB, 3072MB, 3584MB, 4096MB, 4608MB, 5120MB, 5632MB, 6144MB, 6656MB, 7168MB, 7680MB, 8192MB, 8704MB, 9216MB, 9728MB, 10240MB, 10752MB, 11264MB, 12288MB, 12880MB, 13312MB, 14312MB, 16384MB
- Memory Rules
  - ▶ **Rule #1**
    - A single **PAIR** is allowed (except 128MB)
  - ▶ **Rule #2**
    - When quantity of DIMMs is > 2, memory must be in Quads
  - ▶ **Rule #3**
    - DIMM Pairs/Quads must be of same capacity
  - ▶ **Rule #4**
    - There are 16 total DIMM slots available



# New Hardware Support

## *Key Topic: Memory: Model 800*



- Memory Features (DIMMs)
  - ▶ #3092 - 256MB
  - ▶ #3093 - 512MB
  - ▶ #3094 - 1024MB
  - ▶ #3096 - 2048MB
- Available memory increments
  - ▶ 256MB, 512MB, 1024MB, 1536MB, 2048MB, 2560MB, 3072MB, 3584MB, 4096MB, 4608MB, 5120MB, 5632MB, 6144MB, 6656MB, 7168MB, 7680MB, 8192MB
- Memory Rules
  - ▶ **Rule #1**
    - A single DIMM is allowed
  - ▶ **Rule #2**
    - When quantity of DIMMs is > 1, memory must be in PAIRS
  - ▶ **Rule #3**
    - DIMM pairs must be of same capacity
  - ▶ **Rule #4**
    - There are 8 total DIMM slots available

# New Hardware Support

## Key Topic: Memory: Conversions



- **Model 890 and 870** (same rules)
  - ▶ Conversion ratio **1 to 1** (within same model)
  - ▶ **Model 890** (see May Configurator Update package)
  - ▶ **Model 870**
    - From Model 730: Conversion ratio **8 to 1**
    - From Model 740: Conversion ratio **4 to 1**
    - From Model 820: No Conversion. All memory replaced via add/remove
    - From Model 825: Conversion ratio **4 to 1**
    - From Model 830: Conversion ratio **8 to 1**
    - From Model 840: Conversion ratio **4 to 1**
- **Model 825**
  - ▶ From Model 825: Conversion ratio **1 to 1**
    - Upward in capacity only
  - ▶ From Model 720: No Conversion. All memory replaced via add/remove
  - ▶ From Model 730: No Conversion. All memory replaced via add/remove
  - ▶ From Model 740: No Conversion. All memory replaced via add/remove
  - ▶ From Model 820: No Conversion. All memory replaced via add/remove
  - ▶ From Model 830: No Conversion. All memory replaced via add/remove
- **Model 810**
  - ▶ From Model 270: No Conversion, all DIMMs migrate (#2434/#1520 2-Way to #2469/#7430 2-Way only)
  - ▶ From Model 720: No Conversion. All memory replaced via add/remove
  - ▶ From Model 730: No Conversion. All memory replaced via add/remove
  - ▶ From Model 810: Conversion ratio **1 to 1**
  - ▶ From Model 820: No Conversion. All memory replaced via add/remove
- **Model 800** (No upgrades into or out of Model 800)

# New Hardware Support

## *Key Topic: HSL*



- Terminology
  - HSL '1': Model 270, 820, 830, 840, 800, 810
  - HSL '2': Model 825, 870, 890
- HSL Basics
  - HSL '2' expansions (#9094, #8093, #8094, #5094, #5095, #5294)
    - Require V5R2
    - New HSL '2' adapter card
      - Has (2) HSL '2' copper connectors
    - New optical adapter card
      - Optical connectors same as used on Model 820, 830, 840
  - HSL '1' expansions (Ex. #5074)
    - HSL '1' connectors
    - #5074 Can migrate to new Models (SC\*)
      - Note: \*Supported for conversion
      - Not configureable new on new Models

# New Hardware Support

## Key Topic: HSL cont.



- HSL Basics cont.
  - Cables
    - HSL '1' cable (copper)
      - HSL '1' connectors on BOTH ends
    - HSL '2' cable (copper)
      - HSL '2' connectors on BOTH ends
    - HSL Conversion cables (copper)
      - HSL '1' connector on 1 end and HSL '2' connector on 1 end
      - Adapts in either direction by reversing
      - Required for:
        - Attaching HSL '1' expansions AND external IXSs to HSL '2' towers and expansions
    - Optical HSL cables
    - #1462 (15M HSL '1') and #1475 (10M HSL Conversion) restrictions
      - Model 800, 810, 270
        - Require minimum of (2) cables other than #1462 and #1475

# New Hardware Support

## Key Topic: HSL cont.



- HSL Basics cont.
  - Specific new Model and Tower support
    - Model 825
      - #2785 2-Port Copper HSL '2' adapter (C08, C09)
      - #9785 2-Port Base Copper HSL '2' adapter (C08, C09)
      - #2786 2-Port Optical HSL adapter (C08, C09)
      - #9786 2-Port Base Optical HSL adapter (C08, C09)
      - #9787 2-Port Base Copper HSL '2' adapter (C08, C09)
        - Configurator distinguishes from #9785 by calling it 'Standard'
        - Always get 1 plus+ 1 #9785 or #9786
      - Adapters support 1 LOOP
    - Model 800/810
      - HSL support 'built-in' (no feature code)
      - Similar to Model 270 and 820
    - Model 870/890
      - No new features
      - Same features previously announced for the Model 890
      - **ALL** #2776 support only 4-ports (not 8) on Model 870 (8/16 Way processor restriction)
        - Similar to Model 890 when #2776 is in HSL slot #3 on 16/24 - Way
    - Tower (#5094, #5095/0595, #5294, #8094 (top unit), #5088/0588)
      - #2886 Optical Bus Adapter
      - #2887 HSL '2' Bus Adapter
  - Configurator supports **Maximum of (4) Towers/Loop**
    - Exception: **ONLY** To achieve maximum towers (6) are allowed

# New Hardware Support

## Key Topic: HSL cont.



- **Let's contrast existing HSL support with Model 890 HSL support..**
- **Model 270, 820, 830, 840**
  - Configurator auto-configures Copper bus adapters required (#9691)
  - Configurator auto-configures minimum Copper HSL cables required
  - Configurator auto-configures SPCN cables required
  - Configurator does NOT auto-configure Optical HSL
    - HSL Cables, Optical bus adapters (#9739/#2739), or Optical/Copper Ports features (#9759/#2759)
    - User must explicitly select
  - Message added to message tab describing:
    - Minimum cables required and what was auto-configured
- **Model 890, 870, 825, 810, 800**
  - June 2002 - January 27, 2003 (Model 890)
    - Configurator did not auto-configure HSL hardware for you
  - January 28, 2003
    - **Configurator WILL auto-configure HSL hardware for you!!**
    - See Tips document for information on how configurator chooses hardware
    - You must verify correct HSL hardware is configured/ordered to meet specific customer requirements



# New Hardware Support

## *Key Topic: HSL cont.*



- HSL Basics cont.
  - **Model 890, 870, 825, 810, 800** cont.
  - What is auto-configured?
    - Configurator auto-configures Copper bus adapters required
    - Configurator auto-configures Copper HSL cables required
    - Configurator auto-configures SPCN cables required
    - Configurator does NOT auto-configure Optical HSL
      - **ALL** selections **MUST BE MADE BY YOU**
    - Now similar to Model 270, 820, 830, 840 support
    - You need to verify HSL hardware meets customer requirements!
  - How do I know what cables I need?
    - (1) Message found in 'Messages' folder tab (when required)
    - **Message 1:** 'Please review your HSL and SPCN cables.' (YELLOW Warning)
      - Minimum Quantity required
      - Maximum Quantity
      - Selected Quantity
      - Auto-configured Quantity
      - Tells you number of SPCN cables required
      - Tells you how many HSL and SPCN cables you have selected
    - (1) Message previously used for Model 890 has been removed

# New Hardware Support

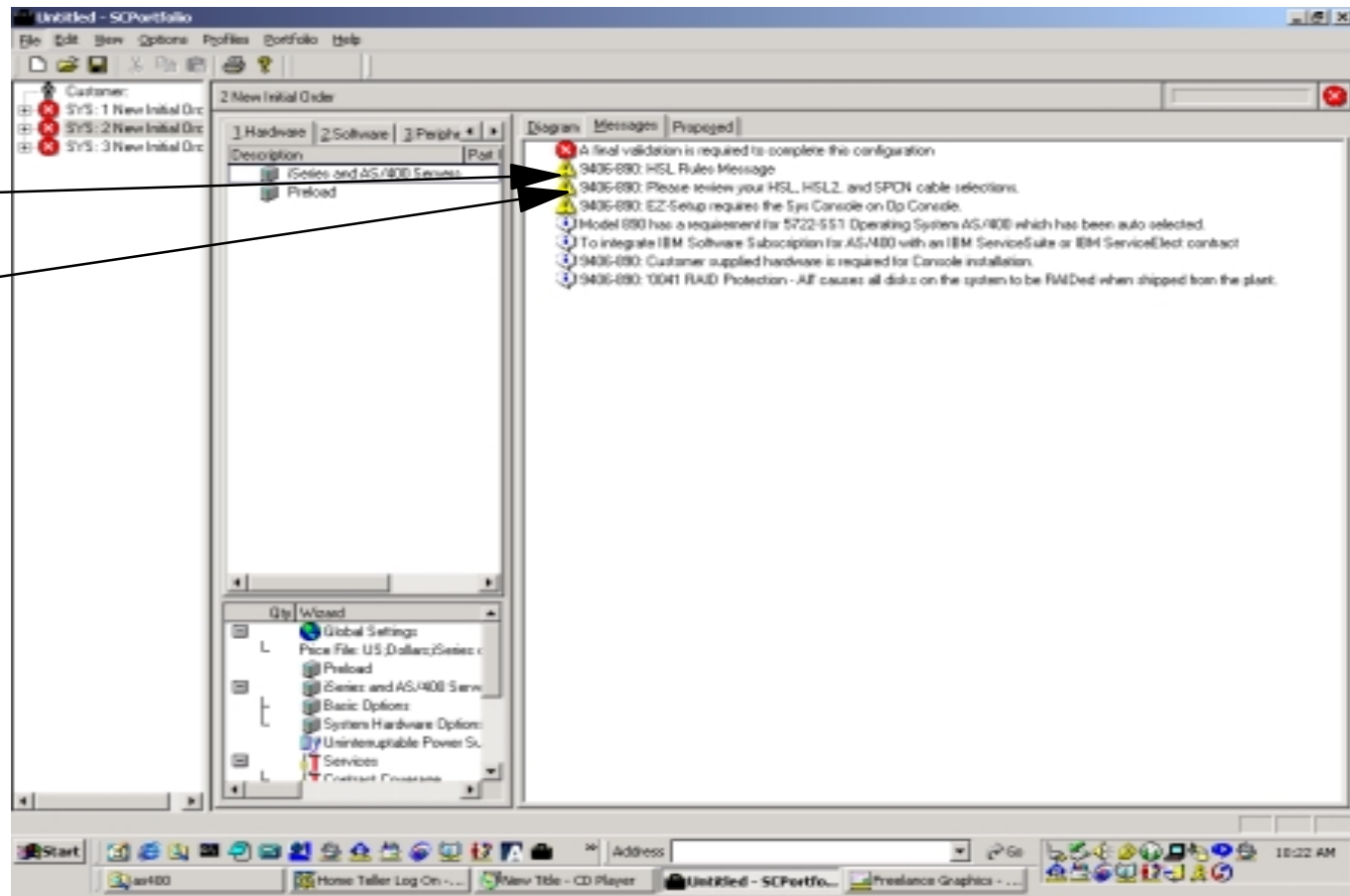
Key Topic: HSL cont.



- Previous messages for Model 890

Message 1 'Rules' (eliminated)  
 Message 2 (Changed)

Note: Message 1 was either Yellow warning OR RED-X

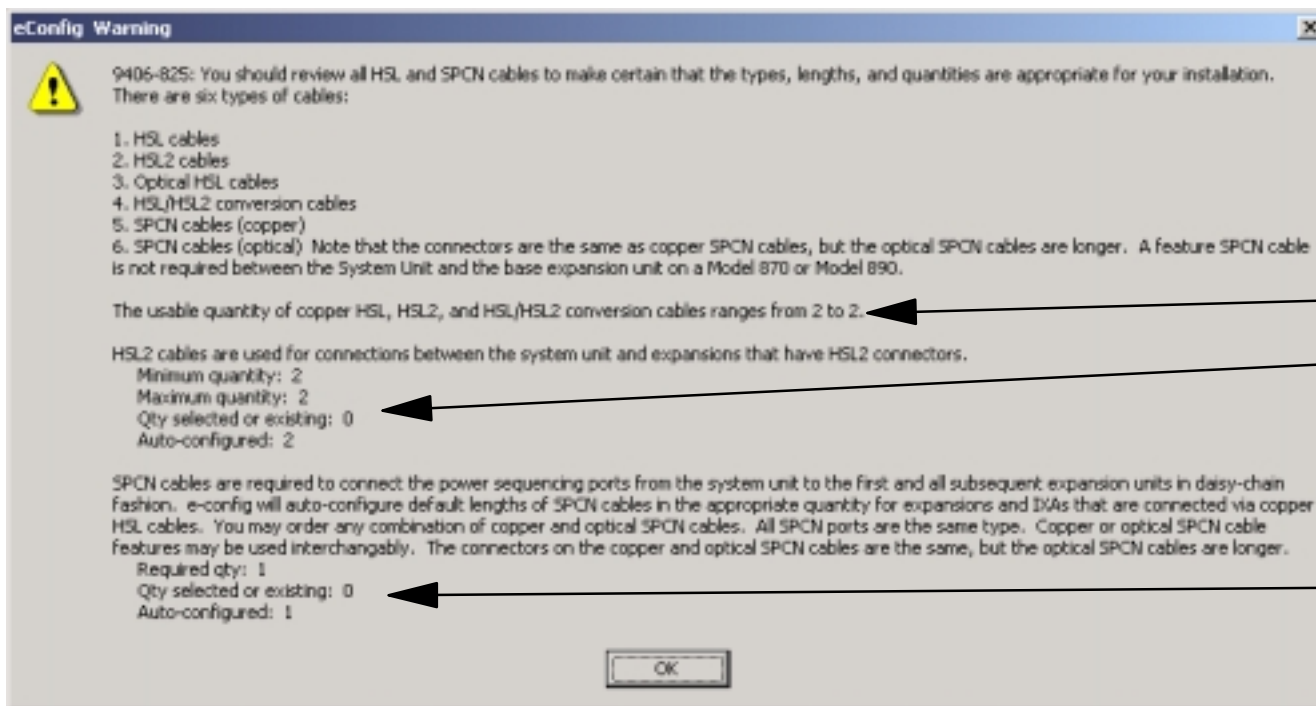


# New Hardware Support

## Key Topic: HSL cont.



- HSL Messages cont.
  - Message 2 (Yellow warning) **UPDATED**
  - 3 important pieces of information for you



Range of TOTAL usable HSL cables nn - nn

HSL '2' Cables  
 Min: nn  
 Max: nn  
 Selected: nn  
 Auto-configured: nn

Quantity of SPCN cables  
 Required: nn  
 Selected: nn  
 Auto-configured: nn

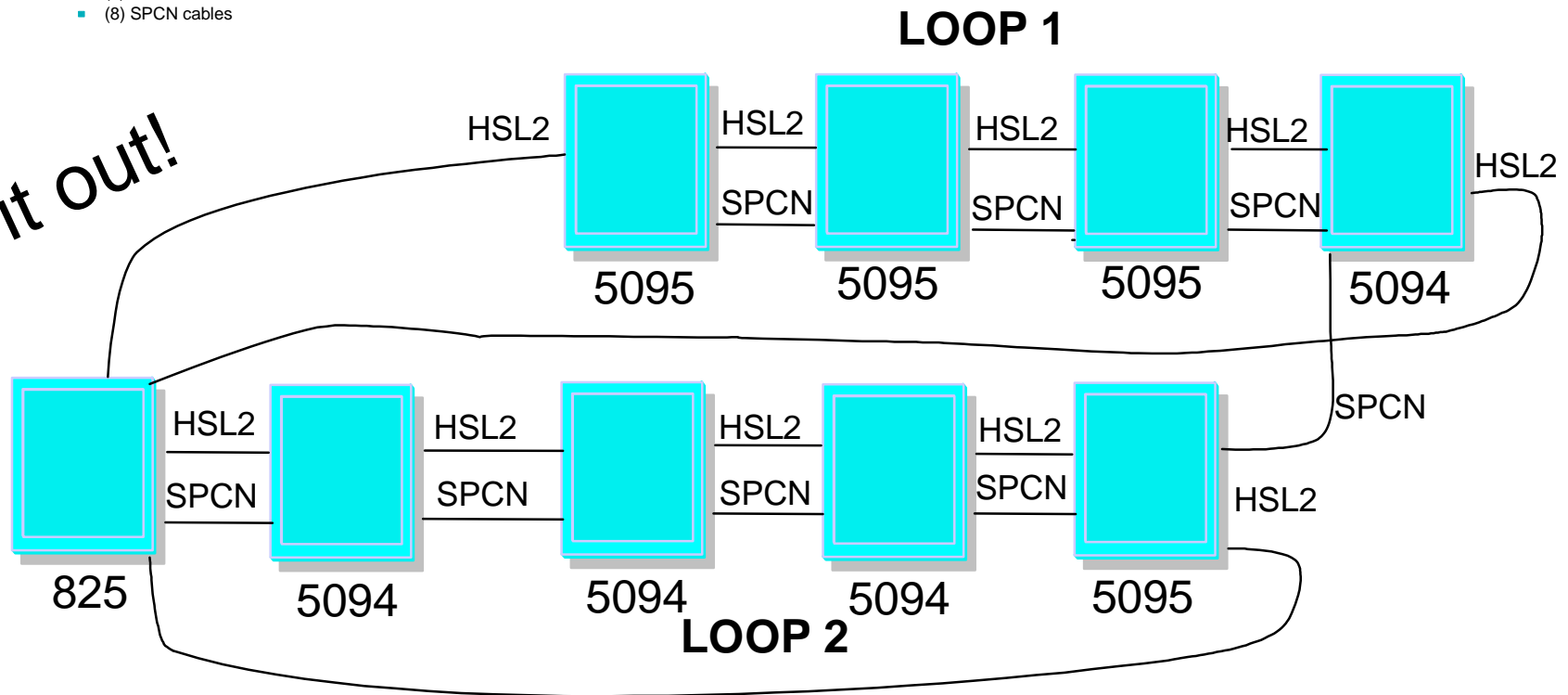
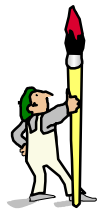
# New Hardware Support

## Key Topic: HSL cont.



- Let's take a couple examples:
  - Example 1: Model 825 Server Feature #0873 Processor Feature #2473 (3/6 - Way)
    - (4) #5094 PCI-X expansion towers
    - (4) #5095 PCI-X Mini-expansion towers
    - No IXS
    - All copper, no optical
  - What cables do I need?
    - Let's draw an example out of 1 potential solution..
    - (0) Conversion cables (HSL1/2)
    - (10) HSL '2' cable
    - (0) HSL '1' cable
    - (8) SPCN cables

Draw it out!



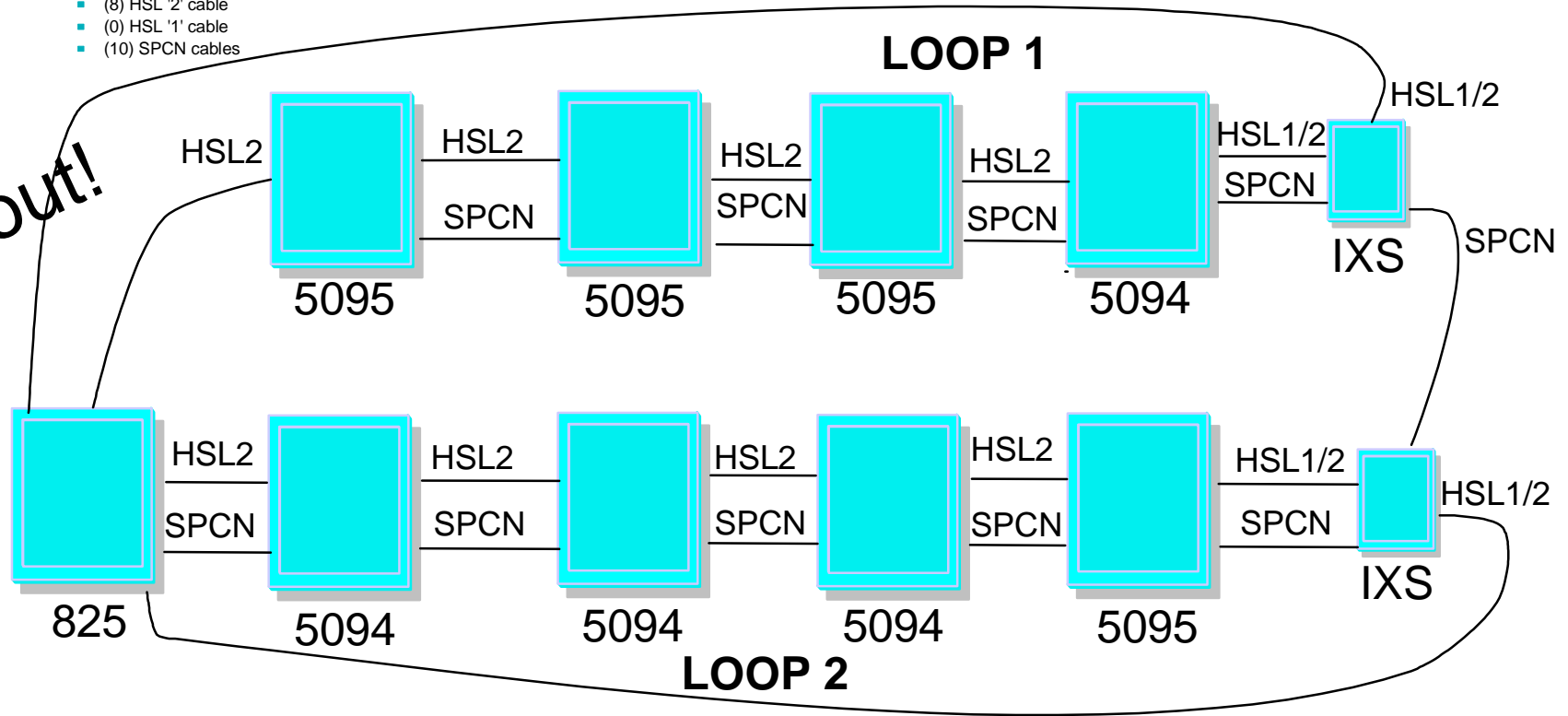
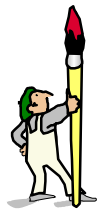
# New Hardware Support

## Key Topic: HSL cont.



- Let's take a couple examples:
  - Example 2: Model 825 Server Feature #0873 Processor Feature #2473 (3/6 - Way)
    - (4) #5094 PCI-X expansion towers
    - (4) #5095 PCI-X Mini-expansion towers
    - **(2) IXS**
    - All copper, no optical
  - What cables do I need?
    - Let's draw an example out of 1 potential solution..
    - (2-4) Conversion cables (HSL1/2)
    - (8) HSL '2' cable
    - (0) HSL '1' cable
    - (10) SPCN cables

**Draw it out!**





# New Hardware Support

## *New Products*

- **Towers (require V5R2)**
  - Previously announced/supported PCI-X Towers (Model 890)
    - **#9094** Base PCI I/O Enclosure
    - **#8093** Optional Base 1.8m I/O Rack
  - **New PCI-X Towers**
    - **#8094** Optional Base 1.8m I/O Rack (Model 890)
    - **#5095** PCI-X I/O Tower (12 Disk)
      - 7 PCI-X slots
      - **#0595** rack mounted #5095
    - **#5088** PCI-X Expansion Unit
      - 14 PCI-X slots
      - **#0588** rack mounted #5088
    - **#5094** PCI-X I/O Tower (45 Disk)
      - 14 PCI-X slots
    - **#5294** PCI-X I/O Tower (90 Disk)
      - Equivalent to (2) #5094s
    - Attach to 'old' and 'new' System Models (except #8094)
      - Refer to announcement letter for specific models





# New Hardware Supports

## *New Products cont.*



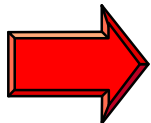
- **I/O Processors and Adapters (require V5R2)**
  - **#2844** I/O Processor (high performance)
    - Where do I find the new feature?
      - Hardware-->System Options-->IOPs-->IOPs
  - **#2757** PCI-X Ultra **RAID** Disk Controller (high performance)
    - Minimum of 3 disk in RAID array
    - Controls up to 18 disk
    - Where do I find the new feature?
      - Hardware-->System Options-->IOPs-->IOPs
  - **#2782** PCI-X **RAID** I/O Adapter (entry)
    - Minimum of 3 disk in RAID array
    - Controls up to 12 disk
    - Model 800, 810, 825 and #5095/#0595 only
    - Where do I find the new feature?
      - Hardware-->System Options-->IOPs-->IOPs
  - **#5702** PCI-X Ultra **Tape** Controller
    - 1 or 2 external tape drives
    - Where do I find the new feature?
      - Hardware-->System Options-->IOPs-->IOPs
  - **#5705** PCI-X **Tape/Disk** Controller (Model 800/810 only)
    - Attach 6 Disk (Non-RAID) and/or 1-2 tape/optical internal devices
    - Where do I find the new feature?
      - Hardware-->System Options-->IOPs-->IOPs
- **Other**
  - **#4531/#4631** DVD-ROM
    - Where do I find the new feature?
      - Hardware-->System Options-->Tape-->Feature Tape/CD-ROM/DVD

# New Hardware Support

## New Products cont.



- **Internal Disk Drives (require V5R2)**
  - Require new PCI-X I/O towers **OR**
    - Base system for Model 800, 810, 825, 870, 890
  - **#4326** 35.16 GB 15K RPM Disk (#7508 Qty 150)
    - Where do I find the new feature?
      - Hardware-->System Options-->Disk-->Internal Disk Features
  - **#4327** 70.56GB 15K RPM Disk (#7509 Qty 150)
    - Where do I find the new feature?
      - Hardware-->System Options-->Disk-->Internal Disk Features



SynView: Hardware Options - Disks

Disks | Diskettes | Tape | Camms | LAN | Integ Sw | Wireless | NFS/Console | Expansions | IDPs | Add IDPs

Data Protection  
0041 RAID Protection - All

Internal Disk Features

Description	Tower	Proposed
17.54GB 15k. spm Disk Unit (4318)	PO	3
35.16GB 15k. spm Disk Unit (4326)	PO	0
35.16GB 15k. spm Disk Unit (4319)	PO	0
70.56GB 15k. spm Disk Unit (4327)	PO	0

Indicate your choice for load source  
0829 #4326 Load Source Specify

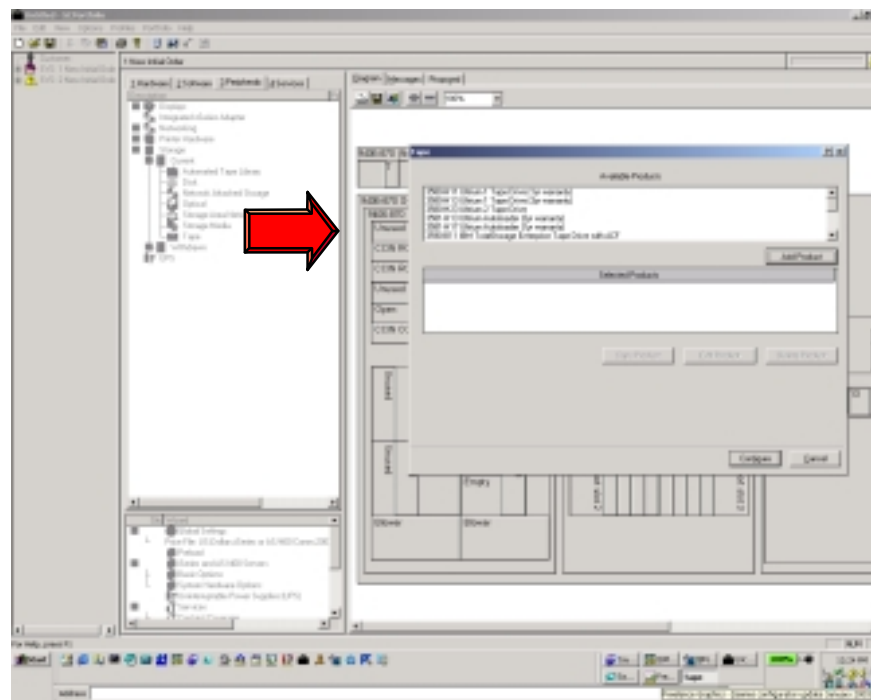
Maximums checked when leaving this page	Migrated	New System
Total internal disk units/Read Cache Devices	--	2047
internal disk unit capacity (in GB)	--	71982.852

< Previous Next > OK Cancel Reset Page

# New Hardware Support

## *New Products cont.*

- **New External Tape**
  - 3580-H23 Ultrium 2 Tape Drive
  - 3580-L23 Ultrium 2 Tape Drive (low voltage)
  - Requires controller #2768 (old) or #5702 (new)
  - Where do I find the new feature?
    - Peripherals-->Storage-->Current-->Tape



# New Hardware Support

## *General Changes and Updates*

- New upgrade paths supported (9406, 9404, 9402)
  - Model 270 --> Model 810 (2-Way to 2-Way only)
  - Model 720 --> Model 810/825
  - Model 730 --> Model 810/825/870
  - Model 740 --> Model 825/870/890
  - Model 810 --> Model 810
  - Model 820 --> Model 810/825/870
  - Model 825 --> Model 825/870
  - Model 830 --> Model 825/870/890
  - Model 840 --> Model 870/890
  - Model 870 --> Model 870/890
  - Model 890 --> Model 890
  - Refer to announcement letter for detailed upgrades supported
- Upgrade paths announced but not yet supported in e-config (Available 3/10/03 in e-config)
  - Model 800 #2463 --> Model 800 #2464
  - Upgrades into Model 890 processor #2498
  - Model 810 Standard Package --> Model 810 Standard Package

# New Hardware Support

## *General Changes and Updates*

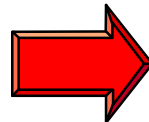
- January 28 announcements not yet supported in e-config
  - Upgrade paths noted on previous page
  - CUoD (temporary)
  - Dual Line Cords
  - Package to Package upgrades (Between different types of packages)
  - iSeries for Domino Servers
    - Model 810 Server/Processor Feature
      - #0769/#2466
      - #0770/#2467
      - #0771/#2469
    - Model 825 Server/Processor Feature
      - #0772/#2473
      - #0773/#2473
  - Configurator management in mixed tower (PCI-X towers and non-PCI-X towers) configurations
    - #4331 (1.6GB Read Cache)
    - 15K RPM Disk units



# New Hardware Support

## General Changes and Updates

- CUoD Updates
  - Removed restriction not allowing add of POD Activations on MES with a processor change
    - New Models
    - New Model 890 processors
  - #9603 Zero-Priced POD
    - Defaulted on configuration
      - Initial orders
      - Model Upgrades of 'Old' hardware into --> 'New' hardware
    - Can be de-selected
    - Not considered a 'start-up' processor for software licensing
  - Removed message about VPD for new Models



iSeries and AS/400 Servers - Processor

Processor | Basic Options | System Options | 9309 Racks

Server Type: iSeries

Server Model: Model 870

Server and Processor Feature: 0886 and 2486 8/16-Way (11500/20000 CPW)

Package Feature: 7421 Package Feature

Total Main Storage: 16394 MB

Software Version/Release: Version 5 Release 2

On-Demand Capacity

Description	Proposed
1611 POD Activation Feature	2
9603 Base POD Activation Feature	1

< Previous | Next > | Configure | Cancel | Reset Page



# New Hardware Support

## *General Changes and Updates*

- NO DUAL LINE CORD SUPPORT
  - See e-config release notes for 'workaround' procedures
  - Planned to be added to configurator on 3/10/2003
  - **NEW** features **NOT** supported
    - #5115 (8094/5094)
    - #5116 (5294)
  - Previous features **NOT** supported
    - #5102 (820)
    - #5103 (830)
    - #5104 (840)
    - #5105 (5074/8079)
    - #5106 (5079)
    - #5111 (830/840/5074/5079)
    - #5114 (9094/8093)
    - #5117 (9094)

# New Hardware Support

## *General Changes and Updates*

### ■ **Tower Auto-configuration**

- V5R1 systems will continue to auto-configure #5074
- V5R2 systems will auto-configure the new #5094
  - Includes Model 800/810 where #5095/0595 mini tower is available
  - Example: Auto-configured to support disk you are adding
- Model 270 will continue to auto-configure the #5075

### ■ **Other Auto-Configuration Notes**

- #2757 PCI-X Ultra RAID Disk Controller will be auto-configured to support #5094s
- #5095/#0595/#5088/#0588 are not auto-configured
  - You must select them

### ■ **Things to know about RAID**

- If your configuration has both controllers that support RAID arrays of 4-10 (eg. #4778) and controllers that support RAID arrays of 3-12/18 (#2782,#2757)
  - Configurator will manage RAID (if selected) based on **MIN** of 4/array
  - Configurator support will be updated in the future to support both array minimums based on the controllers selected in your configuration
  - Refer to release notes when this support is made available
- #5705 PCI-X Tape/Disk Controller (Model 800/810 only)
  - Not selectable if RAID disk protection is also selected

# New Hardware Support

## *General Changes and Updates*

- **Disk controllers:** Things to know
  - **#2782** will be defaulted
    - Model 810 with 1-12 disk
      - If RAID selected, if not will get #5705 (if 1-6)
    - Model 825 with 1-5 disk or 1-10 disk
      - Can only control (5) disk in CEC if also controlling load source
      - **Why?**
        - (3) physical SCSI connections, 1 to DVD, 1 to Tape, 1 to 1st Disk Cage
      - Can only control (10) disk in CEC if NOT controlling load source
      - **Why?**
        - Only 3 disk cages in CEC (1 supported by 1st #2782)
        - If you want (2) in the CEC you must choose them (otherwise will get #2757)
      - Same restrictions apply to #2763 in 825 CEC for upgrade scenarios
      - If #2782 is in #5095/#0595 will control 12 disk
  - **#5705** will be defaulted
    - Model 800/810 with 1-6 disk (if not RAID)
      - 7 to 12 will result in (1) #2782
      - 13 or more will result in #2757 (can select (2) #2782s if desired)

# New Hardware Support

## *General Changes and Updates*

- **Disk controllers:** Things to know cont.
  - **#2757** will be defaulted
    - Model 870 and 890 (with 3 disk)
    - Configurator won't auto-configure #2782s unless you add #5095/#0595
      - Then will auto-configure #2782 over #2757 if supports Qty of disk selected
  - **#4748/#4778** in Model 825 CEC (upgrade scenarios)
    - Can only control (10) total disk (includes loadsource, 1 tape, 1 DVD)
    - **CANNOT** control (15) Disk

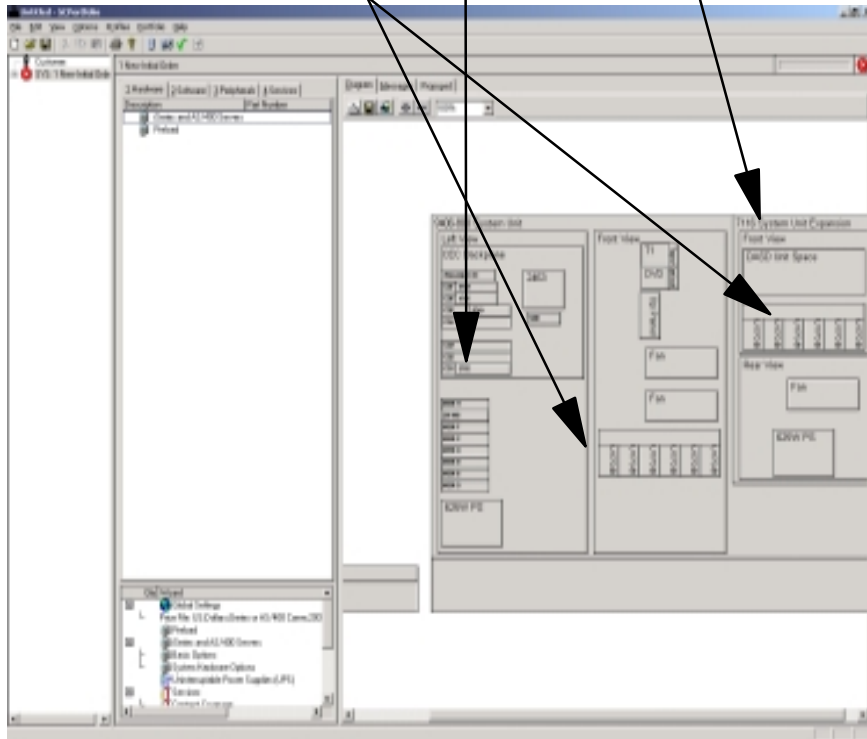
# New Hardware Support

## General Changes and Updates

- ▶ Disk controllers Things to know cont.
- Examples

### Example 1

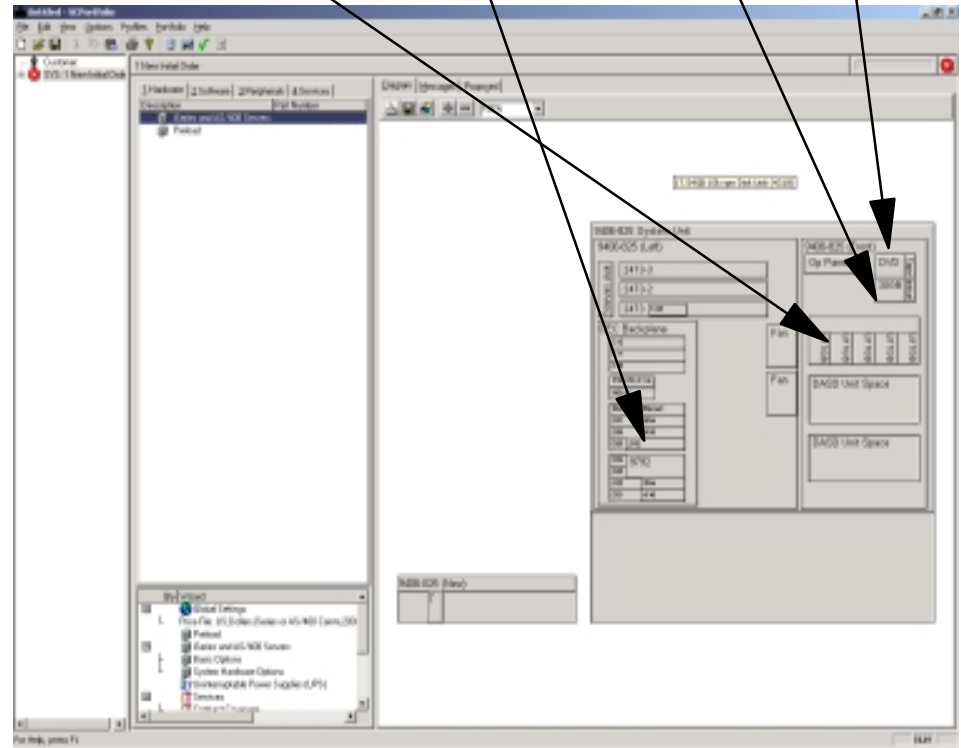
Model 800 : (12) Disk, (1) #2782, (1) #7116



**Note:** Configurator will default (1) #2782. Controls load source disk, (12) total disk, Tape, and DVD. (Least cost solution)

### Example 2

Model 825 : (5) Disk, (1) #2782 (loadsrc), tape, DVD



**Note:** Configurator will default (1) #2782. Controls load source disk, (5) total disk, Tape, and DVD. (Least cost solution)

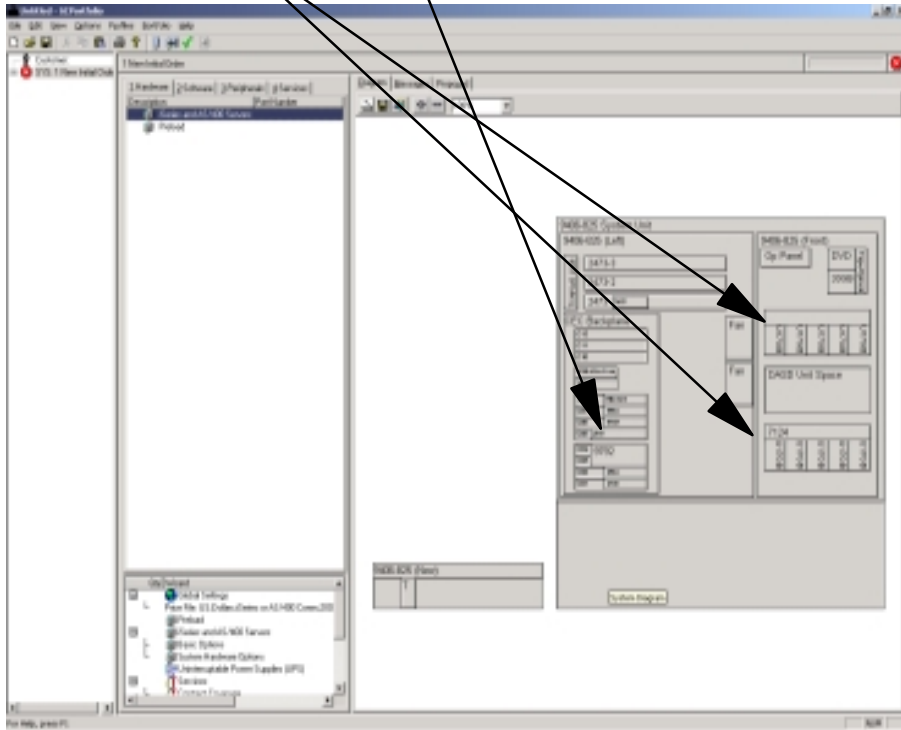
# New Hardware Support

## General Changes and Updates

- ▶ Disk controllers Things to know cont.
- Examples cont.

### Example 3

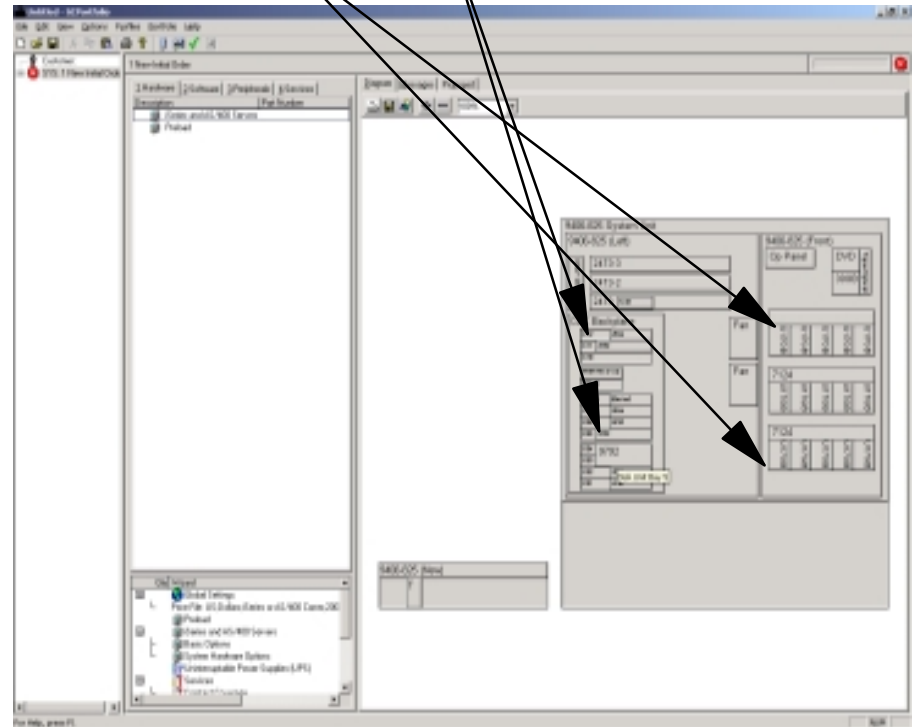
Model 825: (10) Disk, (1) #2757



**Note:** Configurator will default (1) #2757. Controls load source disk, (10) total disk, Tape, and DVD. (Least cost solution)

### Example 4

Model 825 : (15) Disk, (2) #2782 (you must select)



**Note:** (1) #2782 controls load source disk, (5) total disk, Tape, and DVD. The 2nd #2782 controls (10) disk. You must select the #2782s.



# New Hardware Support

## *New or Changed Messages*



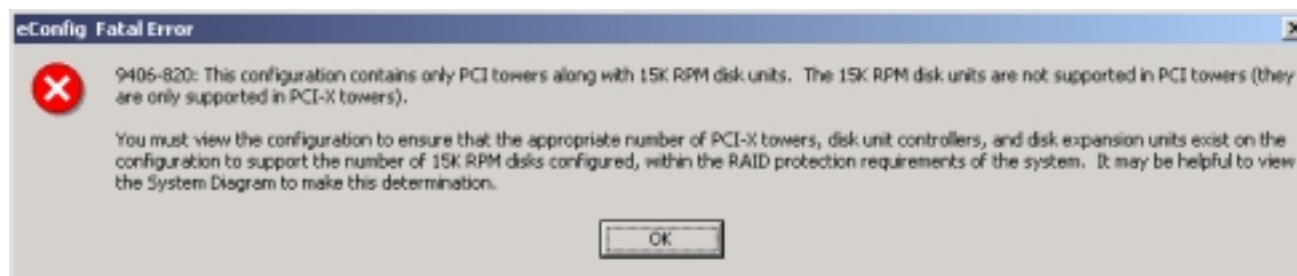
- HSL Messages (see previous pages)
  - 1 Message removed
  - 1 Message changed/updated
- Modified Tape warning message
  - Created when:
    - #4430 DVD-RAM OR DVD-ROM is only save/restore device configured
  - Message is located in the 'Message' folder tab view
  - **Message:** *"The only tape or DVD device selected may be inadequate for back-up. Please review the disk capacity and customer requirements to determine if you need a higher speed/capacity tape device to perform save and restore functions."*

# New Hardware Support

## New or Changed Messages



- 15K RPM Disk FATAL/Warning Message
  - Created when:
    - 15K RPM disk (#4326 or #4327) is selected AND
    - Both PCI-X (eg. #5094) and non-PCI-X (eg. #5074) towers
  - Message is located in the 'Message' folder tab view
  - **Message:** *"9406-xxx You MUST ensure the appropriate number of PCI-X towers have been configured for the 15K RPM disks configured."*
  - What do you need to do?
    1. View detailed message text
      - Double click on the message in the 'Message' folder tab view  
OR
      - Right click on the message and select 'Detailed error text'

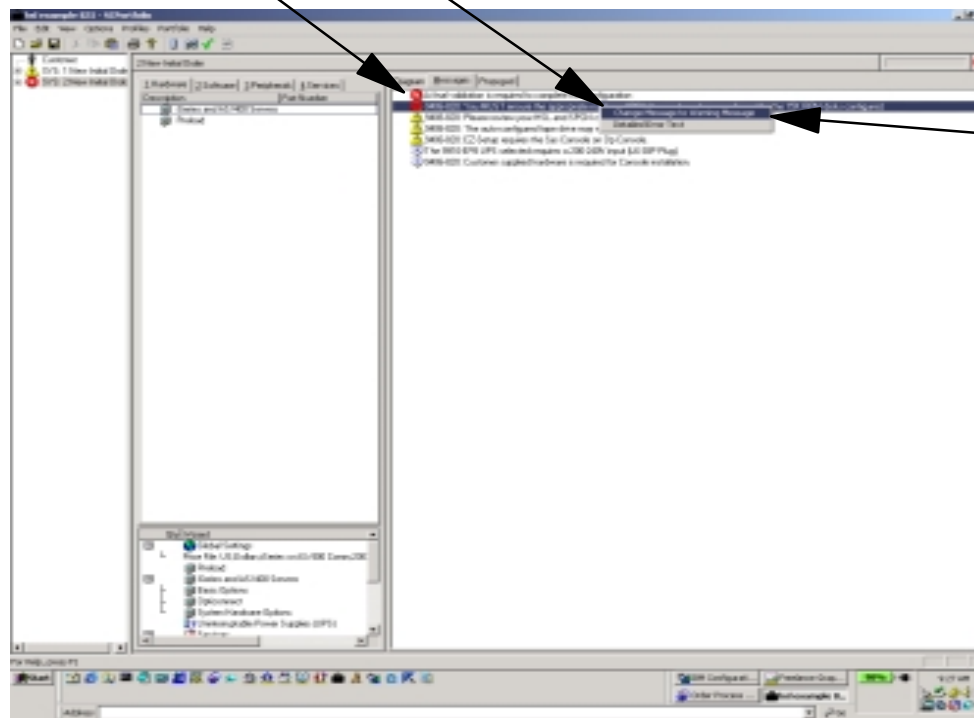


# New Hardware Support

## New or Changed Messages



- What do you need to do? cont.
  2. Review your configuration and select appropriate PCI-X towers to support the 15K RPM disks you have selected
  3. Return to the message in the folder tab view and right click on it
    - Select 'Change to Warning'
  4. Do a Final Validation



Notes:

- 1- This menu option will not be available if there are NO PCI-X towers in the configuration
- 2- The message will change from Warning back to Fatal if required. For example if you add/remove 15K disk and/or towers such that the message is required again. (The state of your configuration has changed to require or not require the message).

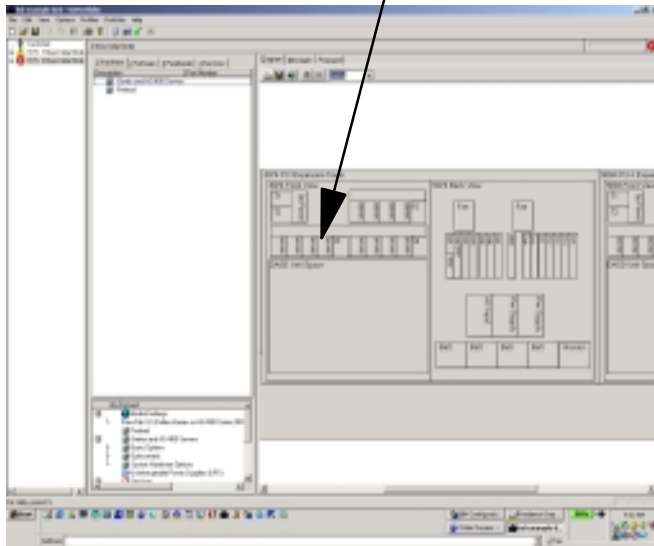
# New Hardware Support

## *New or Changed Messages*



- What do you need to do? cont.
  - Other Notes:
  - Configurator support will be updated to manage 15K disk in both PCI-X and non-PCI-X towers
    - Review release notes for when this support is available
  - Diagram will show 15K disk in non-PCI-X towers
    - Invalid situation
  - Configuration report will include warning text similar to message

Ex: 5074 with 15K disk



Customer Requested Arrival Date: 2003/01/28

System 1 - Comments

1. **WARNING:** This configuration contains a mix of PCI and PCI-X towers along with 15K RPM disk units. The 15K RPM disk units are not supported in PCI towers (they are only supported in PCI-X towers). The logic to enforce this is not currently in e-config. You must view the configuration to ensure that the appropriate number of PCI-X towers, disk unit controllers, and disk expansion units exist on the configuration to support the number of 15K RPM disks configured, within the data protection requirements of the system. It may be helpful to view the System Diagram to make this determination. Support for this configuration is planned for a future release of e-config.

# New Hardware Support

## *15K RPM Disk Important Information*

### ■ 15K RPM Disk Implications

#### ■ What you need to understand:

#### 1. Initial Order with only PCI-X Towers

- No issues

#### 2. Initial orders with PCI-X towers and non-PCI-X towers

- e-config may allow an invalid order to be placed
- Manufacturing Configurator will fail the order

#### 3. Upgrades on systems with only PCI-X towers

- No issues

#### 4. Upgrades on systems with PCI-X towers and non-PCI-X towers

- e-config may allow an invalid order to be placed
- Manufacturing Configurator may also allow an invalid order to be shipped and the problem surfaces at the customer
- **Example 1:** MES order placed for PCI-X towers and 15K disk
  - Mfg will may be able to place all 15K disk in the PCI-X towers and there should be no problem. Any disk that would not fit in the PCI-X towers ordered would be shipped loose and there may not be a tower at the customer to install them in.
- **Example 2:** MES order placed for non-PCI-X towers and 15K disk.
  - Mfg will ship disk as loose parts and when arriving at the customer, may not have a tower to install them in.



# New Hardware Support

## *New or Changed Defaults*

- Removable Media and Tape Configurator Defaults

System Model	DVD RAM (#4630)	QIC 4GB Tape (#4582)	QIC 30/60 Tape (#4684)	DVD ROM (#4531)	CD ROM (4425/4525)
250 Packages	No	Yes*	No	No	No
270, 820	No	Yes	No	No	Yes (#4525)
830, 840	No	No	Yes	No	Yes (#4425)
800 2463/0863	No	No	No	Yes	No
800 2463/0864, 2464/0865	No	No	Yes (#4584)	Yes	No
810	No	No	Yes (#4584)	Yes	No
825, 870, 890	No	No	Yes	Yes (#4631)	No

**Note** \* Model 250 Packages include the 4GB tape without using a feature code on the order



# New Hardware Support

## *New or Changed Defaults cont.*

- Removable Media and Tape Configurator Defaults cont.
  - ▶ **Rules (THE DETAILS)**
    - DVD-ROM Default (Qty 1 shown on user interface)
      - Default also on ANY upgrade/MES if a valid DVD-ROM or DVD-RAM does not exist on the configuration
    - The DVD-Rom may be de-selected and the DVD-Ram will serve as a valid substitute.
    - When the DVD-Ram is selected the 30 GB tape will be defaulted but not required.
    - When a DVD-Rom is selected, a tape (internal or external) or DVD-Ram (internal or external) will serve as a valid substitute for the 30GB tape.
      - Exception: The Model 800 Server Features 0864/0865 require a 30GB or larger tape (cannot remove)
    - On upgrades the defaults will be used with the previously mentioned substitutions being used as valid for fulfilling these requirements.
    - Defaults remain unchanged for models 270, 820, 830, 840, SB2, SB3
    - If no internal or external tape exists on the configuration, a warning message is sent.
      - The message is sent for an initial order or an upgrade/MES configuration.
    - If DVD-RAM is the only save/restore device configured and no other tape exists on the system (includes customer supplied), send a warning message
      - eg. Message text: "The only tape or DVD device selected may be inadequate for back-up. Please review the disk capacity and customer requirements to determine if you need a higher speed/capacity tape device to perform save and restore functions."
      - For all systems (except Model 800 Server Features 0864/0865)
    - Allow internal or external: 1- CD-ROM, 2- DVD-ROM, 3- DVD-RAM to be only removeable media device selected. Send message that this may not be adequate for backup.

# New Hardware Support

## *New or Changed Defaults cont.*

- Disk Default remains the 17.54GB 10K RPM (#4318) not new 15K RPM disk
- Model 800 Disk Protection and quantity of disks
  - ▶ Value Edition - No Protection, 1 disk
  - ▶ Standard and Advanced Editions - No Protection, 2 disks
  - ▶ All other Models (825, 870, 890) default RAID with
    - (3) Disk, not (4) disk

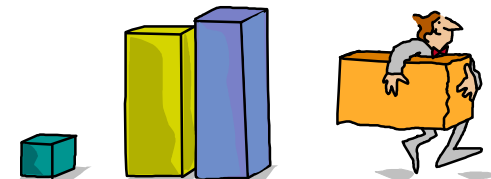
# New Hardware Support

## Withdrawals: Features

- Announced January 28, 2003

Machine Type	Model	Feature	Description	Effective Date
9406	All	0127	Field rack inst	May 7
9402/04/06	All	0197	Mdl 890 proc	May 7
9402/04/06	All	0198	Mdl 890 proc	May 7
9402/04/06	All	2487	Mdl 890 proc	May 7
9402/04/06	All	2488	Mdl 890 proc	May 7
9402/04/06	All	2738*	HSL 8-port	May 7
9402/04/06	All	5033	Mig Twr I	May 7
9402/04/06	All	5117*	30-disk exp	May 7
9402/04/06	All	8093	Mdl 890 exp	Feb 21
9402/04/06	All	9789*	HSL 4-port opt	May 7

Note \* Not supported in e-config



# New Hardware Support

## *Withdrawals: Feature Conversions*

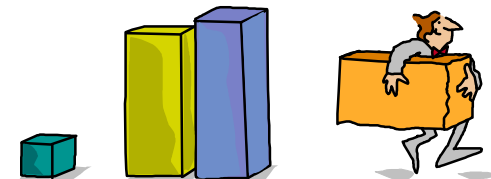
- Announced January 28, 2003

Machine Type	Model	From Feature	To Feature	Effective Date
9402/04/06	All	5101	5107	Jan 24
9402/04/06	All	5107	5117	N/A*
9402/04/06	All	5111	5117	N/A*
9402/04/06	All	8192	8193	May 7
9402/04/06	All	8079	8093	Oct 2002
9402/04/06	All	9079	9094	Oct 2002
9402/04/06	All	9329	9330	May 7
9402/04/06	All	9331	9330	May 7

**Notes:**

\* Not supported in e-config

Effective date is CONFIGURATOR effective date



# New Hardware Support

## Top 10 Things to Know



1. When selecting 15K RPM disk in a mixed tower (PCI-X towers and non-PCI-X towers) configuration, you must verify there are enough PCI-X towers to support the 15K disk selected. The configurator does not yet do this for you.
2. The Enterprise Edition on the Model 825, 870, and 890 include free hardware, (Processor activation for Linux 870/890 only, IXS) the Model 810 Enterprise Edition does not.
3. The Model 825 includes an imbedded (no feature code) Ethernet
4. The Model 800/0865 includes the concurrent maintenance cage without feature code #7116. Model 800/0863, 0864 use feature code #7116. When the processor upgrade from 2463 -> 2464 is available, there will be a feature removal of (1) #7116 (if installed) and NO add.
5. The Server Feature code is removed during an MES. It is no longer needed.
6. LPAR partition selections may be reduced on an upgrade if the proposed system supports less partitions than the installed. You will need to adjust your hardware selections accordingly.

# New Hardware Support

## Top 10 Things to Know



7. You still need to draw out your HSL/SPCN requirements. The configurator does not know your customer requirements.
8. The Model 800 Server Features 0864/0865 require a 30GB or larger tape (cannot remove).
9. V5R2 systems will auto-configure the new #5094 (not a #5074).
10. **RAID:** If your configuration has both controllers that support RAID arrays of 4-10 (eg. #4778) and controllers that support RAID arrays of 3-12/18 (#2782,#2757)
  - Configurator will manage RAID (if selected) based on **MIN** of 4/array



# New Hardware Support

## Key V5R2 Hardware Tips



### 1. Model 825

- Includes an imbedded Ethernet (no feature code)
- Be careful not to order too many!

### 2. Model 825 Disk Controller

- **#4748/#4778** placed in the Model 825 CEC
  - If controlling load source
    - Will only support 10 disks (not 12) and 2 internal tape/DVD
  - As 2nd controller in the CEC
    - Will support 15 disk and no internal tape/DVD
  - Low-Cost solution may result in the auto-configuration of a #2782
- **#2782** placed in the Model 825 CEC (also applies to #2763 when in 825 CEC)
  - If controlling load source
    - Will only support 5 disks (not 12) and 2 internal tape/DVD
  - As 2nd controller in the CEC
    - Will support 10 disk (not 12) and no internal tape/DVD
- **#2757** placed in the Model 825 CEC
  - If controlling load source
    - Will support 15 disks (not 18) and 2 internal tape/DVD

# New Hardware Support

## Key V5R2 Hardware Tips cont.



3. Avoid add and remove of the following tower types on the same order
  - #5078, #5074, #5078, #5079, #0588, #5088, #5094, #5095, #5294
    - Resulting configuration may not have enough base adapters (eg. #9691, etc.)
    - How to avoid?
      - Seperate configurations/orders for the tower adds and removes
      - A warning message is planned to be added to e-config (3/10/2003)
4. **#5705** PCI-X Tape/Disk Controller (Model 800/810 only)
  - Not selectable if RAID disk protection is also selected
5. Only #45xx tape/CD/DVD are allowed in Model 800/810 CEC (no #46xx)
6. Disk maximums when using the **#2782**
  - Example: Model 810
    - In order to get to system disk maximums you must use #5094s
    - If you are using #2782s they go into #5095 and not #5094

# Configurator question of the day..



What key change was made to how an initial order system is priced?

Hint: What hardware features are priced and which one is not



# Configurator question of the day Answer

The new Server Feature code and new Package Feature code on the 9406 system will include a price on new system orders. The Processor Feature will not.

Sample:

Initial Hardware

Product	Description	Qty	Extended Purchase	Extended Maint	Term
9406-825	iSeries 400 Server	1			
0873	0873 and 2473 3/6-Way(3600/6600 CPW)	1	<b>Price</b>		
2473	POD 3/6-Way (3600/6600 CPW)	1	<b>N/C</b>		
7418	Package Feature	1	<b>Price</b>		





*What's new in the configurator  
January of 2003?  
(New Software Support)*

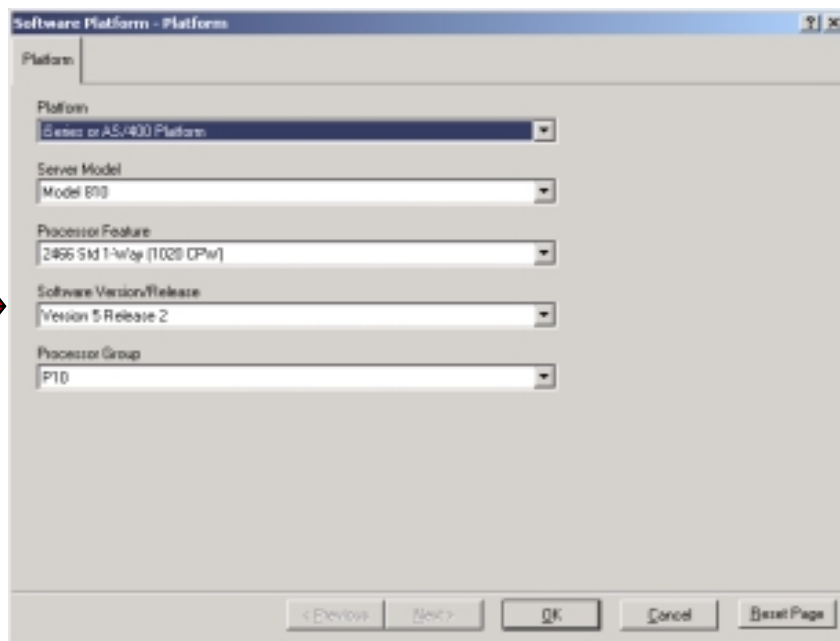


# New Software Support

## General Changes and Updates

- **Software Version/Release selection for V5R2**
  - Software Only version of e-config (shown below left)
  - Only selection available if Model 800, 810, 825, 870, or 890 selected
  - Default Model is 810, Server #0866, Processor #2466

Software-&gt;Software Platform



Software Platform - Platforms

Platform:

Platform:

Server Model:

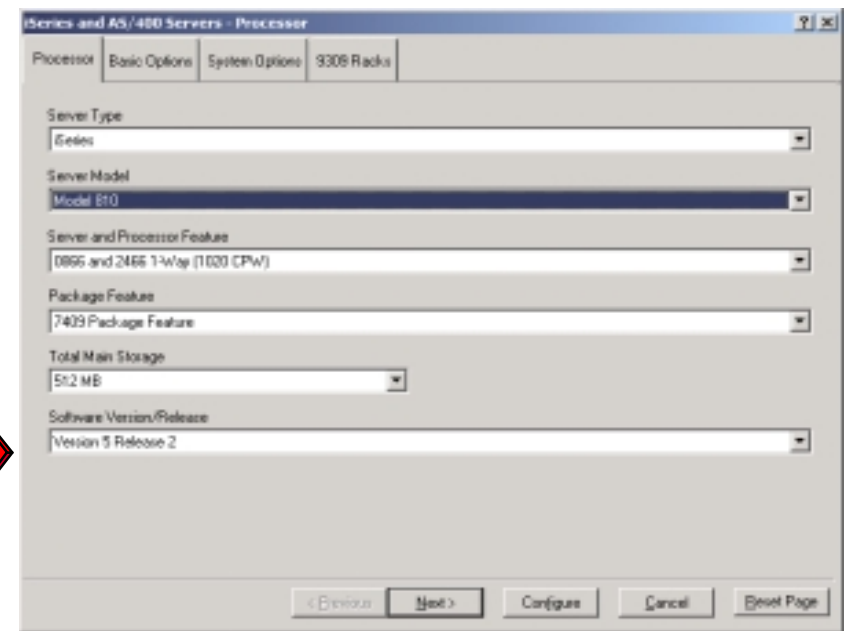
Processor Feature:

Software Version/Release:

Processor Group:

< Previous Next > OK Cancel Back Page

Hardware-&gt;iSeries and AS/400 Servers-&gt;Processor



iSeries and AS/400 Servers - Processor

Processor Basic Options System Options 9309 Racks

Server Type:

Server Model:

Server and Processor Feature:

Package Feature:

Total Main Storage:

Software Version/Release:

< Previous Next > Configure Cancel Back Page



# New Software Support

## General Changes and Updates

### ■ Software Pxx Summary by Model/Server/Package/Processor

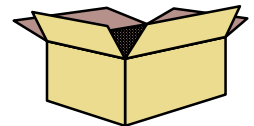
Model	Server/Processor	Pxx Level	Package Feature (Std/Enterprise)	Notes
890 - 24/32 Way	0898/2498	P50	7425/7427	
- 16/24 Way	0897/2497	P50	7422/7424	
870 - 8/16 Way	0886/2486	P40	7419/7421	
825 - 3/6 way	0873/2473	P30	7416/7418	
- 6 way	0773/2473	P30	7416	Domino 3 free
- 4 way	0772/2473	P30	7416	Domino 3 free
810 - 2 way	0869/2469	P20	7428/7430	
- 1 Way	0867/2467	P10	7410/7412	
- 1 Way	0866/2466	P10	7407/7409	
- 2 Way	0771/2469	P20	7428	Domino 2 free
- 1 Way	0770/2467	P10	7410	Domino 1 free
- 1 Way	0769/2466	P10	7407	Domino 1 free
800 - 1 Way	0863/2463(Value)	P05	7400	Same FCs as 810
- 1 Way	0864/2463 (Std)	P05	7400	Same FCs as 810
- 1 Way	0865/2464(Adv)	P10	7408	Same FCs as 810

# New Software Support

*Key Topic: Packages cont.*



- **Software included in packages**
  - Some products are **New** announced products
  - Some products are previously announced and supported in e-config
  - Where do I find the products (what wizards do I need to visit)?
  - Software ->Software Products -> **Internet Products**
    - Not in the Software ->Software Packages Wizard!
    - **5722-IWE** Application Server - Express for iSeries
    - **5733-LST** Lotus Sametime
    - **5733-LQP** Lotus Quickplace
    - **5698-ISX** Tivoli Storage Manager Extended Edition
    - **5733-TMW** Tivoli Monitoring for Web Infrastructure
    - **5733-WS4** Websphere Advanced Single Server Edition
    - **5733-WS5** Websphere Application Server V5.0



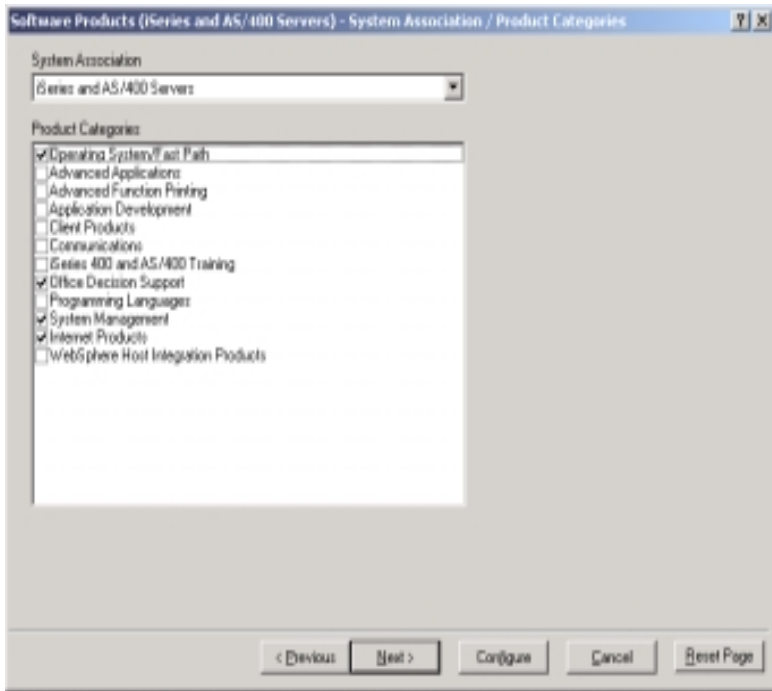
# New Software Support

*Key Topic: Packages cont.*



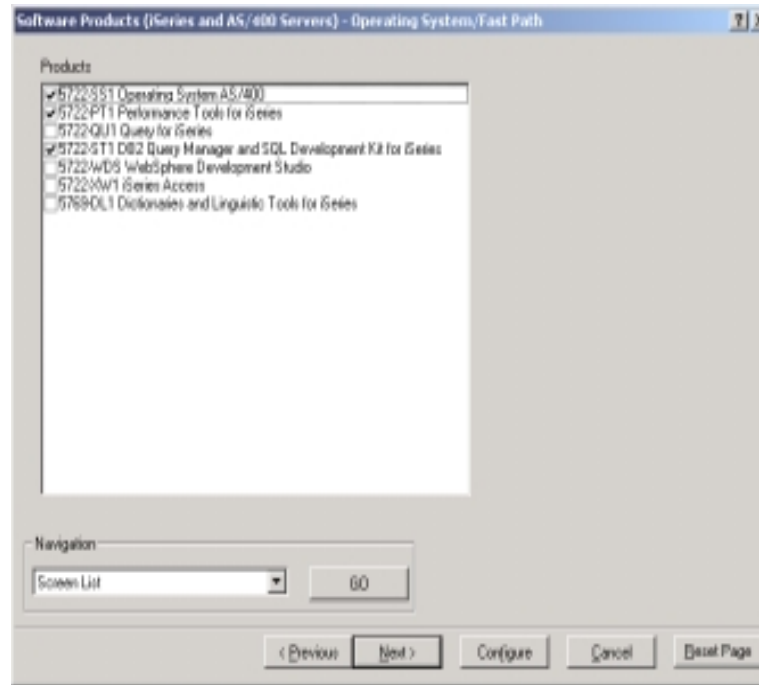
- **Software included in packages cont.**
  - What other products are included (what wizards do I need to visit)?

What Categories?

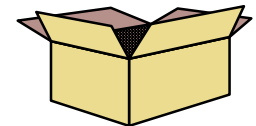


Office/Decision Support, System Management, Internet

What Operating System/Fast Path Products?



OS/400 Features  
Performance Tools  
DB2 Query Manager and SQL



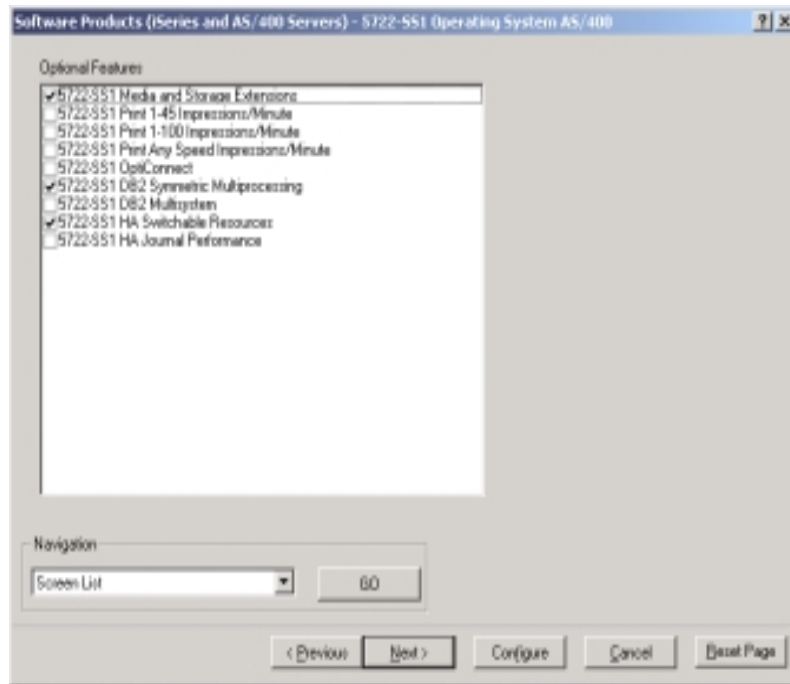


# New Software Support

*Key Topic: Packages cont.*

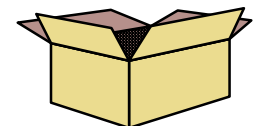
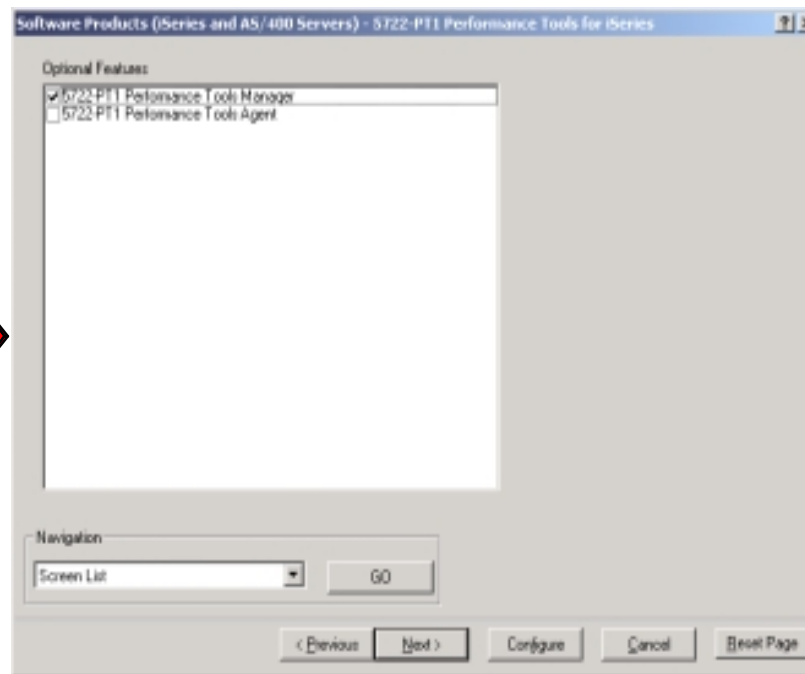
- **Software included in packages cont.**
  - What other products are included (what wizards do I need to visit)?

What 5722-SS1 Features?



M&S Extensions, DB2 SMP, HA Switchable Resources

5722-PT1 Performance Tools (with manager feature)



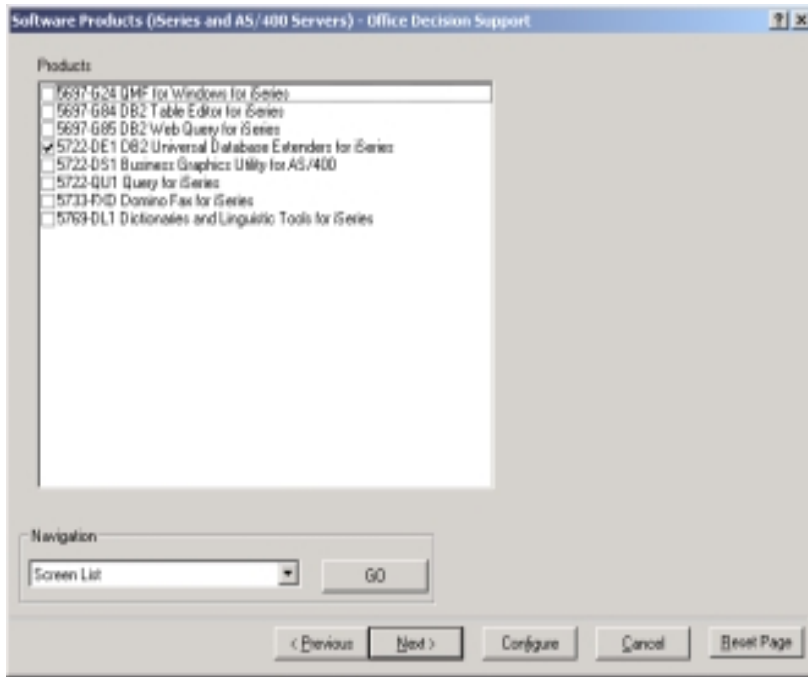
# New Software Support

*Key Topic: Packages cont.*

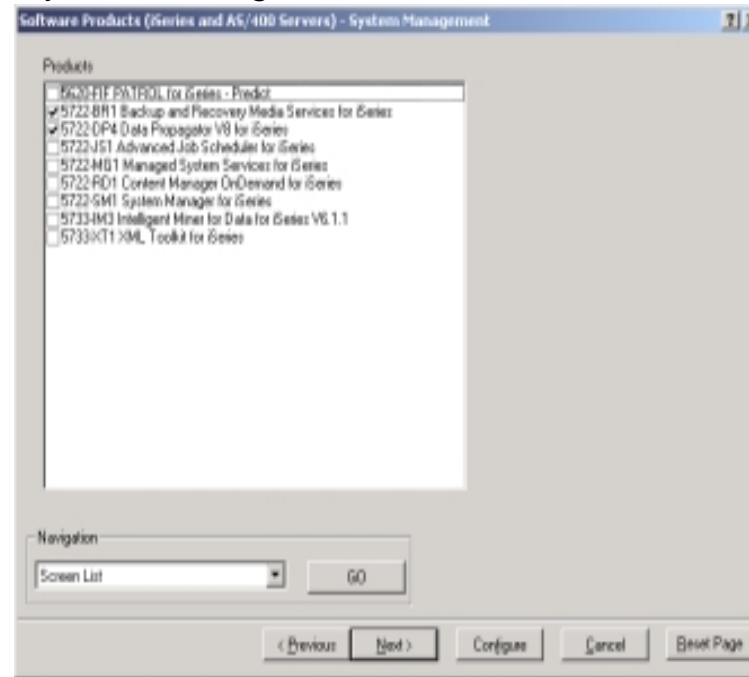


- **Software included in packages cont.**
  - What other products are included (what wizards do I need to visit)?

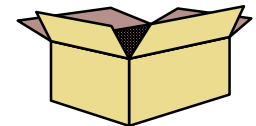
Office/Decision Support: 5722-DE1



System Management:



**5722-BR1 BMRS**  
**5722-DP4 Data Propagator**



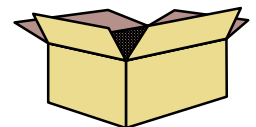


# New Software Support

## Key Topic: Packages: Model 825 Enterprise Edition



Initial Software Product	Description	Qty	Initial Software Product	Description	Qty
5698-ISX	TIVOLI STORAGE NEW OFFERINGS	1	5722-SS1	OPERATING SYSTEM/400	1
3672	OTC per iSeries Client	5	1392	Zero Price per Processor OS/400 (825)	3
3674	OTC per iSeries Processor	3	1407	P30 OTC DB2 SMP Package	1
5809	CD-ROM	1	1414	P30 OTC HA Switchable Res Package	1
9001	ASSET REGISTRATION	1	1463	BOTC M&S Ext Package	1
			1952	V5R2 PTF CUMULATIVE SUPPORT	1
5698-SX1	TIVOLI STORAGE NEW OFFERINGS	1	2924	ENG U/L SBCS PRIMARY	1
3676	OTC per iSeries Client Registration	5	3434	PRELOAD SOFTWARE PRODUCT	1
3677	OTC per iSeries Processor Registration	3	5003	License Registration (Qty 3)	1
			5819	IBM OPERATING SYSTEM/400 V5R2	1
5722-BR1	BACKUP RECOVERY & MEDIA SVCS	1	5911	MEDIA & STORAGE EXTENSIONS	1
1444	P30 OTC BRMS Package	1	5913	DB2 SYMMETRIC MULTIPROCESSING	1
2924	ENG U/L SBCS PRIMARY	1	5919	HA SWITCHABLE RESOURCES	1
3434	PRELOAD SOFTWARE PRODUCT	1	8002	OS/400 BACKUP & RECOV V5R2	1
5819	V5R2 SUPPLY MEDIA BASE	1			
			5722-ST1	DB2 QUERY MGR & SQL DEV KIT	1
5722-DE1	DB2 UNIV DB EXTENDERS V7.1	1	0491	PG P30 VALUPAK	1
1451	P30 OTC DB2 UDE Package	1	2924	ENG U/L SBCS PRIMARY	1
2924	ENG U/L SBCS PRIMARY	1	3434	PRELOAD SOFTWARE PRODUCT	1
3434	PRELOAD SOFTWARE PRODUCT	1	5819	V5R2 SUPPLY MEDIA	1
5819	V5R2 SUPPLY MEDIA	1			
			5733-A84	WEBSPPHERE APPLSVR V5 ISERIES	1
5722-DP4	DATAPROPAGATOR- ISERIES V8.1	1	4487	WAS REGISTRATION 3YR	3
1458	P30 OTC DataProp Package	1			
2924	ENGLISH U/L SBCS PRIMARY	1	5733-A87	1 Year Maintenance for 5733-LST	1
3434	PRELOAD SOFTWARE FEATURE	1	4649	OTC per Seat Registration	100
5819	DB2 DATAPROPAGATOR FOR ISERIES	1			
			5733-A88	1 Year Maintenance for 5733-LQP	1
5722-PT1	PERFORMANCE TOOLS - ISERIES	1	4647	OTC per Seat Registration	100
0299	P30 VALUPAK - BASE	1			
0375	P30 VALUPAK - MGR FEAT	1	5733-A89	1 Year Maintenance for 5733-TMW	1
2924	ENG U/L SBCS PRIMARY	1	4650	OTC per Processor Registration	3
3434	PRELOAD SOFTWARE PRODUCT	1			
5819	V5R2 SUPPLY MEDIA BASE	1	5733-LQP	Lotus Quickplace	1
5911	MANAGER FEATURE	1	2924	English U/L SBCS Primary	1
			4646	OTC per Seat	100
			5809	CD-ROM	1



Note: Software products and their corresponding maintenance products are not sorted together

USA Example feature codes



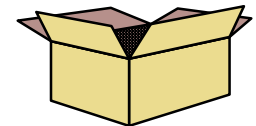
# New Software Support

## Key Topic: Packages: Model 825 Enterprise Edition



Initial Software Product	Description	Qty
5733-LST	Lotus Sametime	1
2924	English U/L SBCS Primary	1
4651	OTC per Seat	100
5809	CD-ROM	1
5733-SU3	Software Subscription for iSeries 3-Year, Renewable	1
4606	P30 Basic OTC 3-Yr	1
5733-SX3	Software Support for iSeries 3-Year, Renewable	1
3878	P30 Basic OTC 3-Yr	1
5733-TMW	Tivoli Monitoring for Web Infrastructure	1
2935	Multilingual Language	1
4648	OTC per Processor	3
5809	CD-ROM	1
5733-WS5	WEBSPPHERE APPLSVR V5 ISERIES	1
3434	Preload Order Tracking	1
3472	FULL CAPACITY INDICATOR	1
4643	Zero Price per Processor Base License	3
5809	CD-ROM BASE LICENSE	1

A LOT of Software!



Note: Software products and their corresponding maintenance products are not sorted together  
 USA Example feature codes

# New Software Support

## New Products



- **5722-IWE IBM Websphere Application Server - Express for iSeries**

- Where?

- Software ->Software Products -> Internet Products

- What are the rules?

- Available **via V5R2 'Packages' ONLY**

- Available world-wide

- **Initial Order**

- Min and Max #1439 = Number of Startup Processors

- Preload systems include #3434 and 5372-IS5 #6007

- Maintenance product 5733-A86 with #4645 Qty = Number of Startup Processors

- What's on the configuration? (Example: 810 1-Way with preload)

■ 5722-IWE	Application Server - Express	1	N/C
1439	0-Price Per Processor OTC	1	N/C
2924	English U/L SBCS Primary	1	N/C
3434	Preload Order Tracking	1	N/C
5819	CD-ROM Media	1	N/C

5733-A86	1 Year Maintenance for 5722-IWE	1	N/C
4645	0-Price Per Processor OTC	1	N/C

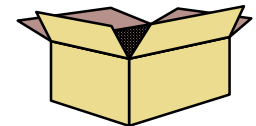
- **Upgrade Order**

- Upgrades supported from 5733-AS2 and AS3 **IF** 5733-SMx installed (NOT 5733-SWx)

- Supply feature code = #5899 (vs #5819 for initial order)

- Billing feature code Min/Max = 1

- 5733-A86 is NOT added to the order



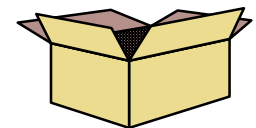
# New Software Support

## New Products cont.



- **5733-LST Lotus Sametime**
- Where?
  - Software ->Software Products -> Internet Products
  - What are the rules?
    - Available **via V5R2 'Packages' ONLY**
      - Model 825, 870, 890 Enterprise Package Only
    - Available world-wide
    - Available for **Initial Order ONLY**
      - Min and Max #4651 (EMEA/LA #V2RZ8G) OTC per Seat = 100
      - Preload not supported
      - (15) Languages feature code choices are available based on geography (see announcement)
      - (1) #5809 Supply (Media) Feature
      - No other features are supported (eg. #3470, #3471, etc.)
    - Maintenance product 5733-A87 with #4649 (EMEA/LA U2R0C2) Qty = 100
      - Only 1-Year supported
    - Can De-Select product
  - What's on the configuration? (Example: 825 3/6-Way US/APS/CA/Japan)
 

■ 5733-LST	Lotus Sametime	1	N/C
2924	English U/L SBCS Primary	1	N/C
4651	OTC per Seat	100	N/C
5809	CD-ROM	1	N/C
5733-A87	1 Year Maintenance for 5733-LST	1	N/C
4649	OTC per Seat Registration	100	N/C
- Upgrade Order
  - **NOT** supported in AAS or WTAAS
  - If on installed system, configuration remains unchanged for proposed system
  - Upgrades available **via Passport Advantage ONLY**



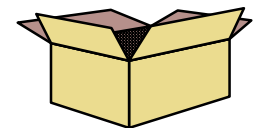
# New Software Support

## New Products cont.



- **5733-LQP Lotus Quickplace**
- Where?
  - Software ->Software Products -> Internet Products
  - What are the rules?
    - Available **via V5R2 'Packages' ONLY**
      - Model 825, 870, 890 Enterprise Package Only
    - Available world-wide
    - Available for **Initial Order ONLY**
      - Min and Max #4646 (EMEA/LA #V2RY8G) OTC per Seat = 100 (min and max)
      - Preload not supported
      - (15) Languages feature code choices are available based on geography (see announcement)
      - (1) #5809 Supply (Media) Feature
      - No other features are supported (eg. #3470, #3471, etc.)
    - Maintenance product 5733-A88 with #4647 (EMEA/LA U2R1C2) Qty = 100 (min and max)
      - Only 1-Year supported
    - Can De-Select product
  - What's on the configuration? (Example: 825 3/6-Way US/APS/CA/Japan)
 

■ 5733-LQP	Lotus Quickplace	1	N/C
2924	English U/L SBCS Primary	1	N/C
4646	OTC per Seat	100	N/C
5809	CD-ROM	1	N/C
5733-A88	1 Year Maintenance for 5733-LQP	1	N/C
4647	OTC per Seat Registration	100	N/C
- Upgrade Order
  - **NOT** supported in AAS or WTAAS
  - If on installed system, configuration remains unchanged for proposed system
  - Upgrades available **via Passport Advantage ONLY**



# New Software Support

## New Products cont.



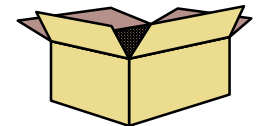
- **5698-ISX Tivoli Storage Manager Extended Edition**
- Where?
  - Software ->Software Products -> Internet Products
  - What are the rules?
    - Available **via V5R2 'Packages' ONLY**
      - Model 825, 870, 890 Enterprise Package Only
      - Available world-wide
      - Available for **Initial Order ONLY**
        - Min and Max #3674 (EMEA/LA #T3NZGB) OTC Per Processor = Qty Startup Processors (min and max)
        - Min and Max #3672 (EMEA/LA #V3NZBG) OTC Per Client = 5 (min and max)
        - Not selected in the configurator
        - Preload not supported
        - (10) Languages feature code choices (no #29xx) are available (see announcement)
        - (1) #5809 Supply (Media) Feature
        - No other features are supported (eg. #3470, #3471, etc.)
      - Maintenance product 5698-SX1 with #3677 (EMEA/LA U3NWC2) Qty = Startup Processors (min and max)
        - #3676 (EMEA/LA U3NXC2) Clients Qty = 5 (min and max)
        - Only 1-Year supported
      - Can De-Select product
    - What's on the configuration? (Example: 825 3/6-Way US/APS/CA/Japan)

Qty = Startup Processors (3)

5698-ISX	Tivoli Storage Manager	1	N/C
3672	OTC per iSeries Client	5	N/C
3674	OTC per iSeries Processor	3	N/C
5809	CD-ROM - English	1	N/C
9001	Basic Asset Registration	1	N/C
5698-SX1	1 Year Maintenance for 5698-ISX	1	N/C
3676	OTC per iSeries Client Registration	5	N/C
3677	OTC per iSeries Processor Registration	3	N/C

Qty = 5 (Min and Max)

- Upgrade Order
  - **NOT** supported in AAS or WTAAS
  - If on installed system, configuration remains unchanged for proposed system
  - Can De-Select
  - Upgrades available **via Passport Advantage ONLY**





# New Software Support

## New Products cont.

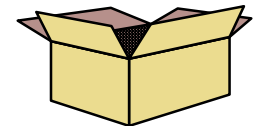


- **5733-TMW Tivoli Monitoring for Web Infrastructure**
- Where?
  - Software ->Software Products -> Internet Products
  - What are the rules?
    - Available **via V5R2 'Packages' ONLY**
      - Model 825, 870, 890 Enterprise Package Only
    - Available world-wide
    - Available for **Initial Order ONLY**
      - Min and Max #4648 (EMEA/LA #V2R28G) OTC per Processor = Qty Startup Processors (min and max)
      - Preload not supported
      - (1) Multi-Language feature code, #2935, is included
      - (1) #5809 Supply (Media) Feature
      - No other features are supported (eg. #3470, #3471, etc.)
    - Maintenance product 5733-A89 with #4650 (EMEA/LA U2R3C2) Qty = Startup Processors (min and max)
      - Only 1-Year supported
    - Can De-Select product

- What's on the configuration? (Example: 825 3/6-Way US/APS/CA/Japan)

Qty = Startup Processors (3)	→	5733-TMW	Tivoli Monitoring	1	N/C
	→	2935	Multilingual Language	1	N/C
		4648	OTC per Processor	3	N/C
		5809	CD-ROM	1	N/C
	→	5733-A89	1 Year Maintenance for 5733-TMW	1	N/C
		4650	OTC per Processor Registration	3	N/C

- Upgrade Order
  - **NOT** supported in AAS or WTAAS
  - If on installed system, configuration remains unchanged for proposed system
  - Can De-Select
  - Upgrades available **via Passport Advantage ONLY**





# New Software Support

## *New Products cont.*



- **5733-SU1 IBM Software Subscription 1 Year Registration/Renewal**
- **5733-SU3 IBM Software Subscription 3 Year Registration/Renewal**
- **5733-MAL IBM Software Maintenance After License**
  - Where?
    - Software ->Subscription/Maintenance
  - What are the **rules**?
    - V5R1 or later
    - Mutually exclusive with 5733-SW1, 5733-SW3, 5733-CA1, 5733-SMx
    - 5733-SU1 and 5733-SX1 are co-requisite products
    - 5733-SU3 and 5733-SX3 are co-requisite products (**DEFAULTED, except for Model 800**)
    - 5733-SU1/SX1 OR 5733-SU3/SX3 are required on initial system orders
      - 5733-SWx is not available for selection (on initial system orders)
    - If 5733-SMS is on installed system, cannot order these new products
    - For upgrade configurations 5733-SWx and 5733-CA1 are also selectable to allow renewals
    - Renewals valid from 5733-SMx (except SMS), 5733-SWx, 5733-SUx/SXx, and no subscription (will include 5733-MAL)
  - What's on the configuration?
    - Billing feature (same features for initial order and renewals)
    - Media feature and language feature (EMEA only)
  - Version 4 customers can order 5733-SUx/SXx as a renewal
    - Whether or not software subscription is installed or not
    - After License 5733-MAL applies if no subscription is installed
  - **NEWSYS** (configure new system hardware and upgrade software)
    - Old subscription (5733-SWx/SMx) **AND** New Maintenance (5733-SUx/SXx) **DO NOT** move to new system (you do get credit using manual administrative processes)
    - New 5733-SUx/SXx is required

# New Software Support

## *New Products cont.*



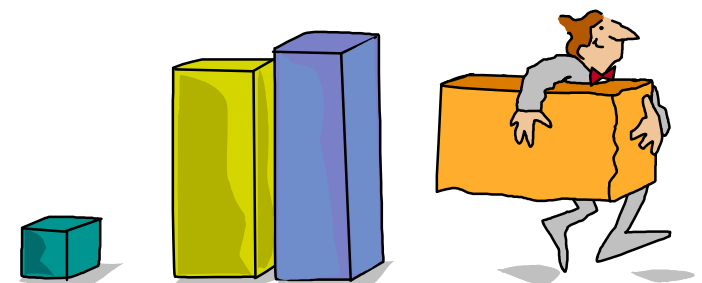
- **5733-SU1 IBM Software Subscription 1 Year Registration/Renewal**
- **5733-SU3 IBM Software Subscription 3 Year Registration/Renewal**
- **5733-MAL IBM Software Maintenance After License (not applicable to this example)**
  - What's on the configuration?

5733-SU3	Software Subscription for iSeries 3-Year, Renewable	1	Price
4606	P30 Basic OTC 3-Yr	1	Price
	Serial: N/A	Total	Price
<hr/>			
5733-SX3	Software Support for iSeries 3-Year, Renewable	1	Price
3878	P30 Basic OTC 3-Yr	1	Price
	Serial: N/A	Total	Price

# New Software Support

## *Withdrawals/Removals*

- **Announced withdrawn on 01/28/2003 (effective on 01/24/2003)**
  - **5733-SW1 IBM Software Subscription for iSeries 1-Year**
  - **5733-SW3 IBM Software Subscription for iSeries 3-Year**
  - **5733-CA1 IBM Software Subscription After License**
- These 3 products are no longer available for initial order on 01/24/2003
- Will be able to order renewals through 7/30/2003
  - NOT on or after 7/31/2003
  - With or without 5733-CA1
  - Whether or not software subscription is on installed system

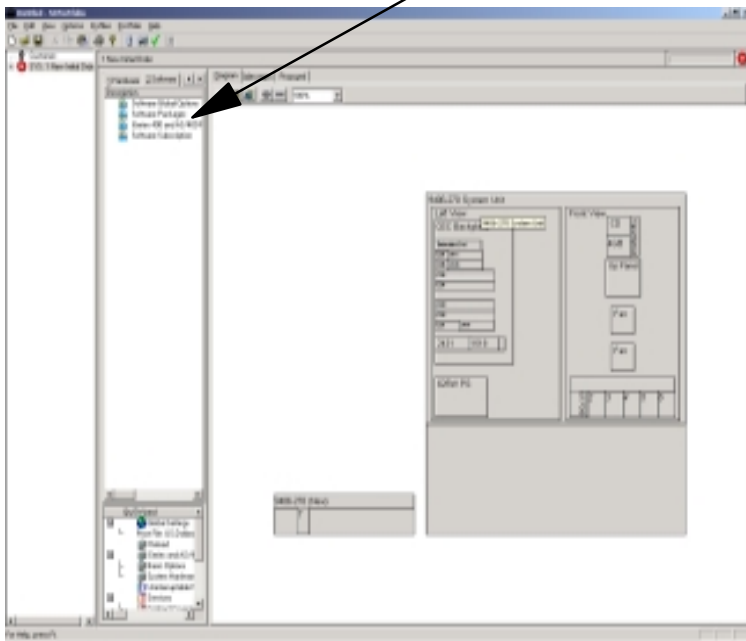


# New Software Support

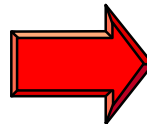
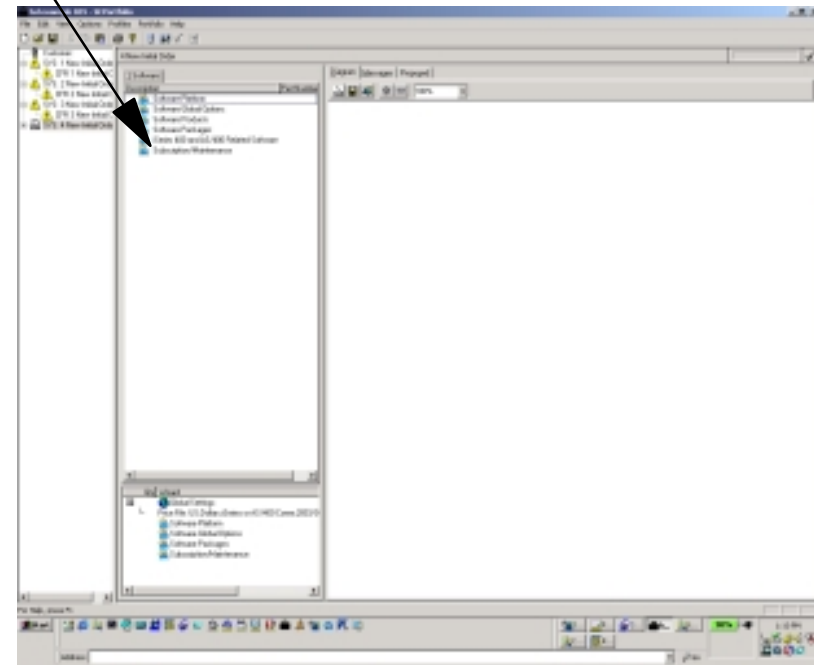
## *New/changed Selection Windows*

- Subscription/Maintenance selection window
  - **Where?**
    - Software-->Subscription/Maintenance
  - **What/Why?**
    - Renamed 'Software Subscription' to 'Subscription/Maintenance'
    - Allows support of both SW1/SW3/CA1 and SU1/SX1/SU3/SX3/MAL

Old



New

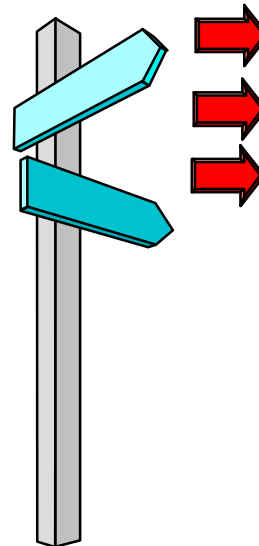
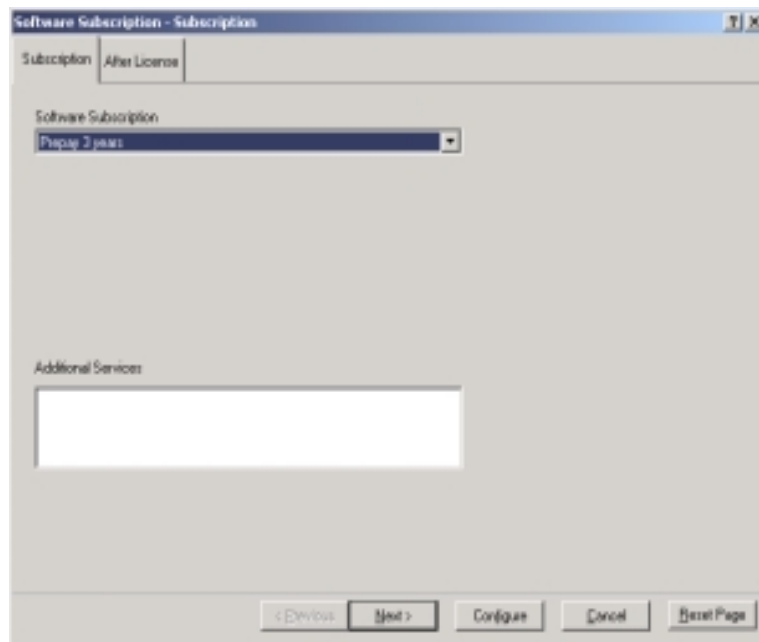


# New Software Support

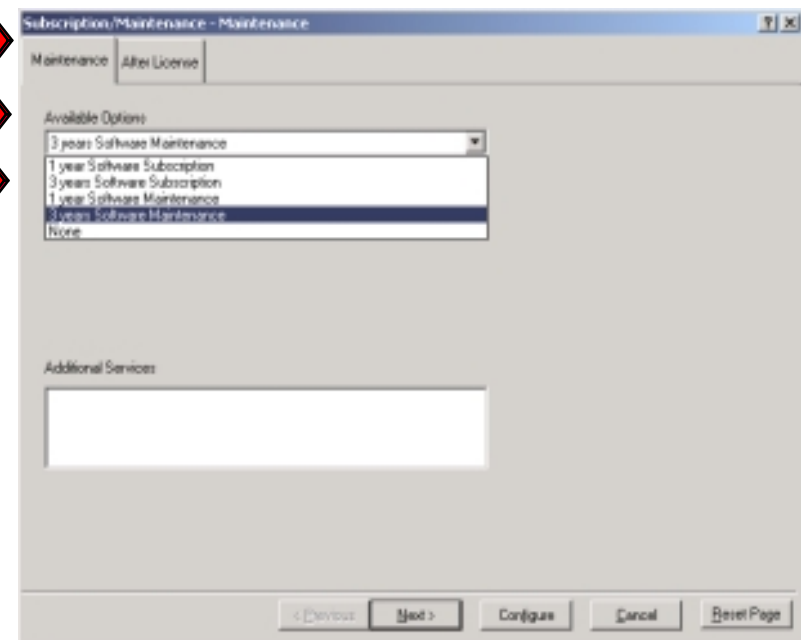
## *New/changed Selection Windows*

- Subscription/Maintenance selection window cont.
  - **Where?**
    - Software-->Subscription/Maintenance-->Maintenance
  - **What/Why?**
    - Renamed 'Subscription' folder tab to 'Maintenance'
    - Renamed selection control from 'Software Subscription' to 'Available Options'
    - Combined old software subscription and new software maintenance selections together

### Old



### New

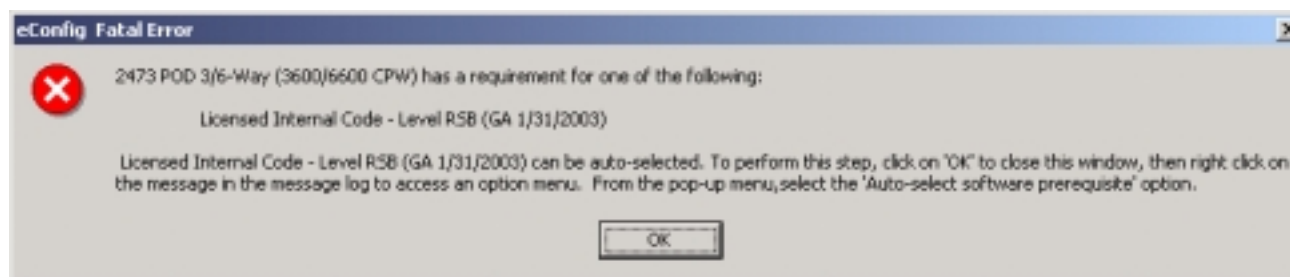


# New Software Support

## New or Changed Messages



- New warning message for Enterprise Edition
  - Created when:
    - The Enterprise Edition is selected
      - Model 825, 870, 890, 800 (0864, 0865), 810 (800, 810 msg only includes IWE)
      - Using the Server Version (hardware and software) of e-config
    - Message is located in the 'Message' folder tab view
    - **Message:** *"WebSphere Application Server - Express for iSeries (5722-IWE), Tivoli Monitoring for Web Infrastructure (5733-TMW), Tivoli Storage Manager Extended Edition (5698-ISX), Lotus Sametime (5733-LST), and Lotus QuickPlace (5733-LQP) require registration with Passport Advantage for support and future enhancements. Additional licenses must be ordered through Passport Advantage. For additional information, refer to website <http://www.ibm.com/servers/eserver/series/hardware/packages.>"*
- New FATAL message for #2691
  - Created when:
    - Feature #2691 on 5733-SS1 is de-selected and is required
      - Using the Server Version (hardware and software) of e-config
    - Message is located in the 'Message' folder tab view (Example Model 825)



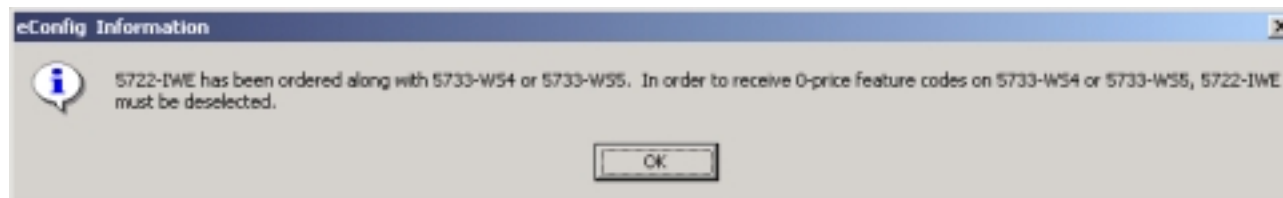


# New Software Support

## *New or Changed Messages cont.*



- New information message for selecting *5722-IWE* and either *5733-WS4* or *5733-WS5*
  - Created when:
    - *5722-IWE* is selected
    - Either *5733-WS4* or *5733-WS5* is selected
  - Message is located in the 'Message' folder tab view
  - **Message:** *"5722-IWE has been ordered along with 5733-WS4 or 5733-WS5. In order to receive 0-Priced feature codes on 5733-WS4 or 5733-WS5, 5722-IWE must be de-selected."*



# New Software Support

## *New or Changed Defaults*

- 5722-SS1 Licensed Internal Code - Level RSB (GA 2/3/2003)
  - **#2691** Optional feature of 5722-SS1
    - #2690 remains the feature for V5R1
  - When is it available for selection?
    - On V5R2 MES configurations (Software only OR Hardware/Software configurations)
  - Is it mandatory? If so, when?
    - On Model upgrades of pre-2003 Models --> 2003 Models
  - Software Subscription is required to receive this refresh
  - When is #2691 defaulted?
    - When using iSeries Server version of e-config (hardware and software)
    - On V5R2 MES/Upgrade configuration to one of the following System Models
      - Model 800 ,810, 825, 870, 890
    - De-selection is NOT allowed
      - Why?
        - To ensure this feature is ordered as it is required for Model upgrades to these new Models
        - Fatal message sent if it is de-selected
- Software Version/Release default changed from V5R1 to **V5R2**
- **Cum Tape** Changes (Software->Software Global Options->Miscellaneous)
  - Both #1951 (V5R1) and #1952 (V5R2)
  - No longer defaulted on
    - Software only configurations
    - Upgrade/MES orders
  - Defaulted on Initial Orders for New System Models 800, 810, 825, 870, 890
  - Feature #1951 and #1952 will be withdrawn and removed from the configurator in July 2003
    - Cum Tape must be ordered through IBM Service methods

# New Software Support

## *Top 10 Things to Know (by Dahl, Gisler, McLaughlin, Gerke, Obey)*



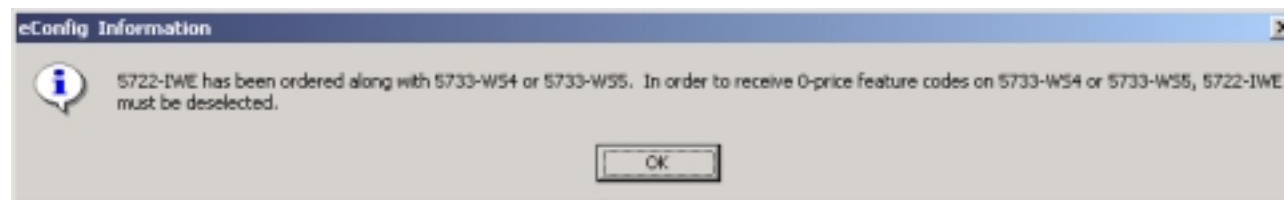
1. Enterprise Edition on Model 810 includes different software than the Enterprise Edition on the Models 825, 870, and 890
2. Model 800 defaults to 1 Year maintenance products and 1 Year Software Maintenance (5733-SU1/SX1) even though your Software Options Global Options may be 3 Year.
3. There is no longer a 'NONE' option for Software Maintenance like there previously was for Software Subscription.
4. Support for Edition to Edition upgrades (eg. Standard -> Enterprise) is not yet available.
5. When switching back and forth between Enterprise and Standard Editions during the same configuration, you may have to de-select or change your software selections. For example, the configurator defaults the Enterprise Edition, you select 'Configure', then change your selection to the Standard Edition, you have to de-select software products included in the Enterprise Edition and not included in the Standard Edition.

# New Software Support

## Top 10 Things to Know (by Dahl, Gisler, McLaughlin, Gerke, Obey)



6. When you get **5722-IWE** Application Server - Express for iSeries, versus **5733-WS4** Websphere Advanced Single Server Edition or **5733-WS5** Websphere Application Server V5.0, one product will be chargeable and one will not.
  - Example 1: Model 810 Enterprise Edition
    1. **5722-IWE** (free) defaulted
    2. Change to Model 825, 870, or 890 Enterprise..
    3. **5733-WS5** (chargeable) is added
  - Example 2: Model 825, 870, or 890 Enterprise
    1. **5733-WS5** (free) defaulted
    2. Can select **5722-IWE** under 'Internet Products' (will be free)
    3. **5733-WS5** will now be chargeable (see message in message folder)



# New Software Support

## Top 10 Things to Know (by Dahl, Gisler, McLaughlin, Gerke, Obey)



7. Software Subscription does NOT transfer from installed system to new system when doing a NEWSYS. Customer can receive credit for the installed Software Subscription.
8. *Passport Advantage products being delivered with the Enterprise Editions require registration with Passport Advantage for support and future enhancements. Additional licenses must be ordered through Passport Advantage. For additional information, refer to website <http://www.ibm.com/servers/eserver/series/hardware/packages>.*
9. You only receive software products included in Editions (eg. 5722-IWE, 5698-ISX, etc.) for an initial order of a new 2003 hardware system or a Model upgrade from a pre-2003 hardware system to a new 2003 hardware system. You do not get the software products included in Editions for other configuration scenarios.
10. 5722-SS1 Licensing is per processor on new 2003 hardware Models and new Model 890 processors.



# New Software Support

## Key V5 Software Tips



1. How can I get software for 2 different primary languages for use in an LPAR situation?

Example: Both English U/L SBCS (2924) and English U/L DBCS (2984) are needed

▶ **2 Options:**

– **Option 1: Order a set of backup-Media**

- One way involves ordering an English U/L DBCS (2984) set of the backup media (an option which ships a set of CDs for the keyed products for a charge of \$85) and the English U/L DBCS secondary (if the customer has any 5722-xxx products that are not keyed). The use of the secondary media for any non-keyed 5722-xxx products would require switching back and forth between 2924 primary and 2984 secondary media to get the necessary program and language objects when doing the 2984 V5R2 upgrade in the secondary partition. But the biggest products from an install standpoint would be installed from the backup media.

– **Option 2: Release Upgrade (to V5Rx) example here is V5R1 to V5R2**

- The other option, which would definitely be easiest for the customer, is to process the V5R2 upgrade twice, using the same starting point cfreport (V5R1 with 2924). Since the user must be on software subscription to upgrade to V5R2, there would be no charge. One of the upgrades would be done specifying that the language is English U/L SBCS (2924) and the other upgrade would specify that the language for the upgrade to V5R2 is English U/L DBCS (2984). When the 2984 upgrade is done, you must make sure that English U/L DBCS is specifically selected (check the language box in the screen list filter to make the selections) for any non-5722 products (assuming they support 2984 as an orderable language). However, there are very, very few non-5722 products that actually changed between V5R1 and V5R2 (5798-FAX and 5769-LNP are two examples) and the products that changed are the only ones that will have orders generated. Doing the upgrade from V5R1 to V5R2 twice will result in two sets of records in AAS. The next time you need to order something for the customer, you will need to tell e-config which records to use in determining the starting point for the upgrade or MES. For your awareness, the IBM program library's records would show whatever order hit their system last as the language the customer has. Since all IPLA orders are new orders to the program library, we do not expect this to cause any problems.

This second option will get your customer everything needed to upgrade all the partitions, without having to be concerned (too much) about what products he has and without needing to order the English U/L DBCS backup media or English U/L DBCS secondary media for use in upgrading the 2984 partition.



# New Software Support

## Key V5 Software Tips cont.



2. Formulas to help understand how many Priced and Free OS/400 licenses I should get:
  - **Free Licenses** = Proposed startup processors - Installed startup processors
  - **New Licenses** = Proposed licenses - Installed licenses
  - **Full Price Licenses** = New licenses - Free licenses
  - **Model to Model Upgrade Licenses** = Priced Installed Licenses
  - **Model to Model Upgrade Licenses** = (Total Installed Licenses - Installed startup processors)
  - **Proof of Entitlement Feature (#50xx)** = Free Licenses + Full Price Licenses
- Let's Take (4) Upgrade Examples..
  - **Example 1: 2003 Model MES**

Installed System	Proposed System
825 3/6 Way + 0 PODs	825 3/6 Way + 2 PODs
3 Total Licenses	5 Total Licenses
3 Free Licenses	0 Free Licenses (3 - 3)
0 Full Price Licenses	2 Full Price Licenses (2 - 0)
	0 Model to Model upgrade Licenses
#5003 (3 + 0)	#5002 (0 + 2)

# New Software Support

## Key V5 Software Tips cont.



2. cont.

- Example 2: 2003 Model upgrading to 2003 Model

Installed System	Proposed System
825 3/6 Way + 3 PODs	870 8/16 Way + 7 PODs
6 Total Licenses	15 Total Licenses
3 Free Licenses	5 Free Licenses (8 - 3)
3 Full Price Licenses	4 Full Price Licenses (9 - 5)
	3 Model to Model upgrade Licenses
#5006 (3 + 3)	#5009 (5 + 4)

# New Software Support

## Key V5 Software Tips cont.



2. cont.

■ **Example 3: 2003 Model upgrading to 2003 Model**

Installed System	Proposed System
825 3/6 Way + 3 PODs	870 8/16 Way + 0 PODs
5 Total Licenses**	8 Total Licenses
3 Free Licenses	5 Free Licenses (8 - 3)
2 Full Price Licenses	0 Full Price Licenses (3 - 5)*
	2 Model to Model upgrade Licenses
#5005 (3 + 2)	#5005 (5 + 0)

Note: \* Negative number will result in 0

\*\* Reduced OS/400 Licenses by (1) perhaps to use Linux for that processor

# New Software Support

## Key V5 Software Tips cont.



2. cont.

■ **Example 4: 2003 Model upgrading to 2003 Model**

Installed System	Proposed System
825 3/6 Way + 3 PODs	870 8/16 Way + 1 PODs
6 Total Licenses	9 Total Licenses
3 Free Licenses	5 Free Licenses (8 - 3)
3 Full Price Licenses	0 Full Price Licenses (3 - 5)*
	3 Model to Model upgrade Licenses
#5006 (3 + 3)	#5005 (5 + 0)

Note: \* Negative number will result in 0



*What's new in the configurator  
January of 2003?  
(New Services Support)*



# New Services Support

## *General Changes and Updates*

- 6942-62D Support Line
  - Not updated to include new feature codes to support:
    - Model 890
    - Model 870
    - Model 825
    - Model 810
    - Model 800
  - Rule added to not allow selection if 5733-SX1 or 5733-SX3 (iSeries Software Maintenance) is selected
    - 5733-SX1 or 5733-SX3 is mandatory on all initial orders of iSeries systems
  - 6942-CON ServiceSuite Advanced co-req products changed
    - No longer includes 6942-62D SupportLine as co-req
    - Now only includes 6942-31D System Alert as co-req
    - Why?
      - ServiceSuite Advanced included 6942-62D SupportLine as co-req
      - Conflict with Software Maintenance 5733-SX1 and 5733-SX3
- 6942-10C ServiceSuite Operation Support Service (Canada only)
  - Withdrawn
- 5733-SMS and 6965-13H Software Subscription still selectable



# New Services Support

## General Changes and Updates

- Sample Configuration Report (USA)
  - New Service Product Defaults

Initial Service

Product	Description	Qty	Extended Price	Term
6942-31D	AS/400 SYSTEM ALERT (/MO)	1	N/C	
9000	AS/400 ALERT WEEKLY NOTIFY	1	45.00	Mth
6942-CON	CONTRACT COVERAGE (N/C CODES)	1	N/C	
0098	SERVICESUITE ADVANCED	1	N/C	
6942-HMA	HARDWARE MAINT. (N/C CODES)	1	N/C	
0025	MA HOURS OF COVERAGE-DEFAULT	1	N/C	
6942-TCS	TERMS (N/C CODES)	1	N/C	
0050	REQUEST PROPOSAL FOR PRICES	1	N/C	
0053	PREPAY BILLING 3 YEAR	1	N/C	

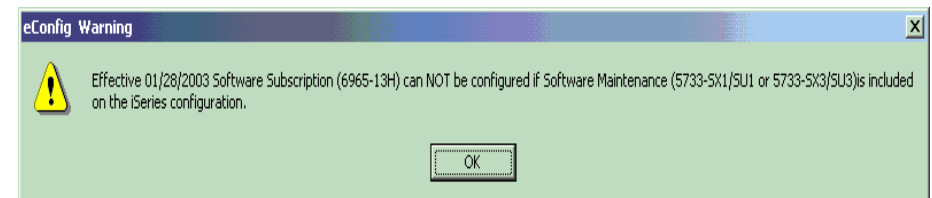
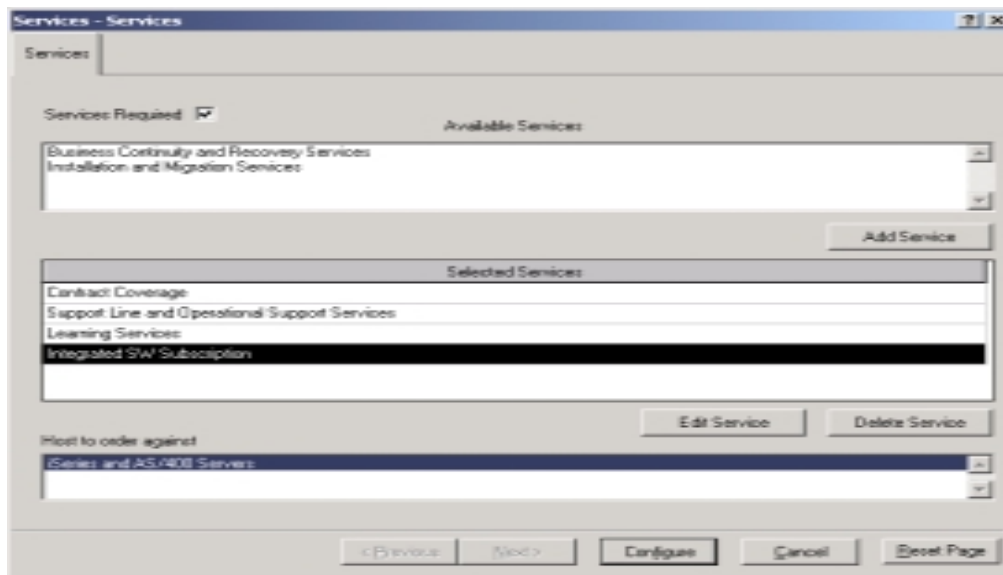
US Dollars--iSeries or AS/400 Comm price file, dated 01/17/03 00:08:36

# New Services Support

## New or Changed Messages



- New warning message for Integrated Software Subscription (6965-13H/5733-SMS)
  - Created when:
    - 6965-13H/5733-SMS is selected and
    - 5733-SX1/SU1 or 5733-SX3/SU3 is also selected
  - Message is displayed via 'pop-up' window
  - **Message:** "Effective 01/28/2003 Software Subscription (6965-13H) can NOT be configured if Software Maintenance (5733-SX1/SU1 or 5733-SX3/SU3) is included on the iSeries configuration."



# General Changes and Updates



## *Additional Configurator Information*

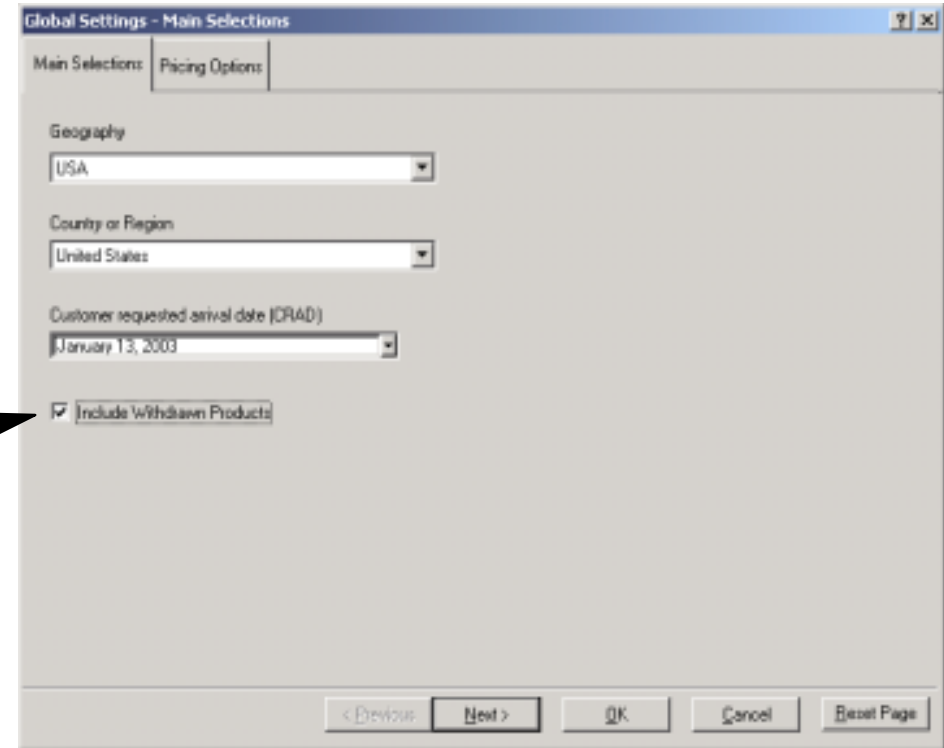
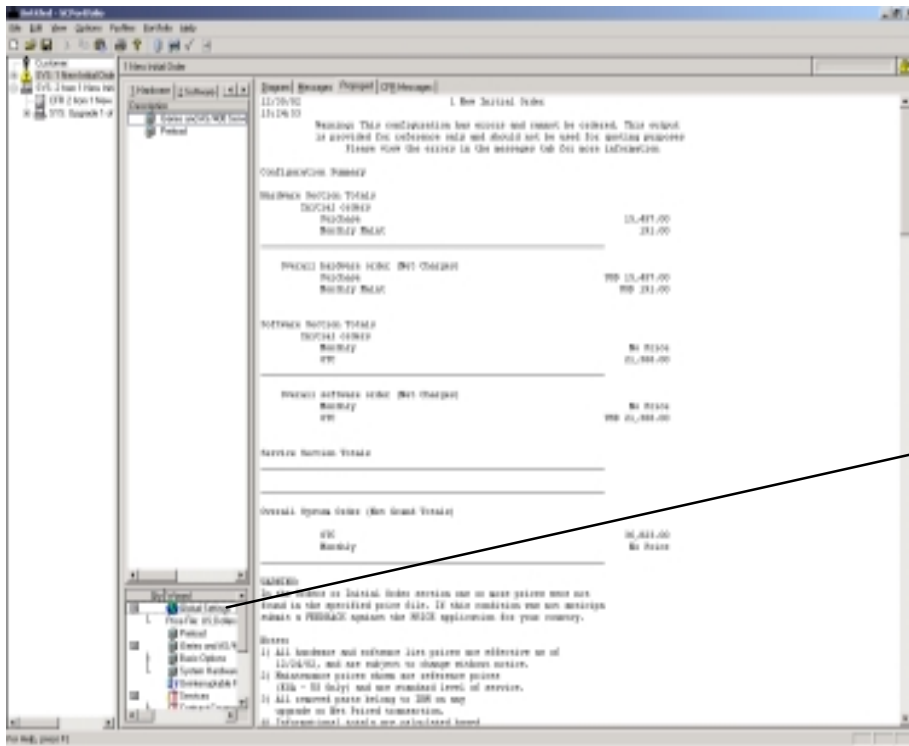


# General Changes and Updates

## Withdrawn Product Configuration



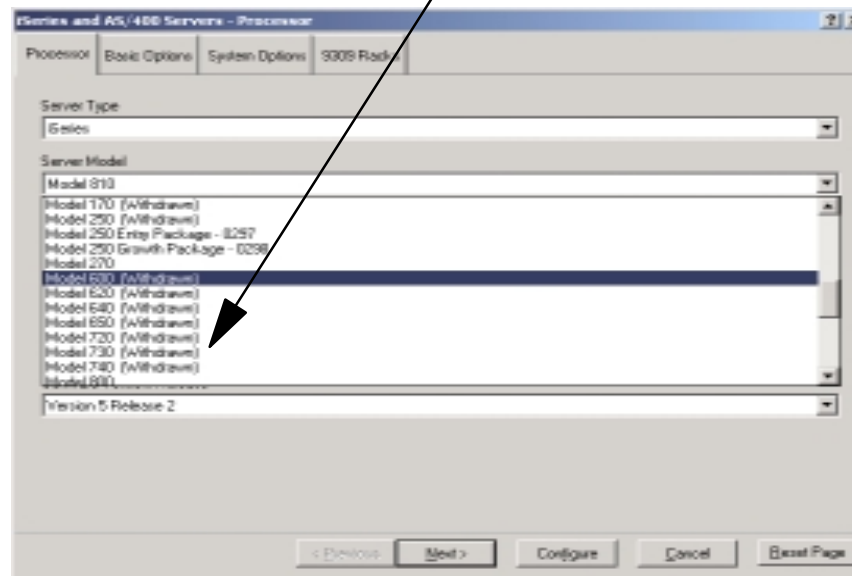
- Where?
  - ▶ Global Settings--> Include Withdrawn Products (checkbox)
    - Each configuration in your portfolio can check or not check the box



# General Changes and Updates

## *Withdrawn Product Configuration cont.*

- Product Scope
  - ▶ Hardware
    - Model 150, 170, 250, 6xx, 7xx
  - ▶ Software
    - Required releases to support hardware
  - ▶ Additional products will be evaluated as required
  - ▶ **CANNOT ORDER FORWARD AT THIS TIME !!**
  - ▶ Selection windows include '(withdrawn)' in item descriptions



# References



## *Support*





# Support

## *Tips and Techniques*



- Informal document
- Purpose
  - Provide iSeries e-config users additional information useful in doing iSeries configurations
- Available via e-config web site
  - [http://xconfig.boulder.ibm.com/ssguide/common/support/faq\\_ssguide.htm](http://xconfig.boulder.ibm.com/ssguide/common/support/faq_ssguide.htm)  
**(Business Partners)**
  - [http://econfig.boulder.ibm.com/ssguide/common/support/faq\\_ssguide.htm](http://econfig.boulder.ibm.com/ssguide/common/support/faq_ssguide.htm)  
**(IBM Internal)**
- Additional formats available by request
  - Lotus WordPro (LWP)
  - Adobe Acrobat (PDF)
- Send requests to:
  - [jpobey@us.ibm.com](mailto:jpobey@us.ibm.com)

# Support

## Additional Useful Web Sites



- Provide information to support configuration tasks
- e-config Main URL
  - <http://xconfig.boulder.ibm.com/ssguide/announce> **(Business Partners)**
  - <http://econfig.boulder.ibm.com/ssguide/announce> **(IBM Internal)**
- LVT 'LPAR Validation Tool'
  - <http://www.ibm.com/servers/eserver/series/support/planning>
    - [Select Setup and Management/Logical Partitions link](#) **OR**
  - <http://www-1.ibm.com/servers/eserver/series/lpar/systemdesign.htm>
- iSeries Support/Planning web site
  - <http://www.ibm.com/servers/eserver/series/support/planning>
- iSeries and AS/400 ESP Tools
  - <http://www-912.ibm.com/supporthome.nsf/document/23393024>

# References



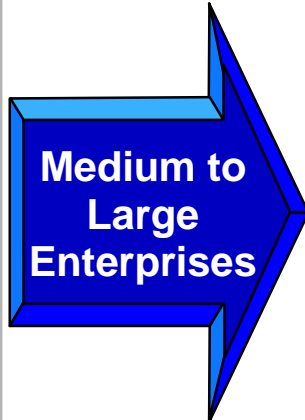
## *Backup*




# 2003 iSeries Product Line



## Earlier

- **890**
  - ▶ 16/24, 24/32 Way
  - ▶ 20000-37400 CPW
  
- **840**
  - ▶ 8/12, 12/16, 16/24 Way
  - ▶ 9000-20200 CPW
  
- **830**
  - ▶ 4/8-Way
  - ▶ 4200-7350 CPW
  
- **820**
  - ▶ 1, 2, 4-Way
  - ▶ 370-3700 CPW
  
- **270**
  - ▶ 1-Way, 2-Way
  - ▶ 150-2350 CPW





## New



- **890**
  - ▶ 16/24, 24/32 Way
  - ▶ 20000-37400 CPW
  
- **870**
  - ▶ 8/16 Way
  - ▶ 11500-20000 CPW
  
- **825**
  - ▶ 3/6-Way
  - ▶ 3600-6600 CPW

- ▶ POWER4 processors
- ▶ Capacity Upgrade on Demand
- ▶ OS/400 V5R2 Required
- ▶ 5250 OLTP (0 or Max CPW)



- **810**
  - ▶ 1-Way or 2-Way
  - ▶ 1020-2700 CPW
  
- **800**
  - ▶ 1-Way
  - ▶ 300-950 CPW

- ▶ SStar processors
- ▶ OS/400 V5R2 Required
- ▶ 5250 OLTP (0 or Max CPW)
  
- ▶ SStar processors
- ▶ OS/400 V5R2 Required
- ▶ 5250 OLTP (25 or 50 CPW)

# Simplified Model Structure

**2002**

<b>Model</b>	<b>CPW</b>	<b>Tier</b>
<b>890</b>		
24/32 Way	29300-37400	P50/60
16/24 Way	20000-29300	P50/60
<b>840</b>		
18/24 Way	16500-20200	P40/50
12/18 Way	12000-16500	P40/50
8/12 Way	9000-12000	P40/50
<b>830</b>		
4/8 Way	4200-7350	P30/40
2-Way	1850	P20/30
<b>820</b>		
4-Way	3700	P30/40
2-Way	2350	P20/30
1-Way	1100	P20/30
1-Way	600	P10/20
1-Way	370	P10/20
<b>270</b>		
2-Way	2350	P20
1-Way	1070	P10
1-Way	465	P10
1-Way	150	P05

**2003**

<b>Model</b>	<b>CPW</b>	<b>Tier</b>
<b>890</b>		
24/32 Way	29300-37400	P50
16/24 Way	20000-29300	P50
<b>870</b>		
8/16 Way	11500-20000	P40
<b>825</b>		
3/6 Way	3600-6600	P30
<b>810</b>		
2-Way	2700	P20
1-Way	1470	P10
1-Way	1020	P10
<b>800</b>		
1-Way	950	P10
1-Way	300	P05

Plus 14 Base and Domino processor features

# Detailed Product Structure

i810, i825, i870, i890

Model	n-Way	Server FC	Processor FC	Package FC	
				Standard	Enterprise
890	24/32	0898	2498	7425	7427
	16/24	0897	2497	7422	7424
870	8/16	0886	2486	7419	7421
825	3/6	0873	2473	7416	7418
810	2	0869	2469	7428	7430
	1	0867	2467	7410	7412
	1	0866	2466	7407	7409

iSeries for Domino

Model	n-Way	Server FC	Processor FC	Package FC
825	6	0773	2473	7416
	4	0772	2473	7416
810	2	0771	2469	7428
	1	0770	2467	7410
	1	0769	2466	7407

iSeries 800

Edition	n-Way	Server FC	Processor FC	Package FC
Advanced	1	0865	2464	7408
Standard	1	0864	2463	7400
Value	1	0863	2463	7400



# 2003 Detailed Product Structure

	SERVER FEATURE	PROCESSOR FEATURE	ENTERPRISE EDITION	SERVER FEATURE	PROCESSOR FEATURE	STANDARD EDITION
<b>890</b> 24/32 W	0898	2498 29300/37400 P50	7427	0898	2498 29300/37400 P50	7425
<b>890</b> 16/24 W	0897	2497 20000/29300 P50	7424	0897	2497 20000/29300 P50	7422
<b>870</b> 8/16 W	0886	2486 11500/20000 P40	7421	0886	2486 11500/20000 P40	7419
<b>825</b> 3/6 W	0873	2473 3600/6600 P30	7418	0873	2473 3600/6600 P30	7416
<b>810</b> 2 W 1 W 1 W	0869	2469 (2700 CPW/P20)	7430	0869	2469 (2700 CPW/P20)	7428
	0867	2467 (1470 CPW/P10)	7412	0867	2467 (1470 CPW/P10)	7410
	0866	2466 (1020 CPW/P10)	7409	0866	2466 (1020 CPW/P10)	7407
<b>800</b> 1 W 1 W 1 W	0865 0864 0863	2464 (950 CPW/P10) 2463 (300CPW/P05) 2463 (300 CPW/P05)	7408 7400 7400	0865 0864 0863	2464 (950 CPW/P10) 2463 (300CPW/P05) 2463 (300 CPW/P05)	7408 7400 7400

## Editions for the i810, i825, i870, and i890

	Enterprise 825/870/890	Standard 825/870/890	Enterprise 810	Standard 810
<b>Function</b>				
Support for multiple operating system (OS/400 and Linux)	X	X	X	X
Support for web modernization (enhanced WebFaced support)	X	X	X	X
Support for partitioning (up to "n" OS/400 partitions / processor)	10	10	8	4
Support for 5250 OLTP (maximum 5250 capacity)	X	--	X	--
Support for CUoD (permanent and temporary capacity)	X	X	--	--
<b>Software</b>				
▸ OS/400 (one processor license per startup processor)	X	X	X	X
▸ e-business Solution Tools				
- WebSphere (one processor license per startup processor)				
- Choice of WAS or WebSphere - Express	X	--	--	--
- WebSphere - Express	--	--	X	--
- Lotus Sametime (100 seats)	X	--	--	--
- QuickPlace (100 seats)	X	--	--	--
- DB2 Query Mgr & SQL Dev. Kit (one server license)	X	--	X	--
- DB2 SMP (one server license)	X	--	--	--
- Data Propagator (one server license)	X	--	--	--
- DB2 Extenders -- XML and Text (one server license)	X	--	--	--
▸ Datacenter Management Tools				
- Performance Tools (one server license)	X	--	X	--
- HA Switched Resources (one server license)	X	--	--	--
- Media Storage Extensions (one server license)	X	--	--	--
- BRMS (one server license)	X	--	--	--
- Tivoli Monitoring -- PAC for WebSphere (one per startup)	X	--	--	--
- Tivoli Storage Manager (one server license + 5 clients)	X	--	--	--
<b>Hardware</b>				
Processor activation for Linux (one standby processor activated)	X	--	--	--
Integrated xSeries Support (one 1.6 GHz IXS included)	(870/890 only) X	--	--	--
<b>Education</b>				
IBM Learning Services education vouchers (qty varies by Model)	X	--	--	--
IBM Global Services voucher (Choose from 3 options)	X	--	--	--

# Model 810 Edition Definition

## Standard

- **Package Function**
  - ▶ Support for Multiple Operating Systems (OS/400 and Linux)
  - ▶ Support for Web Modernization (enhanced WebFacing tool support)
  - ▶ Support for Server Partitioning (up to 4 OS/400 partitions per processor)
  - ▶ Support for 5250 OLTP (5250 Interactive CPW = 0)
- **Package Software**
  - ▶ Licensing for OS/400 (one processor license for each processor)

## Enterprise

- **Package Function**
  - ▶ Support for Multi Operating Systems (OS/400 and Linux)
  - ▶ Support for Web Modernization (enhanced WebFacing tool support)
  - ▶ Support for Server Partitioning (Up to 4 OS/400 partitions per processor)
  - ▶ Support for 5250 OLTP (**maximum 5250 capacity**)
- **Package Software**
  - ▶ Licensing for OS/400 (one processor license for each processor)
  - **Licensing for WebSphere - Express V5 for iSeries 5722-IWE (one processor license for each processor)**
  - **Licensing for DB2 Query Manager and SQL Developers Toolkit- 5722 ST1 (one server license)**
  - **Licensing for Performance Tools- 5722 PT1 (one server license)**

# Model 825/870/890 Edition Definition

## Standard

### ■ Edition Function

- ▶ Support for Multiple Operating Systems (OS/400 and Linux)
- ▶ Support for Web Modernization (enhanced WebFacing tool support)
- ▶ Support for Server Partitioning (up to 10 OS/400 partitions per processor)
- ▶ Support for 5250 OLTP (5250 Interactive CPW = 0)\*\*\*
- ▶ Support for Capacity Upgrade on Demand (permanent and temporary)

### ■ Edition Software

- ▶ Licensing for OS/400 (one processor license for each start up processor)

\*\*\* For Internal Use Only -  
Interactive

CPW information will not appear  
in the RFA or deliverables

## Enterprise

### ■ Edition Function

- ▶ Support for Multiple Operating Systems (OS/400 and Linux)
- ▶ Support for Web Modernization (enhanced Web Facing tool support)
- ▶ Support for Server Partitioning (up to 10 OS/400 partitions per processor)
- ▶ Support for 5250 OLTP (maximum 5250 capacity)
- ▶ Support for Capacity Upgrade on Demand (permanent and temporary)

### ■ Edition Hardware

- ▶ Integrated xSeries Support (One 1.6 GHz IXS included)
- ▶ One stand-by processor activated for Linux
  - Model 870 and 890 only

### ■ Education and Services

- ▶ Education Vouchers (ILS vouchers provided via Web registration: 1-825, 3-870, and 5-890)
- ▶ Services Voucher (Choice of Windows Integration, Linux, or WebSphere services)

### ■ Edition Software

- Licensing for OS/400 (one processor license for each start up processor)
- e-business Solution Tools
  - Licensing for a choice of WebSphere Application Server Version 4.0 Single Server Edition for iSeries 5733-WS4 or WebSphere Application Server 5.0 for iSeries 5733-WS5 or WebSphere Application Server - Express 5722-IWE (one processor license for each startup processor)
  - Licensing for Lotus Sametime (100 seats)
  - Licensing for Quickplace (100 seats)
  - Licensing for DB2 Query Manager and SQL Developers Toolkit 5722 ST1 ( one server license)
  - Licensing for DB2 SMP - 5722 SS1 Option 26 (one server license)
  - Licensing for Data Propagator (one server license)
  - Licensing for DB2 Extenders - XML and Text - one server license)
- Datacenter Management Tools
  - Licensing for Performance Tools - 5722 PT1(one server license)
  - Licensing for HA Switched Resources (one server license)
  - Licensing for Media Storage Extensions (one server license)
  - Licensing for BRMS (one server license)
  - Licensing for Tivoli Monitoring -- PAC for Web (one processor license for each start up processor)
  - Licensing for Tivoli Storage Manager (one server license plus five client seats)

## Expanded Capacity Upgrade on Demand Capabilities

- **"Pay as you grow" - CUoD permanent capacity**
  - ▶ Available on 825, 870 and 890
  - ▶ Essentially like 2002 CUoD for 830/840/890
    - Order key - Get key - activate permanent processor(s)
  - ▶ Different
    - the 830/840 no-charge, one-time 14 day trial usage is not used. Similar capability provided with CUoD temporary capacity
  
- **"Pay as you go" - CUoD temporary capacity**
  - ▶ Available on 825, 870 and 890
  - ▶ Before it can be used
    - Sign T's&C's agreement
    - Order no-charge MES to receive enablement code/key
  - ▶ Can activate one or more standby processor for one or more days
  - ▶ Pay by processor day
    - one standby processor running during a 24-hour period = one processor day
  - ▶ First 14 processor days (one-time) are no-charge



# Capacity on Demand Permanent Capacity

- Permanent capacity is offered on these combinations of Model / Processors

Model	Processor Feature	Startup Processors	Standby Processors	Installed Processors
825	2473	3	3	6
870	2486	8	8	16
890	2497	16	8	24
890	2498	24	8	32

- Standby processors can be permanently activated <sup>1</sup> by placing an order for a quantity of POD Activation Features.

Model	Processor Feature	POD Activation Feature
825	2473	1609
870	2486	1611 <sup>2</sup>
890	2497	1612 <sup>2</sup>
890	2498	1613 <sup>2</sup>

1. Additional operating system licensing is required if using an OS that is licensed by processor. Additional software licensing is required if using SW that is licensed by processor
2. FC 9603 is used to activate a processor for Linux use -- Enterprise Package (no charge)

- The POD Activation Code will be mailed to you and also posted at this web site:  
<http://www.ibm.com/servers/eserver/series/hardware/ondemand>



## Three phases of Capacity Upgrade on Demand Temporary Capacity

### **Enablement -- server is "enabled" for temporary capacity**

- Sales Channel registers to sell temporary capacity
- Customer signs a contract with IBM
- Sales Channel places an order for a TCOB Enablement Feature
- Customer enters a TCOB Enablement Code

### **Use -- temporary capacity is requested**

- Customer requests temporary capacity via server screen (specify units)
- Customer electronically reports temporary capacity activity

### **Billing -- temporary capacity is monitored, billed, and paid for**

- IBM consolidates reported information
- IBM notifies the channel about customer activity related to temporary capacity
- Sales Channel places an "after-the-fact" configurator order for TCOB Billing Features
- Sales Channel bills the customer

# Capacity Upgrade on Demand Temporary Capacity

**Step1: Order a TCOD Enablement Feature to enable your server for temporary capacity.**

IBM will fulfill your order by generating a TCOD Enablement Code (key), mailed to you and posted at <http://www.ibm.com/servers/eserver/series/hardware/ondemand>

**Step2: Use DST/SST screens on the server to request temporary capacity and assign the temporarily activated processors to an LPAR partition for use**

**Step3: Pay your quarterly bill for requested temporary capacity. You will be charged for one TCOD Billing Feature for each Processor Day of capacity that you requested**

Model	Processor Feature	Options Package	TCOD Enablement Feature	TCOD Billing Feature
825	2473	7416 (standard)	1773	1782
		7418 (enterprise)	1773	1783
870	2486	7419 (standard)	1776	1785
		7421 (enterprise)	1776	1786
890	2497	7422 (standard)	1777	1788
		7424 (enterprise)	1777	1789
890	2498	7425 (standard)	1778	1791
		7427 (enterprise)	1778	1792

\* TCOD Enablement Features are no charge MES features

\* US Prices represent IBM's list price for a TCOD Billing Feature (one Processor Day of temporary capacity)

\* Additional operating system licensing may be required if using an OS that is licensed by processor (NOT required for OS/400)

\* Additional software licensing may be required if using SW that is licensed by processor

## New I/O

- **New PCI-X Technology, speed/performance**
- **V5R2 Required**
- **Use with 800, 820, 830, 840, 810, 825, 870, 890, 270**

Feature	Description
5094 PCI-X I/O Tower (5294 = Two in a rack)	Supports 45 disk units, 14 <b>PCI-X</b> slots, 2 removable media
5095 PCI-X I/O MiniTower (0595 Rack mount version)	Supports 12 disk units, 7 <b>PCI-X</b> slots
5088 I/O Expansion Unit (0588 Rack mount version)	14 <b>PCI-X</b> card slots
New 15k rpm Disk drives (4326 and 4327)	35 GB and 70 GB <b>Doubles 890 disk capacity to 144 TB</b> requires new I/O towers or 800/810/825/870/890 CEC
2844 I/O Processor	Higher performance IOP
2757 PCI-X Ultra RAID Disk Controller	<b>High performance, large cache</b> RAID disk adapter
2782 PCI-X RAID I/O Adapter	Low cost RAID disk adapter (800, 810, 825, 5095 only)
5702 PCI-X Ultra Tape Controller 5705 PCI-X Tape/DASD Controller	attach 1 or 2 external Tape drives attach 6 disk ( Non RAID) and/or 1 tape drive (800/810 only)
4531/4631 DVD-ROM	<b>DVD-ROM</b> - media compatible with DVD-RAM output (not available in 270, 820, 830, 840 CEC boxes)

Other HW enhancements:

- Increased number of IXA and IXS units supported

Note: 5094 or 5088 requires Model 8xx

## High Performance I/O Options for 2003

- New PCI-X technology for use with iSeries
  - ▶ Requires V5R2

### I/O Towers

5094 PCI-X I/O Tower	Supports 45 disk units, 14 PCI-X slots, 2 removable media (except i270)
5095 /0595 PCI-X I/O MiniTower	Supports 12 disk units, 7 PCI-X slots
5088 / 0588 I/O Expansion Unit	14 PCI-X card slots (except i270)

### I/O Processor and Adapters

2844 I/O Processor	High performance 500 MHz PowerPC and 256K L2 cache
2757 PCI-X Ultra RAID Disk Controller	High performance, large cache RAID disk adapter
2782 PCI-X RAID I/O Adapter	Entry, low cost RAID5 adapter (iSeries 800, i810, i825, and 5095/0595 tower only)
5702 PCI-X Ultra Tape Controller 5705 PCI-X Tape/DASD Controller	attach 1 or 2 external Tape drives attach 6 disk (Non RAID5) and/or 1-2 tape/optical internal devices (iSeries 800, i810 only)

### Internal Disk Drives

4326 and 4327 15k rpm disks	Requires new PCI-X I/O towers or can be installed on base system for iSeries 800, i810, i825, i870 and i890
-----------------------------	-------------------------------------------------------------------------------------------------------------

## High Performance RAID Controller Comparisons

<b>Feature</b>	<b>2778 / 4778</b>	<b>2757</b>	<b>Improvements</b>
SCSI bus	80 MB/s	160 MB/s*	2x faster
# SCSI buses	3	4	1.25x more
Max PCI Burst Rate	133 MB/s	532 MB/s	4x more
Processor Speed	80 MHz	500 MHz	6.25x faster
Compressed Write Cache	104 MB	757 MB	7x larger
Min/Max drives in RAID5 array	4 / 10 disks	3 / 18 disks	Optimized
SCSI bus tagged command queuing	N/A	Yes	Faster Response Time (under heavy I/O load)
Array parity checking and memory scrubbing	Yes	Yes - New HDW assist	5x faster
RAID Configuration	Enable or Disable	Capacity, Performance, Balance or disable	Greater Flexibility

\*NOTE: Shipped today with Ultra3 (160 mb/s) support.

## PCI RAID5 Adapter for Internal Storage

Disk Unit Adapter (IOA)	Write-Cache Base / Compressed	Hardware Disk compression	Min/Max # of drives in a RAID set
2763	10 MB	No	4/10
2782 <sup>(1)</sup>	40 MB	No	3/12
2748 /4748	26 MB	Yes <sup>(2)</sup>	4/10
2778 /4778	26 MB / 104 MB	Yes <sup>(2)</sup>	4/10
2757	235 MB / 757 MB	No	3/18

**NOTES:**

1. Available on Model 800, 810, 825, 870, 890 and 0595/5095 PCI-X I/O Towers only (Also available on Model 270 and 820 as well as #5075 I/O tower - with V5R2)
2. Hardware Disk compression is not supported on 70GB or larger 15K RPM internal drives

New V5R2  
Adapters



## New Ultra\* SCSI Disk Adapters



- #2757 High Performance RAID5 Adapter
  - ▶ 235 MB write cache, up to 757MB with compression
  - ▶ RAID5 optimized, minimum 3 drives in array
  - ▶ 4 Ultra SCSI buses
  - ▶ Supports up to 18 disk units and two internal optical / tape devices
- #2782 Entry RAID5 Adapter
  - ▶ 40 MB write cache
  - ▶ RAID5 optimized, minimum 3 drives per array
  - ▶ Two Ultra SCSI buses
  - ▶ Supports up to 12 disk units and two internal optical / tape devices
- #5705 Tape/Disk Adapter
  - ▶ Non-RAID-5
  - ▶ Internal Ultra SCSI bus
    - Supports up to 6 Disk Units and internal optical / tape device
  - ▶ External Ultra SCSI bus
    - Optional tape devices capable of attaching to LVD SCSI

\*NOTE: Shipped today with Ultra3 (160 mb/s) support.

# New PCI-X I/O Towers

## 2002

### 5075

\$6,000  
6 disk slots  
7 PCI slots

### 5074

\$26,000  
up to 45 disk slots  
14 PCI slots  
FC 5079 = 2 x 5074 in rack

### 5078

\$12,000  
14 PCI slots  
FC 0578 in rack



## 2003

### 5095

\$x,xxx  
12 disk slots  
7 PCI-X slots  
0595 rack mount



### 5094

\$26,900  
up to 45 disk slots  
14 PCI-X slots  
FC 5294 = 2 x 5094 in rack



### 5088

\$12,000  
14 PCI-X slots  
FC 0588 in rack

## iSeries I/O Tower and Rack Mount Offerings

- New I/O towers and Rack Offerings
  - ▶ 5094 PCI-X I/O Tower (45 disk slots)
    - 5294 1.8M Rack (90 disk slots)
      - Equivalent to 2 x 5094
  - ▶ 5095 PCI-X I/O Tower (12 disk slots)
    - 0595 Rack mounted 5095
  - ▶ 5088 PCI-X Expansion Unit
    - 0588 Rack mounted 5088
- Customer installed rack mount offerings
  - ▶ iSeries 800, i810 and i825 system units
    - System Unit Expansion (side car)
  - ▶ 0588, 0595 PCI I/O towers

5095 / 0595  
I/O Tower



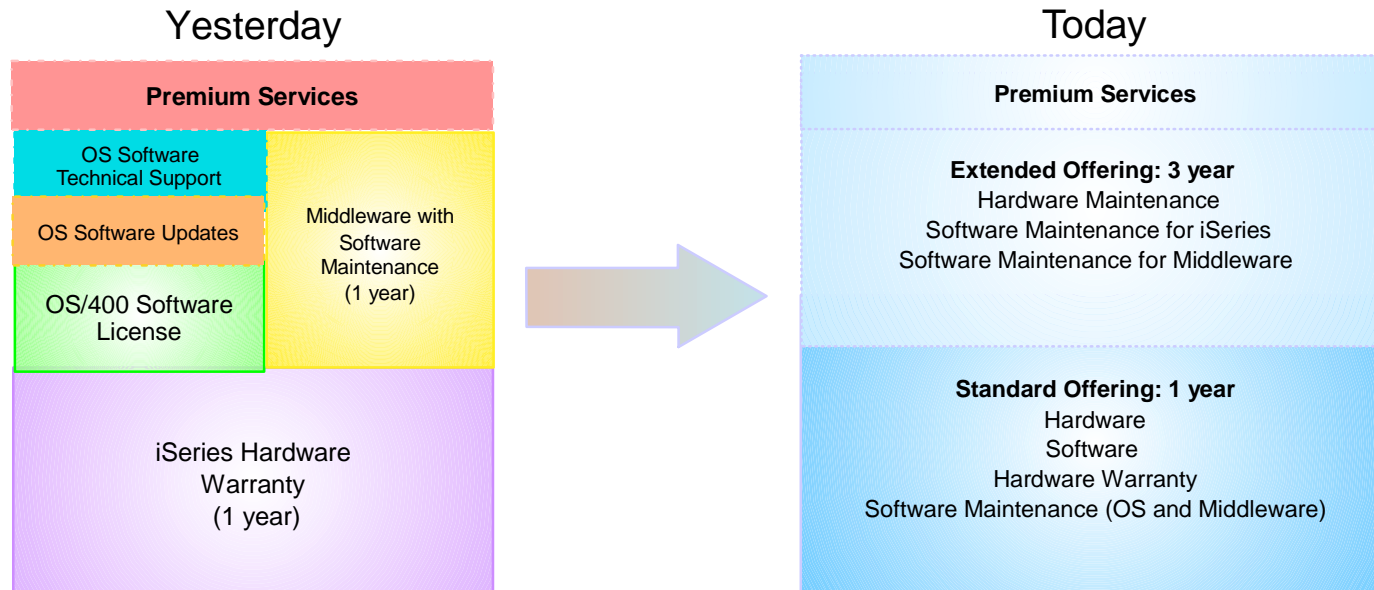
Rack Offerings



5094 I/O Tower



# Software Maintenance for iSeries



- 01/28/2003 Announce and Availability with eConfig support
- All new iSeries server purchases include 1 year Software Maintenance (SW MA)
  - ▶ 3 year option available (pay 2-year delta)
- SW MA consists of upgrade entitlement (Software Subscription) and remote technical support (key component of Support Line)
- 1 & 3 year prepay SW MA renewal options available
- Existing SW Subscription & Support Line replaced by SW MA
- Components of SW MA will not be sold separately
- Price of the SW MA comparable to the combination of the current offerings

Closing

# Thank You For using.. The Configurator



Jay Obey - IBM Rochester  
[jpobey@us.ibm.com](mailto:jpobey@us.ibm.com)





# Trademarks and Disclaimers

© Copyright International Business Machines Corporation 2001

References in this document to IBM products or services do not imply that IBM intends to make them available in every country.

The following terms are trademarks or registered trademarks of International Business Machines Corporation in the United States, other countries, or both:

AS/400	IBM Logo
AS/400e	iSeries
e-business logo	OS/400
IBM	

Lotus, Freelance, and Word Pro are trademarks of Lotus Development Corporation in the United States, other countries, or both.

Tivoli and NetView are trademarks of Tivoli Systems Inc. in the United States, other countries, or both.

C-bus is a trademark of Corollary, Inc. in the United States, other countries, or both.

Java and all Java-based trademarks and logos are trademarks or registered trademarks of Sun Microsystems, Inc. in the United States, other countries, or both.

Microsoft, Windows, Windows NT, and the Windows logo are trademarks of Microsoft Corporation in the United States, other countries, or both.

PC Direct is a trademark of Ziff Communications Company in the United States, other countries, or both and is used by IBM Corporation under license.

ActionMedia, LANDesk, MMX, Pentium and ProShare are trademarks of Intel Corporation in the United States, other countries, or both.

UNIX is a registered trademark of The Open Group in the United States and other countries.

SET and the SET Logo are trademarks owned by SET Secure Electronic Transaction LLC.

Other company, product and service names may be trademarks or service marks of others.

Information is provided "AS IS" without warranty of any kind.

All customer examples described are presented as illustrations of how those customers have used IBM products and the results they may have achieved. Actual environmental costs and performance characteristics may vary by customer.

Information in this presentation concerning non-IBM products was obtained from a supplier of these products, published announcement material, or other publicly available sources and does not constitute an endorsement of such products by IBM. Sources for non-IBM list prices and performance numbers are taken from publicly available information, including vendor announcements and vendor worldwide homepages. IBM has not tested these products and cannot confirm the accuracy of performance, capability, or any other claims related to non-IBM products. Questions on the capability of non-IBM products should be addressed to the supplier of those products.

All statements regarding IBM future direction and intent are subject to change or withdrawal without notice, and represent goals and objectives only. Contact your local IBM office or IBM authorized reseller for the full text of the specific Statement of Direction.

Some information in this presentation addresses anticipated future capabilities. Such information is not intended as a definitive statement of a commitment to specific levels of performance, function or delivery schedules with respect to any future products. Such commitments are only made in IBM product announcements. The information is presented here to communicate IBM's current investment and development activities as a good faith effort to help with our customers' future planning.

Performance is based on measurements and projections using standard IBM benchmarks in a controlled environment. The actual throughput or performance that any user will experience will vary depending upon considerations such as the amount of multiprogramming in the user's job stream, the I/O configuration, the storage configuration, and the workload processed. Therefore, no assurance can be given that an individual user will achieve throughput or performance improvements equivalent to the ratios stated here.

Photographs shown are of engineering prototypes. Changes may be incorporated in production models.