



iSeries WebSphere

IBM server™ & TotalStorage™  
UNIVERSITY 2003

## Sizing WebSphere Workload on iSeries Servers

## Session Objectives

- Learn how Workload Estimator supports WebSphere workload
- Learn how to answer the WebSphere workload questions
- Demonstrate and review case studies for sizing WebSphere workloads
- Cover the available WebSphere sales and technical resources

## Workload Estimator for iSeries

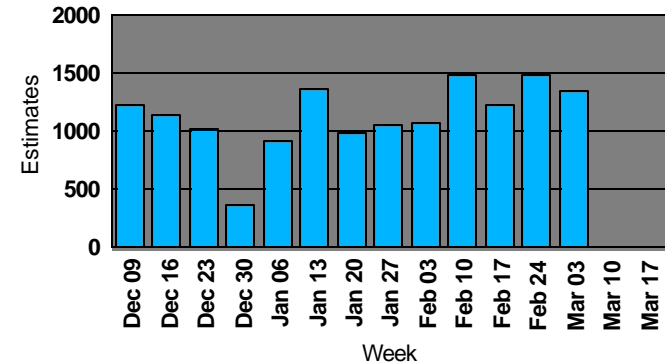
- **Why use WLE?**
  - ▶ **Current application growth**
  - ▶ **Emerging application sizing**
  
- **How do I use WLE?**
  - ▶ **Internet:<http://www-912.ibm.com/servlet/EstimatorServlet>**
  - ▶ **Techline provides WebSphere sizing assistance**
  
- **Who can use the WLE?**
  - ▶ **Customers**
  - ▶ **Business Partners**
  - ▶ **IBMers**



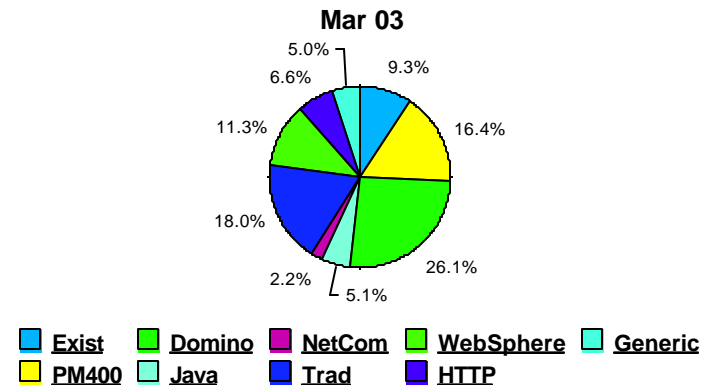
# The workloads supported by WLE

- **The Supported workloads**
  - ▶ **Exists**
  - ▶ **Traditional**
  - ▶ **Generic**
  - ▶ **PM/400**
  - ▶ **Domino**
  - ▶ **WebSphere Workload V5**
  - ▶ **Web Serving Workload (HTTP)**
  - ▶ **WebSphere Commerce Workload**
  - ▶ **Java™ Workload**
  - ▶ **WebFacing Workload**
  - ▶ **WebSphere Portal Server**
  - ▶ **File Serving Workload (Linux)**

### Estimates Over Time



### Percent Workload Usage Breakdown



# Getting Started... (new version available Jan. 28, 03)

[www.ibm.com/eserver/iseries/support/estimator](http://www.ibm.com/eserver/iseries/support/estimator)

New  
Name

Version: 2003.1 beta.1  
15-Jan-03  
page 12

## IBM eServer Workload Estimator

The IBM eServer Workload Estimator (Workload Estimator) and related materials are provided by International Business Machines Corporation (IBM) as a service to you and may be used for informational purposes only. Use of the Workload Estimator is restricted to the purpose of helping you predict a possible iSeries model processor, interactive feature, memory and DASD for a given workload. All representations of throughput, response time, memory, DASD, and other performance data in the Workload Estimator are estimates and averages based on certain assumptions and conditions. No representation is made that these throughputs and their corresponding response times or other performance data will be accurate or achieved in any given iSeries installation environment. They are based on specific configurations and run time environments. Customer results will vary. Any configuration recommended by the Workload Estimator should be tested and verified. By accepting this information or using the Workload Estimator

## Always check this!

- **Enhancements to the workloads supported, and new workloads is ongoing.**

## IBM eServer Workload Estimator

### What's New!

We are providing a new version of the IBM eServer Workload Estimator 3 to 4 times a year. In the **2003.1** version (released Jan 2003), we have responded to your requests for various improvements, including the following new improvements and features:

#### Contents

[Support for the new iSeries Systems](#)

[WebSphere Application Server V5 for iSeries](#)

[WebSphere Application Server - Express V5 for iSeries](#)

[WebSphere Portal Server](#)

[WebFacing](#)

[Linux workloads for web serving and file serving](#)

[HTTP workload becomes the Web Serving workload](#)

[Web Commerce workload becomes the WebSphere Commerce workload](#)

[New Name for this Tool](#)

- **Support for the new iSeries Systems** - The Estimator has been updated to include the new iSeries systems that were recently announced. With this version of the Estimator, the new 800, i810, i825, i870 and new i890 models will be the systems that will by default be considered during the recommendation phase of the Estimator. The previous systems are still available by changing your options.
- **WebSphere Application Server V5 for iSeries** - The Estimator has been updated to support Version 5.0.0 page 6

# Navigation

✦ Save/Restore a

Workload

✦ Save as PDF

✦ Print Recommendation

✦ Help

PM data used to build WLE  
workload profile  
LPAR Options: No, partial, full  
proc

- **File**
  - ▶ Add Workload
  - ▶ Restore
  - ▶ Save all
  - ▶ Print
  - ▶ PDF
- **Edit**
  - ▶ Refresh
  - ▶ Reset
  - ▶ Estimation Identification
  - ▶ Options
- **Navigation**
  - ▶ Workload Selection
  - ▶ Selected System
- **Contact IBM**
- **Tutorials**
  - ▶ Basic Walk-through
  - ▶ Detailed Walk-through
  - ▶ Save and Reuse
  - ▶ Consolidation
  - ▶ PM eServer iSeries
  - ▶ Logical Partitioning
- **HELP**
  - ▶ Detail descriptions of all the workloads



# Options

## IBM@server Workload Estimator

Version: 2003.1 beta.1  
15-Jan-03  
pppe12

### User Options

User Options

You have never viewed the options for the Workload Estimator. Please thoroughly review the default options so that estimates can be made more accurately.

### Series Specific Settings

To review and update your iSeries options, click here: [Go to iSeries](#)



Select for iSeries

### Operational Settings

1. What [series type](#) would you like to set as default?

- Cancel
- Load Standard Options
- Load My Options
- Save My Options
- Use This Time



# IBM Workload Estimator for iSeries

an IBM @server

## Options

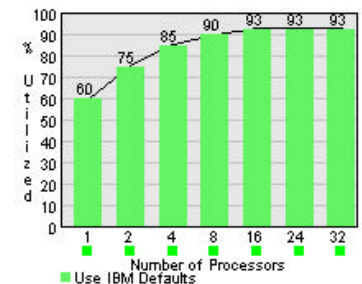
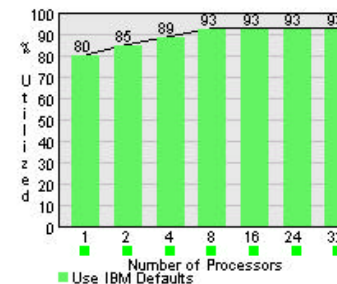
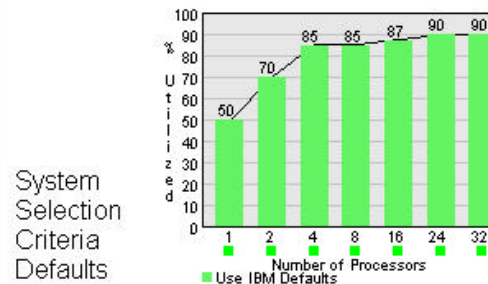
Base OS Version Selection: OS400 - V5R1

Calculation Defaults DBCS Support: No

RAID Support: RAID5

Note: Drag and Drop the top of each green bar to adjust the values. (See [Tutorial](#))

[Target Processor Utilization:](#) [Target Interactive Feature Utilization:](#) [Target LPAR Processor Utilization:](#)



Disk Storage Percent Full: 0% 100% 85.0%

Disk Storage Type: IBM Default (10K RPM)

Select which Family to target the sizing against: IBM Default (250,270,8xx)

System Size Adjustments Use the **GENERIC WORKLOAD** to make any adjustments to the number of diskarms, or the amount of disk storage of the selected system

Buttons: Cancel, Load Standard Options, Load My Options, Save My Options, Use This Time

## Options

★ Set assumptions

- ◆ Gather from customer

★ Options effect the size of the projected workload

- ◆ Processor Utilization
- ◆ Disk Storage
- ◆ Family of servers

★ Recommendation is the minimum system for adequate performance

★ The Estimator is not a configuration

# Selecting Workload(s) and LPAR

IBM Workload Estimator for iSeries  
an IBM e server

Version: 2002.3.fix.1  
21-Nov-02  
www-912

## Workload Selection

Type of Workload	Name of Workload
Workload Type ▼	Workload #1
Workload Type ▼	Workload #2
Workload Type ▼	Workload #3

Use the pull downs to select your workloads. Then press **Next** →

**Allow Another Workload**

LPAR Status: No LPAR ▼

Options: OS400 - V5R2, RAID Support = RAID-5, DBC

Developed by the Rochester iSeries System Performance Team

[About IBM](#) | 
 [Privacy](#) | 
 [Legal](#) | 
 [Contact](#)

# Selecting Workload(s) - the new look

IBM Workload Estimator

Home | Products & services | Support & downloads | My account

IBM @server Workload Estimator

Version: 2003.1  
24-Jan-03  
pippen2

## Basic Workload Selection

Add Workloads to This Solution: [\(help\)](#) **Expert View**

Solution: [MySolution](#) [Add Workload](#)

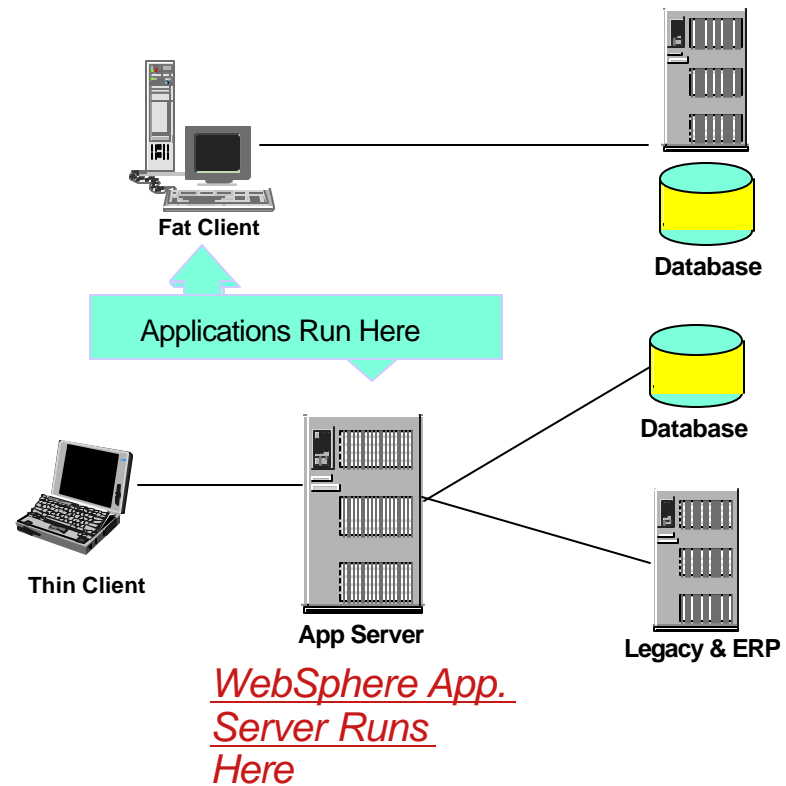
Add:

- [Domino Workload](#)
- [Existing Workload](#)
- [File Serving \(Linux\) Workload](#)
- [Generic Workload](#)
- [Java Workload](#)
- [Traditional Workload](#)
- [Web Serving Workload](#)
- [Web Serving \(Linux\) Workload](#)
- [WebFacing Workload](#)
- [WebSphere Workload](#)
- [WebSphere Commerce Workload](#)
- [WebSphere Portal Server Workload](#)

**Next**

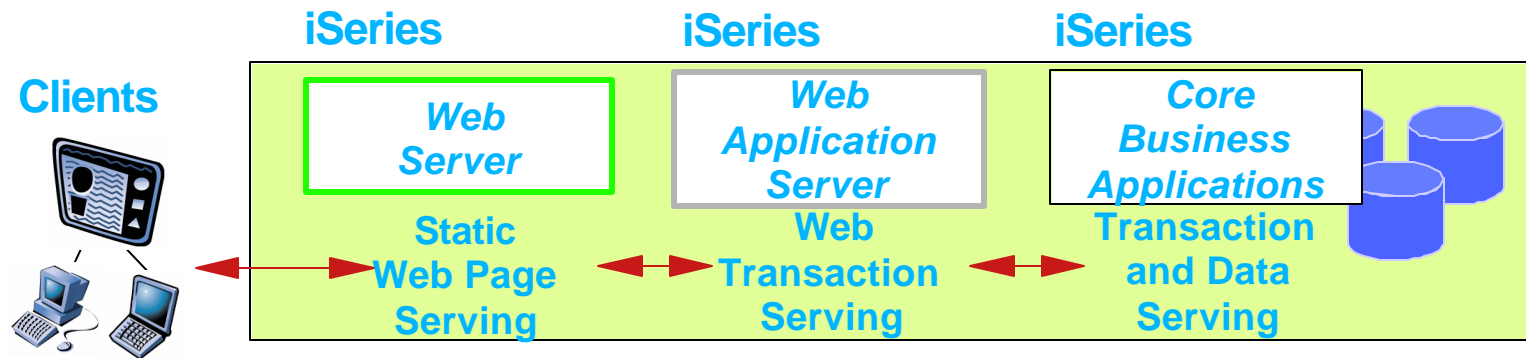
# The WebSphere Application Server

- **Host Centric**
  - ▶ Basic text on terminal
  - ▶ Host system does all the work
- **Fat Client**
  - ▶ Application code on client
  - ▶ Update client code
  - ▶ Multiple Versions
  - ▶ Connects to DB Server
- **Application Server**
  - ▶ User management
  - ▶ Connection management
  - ▶ Database and system resources
  - ▶ Integration to back-end systems
  - ▶ Application code on Server
  - ▶ WAS run Java code



## The Web Workloads supported by WLE

- **The Supported WebSphere workloads**
  - ▶ **WebSphere Workload**
    - **WAS Workload**
  - ▶ **HTTP Workload**
    - **Web Serving**
- ▶ **Web Commerce Workload**
- ▶ **Java Workload**
- ▶ **WebFacing Workload**
- ▶ **Portal Workload**



## Scenario #1 - Insurance Company

- **Current Environment**
  - ▶ **The Claims application is a 5250 "green screen" RPG application**
    - **Claims application is "home grown"**
    - **50 Adjusters use this application**
    - **They typically add 400 claims per hour**
    - **Runs today on a 170-2183 512MB RAM**
  
- **Opportunity**
  - **Modernize by web enabling the legacy claims application**
  - **Future: Customers can file the claim on the Web**
  
- **What to propose?**
  - **WebFacing solution to their 5250 application**
  - **Web browser access to Claims application (internet/intranet)**

## Scenario #1 - Insurance Company - Review

- **What do I need to size the application?**
  - ▶ **Number of transactions per hour**
  - ▶ **Number of users**
  - ▶ **Average number of fields per screen**
  - ▶ **Number of unique screens**
  - ▶ **Will the new system continue to handle the "old" workload**

## Scenario #1 - Insurance Company - Review

- **What do I need to size the application?**
  - ▶ **Number of transactions (cliams) per hour**
    - 400 transactions per hour
  - ▶ **Number of users**
    - 50 users - Not needed
  - ▶ **Average number of fields per screen**
    - # of fields per screen - 100 is the default
  - ▶ **Number of unique screens**
    - DDS record formats
  - ▶ **Will the new system continue to handle the "old" workload**
    - Would WAS run on a separate server or the same system?



# WebFacing Workload Screen - Workload Definition

## WebFacing #1

WebFacing Workload Definition

1. How many [transactions per hour](#) do you anticipate during the busiest hour of the day (one 5250 screen is a transaction)?
2. For a typical user of your application, what is the average number of [fields per 5250 screen](#) ? Refer to the help text for specific advice.  100.0
3. How many [unique 5250 screens](#) will be served through WebFacing?
4. So far, you have described the WebFacing processing for the 5250 screens. Would you also like to represent the [5250 application](#) in this estimation?  
 Yes  
 No
5. [DBCS Support](#) for this workload:  ▾
6. [RAID Support](#) for this workload:  ▾



# Existing WebFaced Workload Definition

## Web-Faced Existing #1

Existing System Workload Definition

**Please note:** The information requested for an Existing System is information about the workload on an **existing** iSeries or AS/400e that you would like to have added to a new iSeries.

	Model	Interactive Feature	Processor Feature Code	Processor CPW	Interactive CPW
1. <a href="#">Processor Model</a>	170-2183	N/A	2183	319	65
2. <a href="#">Total CPU Utilization</a>	50				
3. <a href="#">Interactive Utilization</a>	50				
4. <a href="#">Processors Activated</a> (For Processor on Demand models only)	1				
5. <a href="#">Memory (MB)</a>	512				
6. <a href="#">Disk Arms Distribution:</a>		Unprotected	Mirrored	RAID-5	
	7,200 RPM:	0.00	0.00	4.00	
	10K RPM:	0.00	0.00	0.00	
		Unprotected	Mirrored	RAID-5	
	7,200 RPM:	0.00	0.00	32.00	
	10K RPM:	0.00	0.00	0.00	
7. <a href="#">Storage Used (GB):</a>					
8. <a href="#">Additional Characteristics:</a>	None				
9. Will this workload be changed to use <a href="#">WebFacing Support</a> ?	Yes				

## Selected System Screen

### Selected System

Choose Base System

An existing system has been chosen as one of the workloads. Please make a selection below.

If you chose one of the existing systems, then after all the processing requirements of the various workloads have been calculated, the system selection algorithms will attempt to give preference to the selected system or a system on its upgrade path.

	Workload Name	Model	Type	Feature	Hardware Feature
<input type="button" value="Select"/> *	Web-Faced Existing #1	170	2183		2183

Do not limit selection based on [upgrade path information](#) from any existing system. Size to any possible system.

\* -- These systems do not have any systems in their upgrade path. Please choose another system, or choose to not limit the selection to an upgrade path.

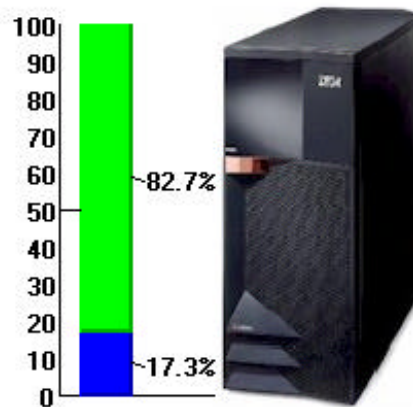


# System Recommendation

## Immediate Solution

## Growth Solution

■ Available  
■ WebFacing #1



[Growth Trends](#) can be changed [here](#).



The 800-2464/7408 can handle the defined workloads **NOW**.

It can also handle the specified growth.

<a href="#">Model/Feature:</a>	800-2464/7408 950/50
<a href="#">Processor CPW:</a>	950
<a href="#">Interactive CPW:</a>	50 (0% utilized)
<a href="#">CIW Rating:</a>	350
<a href="#">Database Capacity:</a>	N/A
<a href="#">N-Way:</a>	Uni
<a href="#">CPU Utilization:</a>	17.3 %
<a href="#">Software Pricing Tier:</a>	P10
<a href="#">Memory (MB):</a>	926 of 8,192
<a href="#">Disk Drives (arms):</a>	6 of 63
<a href="#">Capacity (GB):</a>	40 of 4,445
<a href="#">LPAR-able:</a>	Shared

<a href="#">Model/Feature:</a>	800-2464/7408 950/50
<a href="#">Processor CPW:</a>	950
<a href="#">Interactive CPW:</a>	50 (0% utilized)
<a href="#">CIW Rating:</a>	350
<a href="#">Database Capacity:</a>	N/A
<a href="#">N-Way:</a>	Uni
<a href="#">CPU Utilization:</a>	26.0 %
<a href="#">Software Pricing Tier:</a>	P10
<a href="#">Memory (MB):</a>	1,355 of 8,192
<a href="#">Disk Drives (arms):</a>	9 of 63
<a href="#">Capacity (GB):</a>	58 of 4,445
<a href="#">LPAR-able:</a>	Shared

## Scenario #2 - Manufacturing Company

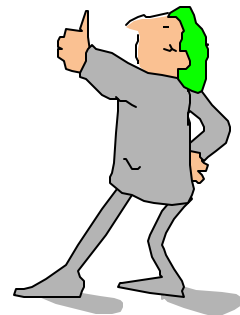
- **Current Environment**
  - ▶ **Customer wrote a Java application using WebSphere Application Server running on 8-Way NT Server. The customer is not happy with the NT because of management challenges and wants to select a more stable platform. Customer already has an iSeries system running LOB application.**
  
- **Opportunity**
  - **Migrate the WebSphere application from NT to iSeries**
  
- **What to propose?**
  - **Propose a new iSeries and LPAR**
  - **CUoD models - 825 and higher**

## Answering sizing questions.... WebSphere Workload

- **Version of WAS? 4.0, Express, 5.0 and Network Deployment**
- **Which best describe the plans for web serving?**
  - ▶ **Serving web pages, Web-enabling legacy apps., Web appl w/DB access**
- **Describe a web site visit ?**
  - ▶ **Display a screen, process order, mouse click, etc.**
- **How many visits per hour at peak times?**
- **How many concurrent users?**
- **How many of the following will be accessed per web site visit? Are any complex doing calculations, etc. or more basic queries?**
  - ▶ **Static web pages - Basic Webpage**      - **Dynamic pages or JSPs**
  - ▶ **Servlets - Runs on the server**                      - **EJBs - Usually one EJB/entity**
- **How large are the web pages being served?**
  - ▶ **Average number of files/page**
  - ▶ **Average size of file served**

## Planning questions for Sizing WebSphere workload...

- Is the solution a tiered approach? How many tiers?
- Using SSL (Secure Sockets Layer)?
- What percentage of processor will be utilized by WAS?
- What type of transactions will be built in the application business logic?
  - ▶ Query with pre-build SQL, Lightweight Transactions, Medium Transactions and Complex Transactions
- How much disk storage is required for image files and sound files? (MB)
- Database utilization by servlets or EJB Session Beans? low, med, or high
- Describe back-end interaction that occurs during each web transaction
  - ▶ Read-only data - small (100 bytes), medium (1K), large (10+K)
  - ▶ Update data- small (5 columns), large (500 columns)
  - ▶ OLTP - size of COMM AREA - small (100 bytes), medium (1K)



## Scenario #2 - Manufacturing Company - Review

- **What do I need to size the application?**
  - ▶ **Transactions**
    - Number of transactions
    - Number of JSPs
    - Number of Servlets
    - Number of static Web Pages
  - ▶ **EJB**
    - Entity EJB
    - Session EJB
  - ▶ **Complexity**
    - Database
    - EJBs
  - ▶ **DBCS and RAID**



# WebSphere Workload Screen #1 - Workload Definition

## WebSphere #1

WebSphere Workload Definition

1. Which [WebSphere Version](#) will be used?  v4.0  v5.0
2. Will [WebSphere Express](#) be used?  ▼
3. How many [visits per hour](#) do you anticipate during the **busiest** hour of the day?
4. A visit is a group of transactions from a given user. In a typical visit, how many of the following operations will occur:
  - a. [Static web pages and files](#) served:
  - b. [Java Server Pages \(JSPs\)](#) served:
  - c. [Java Servlets](#) executed:
  - d. [EJB Session Beans](#) accessed:
  - e. [EJB Entity Beans](#) accessed:
5. [DBCS support](#) for this workload:  ▼
6. [RAID support](#) for this workload:  ▼



# WebSphere Workload Questions... Screen #1 Notes

- **Java Server Pages Served**
  - ▶ Average number of JSPs used during a visit
- **Servlets**
  - ▶ Average number of servlets used during a visit
- **EJB Session Beans**
  - ▶ Average number of session beans used during a visit
  - ▶ Used in enterprise application to represent the logic in a transaction
- **EJB Entity Beans**
  - ▶ Average number of entity beans used during a visit
  - ▶ Used or accessing data in a database
  - ★ Entity beans can also be used to access data in legacy applications. In this case, you should size your legacy application separately (using, for example, the Traditional workload).
- **DBCS (Double Byte Character Set)**
  - Guidelines for DBCS provided by (and currently used by) Japanese Sales and Business Partners.
- **RAID**
  - The RAID-5 setting is usually the optimal solution.

## WebSphere Workload Screen #2 - ExpertWorkload

### WebSphere #1

ExpertWorkload Definition

1. Rate the [complexity of the Java Server Pages \(JSPs\)](#) used during a typical visit:
2. Rate the [complexity of the Java Servlets](#) used during a typical visit:
3. What is the [database utilization of the servlets](#)?
4. Do servlets typically use [servlet chaining](#)?

5. Rate the [complexity of the EJB Session Beans](#) used during a typical visit:
6. What is the [database utilization of the EJB Session Beans](#)?
7. Do your EJBs use [Pass-By-Reference](#)?

If EJB is needed, then questions 5, 6, and 7 are displayed.

# WebSphere Workload Questions... Screen #2 Notes

- **JSP Complexity**
  - ▶ Simple - JSP for formatting data from other sources
  - ▶ Moderate - some computation (in-line code or Java Bean) and formatting data
  - ▶ Complex - JSP doing most of the work, this is rare
  - ★ Use Simple for JSP complexity for WebFacing
- **Servlet Complexity**
  - ▶ Simple - Does not perform session management, and does not use SSL
  - ▶ Moderate - Includes more computation or logic, does session management, may use SSL for a small percentage of transactions, & some data formatting
  - ▶ Complex - Does session management and a significant amount of computational work, and may use SSL for some transactions
  - ★ Use Moderate for servlet complexity for WebFacing
- ▶ **Database Utilization of Servlets (local database)**
  - ▶ None- Servlet with no Database work
  - ▶ Light - Light database access (1/3 or less is db code)
  - ▶ Average - approx. half of servlet time is spent accessing a database
  - ▶ Heavy - more that half of servlet is used for accessing a database (adding/deleting rows, or complex queries)
  - ★ Usually assume the database is being used at an Average usage

## WebSphere Workload Questions... Screen #2 Notes

- **Servlet Chaining (yes/no)**
  - ▶ Use of multiple Servlets or JSPs to processes a single HTTP request
  - ★ Usually assume NO, don't configure unless the developer knows it is used
- **Session Bean Complexity**
  - ▶ Simple - stateless with 5-6 bean operations during a call
  - ▶ Moderate - stateful bean with minimal processing, and may access entity beans
  - ▶ Complex- stateful bean with complex processing and may access entity beans
- **Session Bean Database Usage**
  - ▶ None - Session Bean has no database access
  - ▶ Light - Light database access, usually accessing existing data
  - ▶ Average - More complex queries
  - ▶ Heavy - Session Bean that resides in an application, and does not use entity beans for database operations
- **Pass-by-reference (yes/no)**
  - ▶ WebSphere includes a "Pass-By-Reference" option for EJB calls
  - ▶ Could improve performance, but test the application carefully
  - ★ Usually assume "no", not using Pass-By-Reference

Only use EJB when the application is developed by customer or ISV...

## Scenario #2- Workload Estimator Results...

- **The results...**
  - ▶ **iSeries model 810 2-way**
  - ▶ **2700 CPW**
  - ▶ **2G RAM**
  - ▶ **120GB Disk**
  - ▶ **Handles workloads NOW**
- **or**
  - ▶ **iSeries model 825 3-way**
  - ▶ **3600 CPW**
  - ▶ **3-4 GB**
  - ▶ **200 GB Disk**
  - ▶ **Has room for growth**
  - ▶ **supports CUoD**

# Scenario #2 Result

## Selected System

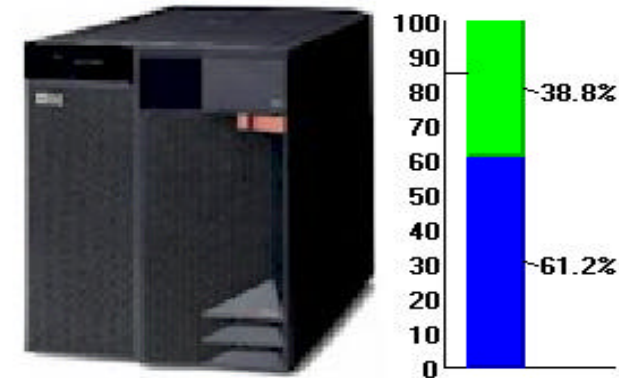
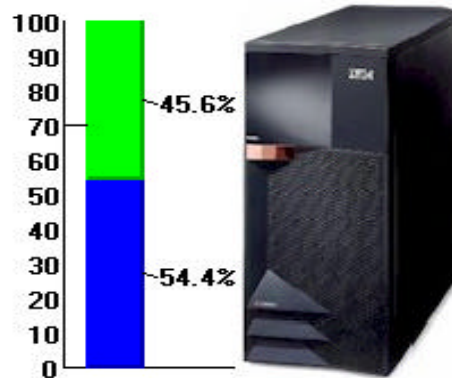
Consider Growth

### Immediate Solution

### Growth Solution

[Growth Trends](#) can be changed [here](#).

■ Available  
■ WebSphere #1



Model/Feature:	810-2469/7428 2700/0
Processor CPW:	2700
Interactive CPW:	0 (0% utilized)
CIW Rating:	975
Database Capacity:	N/A
N-Way:	2-way
CPU Utilization:	54.4 %
Software Pricing Tier:	P20
Memory (MB):	1,591 of 16,384
Disk Drives (arms):	7 of 198
Capacity (GB):	41 of 13,971
LPAR-able:	Shared

Model/Feature:	825-2473/7416 3600/0
Processor CPW:	3600 (for 3 processors)
Interactive CPW:	0 (0% utilized)
CIW Rating:	1570 (for 3 processors)
Database Capacity:	N/A
N-Way:	3-way
CPU Utilization:	61.2 %
Software Pricing Tier:	P30
Memory (MB):	2,354 of 16,384
Disk Drives (arms):	11 of 825
Capacity (GB):	58 of 58,216
LPAR-able:	Shared

## Scenario #3 - Florist

### ■ Current Environment

- ▶ **Typical Florist - Has a call Center - Order Entry Application**
  - 3rd party COBOL, 5250 application
  - 60 people who process Orders
  - AS/400 720 model 2062 (CPW 420), 30% utilized
  - 600 orders/hour

### ■ Opportunity

- ▶ **Become an on-line florist - sell items on the web**
- ▶ **Create new way for Order entry with web technologies**
- ▶ **Increase customer base**
- ▶ **Enhance advertising, promotions, personalization and target marketing**
- ▶ **Electronic communication with suppliers**





## Scenario #3 - Florist

- **Challenge**
  - ▶ **Use Web Technologies which will add new workload**
  - ▶ **Customer question, "purchase new system or upgrade?"**
  
- **What to propose?**
  - **WebSphere Commerce**
    - **Product Catalog**
    - **Customer Registration**
    - **Cross Selling**
  - **Rich function software**
  - **Electronic payment needed**
    - **WebSphere Payment Server**

## Commerce Workload Questions...

- **Visits per hour**
  - ▶ This is the primary measure of the amount of work being done with your application
  - ▶ A visit represents a unique shopper entering your storefront to browse and/or order during the busiest hour
- **Visit Complexity**
  - ▶ Simple, Moderate, or Complex
- **Embedded Static Files**
  - ▶ Images, thumbnail images, navigation buttons, advertisement banners, and text... small in size, but in aggregate can be significant
- **Database and Directory Size**
  - ▶ Predict how much total disk space is required that hold the catalog, orders, logs, and customer information
- **WebSphere Commerce Payments**
- **WebSphere Commerce Pro Entry Edition - 1-way Server**

## WebSphere Commerce Considerations

- **WebSphere Commerce Entry will only recommend 1-way iSeries systems**
- **Consider Firewall issues**
  - ▶ Contact Techline or ATS for architectural issues
  - ▶ Consider Linux for Firewall (portion of a processor)
- **Number of hits is important**
  - ▶ What is the percentage that purchase (10-50%) - varies by industry
  - ▶ People do not come back to a slow website
- **Consider Capacity Upgrade on-demand**
  - ▶ Workload comes from the Internet no in-house - Unpredictable
  - ▶ Plan for peak hours and seasons
- **Prevent one of the bottleneck of poor disk I/O rate**
  - ▶ Low degree of db activity, 6 disk arms allocated for commerce db
  - ▶ Medium degree of db activity, 12 disk arms allocated for commerce db
  - ▶ High degree of db activity, 18 disk arms allocated for commerce db

# Commerce Workload Screen - Workload Definition

## WebSphere Commerce #1

### WebSphere Commerce Workload Definition

1. How many [total visits per hour](#) do you anticipate for WebSphere Commerce during the **busiest** hour of the day? *(To do a standalone sizing for WebSphere Commerce Payments, enter 0 (zero) here and then skip down to question #4)*
2. How would you characterize the [complexity of the visits](#)?
3. For an average WebSphere Commerce user transaction, how many [embedded static files](#) (gifs, images, buttons, banners, etc.) are there?
4. Will [WebSphere Commerce Payments](#) be used to process payment transactions?
5. What is the total size of the [database and directories](#) that will hold inventory, orders, logs, and customer information (GB) ?  GB
6. Will [WebSphere Commerce Professional Entry Edition](#) be used?
7. [DBCS support](#) for this workload:
8. [RAID support](#) for this workload:



## Scenario #3 - Florist

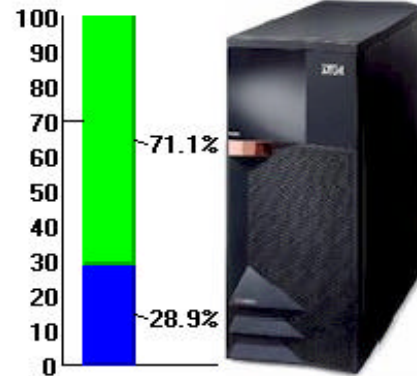
- **Input Data into WLE for new system**
  - ▶ **1500 hits / hour**
  - ▶ **Plan for 3x growth**
  - ▶ **Moderate Complexity**
  - ▶ **10 GB for a database**
  - ▶ **Use Payment Server**
  
- **Recommended Result**
  - ▶ **iSeries 810 with 2700 CPW**
  - ▶ **4-6 GB of RAM**
  - ▶ **10 Arms - Commerce is sensitive to the number of disk arms**
  - ▶ **Always consider models with CUod for WebSphere Commerce**

# Scenario #3 Result

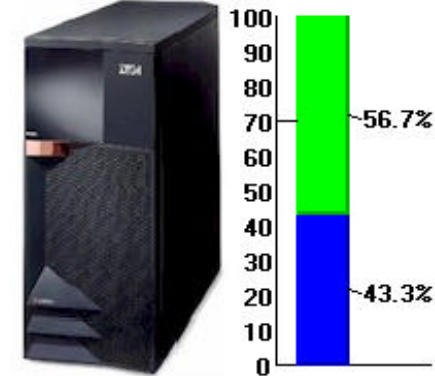
## Immediate Solution

## Growth Solution

■ Available  
■ WebSphere Commerce #1



[Growth Trends](#) can be changed [here](#).



The 810-2469/7428 can handle the defined workloads **NOW**.

It can also handle the specified growth.

<u>Model/Feature:</u>	810-2469/7428 2700/0
<u>Processor CPW:</u>	2700
<u>Interactive CPW:</u>	0 (0% utilized)
<u>CIW Rating:</u>	975
<u>Database Capacity:</u>	N/A
<u>N-Way:</u>	2-way
<u>CPU Utilization:</u>	28.9 %
<u>Software Pricing Tier:</u>	P20
<u>Memory (MB):</u>	4,398 of 16,384
<u>Disk Drives (arms):</u>	5 of 198
<u>Capacity (GB):</u>	35 of 13,971
<u>LPAR-able:</u>	Shared

<u>Model/Feature:</u>	810-2469/7428 2700/0
<u>Processor CPW:</u>	2700
<u>Interactive CPW:</u>	0 (0% utilized)
<u>CIW Rating:</u>	975
<u>Database Capacity:</u>	N/A
<u>N-Way:</u>	2-way
<u>CPU Utilization:</u>	43.3 %
<u>Software Pricing Tier:</u>	P20
<u>Memory (MB):</u>	6,563 of 16,384
<u>Disk Drives (arms):</u>	7 of 198
<u>Capacity (GB):</u>	50 of 13,971
<u>LPAR-able:</u>	Shared

## Scenario #4 - Distribution Company

- **Current Environment**
  - ▶ **Company wants to improve their employee awareness of corporate activities, direction, HR changes and state of business**
    - 600 employees in 30 departments
    - 7-9 windows of information are planned
  
- **Opportunity**
  - ▶ **Leverage the corporate Internet and a thin client (browser)**
  - ▶ **Facilitate employee interaction with HR processes**
    - such as 401K, vacations, etc.
  - ▶ **Track weekly sales revenue for sales managers**
  - ▶ **Customized windows for local events and activities**
  - ▶ **Workload: 6-8 refreshes / hour - ( Total is  $8 \times 600 = 4800$  pages / hour )**

# WebSphere Portal Server

Search

[Home](#) | [Products & services](#) | [Support & downloads](#) | [My account](#)

IBM @server Workload Estimator

Version: 2003.1  
 06-Feb-03  
 www-912

---

## WebSphere Portal Server #1

WebSphere Portal Server Workload Definition

1. How many [web pages per hour](#) will be served during the busiest hour of the day? 10000
2. On average, how many [portlets](#) make up a web page? 8
3. What is the percentage breakdown of [portlet complexity](#)?
4. What is the [total size](#) of all the pages and files to be stored in IFS and database? (GB) 50 GB
5. [DBCS Support](#) for this workload: Default (No) ▼
6. [RAID Support](#) for this workload: Default (RAID-5) ▼

← Back
Next →

[Privacy](#) | [Legal](#) | [Contact](#)



## Scenario #4 - Distribution Company

- **Input Data into WLE for new system**
  - ▶ **10,000 hits / hour (4800 x 2 = 9600 pages/hour... aprox )**
  - ▶ **Plan for 2X Growth**
  - ▶ **Moderate Complexity**
  - ▶ **20 GB for a database**
  
- **Recommended Result**
  - ▶ **iSeries 810 with 2700 CPW**
  - ▶ **2-4 GB of RAM**
  - ▶ **4 Arms - Portal Server is sensitive to CPW and memory**

## Basic WebSphere on iSeries Sizing Guidelines

Product Name	Main Memory	Processor CPW
WebSphere Application Server v4.0, Advanced Single Server Edition for iSeries	750 MB	500
WebSphere Application Server v4.0, Advanced Edition for iSeries	750 MB	500
WebSphere Application Server - Express, V5.0 for iSeries	500 MB	300
WebSphere Application Server v5.0 for iSeries	750 MB	500
WebSphere Application Server Network Deployment v5.0 for iSeries	750 MB	450
WebSphere Commerce Professional Entry Edition for iSeries, v5.4	2 GB	950
WebSphere Commerce Professional Edition for iSeries, v5.4	2 GB	950
WebSphere Commerce Business Edition for iSeries, v5.4	2 GB	950
WebSphere Portal Enable for iSeries v4.1	750 MB	450

Notes:

- The above recommendations are minimum iSeries configurations. It is recommended to run a pilot workload to correctly size the system.
- The number of users, transactions, and type of application are major factors in driving the configuration.

## Sizing of WebSphere workloads Factors

- A Pilot workload running in a test environment would provide a more accurate sizing estimate -- *ideally*.
- WLE allows multiple workloads, but can also size separate workloads
- **Recommendation**
  - ▶ iSeries configured with L2 Cache for better perf. & WAS startup performance
  - ▶ iSeries server be at least 300 CPW, and 400 CPW if using EJB
- **Be aware ! WLE uses Minimum configuration rules for ...**
  - ▶ Number of disks arms and Amount of memory
- **WebFacing Considerations...**
  - Will require someone familiar with application to use
  - Always use the pre-touch tool; number of fields and screens are key

# Where do I get support.... Techline and Partnerline

## Americas

- **Web access**
  - ▶ **w3.ibm.com/support/americas/techline**
- **Techline Phone List**
  - ▶ **US and Canada -- 1-888-426-5525**
    - **Option 1 = Software Solutions**
    - **Option 2 = e(logo)Server Hardware and Systems Software**
    - **Option 3 = Storage and Networking**
    - **Option 4 = Competeline**
    - **Option 5 = Printing Systems**
    - **Option 6 = ISV Solutions**
  - ▶ **Business Partners (US and Canada) -- 1-800-426-9990**
  - ▶ **ISV Solution Sizing (US and Canada)-- 1-800-426-0222**
  - ▶ **Latin America --**
    - **For Techline, CompeteLine, and ISV Sizing requests, call tie-line 445-9700 or 770-835-9700**
    - **Business Partners call their in-country PartnerLine**

## Where to get support?

### Asia/Pacific

- **Techline**
  - ▶ [http://w3-6.ibm.com/support/ap/ap\\_techline.html](http://w3-6.ibm.com/support/ap/ap_techline.html)
- **AP Technical Sales Support (ATS)**
  - ▶ <http://w3-6.ibm.com/support/ap/>

### EMEA

- <http://w3-1.ibm.com/support/emea/econtact.html>

### Global Technical Sales and Support (for IBM)

- <http://w3.ibm.com/support/index.html>

# iSeries WebSphere Technical Certification

- **Objective**
  - ▶ Ability to develop an e-business strategy utilizing WebSphere offerings on iSeries
  - ▶ Translate customer requirements into e-Business opportunities on iSeries
- **Prerequisites**
  - ▶ iSeries Solution Design OR iSeries Solution Implementation Certification
- **Availability and Requirements**
  - ▶ iSeries WebSphere Technical Certification available May 31, 03
  - ▶ Certification will count toward number of technical certification required for channels
  - ▶ Each Field Technical Sales Support will be asked to certify in at least one tech.
- **Education**
  - ▶ New 4-day course with hands-on labs is being developed by iTC that discusses:
    - WebSphere product offerings, Express, WebFacing, network and security,
    - solutions architectures, HTTP, scalability, integration, etc. - - May 03
- **Key Websites**
  - ▶ [www-1.ibm.com/certify/certs/a4\\_index.shtml](http://www-1.ibm.com/certify/certs/a4_index.shtml) and [www.ibm.com/certify](http://www.ibm.com/certify)

## iSeries WebSphere Sales Certification

### ■ - Objectives

- ▶ Discuss and position the WebSphere product offerings on iSeries
- ▶ Identify WebSphere and eBusiness opportunities on iSeries
- ▶ Leverage the different resources available when selling WebSphere on iSeries

### ■ Prerequisites

- ▶ iSeries Sales Certification

### ■ Availability and Requirements

- ▶ iSeries WebSphere Sales Certification available by March 31, 03
- ▶ iSeries Sales Specialists to be certified by June 30, 03
- ▶ Channels sales to be certified by December 31, 03

### ■ Education

- ▶ Update SW272/AS049 to reflect new iSeries and WebSphere offerings - March 03
- ▶ Offer a distance learning version of SW272 course - April 03

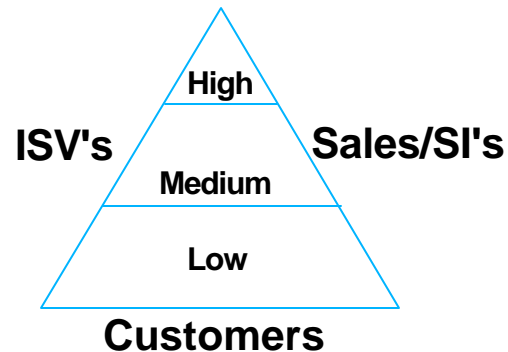
### ■ Key Websites

- ▶ [www-1.ibm.com/certify/certs/a4\\_index.shtml](http://www-1.ibm.com/certify/certs/a4_index.shtml) and [www.ibm.com/certify](http://www.ibm.com/certify)

Now that we've sized the system...  
what about skills?



# Sophistication & Job Role Roadmaps



## Pyramid of Sophistication

- ▶ **High:** WAS 5.0, Java Deployment, New Apps, EJB, Integration, MQ Series, workload balancing
- ▶ **Medium:** WebFacing, some integration, Admin
- ▶ **LOW:** WAS Express, WebFacing, Basic Admin

Job Role	Description
<b>WebSphere Solution Sales</b>	<ul style="list-style-type: none"> <li>- Articulate WAS offerings, understand eBusiness strategy and available offerings</li> <li>- Identify customer issues &amp; propose solutions to address</li> </ul>
<b>WebSphere Solution Advisor</b>	<ul style="list-style-type: none"> <li>▶ Consult on all WebSphere offerings, positioning, sizing, etc.</li> <li>▶ Consult on iSeries application architecture and design, Web Infrastructure, WebSphere Development, Java, EJBs, etc.</li> <li>▶ Develop Web based solutions utilizing WebSphere technology to address customer requirements and needs</li> </ul>
<b>WebSphere Administrator</b>	<ul style="list-style-type: none"> <li>▶ Install &amp; Configure the application server and other products</li> <li>▶ Manage WebSphere Environment; apply fixes; manage workload</li> <li>▶ Manage hardware configuration and WAS instances</li> </ul>
<b>WebSphere Developer</b>	<ul style="list-style-type: none"> <li>▶ Understand WDS and Eclipse offerings; Leverage WebFacing technology to enable 5250 application to the Web</li> <li>▶ Knowledgeable of OO concepts, Java, Servlets, EJBs</li> <li>▶ Knowledgeable of DB2, application performance, issues</li> </ul>

## WebSphere on iSeries Skills Roadmaps

- **WebSphere on iSeries Sales Skills**
- **WebSphere on iSeries Technical Solutions Advisor - Consultant**
- **WebSphere on iSeries Administration**
- **Developers**
  - ▶ **WebFacing and Eclipse**
  - ▶ **WAS Developer - RPG to Java Developers**
  - ▶ **Advanced WAS Developer - EJB and MQ Series**

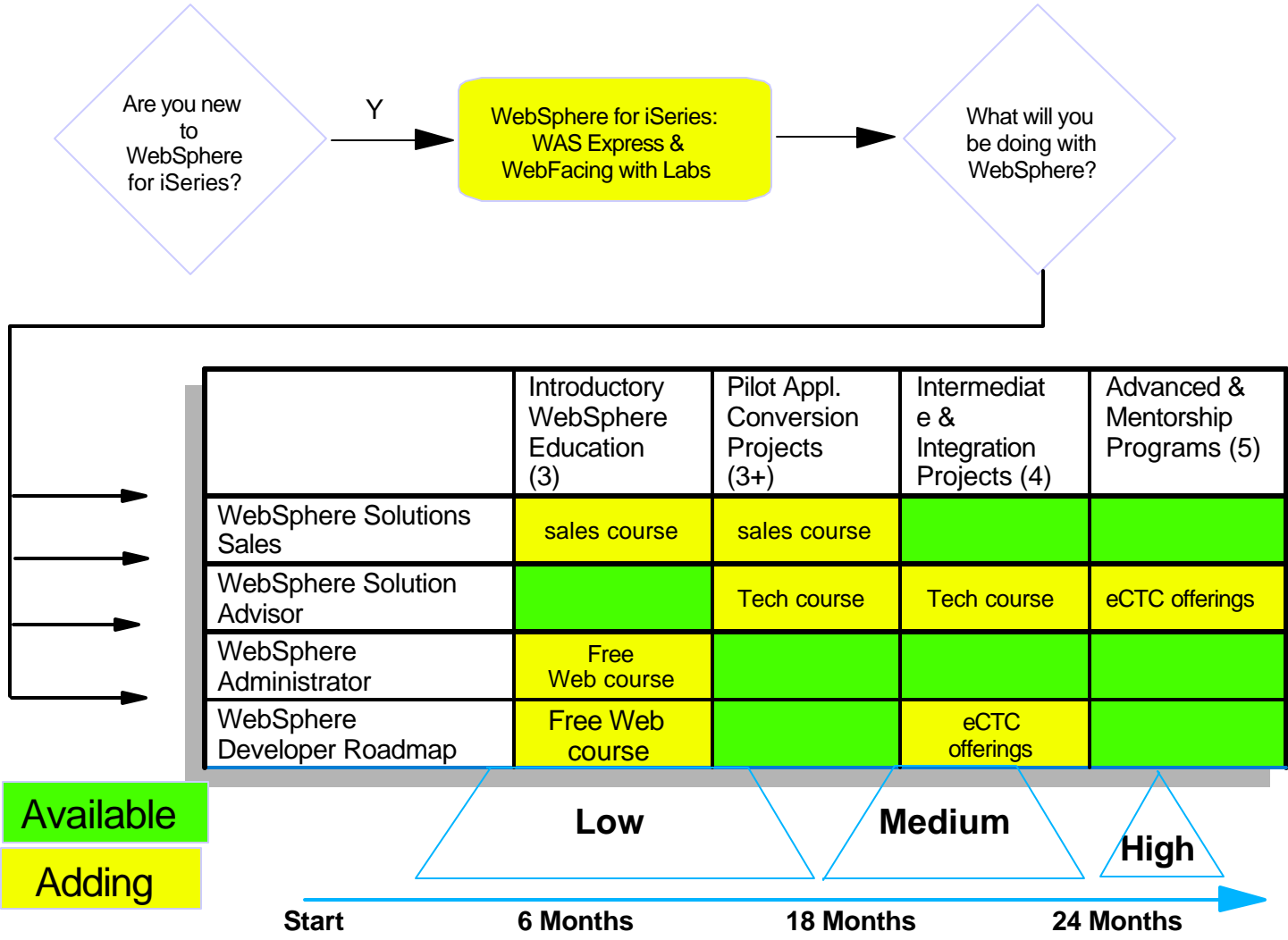
Skill development roadmaps are in the appendix

**Thank you!**

**Questions...**

# Appendix

# WebSphere for iSeries - Enablement Roadmaps



# Solutions Sales Enablement Roadmap

Available  
Adding

	Introductory WebSphere Education (3)	Pilot Appl. Conversion Projects (3+)	Intermediate & Integration Projects (4)	Advanced & Mentorship Programs (5)
WebSphere Solutions Sales	sales course	sales course		

Available

**Redbooks**

SG24-5694: iSeries eBusiness Handbook  
iSeries WebSphere Sales Guide

**Online courses**

**iSeries Campus**

- e-infrastructure whitepaper
- Connect for iSeries overview
- iSeries WebSphere Commerce
- B2B Primer
- e-business 101 (TECH IBP)
- e-business 201 (TECH IBP)
- App. Globalization on AS/400

**Key Weblinks**

w3.ibm.com/sales - eServer Sales

**Service Offerings**

WebSphere FICA for iSeries

Available

**Education**

AS039-iSeries Sales School - 3 d  
AS040-iSeries Sales School - 1 d  
AS045-iSeries Sales School - 2 d  
ITC12 - Web Enablement

**Certification**

- www.ibm.com/certify
- iSeries certifications
- WebSphere certifications

**Collateral**

S6213-New user Sales Kit  
S6215-Advanced User Sales Kit  
Start Simple Grow Fact Sales Kit  
Executive Briefing Demos  
WebSphere Portal Demo

**Tools**

Workload Estimator  
iSeries Quicksizer

Available

**Support Centers**

IBM Design Centers  
Executive Briefing Center  
VAD WICs (3 in the US)

**Assistance**

Geo Advanced Tech Support  
Field Tech Support (FTSS)  
Techline/PartnerLine  
WW - WSSC

2003

**Education**

eSTSU (4 cities, 3 topics), 1Q  
Video Tape eSTSU WS sessions  
Geo Roadshow (AP, EMEA, AG)  
iSeries Sales School - Update  
SW272-Selling WS on iSeries-1Q  
Monthly Product Telecon

**Certification**

iSeries Sales Certification- 1Q  
Selling WebSphere iSeries-1Q

**Other Activities**

Monthly iSeries WS Telecons

**Tools**

Workload Estimator - Upd - 1Q

<http://www-919.ibm.com/developer/education/ibo/curr.html?bldg>  
<http://www-919.ibm.com/developer/ebiz/webfacing/index.html>

# Solution Advisor Enablement Roadmap

Available  
Adding

	Introductory WebSphere Education (3)	Pilot Appl. Conversion Projects (3+)	Intermediate & Integration Projects (4)	Advanced & Mentorship Programs (5)
WebSphere Solution Advisor		Tech course	Tech course	eCTC offerings

Available

Available

Available

2003

**Redbooks**

- SG24-5755: Servlets and JSP
- SG24-6559: WS J2EE Appl. Dev.
- SG24-6804: iSeries Access& Host
- REDP0516: WSD Tools
- REDP0414: Intro to WDS*iSeries*
- REDP0503: WDS tools *iSeries*
- \*\* same as developer

**Online courses**

- iSeries Campus Site**
- OS/400 VPN Overview
- Intro. to MQSeries for AS/400
- XML Introduction
- AS/400 Security (TECH IBP)
- Internet Security (TECH IBP)
- IBM Payment Server
- AS/400 Networking
- iSeries 101 (TECH IBP)
- Web Appl. Dev. Strategies
- Application Models for WS
- TCP/IP Overview & Config.
- Net.Data Advanced Topics

**Education**

- AS041-iSeries Tech Sol. Dsgn - 3 d
- AS042-iSeries Tech Sol. Impl. - 3 d
- AS046-iSeries Tech Sol. Dsgn - 2 d
- ITC12 - Web Enablement

**Collateral**

- iSeries Campus**
- e-infrastructure whitepaper
- Connect for iSeries overview
- iSeries WebSphere Commerce
- B2B Primer
- e-business 101 (TECH IBP)
- e-business 201 (TECH IBP)
- App. Globalization on AS/400

**Key Weblinks**

[www.iseries.ibm.com/websphere](http://www.iseries.ibm.com/websphere)

**Service Offerings**

SI Services - WS iSeries BPs

**Redbooks**

List goes here....., Date Avail...

**Online courses**

List goes Here

Collateral

List goes here

**Key Weblinks**

List gies here...

**Service Offerings**

List Goes here...

**Labs/Forums**

List Goes here...

**Tools**

Workload Estimator

**Education**

- eSTSU (2 cities, 3 topics), 1Q
- Video Tape eSTSU Tech WS - 2Q
- WebSphere Impl class-4 days-1Q
- Geo Roadshow (AP, EMEA, AG)
- ITSO Forum (3 cities, WW)
- iSeries WebSphere Tech Impl-1Q
- Monthly WebSphere Tech Calls

**Certification**

- iSeries Tech Design Cert. Upd-1Q
- iSeries Tech Impl Cert. - upd - 2Q
- iSeries WS Tech Cert. - new -2Q

**Service Offering**

WebSphere end-to-end Proj Mgt

**Key Websites**

Review:  
[www.iseries.ibm.com/websphere](http://www.iseries.ibm.com/websphere)

- <http://www-919.ibm.com/developer/ebiz/webfacing/index.html>
- <http://www-1.ibm.com/servers/eserver/iseries/education/>

Server sizing for WebSphere on iSeries

© 2003 IBM Corporation

# Administrator Enablement Roadmap

Available  
Adding

	Introductory WebSphere Education (3)	Pilot Appl. Conversion Projects (3+)	Intermediate & Integration Projects (4)	Advanced & Mentorship Programs (5)
WebSphere Administrator	Free Web course			

Available

**Redbooks**

- SG24-6588: WAS 5.0 install & Cfg
- SG24-6815: WAS Install & Config
- SG24-6256: Java & WAS Perf.
- TIPS0076: Tips for WAS Config

**Online courses**

- WS Commerce 5.4 Prog Config
- WS Commerce 5.4 Prog Impl
- The New iSeries Access Family
- Integrating XML & DB2 LAB
- XML Technology & iSeries
- WebSphere Commerce 5.4
- Connect for iSeries deployment
- IBM HTTP Server for AS/400
- Web Env. on iSeries using WAS
- iSeries V5R1 Network Security
- OS/400 V5R1 VPN Update
- WebServing w/ HTTP Server
- TCP/IP Comm. & Support

AS/400 VPN Series 4 sessions  
Server sizing for WebSphere on iSeries

Available

**Education**

- SW246 - Intro to WAS Admin
- SW270 - Basic WAS Admin
- SW271 - Advanced WAS Admin
- SW222 - Advanced Multiplatform
- SW6233 - WAS Performance
- WF381 - WAS 4.0 AE Admin
- SW242 - WAS Perf & methods
- ITS75 - WAS install & Config
- iSeries 400 Perf. Workshop
- iSeries 400 Perf. Explorer

**Collateral**

- VPN for iSeries Impl.
- WebSphere: Implementing HTTP Server Config Tips
- Get Net.Data Up and Running

**Key Weblinks**

[www.iSeries.ibm.com/WebSphere](http://www.iSeries.ibm.com/WebSphere)

Available

**Service Offerings**

- FICA for WAS on iSeries
- First Engagement for Commerce

**Labs/Forums**

- COMMON Labs
- Tech Conference

**Tools**

- WAS Performance

<http://www-919.ibm.com/developer/education/ibo/curr.html?bldg>  
<http://www-1.ibm.com/servers/eserver/iseries/education/>

2003

**Redbooks**

- WDS& and WebFacing - upd
- WebSphere Portal Server Migrating WAS 3.5 to 5.0
- Tuning WAS Performance -upd

**Collateral**

- Presentation/Labs for WAS 5.0
- Tuning WAS Perf workshop - upd

**Education**

- SW270 - WAS Admin - update
- SW271 - WAS Adv Admin - Upd

**Service Offerings**

- Support IBM Telephone Dir
- First Engagement for WAS



# Developer Enablement Roadmap

Available  
Adding

	Introductory WebSphere Education (3)	Pilot Appl. Conversion Projects (3+)	Intermediate & Integration Projects (4)	Advanced & Mentorship Programs (5)
WebSphere Developer Roadmap	Free Web course		eCTC offerings	

Available

**Redbooks**

- SG24-5755: Servlets and JSP
- SG24-6559: WS J2EE Appl. Dev.
- SG24-6804: iSeries Access & Host
- REDP0516: WSD Tools
- REDP0414: Intro to WDS iSeries
- REDP0503: WSD tools iSeries

**Online courses**

- iSeries campus
  - WS Commerce 5.4 prog
  - WS Commerce 5.4 Impl.
  - XML and DB2 Integration
  - WS Commerce 5.4
  - iSeries Access & WS Host Pub.
  - AS/400 Toolbox for Java
  - Extending iSeries Host Apps
  - JVM V5R1 Update
  - VisualAge for Java
  - Web business with Servlets
  - Java for RPG Programmers
  - Introduction to Java on iSeries
  - WS MQ and Java MS Intro
  - Server sizing for WebSphere on iSeries
  - Integrating Your Existing Apps.

© 2003 IBM Corporation

Available

**Education courses**

- SW273 - Intro to WDS
- SW274 - Intro to Eclipse
- SW275 - WebFacing Workshop
- SW276 - iSeries WebSphere Pgm
- SW232 - Intro to Java
- SW6185 - Java for RPG Pgm
- N4410-WAS Development
- S6288-WebServices
- S6234-iSeries Web Deployment
- S6191-iSeries Java Tool Box
- S6183-iSeries Java/WebSphere
- SW242-WAS Perf. workshop

**Collateral**

- iSeries Campus
  - iSeries AD Trend & Directions
  - Get started w/Java on iSeries
  - iSeries WebFacing Tools
  - Servlets & JSP for iSeries
  - Hands On XML Lab
  - WebFace iSeries Applications
  - WebSphere: Servlet Support
  - Enterprise Java Beans
  - Introduction to XML

Available

**Service Offerings**

- WebFacing Conversion Workshop
- www.eserversoftware.net.com
- Commerce 1st
- Engagement-eCTC
- Managing end-to-end WAS-eCTC

**Labs/Forums**

- WAS Track in COMMON
- WAS Track at Tech Conf

**Tools**

- WAS Perf. Tool
- WAS Perf. Tool

- <http://www-919.ibm.com/developer/education/ibozedit.html?bldg>
- <http://www-919.ibm.com/developer/ebiz/webfacing/index.html>

2003

**Redbooks**  
 WDS and WebFacing - upd  
 WebSphere Portal Server  
 Migrating WAS 3.5 to 5.0

**Collateral**  
 Presentation/Labs for WAS 5.0  
 Tuning WAS Perf workshop - upd

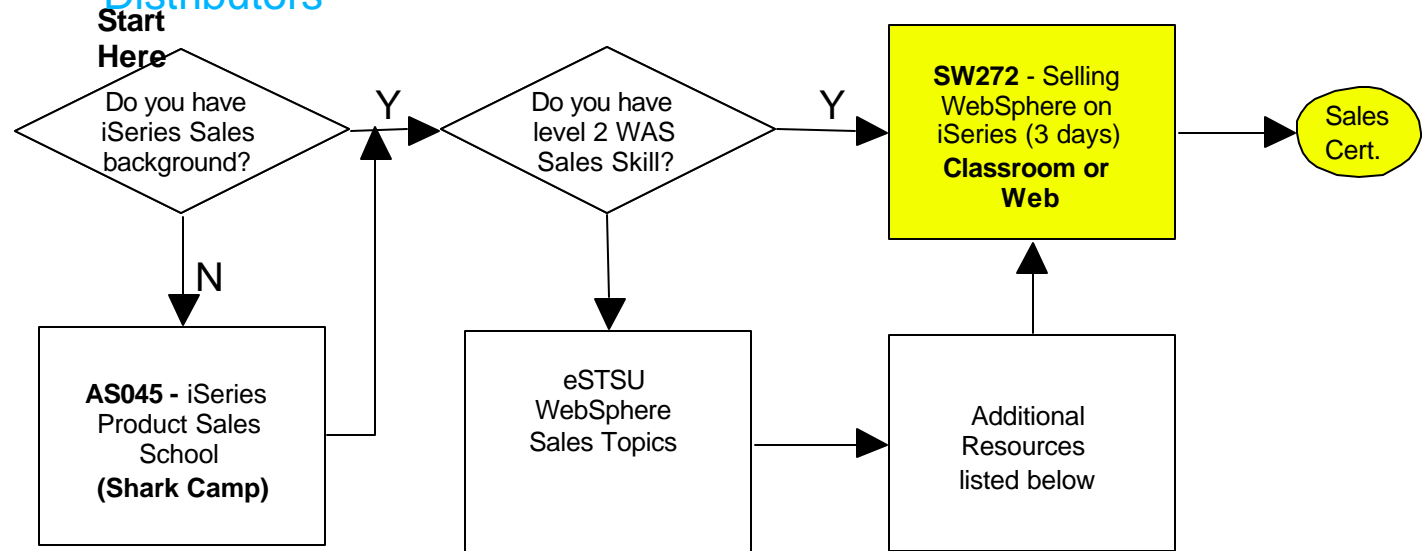
**Education**  
 SW273 - Intro to WDS - Update  
 SW274 - Intro to Eclipse - Update  
 SW275 - Intro to WebFacing  
 SW276 - iSeries WAS Pgm - Upd

**Service Offering**  
 WebSphere end-to-end Proj Mgt

**Support**  
 Support IBM Telephone Dir

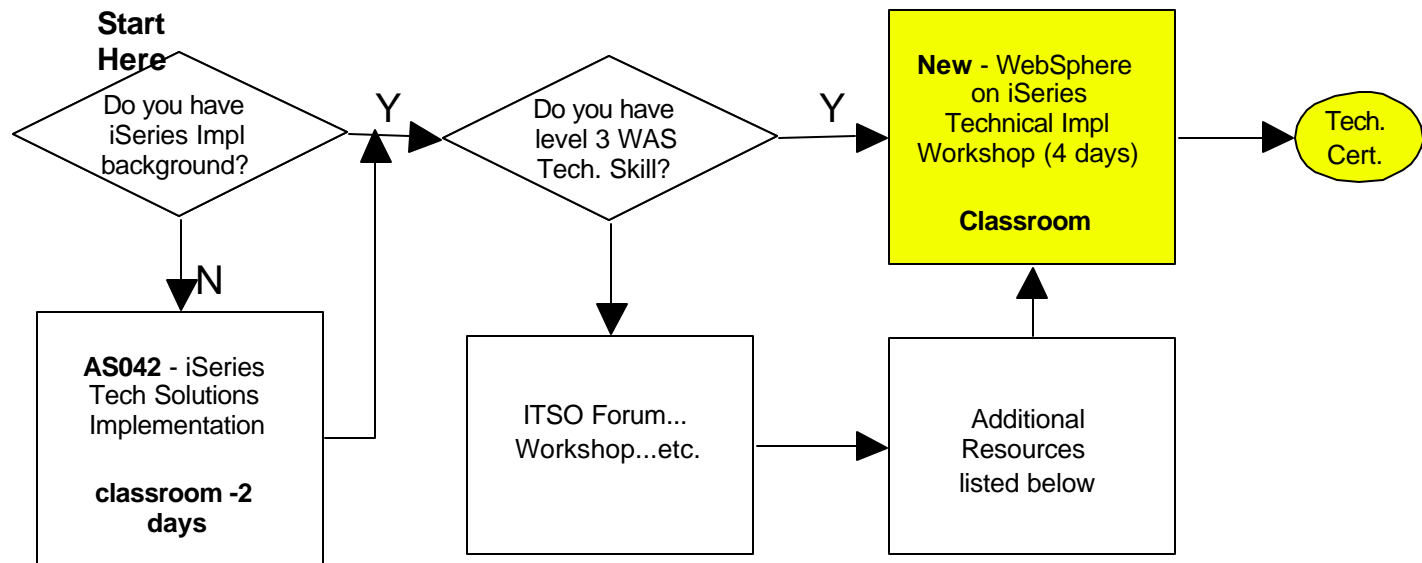
# Sales Education Roadmap

Audience: iSeries Sales Specialist, SP1s, SP2s & Distributors



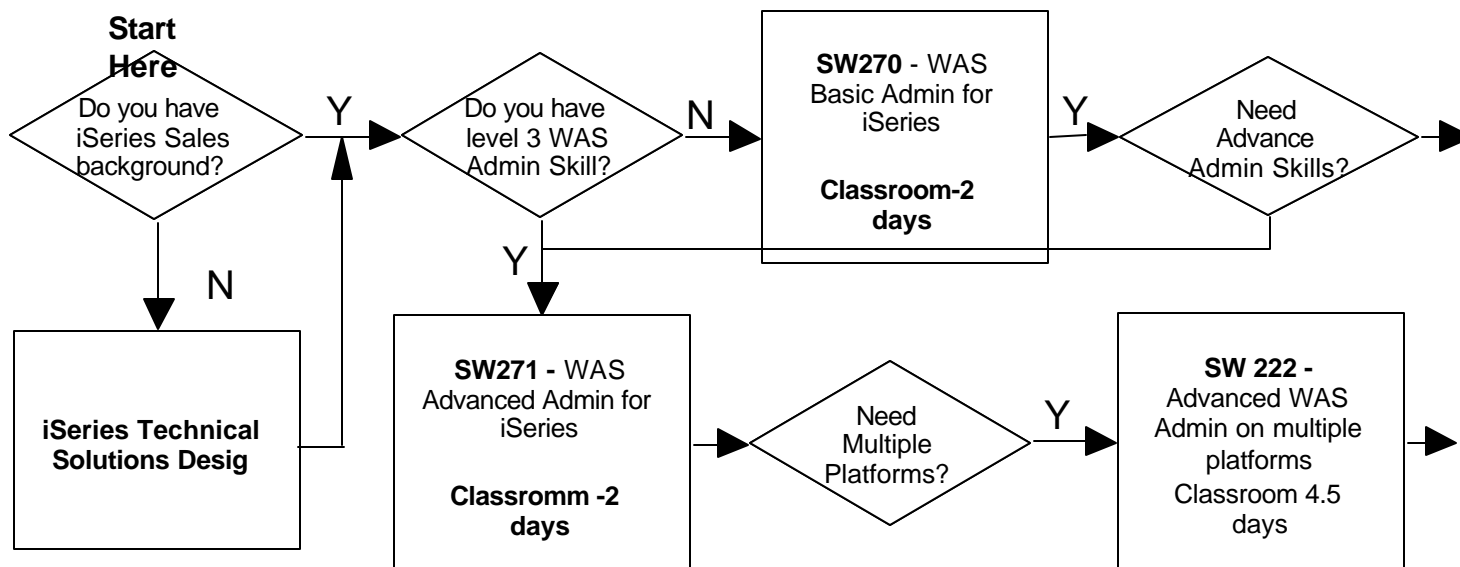
# Solution Advisor Education Roadmap

Audience: FTSS, ATS, SP1s, SP2s, SIs & Distributors



# Adminstrator Education Roadmap

Audience: Customers



**Additional Resources:**

- SG24-6815 WebSphere Installation
- SG24-6256 WebSphere Performance

**Weblinks:**

<http://www-919.ibm.com/developer/education/ibo/curr.html?bldg>

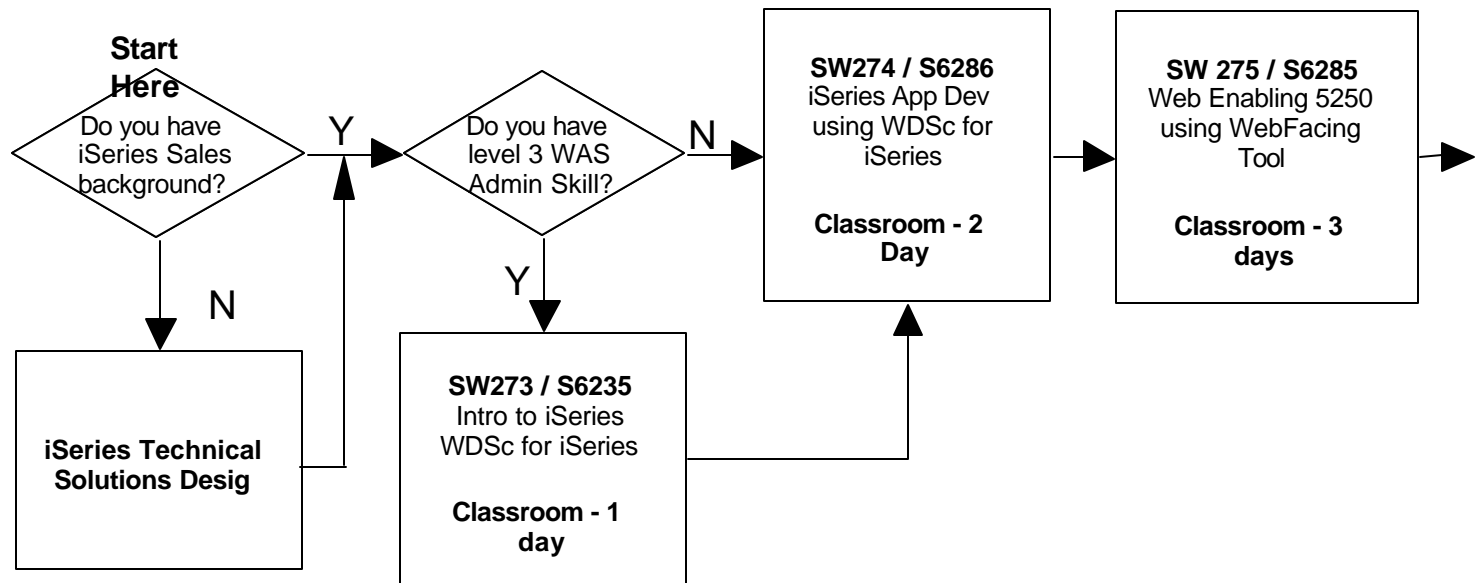
**Services:**

- FICA for WebSphere - <http://www-919.ibm.com/developer/websphere/assistance.html>
- Server sizing for WebSphere on iSeries

**Other Courses**  
 SW246 - 4 days  
 SW242- 4 days  
 WF381 - 4 days

# Developers Roadmap - Eclipse & WebFacing

Audience: Customers, Services and ISVs



## Additional Resources:

SG24-6600 Moderizing your existing iSeries Applications

### Weblinks:

<http://www-919.ibm.com/developer/education/ibo/curr.html?bldg>

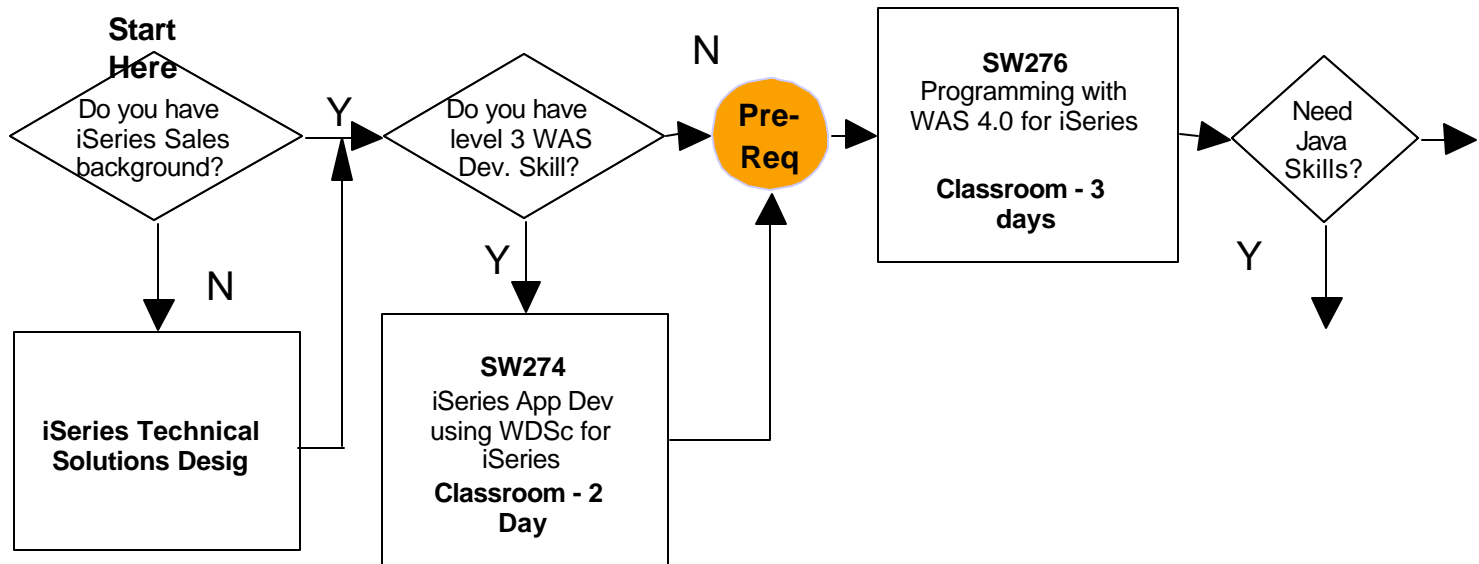
<http://www-919.ibm.com/developer/ebiz/webfacing/index.html> - WebFacing resources

### Service Offerings

- WebFacing Conversion Services Offering by selected Partners
- "Free" Web based Education for WAS Express and WebFacing (Avail 02/03)

# Developer Roadmap - WAS Dev & Java

Audience: Customers, ISVs and Services



## Additional Resources:

<http://www-919.ibm.com/developer/education/ibo/curr.html?bldg> - IBE (free)

## Service Offering

- Create "1st Engagement for WAS" offering similar to Commerce Suite - eCTC
- Create new offering for managing end-to-end WebSphere project through eCTC

## Pre-Reqs

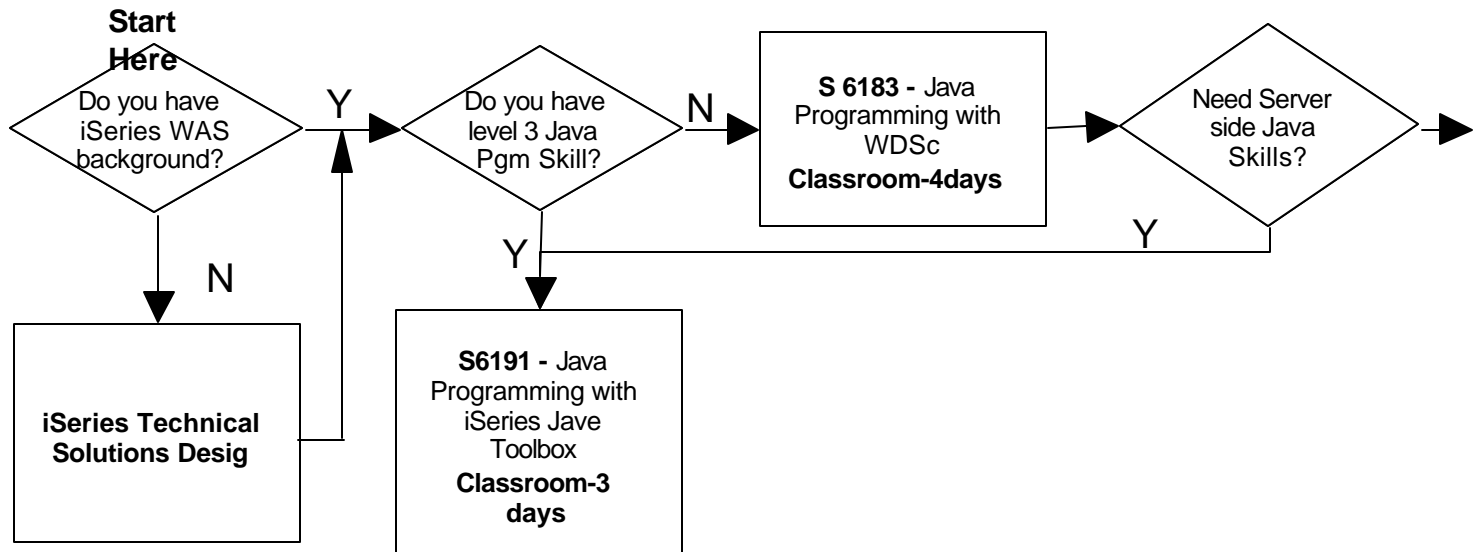
OB720 -OO Pgm Java  
N1980E - Java Pgm  
Java Experience

## Other Courses

S6184-No Update  
S6191-Java Tool Box  
S6183-Java/ WebSphere

# Developer Roadmap - Advanced & Integration

Audience: Customers, ISVs and Services



## Additional Requirements

<http://www-919.ibm.com/developer/education/ibo/view.html?ebz> - eBus IBE/IBP

## Service Offerings:

- Working on Create "1st Engagement for WAS" offering similar to Commerce - eCTC
- Create new offering for managing end-to-end WebSphere projects through eCTC

## Other Courses

S6184-No Update  
S6164 or SW276

## MQ Series/XML

MQ83C  
XM341 or M1905

# Summary

- **Familiar with the WLE questions...**
  - ▶ **WAS workload**
  - ▶ **Commerce**
  - ▶ **HTTP and Java**
- **Planned Workloads**
  - ▶ **WebFacing and Portal**
- **Skills Roadmaps**
  - ▶ **Sales**
  - ▶ **Solution Advisor**
  - ▶ **Administrator**
  - ▶ **Developer**
- **Where to get support...**



# WLE - Old Screen

# Trademarks and Disclaimer

© IBM Corporation 1994-2002. All rights reserved.

References in this document to IBM products or services do not imply that IBM intends to make them available in every country.

The following terms are trademarks or registered trademarks of International Business Machines Corporation in the United States, other countries, or both:

*Instruction: Refer to the following URL: <http://w3.ibm.com/legal/ipl/wtts>. Edit the list below, IBM subsidiary statement, and special attribution companies which follow so they coincide with your presentation.*

AS/400	IBM (logo)
AS/400e	iSeries
eServer	OS/400
IBM	

Lotus and WordPro are trademarks of International Business Machines Corporation and Lotus Development Corporation in the United States, other countries, or both.

*Instruction: For a complete list of Lotus/IBM trademarks, see [www.lotus.com/lotus/information.nsf/firstpages/copyright](http://www.lotus.com/lotus/information.nsf/firstpages/copyright) and edit the above statements to coincide with your presentation.*

MMX, Pentium, and ProShare are trademarks or registered trademarks of Intel Corporation in the United States, other countries, or both.

Microsoft and Windows NT are registered trademarks of Microsoft Corporation in the United States, other countries, or both.

Java and all Java-based trademarks and logos are trademarks or registered trademarks of Sun Microsystems, Inc. in the United States, other countries, or both.

SET and the SET Logo are trademarks owned by SET Secure Electronic Transaction LLC.

C-bus is a trademark of Corollary, Inc. in the United States, other countries, or both.

UNIX is a registered trademark of The Open Group in the United States and other countries.

Other company, product or service names may be trademarks or service marks of others.

Information is provided "AS IS" without warranty of any kind.

All customer examples described are presented as illustrations of how those customers have used IBM products and the results they may have achieved. Actual environmental costs and performance characteristics may vary by customer.

Information in this presentation concerning non-IBM products was obtained from a supplier of these products, published announcement material, or other publicly available sources and does not constitute an endorsement of such products by IBM. Sources for non-IBM list prices and performance numbers are taken from publicly available information, including vendor announcements and vendor worldwide homepages. IBM has not tested these products and cannot confirm the accuracy of performance, capability, or any other claims related to non-IBM products. Questions on the capability of non-IBM products should be addressed to the supplier of those products.

All statements regarding IBM future direction and intent are subject to change or withdrawal without notice, and represent goals and objectives only. Contact your local IBM office or IBM authorized reseller for the full text of the specific Statement of Direction.

Some information in this presentation addresses anticipated future capabilities. Such information is not intended as a definitive statement of a commitment to specific levels of performance, function or delivery schedules with respect to any future products. Such commitments are only made in IBM product announcements. The information is presented here to communicate IBM's current investment and development activities as a good faith effort to help with our customers' future planning.

Performance is based on measurements and projections using standard IBM benchmarks in a controlled environment. The actual throughput or performance that any user will experience will vary depending upon considerations such as the amount of multiprogramming in the user's job stream, the I/O configuration, the storage configuration, and the workload processed. Therefore, no assurance can be given that an individual user will achieve throughput or performance improvements equivalent to the ratios stated here.

Photographs shown are of engineering prototypes. Changes may be incorporated in production models.