

Pulse
Comes to You

IBM®



数据中心自动化管理



© 2009 IBM Corporation

数据中心面临的挑战

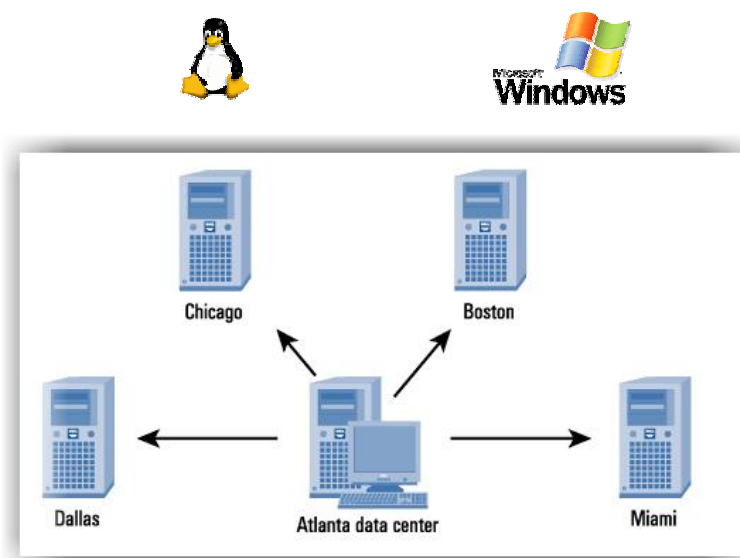
客户环境内两类不同的管理单元

企业信息官 (CIO)

数据中心单元
(管理服务器和应用)



分布式单元
(管理桌面机和远端服务器)



两种不同的业务需求

数据中心自动化

§主要资源

- § Servers
- § Networks
- § Storage
- § O/S, Middleware, Applications
- § Databases
- § Virtualized resources



§主要功能需求

- § Resource provisioning
- § Life Cycle Management
- § Complex automation
- § Back-up/recovery
- § Broad O/S and resource coverage
- § Resource security
- § Integration w/other products
- § Secure operation
- § Auditing
- § Customization

分布式管理

§主要资源

- § Desktops
- § Laptops
- § Remote Servers
- § ATMs, PDAs, Cell Phones, ...
- § O/S, Middleware, Applications
- § Application Virtualization



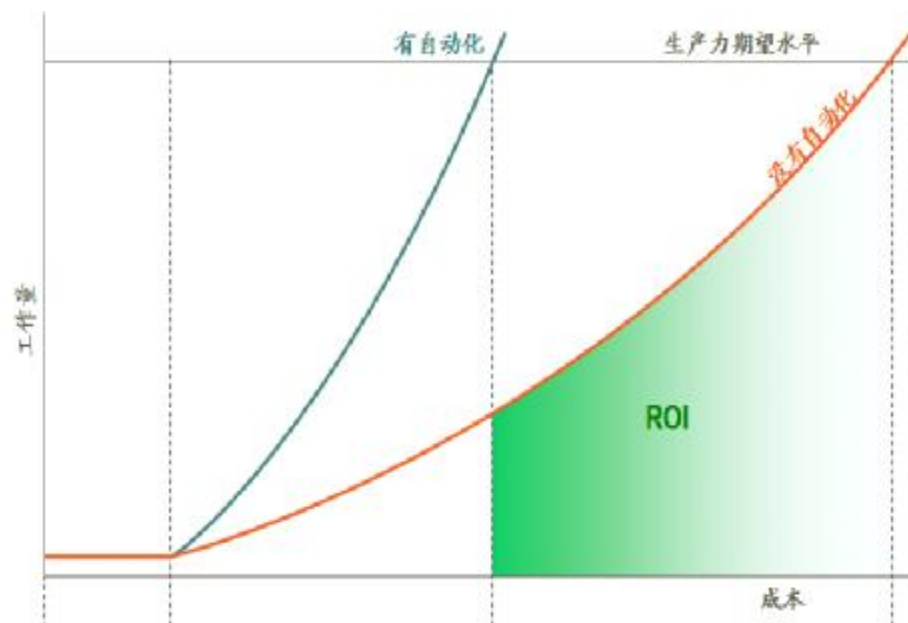
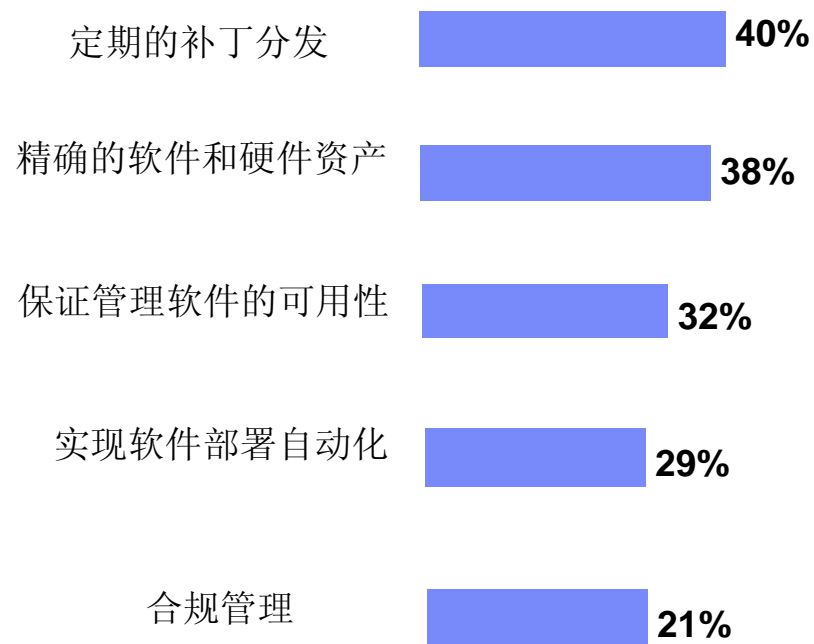
§主要功能需求

- § Resource inventory control
- § Bare metal install
- § Software distribution
- § Remote Control
- § Software & security compliance
- § Scalability
- § Scheduled automation
- § Ease of use



理解市场需求

当管理数据中心服务器时，您遇到
以下问题了吗？



业务发展带来自动化需求

自动化：解决日益突出的IT操作管理问题



成本与增加
服务支付的
矛盾

系统和网络的操作成本日益增加

数据和信息量的爆炸

部署新的应用和服务更加困难



支持业务的
灵活性与安
全性的矛盾

公司资产和客户信息的安全性

法律和政府的强制要求，如版权

系统和应用，要求能尽快支持业务的变化

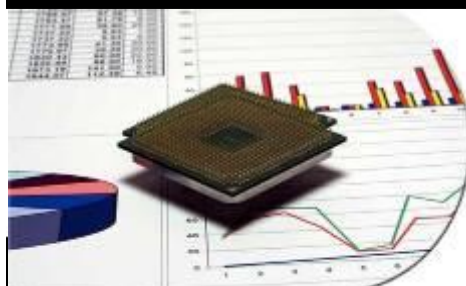


能效的问题

能源需求和成本的增加

电源供应和散热都会影响IT的操作

保护环境和對社会的责任



应用模型的
更新需求

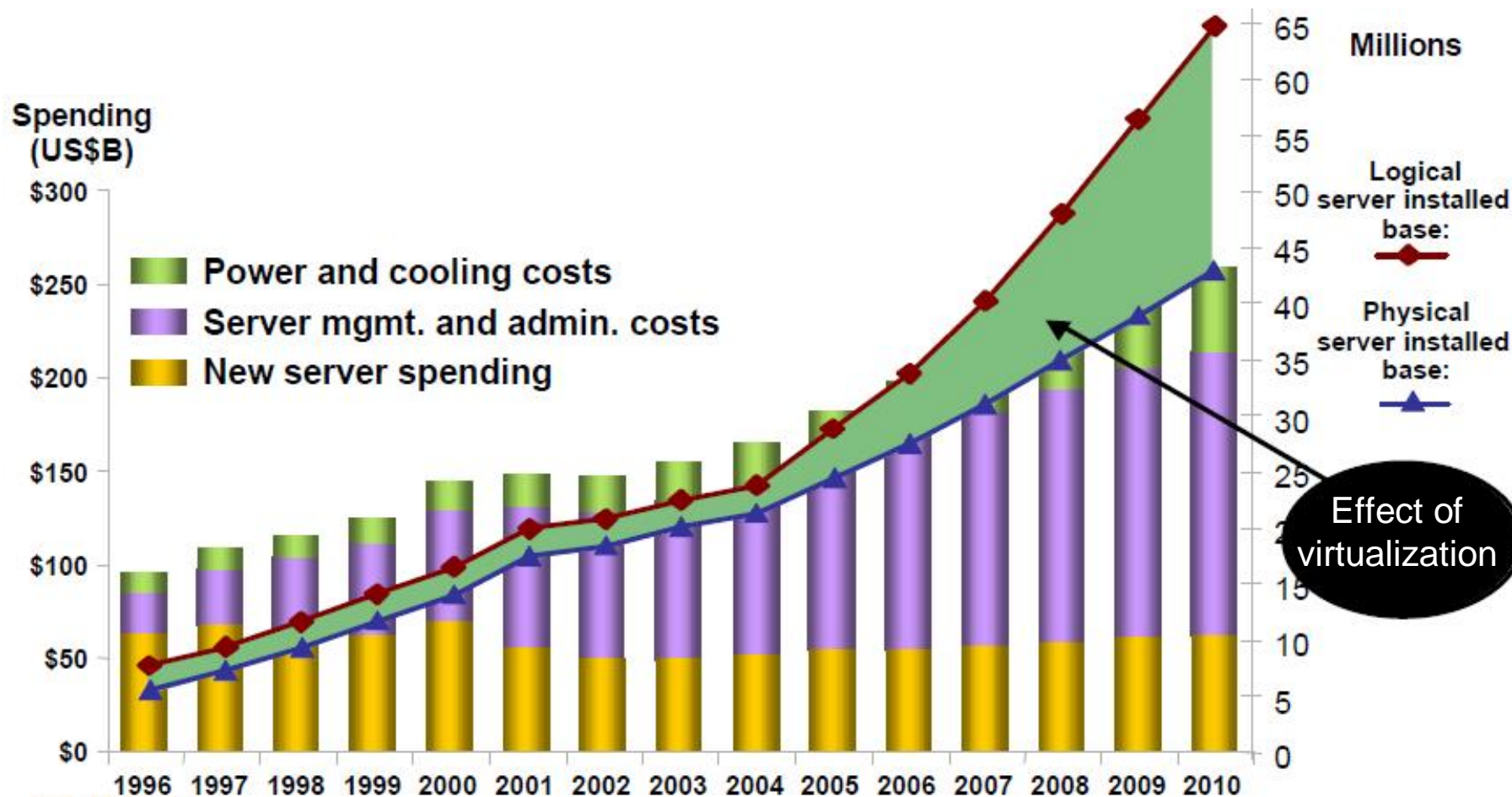
新的特性，如不可预知的工作量

难于管理快速增加的“敏捷”对象和数据量

实时交互操作时需要更大的灵活性



虚拟化、绿色计算成为数据中心建设必须要考虑



Source: IDC, "CIO Strategies to Build the Next Generation Data Center," Doc # DR2007_5VT, February 2007.

数据中心自动化部署的要求

§ 自动化地实现配置、部署，将资源配置到需要的地方

§ 预先管理资源的需求

§ 资产的自动发现

§ 软件分发、补丁管理以及内容发布

§ **好处**：更高的IT资产利用率、质量、安全、效率、降低成本





IBM服务管理平台

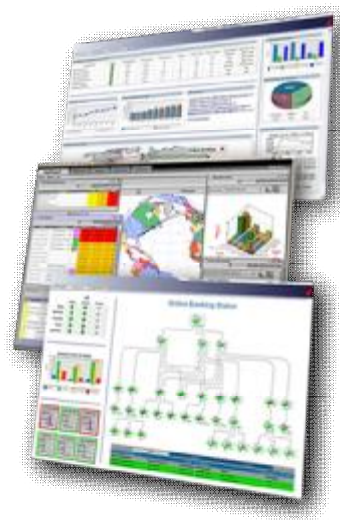
Pulse

Comes to You 2009



创新的IBM服务管理

可视化



快速响应
以及最佳决策

控制



提高质量
以及降低风险

自动化



降低成本
以及建立弹性

Pulse

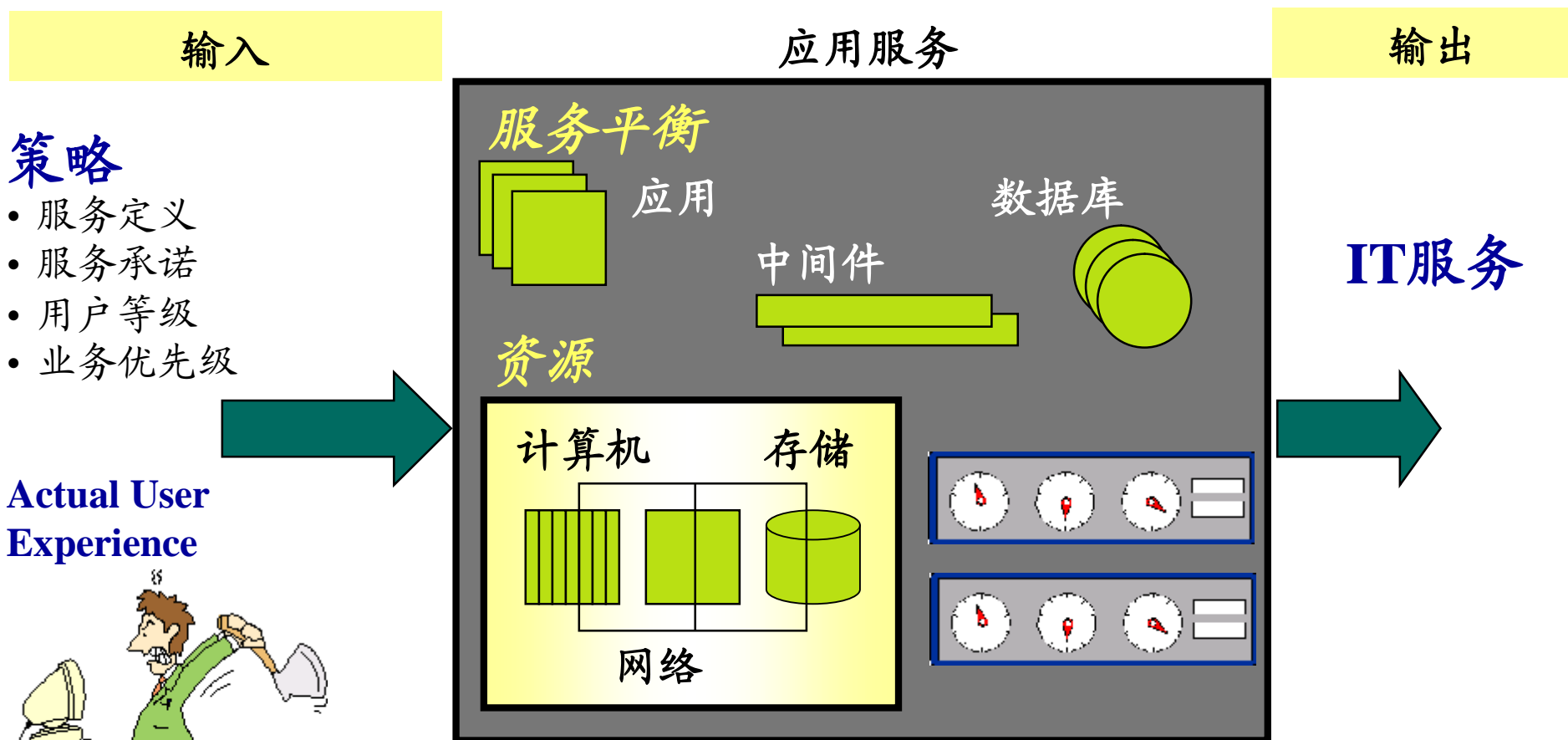
Comes to You 2009



基于策略的自动化计算

基于策略的、动态的、有效的:

- 主动供应: Deployment, Growth
- 优化: Resource Efficiency
- 可用性: Predictable, Service Level



Actual User Experience



Tivoli的新一代数据中心自动化的策略方向

集成

基于请求的分配

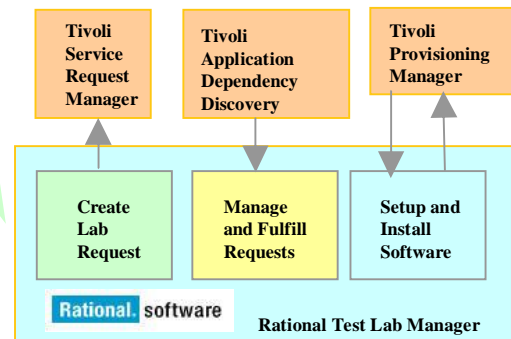


统一的访问界面

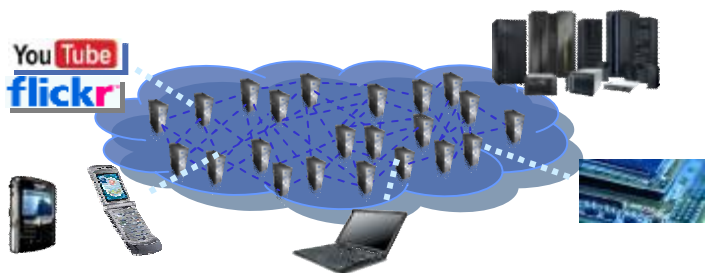
通用基本服务



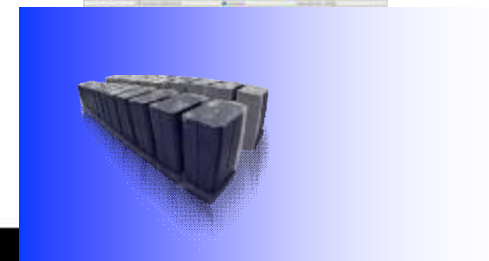
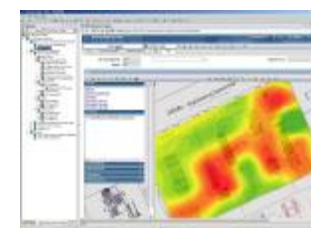
测试实验室的主动资源分配



云计算



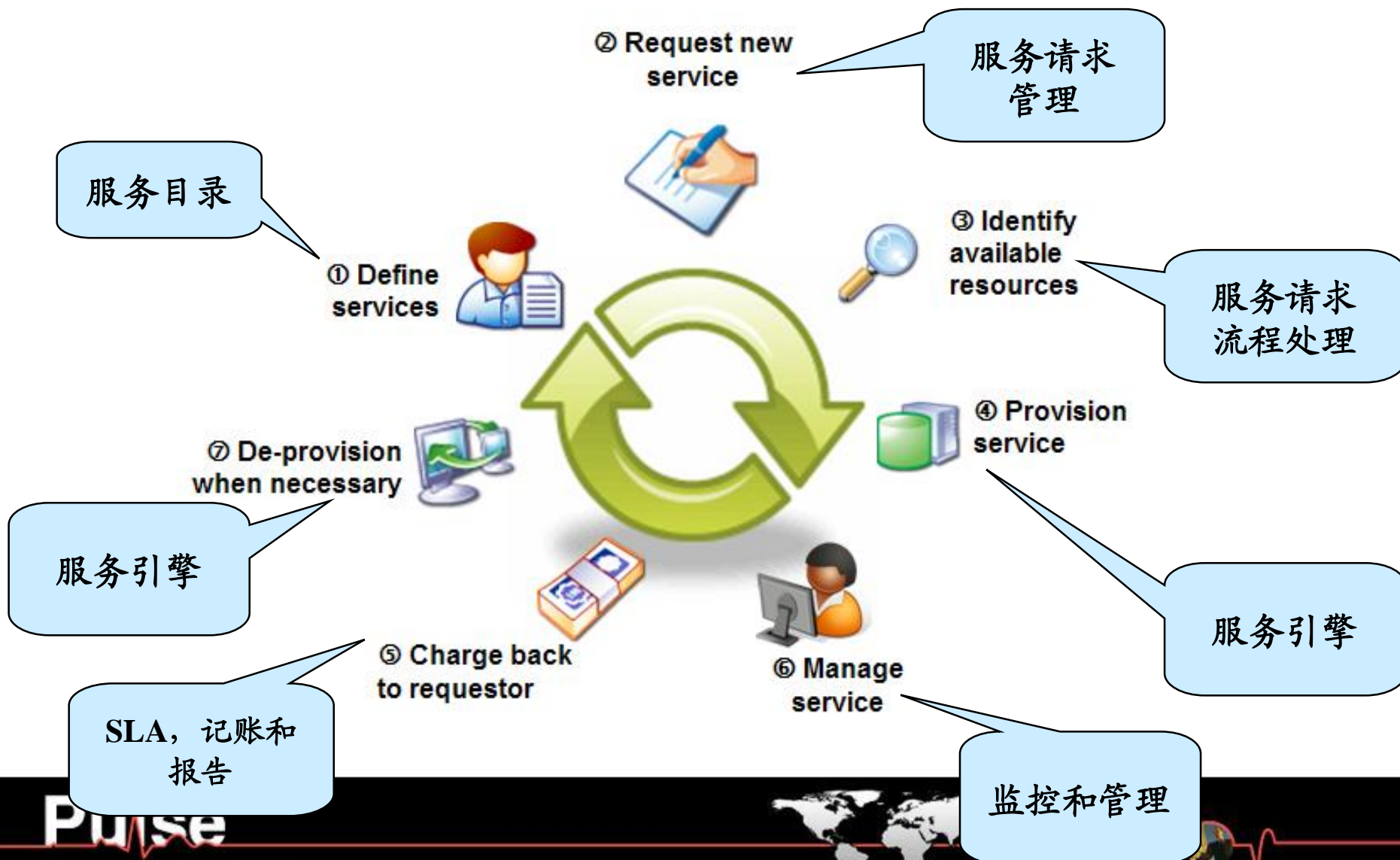
绿色计算



IBM具有生命周期管理的 数据中心自动化



管理自动化服务的生命周期



服务目录



Offering Catalog

IBM Tivoli Service Request Manager 7.1 Service Catalog

Searching in: CATALOG1 IT Services

Shopping Cart
Item(s) in Cart: 0 > View Cart
> View All Carts
> Start New Cart

Find what you need
View All Offerings

Search by Keyword

Search by Category

- Composite Services
- Distributed Client Services
- Data Network Services
- Enterprise Security Management
- Fixed Cost Service Requests
- Server Systems Management

There are no breadcrumbs to display.

Favorite Offerings

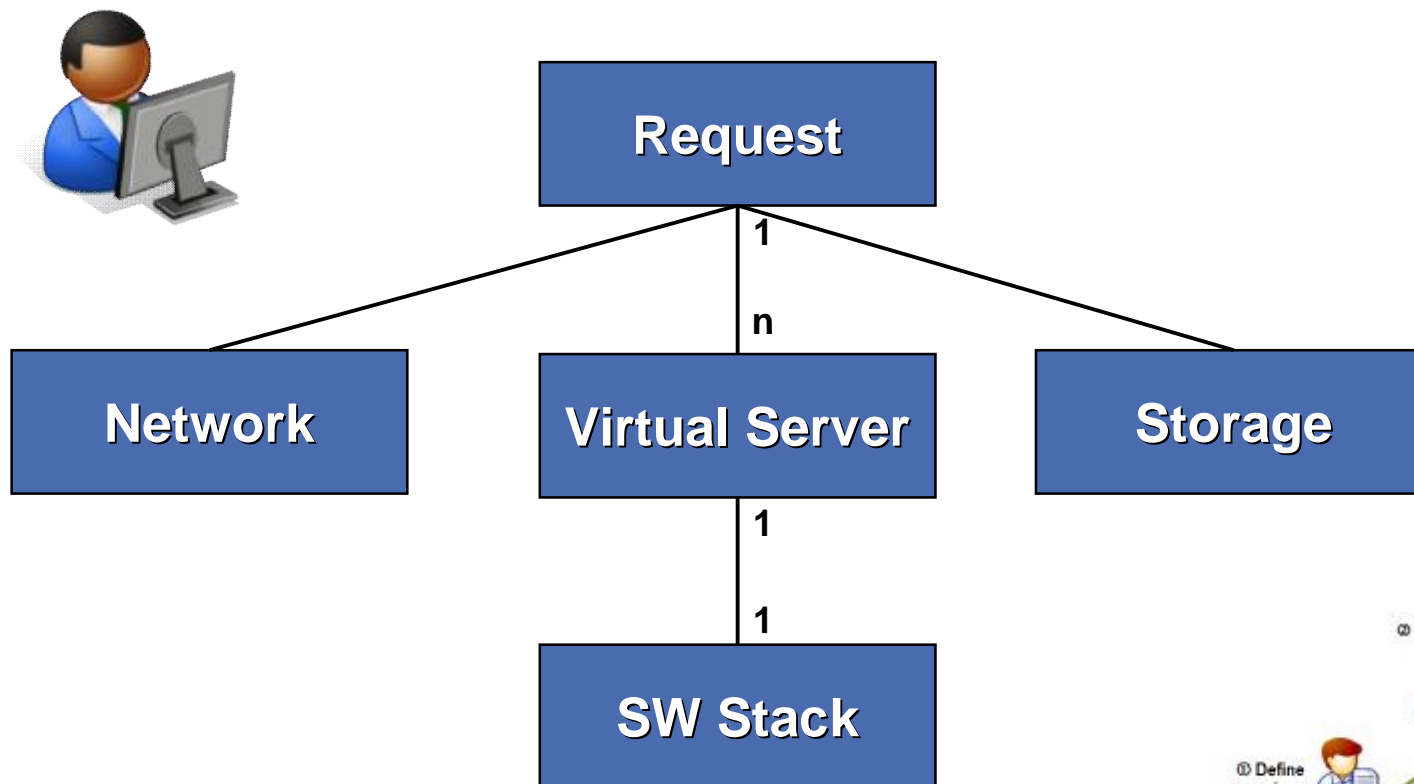
Description	Price	Currency
Add Database to Server Premium -10 days	350.00	USD
Add Database to Server Standard DLY	175.00	USD
Build New Server with Middleware	1,125.00	USD

Available Offerings

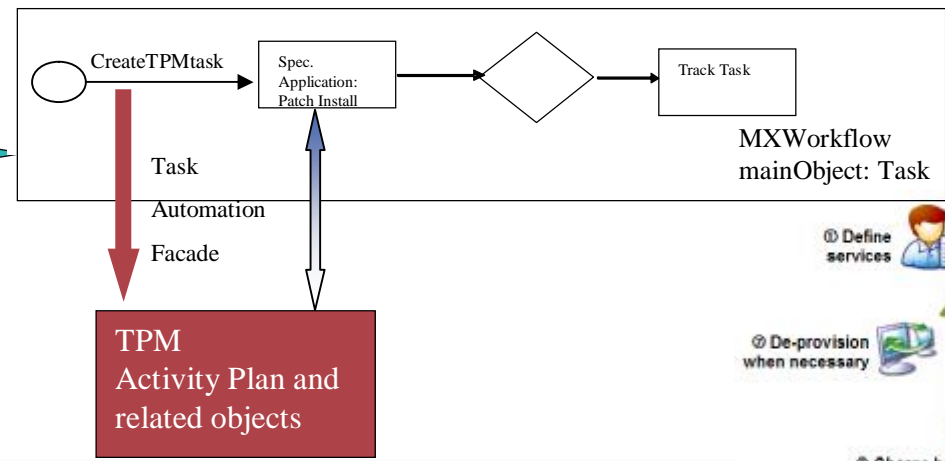
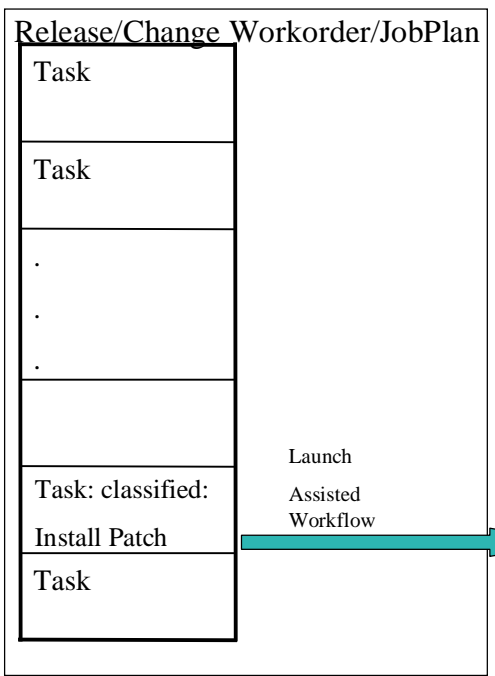
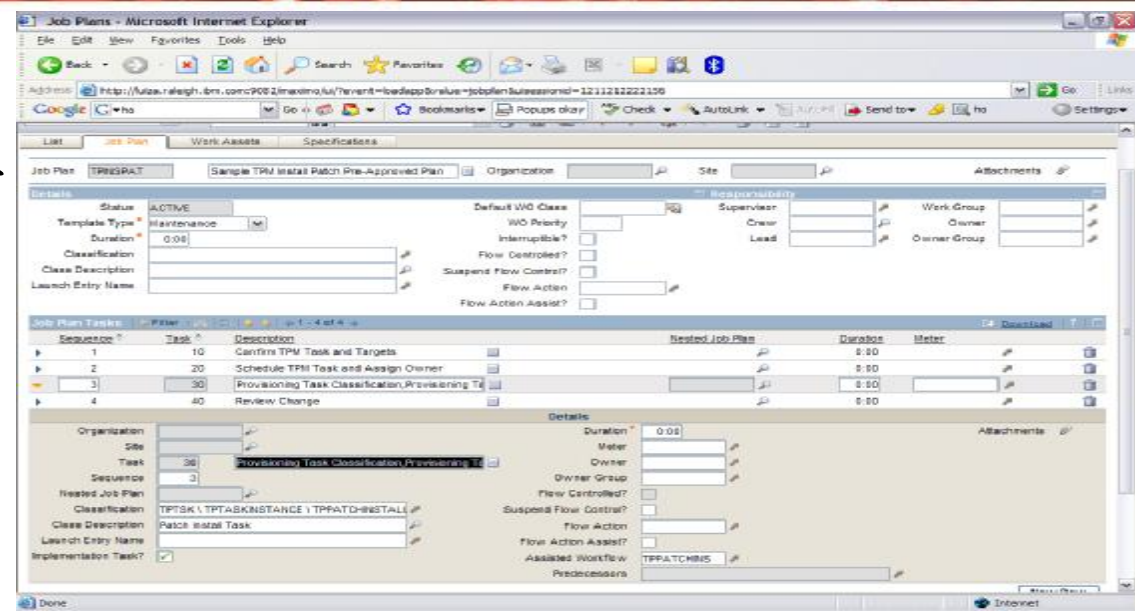
Description	Price	Currency
Add Database to Server Premium -10 days	350.00	USD
Add Database to Server Standard DLY	175.00	USD
Build New Server with Middleware	1,125.00	USD
Build New Standard Server Image	195.00	USD
Build Standard Server	825.00	USD
DB Install and Config	150.00	USD
Deploy Server to Floor	150.00	USD
Firewall Change Requests	295.00	USD
IBM Launch in Context	25.00	USD
ITIM - Lotus Notes Change Password	25.00	USD
ITIM - Lotus Notes Reset Password	25.00	USD
Lotus Notes - Change Password	25.00	USD
Lotus Notes - Change User Name or Certif	25.00	USD
Lotus Notes - Create Account	25.00	USD
Lotus Notes - Delete Account	25.00	USD
Middleware Install and Configure	500.00	USD
Minor Facility Request	250.00	USD
Minor Site Enhancement	325.00	USD
Office Move Request	200.00	USD
Remove Database From Server	175.00	USD



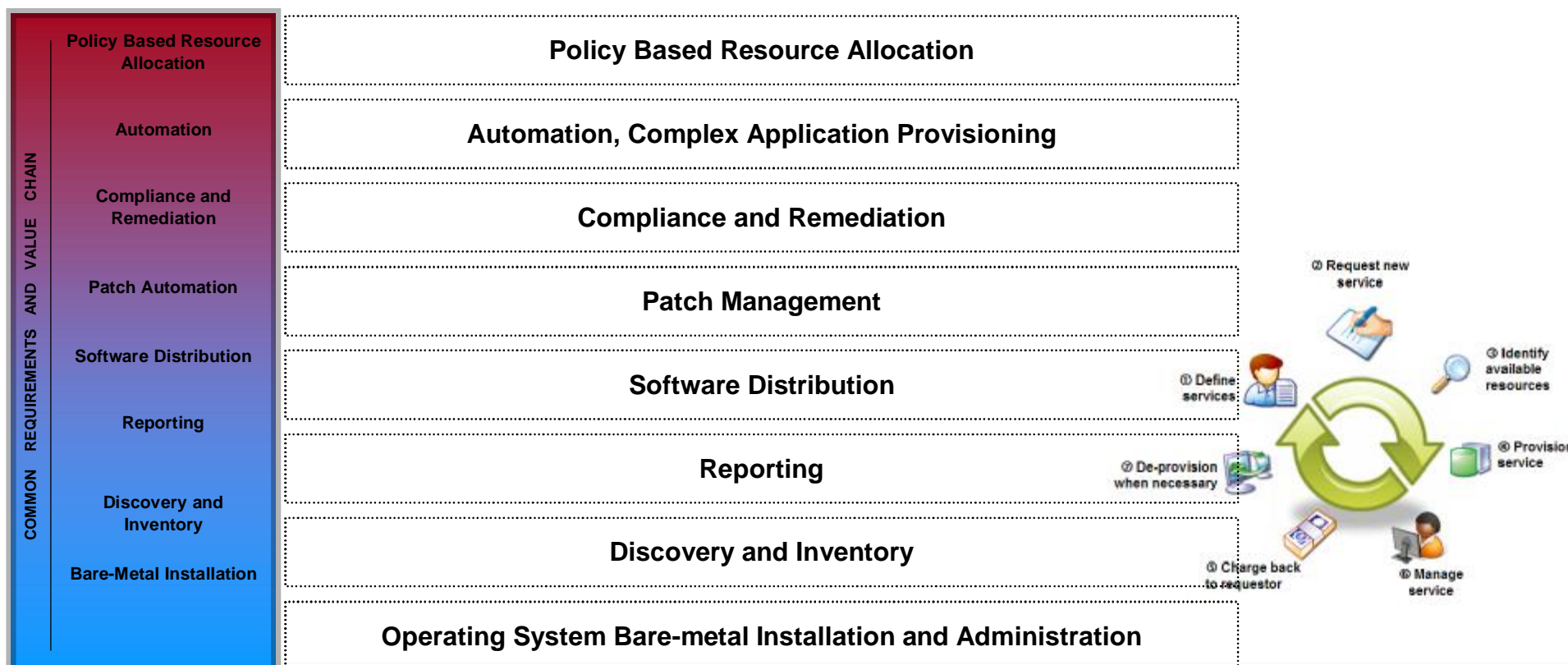
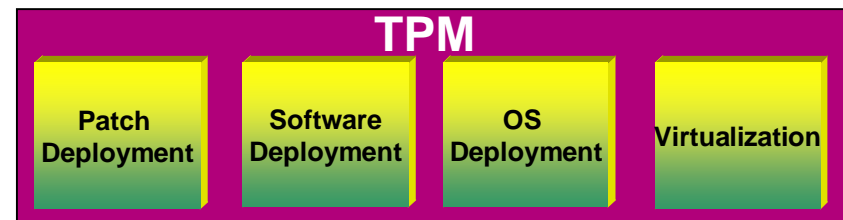
服务请求管理



基于流程的服务管理



自动化引擎



Tivoli数据中心自动化 服务引擎

基于Tivoli Provisioning Manager的自动化引擎

常见需求

基于策略的资源分配

自动设置复杂应用

制度遵从和错误补救

补丁管理

软件分发

报表

资产自动发现和管理

操作系统的裸机安装和管理

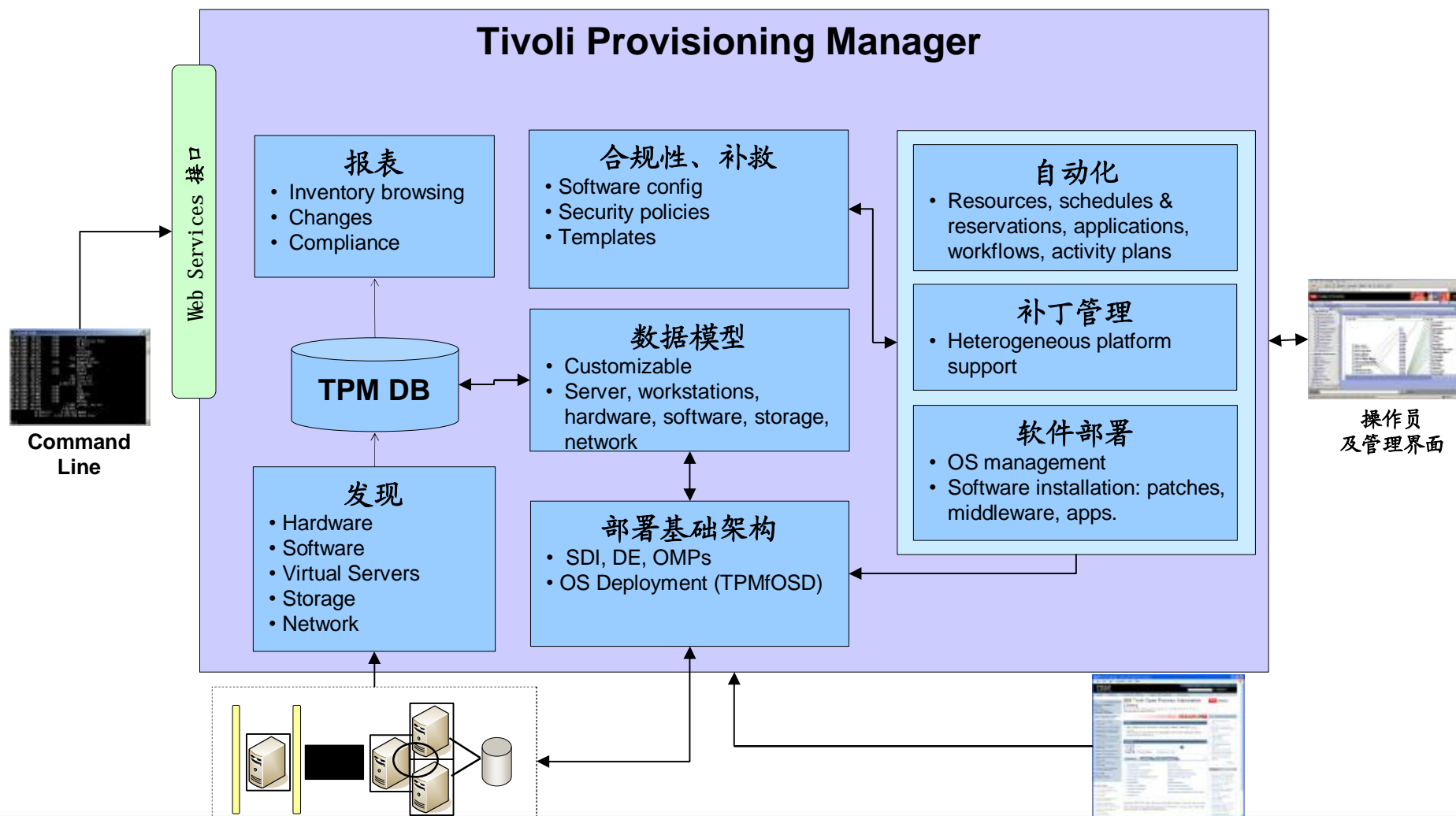
生命周期的流程化管理

Pulse

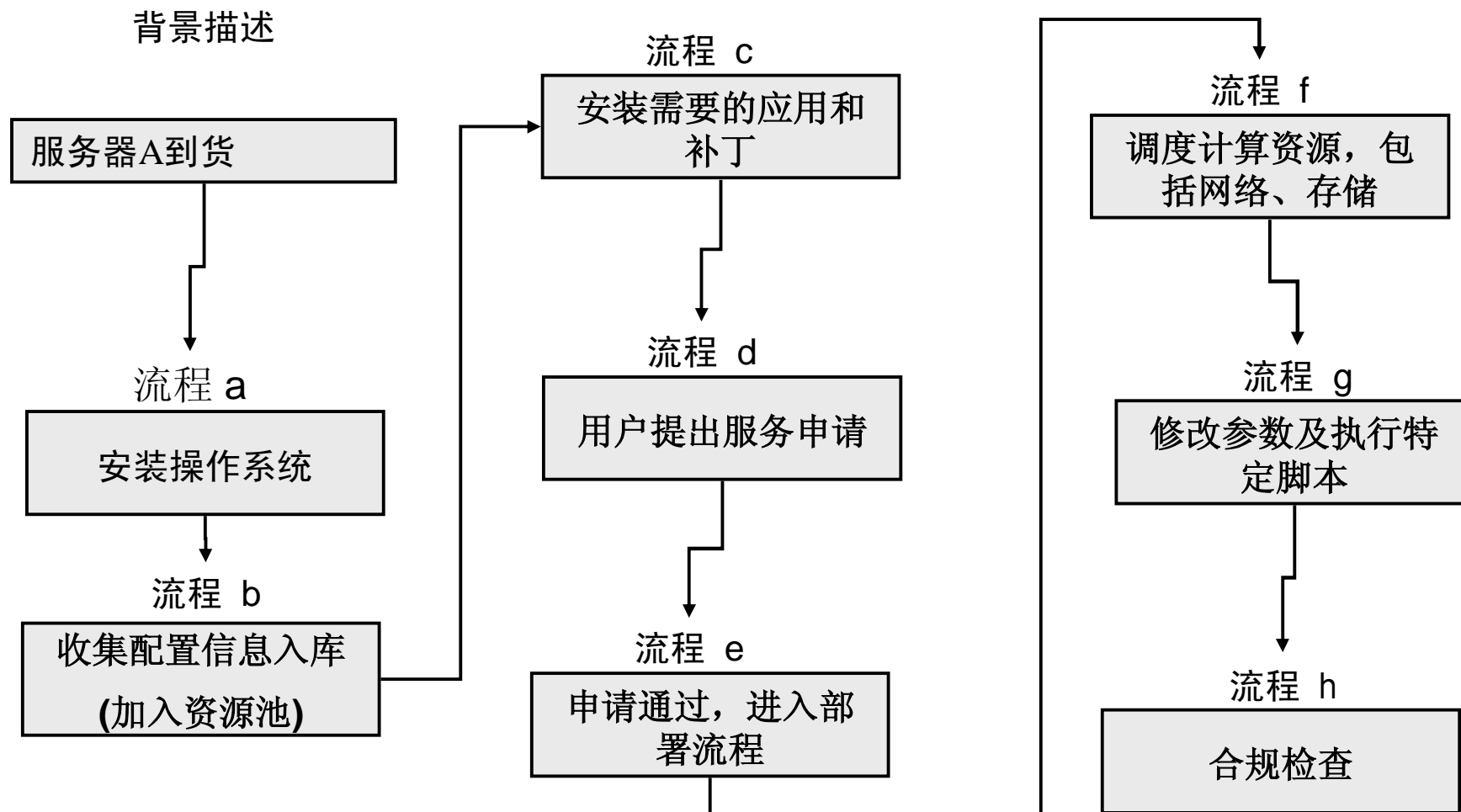
Comes to You 2009



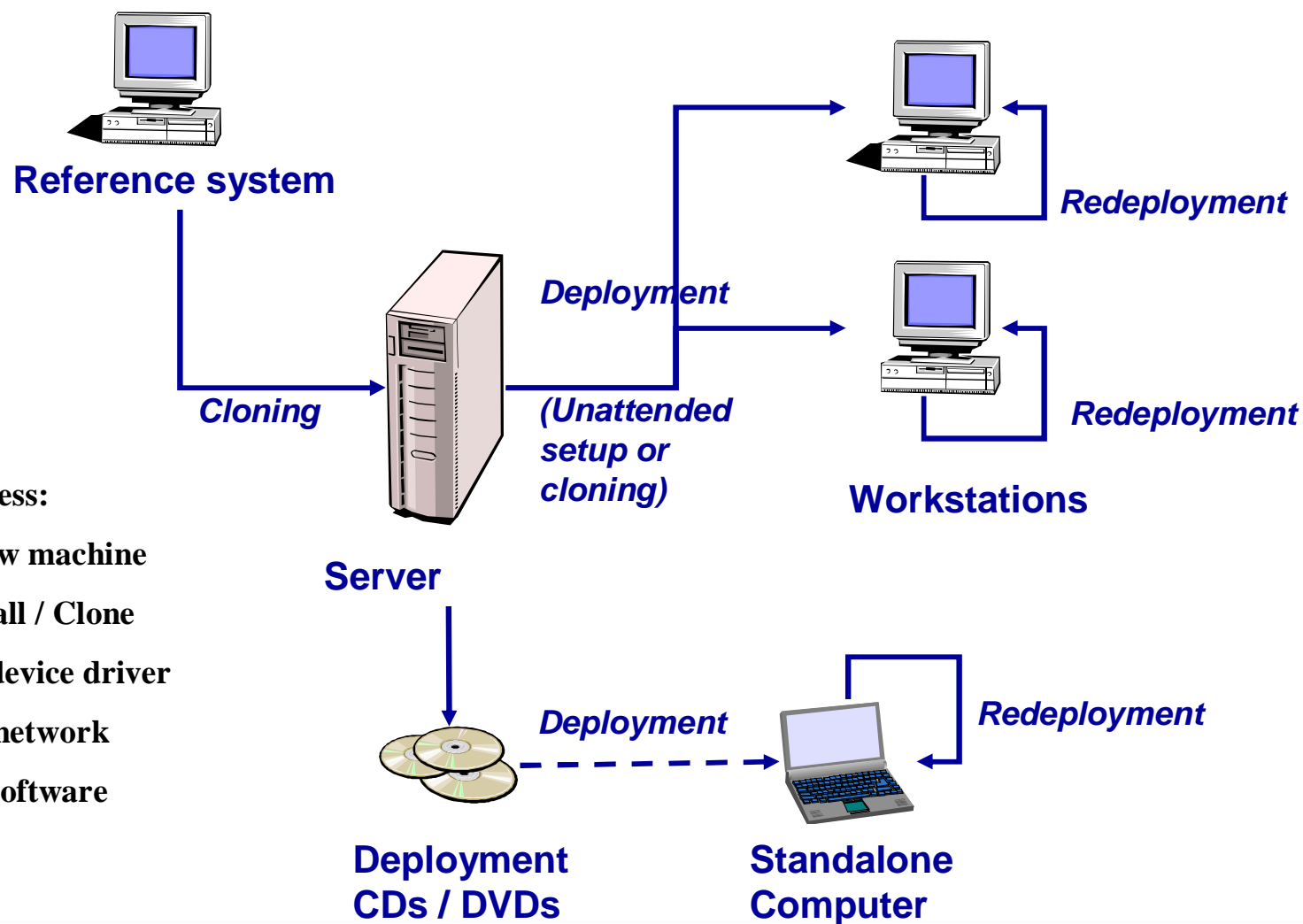
Tivoli Provisioning Manager的逻辑架构



数据中心服务器部署自动化举例



流程a: 部署服务器操作系统

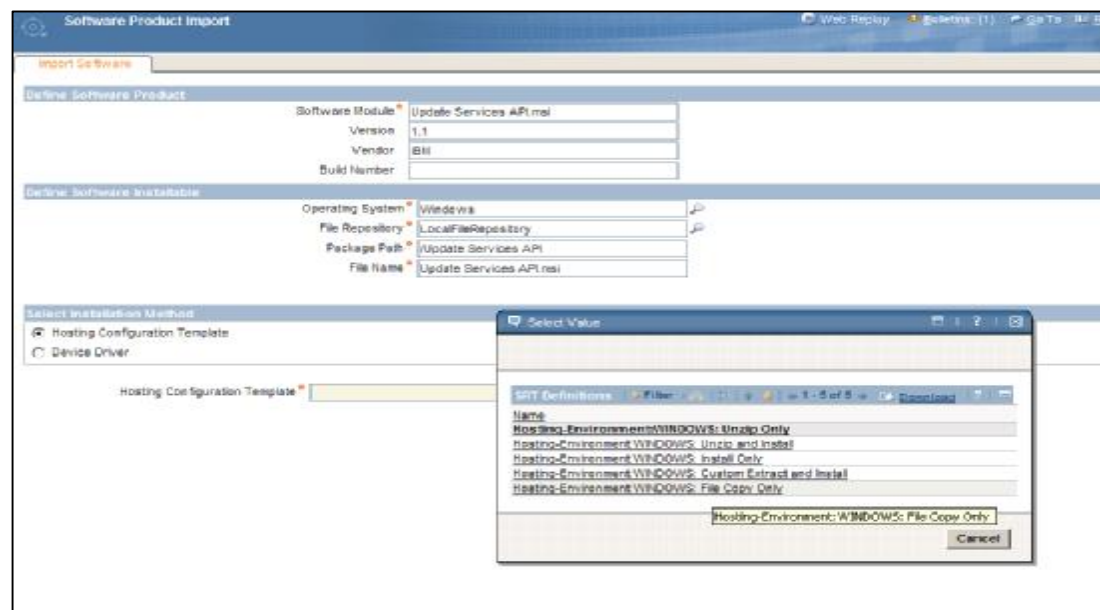


Deploy Process:

1. Boot new machine
2. OS install / Clone
3. Install device driver
4. Config network
5. Install software
6. ...

流程c: 软件和补丁自动部署

- 支持多种安装对象:
 - 补丁程序
 - 数据库
 - 中间件
 - 客户应用
 - 可以和Rational集成
- 客户化定制安装流程
- 确认检查



流程d:用户提出服务申请

新项目

1. 浏览可使用的基本系统并选择日期 2. 选择服务器并且配置软件 3. 提交请求

选定的日期

起始日期 05/28/2009 结束日期 05/31/2009 期间 3 days

完成输入新项目

项目名称: 客户:

描述:

你的虚拟机

Provisioning Computers Web Replay Bulletins: (0) Go To Reports Start Center Profile Sign Out Help IBM

Find: Select Action

List **Computer** Hardware Software Compliance Recommendations Credentials Workflows Variables Deployment Properties

Computer*

Globally Unique Identifier

Configuration Item

Configuration Last Known Status

Management IP Address	<input type="text" value="9.26.71.2"/>	Operations	Framework	<input type="text" value="Scalable Distribution Infras"/>
Operating System	<input type="text" value="Windows Server 2003 En"/>		Agent	<input type="text" value="A9176D5FAD2430838320"/>
Computer Template	<input type="text"/>			
Locale	<input type="text"/>			
Details		Compliance	Security	<input type="text" value="7 issues"/>
Model Type	<input type="text"/>		Software	<input type="text" value="Configuration required"/>
Architecture	<input type="text"/>		Patches	<input type="text" value="Configuration required"/>
Serial Number	<input type="text"/>			
Manufacturer	<input type="text"/>			

Provisioning Groups Filter 1 - 1 of 1 Download Recent Discovery Scans Filter Download

Provisioning Group	Description	Type	Discovery	Scan Date
TPC Servers		Computer	<input type="text"/>	<input type="text"/>

Assign To Provisioning Group ...No rows to display...

流程e: 审批通过

The screenshot displays the IBM Pulse Provisioning Configuration Librarian interface. The top navigation bar includes options like 'Welcome, MAXADMIN', 'Web Proxy', and 'Reports'. The main content area is divided into several sections:

- Discovery and task applications:** Includes Discovery Configurations, Patch Acquisition, and Provisioning Task Tracking.
- Data model applications:** Includes Provisioning Computers, Virtualization Management, Provisioning Groups, Software Products, Software Configuration Templates, and Patches.
- Networking applications:** A category for network-related tasks.
- Infrastructure applications:** A category for infrastructure-related tasks.
- Bulletin Board:** A table showing system messages.

Subject	Message	Post Date	Expiration Date	Viewed?
BIXAA4030E - All users will be logg...	BIXAA4037E - Please save your work and s...	09/09/09 22:40	09/09/09 22:40	N
BIXAA4030E - All users will be logg...	BIXAA4037E - Please save your work and s...	09/09/09 22:38	09/09/09 22:35	N
- My favorite reports:** A list of reports with descriptions such as 'How many servers are installed with which operating systems?' and 'What are the server details, including networking and other resource details?'. A 'Set Graph Options' link is provided.
- Status of my recent provisioning tasks:** A table showing the status of recent tasks.

Task	Status
testDisc_3631	Success
testDisc_3629	Success
testDisc_3627	Success
testDisc_3624	Success
testDisc_3622	Success
- Data model object finder:** A table listing various object types and their names.

Object Type	Name
DEVICE_MODEL	SoftwareSimulator_Class
COMPUTER_GROUP	Favorite Computers
GROUP	Favorite Software
DEVICE_MODEL	Deployment Engine Serv
DEVICE_MODEL	SSH Service Access Po
DEVICE_MODEL	SNMP V1 Service Acces
DEVICE_MODEL	FTP Service Access Poi
DEVICE_MODEL	Telnet Service Access P
DEVICE_MODEL	Telnet_TS Service Acces
DEVICE_MODEL	Stack Of Patches

Automation development applications

- Provisioning Workflows
- Provisioning Computers
- Provisioning Task Tracking
- Activities and Tasks
- Actual Configuration Items

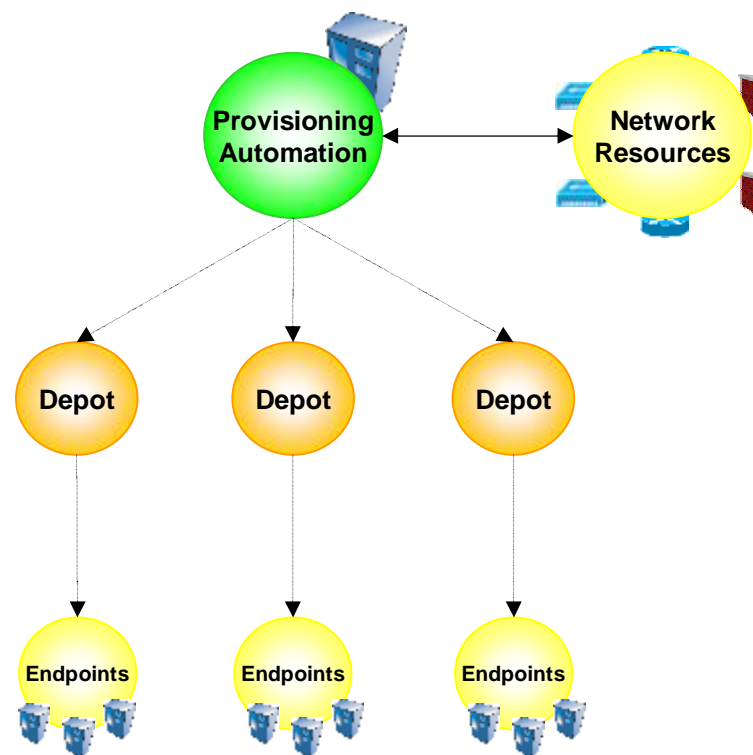


流程f: 部署资源

基于经过测试的流程来实现对于虚拟运行环境、中间件和应用软件的自动部署

1. 对虚拟资源进行分配
2. 执行中间件和应用的安装程序
3. 增加必要的存储并配置合适的虚拟服务器IP设置
4. 配置合适的路由器、交换机和路由器
5. 配置负载均衡器并将虚拟服务器加入生产系统

采用已有的程序和脚本及软件分发技术，实现端到端的自动化解决方案



Windows/Linux
(RDM - ADS - Kickstart)

AIX
(NIM/CSM)

Sun Solaris/HP-UX
(Jumpstart - Ignite)



支持虚拟化系统

Logical Operations



	Discovery	Create	Destroy	Manage						Configure
VIRTUALIZATION TECHNOLOGY - VMWARE				Start	Stop	Pause	Reboot	vMotion	Clone	Resources
VMWare Virtual Infrastructure 3	ü	ü VM	ü VM	ü	ü	ü	ü	ü	ü	ü VM



	Discovery	Create	Destroy	Manage				Configure
VIRTUALIZATION TECHNOLOGY - AIX LPAR				Start	Stop	Pause	Reboot	Resources
Power5	ü	ü LPAR	ü LPAR	ü	ü	°	ü	ü
Power4	ü	ü LPAR	ü LPAR	ü	ü	°	ü	ü



	Discovery	Create	Destroy	Manage				Configure
VIRTUALIZATION TECHNOLOGY - AIX WPAR				Start	Stop	Pause	Reboot	Resources
AIX 6.1	ü	ü	ü	ü	ü	°	ü	ü



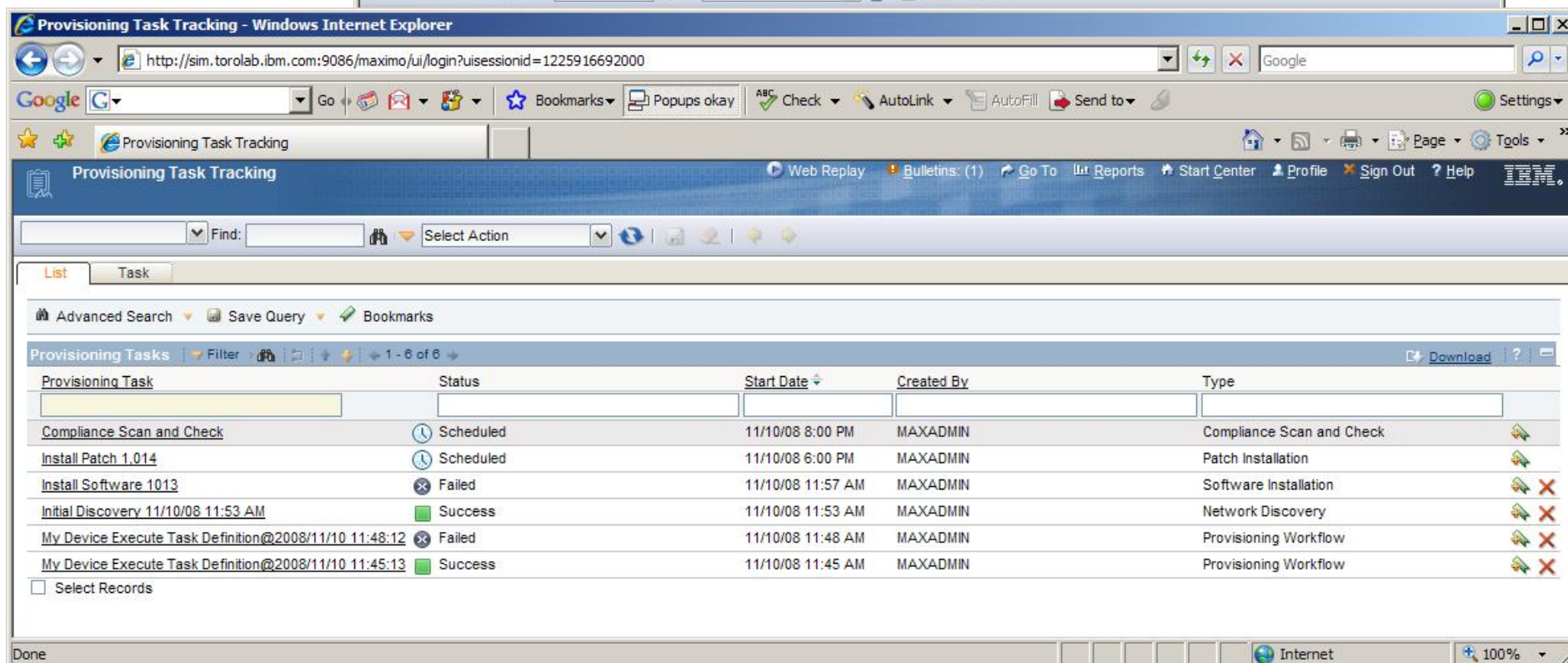
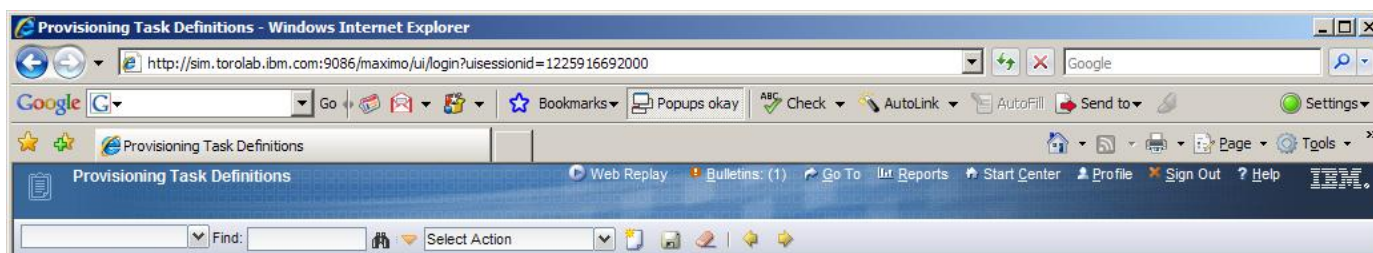
	Discovery	Create	Destroy	Manage				Configure
VIRTUALIZATION TECHNOLOGY - Solaris Zones				Start	Stop	Pause	Reboot	Resources
Solaris 10	ü	ü	ü	ü	ü	°	ü	ü



	Discovery	Create	Destroy	Manage				Configure
VIRTUALIZATION TECHNOLOGY - Xen				Start	Stop	Pause	Reboot	Resources
Linux (Redhat, SuSE ...)	ü	ü	ü	ü	ü		ü	ü



流程g: 修改配置、执行脚本



流程h: 合规检查

Provisioning Computers

Find: Select Action

List Computer Hardware Software **Compliance** Recommendations Credentials Workflows Variables Deployment Properties

Compliance Scan

Computer:

Status:

Enable Automatic Approval

Compliance recommendations are not approved automatically

Run Schedule

No scheduling options were specified. Click Schedule to change these options

All Configured Checks Security Checks Software Checks Allowed Software Software Configuration Checks Notification Setup

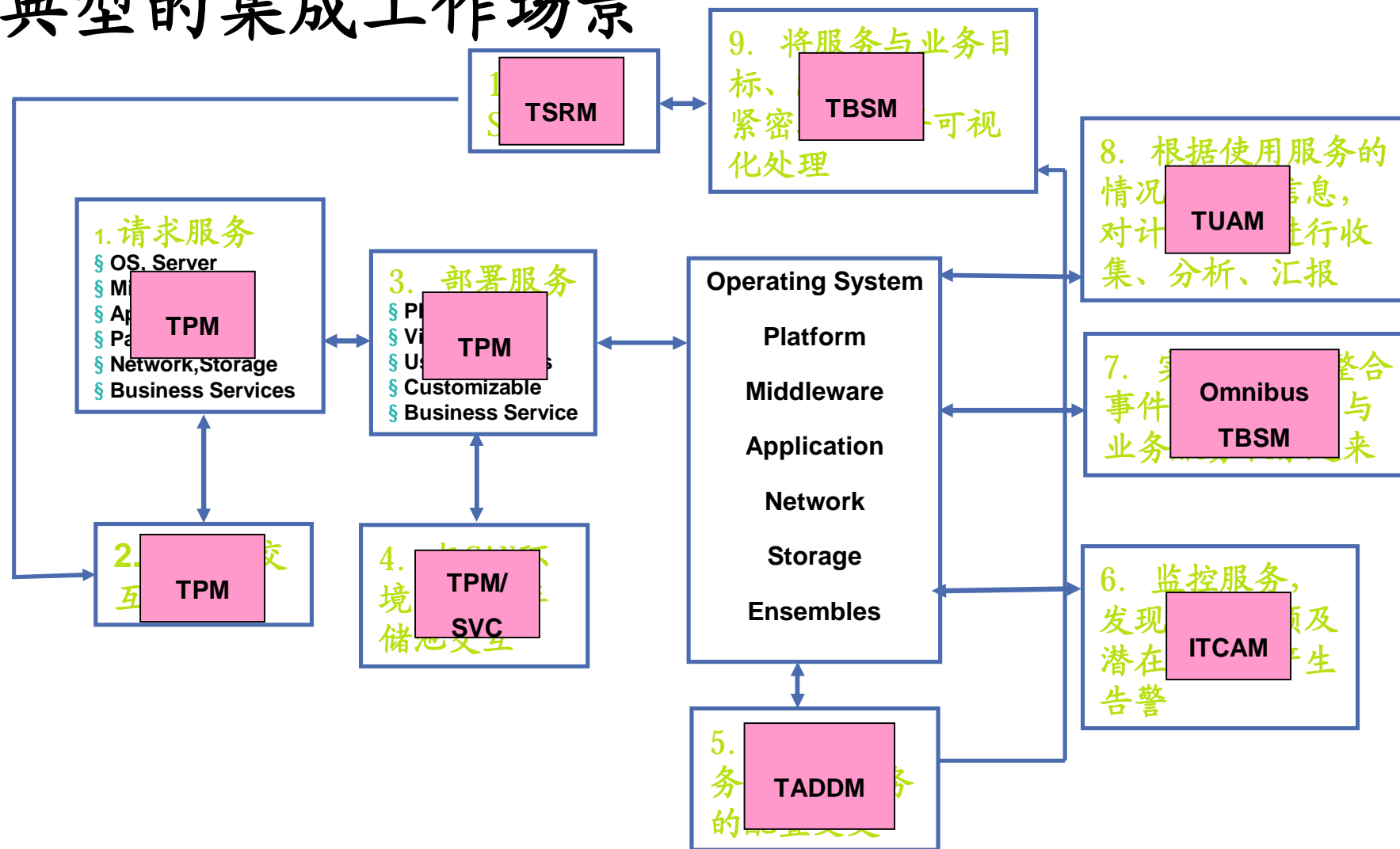
Compliance Checks Filter Download ?

Compliance Check	Type	Group	Last Scan	Compliant
...No rows to display...				

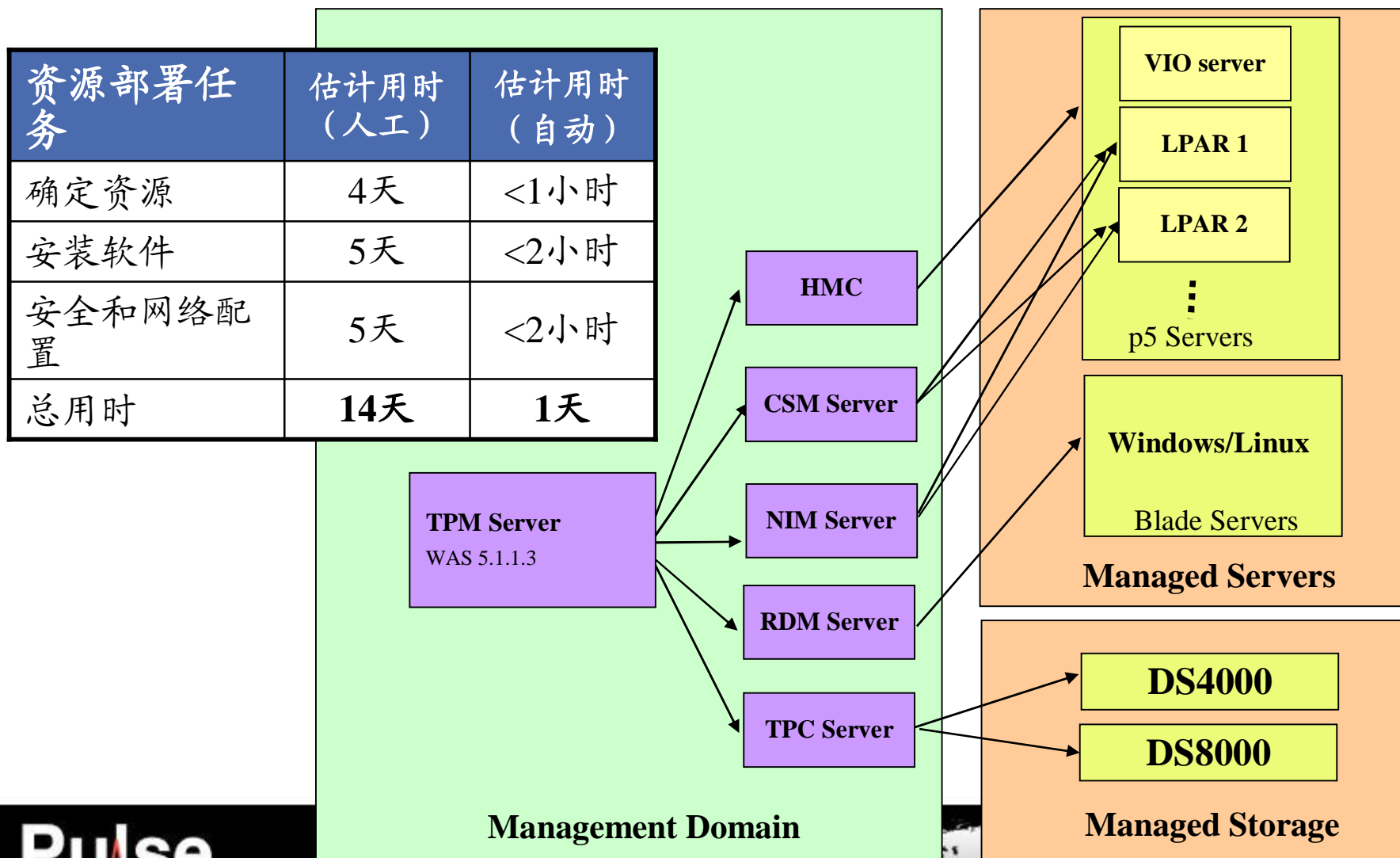
Copy Checks New Checks from Model Computer New Compliance Check



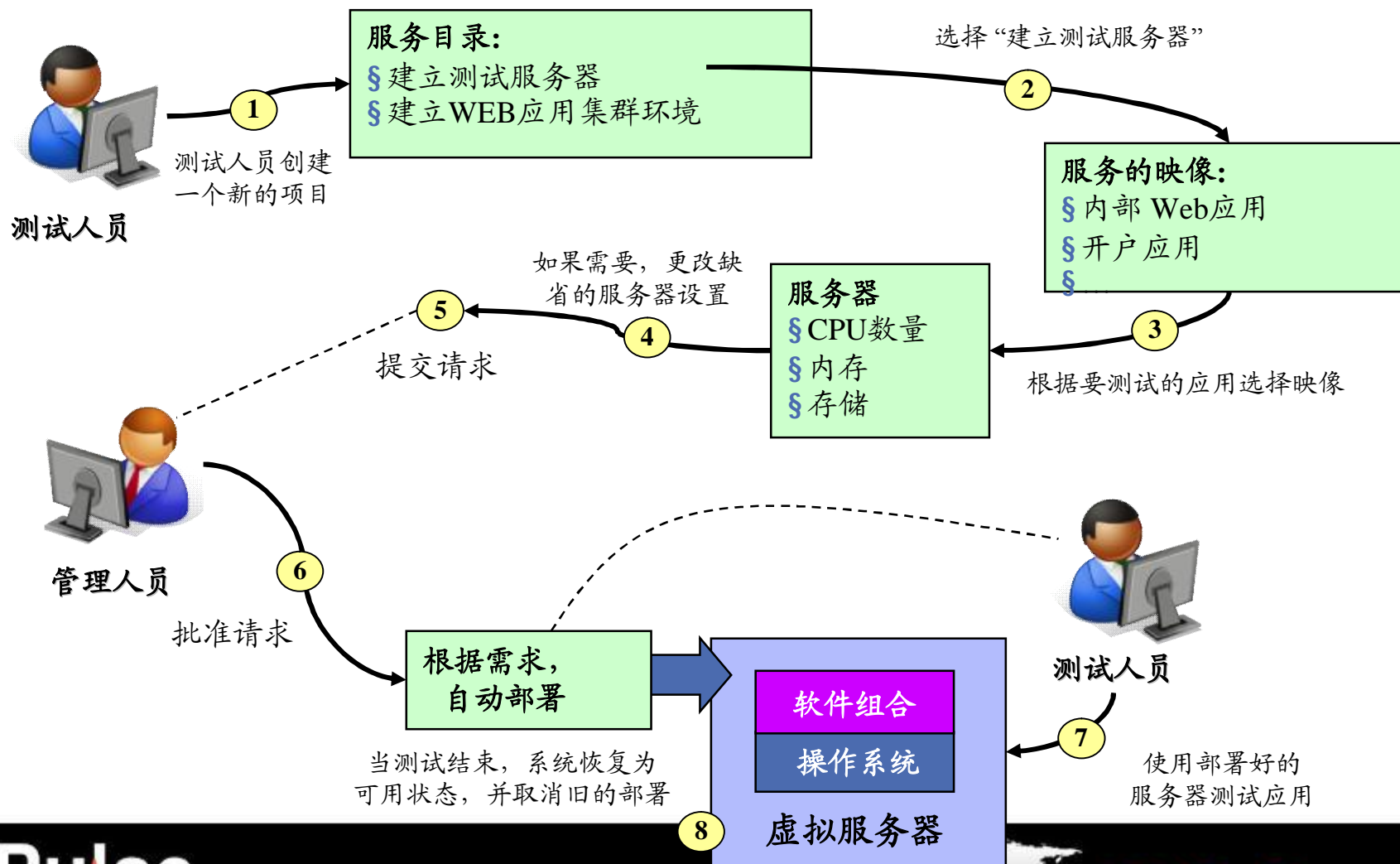
典型的集成工作场景



案例：自动化的资源部署的价值评估



案例：提供一个测试环境的服务



为何IBM?

- 唯有IBM提供完整端到端的服务管理解决方案，基于一个通用的流程自动化引擎，交付一个与Tivoli管理工具完全集成的完整流程。
- 支持云计算、虚拟系统和绿色计算，全面提升数据中心的自动化水平。
- 基于服务流程驱动，藉由流程来提升自动化管理能力。



Thank You

Pulse

Comes to You 2009

