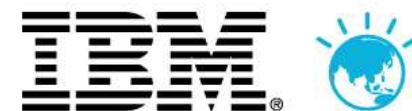


IBM Rational 软件创新论坛



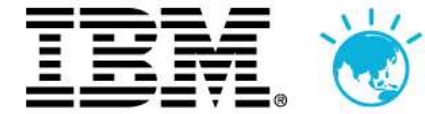
Let's **build** a
smarter planet.

开发有道
创新“智”造

Innovate**2010**



需求管理主题演讲



Andrew Foster

产品经理 — 需求定义 & 管理

andrew.foster@uk.ibm.com



Innovate2010

日程安排

- 概述
- 需求的背景与内涵
- 战略与产品路线图
- 展望未来
- 创新和需求管理



免责声明

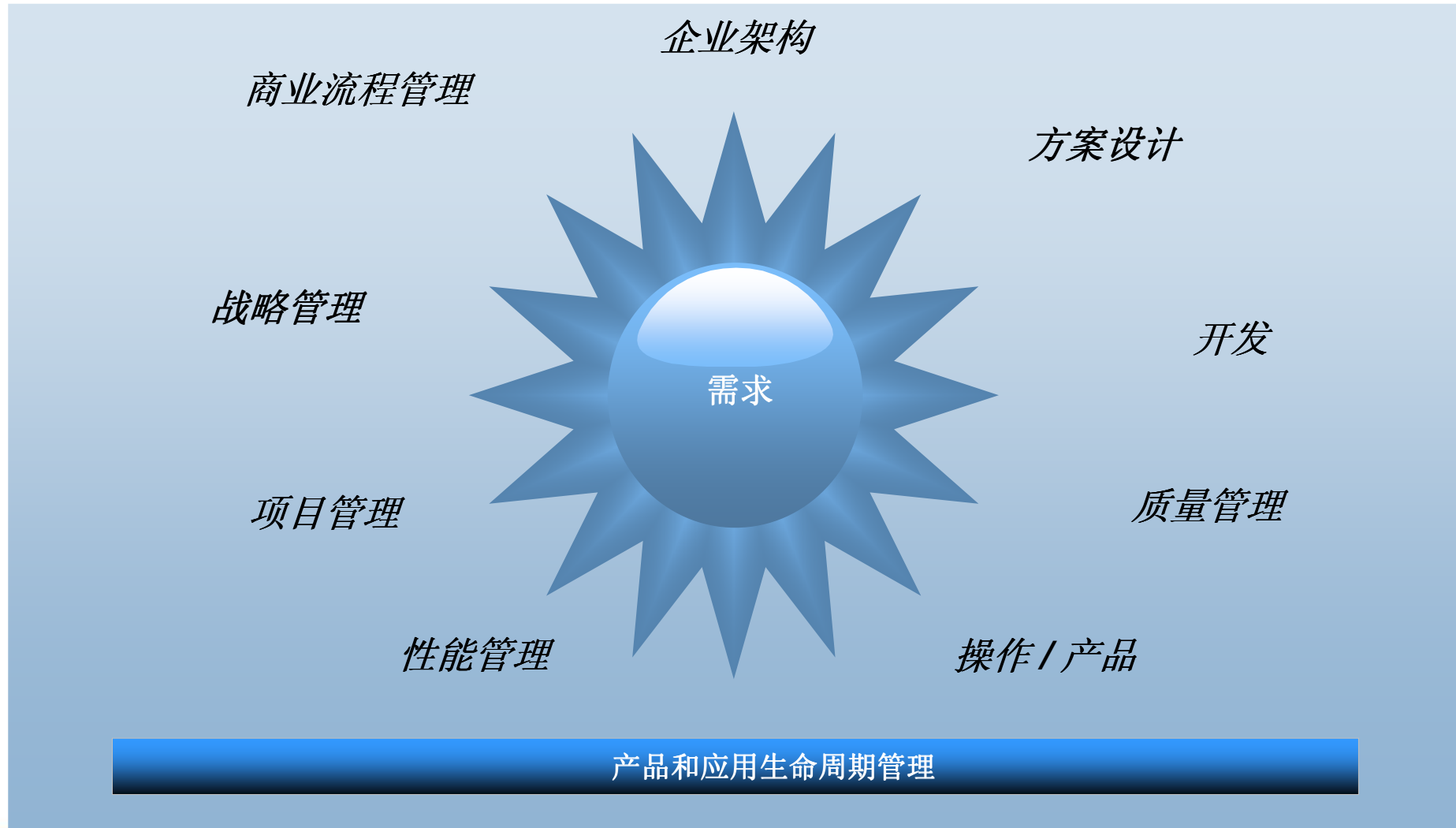
- 基于现有信息，未来可能存在变化

© Copyright IBM Corporation 2010. All rights reserved. These materials are intended solely to outline our general product direction and should not be relied on in making a purchasing decision. Information pertaining to new product is for informational purposes only, is not a commitment, promise, or legal obligation to deliver any material, code or functionality, and may not be incorporated into any contract. The development, release, and timing of any features or functionality described for our products remains at our sole discretion. Nothing contained in these materials is intended to, nor shall have the effect of, creating any warranties or representations from IBM or its suppliers or licensors, or altering the terms and conditions of the applicable license agreement governing the use of IBM products. IBM, the IBM logo, Rational, the Rational logo, Telelogic, the Telelogic logo, and other IBM products and services are trademarks of the International Business Machines Corporation, in the United States, other countries or both. Other company, product, or service names may be trademarks or service marks of others.

为什么要做需求管理?

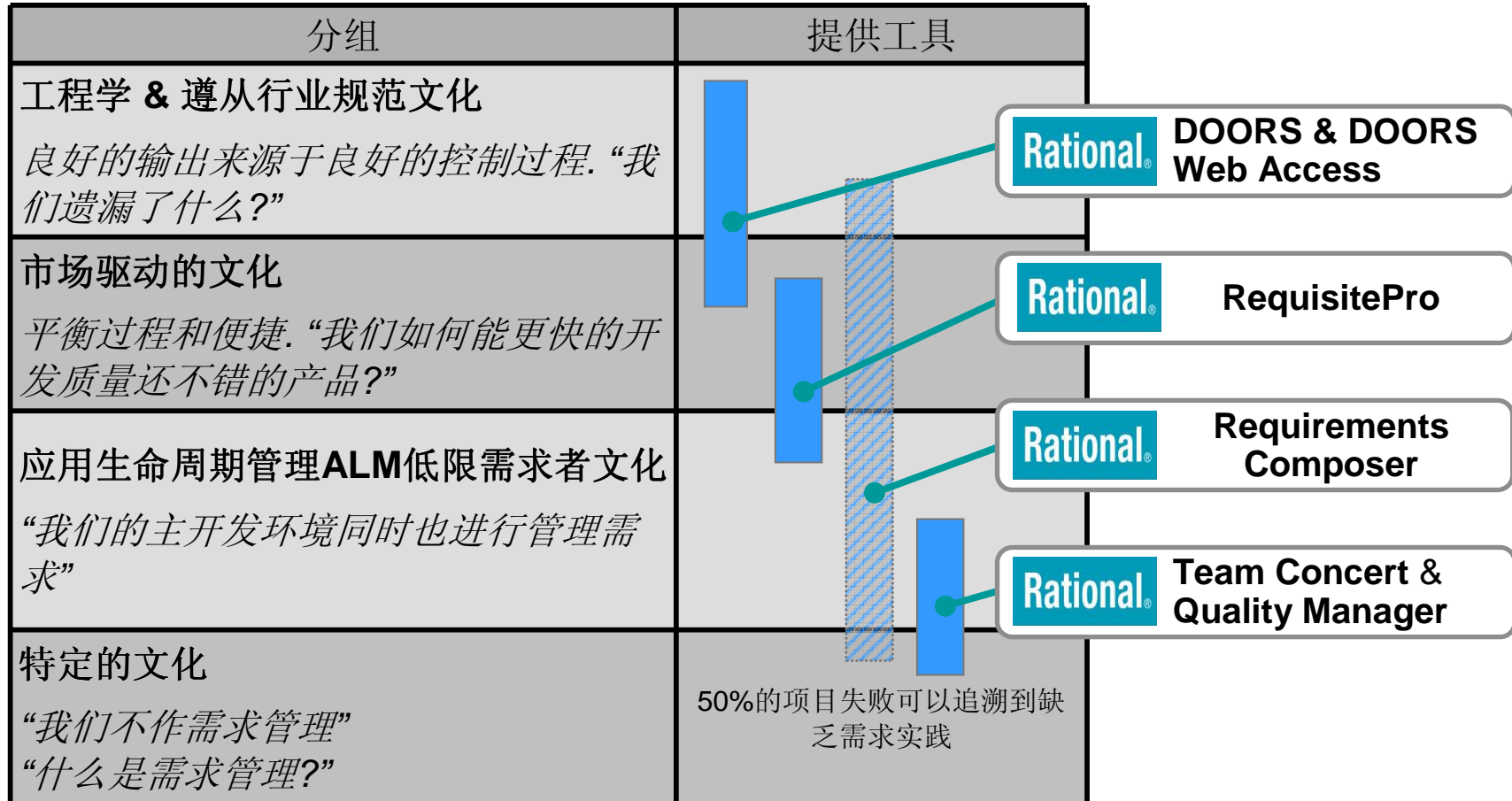


需求无处不在、无所不及



Rational 当前的需求管理部署

针对不同文化和不同要求



Rational 需求管理策略

发布市场领先的配置管理工具及实践

- 适应所有需求管理文化，包括工程学与遵从行业规范文化以及市场驱动的文化。

培育需求管理生态环境

- 帮助合作伙伴和客户在需求平台提供增值能力

创新以保护客户投资

- 通过通用产品家族提交下一代产品能力
- 后向兼容，平滑迁移，以支持产品转换

一切都基于 *Jazz* 的服务与哲学

- Jazz 是一个软件与系统交付支撑平台
- 业务导向的工具，松耦合的集成方式，保证跨工具的工作流更加高效和灵活



Jazz 提供了开发生命周期的基础



需求管理战略实现最近举措

2008



收购Telelogic / DOORS

- ▶ 需求管理行业领先工具

2009



Requirements Composer 1.0

- ▶ 协作的请求定义
- ▶ 图文标注
- ▶ 未来交付的基石



RequisitePro 7.1.1

- ▶ Package 级别安全保障
- ▶ ReqWeb 增强

2010



DOORS 9.2 / DWA 1.3

- ▶ 需求交换格式 (RIF)
- ▶ DOORS Web Access Edit
- ▶ 与Rational Quality Manager 集成
- ▶ IBM-ized DOORS, Chinese/Japanese NLS



Requirements Composer 2.0

- ▶ 集合, 快照, 视图
- ▶ 性能, 操作性
- ▶ 通用报告模块
- ▶ Reviewer Web 客户端
- ▶ 通过RTC/RQM支持ALM协作



RequisitePro “getting info out”

- ▶ Rational Publishing Engine生成文档
- ▶ Rational Insight 生成dashboards

Innovate2010

Let's build a smarter planet.



需求管理集成方面的最新改进

2009

2010

2011+



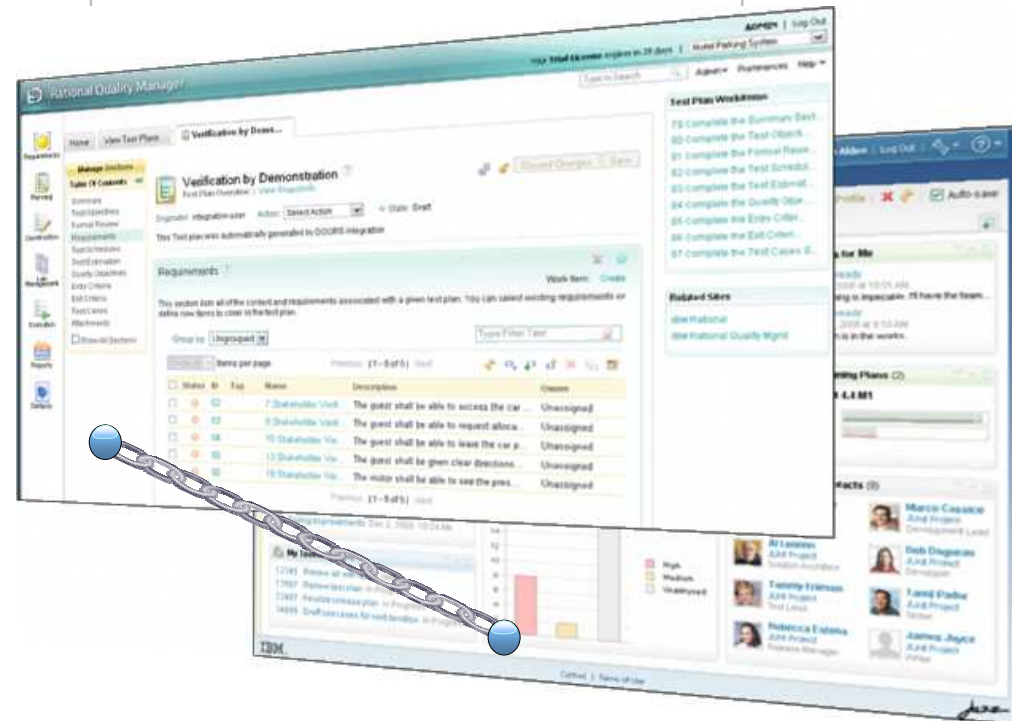
DOORS 9.2

- ▶ Rational Quality Manager v2.0 (pictured)
- ▶ RRC v2.0
- ▶ Rational Insight 使用 RIF 输出
- ▶ HP QualityCenter v10

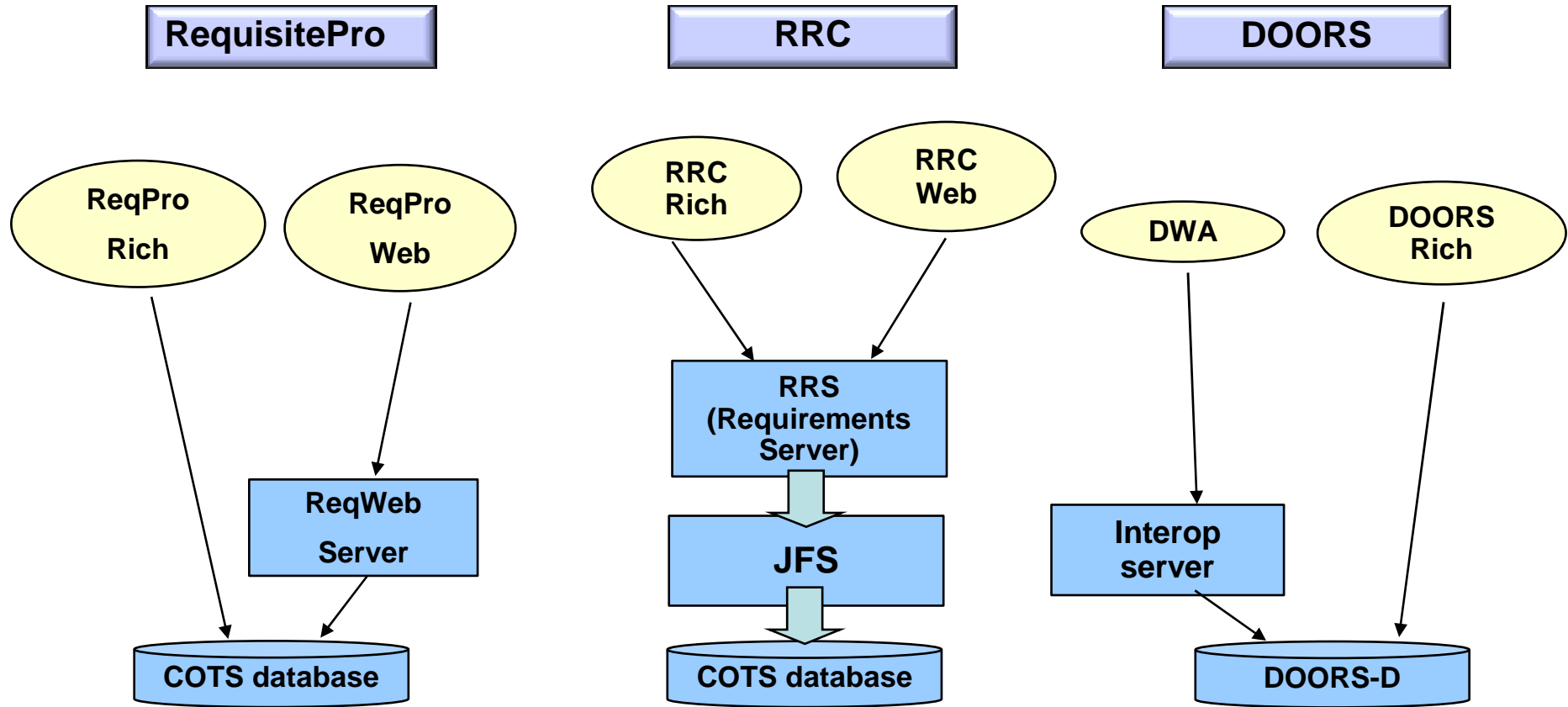


RRC 2.0

- ▶ DOORS 9.2
- ▶ RequisitePro
- ▶ Rational Software Modeller
- ▶ Rational Software Architect
- ▶ CALM 2009 (与RTC/RQM)



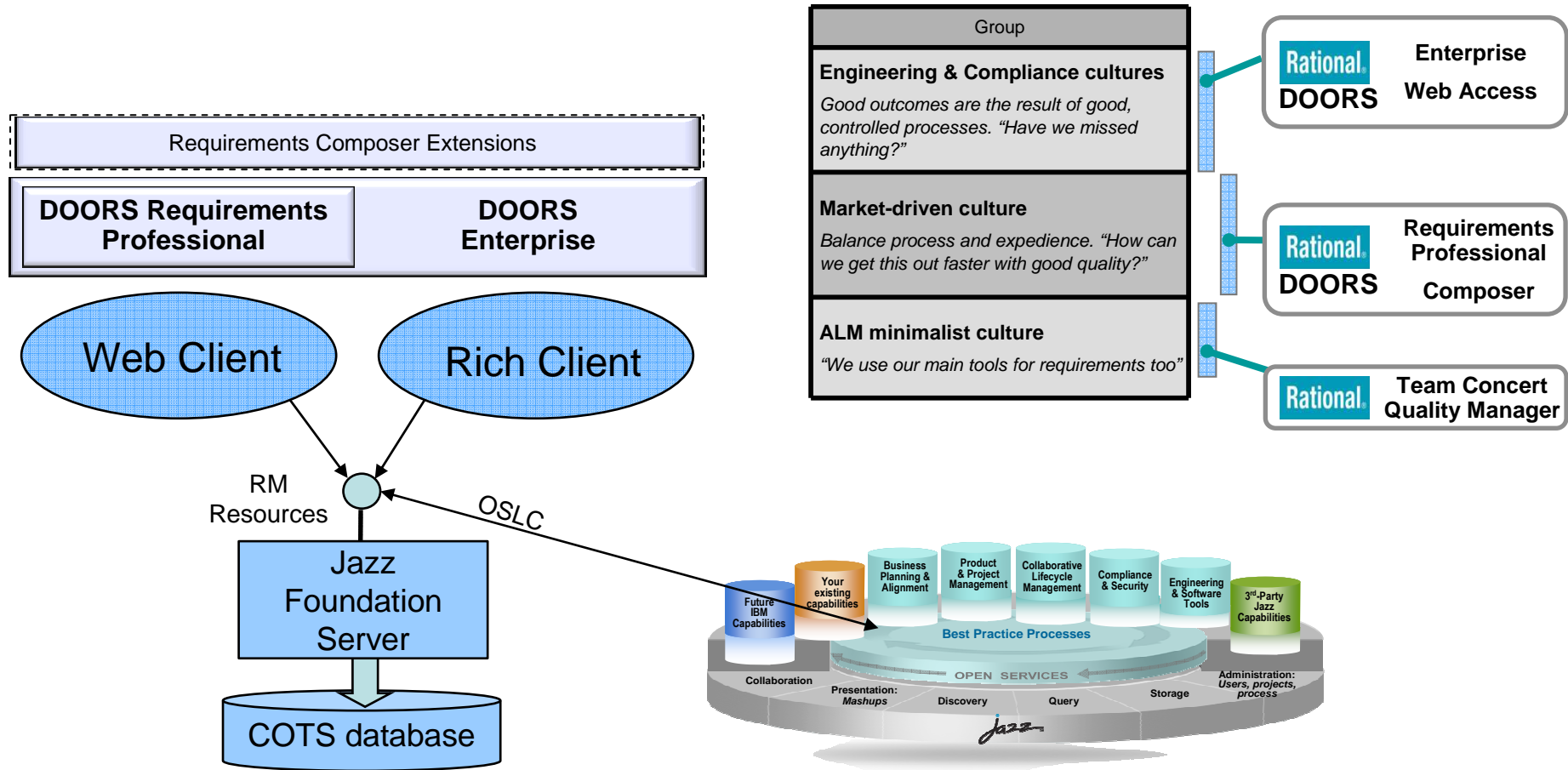
目前的高层架构



三个独立产品
六个需求客户端

三个独立的知识库
明显重叠

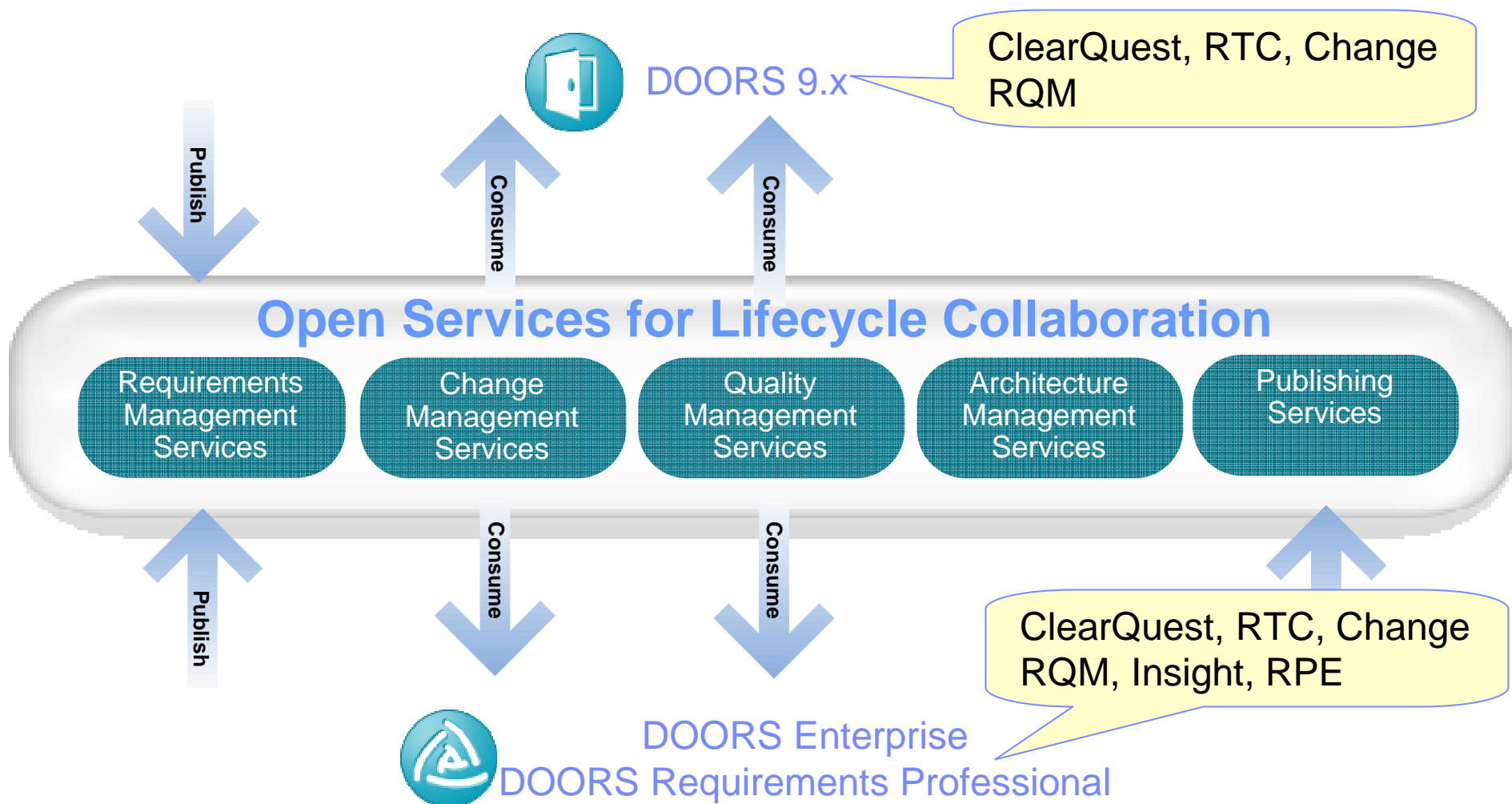
展望未来: 长期目标架构



单一产品线
单一Web客户端

单一服务器
互操作能力

OSLC 集成战略 – 生成通用集成



2010 新增: DOORS 与 DOORS Web Access



2009

2010

2011+

DOORS 9.x

- ▶ RTC, ClearQuest, Change 通过 OSLC-RM 以及 OSLC-CM 集成
- ▶ 通过通用报告模块内置文档生成
- ▶ 新增语言: 德语, 法语, 俄语
- ▶ SSL 支持基于证书的鉴权 (CAC/PKI)

DOORS Web Access 1.x

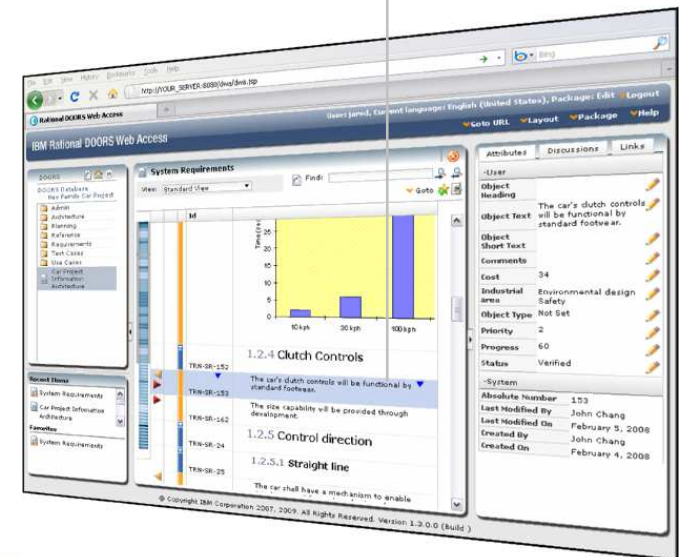
- ▶ 增强的过滤器促进分析/审查
- ▶ OSLC, 与服务器端集成
- ▶ UI 保持与IBM Rational Jazz 客户端一致

“DOORS on Jazz” 技术预览

- ▶ 通用的基于Jazz 的需求服务器
- ▶ COTS 开箱即用的数据库

“与Jazz集成”

“构建于Jazz”



2010 新增: DOORS Requirements Professional 及 Requirements Composer



2009

2010

2011+

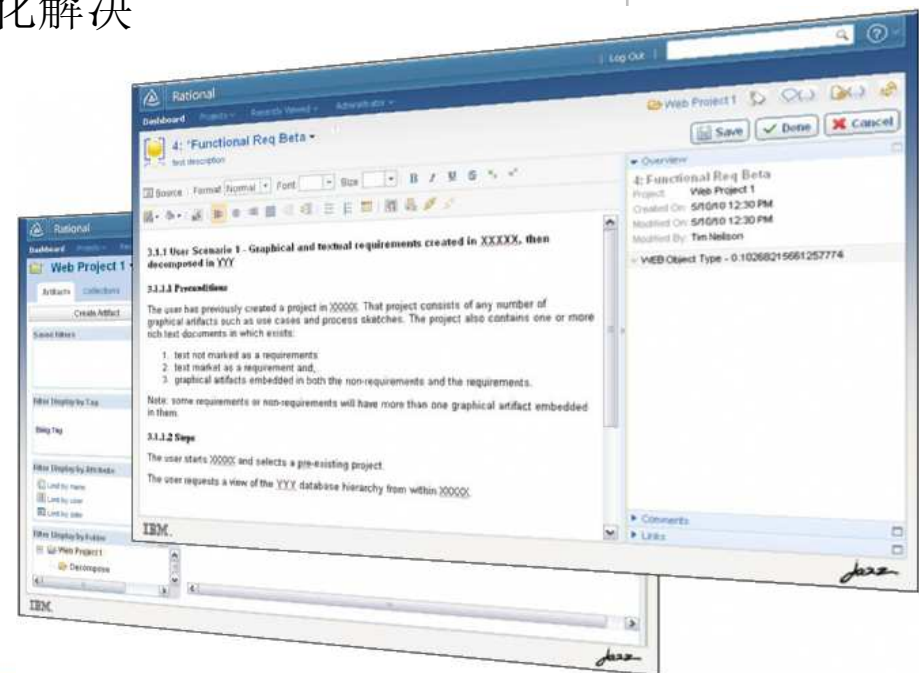
DOORS Requirements Professional

- ▶ Web based/Zero footprint
- ▶ 下一代的 RequisitePro
- ▶ 需求管理与Business Analyst市场驱动文化解决方案
- ▶ 需求, 可追踪性, 主题, 和分析
- ▶ 通用基于Jazz 的需求服务器

Requirements Composer (RRC)

- ▶ 增强的性能表现与可用性

RequisitePro 用户首选迁移目标



2011 增强: DOORS Enterprise



2009

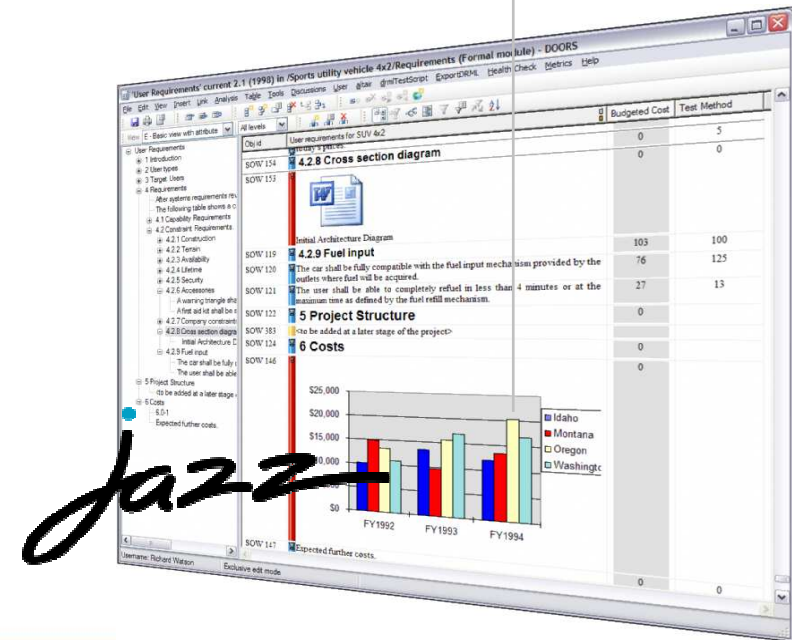
2010

2011+

DOORS Enterprise

- ▶ Jazz之上构建DOORS 服务器
 - ▶ 支持商业数据库
 - ▶ 关注于性能, 响应以及实用性
- ▶ 与其他Jazz产品的需求互操作性
 - ▶ 和RTC, RQM, RSA等共享需求
- ▶ RM产品之间共享模块
 - ▶ 项目级属性/类型管理
 - ▶ Dashboard viewlets
 - ▶ Jazz 协作
 - ▶ 需求 workflows
 - ▶ 通用报告模块

“构建于
Jazz”



2011 增强: DOORS Requirements Professional, Requirements Composer 以及 DOORS Web Access



2009

2010

2011+

DOORS Requirements Professional

- ▶ 安全模块和管理
- ▶ Marquee 能力(e.g. 图形化追踪)
- ▶ 需求 workflow

Requirements Composer (RRC)

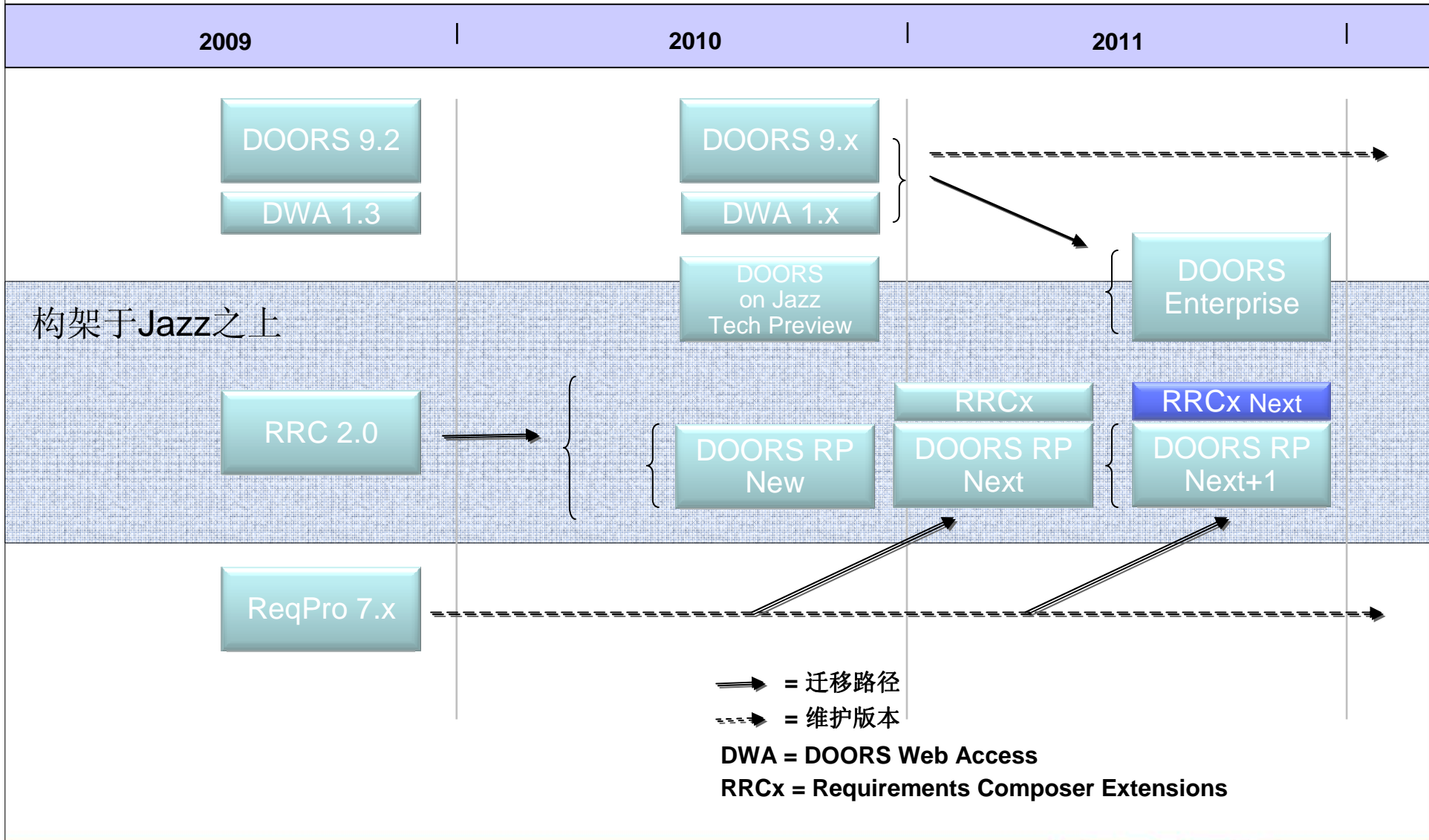
- ▶ 在DOORS RP之上提供RRC 支持
- ▶ 基于Web/Plug-ins

DOORS Web Access

- ▶ 通过DOORS RP提供
- ▶ 通用Web 技术需求访问

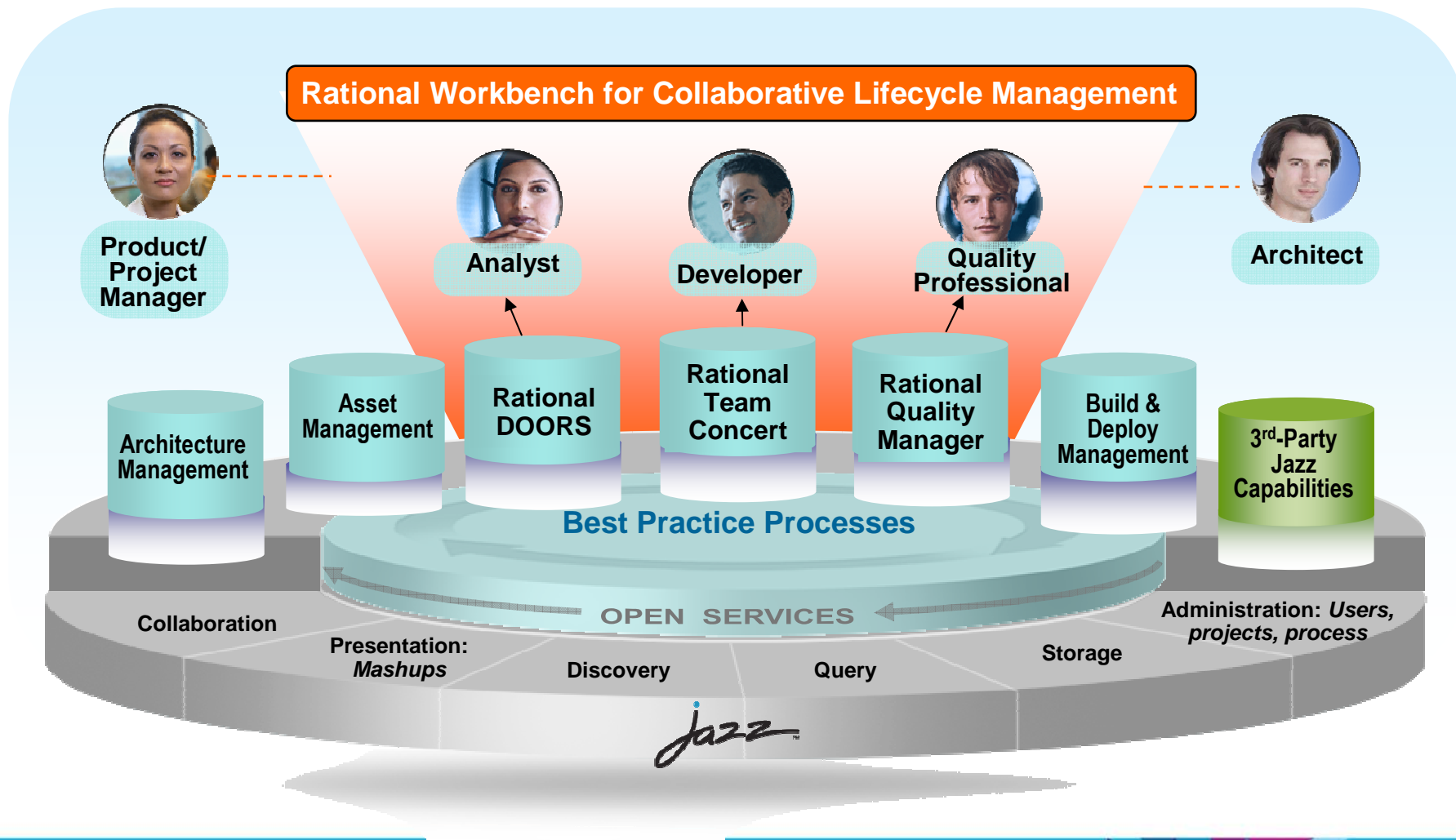


RM 路线图



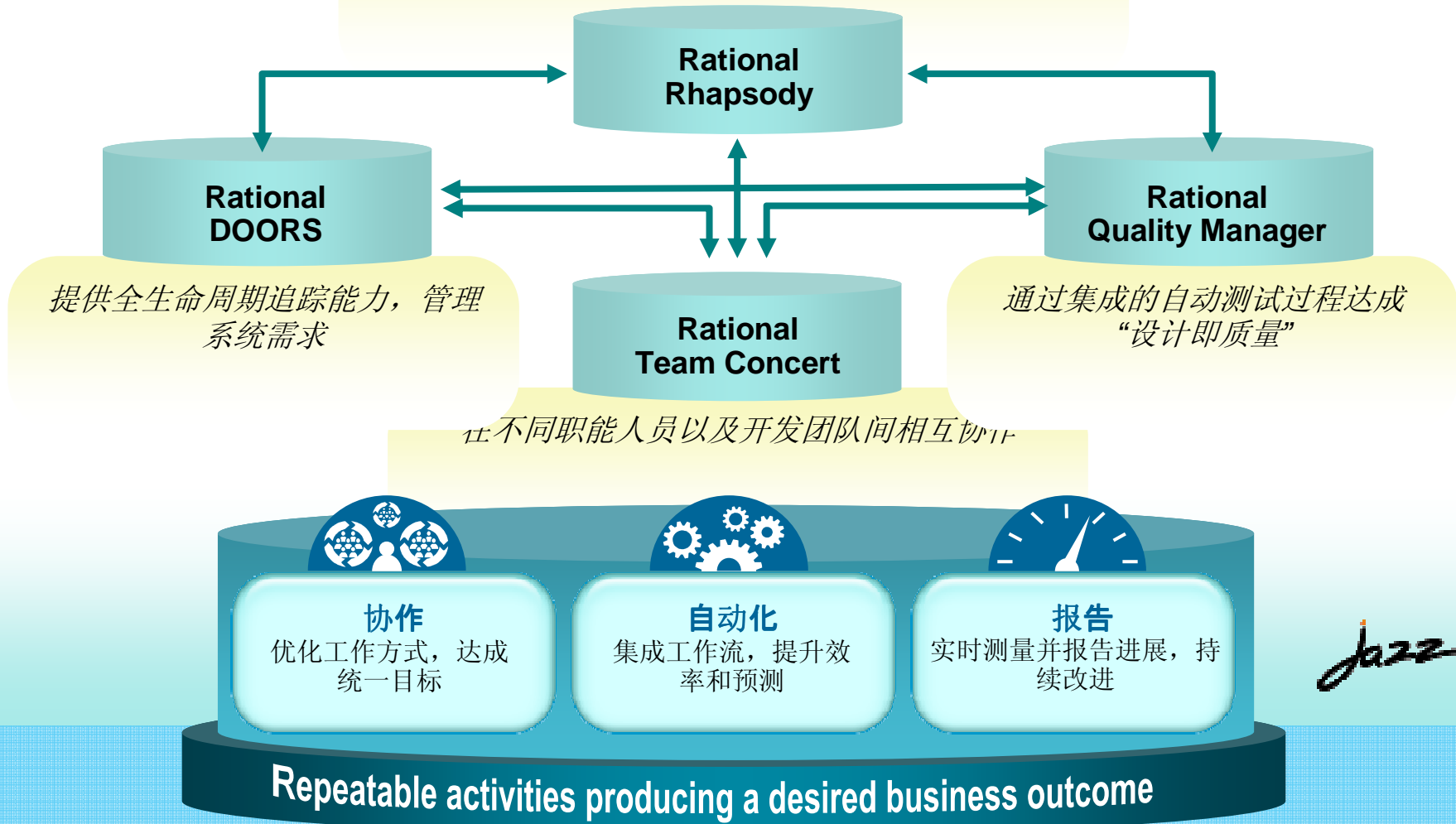
IBM 提供协作的生命周期管理工作台

健壮的, 可扩展的方案, 服务于分析师, 开发者和质量专家



Rational 系统和软件工程工作台

开发过程从始至终以建模验证需求，构架以及设计



IBM Rational 合作伙伴解决方案

RAVENFLOW

Validate business requirements visually for desired outcome



DOORS integration with ClearQuest



Provides software product line support for requirements management and software models

Rational.

DOORS



MDWorkbench is a powerful Eclipse-based IDE that can integrate RSA and DOORS

Rational.

Requirements Composer



Maximize the productivity and effectiveness of your DOORS users through enhanced traceability



Provide seamless connectivity between DOORS & project management systems

Rational.

RequisitePro



Eliminate risk of project failure with visual requirements definition through simulation



Seamlessly integrates DOORS with leading PLM solutions such as PTC Windchill®



Innovate2010

Let's build a smarter planet.



总结

- 需求管理: 对于生命周期开发成功至关重要
- 创新需求, 引入Jazz
- 节约、可持续性创新
- 现代化促使成功

Thank
you

www.ibm.com/software/rational

© Copyright IBM Corporation 2010. All rights reserved. The information contained in these materials is provided for informational purposes only, and is provided AS IS without warranty of any kind, express or implied. IBM shall not be responsible for any damages arising out of the use of, or otherwise related to, these materials. Nothing contained in these materials is intended to, nor shall have the effect of, creating any warranties or representations from IBM or its suppliers or licensors, or altering the terms and conditions of the applicable license agreement governing the use of IBM software. References in these materials to IBM products, programs, or services do not imply that they will be available in all countries in which IBM operates. Product release dates and/or capabilities referenced in these materials may change at any time at IBM's sole discretion based on market opportunities or other factors, and are not intended to be a commitment to future product or feature availability in any way. IBM, the IBM logo, Rational, the Rational logo, Telelogic, the Telelogic logo, and other IBM products and services are trademarks of the International Business Machines Corporation, in the United States, other countries or both. Other company, product, or service names may be trademarks or service marks of others.

Innovate2010

Let's build a smarter planet.

