

# Automate smarter with Web Replay from IBM Tivoli software.



## Highlights

- Capture complex provisioning user tasks electronically so they can be reused again and again
- Further automate provisioning tasks in data centers and distributed environments
- Leverage a library of pre-defined provisioning scenarios, to accelerate your use of Tivoli Provisioning Manager features
- Create custom scenarios to define how your organization should use Tivoli Provisioning Manager, fitting its capabilities to your internal procedures to meet your unique operational needs
- Facilitate training of new employees in how to use Tivoli Provisioning Manager and apply best practices
- Improve quality and increase productivity by automating mundane, repetitive or error-prone provisioning processes

Too much to do and not enough time to do it—it's a complaint heard in data centers and IT organizations around the world. To meet this challenge, IT organizations are looking for new ways to improve training and automate repetitive provisioning tasks, improving accuracy while saving time and money. That's why so many companies turn to IBM Tivoli® software for provisioning solutions.

IBM Tivoli Provisioning Manager, IBM Tivoli Provisioning Manager for Software, and IBM Tivoli Intelligent Orchestrator contain a new feature that makes automating your provisioning tasks even easier. Web Replay allows anyone working with these Tivoli products to “record” the most complex task sequences step by step, click by click. These recordings can be reused again and again, automating mundane, repetitive or error-prone processes. They can also be used to help provide training to new users and guide them through the use of Tivoli Provisioning Manager in a way that is customized to your organization.

## Capturing workflows for improved automation

You can use Web Replay to record and replay your most common provisioning tasks, such as:

- Capturing an image of a machine and deploying it to a bare-metal box.
- Discovering Microsoft® Windows® machines and conducting an inventory scan.
- Pushing operating system patches out to machines that need them.
- Distributing software to desktops.
- Provisioning test environments.
- Provisioning virtual machines.

With Web Replay, you can capture and reuse any series of product user interface (UI) interactions. By capturing the sequence of UI interactions accurately in a user-friendly and reusable format, Web Replay can help improve your quality of service and virtually eliminate redundant efforts, helping you save valuable time and money.

### **Smarter use of resources**

Web Replay enables smarter use of resources by allowing subject matter experts to capture their knowledge and make it available to others. Web Replay works by “recording” the mouse clicks and actions the user performs as he or she completes a given task. No additional skills are required to record a scenario. Afterwards, any user with appropriate access can run the task, known as a “scenario.” Operations that require a series of clicks can be condensed to a single push of a button.

With Web Replay, your IT experts can accurately record the steps of the most complex and time-consuming tasks in a single scenario. The scenario can then be used as needed by others who may not have the same level of expert knowledge. In this way, IT organizations can leverage Web Replay to delegate repetitive tasks, freeing up skilled resources for critical projects and revenue-generating activities. Using Web Replay scenarios can also help users execute their tasks more completely and accurately.

### **Rapid time to value**

To help you get up and running quickly, Web Replay includes pre-defined scenarios for the most common provisioning tasks. These scenarios can help guide you through the various provisioning processes while introducing you to Tivoli Provisioning Manager operations and functions.

You can also leverage a large and growing library of pre-defined scenarios available for free download, or you can easily create custom scenarios to meet your unique operational needs.

### **Addressing your provisioning needs**

Web Replay gives you great flexibility in creating, editing and executing scenarios, allowing users to:

- Run pre-defined scenarios.
- Create custom scenarios.
- Make edits to existing scenarios.
- Automate functions within scenarios.
- Build interactive scenarios that trigger events based on user actions.
- Include context-sensitive help to provide guidance to scenario users.

Whether you use Tivoli Provisioning Manager, Tivoli Provisioning Manager for Software, or Tivoli Intelligent Orchestrator, Web Replay can help you adapt these products to better fit your environment and processes, allowing you to create the scenarios that target your specific provisioning activities.

### **Web Replay as a training tool**

IT organizations can also use Web Replay as an effective training tool. It can be used to introduce users to the Tivoli software product as well as to the organization's internal processes. It allows your IT provisioning experts to create scenarios that define how you want the Tivoli software products to be used for provisioning in your organization.

Web Replay can be used to train users on specific provisioning processes. What may have been documented in the past in the form of screen shots and Microsoft PowerPoint presentations can now be captured more quickly, completely and accurately as “real world” Web Replay scenarios. These captured scenarios can be used to help guide users through a task step by step. Context-sensitive help can be included to provide guidance to the user along the way, explaining actions as they happen, referring to relevant policies, or giving instructions on any user input that may be required.

## Automated provisioning for testing and development

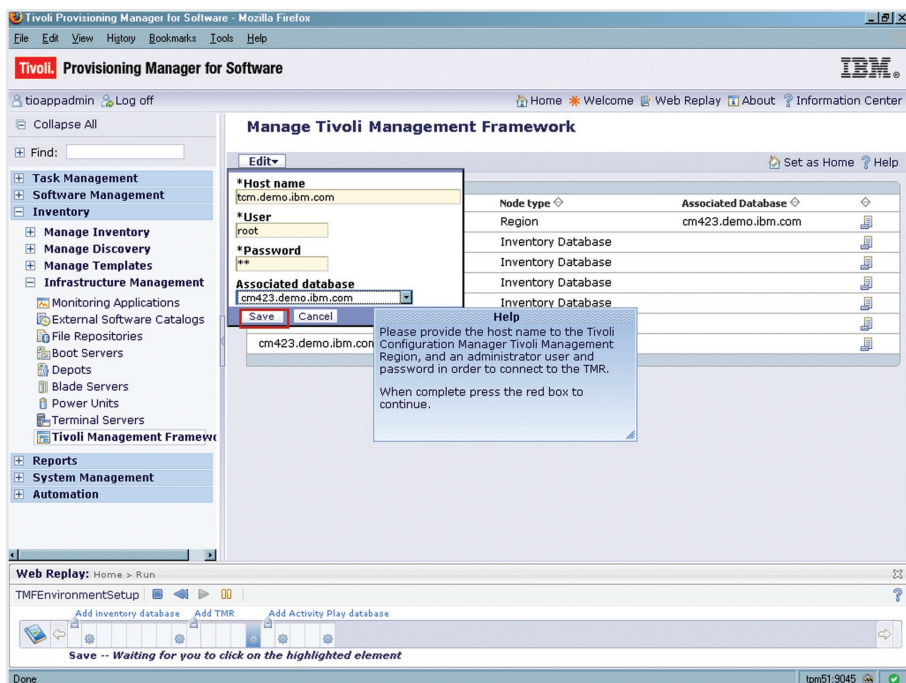
An organization's test center is another environment that can make excellent use of workflow automation tools like Web Replay. Provisioning a test environment often requires a battery of repeatable, manual tasks that can be recorded and replayed as Web Replay scenarios. For example, you could use a scenario to create a software stack that includes an operating system, an agent and a suite of applications. You can then use another scenario to define the compliance policies that apply to a group of those machines.

## Web Replay in a distributed environment

Web Replay adds new capabilities to Tivoli Provisioning Manager for Software, which supports provisioning in distributed environments and provides continued support to existing IBM Tivoli Configuration Manager solutions. Web Replay can help automate software distribution, patch management, and inventory tasks.

## Web Replay in the data center

Web Replay also brings new functionality to Tivoli Provisioning Manager and Tivoli Intelligent Orchestrator. Tivoli Provisioning Manager is a data center provisioning solution that helps organizations



*Web Replay scenarios can be customized and saved for later use. Execution of complex tasks can be reduced to a single click.*

automate common data center tasks such as operating system installation, discovery and inventory, software distribution, patch management, compliance reporting, and test operations. Tivoli Intelligent Orchestrator helps optimize data center provisioning with automated and policy-based configuration, provisioning and deployment. Web Replay enables data center administrators to create automated scenarios that can simplify the complex provisioning tasks required in these environments.

## A growing library of scenarios

Web Replay comes equipped with 14 scenarios to help you with initial discovery, patch management and operating system provisioning. Over 100 additional scenarios are available for free download on the IBM Open Process Automation Library (OPAL), and Web Replay scenarios continue to be added to OPAL by IBM and the Tivoli user community.

Web Replay scenarios are saved inside the Tivoli software database and can be exported as XML files. Scenarios can be shared between servers, such as those in development and test or production environments, and between business units.



### **Web Replay is available now**

The Web Replay feature is included in Tivoli Provisioning Manager, Tivoli Provisioning Manager for Software and Tivoli Intelligent Orchestrator as of version 5.1.1. Web Replay is available as a free download from OPAL for these products as of version 5.1.0.2.

### **Get more value from your investment**

Web Replay helps you extend the value of your Tivoli software investments and helps you make better use of your critical IT resources. By helping you further automate your provisioning functions, Web Replay can help Tivoli software users lower costs, reduce errors, improve training and increase service quality in their data centers and distributed environments.

### **For more information**

To learn more about Web Replay from IBM Tivoli software, contact your IBM Business Partner or visit [ibm.com/tivoli/webreplay](http://ibm.com/tivoli/webreplay)

© Copyright IBM Corporation 2008

IBM Corporation Software Group  
Route 100  
Somers, NY 10589  
U.S.A.

Produced in the United States of America  
March 2008  
All Rights Reserved

IBM, the IBM logo and Tivoli are trademarks of International Business Machines Corporation in the United States, other countries or both.

Microsoft is a trademark of Microsoft Corporation in the United States, other countries, or both.

Other company, product and service names may be trademarks or service marks of others.

References in this publication to IBM products and services do not imply that IBM intends to make them available in all countries in which IBM operates.

No part of this document may be reproduced or transmitted in any form without written permission from IBM Corporation.

Product data has been reviewed for accuracy as of the date of initial publication. Product data is subject to change without notice. Any statements regarding IBM's future direction and intent are subject to change or withdrawal without notice, and represent goals and objectives only.

THE INFORMATION PROVIDED IN THIS DOCUMENT IS DISTRIBUTED "AS IS" WITHOUT ANY WARRANTY, EITHER EXPRESS OR IMPLIED. IBM EXPRESSLY DISCLAIMS ANY WARRANTIES OF MERCHANTABILITY, FITNESS FOR A PARTICULAR PURPOSE OR NON-INFRINGEMENT. IBM products are warranted according to the terms and conditions of the agreements (e.g. IBM Customer Agreement, Statement of Limited Warranty, International Program License Agreement, etc.) under which they are provided.

The customer is responsible for ensuring compliance with legal requirements. It is the customer's sole responsibility to obtain advice of competent legal counsel as to the identification and interpretation of any relevant laws and regulatory requirements that may affect the customer's business and any actions the customer may need to take to comply with such laws. IBM does not provide legal advice or represent or warrant that its services or products will ensure that the customer is in compliance with any law or regulation.

**TAKE BACK CONTROL WITH** 