

## IBM WebSphere Business Glossary Version 8

---

### Highlights

---

- ***Enables business users to manage the business metadata associated with the artifacts managed by the IBM WebSphere Data Integration Suite***
- ***Creation & management of a corporate vocabulary better aligns efforts of IT with the goals of the business***
- ***Custom attributes allow the glossary to be tailored to the specific needs of your users***
- ***Easy to use web-client allows for zero-admin, no hassle roll-out***

### **IBM WebSphere Information Integration**

Organizations face an information challenge. Where is it? How do I get it when I need it in the form I need? What does it mean? What insight can I gain from it? Can I trust it? How do I control it? The list goes on, and the challenges grow unceasingly if businesses cannot ensure that they have access to authoritative, consistent, timely and complete information.

The IBM WebSphere® Information Integration platform integrates and transforms any data and content to deliver information you can trust for your critical business initiatives. It provides breakthrough productivity, flexibility and performance, so you and your customers and partners have the right information for running and growing your businesses. It helps you understand, cleanse and enhance information, while governing its quality to ultimately provide authoritative information. Integrated across the extended enterprise and delivered when you need it, this consistent, timely and complete information can enrich business processes, enable key contextual insights and inspire confident business decision-making.

### **Take Control of Business Metadata**

Significant metadata management capabilities of the WebSphere Information Integration platform are made available with the WebSphere Data Integration Suite. This includes a Metadata Server that provides for management, analysis, and active sharing of metadata artifacts across all of the applications of the Suite. Business metadata provides context to these information technology assets, allowing business & technical users to share a common meaning of the technical and operational artifacts managed by the Metadata Server. WebSphere Business Glossary puts business users in control of your business metadata by providing them with an easy to use, web-based interface that allows for authoring, management, and sharing of critical business metadata.

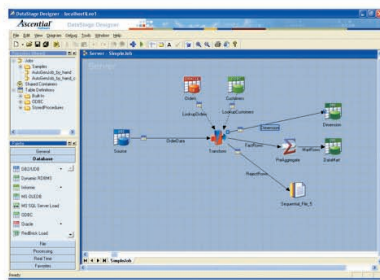
WebSphere Business Glossary can be used to create & manage a controlled vocabulary; creating a common language between business and IT. This is a critical step in better aligning the efforts of the technologists with the goals of the business; a top-priority for many CIOs.

# Benefit: Create a Common Vocabulary Between Business and Technical Users

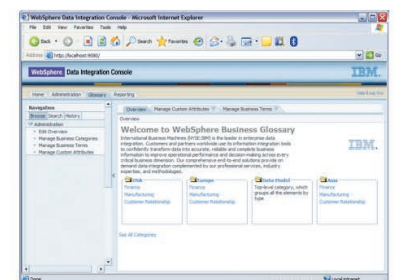
Database = DB2  
 Schema = NAACCT  
 Table = DLYTRANS  
 Column = ACCT\_NO  
 data type = char(11)



GL Account Number  
 The ten digit account number. Sometimes referred to as the account ID. This value is of the form L-FIIIVVVV.



WebSphere DataStage



WebSphere Business Glossary

Figure 1. WebSphere Business Glossary better aligns the efforts of IT with the goals of the business by establishing a common business vocabulary.

In addition to a controlled vocabulary, the WebSphere Business Glossary can be used to build corporate taxonomies, or classification systems, which provide further business context. Once created, this corporate taxonomy can be used to browse the business glossary and defines its structure.

The business glossary also provides users with robust search functionality; providing both a simple and advanced search interface.

Business metadata is typically unique across corporations. Company A may require a data sensitivity attribute, while Company B does not, but instead requires an authorization

attribute. There is no one-size fits all business meta-model. To accommodate this market reality, the WebSphere Business Glossary allows administrators to extend the application with custom attributes.

All of this functionality is delivered via a simple to use, easy-to-learn, web-client that requires no administration.

## WebSphere Business Glossary Features

- *Web-based management of business terms and categories enables creation of a common vocabulary and business taxonomies that are available to both business and technical users.*

- *Synonym functionality allows for access to multiple versions of the truth.*
- *Preferred term functionality enables creation of single version of the truth.*
- *Drill-down access to technical metadata from the WebSphere Data Integration Suite enables users to view these technical artifacts with added business context.*
- *Live connection to the WebSphere Data Integration Suite's Metadata Server guarantees that the technical artifacts being described by the business terms and categories are always up-to-date.*

- Custom attributes allow the administrator to extend business terms & business categories to customize for the unique needs of their enterprise.
  - Customizable entry page enable administrator to tailor application entry to unique needs of his user community.
  - Powerful search capability enabled fast-access to critical metadata artifacts.
  - Assign & retrieve information relating to data stewardship enables users to quickly ascertain responsible party information for all information assets.
- Business Metadata**
- Provides business context to information technology assets
  - Adds business meaning to the artifacts that are created & managed by other IT applications
  - Better aligns the efforts of IT with the goals of the business
- Used to:
    - define a shared meaning of data
    - establish responsibility, accountability, and traceability
    - govern access
    - share insights & experiences among users
  - Must be managed by those that understand the meaning and importance of the information assets to the business

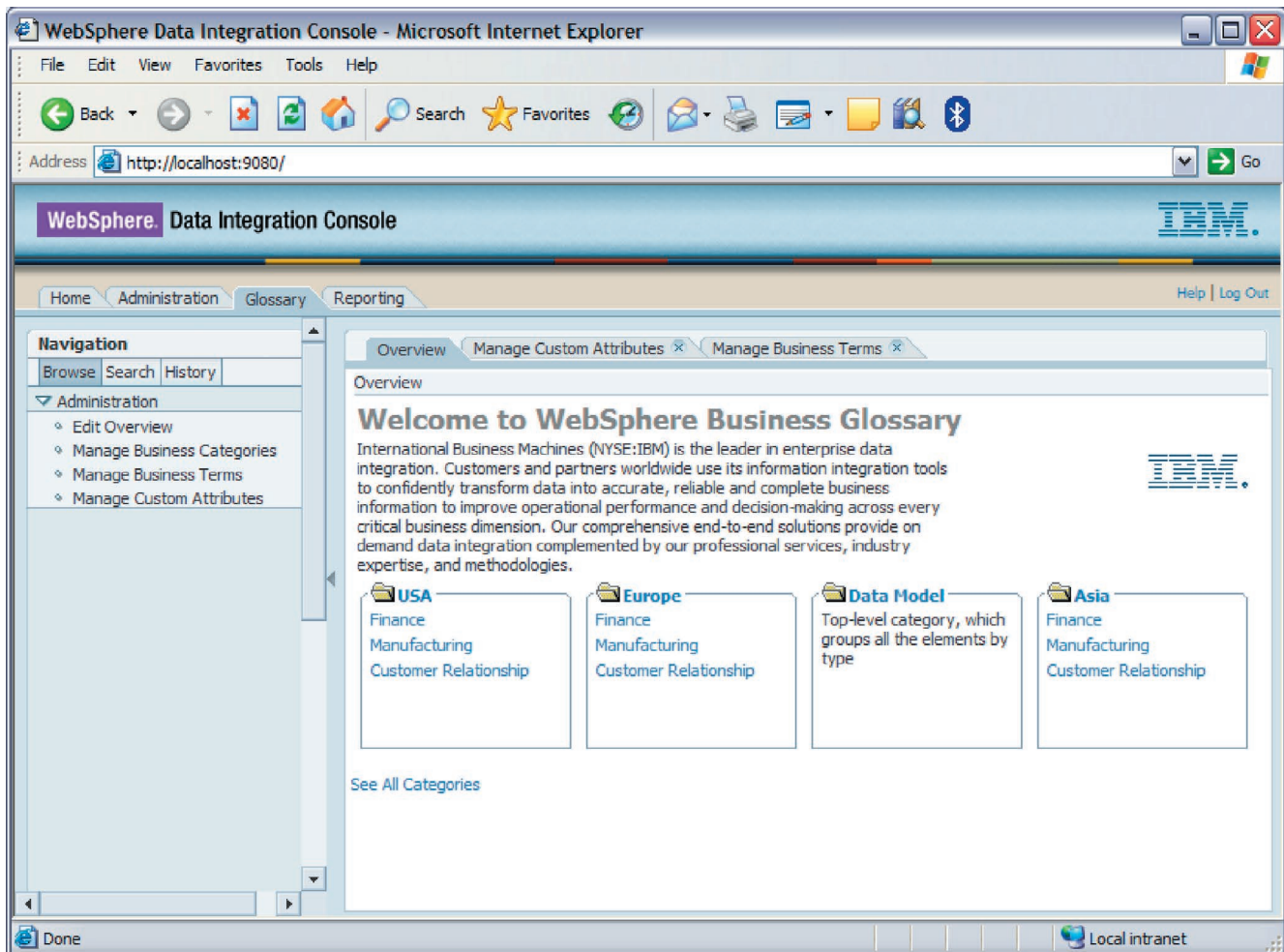


Figure 2. WebSphere Business Glossary provides an approachable web-interface that allows business users to own & manage business metadata



## Customer Objective

- *Document & share critical business aspects of data integration artifacts- especially the data itself*

## System Requirements

WebSphere Business Glossary is an add-on to the WebSphere Data Integration Suite (DataStage®, QualityStage™ or Information Analyzer) and requires that at least one Suite application be installed so that the Metadata Server component of the Suite is present. On the client, WebSphere Business Glossary requires Microsoft Internet Explorer Version 6.0 or higher. For current, detailed hardware and software system requirements for these and other WebSphere Information Integration products, visit [ibm.com/software/data/integration](http://ibm.com/software/data/integration)

## For More Information

To learn more about the technologies and products behind IBM information integration solutions, contact your IBM marketing representative or IBM Business Partner or visit [ibm.com/software/data/integration](http://ibm.com/software/data/integration)

© Copyright IBM Corporation 2005

IBM Software Group

Route 100  
Somers, NY 10589  
U.S.A.

Printed in the United States of America  
11-05  
All Rights Reserved

DataStage, IBM, the IBM logo, the On Demand Business logo, QualityStage and WebSphere are trademarks of International Business Machines Corporation in the United States, other countries or both.

Microsoft and Windows are registered trademarks of Microsoft Corporation in the United States, other countries or both.

References in this publication to IBM products or services do not imply that IBM intends to make them available in all countries in which IBM operates. Offerings are subject to change, extension or withdrawal without notice.

Other company, product or service names may be trademarks or service marks of others.

All statements regarding IBM future direction or intent are subject to change or withdrawal without notice and represent goals and objectives only.

♻️ Printed in the United States on recycled paper containing 10% recovered post-consumer fiber.

The IBM home page on the Internet can be found at [ibm.com](http://ibm.com)