

## IBM Information Server, Version 8: Manage and leverage business metadata

---

### Highlights

---

- **Enable business users to participate in metadata-driven integration for high productivity and flexibility**
- **Enable business users to manage business metadata**
- **Align efforts of IT with the goals of the business by enabling the creation and management of a corporate vocabulary**
- **Tailor the glossary to meet the specific needs of your users**
- **Enable the business user community with intuitive interfaces requiring zero administration, no-hassle, no-training rollouts**

### Take control of business metadata

An IBM survey of CEOs found that organizations that are highly effective at driving information integration are five times more likely than other organizations to drive value creation.<sup>1</sup> Yet difficulties in understanding and interpreting data, determining what data is important and then managing that information creates roadblocks as business and technical users attempt to collaborate for effective information integration. The problem of business definition inconsistency across enterprise environments is often attributed

to the absence of an enterprise-wide data governance and stewardship program.

IBM® Information Server addresses these issues—providing breakthrough productivity and flexibility for integrating and enriching information—by enabling metadata-driven integration. IBM Information Server supports management, analysis and active sharing of metadata artifacts across a full range of integration activities and user roles.

*“IBM Information Server is a key toolset for our multi-phase, multi-year Molecular Medicine Informatics Model project. We are leveraging the capabilities of WebSphere Business Glossary, a module of IBM Information Server, to share information about the types of business and technical metadata stored in our research repository so that users can find the relevant information at their fingertips.”*

—Robert Merriel  
Director of Business Development  
Melbourne Health

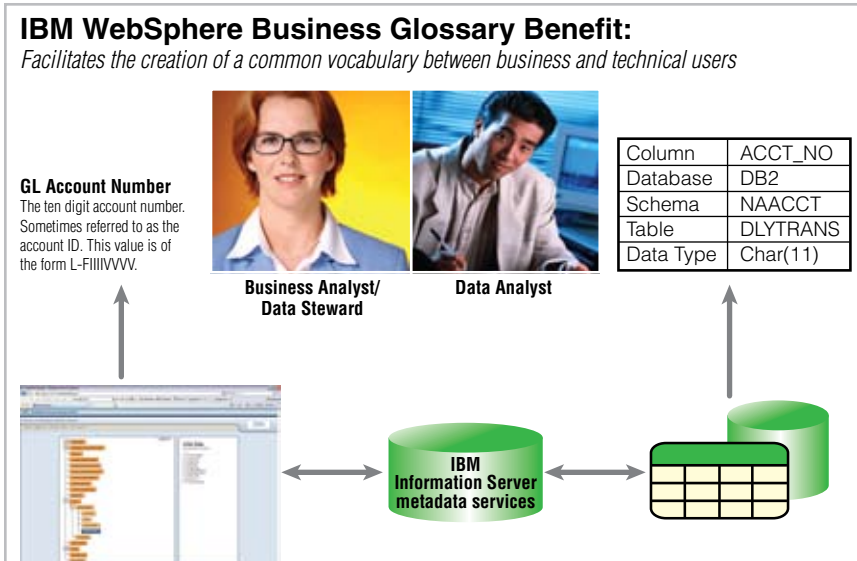


Figure 1. IBM Information Server helps to align the efforts of IT with the goals of the business by establishing a common business vocabulary

**Business metadata: Critical to your success**

Business metadata provides context to information technology assets, allowing business and technical users to share a common understanding of information assets. Metadata offers a variety of business benefits:

- *Provides business context to information technology assets*
- *Adds business meaning to terms created and managed by other IT applications*
- *Helps align IT efforts with business goals*
- *Defines a shared meaning of data*

- *Helps establish responsibility, accountability and traceability*
- *Enables governing of access-sharing insights and experiences among users*
- *Empowers those who understand the meaning and importance of the information to manage business metadata*
- *Supports data governance initiatives, which require a common business vocabulary*

IBM Information Server puts business users in control of business metadata by providing easy-to-use, Web-based interfaces that enable authoring, management and sharing of critical business metadata. As a module within IBM Information Server, IBM WebSphere® Business Glossary (see Figure 1) allows data stewards to create and manage a controlled vocabulary, enabling a common language between business and IT. This is a critical step to better align the efforts of the technologists with the goals of the business—a top priority for most CIOs.

A user's role within an organization often determines the type of interface they use to interact with business metadata; for example, a data steward and a business user have different needs and responsibilities that require different capabilities. An interface that aligns with the way each user works with metadata not only helps improve their overall productivity but can also increase the acceptance and adoption rate of an enterprise business glossary.

IBM addresses these specialized usage requirements with the WebSphere Business Glossary portfolio, designed specifically for data stewards and business users:

- **WebSphere Business Glossary** is a *Web-based administration tool that enables data stewards to create, manage and share a common enterprise vocabulary and classification system.*
- **IBM WebSphere Business Glossary Browser** is a *Web-based interface that provides business users with read-only access to WebSphere Business Glossary contents.*
- **IBM Information Server Business Glossary Anywhere** provides *instant understanding of business terminology directly from any desktop application. Users click on a term to view its business definition in a pop-up window without loss of context or focus.*

### **WebSphere Business Glossary: Linking business and technical metadata**

WebSphere Business Glossary helps organizations create, manage and share an enterprise-wide controlled vocabulary that acts as the common language between business and IT. This is a critical step in better aligning the efforts of the technologists with the goals of the business. In addition to helping you build a controlled vocabulary, WebSphere Business Glossary can help you create corporate hierarchies or classification systems that provide further business context.

Actively connected to IBM Information Server metadata services, WebSphere Business Glossary enables data stewards to link business terms

to technical artifacts, which in turn are shared with IBM Rational® Data Architect, IBM WebSphere Information Analyzer, IBM WebSphere QualityStage™ and IBM WebSphere DataStage®. The result is a common set of semantic tags used by data modelers, data analysts, business analysts and end users. To ensure high quality, only authorized data stewards can use the administrative functions within WebSphere Business Glossary to create and manage the glossary.

There is no one-size-fits-all business metadata model. Organizations often require additional information to be captured to support data governance initiatives and enable architecture frameworks. For example, the ability to document the security sensitivity of a particular piece of information might be required for auditing processes. To accommodate these business requirements, WebSphere Business Glossary allows data stewards to create custom attributes for business categories and terms. In addition, the

ownership or responsibility for these assets can be designated to support corporate data governance initiatives and promote visibility of ownership.

WebSphere Business Glossary is a Web-based interface designed for data stewards to administer the contents of the common glossary. Key features include:

- **Web-based management of business terms and categories** enables the creation of a common vocabulary and business hierarchies for both business and technical users.
  - **Synonym functionality** enables access to multiple versions of the truth.
  - **Preferred term functionality** enables creation of a single version of the truth.
  - **Drill-down access to technical metadata** helps users view technical artifacts with added business context.
  - **Active connectivity to IBM Information Server metadata services** helps ensure technical and business information is current and always up to date.
- **Custom attributes** enable administrators to extend business terms and business categories and to customize the application for the unique needs of their enterprise.
  - **Customizable entry page** enables administrators to tailor application entry to the needs of the user community.
  - **Powerful search capability** provides beginner and advanced search interfaces for fast access to critical metadata artifacts.
  - **Collaborative environment** encourages organic growth by allowing annotations to be added to business terms and categories as well as any artifact managed by IBM Information Server metadata services.
  - **Data steward management** enables users to quickly ascertain responsible-party information for all information assets, and administrators can edit profiles and create relationships/responsibilities.

### **Business Glossary Browser: Search, browse and explore**

Business Glossary Browser is a Web-based interface that provides business users read-only access to WebSphere Business Glossary contents. This high-speed search utility goes directly to the heart of WebSphere Business Glossary and allows users to search on the most frequently accessed objects with just a few simple clicks. Users also have the option to graphically traverse the business metadata for terms, categories and stewards without necessarily having to understand the relationship between these objects—naturally expanding their use and adoption of a common business glossary.

Intuitive and easy to use with no training requirements, Business Glossary Browser supports many metadata-related tasks performed by business users each day, including:

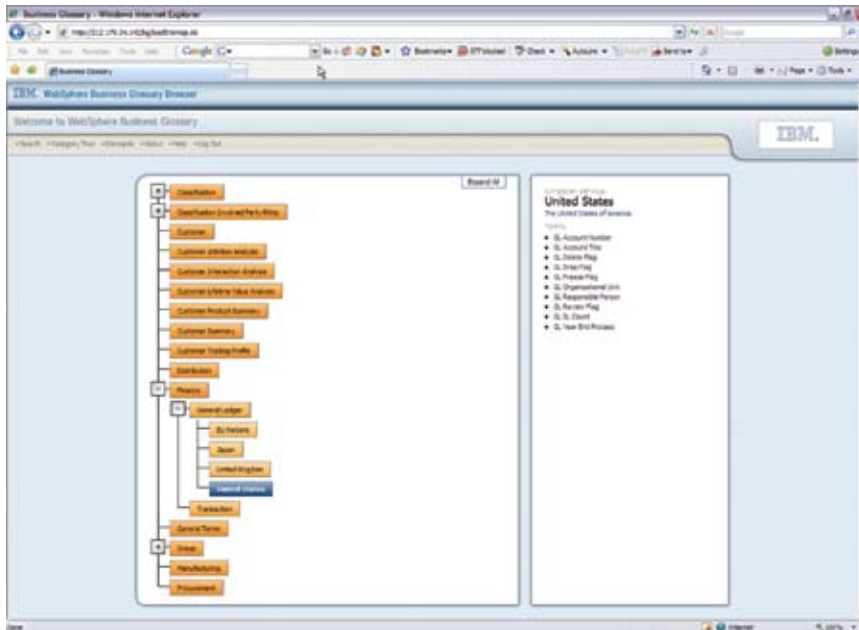


Figure 2. Hierarchical navigation of WebSphere Business Glossary Browser

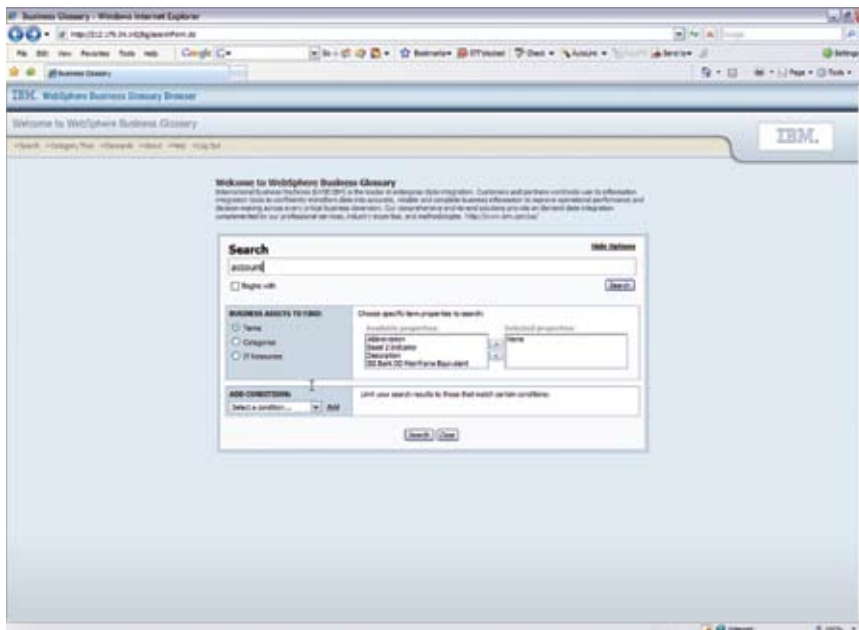


Figure 3. WebSphere Business Glossary Browser search screen

- Searching and exploring the corporate vocabulary/glossary
- Identifying data stewards responsible for data assets
- Viewing information on terms, categories and classified objects with one click
- Sending feedback and changes related to metadata and business terms directly to data stewards

Figure 2 shows the hierarchical navigation capabilities of Business Glossary Browser. Figure 3 shows the browser search screen with advanced filtering options.

### Business Glossary Anywhere: One-click definitions

Business understanding is crucial, yet time pressure often keeps business users from leveraging available resources. For example, you may read an e-mail or a white paper and come across a term or phrase that makes you wonder how it is being defined or used in your organization. Business Glossary Anywhere makes it easy and painless for business users to look up and search business definitions in the business glossary—all without loss of context or focus. This real-time access to unfamiliar terms helps promote the use of established business terms and their policies throughout the organization.

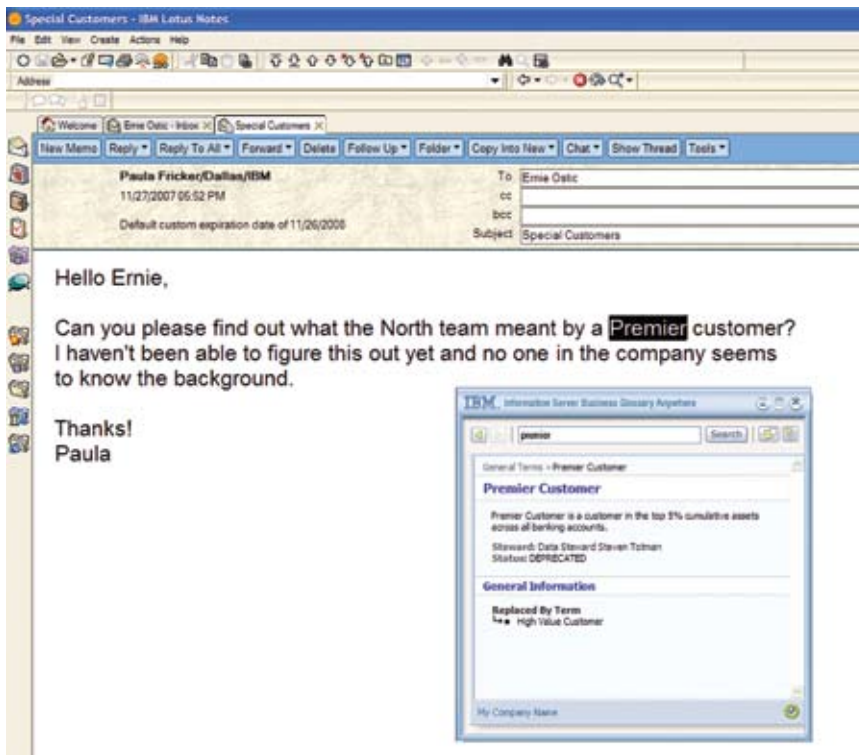


Figure 4. Business Glossary Anywhere shows the results of a search of WebSphere Business Glossary by IBM Lotus Notes®

Business Glossary Anywhere requires no training before deployment to the business community. Business users simply select a term within any application, click a button and see the business definition of the word immediately appear in a pop-up window (see Figure 4). If the exact form of the term or phrase requested cannot be located, the intelligent matching feature suggests similar terms to help users quickly find an answer.

Like Business Glossary Browser, Business Glossary Anywhere also enables access to data stewardship information, so users can quickly contact data stewards with input and feedback on glossary items. To protect the data stored in WebSphere Business Glossary—data that is often proprietary—secure login policies are enforced by the common security layer of IBM Information Server.

**System requirements**

WebSphere Business Glossary interfaces are optional product modules of IBM Information Server. Each requires that IBM Information Server metadata services be installed.

For the client, WebSphere Business Glossary requires Microsoft® Internet Explorer® Version 6.0 or higher. For current, detailed hardware and software system requirements for IBM Information Server product modules, visit [ibm.com/software/data/ips](http://ibm.com/software/data/ips)

**IBM Information Server delivers trusted information**

Organizations face an information challenge. Where is it? How do I get it when I need it in the form I need? What

does it mean? What insight can I gain from it? Can I trust it? How do I control it? The challenges continue to grow if businesses cannot ensure that they have access to authoritative, consistent, timely and complete information.

IBM Information Server is a revolutionary new software platform that helps you derive more value from the complex, heterogeneous information spread across your systems. It enables your organization to integrate disparate data and deliver trusted information wherever and whenever needed, in line and in context, to specific people, applications and processes. It helps business and IT personnel collaborate to understand the meaning, structure and content of any type of information

across any sources. It provides breakthrough productivity and performance for cleansing, transforming and moving this information consistently and securely throughout the enterprise so that it can be accessed and used in new ways to help drive innovation, increase operational efficiency and lower risk.



### For more information

Access these reports and resources to learn more about metadata management and data governance.

*Using metadata to enable data governance:*

[ibm.com/software/sw-library/en\\_US/detail/M969392H43073W75.html](http://ibm.com/software/sw-library/en_US/detail/M969392H43073W75.html)

*The impact of electronically stored information on corporate legal and compliance management: An IBM point of view:*

[ibm.com/industries/financialservices/doc/content/resource/business/1824668103.html](http://ibm.com/industries/financialservices/doc/content/resource/business/1824668103.html)

Gartner. *IBM's Federated Metadata Management Strategy*. April 2007.

[www.gartner.com](http://www.gartner.com)

To learn more about IBM Information Server or other information integration solutions from IBM, contact your IBM marketing representative or IBM Business Partner, or visit [ibm.com/software/data/ips](http://ibm.com/software/data/ips)

© Copyright IBM Corporation 2007

IBM Software Group  
Route 100  
Somers, NY 10589

Produced in the United States of America  
December 2007  
All Rights Reserved

<sup>1</sup>IBM Business Consulting Services. "Expanding the Innovation Horizon: Global CEO Survey 2006." [ibm.com/services/uk/bcs/html/t\\_ceo.html](http://ibm.com/services/uk/bcs/html/t_ceo.html)

IBM, the IBM logo, DataStage, Lotus Notes, QualityStage, Rational and WebSphere are trademarks or registered trademarks of International Business Machines Corporation in the United States, other countries or both.

Microsoft and Internet Explorer are trademarks of Microsoft Corporation in the United States, other countries or both.

Other company, product or service names may be trademarks or service marks of others.

References in this publication to IBM products or services do not imply that IBM intends to make them available in all countries in which IBM operates. Offerings are subject to change, extension or withdrawal without notice. All statements regarding IBM future direction or intent are subject to change or withdrawal without notice and represent goals and objectives only.

The information contained in this document is provided for informational purposes only. While efforts were made to verify the completeness and accuracy of the information contained in this document, it is provided "as is" without warranty of any kind, express or implied. In addition, this information is based on IBM's current product plans and strategy, which are subject to change by IBM without notice. IBM shall not be responsible for any damages arising out of the use of, or otherwise related to, this document or any other documents. Nothing contained in this document is intended to, nor shall have the effect of, creating any warranties or representations from IBM Software.

**TAKE BACK CONTROL WITH** **Information Management**