



# EXPO Guide

## Information On Demand **2013**

November 3 – 7

Mandalay Bay | Las Vegas, Nevada

[ibm.com/events/informationondemand](http://ibm.com/events/informationondemand)

Think **BIG**  
Deliver **BIG**  **WIN BIG**

 **Rocket**  
**Frequentz** 

# ROCK YOUR IT INVESTMENTS

Big Data.  
Intelligent Infrastructure.  
Mobility.

Visit us at booth #702.

WORKING  
IN CONCERT  
WITH YOU

 **Rocket**<sup>®</sup>  
[www.rocketsoftware.com](http://www.rocketsoftware.com)



# Table of Contents

|   |    |
|---|----|
| Welcome.....                            | 04 |
| Guided Tours of the EXPO .....          | 05 |
| Proud EXPO Sponsors .....               | 06 |
| Featured Sponsor Elective Sessions..... | 08 |
| EXPO Theater Presentations .....        | 09 |
| Scan-A-Palooza Sponsors .....           | 10 |
| IBM Exhibits .....                      | 12 |
| EXPO Sponsors .....                     | 20 |
| Exhibitors.....                         | 31 |
| IBM Exhibitor List.....                 | 44 |
| IBM Product List .....                  | 45 |
| IBM Business Partners .....             | 47 |
| Map of EXPO .....                       | 48 |

## Advertisers

|                              |    |
|------------------------------|----|
| Rocket Software, Inc.....    | 02 |
| Frequentz .....              | 21 |
| Ernst & Young.....           | 22 |
| Intel Corporation .....      | 22 |
| BSP Software.....            | 29 |
| CM Mitchell Consulting ..... | 29 |
| Dassault Systemes .....      | 30 |
| QueBIT .....                 | 30 |
| IBM Data Magazine .....      | 35 |
| IBM Security .....           | 36 |
| Brocade .....                | 50 |

# Welcome to the EXPO

## We're glad you've joined us.

With hundreds of IBM Business Partners and IBM exhibitors, the EXPO is open for business and ready to offer you a complete view of what is possible in your industry using leading-edge solutions and services. See products, services and solutions in action. Get acquainted with new technologies that can help achieve breakthrough results.

Big Data & Analytics is transforming our world. And more and more organizations are using it to create a huge competitive advantage for themselves in the marketplace to win big. Visit IBM Business Partner and IBM exhibits throughout the EXPO. Find the right solutions to enhance your company's performance.

Join us for the Grand Opening Reception in the EXPO on Sunday, November 3 from 6:00 p.m. - 8:00 p.m. Spend time with our IBM Business Partners face-to-face to see their products in action and learn about the many services and solutions they offer. Talk with representatives from IBM Information Management, IBM Business Analytics, IBM Enterprise Content Management and a host of other experts within IBM's brands.

Take this opportunity to network and preview the wide-ranging technology and exhibits on hand in this premier exposition. Kick off the conference with us and join in the festivities. Light refreshments and hors d'oeuvre will be served at the Grand Opening Reception.

### Don't miss the many lounges and demo rooms within the EXPO:

- Accelerated Value Program (AVP) Red Carpet Lounge
- Big Data Solution Services
- Client Reference Lounges for:
  - Business Analytics
  - Enterprise Content Management
  - Information Management
- EXPO Presentation Theater
- Get Social area, sponsored by Frequentz
- IBM Business Partner Café
- IBM Software Subscription and Support
- Take 5 Lounge

Be sure to check out the EXPO Theater presentations. You can add these sessions to your personal agenda through Agenda Builder kiosks located across the conference.

## EXPO Dates and Hours\*

|                       |   |                              |
|-----------------------|---|------------------------------|
| Sunday, November 3    | 6:00 p.m.–8:00 p.m.                         | EXPO Grand Opening Reception |
| Monday, November 4    | 12:30 p.m.–3:30 p.m.<br>5:00 p.m.–7:00 p.m. | EXPO open<br>EXPO reception  |
| Tuesday, November 5   | 12:30 p.m.–3:30 p.m.<br>5:00 p.m.–7:00 p.m. | EXPO open<br>EXPO reception  |
| Wednesday, November 6 | 12:30 p.m.–3:30 p.m.<br>3:30 p.m.           | EXPO open<br>EXPO closes     |

\* EXPO booths will be fully staffed at the hours listed above. The EXPO Hall will be accessible Monday through Wednesday, starting at 8:00 a.m. until close; however, booths may not be fully staffed at all times.





### EXPO Theater

Be sure to check out the presentations in the EXPO Theater, featuring content from IBM Business Partners. Find out about solutions that can address the challenges your business is facing.

### Agenda Builder Kiosks

Take advantage of Agenda Builder kiosks located throughout the EXPO and the conference. You can access Agenda Builder on your mobile device, too. Create your own personal agenda, complete conference surveys, check out the latest highlights of the conference, order documents through the eLiterature library to be sent to your personal email address and much more.

### Go Green with eLiterature

IBM has established eLiterature, an electronic library of documents that allows you to send electronic documents to your email address and download the documents when you return home. By using eLiterature, you won't have to carry home printed copies of brochures and white papers. eLiterature is an option on all Agenda Builder kiosks in the EXPO and other areas of the conference. The eLiterature library contains IBM Business Partner documents as well as information on IBM offerings.

### Go GREEN with Dassault

We are excited to "Go EVEN MORE Green" in 2013. We are focusing on reducing waste, repurposing materials and recycling throughout the conference. We hope that you will join IBM and Dassault Systemes, our Green Sponsor, in an effort to become a more sustainable and environmentally responsible conference by watching for opportunities throughout the week.



### Guided Tours of the EXPO At Information On Demand 2013

IBM experts will lead three key solution tours so that attendees see the right demo, get questions answered and leave with a plan to implement Big Data & Analytics solutions.

Each tour will visit key IBM and IBM Business Partner booths to help you understand the solution benefits, and to discuss products and solutions that may be the Big Data and Analytics entry point for your business. Plan to spend an hour on each tour and you'll also have the opportunity to network with peers with similar needs and questions. Space is limited. Be sure to register in the IBM Business Partner Café.

#### Tour Descriptions:

#### Tour 1: Speed up and Simplify Data and Analytics

While the per-byte cost of capturing, processing and storing data continues to decline, total demand is increasing and new approaches are emerging. Learn how to build a Big Data & Analytics master plan in this tour.

Monday & Tuesday  
12:30 p.m., 2:00 p.m.

#### Tour 2: Manage Risk

More data in more hands means more opportunity for error. In this tour, you'll discuss a strategy to be proactive in developing an approach to protect against security and privacy risks.

Monday & Tuesday  
1:00 p.m., 2:30 p.m.

#### Tour 3: Transform Your Industry - IBM Use Cases

This tour is designed to provide an introduction to IBM's Big Data & Analytics strategic industry use cases. Learn how to outperform the competition by reinventing industry solutions.

Monday & Tuesday  
1:30 p.m., 3:00 p.m.

# Proud EXPO Sponsors

## Marquee Entertainment Sponsor:



## Premier Social Media Sponsor:



## Platinum Sponsors:



## Birds-of-a-Feather Lunch Session Sponsor:



PERSISTENT

## Charging Station Sponsors:



## Coffee Break Sponsors:



## Digital Video Wall Sponsors:



## Exclusive Product Certification Area Sponsor:



## EXPO Opening Reception Sponsor:



## Green Sponsor:



## Hands-on Labs Sponsor:



## IBM Business Partner Café Sponsors:



## Media Sponsor:





Gold Sponsors:



# Featured Sponsor Elective Sessions



## Rocket

**BAA-4001B** **Enterprise MRI: Capability Spectrum of a Self-Aware Business**  
Presented by Alan Brown, Solution Lead of Intelligent Infrastructure, Rocket Software  
Tuesday, 10:00 a.m.–11:00 a.m., Reef C

Is your enterprise self-aware? Does your IT infrastructure ‘help’ the business? Is it truly ‘Intelligent’? Let’s consider a new holistic perspective on achieving ergonomic infrastructure in both the strategic and operational domains. From Strategic Analytics to IT Service Management—how does your IT Infrastructure deliver the stakeholder insight needed for your enterprise to grow? From BI to Complex Event Management—can it auto-mine enterprise-wide data (from KPIs to log files) correcting or alerting when pre-set thresholds are breached? Your takeaway: A framework unifying otherwise disparate IT technologies crossing the Business Analytics and IT Optimization domains, and an insight on how to ‘fill the gaps’ for your enterprise.

**IMS-4003A** **Exploring NoSQL for real-time access to VSAM and IMS data**  
Presented by Alex Kodat, Solution Lead of Big Data, Rocket Software; Gregg Willhoit, Director of Data Access Lab, Rocket Software  
Tuesday, 11:15 a.m.–12:15 p.m., Jasmine G

A lot of next generation data technology is glowingly referred to as “post-relational.” You’ve heard the names: Hadoop, MongoDB, Cassandra, HBase. Funny how being non-relational is touted as a positive in post-relational databases but not so much in pre-relational mainframe systems like VSAM and IMS. Discover whether this pre/post distinction really makes sense, and explore how Hadoop and MongoDB can unlock your pre-relational VSAM and IMS data for accelerated use with business analytics.

**ISA-4002A** **The BYOD Challenge: Rapidly and Securely Mobilizing Your Enterprise**  
Presented by Dan Magid, Solution Lead of Mobility, Rocket Software  
Wednesday, 11:15 a.m.–12:15 p.m., Jasmine G

With the explosion of mobile devices in the workplace, workers now expect the kind of anywhere, anytime access to enterprise applications and data that devices can provide. Further complicating things for enterprise IT, users want that access from their personal mobile devices (BYOD). In this session, we’ll explore strategies for rapidly building great mobile user experiences that access functions across your enterprise applications; discuss simple ways to create comprehensive mobile dashboards that deliver secure, on-demand access to business analytics; and discover ways to deploy applications that ensure your data remains safe. You’ll come away with specific steps for implementing a comprehensive corporate mobile strategy.

## Frequentz

**LCI-4019A** **Brand Protection and Consumer Safety: Avoid the Long Term Costs of Product Recalls**  
Presented by Michael Lucas, President/CEO, Frequentz  
Tuesday, 1:45 p.m.–2:45 p.m., Islander G

In this session, Michael will take you through a company’s journey to being a leader in track and trace, starting with Earthbound Farm, transitioning into Frequentz’s acquisition of ITS from IBM and launch of IRIS; focusing on product safety, and protecting companies’ brands for the Food & Retail, Life Sciences, and Industrial industries. Hear about the importance of traceability in the future and how it was borne out of a pharmaceutical company’s need to protect its brand through a product issue and led to the realization that serialization could provide necessary authentication of a product through its lifecycle. It ends with how track and trace will soon include consumers using mobile devices.

# EXPO Theater Presentations

## Monday, November 4

### 1:00 p.m. -1:20 p.m.

|          |   |                             |
|----------|---|-----------------------------|
| EXP-4008 | IGC Brava! for IBM Content Navigator offers a unified viewing experience for IBM FileNet P8 and IBM CM8 | <b>Informative Graphics</b> |
|----------|---|-----------------------------|

### 1:30 p.m -1:50 p.m.

|          |   |                        |
|----------|---|------------------------|
| EXP-3995 | Don't Replicate – Innovate with Next Gen Mainframe Data Architectures | <b>Rocket Software</b> |
|----------|---|------------------------|

### 2:00 p.m. -2:20 p.m.

|          |  |                              |
|----------|--|------------------------------|
| EXP-4000 | The Next Performance Revolution is Here! | <b>Compuware Corporation</b> |
|----------|--|------------------------------|

### 2:30 p.m. -2:50 p.m.

|          |   |                 |
|----------|---|-----------------|
| EXP-4017 | Dont Fight Mother Nature, Hire Her – A Case Study in Big Data, Supply Chain Logistics and Track & Trace | <b>Frequenz</b> |
|----------|---|-----------------|

### 3:00 p.m. -3:20 p.m.

|          |   |                 |
|----------|---|-----------------|
| EXP-4018 | Sticker Shock Now? Just Wait. Determine Products' True Cost Using Big Data and Predictive Analytics | <b>Frequenz</b> |
|----------|---|-----------------|

### 6:00 p.m. -6:20 p.m.

|          |  |                        |
|----------|--|------------------------|
| EXP-3996 | Deploying Rocket Software's General Purpose Event Correlation Technology to IT Infrastructure Management | <b>Rocket Software</b> |
|----------|--|------------------------|

## Tuesday, November 5

### 1:30 p.m. -1:50 p.m.

|          |   |                 |
|----------|---|-----------------|
| EXP-4004 | Mastering Control of Business-Critical Document Processes with IBM & ReadSoft | <b>ReadSoft</b> |
|----------|---|-----------------|

### 2:00 p.m. -2:20 p.m.

|          |   |                        |
|----------|---|------------------------|
| EXP-3992 | I Used an Online File Sharing Program— Is that Wrong? Empower Mobile Users with Secure, Enterprise File Sharing | <b>Rocket Software</b> |
|----------|---|------------------------|

### 2:30 p.m. -2:50 p.m.

|          |                                |                          |
|----------|--------------------------------|--------------------------|
| EXP-4020 | Digital and Big Data Analytics | <b>Ernst &amp; Young</b> |
|----------|--------------------------------|--------------------------|

### 3:00 p.m. -3:20 p.m.

|          |  |                          |
|----------|--|--------------------------|
| EXP-4006 | Intel Datacenter Imperatives and Opportunities | <b>Intel Corporation</b> |
|----------|--|--------------------------|

# Scan-A-Palooza 2013



## CM Mitchell Consulting

[www.cm-mitchell.com](http://www.cm-mitchell.com)

**Booth 1118-G**

CM Mitchell Consulting Corporation (CMMC) is an IBM Advanced Business Partner specializing in Enterprise Content Management software product solutions. With CMMC's DocSavi verified solution along with the IBM Datacap Capture solution, businesses gain a comprehensive yet seamless integration of their IBM FileNet P8 Content Management implementation with their Oracle E-Business Suite ERP applications.



## DBI Software

[www.DBISoftware.com](http://www.DBISoftware.com)

**Booth 321**

Optimize DB2 LUW Performance, IT Costs, and Productivity. DBI Software provides Breakthrough Performance Results and instant ROI for organizations having the most demanding performance requirements and discriminating preferences. Learn more by visiting our booth or contacting us at 1-866-773-8789 or 1-512-249-2324.



DOCUMENT ACCESS SYSTEMS  
Enterprise Content Management

## Document Access Systems

[www.documentaccess.net](http://www.documentaccess.net)

**Booth 1220**

Since 1991, Document Access Systems (DAS) has been assisting our customers in reducing costs, improving productivity and managing risk. We do this by combining an understanding of business needs with an expertise in Enterprise Content Management. DAS is a Software Value Plus Business Partner for IBM FileNet ECM and Smarter Cities.



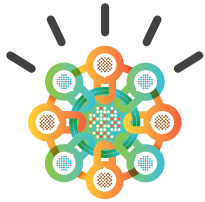
## IBM Big Data Platform

[www.ibm.com/software/data/bigdata/use-cases.html](http://www.ibm.com/software/data/bigdata/use-cases.html)

**Booth 324**

Thinking about big data? Trying to decide where to start? IBM is focused on helping organizations understand what problems big data can address. Stop by booth #324's "Five Key Big Data Use Cases for Big Data" area and learn more about how you can dive into big data today!





**IBM Security**  
**[www.ibm.com/security](http://www.ibm.com/security)**  
**Booth 526**

IBM Security offers one of the world's broadest and integrated portfolios of enterprise security products and services. The portfolio, supported by world-renowned IBM X-Force™ research offers solutions for security intelligence, extending security intelligence with Big Data, identity and access management, database security, application development, risk management, endpoint management, network security and more.



**LearnQuest**  
**[www.learnquest.com](http://www.learnquest.com)**  
**Booth 1212**

As a Global Training Provider, LearnQuest provides complete IBM software and systems training solutions. Blended learning enhances our approach by customizing training to meet client-specific needs around products and tools, development methodologies, and client processes. Providing students with information that is meaningful to job performance helps them become skilled users.



**QUBEdocs**  
**[www.qubedocs.com](http://www.qubedocs.com)**  
**Booth 1406**

QUBEdocs automates the creation of comprehensive, meaningful, web-based documentation for even the most complex Cognos TM1 models – enhancing support and reducing risk when making changes. With QUBEdocs, it's easy to understand the relationships and data-flows inherent within models, troubleshoot issues, conduct impact analysis and track changes over time or between environments.



**RTTS**  
**[www.rtts.com](http://www.rtts.com)**  
**Booth 409**

QuerySurge is enterprise software built specifically to automate the testing of data warehouses and the ETL process. QuerySurge enables you to increase the level of quality within your data warehouse by analyzing and pinpointing any differences to find bad data throughout the ETL process. Certified with IPDA (Netezza).



**Teradata**  
**[www.teradata.com](http://www.teradata.com)**  
**Booth 1114**

Teradata and IBM have been teaming for more than a decade to help companies turn data into insights that lead to better, faster decisions. From successful implementations with 460+ joint customers to well-established partner relationships that foster customer-centric innovation, Teradata and IBM offer premium solutions that meet today's business demands.





# IBM Exhibits

Take a tour around the EXPO and look for these IBM highlights along the way.

## AVP Red Carpet Lounge

MR08

Returning for the fourth consecutive year, the Lounge, open daily from 8 a.m. to 7 p.m., provides Accelerated Value Program customers a place to grab a refreshment between sessions, talk to peers about their AVP solutions, and have in-depth discussions with AVP business leaders and experts about upcoming renewals and add-on services. All conference attendees are invited to stop by the Lounge to learn how the Accelerated Value Program can help drive increased benefits from your IBM software solutions.

## Big Data & Analytics

614

IBM Big Data & Analytics enables organizations to create a competitive advantage by capturing the value of existing and untapped data and content with analytics to be more right, more often, and to act faster, driving better driven decisions, business processes and client experiences. IBM's integrated approach to capabilities, solutions, expertise and infrastructure helps ensure that organizations can start today, get results quickly and grow. Visit booth 614 to learn more.

## Big Data Solution Services

MR08

Big Data Solutions Services, located next to the AVP Red Carpet Lounge, is your one-stop shop for all things related to information management and Big Data Solution Services. Here you will learn about our broad range of offerings, created to expedite your solution strategy, implementation and optimization. Come by to talk to us about your solution and skills requirements and to learn how you can benefit from our vast experience and proven practices.

## Business Analytics

902

### Business Analytics: fast, easy, smart

All organizations are on an analytics journey to extract real value from data as a means of empowering decision makers with actionable insights that drive better outcomes. Plan the next steps on your journey with information on predictive and business intelligence, performance management and risk analytics, and their use cases. And see game-changing solutions that deliver fast time to insight, are easy to use, and are smart, with embedded business and industry expertise. Visit booth #902 or [ibm.com/business-analytics](http://ibm.com/business-analytics) for more information.

### Products

- IBM Accelerated External Reporting Solution
- IBM Advanced External Reporting
- IBM Algorithmics
- IBM Anti-Fraud Signature Solution
- IBM BI Pattern for In-Memory Analysis
- IBM Business Analytics on System z
- IBM Capacity Management Analytics for zEnterprise
- IBM Cognos Analysis for Microsoft Excel
- IBM Cognos BI Scorecarding
- IBM Cognos Business Viewpoint
- IBM Cognos Command Center
- IBM Cognos Controller
- IBM Cognos Disclosure Management
- IBM Cognos Enterprise (includes Cognos Business Intelligence)
- IBM Cognos Express
- IBM Cognos Incentive Compensation Management
- IBM Cognos Insight
- IBM Cognos Integration Server
- IBM Cognos Quota Management
- IBM Cognos Territory Management
- IBM Cognos TM1
- IBM Customer Next Best Action Signature Solution
- IBM OpenPages
- IBM Predictive Asset Optimization Signature Solution
- IBM Predictive Maintenance & Quality
- IBM Smarter Analytics Signature Solutions
- CFO Performance Insight
- IBM Social Media Analytics
- IBM SPSS Analytic Catalyst
- IBM SPSS Analytic Server
- IBM SPSS Analytical Decision Management
- IBM SPSS Data Collection
- IBM SPSS Modeler
- IBM SPSS Statistics



## Business Analytics Hands-on Labs: Products and Support Tips & Tricks

**MR13**

### Products

Test-drive the latest software at your own pace. Work through real-life scenarios created by product experts and learn how to apply the software to your own business problems. Spend time with experts and see how you can improve your existing implementation with new capabilities.

### Support tips and tricks

This drop-in lab provides personal, one-on-one assistance with subject matter experts, helping you understand the programs, processes, policies and systems you need to access IBM Support. Make sure that you are set up today and begin maximizing your online support experience through IBM's support portal, knowledge resources, support request tool, e-notifications and more!

## Business Analytics Learning Services

**MR15**

Find the enterprise education approach that suits the way in which you prefer to learn. Explore enterprise training options based on your role, product or preferred delivery method, including...

- Customizable enterprise learning products
- Training assets for unlimited use
- Web-based training courses
- Instructor-led online training
- Cognos® 10 embedded learning videos

This lab also gives you the opportunity to work one on one with our consulting education team members to learn more about learning assessments and training plans for your enterprise.

## Business Analytics: Meet Your Technical Support Team Meet Business Analytics Support

**MR14**

Do you have a challenging test case, a design problem, or any other pressing technical question? Schedule time to meet one-on-one with a Support Analyst to work through your specific issues and get advice on how to overcome your toughest challenges.

## Cloud Computing

**720**

The cloud is about more than efficiency. Properly leveraged, the cloud has the power to transform organizations by helping deliver enhanced agility, greater insight, improved service delivery, and simple, security-rich collaboration. Visit booth 720 to learn more.

# Transforming your world

On a Smarter Planet, the nexus of forces that are Social, Mobile, Big Data and Analytics and Cloud are transforming our world around us. Visit the New Era of Computing area in the EXPO at Information On Demand 2013 to learn how Big Data & Analytics, Cloud, Mobile and Social Business are creating game-changing opportunities for organizations. Talk with subject matter experts. See technologies in action:

### Big Data & Analytics

Big data & Analytics enables organizations to create a competitive advantage by capturing the value of existing and untapped data and content with analytics to be more right, more often and act faster to drive better driven decisions, business processes and client experiences. IBM's integrated approach of capabilities, solutions, expertise and infrastructure ensures organizations can start today, get results quickly and grow.

### Cloud Computing

Cloud computing is about more than efficiency. Properly leveraged, cloud has the power to transform organizations by helping deliver enhanced agility; greater insight; improved service delivery; and simple, security-rich collaboration.

### Mobile Enterprise

Mobile, social cloud, big data and the "Internet of things" are creating new opportunities for business by introducing new kinds of interactions between people, information and the physical world. IBM MobileFirst solutions help organizations turn every mobile interaction into an opportunity to create value by combining deep industry expertise with the software, services, and solutions an organization needs to plan, build, integrate, manage and protect mobile infrastructures, applications, data and devices.

### Social Business

From marketing and sales to product and service innovation, social business is changing the way people connect and the way organizations succeed.

### ECM Central

MR12

ECM Customer Reference clients are invited to visit the new ECM Client Connections Corner, conveniently located within ECM Central on the EXPO floor in MR 12. Here you can connect and network with other ECM Customer Reference Clients, share your story & success with Customer Reference prospects or join the IBM Client Reference Program and learn about the benefits. Also hear special presentations on how ECM solutions help our customers. Join the experts to learn tips and tricks.

### Enterprise Content Management

924

Please stop by our Enterprise Content Management (ECM) booth at the EXPO. Experience our dedicated ECM solutions, services and education demos. The booth will showcase our entire ECM portfolio: Advanced Case Management; Content Analytics; Document Imaging and Capture; Information Lifecycle Governance; and Social Content Management, as well as exciting new ECM solutions. You'll learn how our customers have gained new insights and better outcomes with ECM solutions. Visit booth #924, talk with ECM experts and see their demos.

### Products

- Advanced Case Management:
  - Case Manager
  - Case Foundation
- Document Imaging and Capture:
  - Content Manager
  - Content Manager OnDemand
  - Datacap Taskmaster Capture
  - FileNet Content Manager
  - Content Foundation
  - Production Imaging Edition
- ECM Solutions:
  - Fraud
  - Patient Care
  - Intellectual Property
- Information Lifecycle Governance:
  - Defensible Disposal
  - Value-based Archiving
  - Ediscovery
  - Records and Retention
- Social Content Management:
  - Connections Enterprise Content Edition
  - Content Navigator
- Content Analytics:
  - Content Analytics with Enterprise Search
  - Content and Predictive Analytics
  - Intelligent Investigation Manager
  - Content Classification
  - Patient Care and Insights

### IBM Business Partner Café

MR03

*Sponsored by Ingram Micro and Marketing Advocate*

The IBM Business Partner® Café is a “must visit” for all IBM Business Partners in the EXPO. IBM Business Partner program experts will be ready to meet with you to discuss the incentives, offerings, marketing benefits and enablement opportunities that best align with your business priorities and product portfolio. New in 2013 is the IBM Business Partner Resource Center, a self-navigated application for exploring additional IBM opportunities and learning more about the key marketing benefits and programs available. Also, if you are an IBM Business Partner, be sure to check out the new collaborative area in the cafe. “Let’s Talk Partner” experts will assist you in taking full advantage of new tools, provide specialized expertise and help answer your questions.

### IBM IT & Infrastructure Analytics (C&SI)

708

#### New solutions for today's IT challenges

An organization's IT systems and applications can generate up to one terabyte of data per day. Traditional decision-support tools lack the breadth and depth to analyze this data, quickly identifying and isolating root cause issues, tuning performance, and anticipating problems. This applies to both data center assets and physical assets, located on premises and in the cloud. Learn from our experts how IBM's new SmartCloud® Analytics and Smarter Infrastructure offerings can address your IT challenges.

### Products

- Predictive Maintenance and Quality
- SmartCloud Analytics – Predictive Insights
- SmartCloud Analytics– Log Analysis
- SmartCloud Monitoring (capacity analytics)
- SmartCloud Virtual Storage Center (automated storage tier optimization)



## IBM Power Systems

608

Big data & analytics is providing unprecedented insights into opportunities, threats and efficiencies. Armed with real-time analytics, Power Systems Clients are discovering new revenue sources, delivering personalized experiences and improving our quality of life. From business & predictive analytics with dynamic in-memory technology to cognitive computing with IBM Watson, IBM Power Systems is uniquely designed for analytics, delivering faster insights when and where they're needed most.

### Products

- Big Data Solutions on Linux on Power Systems
- IBM AIX Solution Edition for Cognos
- IBM AIX Solution Edition for SPSS
- IBM BLU Acceleration Solution – Power Systems Edition
- IBM Watson
- InfoSphere BigInsights on Power Systems
- InfoSphere Streams on Power Systems

## IBM PureData Systems

626

### Meeting big data challenges with simplicity, speed and lower cost

As big data challenges increase, the demands on data systems have never been greater. IBM PureData™ Systems are optimized exclusively for delivering data services to today's demanding applications by offering built-in expertise, integration by design and a simplified experience throughout their lifecycles. Visit booth #626 or [ibm.com/puredata](http://ibm.com/puredata) to see how our family of expert integrated systems minimizes complexity at every step and helps you drive true business value for your organization.

### Products

- IBM PureData System for Analytics
- IBM PureData System for Hadoop
- IBM PureData System for Operational Analytics
- IBM PureData System for Transactions

## IBM PureSystems

626

### Changing the experience and economics of IT

Mobility, social networks, big data and analytics are redefining client engagement and transforming business. In the face of this, cloud computing is quickly becoming the new IT delivery model. The IBM PureSystems™ family can help you speed deployment of these strategic initiatives, while lowering overall risk and costs. By simplifying the entire IT lifecycle, IBM PureSystems offerings have already helped thousands of clients fundamentally change the economics and experience of IT. Visit booth #626 or [ibm.com/puresystems](http://ibm.com/puresystems) for more information.

### Products

- IBM PureApplication System
- IBM PureData System
- IBM PureFlex System

## IBM PureSystems for SAS Analytics

412

### Changing the experience and economics for SAS Analytics

Big data and analytics applications continue to redefine how clients are transforming business. The IBM PureSystems family can help you optimize the performance and deployment of your SAS applications, while lowering overall risk and costs. IBM PureApplication™ System patterns for SAS Grid Manager allow for faster time to value in a modernized infrastructure. IBM PureSystems offerings have already helped thousands of clients fundamentally change the economics and experience of IT. Visit booth #412 or [ibm.com/puresystems](http://ibm.com/puresystems) for more information.

### Products

- IBM PureSystems for SAS Analytics

### IBM Research

316

#### **For IBM Research, the world is our laboratory**

No matter where discovery takes place, IBM researchers push the boundaries of science, technology and business to make the world work better. IBM Research is a global community of forward-thinkers working toward a common goal: progress. Visit booth #316 for a sneak peek into the latest innovations in big data, enterprise content management and business analytics.

#### **Products**

- Cognos
- Data Explorer
- IBM Academic Performance and Insights
- IBM Case Manager
- IBM Content Analytics
- IBM DB2
- IBM Master Data Management
- IBM SmartCloud
- IBM Social Media Analytics
- InfoSphere BigInsights
- InfoSphere Streams
- Netezza (Pure Data)
- OpenPages
- SPSS
- Symphony
- Watson for Healthcare

### IBM Security

526

#### **Security intelligence. Think integrated.**

IBM Security offers one of the world's broadest, most advanced and highly integrated portfolios of enterprise security products and services. The portfolio, supported by world-renowned IBM X-Force® research and development, provides the security intelligence to help organizations holistically protect their people, data, applications and infrastructure. IBM offers solutions that extend security intelligence with big data, identity and access management, database security, application development, risk management, endpoint management, network security, and more. Visit booth #526 or [ibm.com/security](http://ibm.com/security).

#### **Products**

- IBM Big Data Platform
- IBM Endpoint Manager for Mobile
- IBM InfoSphere BigInsights
- IBM InfoSphere Guardium Data Activity Monitor
- IBM QRadar Security Intelligence Platform
- IBM Security Access Manager for Mobile
- IBM Security AppScan
- IBM Security Identity and Access Management Suite
- IBM Security Network IPS
- IBM Security Network Protection (XGS)
- IBM Security QRadar SIEM

### IBM Smarter Process

1229

#### **Reinventing business operations with the IBM Smarter Process**

In a customer-centric world, processes must be instant, seamless and insightful. Visit us at booth #1229 to learn how to differentiate your routine operations—opening accounts, determining eligibility, managing claims—and how to grow market share.

#### **Products**

- Blueworks Live
- IBM Business Monitor
- IBM Business Process Manager
- IBM Case Manager
- IBM Integration Bus
- IBM Operational Decision Manager

### IBM Software Subscription & Support

432

#### **Any question. Any time.**

Get even more value from your software by leveraging the full range of technical knowledge, tools and experts available to you through IBM Software Security & Support. Accessible 24 hours a day, seven days a week, our worldwide network of more than 4,000 technical experts are ready to help you resolve any question, at any time. Make sure that you are being smart about your support! Visit us at booth #432 or [ibm.com/support](http://ibm.com/support) for more information.

### IBM WebSphere Application Servers & eXtreme Scale

511

IBM WebSphere® Application Server provides increased productivity for today's faster application and mobile development, intelligent management, caching and more with a new lightweight, dynamic Liberty Core edition.

#### **Products**

- WebSphere Application Server
- WebSphere Application Server Liberty Core
- WebSphere Application Server Network Deployment
- WebSphere eXtreme Scale

### IBM University Programs

312

Need help finding big data and analytics skills? Meet faculty from top schools partnered with IBM to develop the talent you need to take full advantage of big data & analytics. From data scientists and business analysts to big data architects our partner schools can provide the talent you need. Meet the experts who lead IBM's university programs.



## Information Management

324

IBM Information Management will showcase 16 comprehensive pedestals featuring the complete InfoSphere and Data Management portfolios including our Big Data solutions. Customers will have the chance to see our solutions in action and talk directly to our experts. You will gain the practical knowledge to maximize the value of our information and analytics solutions including Information Integration, Big Data, Master Data Management, Information Governance, DB2, Database Tools and Data Warehousing.

### Products

- BLU Acceleration Solution - Power Systems Edition
- Cognos Business Intelligence
- DB2 10.5 for Linux, UNIX and Windows
- DB2 on the Cloud
- DB2 pureScale
- DB2 with BLU Acceleration
- Informix 12.1
- Informix Flexible Grid
- Informix Genero
- Informix OpenAdmin Tool (OAT) for Mobile
- Informix TimeSeries
- Informix Warehouse Accelerator
- InfoSphere BigInsights
- InfoSphere Data Explorer
- InfoSphere Data Integration and Quality
- InfoSphere Guardium
- InfoSphere Information Integration and Governance
- InfoSphere Master Data Management
- InfoSphere Optim Tools
- InfoSphere Optim
- InfoSphere Streams
- Platform Symphony

## Information Management Client Reference Lounge

MR09

Are you an IBM client reference? Would you like to be able to access a VIP area where you can relax, grab a cup of coffee, and work or unwind while at Information On Demand? It takes 15 minutes to share your story and become both an IBM client reference and a VIP with access to the lounge during all conference show floor hours. Simply stop by and schedule 15 minutes to talk with the team or email John Woloson at wolo@us.ibm.com.

## InfoSphere Demo Room

MR4

Are you confident in your data? Check out the InfoSphere demo room featuring more than 50 solution demos. Speak directly with our product engineers and architects to learn more about how we can address your immediate needs and future plans. See IBM's latest innovations in integration and governance that deliver immediate context for big data, protection of big data, and automated integration of data from both traditional internal and new external sources.

### Products

- InfoSphere Business Information Exchange
- InfoSphere Data Replication
- IBM Entity Analytics Solutions
- InfoSphere Federation Server
- InfoSphere Guardium
- InfoSphere Information Server
- InfoSphere Master Data Management (MDM) InfoSphere Optim.

## Mobile Enterprise

620

Mobility, social networks, big data and the "Internet of things" are creating opportunities for businesses by introducing new kinds of interactions among people, information and the physical world. IBM MobileFirst solutions help organizations turn every mobile interaction into an opportunity to create value by combining deep industry expertise with the software, services and solutions an organization needs to plan, build, integrate, manage and protect mobile infrastructures, applications, data and devices. Visit booth 620 to learn more.

### Products

- IBM and Mobility Wireless Services
- IBM Application Management Services
- IBM Endpoint Manager for mobile devices
- IBM Interactive
- IBM MessageSight
- IBM Mobile Application Platform Management Services, IBM Mobile Application Development from the Cloud,
- IBM Mobile Enterprise Services for managed mobility
- IBM Mobile Infrastructure Strategy and Planning Services, IBM Mobile Strategy Accelerator
- IBM Omni-Channel Assessment
- IBM Rational Test Workbench
- IBM Security AppScan, IBM Security Access Manager for Cloud and Mobile
- IBM Tealeaf CX Mobile
- IBM Worklight

### Smarter Computing

726

IBM is pioneering a new computing model to help its clients build an IT infrastructure that is simple, automated and flexible. We call this approach Smarter Computing, and it has three defining characteristics: it's built on a software-defined environment, designed for big data and open. Visit the Smarter Computing booth to discover why IT infrastructure matters and how leading organizations are using the cloud, big data and analytics to drive better outcomes.

#### Products

- Smarter Computing:
  - Data
  - Cloud
  - Security
- Analytics / Big Data
- Blade Center
- Flash
- Power
- Pure Flex
- Smarter Storage
- Software Defined Environments
- System Networking
- System x
- System z
- Technical Computing

### Social Business

714

From marketing and sales to product and service innovation, IBM Social Business® is changing the way people connect and the way organizations succeed.

### SoftLayer, an IBM Company

822

SoftLayer®, an IBM Company, operates a global cloud infrastructure built for Internet scale. With 13 data centers in the United States, Asia and Europe, as well as a global footprint of network points of presence, SoftLayer's platform is home to leading-edge customers from web startups to global enterprises. SoftLayer's modular architecture provides unparalleled performance and control, with a full-featured application programming interface (API) and sophisticated automation, controlling a flexible unified platform that seamlessly spans physical and virtual devices.

#### Products

- SoftLayer cloud infrastructure

### System z Enterprise Solutions

508

Organizations of all sizes are under intense competitive pressure to provide new and improved services, as well as innovate, differentiate, deliver new value. And to do it all for less with fewer resources. IBM System z® software provides innovative and differentiated solutions for the cloud, mobility, security, and application development and deployment to enable better business results. Visit our booth to see how you can lower costs but still get the performance, reliability, security and quality you should expect for your IT environment.

#### Products

- CICS Transaction Server
- CICS TS Feature Pack for Mobile Extensions
- IBM Business Process Manager
- IBM Endpoint Manager with LDAP integration
- IBM MessageSight Appliance
- IBM MQ
- IBM Operational Decision Manager
- IBM Resource Access Control Facility
- IBM Security Key Lifecycle Manager
- IBM Security QRadar SIEM
- IBM Security zSecure suite
- IBM WebSphere Application Server.
- JSON support for core middleware.
- OMEGAMON for z/VM and Linux
- Power SC
- Rational Developer for System z and new compilers
- Rational Developer with Worklight Toolkit
- Rational Team Concert
- Rational Test Workbench
- SmartCloud Control Desk
- SmartCloud Orchestration
- System Automation for Multiplatform
- Tivoli Storage Manager Extended Edition
- UrbanCode Release and Deploy





## The BLU Experience

## MR5

BLU Acceleration. Change the Game. At a time when Big Data and Analytics is one of the hottest areas of business and IT spending, BLU Acceleration delivers breakthrough simplicity for speed of thought analytics. At Information On Demand, you have the opportunity to experience BLU Acceleration for yourself. There are numerous opportunities to learn about innovative BLU Acceleration technology, developed by IBM Research and Development Labs. Starting in the EXPO on Sunday, join the BLU Experience in MR5. There are also approximately 25 sessions and hands-on-labs for beginners and advanced users alike throughout the week to suit your schedule. Select the Fast Pass: DB2 with BLU Acceleration roadmap at <http://ibm.co/BLUFastPass> to build your agenda.

## Products

- BLU Acceleration Solution - Power Systems Edition
- Cognos Business Intelligence
- DB2 10.5 for Linux, UNIX and Windows
- DB2 on the Cloud
- DB2 pureScale
- DB2 with BLU Acceleration
- Informix 12.1
- Informix Flexible Grid
- Informix Genero
- Informix OpenAdmin Tool (OAT) for Mobile
- Informix TimeSeries
- Informix Warehouse Accelerator
- InfoSphere Optim Tools

# BLU Acceleration. Change the Game.

At a time when Big Data and Analytics is one of the hottest areas of business and IT spending, BLU Acceleration delivers breakthrough simplicity for speed of thought analytics. At Information On Demand 2013, you have the opportunity to experience BLU Acceleration for yourself. There are numerous opportunities to learn about innovative BLU Acceleration technology, developed by IBM Research and Development Labs. Starting in the EXPO on Sunday, join the BLU Experience in MR05. There are also approximately 25 sessions and hands-on-labs for beginners and advanced users alike throughout the week to suit your schedule. Select the Fast Pass: DB2 with BLU Acceleration roadmap at [ibm.co/BLUFastPass](http://ibm.co/BLUFastPass) to build your agenda.

Join us to embrace this game-changing technology. Learn how BLU Acceleration can help you:

- Gain insights at the speed of thought
- Accelerate business innovation by shortening the cycle from data to action
- Maximize your investment without the risk of rip and replace

**BLU Acceleration**  
**Speed. Simplicity. Affordability.**

# EXPO Sponsors



## Marquee Entertainment Sponsor

### Rocket Software, Inc.

702

[www.rocketsoftware.com](http://www.rocketsoftware.com)

Rocket Software is a global software development firm that helps companies realize their business goals through innovative technology. We build and deliver enterprise solutions in the areas of Business Intelligence and Analytics; Storage, Networks, and Compliance; Application Development, Integration, and Modernization; and Database Servers and Tools. Visit us to see our mobile tools for tablets and smartphones, intelligent IT infrastructure software solutions, and mainframe tools that support and enhance IBM System z. Rocket has been a proud IBM Business Partner for over 20 years. Our 1,000+ employees are committed to delivering value to customers and partners around the world. [www.rocketsoftware.com](http://www.rocketsoftware.com).



## Premier Social Media Sponsor

### Frequentz

502

[www.frequentz.com](http://www.frequentz.com)

Frequentz is a leader in comprehensive traceability and information management technologies that improve productivity, product quality, and profitability. Its solutions provide valuable insight into end-to-end supply chains, and critical business processes by collecting, storing and analyzing serialized, life history data. Applications of its software are currently used in the agricultural, pharmaceutical, retail, and automotive industries globally and promote intelligent analytics and consumer safety.



## Platinum Sponsors

### BSP Software

816-P

[www.bspsoftware.com](http://www.bspsoftware.com)

BSP Software is a technology-based software solution provider driving quick ROI and lowering total cost of ownership for Business Analytics deployments. MetaManager offers complete control over IBM Cognos development and administration through one powerful solution. Integrated Control Suite features version control, change management, archive management, content recovery and more.



### Ernst & Young

808-P

[www.ey.com/advisory](http://www.ey.com/advisory)

Ernst & Young defines Enterprise Intelligence (EI) as utilizing enterprise information in a smarter way by focusing on information that makes the most business impact. We integrate Information Strategy & Data Management, Enterprise Performance Management, Business Intelligence and Risk & Performance Analytics to accelerate and align business objectives with performance risk and quality drivers, enabling clients to view their business differently. Implementing an EI strategy includes:



- Establishing the strategy, scope and structure
- Mapping the framework to strategic outcomes
- Executing on high-value, high-return activities
- Delivering information on a process by process basis
- Providing ongoing governance support

### Intel Corporation

612-P

[www.intel.com](http://www.intel.com)

Intel, the world leader in silicon innovation, develops technologies, products and initiatives to continually advance how people work and live. Intel® microprocessors provide leading performance and proven reliability for the foundation of your analytics environment. Through close engineering collaboration IBM and Intel provide develop mission critical and data management solutions.





From Point of Origin to Point of Sale,  
We Make Business Intelligence Visible.

Formerly known as IBM's "InfoSphere Traceability Server," **IRIS** is the product that truly allows visibility into your entire supply chain and business process.



**IRIS**

Information Repository  
& Intelligence Server

Gather ■ Track ■ Trace ■ Protect

**IRIS** allows organizations to improve business process and gain insight into product movement and supply chain logistics.

- Fully Compliant to Regulatory Standards
- Financing and Alliance Programs Available
- On-Site or Cloud Applications
- ERP Agnostic

**What is Frequentz?**



**Pharmaceutical & Life Sciences**

Our clients represent some of the largest manufacturers and distributors of pharmaceuticals in the world. Tack on ePedigree to IRIS and you'll be GS1 compliant and have visibility throughout the supply chain.



**Retail / Food & Beverage**

Using our ePTI, growers and food processors take advantage of the most advanced, economical, and easy-to-use software solution to meet their traceability needs.



**Industrial & Aerospace**

To our large OEM customers, using the eRAM add-on application to IRIS enables them to reduce costs, improve business insight, and reduce risk.





Building a better working world



**Trust your instincts.  
But only after you  
have the facts.**

A good decision is an informed decision. EY's Enterprise Intelligence team helps you see past the flood of information to the facts and figures that are relevant to the decisions you make every day. There's data. And then there's the data that matters to your business.

What makes us different is that we see things differently. You will, too. Find out more at [ey.com/advisory](http://ey.com/advisory).

Monday, November 4 | 11:30 a.m. - 12:30 p.m.

**Predictive Modeling for Risk Identification and Business Improvement at General Motors**

Derek Huffman, EY  
Daniel Wiechec, General Motors

Location: South Convention Center, Mandalay Bay D

Tuesday, November 5 | 10:00 a.m. - 11:00 a.m.

**Digital Big Data: What Digital Tells Us About the Nature and Challenge of Big Data Analytics**

Gary Angel, EY

Location: North Convention Center, Islander G

Tuesday, November 5 | 2:30 p.m. - 2:50 p.m.

**Digital and Big Data Analytics**

Gary Angel, EY  
Location: EXPO Theater

© 2013 EYGM Limited. All Rights Reserved. ED None.



**Visit the Intel booth in the EXPO and enter our daily drawings for a chance to win a Samsung\* Galaxy Tab 3!**

\* Other names and brands may be claimed by their owners.  
Copyright © 2013 Intel Corporation. All rights reserved. Intel, the Intel logo and Intel Xeon are registered trademarks of Intel Corporation in the U.S. and other countries.

## Intel Sessions at Information On Demand

*An Intel® SSD will be given away at each of these sessions!*

**IBM\* InfoSphere Information Server Virtualization on VMware\* and Intel® Xeon® Processors**

*Monday 2:00 - 3:00pm*

**Agile IBM DB2 pureScale Deployment with DB2 10.5 on Intel® Xeon® Processors and High Performance Fabric**

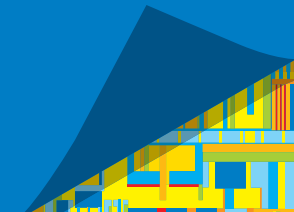
*Monday 3:30 - 4:30pm*

**88x + Performance Gains Using IBM DB2 with BLU Acceleration on Intel Technology**

*Tuesday 11:15am - 12:15pm*

**Driving Operational Excellence**

*Wednesday 3:00 - 4:00pm*





**Gold Sponsors**

**Alacrinet**

**www.alacrinet.com**

Alacrinet delivers solutions that aggregate and integrate the IBM Big Data tool sets. These capture data from a host of sources—structured, unstructured, streaming, transactional, and more. Using our own proven technologies, Alacrinet analyzes the data and gives it a face—a graphical interface that's easy to grasp. And we make it accessible and easy for your entire team to share in real-time on computers, tablets, or Smartphones. So it's actionable immediately, not weeks later. Big data is a giant leap for Business Intelligence—and the future of your business. Talk to Alacrinet. We can help you get there.

**627-G**



**Amdocs**

**www.amdocs.com**

For more than 30 years, Amdocs has ensured service providers' success and embraced their biggest challenges. To win in the connected world, service providers rely on Amdocs to simplify the customer experience, harness the data explosion, stay ahead with new services and improve operational efficiency. The global company uniquely combines a market-leading BSS, OSS and network control product portfolio with value-driven professional services and managed services operations. With revenue of \$3.2 billion in fiscal 2012, Amdocs and its 20,000 employees serve customers in more than 60 countries. Amdocs: Embrace Challenge, Experience Success. For more information, visit Amdocs at [www.amdocs.com](http://www.amdocs.com).

**314-G**



**Aviana Global Technologies, Inc.**

**www.avianaglobal.com**

Aviana's mission is to partner with our clients to become more agile and responsive through the optimal use of performance management for strategic decision-making. For the last 20 years, Aviana Global has been at the forefront of leading-edge performance management solutions with an impressive array of clients including many Fortune 1000 companies in various industries including hospitality and gaming, manufacturing, financial services, retail and healthcare. Check us out at [www.avianaglobal.com](http://www.avianaglobal.com).

**512-G**



**Capgemini**

**www.capgemini.com**

With more than 125,000 people in 44 countries, Capgemini is one of the world's foremost providers of consulting, technology and outsourcing services. The Group reported 2012 global revenues of EUR 10.3 billion. Together with its clients, Capgemini creates and delivers business and technology solutions that fit their needs and drive the results they want. A deeply multicultural organization, Capgemini has developed its own way of working, the Collaborative Business Experience™, and draws on Rightshore®, its worldwide delivery model. Learn more about us at [www.capgemini.com](http://www.capgemini.com)

**522-G**



**CitiusTech Inc.**

**www.citiustech.com**

CitiusTech is a specialist provider of healthcare technology solutions to healthcare IT vendors, hospitals / IDNs, health plans, ACOs and HIEs. CitiusTech's BI-Clinical solution for healthcare BI / analytics is deployed at 1,200+ provider locations, making it the most widely used third-party BI / analytics solution across North America. BI-Clinical leverages IBM HCPDW and IBM technologies like Cognos and Netezza to provide comprehensive clinical, financial, operational and regulatory reporting. It has an extensive suite of pre-built apps with 600+ out-of-the box KPIs / measures. BI-Clinical is ONC HIT 2014 certified for Meaningful Use Stage 2 CQMs and is NCQA certified for HEDIS 2013 reporting.

**826-G**



**CM Mitchell Consulting**

**www.cm-mitchell.com**

CM Mitchell Consulting Corporation (CMMC) is a Document and Enterprise Content Management professional service company assisting cross-industry clientele with software product solutions. As a business partner with Kofax, IBM and Oracle, CMMC provides proven results for document capture, imaging, file repository and process management. Our solutions can be implemented in a secure cloud environment or on-premise with optional administrative services. CMMC's total professional service package includes analysis, identification, installation, configuration, and training by our expert, certified consultants. Since 1992, CMMC has been a trusted resource to help companies identify the most effective life-cycle solution for their paper and electronic documents.

**1118-G**





## EXPO Sponsors *continued*

### Gold Sponsors *continued*

#### **Creative Computing, Inc**

1116-G

[www.mycci.com](http://www.mycci.com)

IBM Cognos (Premier) Partner since 1991 focused on Data Integration, Reporting and Analytics using InfoSphere, Cognos, SPSS, and TM1 for Manufacturing, Healthcare and Higher Ed. Software, hardware, consulting and training to ensure successful DW, BI, Analytics, and Office of Finance solutions. (North America Best Implementation Award, Partner of the Year)



#### **CSC**

120-G

[www.csc.com](http://www.csc.com)

As you address new sources of data from machine sensors, telematics, smart grids, mobile devices, social media or data streams, organizations are looking for a better way to service and retain their customers, create new markets, monetize data assets, mitigate risk and meet regulatory requirements. CSC's Big Data and Analytics Services provide consulting, implementation and as-a-service solutions to clients in all industries to gain new insights not available in the past. Get big rewards with big data; come talk to CSC.



#### **DataClarity Corporation**

1403-G

[www.dataclaritycorp.com](http://www.dataclaritycorp.com)

DataClarity is an award-winning IBM Premier Business Partner who combines IBM technology with their own innovative best-in-class software accelerators, certified consultants, industry best practices, and lessons learned from over 15 years of work with industry leading organizations globally, to build highly successful solutions that address the whole information lifecycle.



Stop by booth #1403G to meet our experts and see firsthand how Netezza, SPSS, IBM Cognos BI, IBM Cognos TM1, and our award-winning accelerators can be fully-integrated to provide:

- Real-time What-if Big Data Predictive Analytics
- Financial Consolidation, Planning, Process Management, Reporting & Performance Dashboards
- Mobile Analytics on the iPhone, iPad and Android devices

#### **Datawatch Corporation**

1015-G & 1022-G

[www.datawatch.com](http://www.datawatch.com)

Datawatch is a leader in information optimization products and solutions, allowing organizations to deliver the greatest data variety possible into their big data and analytic applications. Datawatch provides organizations the ability to integrate structured, unstructured, and semi-structured sources like reports, PDF files, and EDI streams into these applications to provide a 360 degree perspective of the business.



#### **DIYOTTA**

828-G

[www.diyotta.com](http://www.diyotta.com)

Diyotta enables businesses to accelerate time to value of their data assets for BI reporting and analytics by fully leveraging the power of MPP data warehouse appliances like Netezza and distributed computing platforms including BigInsights/Hadoop. Diyotta's Data Integration Suite is a feature-rich, intuitive, high-performing solution providing a fully-integrated, modular platform purpose-built to optimize and automate data integration through our unique frictionless approach to ELT using 100% SQL pushdown for full in-database processing. Diyotta tracks lineage, reduces data latency from hours to minutes, eliminates intermediate ETL platforms and provides the ability to nimbly create new data streams to meet business demands.



#### **enChoice, Inc**

820-G

[www.enchoice.com](http://www.enchoice.com)

enChoice®, Inc. deploys, supports, administers, maintains and protects ECM solutions solving highly complex business problems. We deliver vertical solutions for Underwriting, Accounts Payable, Claims and Human Resources that can be deployed on premises, hosted or via the cloud with an emphasis on CMOD business applications. We provide ECM-aware hot backup and operational recovery that work seamlessly with your existing system-level backup systems to optimize efficiency, facilitate compliance and protect against information loss. Additionally, we ensure Total System Support to our customers including single-point-of-contact for current and sun-setted systems, phone support, and Remote System Administration for ECM systems.



## Gold Sponsors *continued*

### Esri

[www.esri.com](http://www.esri.com)

Esri is the recognized leader in location analytics and has been an IBM Business Partner for over 20 years. Esri Maps for IBM Cognos yields new insights into business performance and derives more value from your existing Cognos practice through improved customer analysis, more efficient operations, and improved collaboration and communication. Esri and IBM have also worked together to bring the value of location analytics to IBM Netezza, DB2 and IBM Informix. Visit us in the EXPO hall to see how Esri location analytics can give your organization a competitive advantage.



1410-G

### Infosys Limited

[www.infosys.com](http://www.infosys.com)

Infosys is a global leader in consulting, technology and outsourcing solutions. As a proven partner focused on building tomorrow's enterprise, Infosys enables clients in more than 30 countries to outperform the competition and stay ahead of the innovation curve. With US\$7.4B in annual revenues and 155,000+ employees, Infosys provides enterprises with strategic insights on what lies ahead. We help enterprises transform and thrive in a changing world through strategic consulting, operational leadership and the co-creation of breakthrough solutions, including those in mobility, sustainability, big data and cloud computing.



1314-G

### HCL America, Inc.

[www.hcltech.com](http://www.hcltech.com)

HCL is a \$6.3 billion leading global technology and IT consulting services enterprise. Founded in 1976, the HCL team now consists of over 90,000 professionals operating in 31 countries. We partner with leading organizations to transform the way they leverage information and data to gain valuable insights. Enterprise information management, integration, replication and migration of enterprise application rollouts, business intelligence, big data, data warehousing, MDM, and enterprise content management form the core of these services.



528-G

### Ironside Group

[www.ironsidegroup.com](http://www.ironsidegroup.com)

The Ironside Group has served as a trusted advisor to some of the world's most prestigious organizations since 1999. We are a Premier IBM Business Partner with deep expertise in business analytics and data warehousing. We offer consulting, training and software resale in the full suite of IBM business analytics and information management solutions, including business intelligence, financial performance management, risk analytics, predictive analytics and big data. A Cognos Business Partner for over fourteen years, Ironside has helped organizations of all sizes to improve their performance by making intelligent and informed decisions. We have offices throughout the East Coast and the Great Lakes region.



812-G

### Imagine Solutions

[www.imaginesolutions.com](http://www.imaginesolutions.com)

Encapture is an enterprise-class, distributed document capture system for securely capturing business content from any location, inside or outside of your organization and delivering the content in a consistent and uniform way to virtually any workflow or archiving system. Encapture is designed to drive document capture from the point of first touch with as little demand on the end user as necessary. Encapture's broad set of capture functions enable organizations to shift document capture from simply scanning paper, to an approach where content is captured directly from the application and medium from which it is received.



927-G

### Mer Security

[www.mer-group.com](http://www.mer-group.com)

The MER Group Security Division specializes in delivering end-to-end HLS and other security and intelligence solutions. The division serves as a one-stop-shop for national and municipal scale projects, small to large organizations and facilities as well as International Mega events. The Mer Security Division is multinational organization with offices in Asia, Africa, Europe, North America, South America, Over 40 subsidiary, Over 1,400 employees Publicly traded since 1992.



108-G



## EXPO Sponsors *continued*

### Gold Sponsors *continued*

#### **Motio**

**www.motio.com**

Founded in 1999, Motio's mission has always centered around delivering innovative software solutions which improve the lives of their customers. Motio is an IBM Premier Business Partner, offering a robust suite of software solutions which streamline the BI life cycle for IBM Cognos. Motio's portfolio includes MotioCI, a unique blend of version control, automated testing, and release management capabilities designed to improve BI team efficiency and BI quality, and MotioPI, the free tool that eases cumbersome Cognos tasks and increases productivity. Visit Motio in booth 1206G or at [www.motio.com](http://www.motio.com) to learn more about their solutions.



**1206-G**

#### **NEC Corporation**

**www.necam.com**

NEC Corporation of America is a leading provider of innovative IT, network, communications, analytics, performance management and biometrics products and solutions for organizations across multiple vertical industries, including healthcare, government, higher education and hospitality. NEC offers a broad portfolio of Big Data solutions to help enterprises reliably collect and analyze critical organizational information and make smarter decisions faster. NEC Corporation of America is a wholly-owned subsidiary of NEC Corporation, a global technology leader with a presence in 44 countries and more than \$32 billion in revenues.



**116-G**

#### **NetApp**

**www.netapp.com**

NetApp will showcase the NetApp Open Solution for Hadoop reference architecture developed with IBM Silicon Valley Lab, that delivers an Enterprise-ready solution for IBM InfoSphere BigInsights. Combined IBM and NetApp products provide managed direct attached storage for Hadoop clusters and offers higher reliability and management with fewer resources; the NetApp Distributed Content Management solution, designed using StorageGRID, which is NetApp's object storage solution for federating multiple distributed content repositories; and the DB2 optimized environment for data warehouse management and migration services that is designed to increase performance and reliability, and optimized total cost of ownership.

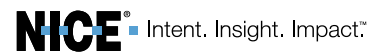


**524-G**

#### **NICE**

**www.nice.com**

NICE Systems (NASDAQ: NICE), is the worldwide leader of intent-based solutions that capture and analyze interactions and transactions, realize intent, and extract and leverage insights to deliver impact in real time. Driven by cross-channel and multi-sensor analytics, NICE solutions enable organizations to improve business performance, increase operational efficiency, prevent financial crime, ensure compliance, and enhance safety and security. NICE serves over 25,000 organizations in the enterprise and security sectors, representing a variety of sizes and industries in more than 150 countries, and including over 80 of the Fortune 100 companies .



**520-G**

#### **Perficient**

**www.perficient.com**

IBM recognizes Perficient as a Premier Business Partner, the highest partnership status granted by IBM. IBM has acknowledged and awarded Perficient's technical expertise and innovative approach to solving our customers' business challenges via multiple awards and authorizations.



**818-G**

#### **Polycom, Inc.**

**www.polycom.com**

Polycom believes in the power of bringing people together, regardless of location, to create better collaboration experiences and transform the way people work. As a leader in interoperable unified communications and collaboration, we have been pioneering breakthrough communication experiences for more than 20 years. Today, more than 400,000 organizations around the globe, and across all industries, rely on secure Polycom voice, video and content sharing solutions to get their job done. More information about Polycom is available at [www.polycom.com](http://www.polycom.com). Visit the Polycom Booth 514-G at Information on Demand 2013.



**514-G**

## Gold Sponsors *continued*

### Pyramid Solutions

[ecm.pyramidsolutions.com](http://ecm.pyramidsolutions.com)

Pyramid Solutions is an innovative leader in the design and implementation of Case Management solutions for Banking, Insurance and Government entities. While offering SaaS or dedicated server solutions, our solutions allow for customers to achieve their maximum business values sooner. Whether designed around one of our award winning products or a completely custom solution tailored to meet your specific needs, our certified engineers will ensure that all your needs are met.

824-G

**PYRAMID**  
SOLUTIONS

### QueBIT

[www.quebit.com](http://www.quebit.com)

QUEBIT, an IBM Premier Business Partner and a leader in providing consulting services was recognized in 2012 as IBM's North American Business Analytics partner of the year. Utilizing proven, best practice methodologies that provide companies with efficient, easy-to-use solutions at exceptional value, QueBIT empowers companies to make intelligent decisions faster. [www.quebit.com](http://www.quebit.com)

814-G



### Roamware, Inc

[www.roamware.com](http://www.roamware.com)

Roamware is a Global Leader in Mobile Operator Service Solutions. Roamware's market leading Roaming and Local VAS, Mobile Virtual Network Enabler Solutions, Big Data Analytics and Mobile Financial Services Solutions are deployed in 600 Operator Networks, MVNOs and Banks across 168 countries. Roamware's innovative solutions in the area of Big Data, LTE Roaming, Customer Experience Management, MVNO, EU2014 and Active Testing are helping mobile operators stay ahead of the innovation curve while achieving subscriber delight. With nearly 100 patents, Roamware is an innovation leader in its space. Roamware's Global HQ is in Santa Clara with global operations. Visit [www.roamware.com](http://www.roamware.com).

1316-G



### Senturus

[www.senturus.com](http://www.senturus.com)

Senturus, a business analytics consultancy, helps clients see the immense value that is locked in their data and put it to work. We create clarity from chaos. We are dedicated to your success and share the expertise we have gained in our over 1,400 consulting projects in business intelligence, planning and predictive analytics. We provide frequent, live, education-packed webinars and over 90 recorded resources including best practices, tips & tricks, and unbiased product reviews for free on [senturus.com](http://senturus.com). We offer in-depth Cognos training, both online and on-site. For 13 years, Senturus, a IBM Premier Business Partner, has delivered successful business analytics solutions and Cognos training to over 700 clients, from medium-sized to Fortune 500 companies.

1412-G



**SENTURUS**

### Shaspa GmbH

[www.iamus.net](http://www.iamus.net)

Shaspa is dedicated to providing innovative solutions that enable customers to visualize, monitor, manage and optimize their environments to improve quality of life, reduce environmental impact and energy costs. The Shaspa Service Framework is a unique framework that integrates wired and wireless sensors, social networks, mobile and 3D Environments through a set of standard protocols. The solution provides both manufacturers and service providers new ways to cooperate, collaborate and design new products connected to services.

114-G



### Sogeti USA LLC

[www.us.sogeti.com](http://www.us.sogeti.com)

Sogeti is a leading provider of technology and software testing, specializing in Application, Infrastructure and Engineering Services. Sogeti offers cutting-edge solutions around Testing, Business Intelligence & Analytics, Mobile, Cloud and Cyber Security, combining world class methodologies and its global delivery model, Rightshore®. Sogeti brings together more than 20,000 professionals in 15 countries and has a strong local presence in over 100 locations in Europe, USA and India. Sogeti is a wholly-owned subsidiary of Cap Gemini S.A., listed on the Paris Stock Exchange. For more information please visit [www.sogeti.com](http://www.sogeti.com).

518-G





**Stream Integration**

**516-G**

**[www.streamintegration.com](http://www.streamintegration.com)**

What do “Big Data – Analytics – MDM – IM – Social – Cloud – Governance” have



in common? Stream Integration! Using our proven accelerators, proprietary methodology, and the most experienced group of consultants in the industry, Stream Integration has been delivering successful projects for over a decade. Trust one of North America’s leading IBM consultancy Business Partners for Information Management and Analytics to help deliver your next project on time, on budget, and on value! Stop by our booth to find out why more Fortune 500 customers across all industries turn to Stream Integration as their trusted partner for project delivery. Aligning Technology to Business!

**Tata Consultancy Services**

**1303-G**

**[www.tcs.com](http://www.tcs.com)**

Tata Consultancy Services is an IT services, consulting and business solutions organization that delivers real results to global business,



ensuring a level of certainty no other firm can match. TCS offers a consulting-led, integrated portfolio of IT, BPO, infrastructure, engineering and assurance services. This is delivered through its unique Global Network Delivery Model™ (GNDM), recognized as the benchmark of excellence in software development. A part of the Tata group, India’s largest industrial conglomerate, TCS has over 277,000 consultants in 44 countries. For more information, visit us at [www.tcs.com](http://www.tcs.com).

# Can a piece of technology *REALLY* be a man's best friend? If it's BSP Software and you're a Cognos® Admin... *Yes*

## MetaManager

**SECURITY ADMINISTRATION:** streamlined, drag & drop  
**REPORT VALIDATION:** can automate, identify errors quickly  
**DOCUMENTATION:** quick and easy documentation of everything in the content store  
**FIND & REPLACE:** easily change data items, parameters, or logos  
**TO LIST JUST A FEW...**

## Other Utilities

**ACCELATIS:** the premier performance management and performance monitoring software application for IBM Cognos  
**CPM EXPLORER:** Windows Explorer extension for IBM Cognos Connection, providing quick and easy access to IBM Cognos consumers' daily activities  
**APPARO:** master data management and data entry solution integrated into IBM Cognos  
**CUSTOM DEVELOPMENT:** let's talk...

## Integrated Control Suite

**VERSION CONTROL:** comment on version changes, revert to previous versions, one-click promotion  
**DEPLOYMENT:** migrate objects between environments without leaving Cognos Administration console, create customized deployment projects  
**RECYCLE BIN:** easy self-service option for users to restore deleted objects  
**AND SO MUCH MORE...**

## MetaManager for IBM® Cognos TM1®

**SECURITY:** drag & drop security to an object, including elements  
**DOCUMENT:** quick and easy documentation with a drag & drop interface  
**UPDATE:** update cube rules in bulk with impact analysis and validation  
**WITH MORE ON THE WAY...**



Your Cognos Administration tasks got you dog tired?  
 Visit our booth 816-P to fetch more information about our products.  
 We may just teach you some new tricks!

[www.bspsoftware.com](http://www.bspsoftware.com)

# ECM MADE SIMPLE



IBM Verified Solution for seamless integration of IBM FileNet P8 Content Management with Oracle E-Business Suite ERP applications

## Professional Services

**TeamSavi** can help build your ECM future from initial planning to post-production support, including:

- Strategic Planning and Design
- IBM Datacap Capture Solution
- Implementation and Migration
- Installation and Configuration
- Business Process Management
- System Integration



Specializing in IBM FileNet, we tailor document management solutions to meet your specific business needs



**CM Mitchell Consulting**

An Information Management & Business Process Solutions Provider





STOP BY AND VISIT US IN **BOOTH #124**

**IF WE** want desert cities to drink,  
where do we get fresh water?

Harvesting icebergs – a dream  
our software could bring to life.



**3DEXPERIENCE**

It takes a special kind of compass  
to understand the present and  
navigate the future.

Find out more: [3DS.COM/IFWE](http://3DS.COM/IFWE)

**DASSAULT  
SYSTEMES**

**IF WE** ask the right questions  
we can change the world.

Black Hole: large mass of  
incomprehensible data that  
prevents fast, superior  
decision making

It's not too late



[www.quebit.com](http://www.quebit.com)



Advanced Analytics

# Save the date!

**InformationOnDemand2014**

**October 26-30**

Mandalay Bay

Las Vegas, Nevada

# Exhibitors



## **Actuate Corporation** 1228

**[www.xenos.com](http://www.xenos.com)**

Actuate' CCM solution delivers personalized and insightful customer communications driving improved business results through exceptional customer experience. A highly scalable and intelligent component platform Actuate CCM addresses the challenges and complexities across the complete CCM lifecycle.

## **Adjacent Technologies, Inc.** 1226

**[www.adjacent-tech.com](http://www.adjacent-tech.com)**

Adjacent Technologies has provided ECM solutions to the public and private sectors for over 11 years. Specializing in IBM Case Management and Cloud deployments of the IBM ECM platform, Adjacent has recently won multiple awards for Case Management solutions. Adjacent has extensive and proven experience with all aspects of ECM.

## **Adlib** 1218

**[www.adlibsoftware.com](http://www.adlibsoftware.com)**

Adlib, an IBM Business Partner, is the leading expert in document-to-PDF transformation, delivering seamless integration with IBM FileNet in order to reduce the financial exposure and risk of non-compliance with regulatory agencies; reduce IT costs by centralizing document transformation; and leverage content-to-PDF as a shared service across the enterprise. [www.adlibsoftware.com](http://www.adlibsoftware.com)

## **Advent Global Solutions, Inc.** 327

**[www.adventglobal.com](http://www.adventglobal.com)**

Advent Global, an IBM Premier Business Partner, specializes in IBM InfoSphere Optim decommissioning. Advent focuses on business-driving solutions that meet the demands of growth-oriented businesses and mandated regulations. Advent partners with global leaders like IBM, SAP, Oracle, NetSuite and Kony to offer enterprise systems, information governance, mobility and cloud-based platforms.

## **Appfluent Technology, Inc** 1213

**[www.appfluent.com](http://www.appfluent.com)**

Appfluent gives IT unprecedented visibility into usage and performance of data warehouse and BI systems. Appfluent identifies which data is used / not used, determines BI system performance and causes of performance issues. With Appfluent, enterprises address exploding data growth and performance issues and realize the economies of Hadoop.

## **Application Consulting Group** 1205

**[www.acgi.com](http://www.acgi.com)**

An IBM Premier Business Partner, ACG specializes in providing Performance Management solutions to Fortune 500 companies, primarily in Sales, Marketing and Finance. Our team delivers technical expertise and strategic planning services. The author of the TM1 Rules Guide®, ACG's consulting team has deep expertise in IBM/Cognos TM1 technology ([www.acgi.com](http://www.acgi.com) 973.898.0012).

## **Arcogent** 1408

**[www.arcogent.com](http://www.arcogent.com)**

An IBM Premier Business Partner, Arcogent specializes in tailor-made business analytics solutions, providing clients with enterprise-wide success in budgeting, forecasting and analysis. While enabling organizations to fully utilize Cognos TM1 capabilities and Netezza's advanced big data analytics, our experienced consulting team is dedicated to providing exceptional support and professionalism.

## **Breakaway Technologies, inc.** 1207

**[www.breakaway-inc.com](http://www.breakaway-inc.com)**

Breakaway Technologies has been helping companies develop business intelligence and business performance management solutions that dramatically improve enterprise-wide results for over a decade. Leveraging state-of-the-art reporting, planning and consolidation applications, we deliver superior business solutions that help our clients improve their business processes, reduce risk and gain competitive advantage.

## **BTRG** 320

**[www.btrgroup.com](http://www.btrgroup.com)**

BTRG focuses on governance of Big Data through use of IBM's industry leading Information Management and Industry Solutions offerings. BTRG helps customers lower storage costs, improve application deployment, lower auditing costs, minimize application upgrade timelines, improve performance, protect sensitive data, and improve eDiscovery, policy management and process execution.

## Exhibitors *continued*

### **Business Performance Management Northwest**

**1409**

**[www.bpmnw.com](http://www.bpmnw.com)**

BPM Northwest delivers end-to-end Business Analytics solutions with industry best-practices. We have deep experience with Data Modeling, ETL, TM1 - Financial Performance Management, Cognos Business Intelligence, SPSS, and PureSystems, evidenced by our IBM Premier Business Partner Status, 50+ IBM certifications, and the coveted TM1 Gold Accreditation. Contact BPM Northwest for your next project.

### **CA Technologies**

**229-01**

**[www.ca.com](http://www.ca.com)**

CA Technologies provides IT management solutions that help customers manage and secure complex IT environments to support agile business services. Organizations of all sizes leverage CA Technologies software and SaaS solutions to accelerate innovation, transform infrastructure and secure data and identities, from the data center to the cloud.

### **CarpeDatum Consulting**

**1011**

**[www.carpdatuminc.com](http://www.carpdatuminc.com)**

Imagine Cognos TM1 users using a friendly, user-guided front-end experience to enter/colaborate on budgets, forecasting, workforce planning, taking full advantage of Cognos TM1 software. Enterprises Services offers an application development platform allowing the best of both. Publish views, subsets, processes and Cognos TM1 API functions as XML/JSON web services.

### **CDW**

**1311**

**[www.cdw.com](http://www.cdw.com)**

CDW is a leading provider of technology solutions for businesses of all sizes. CDW features dedicated account managers who help customers choose the right technology products and services to meet their needs. The company's solution architects offer expertise in designing, consulting and implementing service with Business Intelligence and Analytics strategies.

### **Compact Solutions**

**122**

**[www.compactbi.com](http://www.compactbi.com)**

Compact Solutions provides innovative software and services for integrated metadata management, ETL testing automation and NoSQL data analytics solutions for Big Data environments.

- Metadata integration solution, MetaDex™, provides seamless metadata integration between disparate platforms
- Batch testing automation solution, TestDrive™, automates ETL testing tasks, dramatically reducing testing time.

### **Compuware Corporation**

**322**

**[www.compuware.com](http://www.compuware.com)**

Compuware Corporation, the technology performance company, provides software, experts and best practices to ensure the world's most important technologies work well and deliver value. Compuware customers include 46 of the top 50 Fortune 500 companies and 12 of the top 20 most visited U.S. web sites. Learn more: [compuware.com](http://compuware.com).

### **Consist Software Solutions, Inc.**

**227-01**

**[www.consist.com](http://www.consist.com)**

ConsistADS is an innovative and total solution which rapidly migrates applications from Adabas/Natural platform to IBM DB2 z/OS. ConsistADS is a fully automated conversion thus significantly reducing risk and providing a significant ROI. ConsistADS provides web enablement, GUI'd screens and a platform for Business Intelligence.

### **Crawford Technologies**

**1128**

**[www.crawfordtech.com](http://www.crawfordtech.com)**

Crawford Technologies provides streamlined document management solutions to enhance an organization's usage of output and print in communicating with internal and external clients. CrawfordTech provides IBM CMOD, P8 and Content Navigator customers with the ability to output from or commit content to these repositories, with superior speed and extensive functionality.





**Daeja Image Systems, Ltd., an IBM company 1126**

**[www.daeja.com/ibm/](http://www.daeja.com/ibm/)**

Daeja are the developers of ViewONE Pro Java Edition and upcoming ViewONE Pro HTML Edition. ViewONE Pro Java is OEM'd into FileNet P8, P.I.E and IBM Content Navigator, the flagship viewer offers a Module-on-Demand™ facility to increase functionality through a suite of modules including mark-up annotations, permanent redactions and Document Streaming.

**Data41 1203**

**[www.data41.com](http://www.data41.com)**

Data41, an IBM Premier Business Partner, specializes in providing solutions that enhance corporate performance. Our solutions incorporate BI, Performance Management, Big Data, Predictive Analytics, and Mobile Computing which allows our clients more opportunity to evaluate and optimize their performance in the areas of Finance, Operations, Marketing, Sales, and Executive decisions.

**Datcert, Inc. 1016**

**[www.datcert.com](http://www.datcert.com)**

Datcert is the premier provider of enterprise legal management software and services for corporate legal, compliance, and risk departments and claims organizations. Datcert's offerings include its patent-pending technology platform, Passport®, solutions to manage legal matters, mitigate risk, and control legal and claims spend, and innovative business intelligence offerings.

**DBI Software 321**

**[www.DBISoftware.com](http://www.DBISoftware.com)**

Optimize DB2 LUW Performance, IT Costs, and Productivity. DBI Software provides Breakthrough Performance Results and instant ROI for organizations having the most demanding performance requirements and discriminating preferences. Learn the rest of the story by visiting our booth. [www.DBISoftware.com](http://www.DBISoftware.com) 1-866-773-8789 or 1-512-249-2324

**Dell 221**

**[www.dell.com/software](http://www.dell.com/software)**

Our simple yet powerful software combined with Dell hardware and services provide scalable, integrated solutions to drive value and accelerate results. Whether it's Windows infrastructure, the cloud and mobile computing, or networks, databases and business intelligence, we dramatically reduce complexity and risk to unlock the power of IT. Learn more at [www.dell.com/software](http://www.dell.com/software).

**Direct Computer Resources, Inc. 521**

**[www.DataVantage.com](http://www.DataVantage.com)**

Direct Computer Resources' DataVantage® software allows you to mask, manage and migrate your data in z/OS and distributed environments. DataVantage Data Masking Express offers independent masking functionality that protects data while managing mainframe costs. And only DataVantage Global has been designated qualified anti-terror technology by the Department of Homeland Security.

**Document Access Systems 1220**

**[www.documentaccess.net](http://www.documentaccess.net)**

Since 1991, Document Access Systems (DAS) has been assisting our customers in reducing costs, improving productivity and managing risk. We do this by combining an understanding of business needs with an expertise in Enterprise Content Management. DAS is a Software Value Plus Business Partner for IBM FileNet ECM and Smarter Cities.

**eCapital Advisors 1112**

**[www.ecapitaladvisors.com](http://www.ecapitaladvisors.com)**

eCapital Advisors is an award winning company specializing in business analytics, performance management and big data solutions. The eCapital Advisors team of experts uses proven, best-in-class technology to enable better business decisions in organizations big and small nationwide. [www.ecapitaladvisors.com](http://www.ecapitaladvisors.com)

**EDAC Systems, Inc. 1327**

**[www.edacsystems.com](http://www.edacsystems.com)**

For over twenty years, EDAC has combined its integration expertise with products from "Best of Business" OEMs to provide innovative, cost effective, and reliable solutions for Investigative Case Management; Evidence Tracking; Document & Records Management; Document Capture; eFOIA / Correspondence Tracking; and Personal Identity Information Protection.



- |   |   |
|---|---|
| <p><b>Fairfax Data Systems</b> <span style="float: right;"><b>1117</b></span><br/> <b>www.fairfaxdatasystems.com</b><br/>                     As experts on IBM ECM solutions, Fairfax Data Systems offers comprehensive consulting services that enhance organizational performance, governance and outcomes. Successful in both public and private sectors, we assist clients implement, modernize and maximize IBM ECM systems across different content environments. Learn more at <a href="http://www.fairfaxdatasystems.com">www.fairfaxdatasystems.com</a> or email us at <a href="mailto:sales@fairfaxdatasystems.com">sales@fairfaxdatasystems.com</a></p> | <p><b>Genus Technologies</b> <span style="float: right;"><b>1021</b></span><br/> <b>www.genusllc.com</b><br/>                     Genus Technologies develops social content and rich media management solutions that leverage IBM Enterprise Content Management (ECM) and IBM Collaboration Software. Genus' digital asset management solution, Genus Media Upshot, is a cross-industry solution that offers customizable and versatile foundations necessary for social ECM initiatives. Visit <a href="http://www.genusllc.com">www.genusllc.com</a> and <a href="http://www.mediaupshot.com">www.mediaupshot.com</a>.</p> |
| <p><b>Findability Sciences</b> <span style="float: right;"><b>220</b></span><br/> <b>www.findabilitysciences.com</b><br/>                     We are a full-service Big Data technology company. We are comprised of experienced technologists, data-scientists, information architects and innovators. Our solutions - Findability Platform &amp; Findability Index consistently deliver market insights from creatively and rapidly combining public, social and internal organizational data.</p>  | <p><b>Global Knowledge</b> <span style="float: right;"><b>1208</b></span><br/> <b>www.globalknowledge.com</b><br/>                     Global Knowledge is the worldwide leader in IT and business skills training. As one of the largest IBM Global Training Providers that is purely focused on skills development, our courses span the breadth of the IBM portfolio and include real-world scenarios taught by real-world experts.</p>  |
| <p><b>Fourth Millennium Technologies</b> <span style="float: right;"><b>319</b></span><br/> <b>www.fmtusa.com</b><br/>                     Fourth Millennium Technologies, Inc. (FMT) , is an IBM Premier Business Partner specializing in Information Management software and services. Our team of senior consultants provides the leadership and guidance to design, develop and implement your Data Warehouse and OLTP environments, MDM initiatives, and ETL processes and jobs.</p>   | <p><b>GT Software</b> <span style="float: right;"><b>1119</b></span><br/> <b>www.gtsoftware.com</b><br/>                     For 30 years GT Software has helped organizations derive the greatest business benefit from their mainframe investments by delivering cost-effective enterprise modernization, migration and data access solutions.</p>  |
| <p><b>Fusion-io</b> <span style="float: right;"><b>1307</b></span><br/> <b>www.fusionio.com</b><br/>                     Fusion-io is the developer of a next generation storage memory platform that significantly improves the processing capabilities within a datacenter by relocating active data from centralized storage to the server where it is processed. Fusion's integrated solutions significantly increase datacenter efficiency and offer enterprise grade performance, reliability, availability and manageability.</p>  | <p><b>Guidewire Software, Inc.</b> <span style="float: right;"><b>228-02</b></span><br/> <b>www.guidewire.com</b><br/>                     The Guidewire Insurance Suite™ provides the flexible, core systems essential for the mission-critical operations of property/casualty carriers competing in today's market: underwriting, policy administration, billing and claims. The suite was designed using a modular approach, enabling carriers to select individual applications or a pre-integrated set, driven by their requirements and priorities.</p>  |
| <p><b>Fuzzy Logix</b> <span style="float: right;"><b>419</b></span><br/> <b>www.fuzzyl.com</b><br/>                     Fuzzy Logix is a market leader in analytic solutions. We are revolutionizing analytics with our in-database and GPU-based analytic software solutions. Fuzzy Logix offers software and consulting services to help you realize powerful benefits that are only possible to achieve by leveraging analytics.</p>   | <p><b>HLS Technologies, Inc.</b> <span style="float: right;"><b>224</b></span><br/> <b>www.hlstechnologies.com</b><br/>                     Express Hints provides support for setting both Dynamic and Static SQL. For Dynamic SQL both capture of cached SQL and Explain data is provided. Both the setting and freeing of hints is supported.</p>  |

# Think **BIG** with **IBM data magazine**

- **BIG** Expertise
- **BIG** Insights
- **BIG** Possibilities

In-depth insights from leading experts on information strategy, big data & analytics, enterprise database, information integration & governance, data security and master data management.



For breaking news & stimulating content:

[ibmdatamag.com/subscribe](http://ibmdatamag.com/subscribe)



## Did you know IBM Security offers one of the world's broadest, most advanced and integrated enterprise security product and service portfolios?

IBM Security's portfolio, supported by world-renowned IBM X-Force® research and development, provides the security intelligence to help organizations holistically protect their people, data, applications, and infrastructure. IBM now offers solutions for security intelligence, extending security intelligence with Big Data, identity and access management, database security, application development, risk management, endpoint management, network security and more. This enables organizations to more effectively manage risk and implement integrated security solutions for mobile, cloud, social media and other enterprise business architectures. IBM operates one of the world's broadest security research and development and delivery organizations comprising 10 security operations centers, 10 IBM Security Research Centers and 15 software security development labs. IBM monitors 15 billion security events per day in more than 130 countries.

For more information please visit [www.ibm.com/security](http://www.ibm.com/security) or [securityintelligence.com](http://securityintelligence.com).

Don't forget to stop by the IBM Security Systems Booth 526!



Scan the QR code to download a copy of the recently published **IBM X-Force 2013 Mid-Year Trend and Risk Report**.





### **i4C Analytics**

**1013**

**[www.i4canalytics.com](http://www.i4canalytics.com)**

In a world of numbers, we provide you the ones upon which you can base your decisions. We deliver Advanced Analytics Applications for specific industry and business processes, in order to enable the use of Predictive Analytics automatically and in real time by any organization and any user.

### **icon Systemhaus GmbH**

**509**

**[www.icongmbh.de](http://www.icongmbh.de)**

DOPIx is one of the most powerful Multi Channel Customer Communication Suites and high-end market leader in Germany. DOPIx supports interactive document creation, on-demand document creation and high-volume batch processing in one product. Insurance, banking and government are the main target customers. DOPIx can also directly replace IBMs ASF.

### **Image Process Design, Inc.**

**1222**

**[www.ipdsolution.com](http://www.ipdsolution.com)**

IPD is a business process improvement company providing solutions for Insurance companies. Industry specific solutions, leveraging IBM platforms, optimize business process outcomes; both revenue enhancing capabilities and cost reductions. IPD improves customer service levels, lowers policy turnover, reduces claims costs, enhances competitiveness and agility and improves productivity and cycle times.

### **ImageSource**

**1223**

**[www.imagesourceinc.com](http://www.imagesourceinc.com)**

Full-service ECM integrator, ImageSource ensures successful outcomes by employing time-tested methodologies and a host of services including consulting, integration, development, and support. We have a professional services team dedicated to IBM technologies and multiple certifications. We provide unmatched technical depth and industry-specific expertise in Financial Services, Healthcare, Manufacturing and Transportation.

### **IMC**

**1014**

**[www.IMC.com](http://www.IMC.com)**

IMC will demonstrate their DocPro Solution Framework Accelerators for applications such as Customer Complaint Escalation and Reporting for financial services, Contracts Management and Vendor Fraud Prevention. IMC Subject Matter Experts will also showcase their Information Lifecycle Governance capabilities and methodologies that support planning and executing the deployment of IBM's platform.

### **InfoMedia Systems Group**

**1325**

**[www.infomediagroup.ca](http://www.infomediagroup.ca)**

(Knowledge Genus Corporation doing business as InfoMedia Systems Group) InfoMedia Systems Group (ISG) provides a complete range of IBM Information Management and Social Collaboration products and services. ISG's cloud-based FileNet solutions excel at providing secure image, social media and content services. Our flagship product, SMC4, is an industry leader in social media compliance.

### **Informative Graphics**

**1020**

**[www.infograph.com/ibm](http://www.infograph.com/ibm)**

A leader in viewing, collaboration and redaction technology, IGC has built integrations to IBM FileNet P8, IBM Content Navigator and other IBM applications that use web services. Together, IGC and IBM offer customers ways to maintain document security, improve review cycle times and speed work flows.

### **InfoTrellis**

**325**

**[www.infotrellis.com](http://www.infotrellis.com)**

InfoTrellis aims to help organizations make significant improvements in their Master Data management by offering breakthrough business solution ideas. A premier MDM consulting company, InfoTrellis offers only a lean, potent lineup of services and products. InfoTrellis prides itself on being a catalyst in its clients' continuous growth and success.



- |  |   |
|--|---|
| <p><b>Integro, Inc.</b> <span style="float: right;"><b>916</b></span><br/> <b>www.integro.com</b><br/>                     Integro Email Manager (IEM) offers value-based email archiving for Lotus/Exchange/Office365, allowing for defensible disposal and records management of email, while reducing cost and risk. An IBM Premier Business Partner, Integro is also a leading expert in IBM's ECM and Information Lifecycle Governance solutions, providing consulting, migrations, implementation, and managed services.</p> | <p><b>LearnQuest</b> <span style="float: right;"><b>1212</b></span><br/> <b>www.learnquest.com</b><br/>                     As a Global Training Provider, LearnQuest provides complete IBM software and systems training solutions. Blended learning enhances our approach by customizing training to meet client-specific needs around products and tools, development methodologies, and client processes. Providing students with information that is meaningful to job performance with the support they need helps them become skilled users.</p> |
| <p><b>iSoftStone</b> <span style="float: right;"><b>228-02</b></span><br/> <b>www.isoftstone.com</b><br/>                     iSoftStone, a global leader in IT services, is the partner of choice for clients worldwide. Our end-to-end offerings include consulting and solutions, IT services, and BPO services. iSoftStone acts as a strategic partner across multiple industry verticals including Communications, Technology, Financial Services, Insurance, Banking, Retail, and Manufacturing, etc.</p>                    | <p><b>Locus Solutions Inc</b> <span style="float: right;"><b>1404</b></span><br/> <b>www.locussolution.com</b><br/>                     Locus is a strategy and technology consultancy that helps leading companies use Business Analytics solutions to achieve competitive advantage and operational excellence.</p>   |
| <p><b>ITGAIN, Inc</b> <span style="float: right;"><b>420</b></span><br/> <b>www.itgain-is.de/en</b><br/>                     ITGAIN, Inc. is a DB2 company and advanced IBM Business Partner whose mission is to deliver world-class software that enhances productivity and ensures optimal access to corporate database assets. ITGAIN's Speedgain for DB2 LUW provides real time and historical monitoring of database performance issues.</p>  | <p><b>Lodestar Solutions</b> <span style="float: right;"><b>1012</b></span><br/> <b>www.lodestarsolutions.com</b><br/>                     Lodestar Solutions' clients have realized the benefits of Corporate Performance Management (CPM) which includes planning, measuring and monitoring, reporting and analysis.</p>  |
| <p><b>KINETEK CONSULTING</b> <span style="float: right;"><b>1407</b></span><br/> <b>www.kinetekconsulting.com</b><br/>                     Kinetek designs and sells solutions for organizations to manage costs and increase profitability in the post-sequestration era. Organizations that work with the federal government or otherwise need to manage internal costs benefit from working with Kinetek.</p>   | <p><b>LPA Systems, Inc.</b> <span style="float: right;"><b>1111</b></span><br/> <b>www.lpa.com</b><br/>                     A 2013 Beacon Award Finalist, LPA Systems is an IBM Premier Business Analytics Partner that helps healthcare, hospitality and other organizations harness the power of information through business intelligence, predictive analytics, financial performance management and Pure Data solutions that ease the acquisition, sharing and flow of information across the enterprise.</p>                                      |
| <p><b>Kingland Systems</b> <span style="float: right;"><b>507</b></span><br/> <b>www.kingland.com</b><br/>                     360 Data Enterprise Hub foundation includes data models for securities, entities, and hierarchy management. It can be configured to leverage Kingland's end-to-end pattern for MDM and specializes in security master, hierarchy management, and legal entity data needs. Enterprise Hub provides features and functionality to implement data governance and quality practices.</p>                | <p><b>Mainline Information Systems</b> <span style="float: right;"><b>912</b></span><br/> <b>www.mainline.com</b><br/>                     Trusted since 1989, Mainline provides comprehensive IT solutions to over 4,000 satisfied customers. As an industry leader, Mainline delivers hardware, software and application solutions, as well as a comprehensive suite of services and financing options for all your technology needs. <a href="http://www.mainline.com">www.mainline.com</a></p>  |





**MapR Technologies** **226**  
**www.mapr.com**  
MapR delivers on the promise of Hadoop with a proven, enterprise-grade platform that supports many mission-critical and real-time production uses. MapR brings unprecedented dependability, ease-of-use, and world-record speed to Hadoop, NoSQL, database and streaming applications in one unified Big Data platform. Visit [www.MapR.com](http://www.MapR.com) to download MapR or learn more.

**McLaren Software** **1230-02**  
**www.mclarensoftware.com**  
McLaren Software helps organizations ensure the integrity of their asset information, providing secure and controlled collaboration and access to engineering documentation throughout the asset lifecycle. McLaren Software has been an IBM Business Partner since 2003. McLaren Enterprise has been certified for IBM FileNet P8 for every release since 2003. [www.mclarensoftware.com](http://www.mclarensoftware.com).

**Mellanox Technologies** **1319**  
**www.mellanox.com**  
Mellanox Technologies is a leading supplier of end-to-end InfiniBand and Ethernet interconnect solutions and services for servers and storage. Mellanox interconnect solutions increase data center efficiency by providing high throughput and low latency and delivering data faster to applications. Mellanox offers interconnect products including adapters, switches, software and cables. [www.mellanox.com](http://www.mellanox.com).

**Miria Systems Inc** **1224**  
**www.miriasystems.com**  
Managed\$Pay is a web-based, enterprise capture & case management application built on the world-class IBM Datacap and FileNet P8 infrastructure to streamline the Receipt to Payment process.

**MRC Information Technology, Inc** **1225**  
**www.mrcit.com**  
MRCIT is a leading IBM Business Partner specializing in Enterprise Content Management products such as Datacap, FileNet P8, CMOD and Advanced Case Manager. With turnkey solutions catering to multiple verticals MRCIT enables your organization convert paper based processes to electronic in record time.

**NeoSystems** **1405**  
**www.neosystemscorp.com**  
Performance Models for Government Contractors, powered by IBM Cognos TM1, gives your business a foundation for conquering budgeting, forecasting, and project planning challenges. Included are models for developing provisional rate plans, forward pricing proposals, and both corporate (indirect) and project (direct) rate plans to help your company grow ahead.

**Newcomp, Inc.** **1402**  
**www.newcomp.com**  
Newcomp is an IBM Business Premier Partner that provides IBM Business Analytics solutions, specializing in the design and implementation of financial planning, operational reporting and analysis and executive dashboarding tools.

**Notable Solutions** **1317**  
**www.notablesolutions.com**  
Notable Solutions is a leading provider in the emerging market of leveraging mobile and Multi-Function Devices (MFD) to support distributed capture into enterprise content management (ECM) systems. Simplify the exchange of information, streamline workflows and extend business applications to the front panel of your MFD with NSi.

**Obsidian Strategics, Ltd.** **519**  
**www.obsidianstrategics.com**  
The Obsidian Longbow™ family of products extend InfiniBand clusters over Campus, Metro, Regional or Global Area optical networks enabling unparalleled DR applications over long-distance, high-bandwidth video transmission and efficient movement of Big Data sets to remote compute or storage resources. Integrated features include: routing, encryption, authentication and dark fiber optimization.

**PerformanceG2, Inc.** **1401**  
**www.performanceg2.com**  
PerformanceG2, Inc. is a full-service performance management consultancy and Premier IBM Cognos Business Analytics partner. We provide Cognos software, training and consulting solutions. For more information, visit <http://performanceg2.com>.

## Exhibitors *continued*

### **Peritas Solutions Ltd.**

**1209**

**[www.weareperitas.com](http://www.weareperitas.com)**

Peritas Solutions Ltd is a Performance Management Consulting company specializing in Business Intelligence, Data Warehouse and Budgeting/ Planning/ Forecasting/ Consolidation projects. With offices in Calgary, Vancouver, Toronto, and Newport Beach, we have a solid resource pool of consultants with extensive expertise in deployment of Business Intelligence and Performance Management solutions.

### **Persistent Systems Inc**

**418**

**[www.persistentssys.com](http://www.persistentssys.com)**

Persistent Systems is a global company specializing in software product and technology services. Persistent has been at the forefront of the Big Data revolution. We are a major Big Data Business Partner of IBM, providing services and solutions on top of IBM's Big Data platform such as BigInsights™, Netezza® & Streams.

### **Prodagio Software**

**920**

**[www.prodagio.com](http://www.prodagio.com)**

As leaders in Accounts Payable and CLM software solutions, Prodagio Software has been automating and enhancing business processes for some of the world's largest companies and organizations for over 15 years. Prodagio's customers benefit from complete visibility into critical business functions, reduced operational costs, stronger internal controls, and rapid payback.

### **Prolifics**

**918**

**[www.prolifics.com](http://www.prolifics.com)**

Prolifics, an IBM Premier Business Partner, provides end-to-end Enterprise Content Management and Business Analytics solutions for businesses around the world, delivering business insights that improve performance. Leveraging over 35 years of experience and leading IBM technologies, Prolifics specializes in architectural advisement, design, development, and deployment of custom solutions.

### **QFlow Systems, LLC.**

**1017**

**[www.qflow.com](http://www.qflow.com)**

Q-Action® is an ECM software package that integrates multiple IBM products with pre-built functions tailored to unique requirements using simple configuration screens. Integrated products include FileNet Content Manager, FileNet Image Manager, FileNet Capture, IBM Content Collector, eDiscovery, and IBM Enterprise Records. Q-Action runs on personal computers, tablets and mobile devices.

### **Quark Software Inc.**

**1019**

**[www.quark.com](http://www.quark.com)**

Together, Quark Enterprise Solutions and IBM Enterprise Content Management offer smart customer communication solutions for financial research reports, customer on-boarding material, and banking & insurance documents. These solutions combine high fidelity layout and structured content to automate the delivery of customized, intelligent communications across print, the Web, and digital media.

### **QUBEdocs**

**1406**

**[www.qubedocs.com](http://www.qubedocs.com)**

QUBEdocs automates the creation of comprehensive, meaningful, web-based documentation for even the most complex Cognos TM1 models – enhancing support and reducing risk when making changes. With QUBEdocs, it's easy to understand the relationships and data-flows inherent within models, troubleshoot issues, conduct impact analysis and track changes over time or between environments.

### **ReadSoft**

**1216**

**[www.readsoft.com](http://www.readsoft.com)**

Companies in the banking, finance, healthcare and insurance industries trust ReadSoft to automate their high volume, business-critical document processes. Working with a powerful portfolio of IBM software applications, ReadSoft's scalable solution automates document processing across all input channels, allowing organizations to lower costs, achieve higher productivity and increase service levels.



**Revolution Analytics** **914**  
**www.revolutionanalytics.com**  
Revolution Analytics delivers advanced analytics software at half the cost of existing solutions. By building on open source R—the world’s most powerful statistics software—with innovations in big data analysis, integration and user experience, Revolution Analytics meets the demands and requirements of modern data-driven businesses.

**RGB Projects Inc.** **1130**  
**www.rgbprojects.com**  
RGB Projects’ (RGB) Mobile Case Platform extends your investment in IBM FileNet to tablets and smartphones. We are a leading innovator of robust solutions for Enterprise Content Management, Business Process Management and IBM Case Manager. RGB’s solutions provide our clients with reduced operating costs, increased competitive advantage and delighted customers.

**Roambi** **1210**  
**www.roambi.com**  
Roambi Analytics™ empowers business users by transforming the critical information they use into stunning visualizations delivered to their iPhone or iPad - anytime, anywhere. Designed for connection with many BI products and data sources, Roambi provides businesses of all sizes the ability to quickly share the information business users need.

**RS Computer Associates** **310**  
**www.rscompass.com**  
RSCA provides experience and focus to ensure success: Over 20 years in Enterprise Content Management; Consistent management and leadership throughout; Exclusive focus on IBM FileNet suite of products; IBM Premier Business Partner with the highest certification; Professional, passionate, with a remarkable track record.

**RTTS** **409**  
**www.rtts.com**  
QuerySurge is enterprise software built specifically to automate the testing of data warehouses and the ETL process. QuerySurge enables you to increase the level of quality within your data warehouse by analyzing and pinpointing any differences to find bad data throughout the ETL process. Certified with IPDA (Netezza).

**Seclore** **1323**  
**www.seclore.com**  
Information Rights Management protects information by defining usage rights, who can access information, for what purpose, when and where. Best of all since security is attached to information, protection prevails even after information moves out of organisation.

**SEGUS & SOFTWARE ENGINEERING** **128**  
**www.segus.com**  
SEGUS Inc stands for DB2 for z/OS solutions and services. Our DB2 tools optimize DB2 performance, guarantee precisely-maintained databases, reduce outages. By predicting static/dynamic SQL performance degradations, analysing & tuning Workloads, virtualization, managing BIND/REBIND processes, ensuring database recoverability, SEG tools support the high availability demands of today’s 24/7 businesses.

**Servery, Inc** **515**  
**www.servery.com**  
Servery’s new hyper-efficient class of USA designed and manufactured PowerLinux Cleantech Servers® are engineered from the ground up using our patented technology that literally pays for itself by delivering a compute fabric that offers extremely high I/O, high density and high scalability solutions.

**Snowbound Software** **922**  
**www.snowbound.com**  
VirtualViewer® Our HTML5 document viewer works in all browsers (including IE 6 and up) and integrates with your IBM/FileNet application(s). Provides a zero footprint universal UI to quickly and securely view, annotate, redact and manipulate documents. Streamline processes with text searching, tabbed windows, thumbnails, and page manipulation. Supports PDF, Word, Excel, AFP, TIFF and more.

**Softech & Associates, Inc.** **1227**  
**www.softechis.com**  
Softech & Associates provides flexible client configurable document imaging and workflow solutions and tools that allow IBM ECM customers to better leverage their investment. Softech provides consulting services expertise in system installation and optimization, release upgrades, volume image conversions, high-speed document import/export, platform, data and application migrations and customer support.

### **Splunk, Inc**

**227-02****[www.splunk.com](http://www.splunk.com)**

Splunk Inc. provides the platform for machine data™. Splunk® software collects, indexes and harnesses machine-generated big data coming from the websites, applications, servers, networks, sensors and mobile devices that power business. Over 6,000 customers use Splunk Enterprise to gain Operational Intelligence to improve uptime, reduce cost and mitigate cybersecurity risk.

### **SYSCOM, Inc.**

**1018****[www.syscom.com](http://www.syscom.com)**

IBM Premier Business Partner SYSCOM provides technical services and value-add products with an emphasis on enterprise-wide workflow, content management, and analytics. Stop by booth 1018 to see Case Management solutions with IBM products P8 and CM8. Also see unique and innovative technology products for Content Analytics and SOA Content Services.

### **Teradata**

**1114****[www.teradata.com](http://www.teradata.com)**

As a global leader in data warehousing and analytic technologies, Teradata solutions make smart companies smarter. Teradata gives companies the people, technology, innovation and a world-class network of customers and partners enabling them to gain competitive advantage to master their markets. With Teradata, the smartest wins. Learn more at [teradata.com](http://teradata.com)

### **The Dayhuff Group**

**1124****[www.dayhuffgroup.com](http://www.dayhuffgroup.com)**

The Dayhuff Group focuses on optimizing your business processes, applications and productivity by creating trusted information from your structured and unstructured data. Specializing in Business Intelligence and Enterprise Content Management, we are experts in processing consulting, application development and systems integration and support. Leverage your business data for innovation.

### **Vega ECM Solutions**

**1115****[www.vegaecm.com](http://www.vegaecm.com)**

Imagine accessing your business data, from any source, in a single intuitive interface. Structured ECM content, e-mails, mainframe data, all displayed in an intuitive view that your business truly understands. vSpace is vendor agnostic, highly configurable, scalable, and affordable. vSpace creates synergy between your IT infrastructure and your business' needs.

### **Viewpointe**

**1121****[www.viewpointe.com](http://www.viewpointe.com)**

Viewpointe® is a leading provider of multibank infrastructure solutions for customers ranging from credit unions to Fortune 100 institutions. Viewpointe's information governance platform, OnPointe®, enables organizations to manage their enterprise content and digital storage via private cloud. Viewpointe offers archive capabilities, end-to-end check image exchange and payments association services. [www.viewpointe.com](http://www.viewpointe.com)

### **Virtusa Corporation**

**323****[www.virtusa.com](http://www.virtusa.com)**

Virtusa provides a broad range of Enterprise Information Management consulting, systems implementation and application outsourcing services through an optimized global delivery model. We focus on delivering improved business results by modernizing, rationalizing and consolidating critical applications that support our clients' core business processes and information needs. Please visit [www.virtusa.com](http://www.virtusa.com)

### **Vision Solutions**

**223****[www.visionsolutions.com](http://www.visionsolutions.com)**

Double-Take Share eliminates manual processes that drain productivity by enabling easy data sharing between databases in real-time. With a simple GUI and support for all popular databases, Double-Take Share captures, transforms and replicates data to address a full spectrum of data sharing needs including BI, reporting, database consolidation, and migration.



**Vormetric**

**517**

**[www.vormetric.com](http://www.vormetric.com)**

Some of the largest and most security conscious organizations and government agencies in the world, including 17 of the Fortune 25, have standardized on Vormetric Data Security technology to provide strong, easily manageable data security. Vormetric Data Security technology has been selected by IBM as the only database encryption solution for DB2 and Informix on Linux™, Unix® and Windows.

**xplore+**

**1214**

**[www.xploreplus.com](http://www.xploreplus.com)**

xploreplus.com extends your IBM Cognos environment by providing a toolset to publish reports to various targets (e.g. SharePoint) and to report on Cognos BI data lineage and metadata. Find out about our products CoRePublisher and CoMetReporter at our booth while enjoying a refreshing Belgian beer! (register at our website)

**Zaloni, Inc.**

**421**

**[www.zaloni.com](http://www.zaloni.com)**

Zaloni is a leading provider of Hadoop software/ services solutions. Zaloni's Bedrock Data Management Platform™ is a unique foundation for building/deploying comprehensive, agile, Hadoop-based implementations that solve complex large-scale data analytic challenges. Fortune 100 companies depend on Zaloni to provide Big Data solutions that deliver speed/performance in an efficient, cost-effective manner.



# IBM Business Partners



|                                      |               |  |               |                                       |               |
|--------------------------------------|---------------|--|---------------|---------------------------------------|---------------|
| Actuate Corporation.....             | 1228          | Guidewire Software, Inc.....           | 228-02        | <b>Roamware, Inc.....</b>             | <b>1316-G</b> |
| Adjacent Technologies, Inc.....      | 1226          | <b>HCL America, Inc.....</b>           | <b>528-G</b>  | <b>Rocket Software, Inc.....</b>      | <b>702</b>    |
| Adlib.....                           | 1218          | HLS Technologies, Inc.....             | 224           | RS Computer Associates.....           | 310           |
| Advent Global Solutions, Inc.....    | 327           | i4C Analytics.....                     | 1013          | RTTS.....                             | 409           |
| <b>Alacrinet.....</b>                | <b>627-G</b>  | icon Systemhaus GmbH.....              | 509           | Seclore.....                          | 1323          |
| <b>Amdocs.....</b>                   | <b>314-G</b>  | Image Process Design, Inc.....         | 1222          | SEGUS & SOFTWARE                      |               |
| Appfluent Technology, Inc.....       | 1213          | ImageSource.....                       | 1223          | ENGINEERING.....                      | 128           |
| Application Consulting Group.....    | 1205          | <b>Imagine Solutions.....</b>          | <b>927-G</b>  | <b>Senturus.....</b>                  | <b>1412-G</b> |
| Arcogent.....                        | 1408          | IMC.....                               | 1014          | Servergy, Inc.....                    | 515           |
| <b>Aviana Global</b>                 |               | InfoMedia Systems Group.....           | 1325          | <b>Shaspa GmbH.....</b>               | <b>114-G</b>  |
| <b>Technologies, Inc.....</b>        | <b>512-G</b>  | Informative Graphics.....              | 1020          | Snowbound Software.....               | 922           |
| Breakaway Technologies, inc.....     | 1207          | <b>Infosys Limited.....</b>            | <b>1314-G</b> | Softech & Associates, Inc.....        | 1227          |
| <b>BSP Software.....</b>             | <b>816-P</b>  | InfoTrellis.....                       | 325           | <b>Sogeti USA LLC.....</b>            | <b>518-G</b>  |
| BTRG.....                            | 320           | Integro, Inc.....                      | 916           | Splunk, Inc.....                      | 227-02        |
| Business Performance                 |               | <b>Intel Corporation.....</b>          | <b>612-P</b>  | <b>Stream Integration.....</b>        | <b>516-G</b>  |
| Management Northwest.....            | 1409          | <b>Ironside Group.....</b>             | <b>812-G</b>  | SYSCOM, Inc.....                      | 1018          |
| CA Technologies.....                 | 229-01        | iSoftStone.....                        | 229-02        | <b>Tata Consultancy Services.....</b> | <b>1303-G</b> |
| <b>Capgemini.....</b>                | <b>522-G</b>  | ITGAIN, Inc.....                       | 420           | Teradata.....                         | 1114          |
| CarpeDatum Consulting.....           | 1011          | KINETEK CONSULTING.....                | 1407          | The Dayhuff Group.....                | 1124          |
| CDW.....                             | 1311          | Kingland Systems.....                  | 507           | Vega ECM Solutions.....               | 1115          |
| <b>CitiusTech Inc.....</b>           | <b>826-G</b>  | LearnQuest.....                        | 1212          | Viewpointe.....                       | 1121          |
| <b>CM Mitchell Consulting.....</b>   | <b>1118-G</b> | Locus Solutions Inc.....               | 1404          | Virtusa Corporation.....              | 323           |
| Compact Solutions.....               | 122           | Lodestar Solutions.....                | 1012          | Vision Solutions.....                 | 223           |
| Compuware Corporation.....           | 322           | LPA Systems, Inc.....                  | 1111          | Vormetric.....                        | 517           |
| Consist Software Solutions, Inc..... | 227-01        | Mainline Information Systems.....      | 912           | xplore+.....                          | 1214          |
| Crawford Technologies.....           | 1128          | MapR Technologies.....                 | 226           | Zaloni, Inc.....                      | 421           |
| <b>Creative Computing, Inc.....</b>  | <b>1116-G</b> | McLaren Software.....                  | 1230-02       |                                       |               |
| <b>CSC.....</b>                      | <b>120-G</b>  | Mellanox Technologies.....             | 1319          |                                       |               |
| Daeja Image Systems Ltd.....         | 1126          | <b>Mer Security.....</b>               | <b>108-G</b>  |                                       |               |
| <b>Dassault Systemes</b>             |               | Miria Systems Inc.....                 | 1224          |                                       |               |
| <b>Americas Corp.....</b>            | <b>124</b>    | <b>Motio.....</b>                      | <b>1206-G</b> |                                       |               |
| Data41.....                          | 1203          | MRC Information Technology, Inc...1225 |               |                                       |               |
| Datacert, Inc.....                   | 1016          | <b>NEC Corporation.....</b>            | <b>116-G</b>  |                                       |               |
| <b>DataClarity Corporation.....</b>  | <b>1403-G</b> | NeoSystems.....                        | 1405          |                                       |               |
| <b>Datawatch Corporation</b>         |               | <b>NetApp.....</b>                     | <b>524-G</b>  |                                       |               |
| .....                                |               | Newcomp, Inc.....                      | 1402          |                                       |               |
| DBI Software.....                    | 321           | <b>NICE.....</b>                       | <b>520-G</b>  |                                       |               |
| Dell.....                            | 221           | Notable Solutions.....                 | 1317          |                                       |               |
| Direct Computer Resources, Inc.....  | 521           | Obsidian Strategics, Ltd.....          | 519           |                                       |               |
| <b>DIYOTTA.....</b>                  | <b>828-G</b>  | <b>Perficient.....</b>                 | <b>818-G</b>  |                                       |               |
| Document Access Systems.....         | 1220          | PerformanceG2, Inc.....                | 1401          |                                       |               |
| eCapital Advisors.....               | 1112          | Peritas Solutions Ltd.....             | 1209          |                                       |               |
| EDAC Systems, Inc.....               | 1327          | Persistent Systems Inc.....            | 418           |                                       |               |
| <b>enChoice, Inc.....</b>            | <b>820-G</b>  | <b>Polycom, Inc.....</b>               | <b>514-G</b>  |                                       |               |
| <b>Ernst &amp; Young.....</b>        | <b>808-P</b>  | Prodagio Software.....                 | 920           |                                       |               |
| <b>Esri.....</b>                     | <b>1410-G</b> | Prolifics.....                         | 918           |                                       |               |
| Fairfax Data Systems.....            | 1117          | <b>Pyramid Solutions.....</b>          | <b>824-G</b>  |                                       |               |
| Findability Sciences.....            | 220           | QFlow Systems, LLC.....                | 1017          |                                       |               |
| Fourth Millennium Technologies.....  | 319           | Quark Software Inc.....                | 1019          |                                       |               |
| <b>Frequenz.....</b>                 | <b>502</b>    | QUBEdocs.....                          | 1406          |                                       |               |
| Fusion-io.....                       | 1307          | <b>QueBIT.....</b>                     | <b>814-G</b>  |                                       |               |
| Fuzzy Logix.....                     | 419           | ReadSoft.....                          | 1216          |                                       |               |
| Genus Technologies.....              | 1021          | Revolution Analytics.....              | 914           |                                       |               |
| Global Knowledge.....                | 1208          | RGB Projects Inc.....                  | 1130          |                                       |               |
| GT Software.....                     | 1119          | Roambi.....                            | 1210          |                                       |               |

## Note:

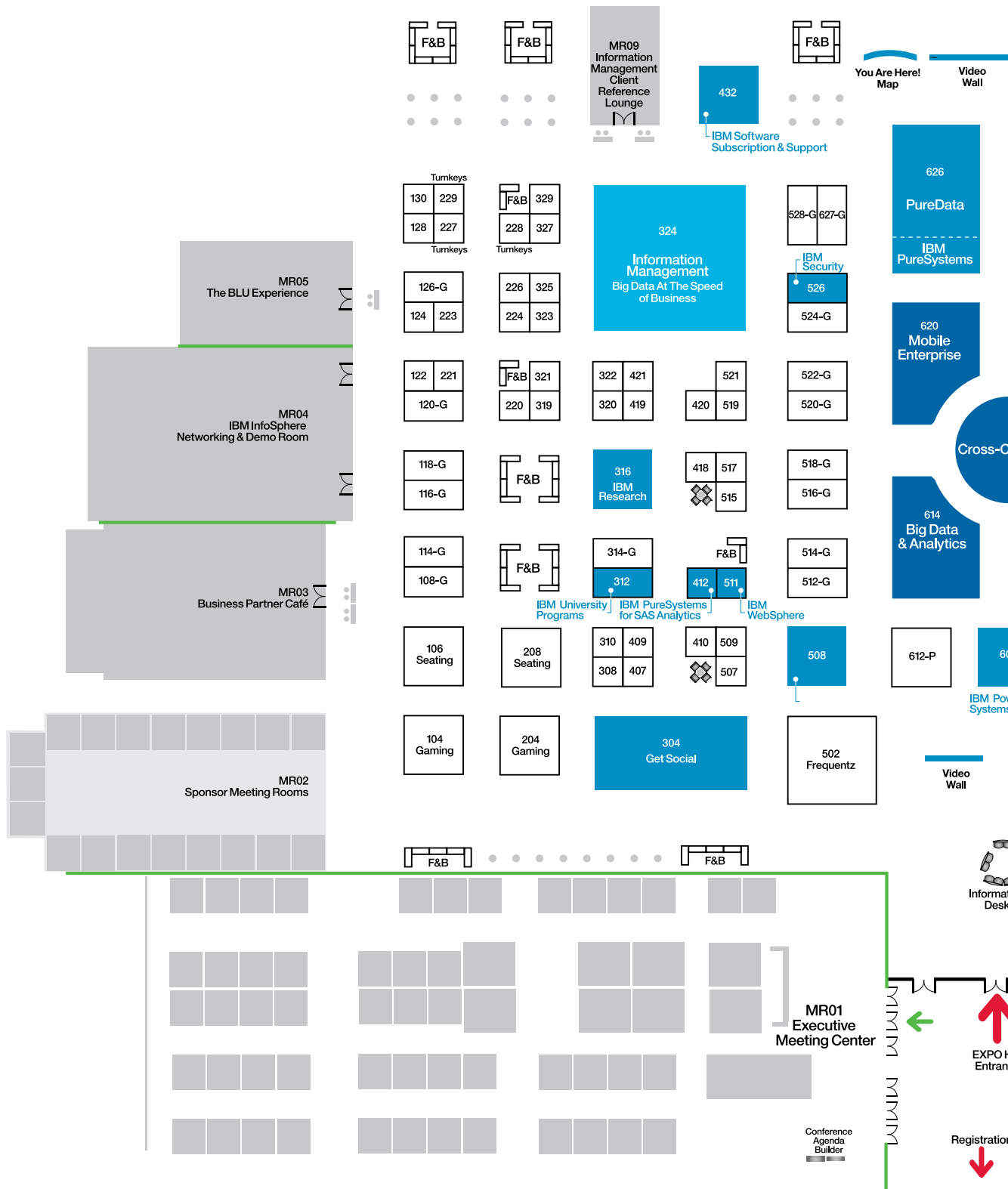
Boldface indicates an EXPO sponsor.

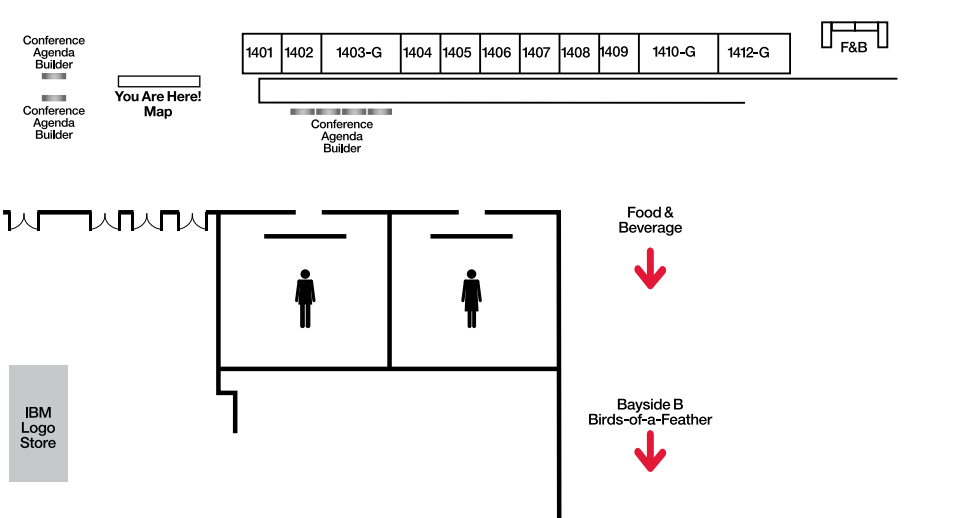
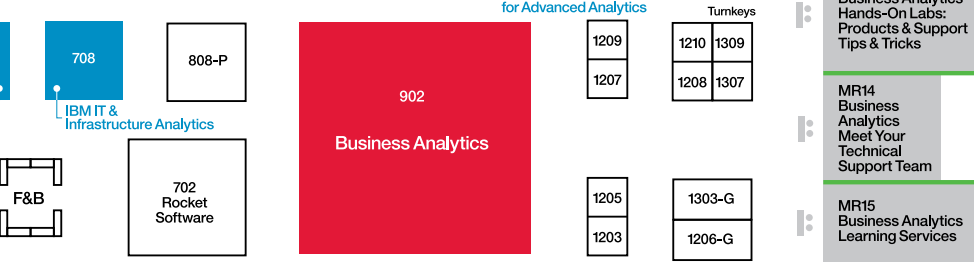
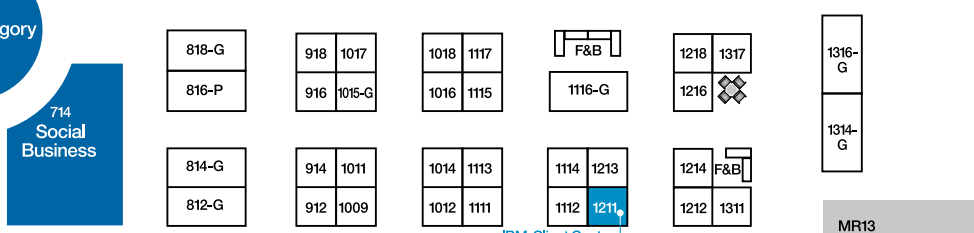
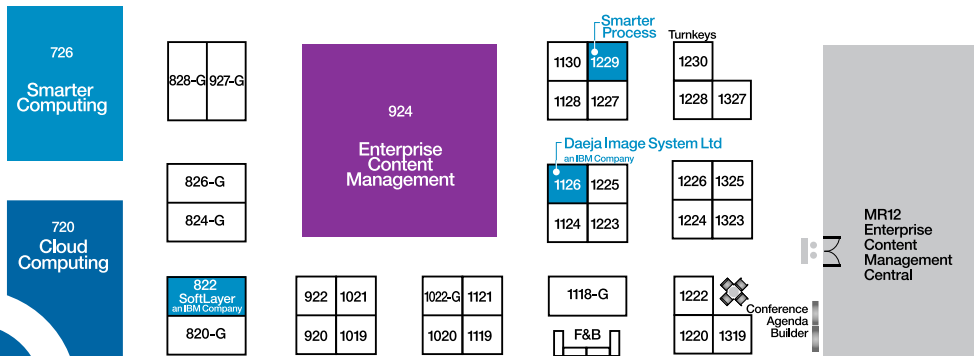
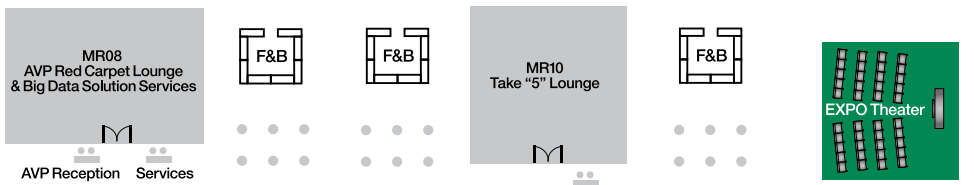
# IBM Exhibitor List

---

|  |      |
|--|------|
| AVP Red Carpet Lounge.....             | MR08 |
| Big Data & Analytics.....              | 614  |
| Big Data Solution Services.....        | MR08 |
| Business Analytics.....                | 902  |
| Business Analytics                     |      |
| Hands on Labs:                         |      |
| Products and Support                   |      |
| Tips & Tricks .....                    | MR13 |
| Business Analytics                     |      |
| Learning Services .....                | MR15 |
| Business Analytics:                    |      |
| Meet Your Technical                    |      |
| Support Team .....                     | MR14 |
| Cloud Computing.....                   | 720  |
| ECM Central.....                       | MR12 |
| Enterprise Content Management.....     | 924  |
| IBM Business Partner Cafe.....         | MR03 |
| IBM IT & Infrastructure Analytics..... | 708  |
| IBM Power Systems .....                | 608  |
| IBM PureData Systems.....              | 626  |
| IBM PureSystems.....                   | 626  |
| IBM PureSystems                        |      |
| for SAS Analytics.....                 | 412  |
| IBM Research.....                      | 316  |
| IBM Security .....                     | 526  |
| IBM Smarter Process .....              | 1229 |
| IBM Software                           |      |
| Subscription & Support.....            | 432  |
| IBM University Programs .....          | 312  |
| IBM WebSphere Application              |      |
| Servers & eXtreme Scale .....          | 511  |
| Information Management .....           | 324  |
| Information Management Client          |      |
| Reference Lounge .....                 | MR09 |
| InfoSphere Demo Room.....              | MR04 |
| Mobile Enterprise.....                 | 620  |
| Smarter Computing.....                 | 726  |
| Social Business .....                  | 714  |
| SoftLayer an IBM company.....          | 822  |
| System z Enterprise Solutions .....    | 508  |
| The BLU Experience.....                | MR05 |

# Getting Around the EXPO





# IBM Product List

|                                       |      |                                      |      |  |      |
|---------------------------------------|------|--------------------------------------|------|--|------|
| Advanced Case Management.....         | 924  | IBM AIX Solution Edition for SPSS .. | 608  | IBM Mobile Application Platform        |      |
| Analytics / Big Data .....            | 726  | IBM Algorithmics.....                | 902  | Management Services,                   |      |
| Big Data Solutions                    |      | IBM and Mobility Wireless Services   | 620  | IBM Mobile Application Development     |      |
| on Linux on Power Systems .....       | 608  | IBM Anti-Fraud Signature Solution .  | 902  | from the Cloud.....                    | 620  |
| Blade Center.....                     | 726  | IBM Application                      |      | IBM Mobile Enterprise Services         |      |
| BLU Acceleration Solution             |      | Management Services.....             | 620  | for managed mobility.....              | 620  |
| Power Systems Edition .....           | MR5  | IBM BI Pattern for                   |      | IBM Mobile Infrastructure Strategy and |      |
| “BLU Acceleration Solution            |      | In-Memory Analysis .....             | 902  | Planning Services, IBM Mobile Strategy |      |
| Power Systems Edition .....           | 324  | IBM Big Data Platform .....          | 526  | Accelerator.....                       | 620  |
| Blueworks Live .....                  | 1229 | IBM BLU Acceleration Solution        |      | IBM MQ .....                           | 508  |
| BM Business Process Manager .....     | 1229 | Power Systems Edition .....          | 608  | IBM Omni-Channel Assessment.....       | 620  |
| Case Foundation .....                 | 924  | IBM Business Analytics               |      | IBM OpenPages.....                     | 902  |
| Case Manager.....                     | 924  | on System z.....                     | 902  | IBM Operational                        |      |
| CICS Transaction Server.....          | 508  | IBM Business Monitor .....           | 1229 | Decision Manager .....                 | 1229 |
| CICS TS Feature Pack                  |      | IBM Business Process Manager .....   | 508  | IBM Operational                        |      |
| for Mobile Extensions.....            | 508  | IBM Capacity Management              |      | Decision Manager .....                 | 508  |
| Cognos.....                           | 316  | Analytics for zEnterprise .....      | 902  | IBM Predictive Asset Optimization      |      |
| Cognos Business Intelligence .....    | MR5  | IBM Case Manager.....                | 316  | Signature Solution.....                | 902  |
| Cognos Business Intelligence .....    | 324  | IBM Case Manager.....                | 1229 | IBM Predictive                         |      |
| Connections Enterprise                |      | IBM Cognos Analysis                  |      | Maintenance & Quality .....            | 902  |
| Content Edition .....                 | 924  | for Microsoft Excel.....             | 902  | IBM PureApplication System.....        | 626  |
| Content Analytics.....                | 924  | IBM Cognos BI Scorecarding.....      | 902  | IBM PureData System .....              | 626  |
| Content Analytics                     |      | IBM Cognos Business Viewpoint.....   | 902  | IBM PureData                           |      |
| with Enterprise Search.....           | 924  | IBM Cognos Command Center.....       | 902  | System for Analytics .....             | 626  |
| Content and Predictive Analytics..... | 924  | IBM Cognos Controller .....          | 902  | IBM PureData                           |      |
| Content Classification.....           | 924  | IBM Cognos                           |      | System for Hadoop .....                | 626  |
| Content Foundation                    |      | Disclosure Management .....          | 902  | IBM PureData                           |      |
| and Production Imaging Edition .....  | 924  | IBM Cognos Enterprise (includes      |      | System for Operational Analytics ....  | 626  |
| Content Manager.....                  | 924  | Cognos Business Intelligence) .....  | 902  | IBM PureData                           |      |
| Content Manager OnDemand.....         | 924  | IBM Cognos Express.....              | 902  | System for Transactions.....           | 626  |
| Content Navigator .....               | 924  | IBM Cognos Incentive                 |      | IBM PureFlex System.....               | 626  |
| Data Explorer.....                    | 316  | Compensation Management.....         | 902  | IBM PureSystems                        |      |
| Datacap Taskmaster Capture.....       | 924  | IBM Cognos Insight .....             | 902  | for SAS Analytics .....                | 412  |
| DB2 10.5 for Linux,                   |      | IBM Cognos Integration Server.....   | 902  | IBM QRadar Security Intelligence       |      |
| UNIX and Windows.....                 | MR5  | IBM Cognos Quota Management....      | 902  | Platform .....                         | 526  |
| DB2 10.5 for Linux,                   |      | IBM Cognos Territory Management      | 902  | IBM Rational Test Workbench.....       | 620  |
| UNIX and Windows.....                 | 324  | IBM Cognos TM1.....                  | 902  | IBM Resource                           |      |
| DB2 on the Cloud.....                 | MR5  | IBM Content Analytics.....           | 316  | Access Control Facility.....           | 508  |
| DB2 on the Cloud.....                 | 324  | IBM Customer Next Best               |      | IBM Security Access                    |      |
| DB2 pureScale.....                    | 324  | Action Signature Solution .....      | 902  | Manager for Mobile.....                | 526  |
| DB2 pureScale.....                    | MR5  | IBM DB2.....                         | 316  | IBM Security AppScan .....             | 526  |
| DB2 with BLU Acceleration.....        | MR5  | IBM Endpoint Manager for Mobile....  | 526  | IBM Security AppScan, IBM Security     |      |
| DB2 with BLU Acceleration.....        | 324  | IBM Endpoint Manager                 |      | Access Manager                         |      |
| Defensible Disposal .....             | 924  | for mobile devices .....             | 620  | for Cloud and Mobile.....              | 620  |
| Document Imaging and Capture.....     | 924  | IBM Endpoint Manager                 |      | IBM Security Identity                  |      |
| Ediscovery .....                      | 924  | with LDAP integration. ....          | 508  | and Access Management Suite.....       | 526  |
| FileNet Content Manager.....          | 924  | IBM Entity Analytics Solutions.....  | MR04 | IBM Security                           |      |
| Flash .....                           | 726  | IBM InfoSphere BigInsights.....      | 526  | Key Lifecycle Manager.....             | 508  |
| Fraud .....                           | 924  | IBM InfoSphere Guardium              |      | IBM Security Network IPS .....         | 526  |
| IBM Academic                          |      | Data Activity Monitor .....          | 526  | IBM Security                           |      |
| Performance and Insights .....        | 316  | IBM Integration Bus .....            | 1229 | Network Protection (XGS) .....         | 526  |
| IBM Accelerated                       |      | IBM Interactive .....                | 620  | IBM Security QRadar SIEM .....         | 508  |
| External Reporting Solution .....     | 902  | IBM Master Data Management .....     | 316  | IBM Security QRadar SIEM .....         | 526  |
| IBM Advanced External Reporting..     | 902  | IBM MessageSight.....                | 620  | IBM Security zSecure suite.....        | 508  |
| IBM AIX Solution Edition for Cognos   | 608  | IBM MessageSight Appliance .....     | 508  | IBM SmartCloud.....                    | 316  |





|   |      |  |
|---|------|--|
| IBM Smarter Analytics                   |      |  |
| Signature Solutions                     |      |  |
| CFO Performance Insight .....           | 902  |  |
| IBM Social Media Analytics .....        | 316  |  |
| IBM Social Media Analytics .....        | 902  |  |
| IBM SPSS Analytic Catalyst .....        | 902  |  |
| IBM SPSS Analytic Server .....          | 902  |  |
| IBM SPSS Analytical                     |      |  |
| Decision Management .....               | 902  |  |
| IBM SPSS Data Collection .....          | 902  |  |
| IBM SPSS Modeler .....                  | 902  |  |
| IBM SPSS Statistics .....               | 902  |  |
| IBM Tealeaf CX Mobile .....             | 620  |  |
| IBM Watson .....                        | 608  |  |
| IBM WebSphere                           |      |  |
| Application Server .....                | 508  |  |
| IBM Worklight .....                     | 620  |  |
| Information Lifecycle Governance .....  | 924  |  |
| Informix 12.1 .....                     | 324  |  |
| Informix 12.1 .....                     | MR5  |  |
| Informix Flexible Grid .....            | 324  |  |
| Informix Flexible Grid .....            | MR5  |  |
| Informix Genero .....                   | 324  |  |
| Informix Genero .....                   | MR5  |  |
| Informix OpenAdmin                      |      |  |
| Tool (OAT) for Mobile .....             | 324  |  |
| Informix OpenAdmin                      |      |  |
| Tool (OAT) for Mobile .....             | MR5  |  |
| Informix TimeSeries .....               | 324  |  |
| Informix TimeSeries .....               | MR5  |  |
| Informix Warehouse Accelerator .....    | 324  |  |
| Informix Warehouse Accelerator .....    | MR5  |  |
| InfoSphere BigInsights .....            | 324  |  |
| InfoSphere BigInsights .....            | 316  |  |
| InfoSphere BigInsights                  |      |  |
| on Power Systems .....                  | 608  |  |
| InfoSphere Business                     |      |  |
| Information Exchange .....              | MR04 |  |
| InfoSphere Data Explorer .....          | 324  |  |
| InfoSphere Data Integration             |      |  |
| and Quality .....                       | 324  |  |
| InfoSphere Data Replication .....       | MR04 |  |
| InfoSphere Federation Server .....      | MR04 |  |
| InfoSphere Guardium .....               | MR04 |  |
| InfoSphere Guardium .....               | 324  |  |
| InfoSphere Information                  |      |  |
| Integration and Governance .....        | 324  |  |
| InfoSphere Information Server .....     | MR04 |  |
| InfoSphere Master                       |      |  |
| Data Management .....                   | 324  |  |
| InfoSphere Master Data Management       |      |  |
| (MDM) InfoSphere Optim. ....            | MR04 |  |
| InfoSphere Optim .....                  | 324  |  |
| InfoSphere Optim Tools .....            | 324  |  |
| InfoSphere Optim Tools .....            | MR5  |  |
| InfoSphere Streams .....                | 316  |  |
| InfoSphere Streams .....                | 324  |  |
| InfoSphere Streams                      |      |  |
| on Power Systems .....                  | 608  |  |
| Intellectual Property .....             | 924  |  |
| Intelligent Investigation Manager ..... | 924  |  |
| JSON support for                        |      |  |
| core middleware. ....                   | 508  |  |
| Netezza (Pure Data) .....               | 316  |  |
| OMEGAMON for z/VM and Linux ..          | 508  |  |
| OpenPages .....                         | 316  |  |
| Patient Care and Insights .....         | 924  |  |
| Platform Symphony .....                 | 324  |  |
| Power .....                             | 726  |  |
| Power SC .....                          | 508  |  |
| Predictive Maintenance                  |      |  |
| and Quality .....                       | 708  |  |
| Pure Flex .....                         | 726  |  |
| Rational Developer                      |      |  |
| for System z and new compilers .....    | 508  |  |
| Rational Developer                      |      |  |
| with Worklight Toolkit .....            | 508  |  |
| Rational Team Concert .....             | 508  |  |
| Rational Test Workbench .....           | 508  |  |
| Records and Retention .....             | 924  |  |
| SmartCloud Analytics                    |      |  |
| Predictive Insights .....               | 708  |  |
| SmartCloud Analytics                    |      |  |
| Log Analysis .....                      | 708  |  |
| SmartCloud Control Desk .....           | 508  |  |
| SmartCloud Monitoring                   |      |  |
| (capacity analytics) .....              | 708  |  |
| SmartCloud Orchestration .....          | 508  |  |
| SmartCloud Virtual Storage Center       |      |  |
| (automated storage tier optimization)   | 708  |  |
| Smarter Computing: Cloud .....          | 726  |  |
| Smarter Computing: Data .....           | 726  |  |
| Smarter Computing: Security .....       | 726  |  |
| Smarter Storage .....                   | 726  |  |
| Social Content Management .....         | 924  |  |
| SoftLayer Cloud Infrastructure .....    | 822  |  |
| Software Defined Environments .....     | 726  |  |
| SPSS .....                              | 316  |  |
| Symphony .....                          | 316  |  |
| System Automation                       |      |  |
| for Multiplatform .....                 | 508  |  |
| System Networking .....                 | 726  |  |
| System x .....                          | 726  |  |
| System z .....                          | 726  |  |
| Technical Computing .....               | 726  |  |
| Tivoli Storage Manager                  |      |  |
| Extended Edition .....                  | 508  |  |
| UrbanCode Release and Deploy .....      | 508  |  |
| Value-based Archiving .....             | 924  |  |
| Watson for Healthcare .....             | 316  |  |
| WebSphere Application Server .....      | 511  |  |
| WebSphere Application                   |      |  |
| Server Liberty Core .....               | 511  |  |
| WebSphere Application                   |      |  |
| Server Network Deployment .....         | 511  |  |
| WebSphere eXtreme Scale .....           | 511  |  |



TRANSITIONING TO A HIGHLY VIRTUALIZED,  
SERVICES-ON-DEMAND DATA CENTER ISN'T EASY.

© 2013 Brocade Communications Systems, Inc. All Rights Reserved.

**BUT DEPLOYING, MANAGING, AND SCALING  
YOUR NETWORKS JUST GOT EASIER.**

Brocade® helps you capitalize on today's fundamental IT transformation by delivering radically simplified architectures with data center-class performance. Meeting the increasing demands of a virtualized world is your mission. Making networks easier to deploy, manage, and scale is ours. Let's work together. [brocade.com/easy](http://brocade.com/easy)

**BROCADE** 