

# IBM Cognos 8 BI und IBM Cognos TM1



**Cognos.**  
software

Martin Moser  
Senior Solution Specialist

# Agenda

- TM1 Überblick
- IBM Cognos TM1 zusammen mit IBM Cognos 8 BI
- Schnittstellenmöglichkeiten zu Cognos Produkten
- Demonstration
- Summary

# Cognos TM1

- A patented **64-bit read-write in-memory OLAP engine** that provides compact data storage and exceptionally fast performance
- Model design and data access that present business information in **familiar formats**
- **Ease of use**, thanks to a development environment that enables users to create sophisticated applications with no need for programming or traditional IT skills
- An **intuitive, flexible approach**, which enables users to easily express complex, multi-dimensional business rules
- **Fuses Analysis & Planning** together to provide greater accuracy
- A component of **Cognos 8 Performance Management Platform**

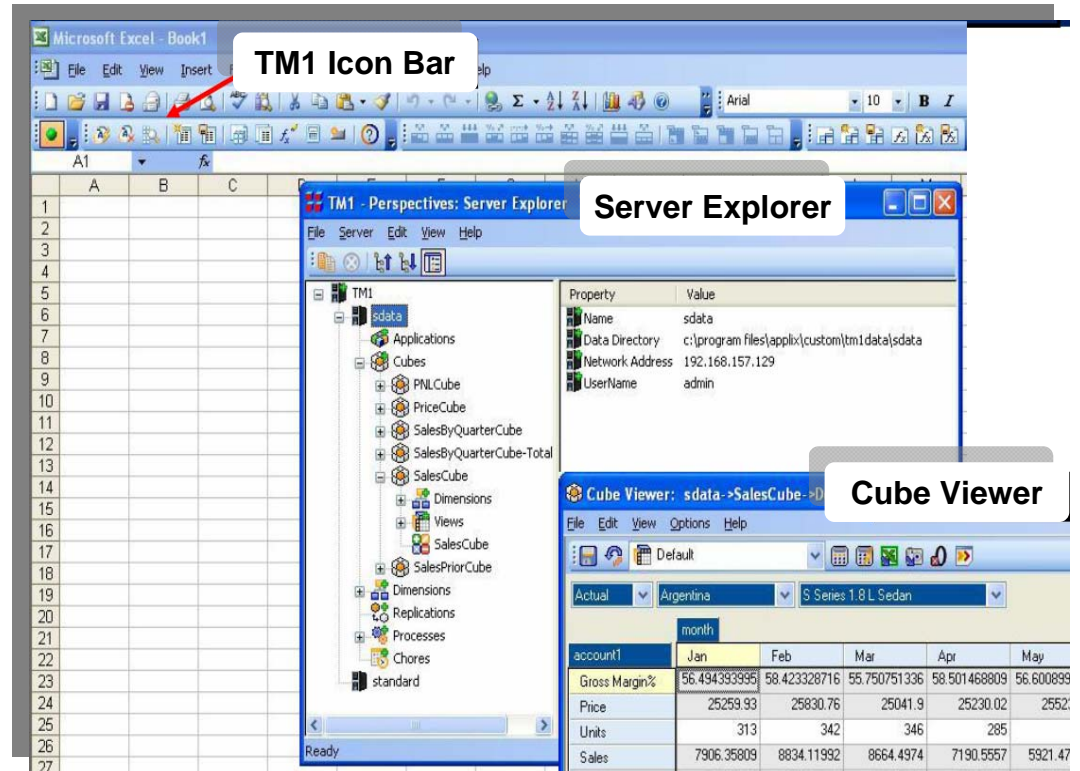


## → Cognos TM1

- Cognos 8 BI
- Cognos 8 Business Viewpoint
- Performance Blueprints

# TM1 Database Components

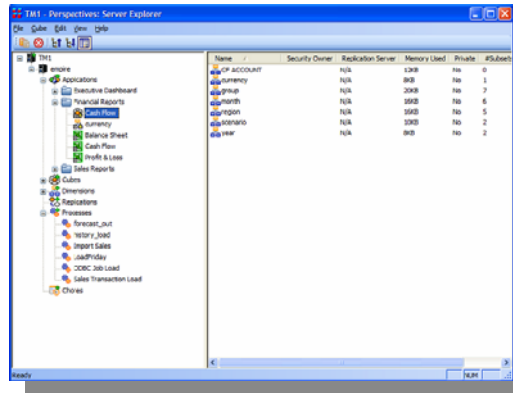
Feature	Benefit
64-bit	Model and analyze large data volumes with fast response times
In-Memory	Easily create simulations interactively to test new business assumptions
Multi-Cube	Model any type of business process; natural way to build models
Rules Language	Create complex financial applications
Turbo Integrator	Easily load large amounts of data quickly (e.g., intraday) from any sources including ERP, DW, etc.



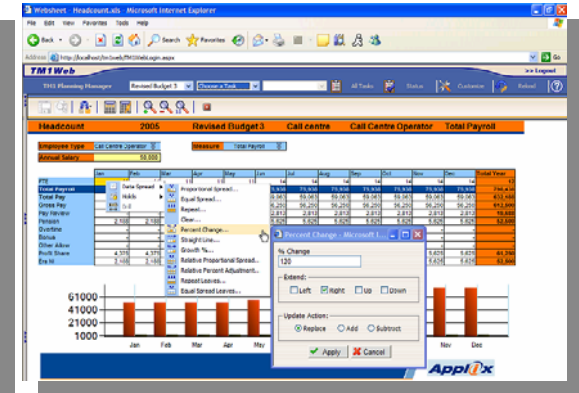
# TM1 Presentation Components

Feature	Benefit
TM1 Server Explorer	Build, deploy, and maintain application dimensions, cubes, rules, security, etc.
Cognos TM1 Excel	Easily create reports and templates deployed via Excel or web
Cognos TM1 Web	Simply access Excel "generated" reports or input templates
Cognos TM1 Executive Viewer	Self-service ad-hoc analysis optimized for R/W access to TM1 (also supports Essbase, MSAS, SAP BW)

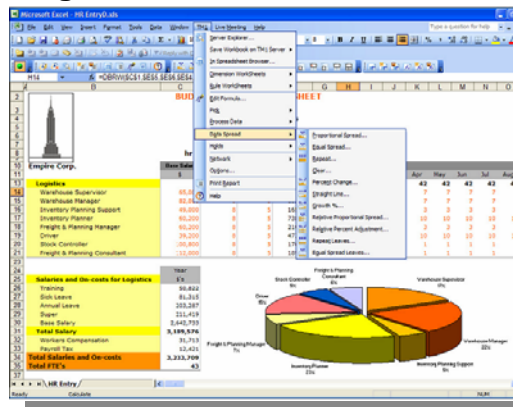
Cognos TM1 Server Explorer



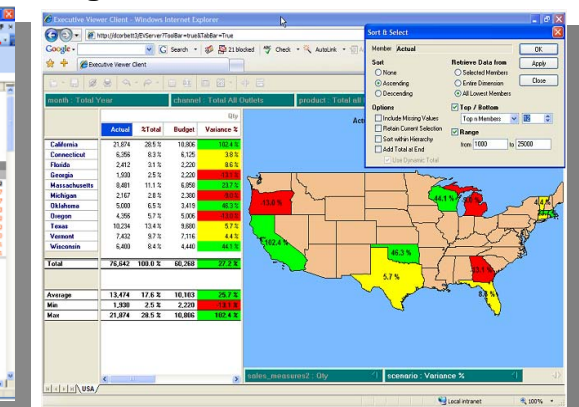
Cognos TM1 Web



Cognos TM1 Excel



Cognos TM1 Executive Viewer



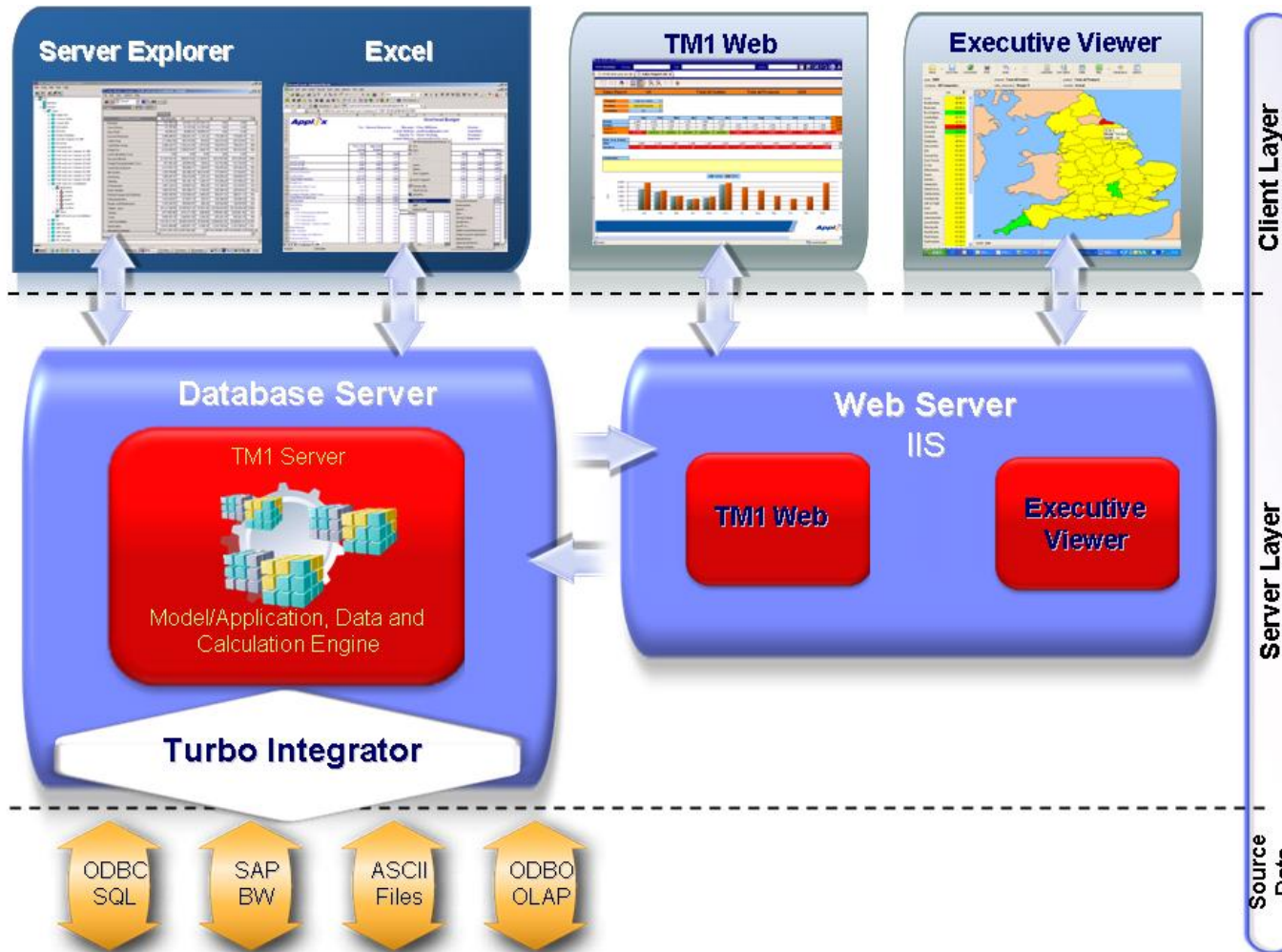
## Step 1: TM1 Modeling

In-memory analytics	Provide near-real-time responsiveness for large and complex models
On-demand calculation	Easily create interactive simulations to test business scenarios
Multi-cube	Structure and store any business data in a natural, multi-dimensional way
Modeling language	Express complex business rules with simple calculation statements
Fast data integration	Easily load large amounts of data quickly from any corporate source

## Step 2: TM1 Presentation

TM1 Server Explorer	TM1's "power user" interface to maintain dimensions, cubes, rules, integration and user security
TM1 Excel	Easily create rich TM1-based user applications directly in Microsoft Excel
TM1 Web	Non-technical, secure delivery of applications for Microsoft Windows, Apple Macintosh or Linux
TM1 Executive Viewer	Provide casual users with self-service analysis optimized for ad-hoc data navigation and visualization

# TM1 System architecture



# Agenda

- TM1 Überblick
- IBM Cognos TM1 zusammen mit IBM Cognos 8 BI
- Schnittstellenmöglichkeiten zu Cognos Produkten
- Demonstration
- Summary



## Integration with IBM Cognos 8

- A single integrated platform for Performance Management applications
- Extended financial and operational analytics
- Enterprise-grade scalability and security



IBM Cognos TM1

# IBM Cognos 8 BI with TM1

Google Search



Cognos Office



BI Analysis For Excel



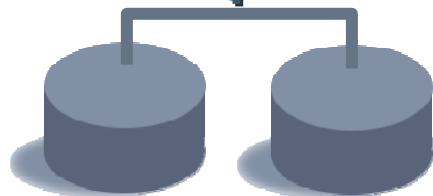
Cognos Mobile

Single Portal with Zero-footprint Web Interface

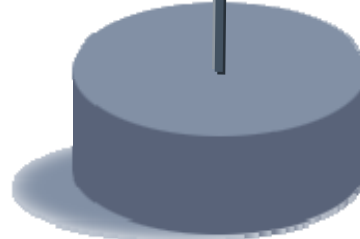
Reporting , Dashboarding, Ad-hoc Query, Analysis, Scorecarding, Event Management  
TM1 Web, Executive Viewer

Common Metadata, Security, Integration Services, Query Engine, Automation, Process Mgt

Heterogeneous

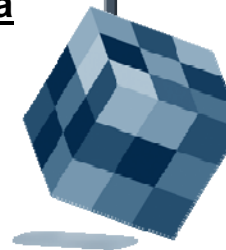


RDBMS DW



OLAP Data

TM1  
PowerPlay  
SAP BW  
ESSBASE  
MSAS



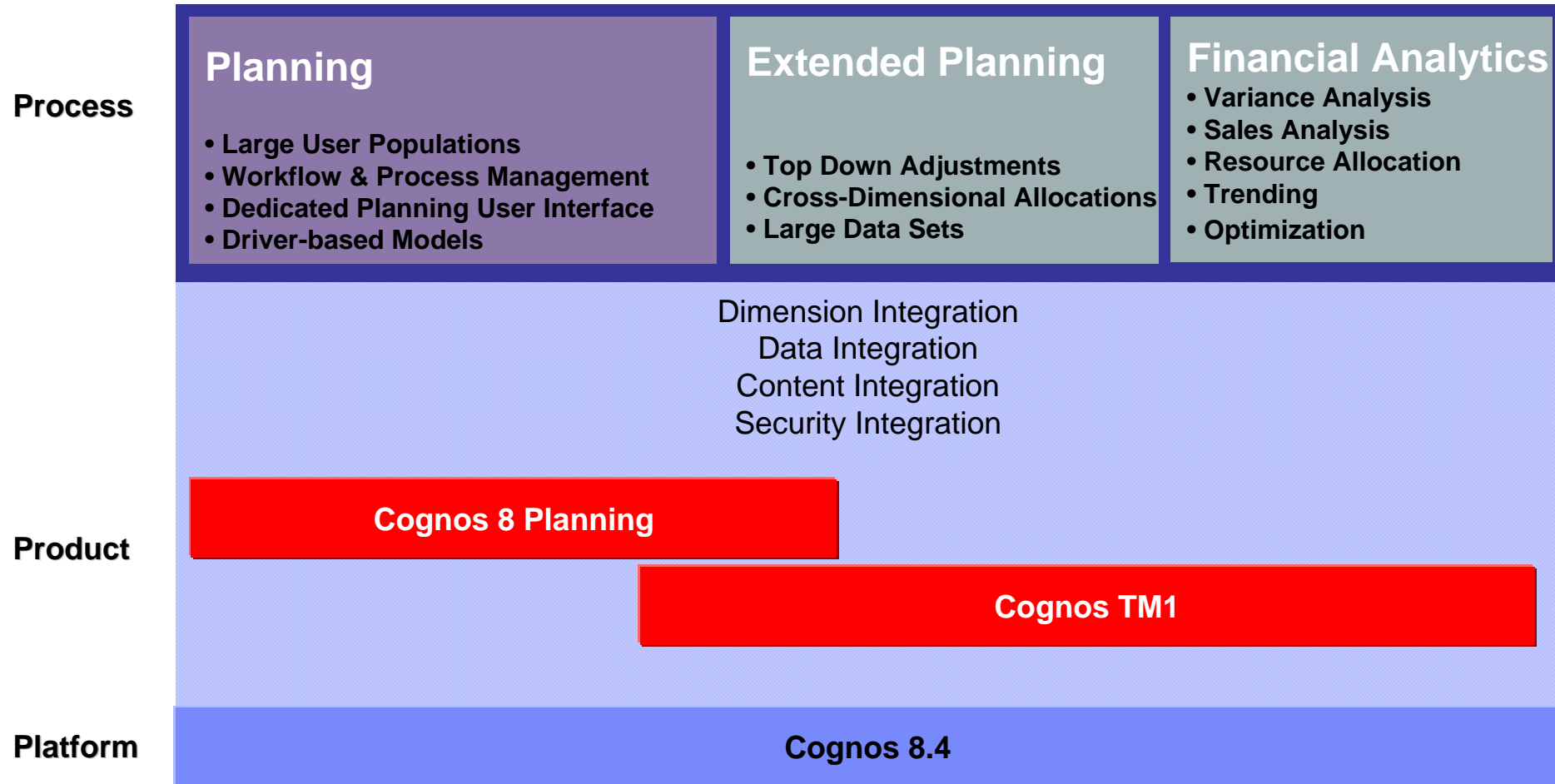
Flat Files



# Agenda

- TM1 Überblick
- IBM Cognos TM1 zusammen mit IBM Cognos 8 BI
- Schnittstellenmöglichkeiten zu Cognos Produkten
- Demonstration
- Summary

# Optimized Solutions for Planning & Analytics



# Cognos 8 Planning Process

## Cognos 8 TM1:

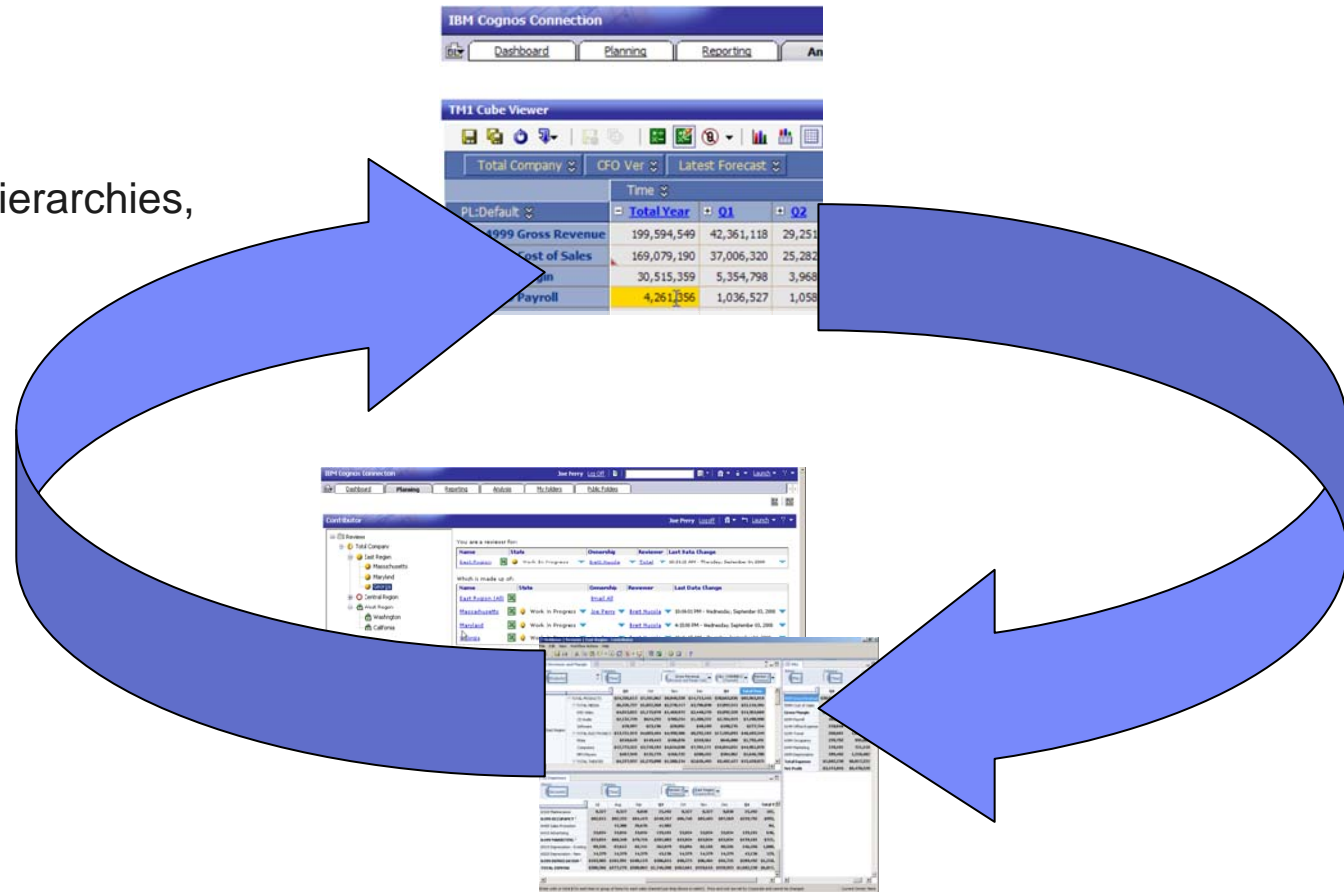
### *Pre- and Post-Planning*

Emphasis on alternative hierarchies, allocations, reporting and analysis

## Cognos 8 Planning:

### *Managed contribution*

Emphasis on user experience; workflow; auditability and process control



# Agenda

- TM1 Überblick
- IBM Cognos TM1 zusammen mit IBM Cognos 8 BI
- Schnittstellenmöglichkeiten zu Cognos Produkten
- Demonstration
- Summary

# Create TM1 Package using Framework Manager Wizard

The image displays four sequential screenshots from the IBM Cognos Framework Manager wizard:

- New data source:** Shows the 'Specify the connection' step. The 'Type' dropdown is set to 'TM1'. A list of data source types is visible, including 'IBM Cognos Finance', 'Microsoft SQL Server (ODBC)', and 'Oracle'.
- Metadata Wizard - Select Cube:** Shows the 'Select the cube you want to import' step. A tree view under 'S-Data - Sales Cube' lists various cubes, with 'SalesCube' selected.
- Metadata Wizard - Select Locales:** Shows the 'Assign one or more locales to each language-specific alias table' step. Dimensions listed include 'account1', 'actvsbud', 'model', and 'month'. Alias tables are shown as '[account1] [compte1]' and '[account1] [wertart1]'. The 'English' language is selected.
- Publish Wizard - Finish:** Shows the final step where the package has been successfully published to 'Public Folders > SalesCube'. It lists administrator groups such as 'Report Administrators' and 'Metrics Administrators'. The 'Exit this wizard' option is selected.

# Cognos Connection Portlet Integration

Browser address bar: [http://localhost/cognos8/cgi-bin/cognos.cgi?b\\_action=xts.run&m=portal/cc.xts&cpstarget=FAAAGxikwq5F](http://localhost/cognos8/cgi-bin/cognos.cgi?b_action=xts.run&m=portal/cc.xts&cpstarget=FAAAGxikwq5F)

### Bike Report

**Cognos Viewer**

**Total all Products**

- All Terrain
- Kids
- Hybrids

Revenue	Jan	Feb	Mar	Q1
All Terrain	20,300.00	5,120.00	900.00	26,320.00
Kids	3,300.00	0.00	0.00	3,300.00
Hybrids	2,980.00	0.00	0.00	2,980.00
<b>Total all Products</b>	<b>26,580.00</b>	<b>5,120.00</b>	<b>900.00</b>	<b>32,600.00</b>

Jul 27, 2008 - 1 - 11:39:19 PM

**TM1 Websheet Viewer**

Cost Center: 1100  
Company: 100  
Version: 2007 Budget

	Jan Qty	Feb Qty	Mar Qty	
	93	13	3	
Rock Snow & Knobbly Tyres	88	8	3	Total all Products
	21	8	3	All Terrain
	23	0	0	Hybrids
	44	0	0	Kids
Bikeland	0	5	0	Total all Products
	0	5	0	All Terrain
	0	5	0	Ally Trail 21 Mens
	0	0	0	Ally Trail 21 Womens
	0	0	0	Carbon Fibre IS 48
	0	0	0	Hybrids
	0	0	0	Streetbike Mens
	0	0	0	Streetbike Womens
	0	0	0	Kids
	0	0	0	Commando
	0	0	0	Terrapin IV



# Agenda

- TM1 Überblick
- IBM Cognos TM1 zusammen mit IBM Cognos 8 BI
- Schnittstellenmöglichkeiten zu Cognos Produkten
- Demonstration
- Summary

## How to get the benefits without the problems

- **Cognos TM1**
  - Collects data from **multiple** data sources
  - Organises data in multi-dimensional (**OLAP**) models
  - To Create a **Single Version of the Truth**
  - **Read/Write** capability for Reporting, Analysis and data entry (Budgeting, Forecasting, Consolidation, **What If Analysis**)
  - **Real-Time** Consolidation and complex business calculations for exceptional what-if analysis capability
  - Tight Integration to **Excel** for a familiar Interface
  - **Workflow** for tracking Business Processes
  - Thin Client (**Web**) Architecture for Wide Deployment and ease of maintenance
  - **Rapid** Prototyping and Deployment
  - **Minimal IT** Dependency
  - **Low Total Cost of Ownership**



THANK  
YOU

© Copyright IBM Corporation 2008 All rights reserved. The information contained in these materials is provided for informational purposes only, and is provided AS IS without warranty of any kind, express or implied. IBM shall not be responsible for any damages arising out of the use of, or otherwise related to, these materials. Nothing contained in these materials is intended to, nor shall have the effect of, creating any warranties or representations from IBM or its suppliers or licensors, or altering the terms and conditions of the applicable license agreement governing the use of IBM software. References in these materials to IBM products, programs, or services do not imply that they will be available in all countries in which IBM operates. Product release dates and/or capabilities referenced in these materials may change at any time at IBM's sole discretion based on market opportunities or other factors, and are not intended to be a commitment to future product or feature availability in any way. IBM, the IBM logo, Cognos, the Cognos logo, and other IBM products and services are trademarks of the International Business Machines Corporation, in the United States, other countries or both. Other company, product, or service names may be trademarks or service marks of others.