



FINANCIAL ANALYTICS - PRODUCT PROFITABILITY BLUEPRINT  
PERFORMANCE BLUEPRINT SETUP DOCUMENT  
A WEB-BASED PERFORMANCE MANAGEMENT SOLUTION

## Table of Content

|  |           |
|--|-----------|
| <b>1. Blueprint Overview.....</b>  | <b>2</b>  |
| <b>2. Making Content Files available for each application.....</b>                                       | <b>3</b>  |
| 2.1. Unzipping the "Product_Profitability_Blueprint_Content" .....                                       | 3         |
| 2.2. Copying the necessary files into their respective directories .....                                 | 3         |
| Copy the content of TM1 Application to: .....  | 3         |
| <b>3. IBM Cognos TM1 Content.....</b>  | <b>4</b>  |
| 3.1. Extract the IBM Cognos TM1 Content.....   | 4         |
| 3.2. Configure a new IBM Cognos TM1 Server instance.....   | 4         |
| 3.2.1. Modify the Tm1s.cfg server configuration file .....   | 5         |
| 3.2.2. Modify/Create the shortcut to Server .....  | 6         |
| 3.3. Testing the new IBM Cognos TM1 Server instance .....  | 7         |
| 3.4. Processes to reset Reforecast Data .....  | 9         |
| <b>4. IBM Cognos 8 BI Content.....</b>   | <b>10</b> |
| 4.1. Create the data sources .....   | 10        |
| 4.1.1. Create 'Product_Profitability_Blueprint' data source .....  | 10        |
| 4.1.1.1. Run the import wizard to bring in the BI Content into the IBM Cognos<br>Connection portal ..... | 15        |
| 4.2. Testing IBM Cognos Dashboards Content .....   | 19        |



## 1. Blueprint Overview

This document explains the content and provides installations steps for a web-based solution reporting for the Product Profitability Blueprint.

IBM Cognos Blueprints are pre-defined data, process, and policy software models developed in partnership with leading academic institutions. They are essentially “quick-start” data models that IBM Cognos customers can download and implement at no extra cost.

Using the Blueprint with your IBM Cognos performance management system will enable users to clearly identify their performance and track it in a consistent, logical manner. This tool gives the user a simple yet powerful way to have an insight into different Metrics and KPIs to understand better how they have been performing.



## 2. Making Content Files available for each application

### 2.1. Unzipping the "Product\_Profitability\_Blueprint\_Content"

After unzipping the "PRODUCT\_PROFITABILITY\_Blueprint\_Content" it will create the following directories:

| Name                      | Size | Type          | Date Modified      |
|---------------------------|------|---------------|--------------------|
| Deployment File - Reports |      | File Folder   | 11/16/2009 9:08 AM |
| Documentation             |      | File Folder   | 11/16/2009 9:10 AM |
| Framework Manager Model   |      | File Folder   | 11/16/2009 9:47 AM |
| Graphics, Files, etc      |      | File Folder   | 11/16/2009 9:08 AM |
| TM1 Application           |      | File Folder   | 11/16/2009 9:08 AM |
| readme.txt                | 1 KB | Text Document | 11/16/2009 9:09 AM |

We will reference these directories, which store the pertinent files.

### 2.2. Copying the necessary files into their respective directories

Copy the Product\_Profitability\_Blueprint\_BI\_Deployment.zip file from 'Deployment File – Reports' into <IBM Cognos 8 install location>/deployment

Note: Depending upon the BI environment configuration the location of the deployment folder may be setup to a different server, confirm the location with the BI administrator.

Copy all folders/images from the /Graphics,Files,etc directory into <IBM Cognos 8 install location>/webcontent/samples/images

Note: For multi-server installation the images would need to be copied over the Gateway servers. Verify with the BI Administrator the architecture of the BI environment before copying the files.

Copy the content of TM1 Application to:

C:\IBM\Cognos Innovation Center\Blueprints\Product Profitability Analytics

Note: The TM1 data model uses Turbo Integrator Processes and Chores to copy data between Scenario 2 (Actual/Forecast) and Scenario 3 (Reforecast) to start the Reforecast cycle and also to import data from source files to Reforecast to mimic the effect of making changes to the Reforecast to take corrective action. The reason this is done is to obviate the need for opening TM1 and making the data changes manually as there are quite a few data changes required. For this reason it is important that the previous path is created. Otherwise the import process will not work. Using a different path will require editing the Turbo Integrator Processes.



### 3. IBM Cognos TM1 Content

The purpose of the TM1 data model is to act as a data source for the Business Intelligence Analytics. The TM1 data model should not be considered as anything other than this and should not be seen as an example of manufacturing planning, retail planning, allocation methodology or any other type of planning. For proven practices for specific planning processes please refer to the blueprints designed to support functional and industry sector blueprints.

The following steps will navigate through the steps required to create a new IBM Cognos TM1 Server instance and configure the objects needed for the IBM Cognos TM1 content to work properly.

#### 3.1. Extract the IBM Cognos TM1 Content

Go to folder "C:\IBM\Cognos Innovation Center\Blueprints\Product Profitability Analytics" to unzip the file "Financial\_Analytics\_Product\_Profitability\_Blueprint\_TM1Content.zip". The files extracted should be located within the same folder.

Once the files are extracted the following structure will be available:

| Name            | Size | Type        |
|-----------------|------|-------------|
| Applications    |      | File Folder |
| Admin           |      | File Folder |
| Excel           |      | File Folder |
| New Folder      |      | File Folder |
| Objects         |      | File Folder |
| Reforecast Data |      | File Folder |
| Source Files    |      | File Folder |

#### 3.2. Configure a new IBM Cognos TM1 Server instance

The following steps provide a quick guideline on how to get a new IBM Cognos TM1 server instance, however a more detailed explanation can be found in the IBM Cognos TM1 Server Administration document.

To configure a new IBM Cognos TM1 Server instance the following files are required:

Tm1s.cfg

Tm1s.lic

And, a shortcut to execute tm1s.exe using the Blueprint content as the working directory.



The tm1s.lic file is included in your IBM Cognos TM1 installation. This file can be copied from <YourIBMCognosTM1\_Directory\Install>/bin folder. The content of this file is similar to:

```
DATABASE_TYPE=TM1 PROPRIETARY
CLASS=505
LICENSE=<YourLicense>
MAX_USERS=99999
MAX_READONLY_USERS=99999
EXPIRE_DT=<YourExpiryDate>
LOCATION=
ORGANIZATION=<YourCompany>
LICENSOR=16699
INSTALL_ID=13108
PRODUCT=TM1Server8
.....
```

This file would need to be copied over to the following folder:  
"C:\IBM\Cognos Innovation Center\Blueprints\Product Profitability Analytics/Objects"  
to be able to create a new IBM Cognos TM1 Server instance.

### 3.2.1. Modify the Tm1s.cfg server configuration file

Within the folder  
"C:\IBM\Cognos Innovation Center\Blueprints\Product Profitability Analytics/Objects"  
The file "tm1s.cfg" is provided.

This file needs to be modified to point to the IBM Cognos TM1 Admin Server on your environment. The file is provided as:

```
[TM1S]
ServerLogging=F
SecurityPackageName=Kerberos
IntegratedSecurityMode=1
UseSSL=T
ServerName=Financial Analytics
DataBaseDirectory=C:\IBM\Cognos Innovation Center\Blueprints\Product Profitability
Analytics
AdminHost=localhost
PortNumber=11111
ClientMessagePortNumber=12346
Language=ENG
SaveTime=
DownTime=
ProgressMessage=True
AuditLogOn=F
```



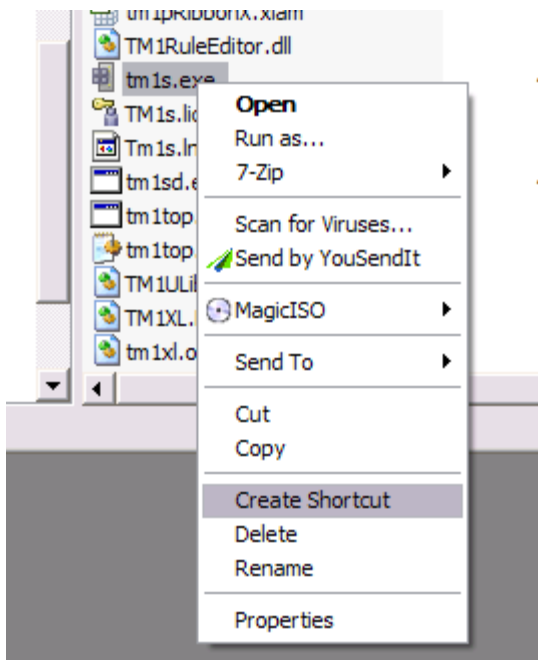
AuditLogMaxFileSize=100 MB  
 AuditLogUpdateInterval=60  
 DefaultMeasuresDimension=T

The parameters highlighted in red would need to be reviewed and modified accordingly for your company environment. If there is certainty that the TCP ports set in the previous parameters are not being used, they can be left unchanged.

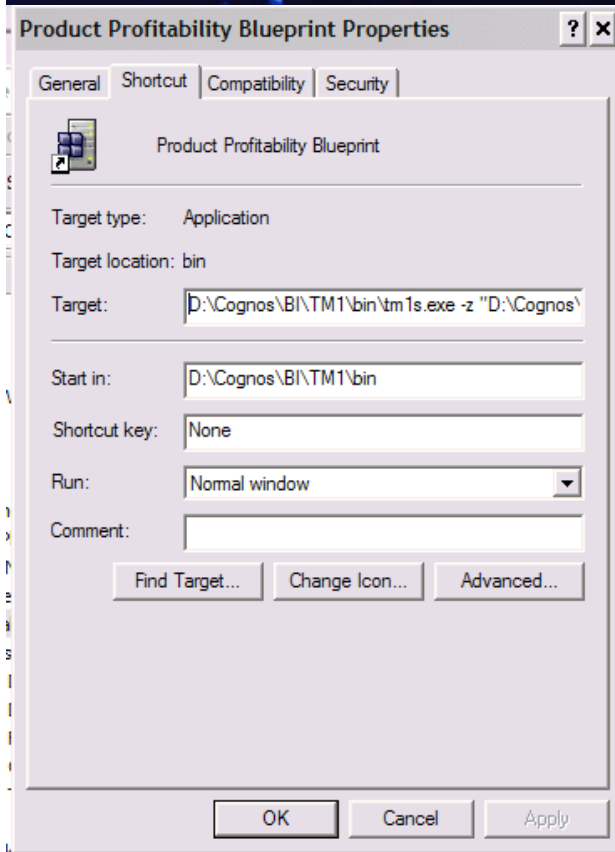
However the "AdminHost" would need to be changed to set it as the IBM Cognos TM1 Admin Sever host in your environment.

### 3.2.2. Modify/Create the shortcut to Server

Navigate to "<YourIBMCognosTM1\_DirectoryInstall>/bin" folder; create a shortcut to tm1s.exe.



- Copy the shortcut created to "C:\IBM\Cognos Innovation Center\Blueprints\Product Profitability Analytics"
- Rename the shortcut to be "Product Profitability Blueprint"
- Edit the Shortcut Properties



The "Target" property of the shortcut needs to be changed to read:

```
<YourIBMCognosTM1InstallFolder>\bin\tm1s.exe -z "C:\IBM\Cognos Innovation Center\Blueprints\Product Profitability Analytics "
```

Notice that the last portion of the command is the folder where the IBM Cognos TM1 content was extracted to.

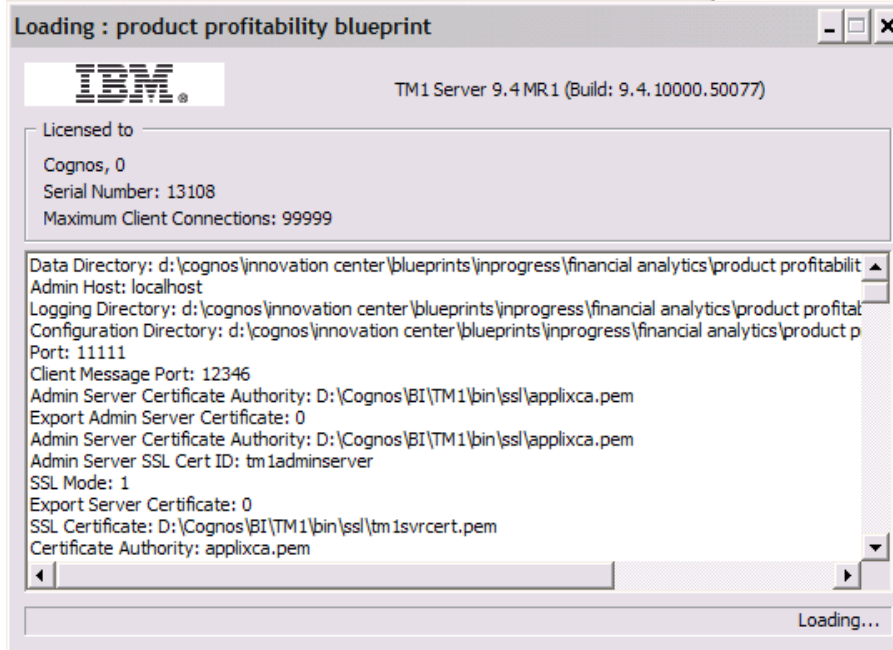
- Click onto OK to save the changes.

### 3.3. Testing the new IBM Cognos TM1 Server instance

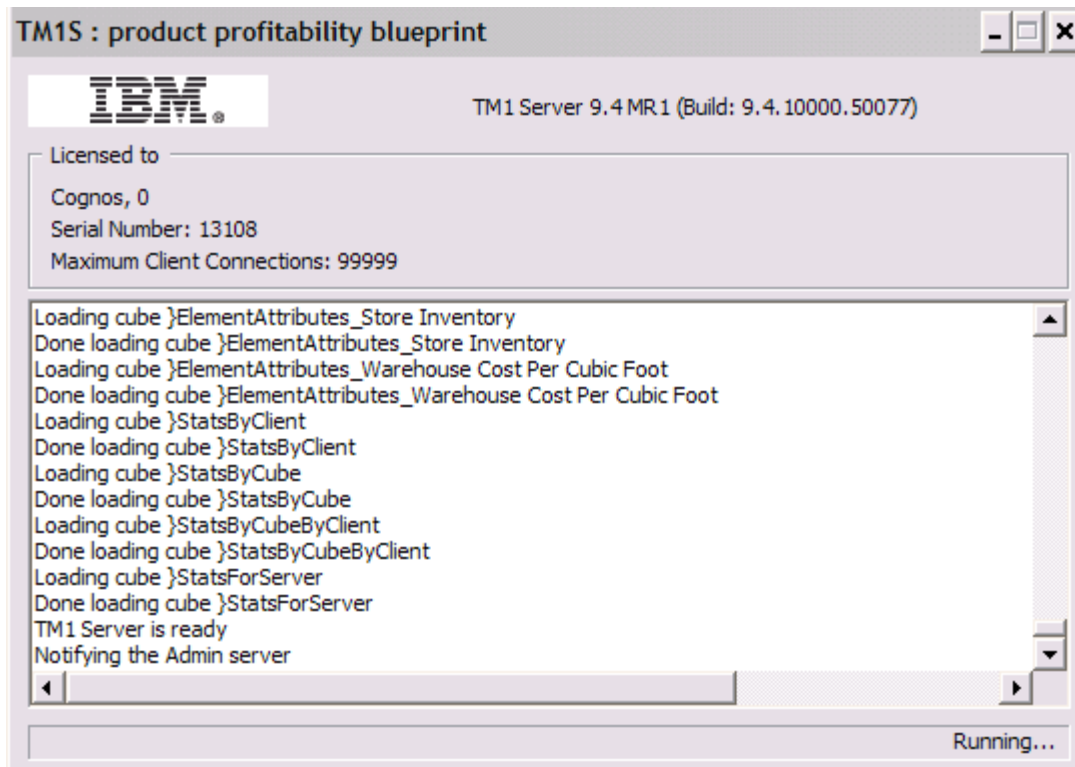
Double click onto the shortcut "Product Profitability Blueprint" located in the folder: "C:\IBM\Cognos Innovation Center\Blueprints\Product Profitability Analytics"

The following dialog will come up:





And after all the cubes have been loaded the last lines in the dialog will display:



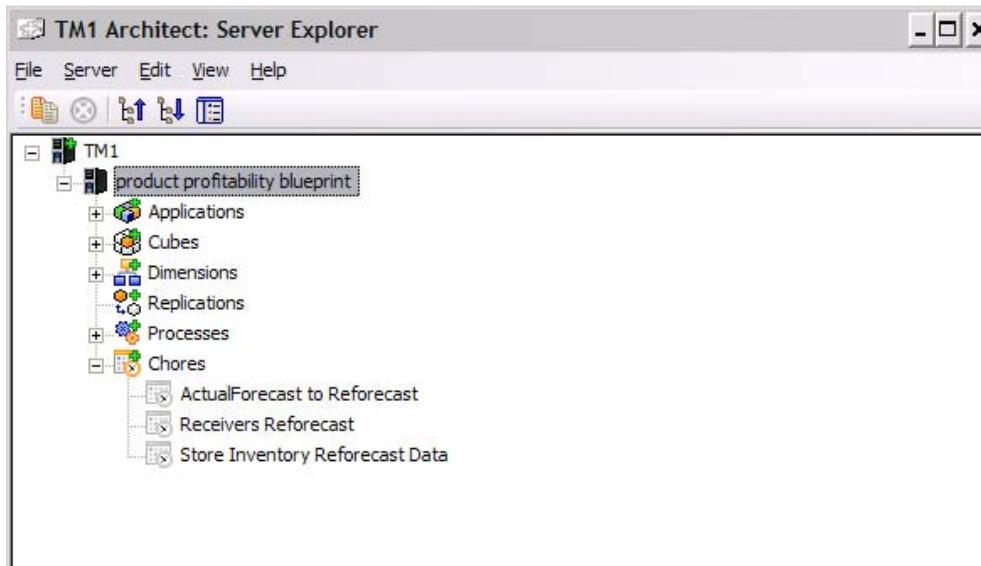
Once the newly created IBM Cognos TM1 Server instance is up and running, Architect and/or IBM Cognos TM1Web can be used to navigate through the content.





### 3.4. Processes to reset Reforecast Data

The Reforecast data has been pre-run so the BI Analytics will work immediately. If you wish to reset the Reforecast data to zero and to run the Turbo Integrator Chores from Architect



The easiest way to do this is to:

- Delete Scenario 3 from the dimension 'Scenarios' and then to re-add it and give it the alias 'Reforecast'.
- Execute the Turbo Integrator Chore 'ActualForecast to Reforecast' to populate 'Reforecast' with initial data.
- Execute the Turbo Integrator Chore 'Receivers Reforecast Data' to amend the Receivers data. (This process changes the Receivers reforecast data so that half the products are discontinued, inventory for these products is cleared and the sales volume associated with these products is assigned to the remaining products).
- Execute the Turbo Integrator Chore 'Store Inventory Reforecast Data' to amend the store inventory data (This reduces the cubic feet assigned to the '65 inch Flat Panel TV' and allocates the freed space to the other products with a corresponding increase in sales volume.)



## 4. IBM Cognos 8 BI Content

The following steps will navigate through the steps required to configure the objects needed for the IBM Cognos BI content to work properly.

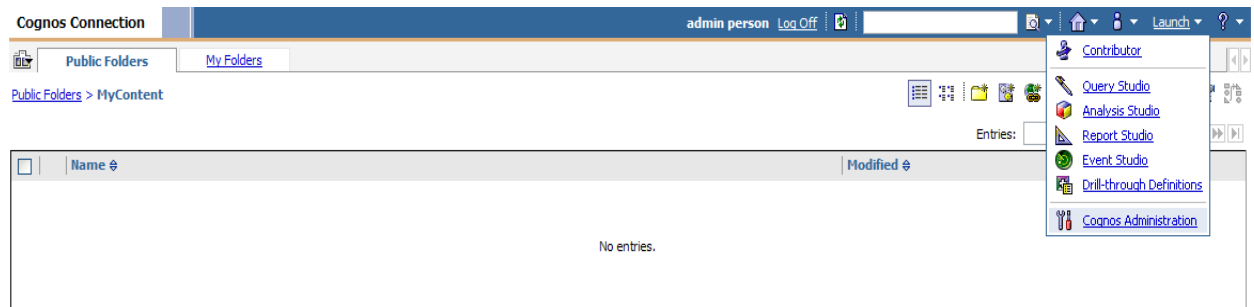
### 4.1. Create the data sources

First, we will look into creating the connections to the data sources.

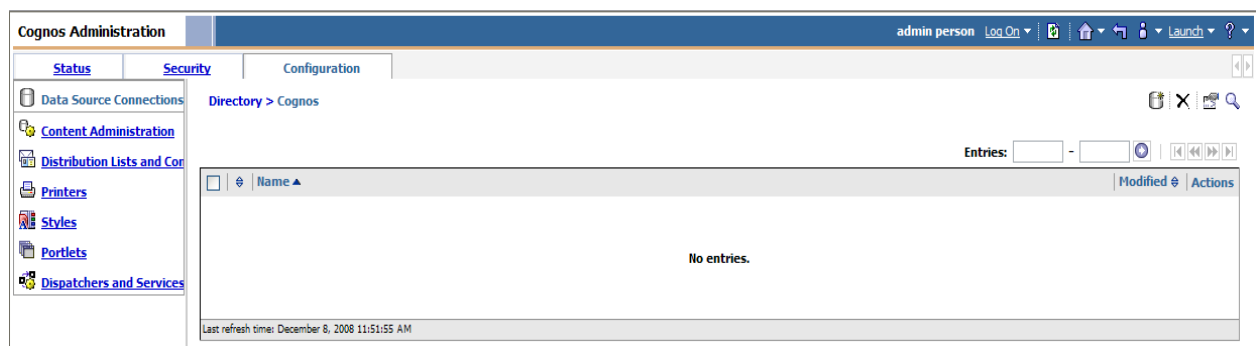
#### 4.1.1. Create 'Product\_Profitability\_Blueprint' data source

Open a browser window and go to IBM Cognos Connection. If Authentication is setup, login with a directory Administrator user.

Click on to Launch and select IBM Cognos Administration



Click on the Configuration tab; make sure 'Data Source Connections' is selected



Click the Data Sources tab then click the New Data Source Icon 

# Innovation Center for Performance Management

Your connection to best practices and industry leaders

Information Management

Cognos.  
software

Cognos Administration

admin person Log On | Home | Launch | ?

Status

Security

Configuration

Data Source Connections

Content Administration

Distribution Lists and Cor

Printers

Styles

Portlets

Dispatchers and Services

Directory > Cognos

New Data Source

Entries: -

Modified Actions

No entries.

Last refresh time: December 8, 2008 11:51:55 AM



Name the Data Source exactly as: “Product\_Profitability\_Blueprint” then click Next >

A screenshot of the 'Specify a name and description - New Data Source wizard' window. The 'Name' field contains 'xDataSourceNameFromDocumentation'. The 'Description' field is empty. The 'Screen tip' field is empty. The 'Location' is set to 'Directory > Cognos'. The 'Next >' button is highlighted with a blue circle.

Select the ‘TM1’ option; then click Next >

A screenshot of the 'Specify the connection - New Data Source wizard' window. The 'Type' dropdown menu is open, showing a list of data source types. 'TM1' is highlighted at the bottom of the list. The list includes: IBM Cognos Finance, IBM Cognos Now! Cube, IBM Cognos Planning - Contributor, IBM Cognos Planning - Series 7, IBM Cognos PowerCube, IBM InfoSphere Warehouse cubing services (XMLA), Composite (ODBC), IBM Cognos Virtual View Manager (ODBC), DB2, Hyperion Essbase/IBM DB2 OLAP Server, Informix, Microsoft SQL Server (ODBC), Microsoft SQL Server (OLE DB), Microsoft SQL Server (SQL 2005 Native Client), Microsoft Analysis Services (via ODBO), Microsoft Analysis Services 2005, ODBC, Oracle, Progress OpenEdge, Red Brick (ODBC), SAP BW, Sybase Adaptive Server Enterprise (CT-Lib), Sybase Adaptive Server Enterprise (CT-15), Teradata (ODBC), TM1, XML, and Other type.

Fill out the options for the connection then click [Test the connection...](#)

# Innovation Center for Performance Management

Your connection to best practices and industry leaders

Information Management

Cognos  
software

## Specify the TM1 connection string - New Data Source wizard

Edit the parameters to build a TM1 connection string.

### Administration Host:

### Server Name:

### Signon

Select the type of authentication to use, whether a password is required and whether to create a signon.

- ☐ No authentication
- ☐ An external namespace:

- ☒ Signons

☐ Password

☒ Create a signon that the Everyone group can use:

#### User ID:

#### Password:

#### Confirm password:

### Testing

[Test the connection...](#)

Cancel

< Back

Next >

Finish



Click Test to verify the connection is setup correctly

Test the connection - New Data Source wizard

Test the parameters that make up the database connection.

Connection string:  
^User ID=^?Password:;LOCAL;OLDBInfo\_Type=MS;Provider=SQLEDB;User ID=%s;Password=%s;Data Source=xDatabaseServerName;Provider\_String=Initial  
Catalog=xBlueprintPublishTableName;@COLSEQ=

**Test**

Dispatcher:  
http://russeiro:9323/p2pd (Configuration)

Test the connection using:  
User ID:  
xCognosDatabaseUser

Password:  
\*\*\*\*\*

Close

The following screen should indicate Succeeded below the Status then click Close

View the results - Test the connection

| Name                      | Status           | Message |
|---------------------------|------------------|---------|
| http://russeiro:9323/p2pd | <b>Succeeded</b> |         |

**Close**

Click Close

Test the connection - New Data Source wizard

Test the parameters that make up the database connection.

Connection string:  
^User ID=^?Password:;LOCAL;OLDBInfo\_Type=MS;Provider=SQLEDB;User ID=%s;Password=%s;Data Source=xDatabaseServerName;Provider\_String=Initial  
Catalog=xBlueprintPublishTableName;@COLSEQ=

Test

Dispatcher:  
http://russeiro:9323/p2pd (Configuration)

Test the connection using:  
User ID:  
xCognosDatabaseUser

Password:  
\*\*\*\*\*

**Close**



Click Finish to add the new data source

Specify the Microsoft SQL Server (OLE DB) connection string - New Data Source wizard

Edit the parameters to build a Microsoft SQL Server (OLE DB) connection string.

Server name:

Database name: ☐ Master ☒ xBlueprintPublishTableName

Application name:

Collation sequence:

Signon

Select the type of authentication to use, whether a password is required and whether to create a signon.

☐ No authentication  
☐ Cognos & service credentials  
☐ An external namespace:

☒ Signons

☒ Password  
☒ Create a signon that the Everyone group can use:

User ID:   
 Password:   
 Confirm password:

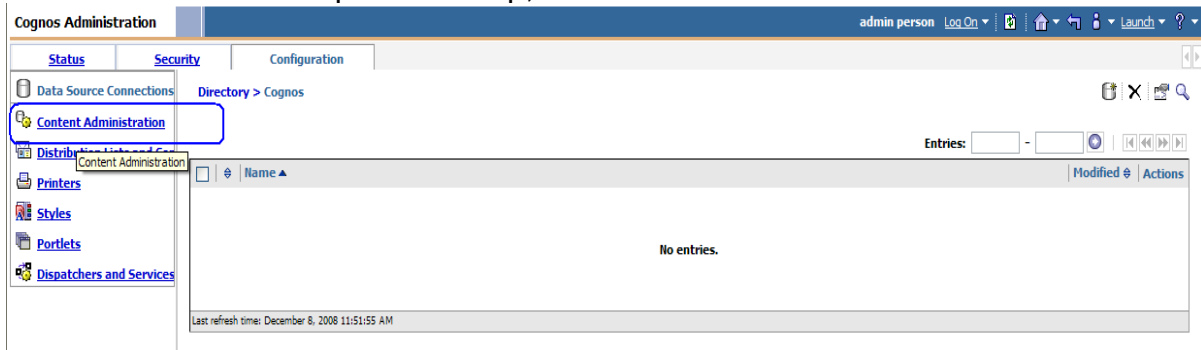
Testing

Test the connection...

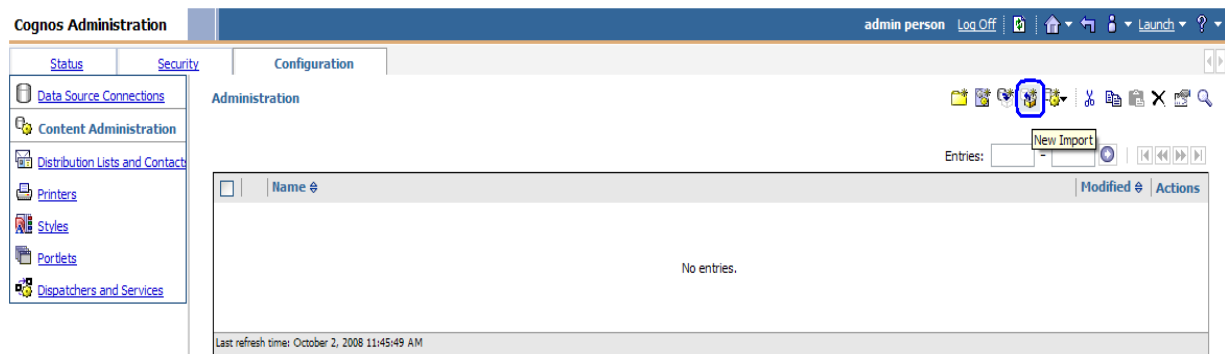
Cancel < Back Next > **Finish**

4.1.1.1. Run the import wizard to bring in the BI Content into the IBM Cognos Connection portal

From the screen in the previous step, select Content Administration



Click the New Import icon







Select the import package named 'Product\_Profitability\_Blueprint\_BI\_Deployment'; then click Next >

A screenshot of the 'Select a deployment archive - New Import wizard' dialog box. The title bar says 'Select a deployment archive - New Import wizard' with a 'Help' button and a close 'X' button. The main text says 'Select the deployment archive from which to get the entries to import. If the archive is encrypted, you will be prompted to enter the encryption password.' Below this is a section for 'Deployment archive' with a note: 'The location of the deployment archive is set using the deployment files location in Cognos Configuration.' There is a list box with a single entry 'Blueprint Name' which is highlighted. Above the list box is a 'Name' label and a 'Blueprint Name' text field. To the right of the list box is a 'Entries: 1 - 1' indicator with navigation buttons. At the bottom are 'Cancel', '< Back', 'Next >', and 'Finish' buttons. The 'Next >' button is highlighted with a blue circle.

Verify the Name is 'Product\_Profitability\_Blueprint\_BI\_Deployment' then click Next >

A screenshot of the 'Specify a name and description - New Import wizard' dialog box. The title bar says 'Specify a name and description - New Import wizard' with a 'Help' button and a close 'X' button. The main text says 'Specify a name and location for the deployment specification. You can also specify a description and screen tip.' There are four text fields: 'Name:' with 'Blueprint Name', 'Description:', 'Screen tip:', and 'Location:'. The 'Location:' field has a dropdown menu showing 'Administration' and a link 'Select another location...'. At the bottom are 'Cancel', '< Back', 'Next >', and 'Finish' buttons. The 'Next >' button is highlighted with a blue circle.

Specify the options and DO NOT check 'Disable after import' then click Next >

A screenshot of the 'Select the public folders content - New Import wizard' dialog box. The title bar says 'Select the public folders content - New Import wizard' with a 'Help' button and a close 'X' button. The main text says 'Select one or more packages or folders and select the options to include in the import.' Below this is a section for 'Public folders content' with a note: 'Change the target name of packages and folders if you do not want to overwrite them in the target with packages and folders from the deployment archive. Disable the packages and folders if you do not want users to access them in the target after the import.' There is a table with columns: 'Name', 'Target name', 'Disable after import', 'In target content', and 'Modified'. The first row has 'Blueprint Name' in the 'Name' column, 'Blueprint Name' in the 'Target name' column, and an unchecked checkbox in the 'Disable after import' column. A blue arrow points from the unchecked checkbox to a red box with the text 'Leave Unchecked'. Below the table is an 'Options' section with three checked checkboxes: 'Include report output versions', 'Include run history', and 'Include schedules'. Each checked checkbox has a 'Conflict resolution:' section with radio buttons for 'Keep existing entries' and 'Replace existing entries'. The 'Replace existing entries' radio button is selected for all three. At the bottom are 'Cancel', '< Back', 'Next >', and 'Finish' buttons. The 'Next >' button is highlighted with a blue circle.



Specify the general options, select 'The user performing the import' and 'New entries only' then click Next >

A screenshot of the 'Specify the general options - New Import wizard' dialog box. It contains several sections with radio button options. The 'Access permissions' section has 'Apply to new and existing entries' selected. The 'External namespaces' section has 'Do not include references to external namespaces' selected. The 'Entry ownership' section has 'The user performing the import' selected. The 'Apply to:' section has 'New entries only' selected. The 'Next >' button at the bottom is highlighted with a red rectangle.

Review the summary options selected then click Next >

A screenshot of the 'Review the summary - New Import wizard' dialog box. It shows a summary of the selected options. The 'Deployment specification' section shows 'Name: Blueprint Name' and 'Description:'. The 'Deployment archive' section shows 'Name: Blueprint Name'. The 'Public folders content' section shows a table with one row: 'Blueprint Name'. The 'Options' section shows 'Include report output versions' and 'Include run history' with 'Replace existing entries' selected. The 'Directory content' section is empty. The 'Next >' button at the bottom is highlighted with a red rectangle.

Choose 'Save and run once' then click Finish

A screenshot of the 'Select an action - New Import wizard' dialog box. It contains a section titled 'Action:' with three radio button options: 'Save and run once', 'Save and schedule', and 'Save only'. The 'Save and run once' option is selected and highlighted with a red rectangle. The 'Finish' button at the bottom is also highlighted with a red rectangle.



Specify the time to run the import select 'Now' and 'Keep the existing report specifications versions' then click Run

Run with options - Blueprint Name

Select when you want to run this import.

Time:  
☒ Now  
☐ Later:  
 May 22, 2008  
 2 : 48 PM

Content:  
 Name  
☒ Content store  
☒ Directory  
☒ Cognos namespace  
☒ Public Folders  
☒ Blueprint Name

Report specification upgrade  
 You may want to keep existing report specification versions for compatibility with existing applications.  
☐ Upgrade all report specifications to the latest version  
☒ Keep the existing report specification versions

Run Cancel

Check 'View the details of this import after closing this dialog' then click OK

Cognos 8

You selected to run 'Blueprint Name' as follows:  
 Time: now  
 Report specification upgrade: Keep the existing report specification versions

☒ View the details of this import after closing this dialog

Click OK to run the import or click Cancel to return to your selection.

OK Cancel

Initial view of the import deployment record will be blank press the 'Refresh' hyperlink

View run history details - Strategic Finance Blueprint

View the details of this particular run.

Start time:  
October 2, 2008 11:48:59 AM

Completion time:  
Unavailable

Status:  
Executing

Messages

Severity: (All)

Entries: 0 - 0

Time Message

No entries.

Close



If the deployment import has not finished click on 'Refresh' again until it shows a completion time then click Close

Cognos Administration admin person Log On

Status Security Configuration

Data Source Connections Content Administration Distribution Lists and Connections Printers Styles Portlets Dispatchers and Services

### View an import deployment record - Blueprint Name - Import

View the details of this particular run.

Start time: December 8, 2008 12:57:54 PM Completion time: December 8, 2008 12:57:55 PM

Status: Succeeded

Messages

Entries: 1 - 1

| Message  | Name   |
|--|--------|
| CM-REQ-2300 Import is complete. 1 object(s) were imported. 0 object(s) failed. | ...> / |

Deployment archive

Name: Blueprint Name

Public folders content

| ...> Name           | Target name         | Disable after import |
|---------------------|---------------------|----------------------|
| ...> Blueprint Name | ...> Blueprint Name |                      |

Options:

Include report output versions  
Replace existing entries

Include run history  
Replace existing entries

Do not include schedules

Directory content

Do not include Cognos groups and roles  
Do not include distribution lists and contacts  
Do not include data sources and connections

General Options

Do not include access permissions  
Do not include references to external namespaces  
Set the owner to the user performing the import

Close

## 4.2. Testing IBM Cognos Dashboards Content

After the Import is performed a new folder will show up a new folder 'Product\_Profitability\_Blueprint' in the IBM Cognos Connection portal. The content of this folder will display as:

**Innovation Center for Performance Management**  
Your connection to best practices and industry leaders

Information Management Cognos software

IBM Cognos Connection

Public Folders My Folders

Public Folders > Product\_Profitability\_Blueprint

Entries: 1 - 5

| Name  | Modified                       | Actions                 |
|---|--------------------------------|-------------------------|
| <a href="#">Dashboards</a>                    | October 22, 2009 10:22:28 AM   | <a href="#">More...</a> |
| <a href="#">Other Dashboard Pages</a>         | September 9, 2009 10:42:20 PM  | <a href="#">More...</a> |
| <a href="#">Packages</a>                      | September 24, 2009 11:14:57 AM | <a href="#">More...</a> |
| <a href="#">Reports</a>                       | October 20, 2009 8:43:01 AM    | <a href="#">More...</a> |
| <a href="#">Product Profitability Console</a> | November 16, 2009 9:41:58 AM   | <a href="#">More...</a> |

To test the content is coming up correctly, launch the 'Salesforce Dashboards and Reports' Page at the bottom of the list. The following screen should come up:

Cognos Viewer - Product Profitability Console

Welcome CFO Sales & Profit Inventory Direct Product Profitability Channels P & L Statement Exp

**IBM**

**Financial Analytics - Product Profitability Blueprint**  
1.0

Licensed Materials - Property of IBM Corp. IBM Cognos business intelligence (BI) and performance management solutions deliver world-leading enterprise planning, consolidation and BI software, support and services to help companies plan, understand and manage financial and operational performance. IBM Cognos solutions bring together technology, analytical applications, best practices, and a broad network of partners to give customers an open, adaptive and complete performance solution. Over 23,000 customers in more than 35 countries around the world choose IBM Cognos solutions.

Java

Then, testing can be performed on each of the dashboard pages to obtain the dashboards displaying your organization's data.