


## Combine IBM InfoSphere & Cognos Solutions to Deliver Greater Information Value

**Omar Khalid**  
Information Management Sales Leader  
IBM Middle East


1

## Synergy across IBM Software to Deliver Strategic Solutions



### Strategic Initiatives that Drive Synergy Requirements

- Collaboration
- Business Optimization
- Information Agenda
- Governance and Regulatory Compliance
- Standardization



**Cognos software**

Performance Management

- Business Intelligence
- Financial Performance Management

**Lotus software**

*Collaboration*

- Collaborative capabilities
- Dashboards Increase user experience

**FileNet software**

*ECM*

- Search & discovery
- Content management
- Governance

**WebSphere software**

*Business Integration & SOA*

- Business optimization
- Operational BI (process integration, rules engine)
- BPM (business monitor, engine)
- Scalability

**Tivoli software**

*Security & System Management*

- Enterprise security
- Increase manageability

**Rational software**

*Development & Project Management Tools*

- Increase development community adoption
- Embedding BI
- Simplify performance testing

**InfoSphere software**

*Trusted Information*

- Trusted information (data lineage, business glossary)
- Advanced analytics
- Scalable information platform

IBM PERFORMANCE EVENTS

2

## IBM Cognos Software Product Portfolio More Employees Make Better Decisions, Faster



### Cognos BI

Ensures **all user communities** receive relevant information how, when and where it is needed

### Cognos Planning

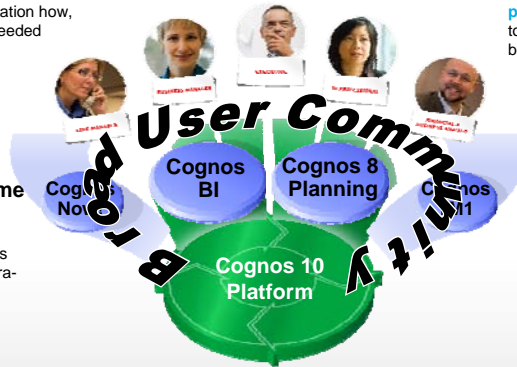
Ensures **high participation planning**, connecting finance to operations for higher business responsiveness

### Cognos Real-time Monitoring

**Continuous real-time monitoring** of business operations for rapid intraday decision making

### Cognos TM1

**What-if scenario modeling** to formulate new business models to drive the business forward



### Cognos 10 Platform

**Complete consistent information** in terms business understands with a purpose-built SOA for enterprise scale

3

IBM PERFORMANCE EVENTS

## Trusted Information Management Create, manage, govern and deliver trusted information



### Get a single view of your business

IBM InfoSphere MDM Server

### Get your arms around your data

IBM InfoSphere Foundation Tools

### Deliver better business intelligence faster

IBM InfoSphere Warehouse



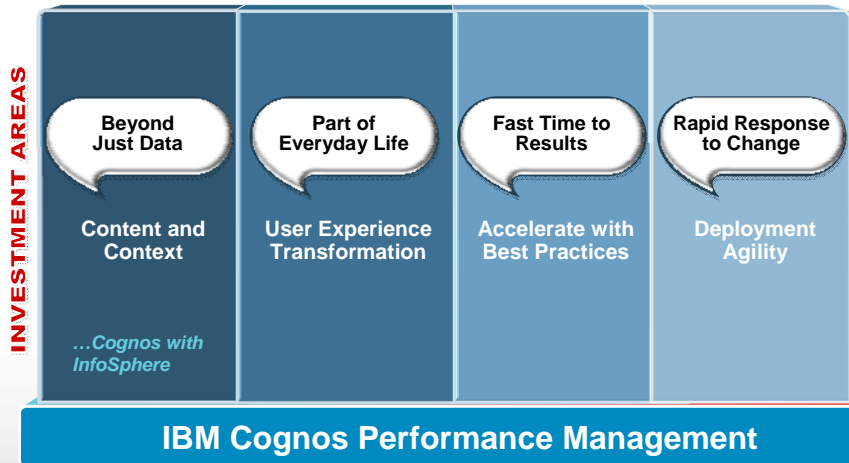
### Consolidate your application infrastructure

IBM InfoSphere Information Server

4

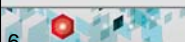
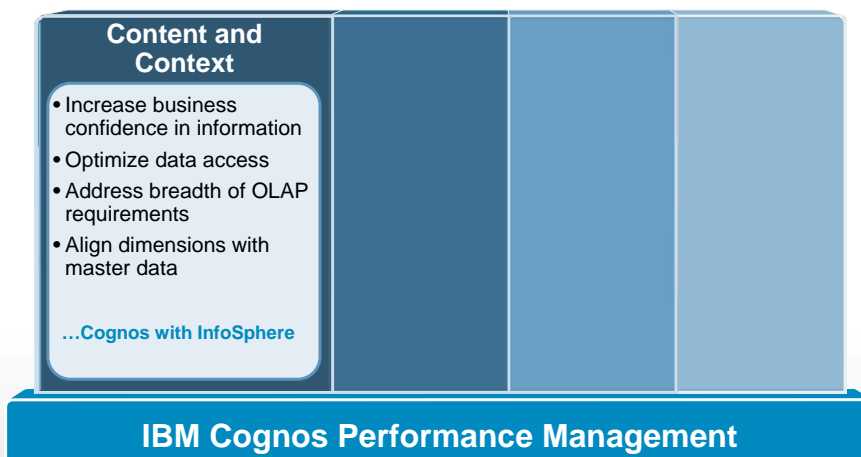
IBM PERFORMANCE EVENTS

## IBM Cognos Software Investment Focus Areas Modular. Open. Integrated.



IBM PERFORMANCE EVENTS

## Focus Areas of IBM Software and Systems Beyond Just Data



IBM PERFORMANCE EVENTS

## Integration with InfoSphere Information Server Dictionary of Terms, Lineage and Data Quality Visibility



**Challenge: Improve business understanding and trust of information**

### Solution

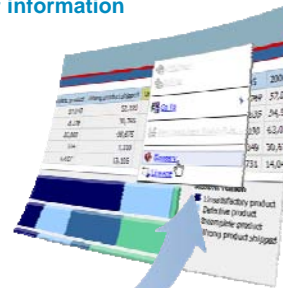
- Direct user access to Business Glossary and Metadata Lineage
- Business Glossary add-on for Cognos use
- Metadata exchange with Metadata Workbench
- Source-to-report lineage in Metadata Workbench
- Quality Assessment Services with Information Analyzer for understanding data quality

### Roadmap Considerations

- Enhance fidelity, breadth and depth of bi-directional metadata exchange for end-to-end lineage
- Enhance visibility into data quality metrics

### Value

- Business can understand what terms mean and where data came from without calling IT



**InfoSphere<sup>®</sup> software**

- Business Glossary
- Metadata Workbench
- Information Analyzer



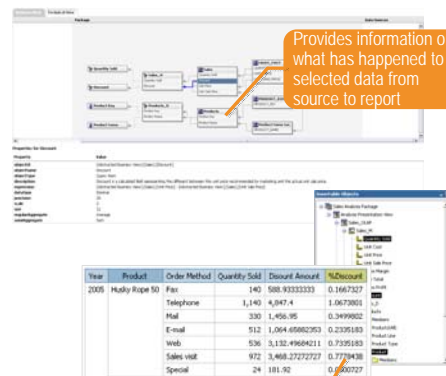
This represents current product plans and strategy that are subject to change. All release dates and capabilities are subject to the Disclaimer.

IBM PERFORMANCE EVENTS

## Lineage in business terms



- Easily understand in business terms where data in reports comes from
  - One-click access from report elements provides descriptions, lineage and source
  - Business view of lineage for each and every report element
  - Technical view with graphical technical view of BI metadata model from report element to source



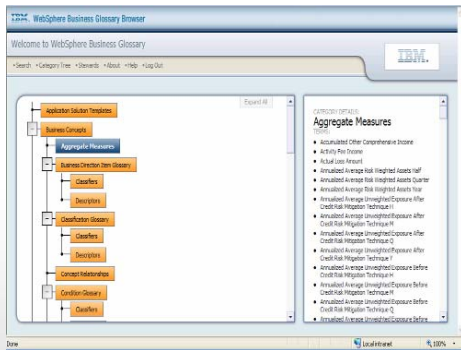
IBM PERFORMANCE EVENTS

# InfoSphere Business Glossary



Business Glossary

Create and manage business vocabulary and relationships and related to physical sources



## Requirements

- Capture business terms and classifications
- Link business terms and classifications to IT assets
- Identify data stewards and make glossary accessible

## Benefits

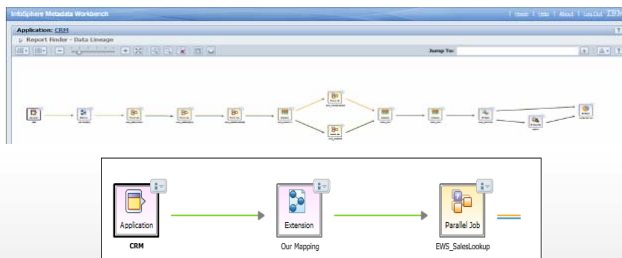
- Context for information is available to everyone, immediately
- IT projects are aligned with data governance
- Collaboration increases across business and IT

# InfoSphere Metadata Workbench



Metadata Workbench

Support information governance with traceability on data movement, modeling & BI applications



## Requirements

- Understand the impact of making changes to information environment
- Visualize and trace information flows across enterprise landscape
- Access and report on operational metadata

## Benefits

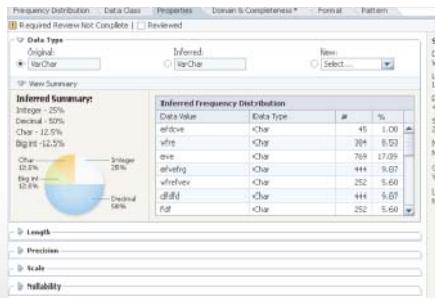
- Avoid system disruptions
- Provide audit information for data governance
- Build trust with LOB users

# InfoSphere Information Analyzer



Information Analyzer

Analyze source data quality and monitor adherence to integration and quality rules



## Requirements

- Perform data quality assessment
- Define business rules to monitor data quality
- Establish stewards for governance of data quality

## Benefits

- Identify data quality issues early to reduce project risks
- Monitor quality metrics over time for compliance
- Create business confidence with trusted information

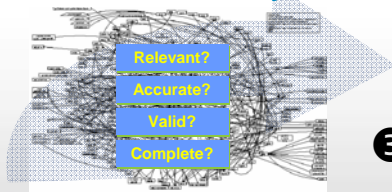
# IBM Data Quality Assessment



## 1 Define business problems

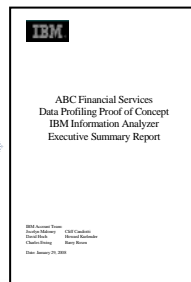
- Increase revenue by cross selling more effectively our services to all clients
- Reduce materials costs by negotiating better prices from our suppliers
- Reduce parts inventory across our manufacturing plants
- Reduce IT costs and improve service levels by consolidating overlapping applications

## 2 Conduct data discovery



## 3 Perform Data Quality Assessment

## 4 Present results and recommendations



## Integration with Master Data Management Complete MDM Portfolio



**Challenge: Align business dimensions and master data across IT and business**

### Today

- Integration with MDM Server aligns business authored dimensions, hierarchies, and attributes with operational master data

### Roadmap Considerations

- Enhance fidelity, breadth and depth of integration with MDM Server

### Value

- Address analytical and operational MDM requirements with an integrated solution



### Cognos 8 Business Viewpoint

#### Strengths

Enable business users to define, govern and share hierarchies and attributes to shape their decision-making



### InfoSphere MDM Server

#### Strengths

Reconciles operational master data into single source of truth for all applications across an organization

**InfoSphere**  
software  
• MDM Server



This represents current product plans and strategy that are subject to change. All release dates and capabilities are subject to the Disclaimer.

**IBM PERFORMANCE EVENTS**

## Focus Areas of IBM Software and Systems Part of Everyday Life



**IBM Cognos Performance Management**

This represents current product plans and strategy that are subject to change. All release dates and capabilities are subject to the Disclaimer.

**IBM PERFORMANCE EVENTS**

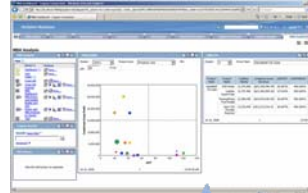
## Integration with InfoSphere Warehouse Data Mining and Text Analytics



**Challenge: Enable more advanced and predictive analytics**

### Today

- Deliver data mining results to a broader audience with Cognos BI
- Text analytics to transform text to structured data for reporting and analysis with Cognos BI



### Roadmap Considerations

- Enhance integration to streamline time to value
- Increasing leverage of predictive models within Cognos BI

### Value

- Understand complex patterns in data and predict the future
- Simplify deliver of data mining results to large business user community

**InfoSphere<sup>™</sup>  
software**

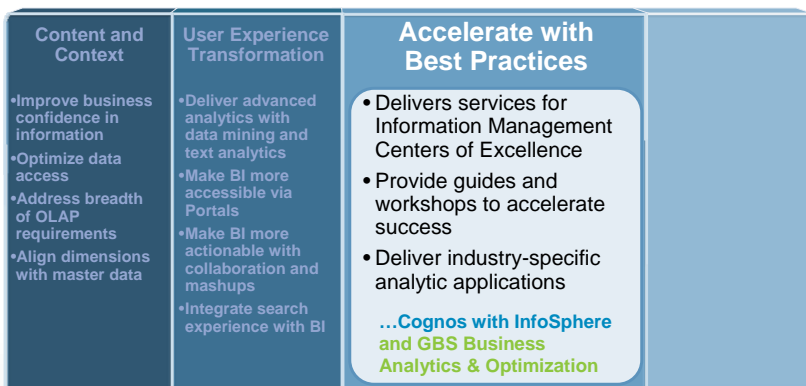
- Warehouse Data Mining Capabilities



This represents current product plans and strategy that are subject to change. All release dates and capabilities are subject to the Disclaimer.

**IBM PERFORMANCE EVENTS**

## Focus Areas of IBM Software and Systems Fast Time to Results



**IBM Cognos Performance Management**

**IBM PERFORMANCE EVENTS**



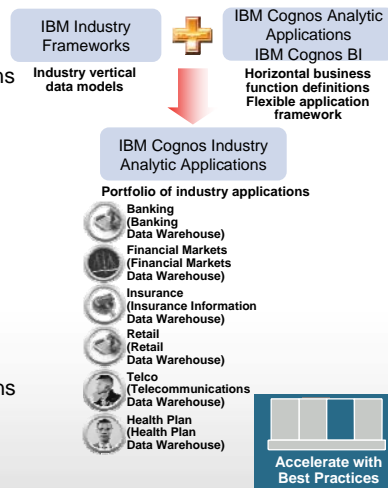
# Integration with Industry Models Solutions



## Challenge: Accelerate time to value with solutions

### Today

- Leverage Industry Frameworks to fast track solutions
  - Workforce Performance in IBM HRO
  - DB2 as target mart for Performance Applications
  - 10 New & Enhanced Industry Solutions with Implementation Services Offerings
  - Leverage GBS Services for solution implementations
- Banking Risk Performance – analytic application leveraging Banking Industry Framework
- **Roadmap Considerations**
- Assess Industry Frameworks for analytic applications
- DB2 embedded in Performance Applications
- Enhance with GBS Services offerings

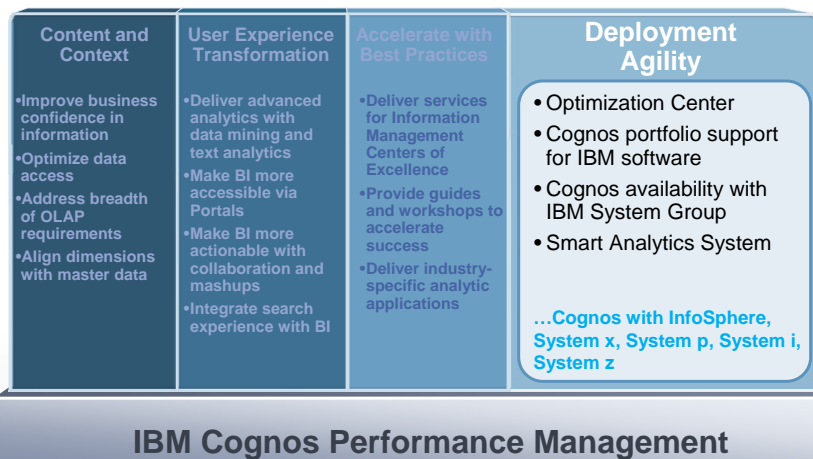


This represents current product plans and strategy that are subject to change. All release dates and capabilities are subject to the Disclaimer.

IBM PERFORMANCE EVENTS

# Focus Areas of IBM Software and Systems

## Rapid Response to Change



This represents current product plans and strategy that are subject to change. All release dates and capabilities are subject to the Disclaimer.

IBM PERFORMANCE EVENTS

## What smart organizations want and need for faster results



**EVERYTHING** you need for *Business Analytics*  
– not just a data warehouse appliance...

### IBM Smart Analytics System

#### Analytics Software

- Business Intelligence
- Cubing Services
- Text Analytics & Data Mining

#### Powerful Data Warehouse

- Warehousing Platform
- Advanced Workload Management
- System Automation

#### Hardware & Services

- Flexible Server Platform Options
- Modular Storage Capacity
- Build, Deploy, Health Check and Premium Support Services



*Transforming  
information into  
business insight*

#### **3x Faster**

Workload optimized analytics  
run business intelligence 3x faster

#### **50% less floor space**

Data compression reduces storage cost

#### **World record performance**

1

IBM PERFORMANCE EVENTS

## And it enables the organization to add capacity and analytic capabilities as requirements evolve.



Start right



Add more capacity

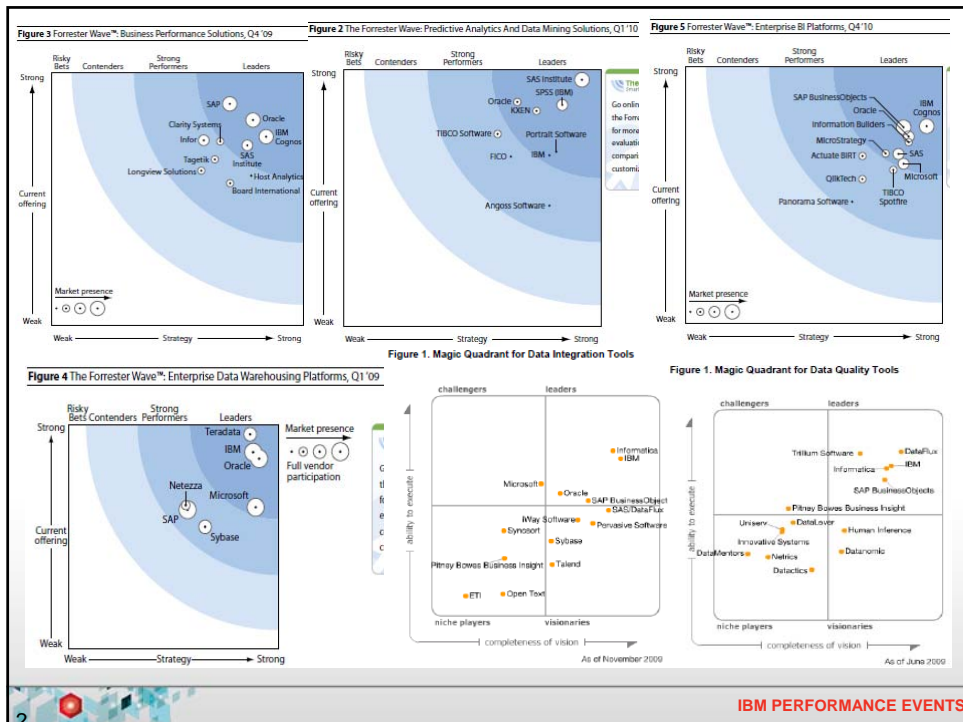


Add new  
analytic capability



2

IBM PERFORMANCE EVENTS



IBM PERFORMANCE EVENTS

## IBM Cognos Software Investment Approach Flexibility and Value with Cognos and InfoSphere



- Modular.** Organizations can **address immediate pain points**
- Open.** Organizations can **utilize existing IT standards and infrastructure** they have in place
- Integrated.** Organizations looking for a **more complete solution** from IBM gain greater value from components **working in concert**

IBM PERFORMANCE EVENTS