



How to Add a Data Server to Connect to a Microsoft SQL Server Database

With these instructions, you will learn how to:

1. Set up the Microsoft JDBC driver for SQL Server
2. Create a new data server
3. Enable single sign-on to SQL Server
4. Set up an Active Directory server to use SQL Server single sign-on

[Open associated video...](#)

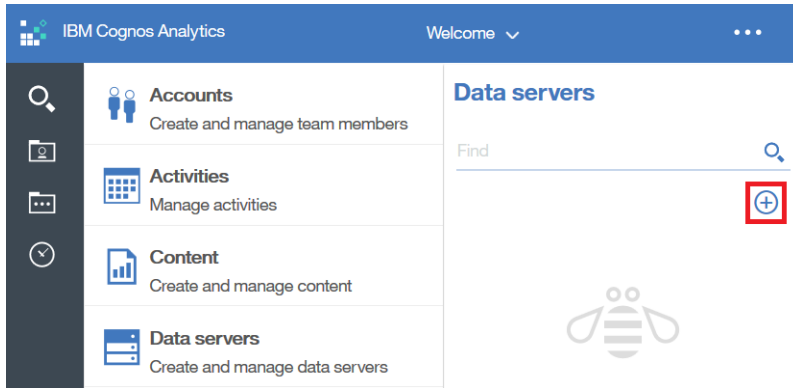
To connect to Microsoft SQL Server, IBM Cognos Analytics 11 needs access to the appropriate JDBC driver. You can download the JDBC driver for your version of SQL Server from the Microsoft Web site.

Steps:

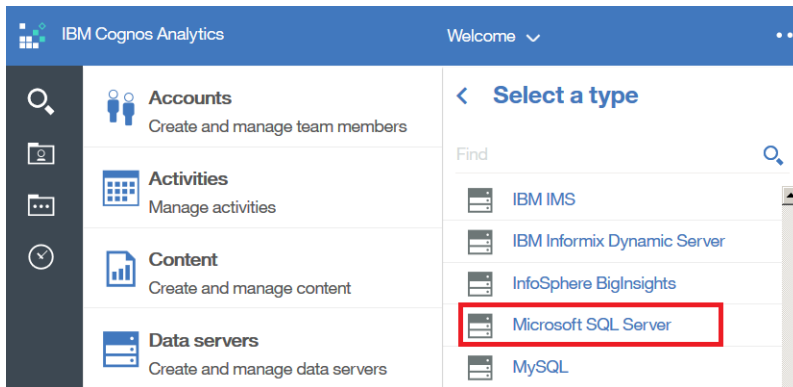
1. Copy the driver and authentication files, sqljdbc4.jar and sqljdbc_auth.dll, to *IBM Cognos Analytics installation\drivers*
 - Note: The authentication file, sqljdbc_auth.dll, is needed only if you are using a single sign-on connection to SQL Server.
2. Stop and then start the IBM Cognos Analytics 11 service so that IBM Cognos Analytics 11 will pick up the new driver.
3. Launch IBM Cognos Analytics 11

4. Click the *Manage* icon , then select *Data servers*  **Data servers**
Create and manage data servers

5. Click the plus icon  to add a new data server.

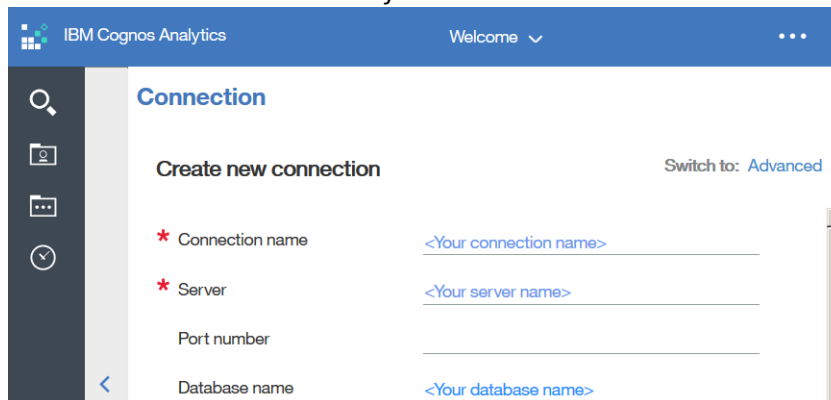


6. Click Microsoft SQL Server (you search for it instead of scrolling):



7. In the *Create new connection* section, enter the following:

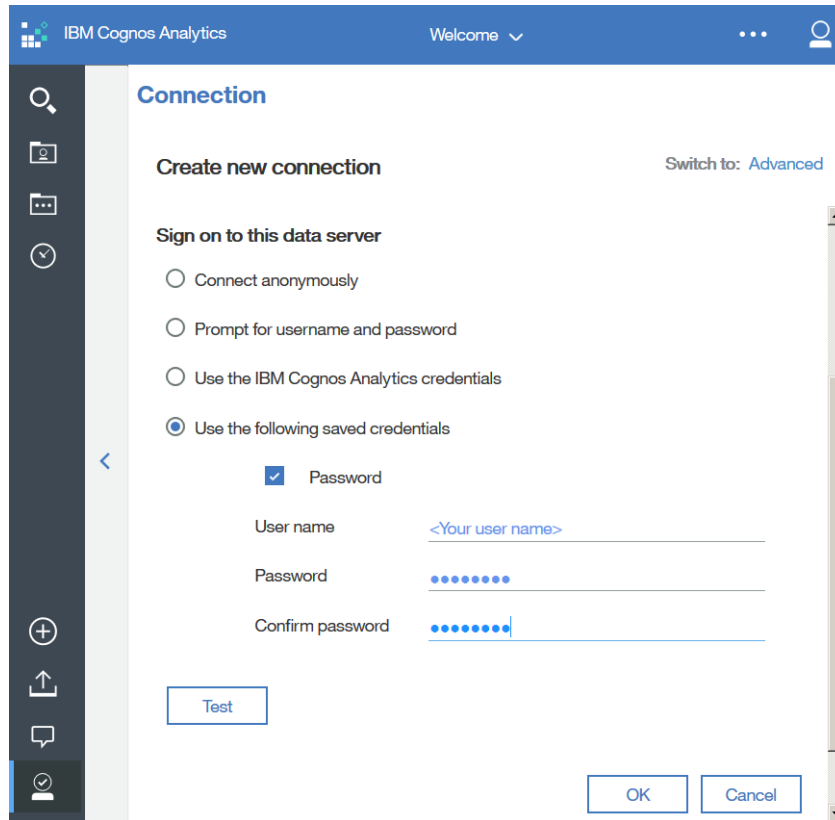
- Connection name: *a name for the data server*
- Server: *the name of the database server*
- Port number: *the port number for the database server*
- Database name: *the name of the database to connect to*




8. Under *Sign on to this data server*, select the type of sign on:

- *Connect anonymously:* (No database security has been configured.)
- *IBM Cognos software service credentials:* (All users will authenticate to the database with the same credentials as the Cognos Analytics Server.)

- *Prompt for username and password:* (Every time a user runs a report they will be prompted for user ID and password.)
 - *Use the IBM Cognos Analytics credentials:* (Use the same credentials that the user logged in to Cognos Analytics with to access the Microsoft SQL Server database.)
 - *Use the following saved credentials:* (All users will use the credentials specified.)
9. If you are using SQL Server authentication, select *Use the following saved credentials*. Click the *Password* checkbox and enter the user name and password for the Microsoft SQL Server database:



10. Click the *Test* button to test the connection to the Microsoft SQL Server database. If the connection is successful, the success symbol  *Success* will appear. If the connection fails, check your connection and credentials information, and click *Retry* to retest.

11. Click *OK*.

Congratulations! You have learned how to create a new data server for Microsoft SQL Server.

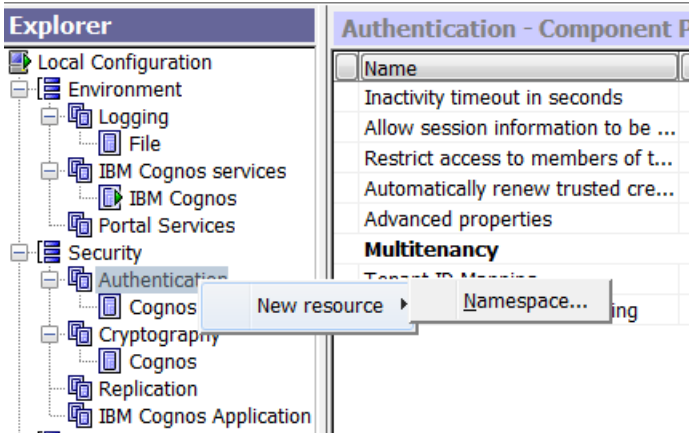
In order to use either the *Use the IBM Cognos Analytics credentials* or the *IBM Cognos software service credentials* option, the single sign-on connection to SQL Server must be enabled. In addition, to use the *Use the IBM Cognos Analytics credentials* sign-on option, you must use an Active Directory namespace for authentication.

Steps:

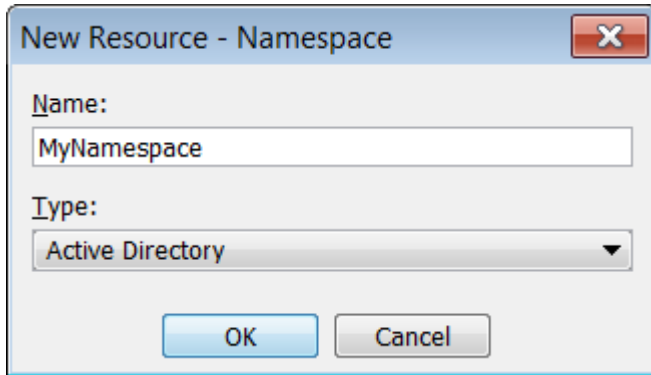
1. Locate the file `databaseDriverLocations.properties.sample` under *IBM Cognos Analytics installation\5dataserver*
2. Remove the text “.sample” from the filename.
3. Edit the file `databaseDriverLocations.properties`:
 - In `databaseClasspath`, point to the location and name of the SQL server JDBC driver:
`databaseClasspath=D:\\Progra~1\\ibm\\cognos\\analytics\\drivers\\sqljdbc4.jar;`
 - In `databaseJNIPath`, point to the location of the `sqljdbc_auth.dll`:
`D:\\Progra~1\\ibm\\cognos\\analytics\\drivers`

Notes:

- The paths must be absolute, and no spaces are allowed.
 - For Windows, the list of directories is semi-colon delimited, and double back slashes are used in the paths.
 - For UNIX, the list of directories is colon delimited, and single forward slashes are used in the paths.
4. Save the file.
 5. Launch IBM Cognos Configuration.
 6. Under *Security* in the *Explorer* panel, right-click *Authentication* and select *New resource > Namespace...*

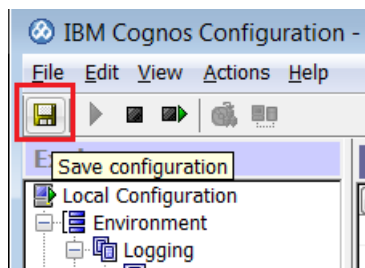


- In the *New Resource* dialog, enter a name for the new namespace, select “Active Directory” as the type, and click *OK*.



- In the *Resource Properties* panel for the new namespace, enter an ID for the namespace, and enter the host and port for the Active Directory server, separated by a colon (host.domain.com:###).

| MyNamespace - Namespace - Resource Properties | |
|---|---------------------------------|
| Name | Value |
| Type | Active Directory |
| * Namespace ID | <Enter an ID for the namespace> |
| * Host and port | <Host>:<Port#> |
| Time out in seconds | -1 |
| Size limit | -1 |
| Binding credentials | ***** |
| Application Tier Components sA... | |
| Multitenancy | |
| Tenant ID Mapping | |
| Tenant Bounding Set Mapping | |
| Advanced properties | <click the edit button> |



- Save the configuration changes.
- Stop and restart the IBM Cognos Analytics service to register the changes.