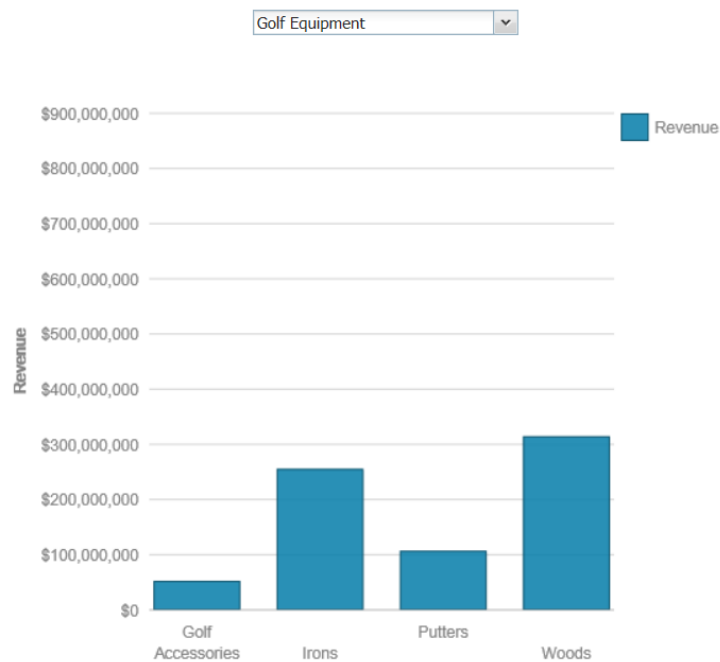


BI Version	Reporting Type	Visualization Type	Difficulty Level
Cognos 10.2.2	Active Report	RAVE	Intermediate
Sample data: Go Sales (query) package			
Visualization: Column – Clustered (vis.sample.clusteredcolumn.default)			

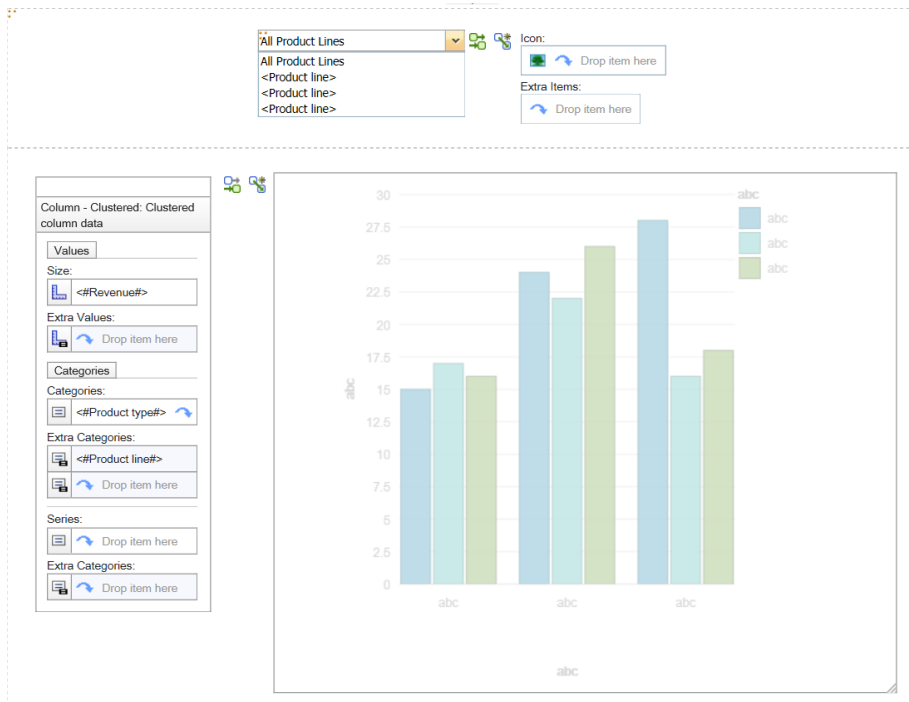
TIP 1: DISPLAY “ALL” OR ONLY FILTERED VALUES IN A RAVE CHART

Explore **No Value List Items, Extra Categories, and Category Ranges** within your reports.

We would like to create an Active Report that uses a Data Drop-Down List to filter a Clustered Column visualization. The user would be able to view the revenue for all product lines, or for each individual product line. When completed, the report looks like this:



In Report Studio, the same completed report looks like this:



STEP-BY-STEP

1. Create a new *Blank Active Report* using the sample *Go Sales (query)* package
2. From the Toolbox, drag in a layout Table with one column and two rows:

Insert Table [Help](#) ✕

Table size

Number of columns:

Number of rows:

Table style

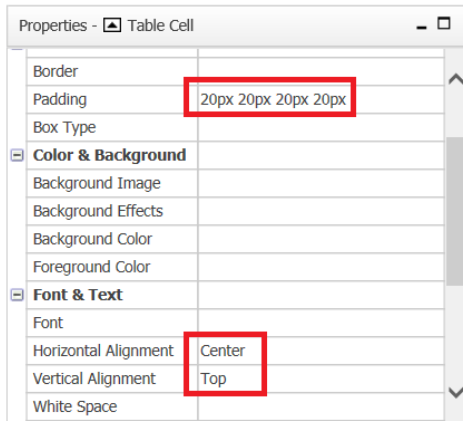
Maximize width

Show borders

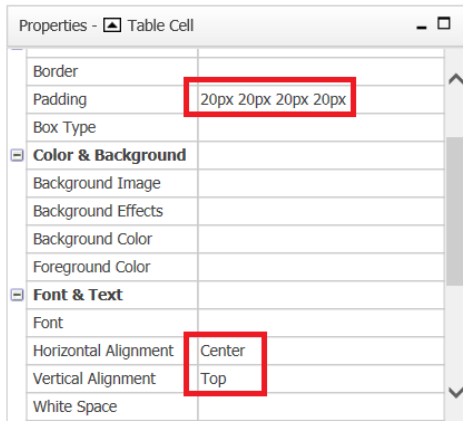
3. Drag a Data Drop-Down List into the top Table Cell. Populate it with data ([Sales (query)].[Products].[Product line])



4. Select the Table Cell and set these three Properties:

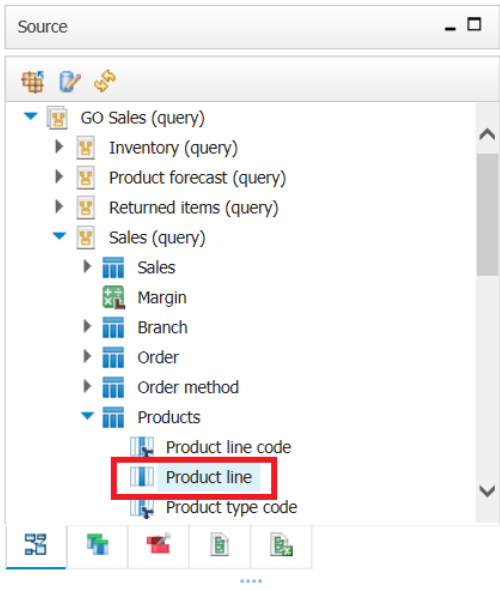


5. Drag a Clustered Column visualization into the second Table Cell. Populate it with data:
- a. Size: [Sales (query)].[Sales].[Revenue]
 - b. Categories: [Sales (query)].[Products].[Product type]
6. Select the Table Cell and set these three Properties:

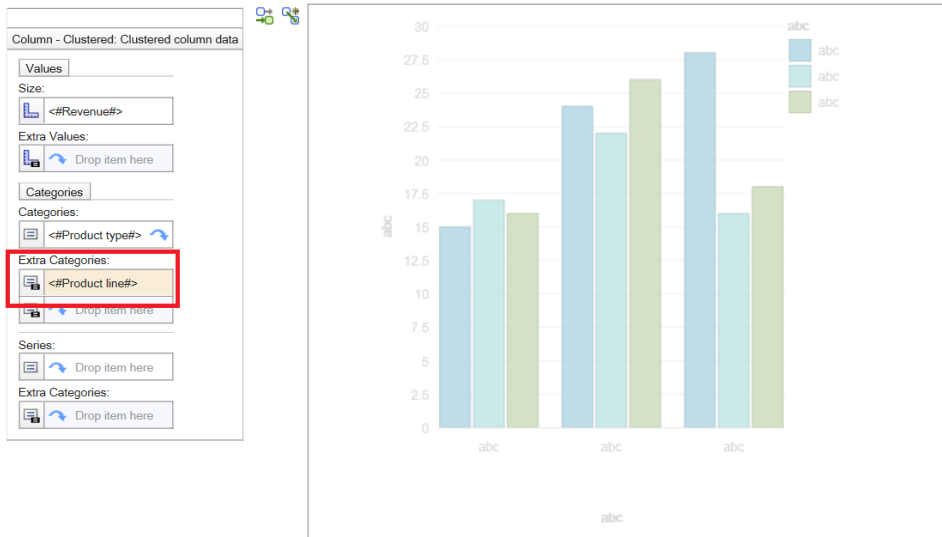


7. The chart is showing Product Type and Revenue. Even though the chart is not displaying Product Line directly, this item needs to be in the chart's query so that we can filter on it. You add Product Line by finding the data item:

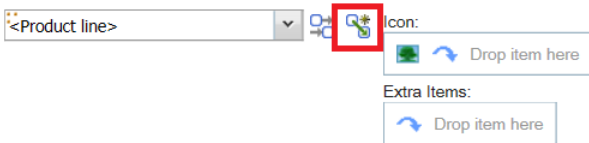




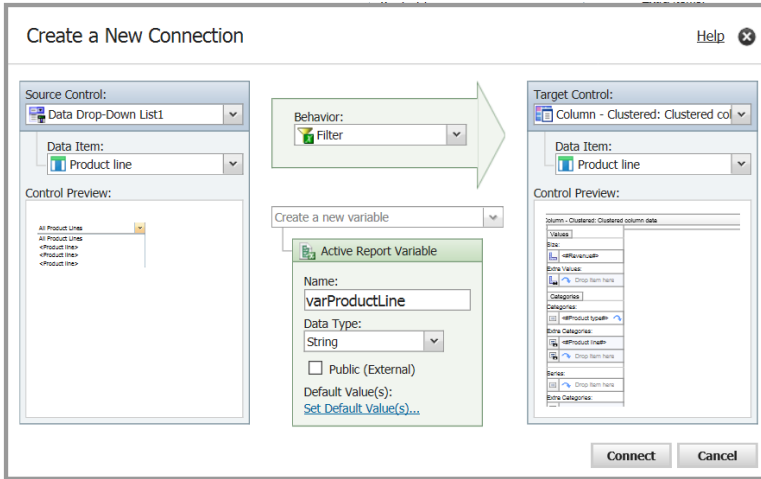
and dropping it into the *Extra Categories* box in the *Categories* section of the visualization:



8. From the Data Drop-Down List, click the New Connection button:

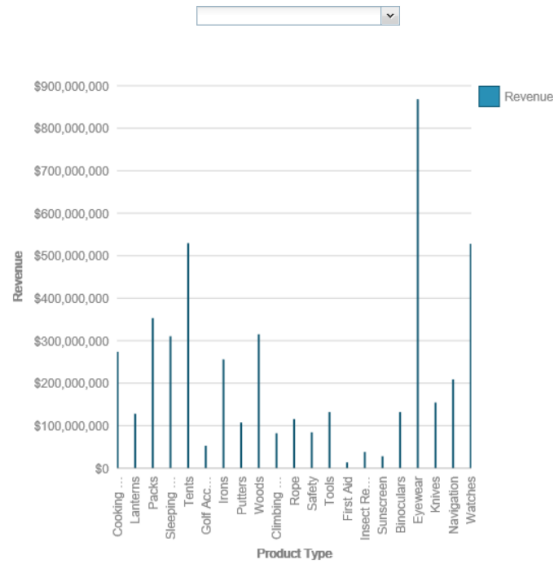


and connect the dropdown to the chart like this:

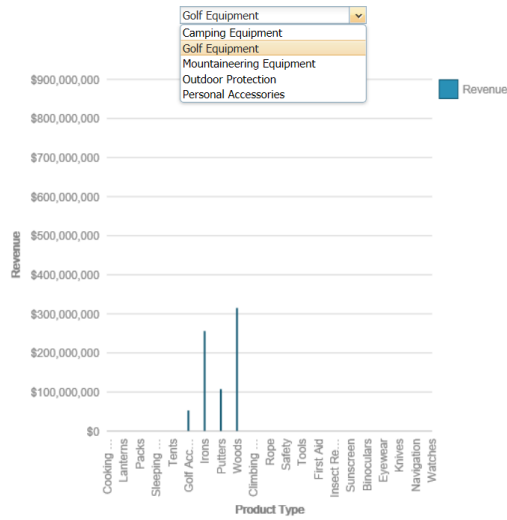


HOW DO I ADD "ALL" TO THE DROPDOWN LIST?

By default, when the report is first run, the first item in the dropdown is empty and the dropdown contains values for each product line. The chart is showing values for all of the product lines:

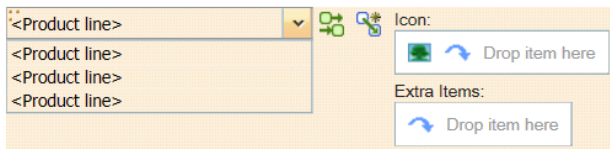


Once you select a specific product line, you can never go back to all product lines:

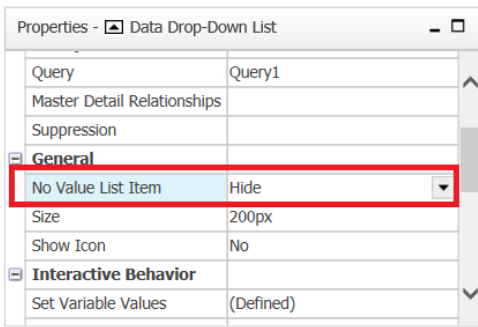


To correct this problem:

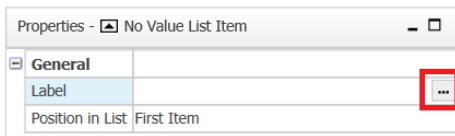
1. Select the Data Drop-Down List:



2. Specify a default list item by changing the *No Value List Item* property to *Show*:



3. In the newly-created No Value List Item object's properties, click the ellipsis button:



4. Enter "All Product Lines" and click OK:

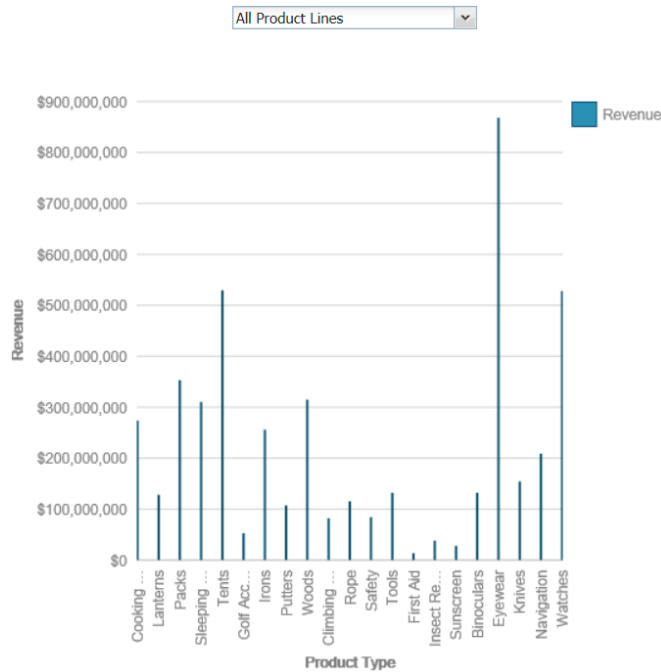
Label Help

Default text:
All Product Lines

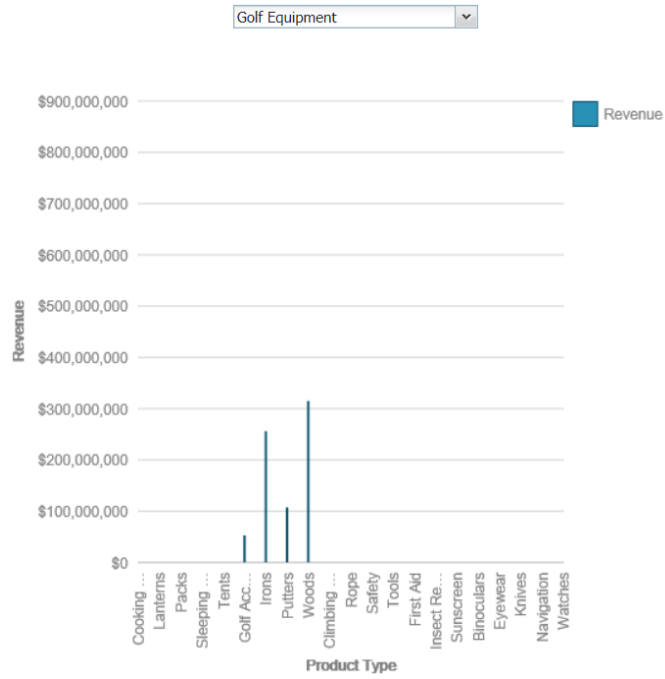
Language: Text

OK Cancel

Now if you run the report it looks like this:



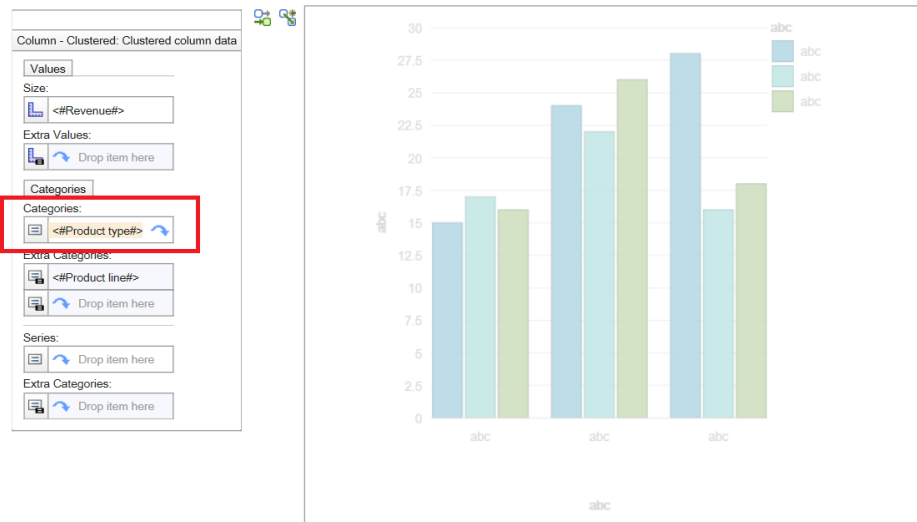
And if you select a specific Product Line (e.g. Golf Equipment), you get this result:



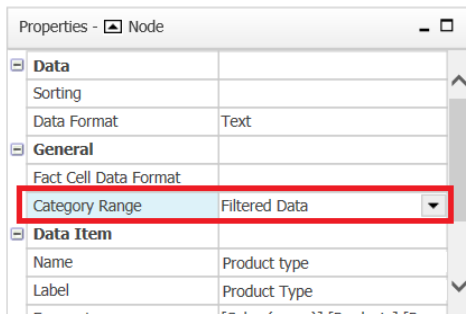
HOW DO I HIDE THE EXTRA UNFILTERED VALUES IN THE CHART?

In the image above, we just want to see the selected Product Line (e.g. Golf Equipment) in the chart, not all of the Product Lines. The chart is currently showing all of the categories, including the ones that have been filtered out and thus have no value. To correct this problem:

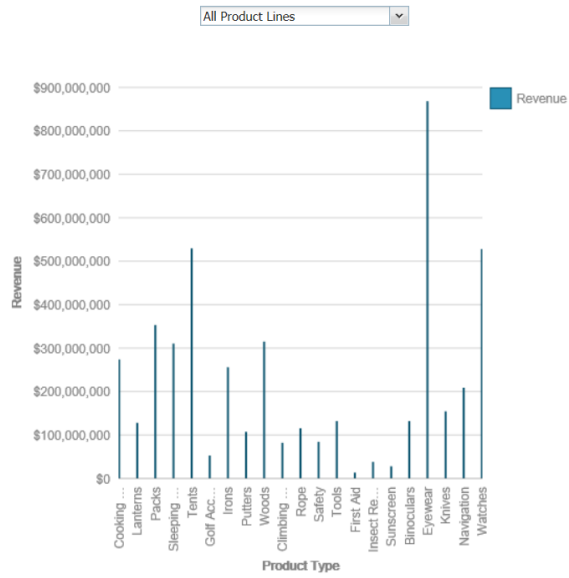
1. Select the `<#Product type#>` item:



2. In the Node's properties, change the *Category Range* to *Filtered Data*:



Now when we run the report, we will see all of the product lines at first:



and we will only see individual product lines in the chart when we filter it:

