

Setup Document for *Strategic Finance Blueprint*

1. This application was developed in Analyst 8.1
2. The Analyst model supporting this blueprint uses the following library number:
 - 909809601 Strategic Finance
3. If you have already used this library number then you need to perform a number of steps.
 - a) In Analyst Administration, note the name and Windows folder of the current library using the above library number.
 - b) Remove the references to that library.
 - c) Add a library pointing to the Strategic Finance Blueprint Library Windows folder.
 - d) Create a new library and Windows folder and move the objects from the library in step c to this library using the File Library Objects Move function.
 - e) Remove the reference to the library in step a) and delete the Windows folder.
 - f) Add the library removed in step c).

NOTE: If you moved the existing library in step b to a new library and it was linked to a Contributor application you will not be able to synchronize.

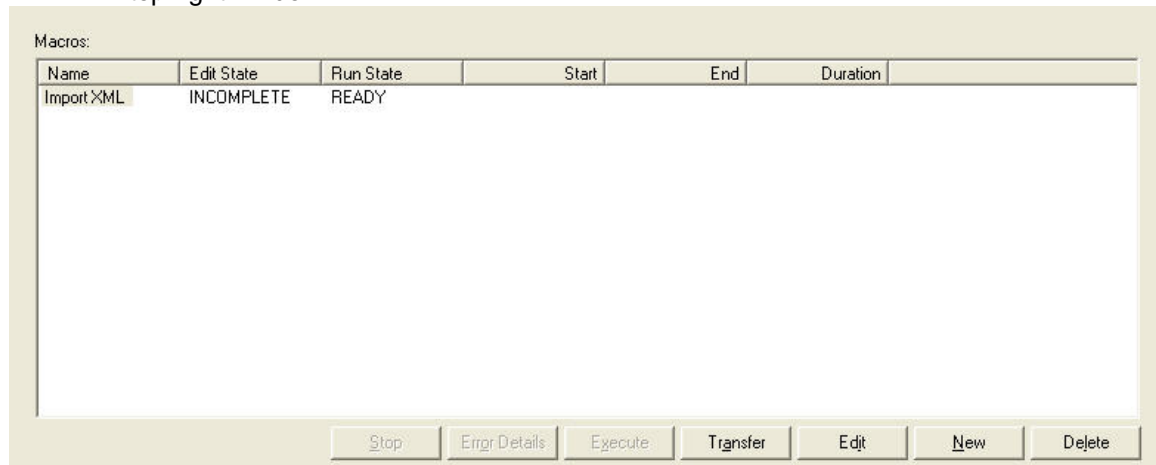
4. Create a Contributor application using the newly created Analyst library

The eList to choose during creation of the *Strategic Finance Blueprint* Library is named "eList" and can be found in the elist folder.

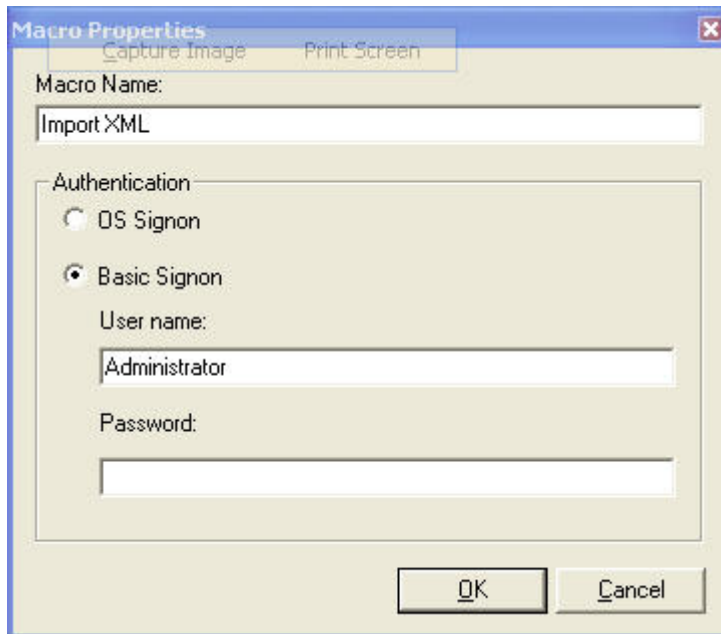
NOTE: It is highly recommended that this application be set up in a development environment and not in the production environment.

5. Locate the xml file folder. The XML file will provide you with the basic application structure including the navigation and orientation of cubes and access tables for this application. The steps to import the XML follow:

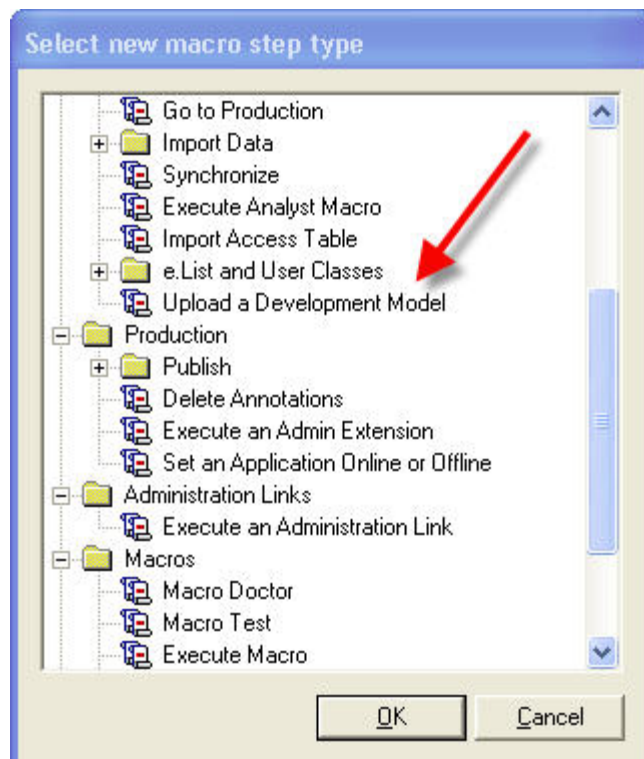
- a) From the Admin console, select Macros and then select the "New" button on the top right window.



- b) Create a new Macro called "Import XML" and sign on using the appropriate sign on.



- c) Select "Upload a Development Model" under the "Development" Folder as shown below.



From the next window, select the Application – **Strategic Finance**

- d) Under “Model Definition File Path” paste the path and filename where you saved the XML file. You may also want to paste the path in the box to “Save any generated datastore scripts to file:”

Upload a Development Model

Macro Step Name:
Upload a Development Model

Application:
Datastores/WBURVANLIERR3\L/Applications/strategic_finance_bp

Model Definition File path (Enter Local Application Server Path):
C:\Models\Strategic Finance\Updates\XML\strategic_finance_bp.xml

Save any generated datastore scripts to file:
C:\Models\Strategic Finance\Updates\XML\

- e) At the bottom of this screen, press the “Validate” button to test.

Validation Report (out of date):

Parameter	Problem
Application	No value has been set
Model Definition File pat...	No value has been set
Save any generated dat...	No value has been set

Validate New OK Cancel Help

- f) When validation is complete, select OK and then select the “Execute” button from the original macro window. (be sure the Macro is highlighted)

Macros:

Name	Edit State	Run State	Start	End	Duration
Import XML	COMPLETE	READY			

Stop Error Details Execute Transfer Edit New Delete

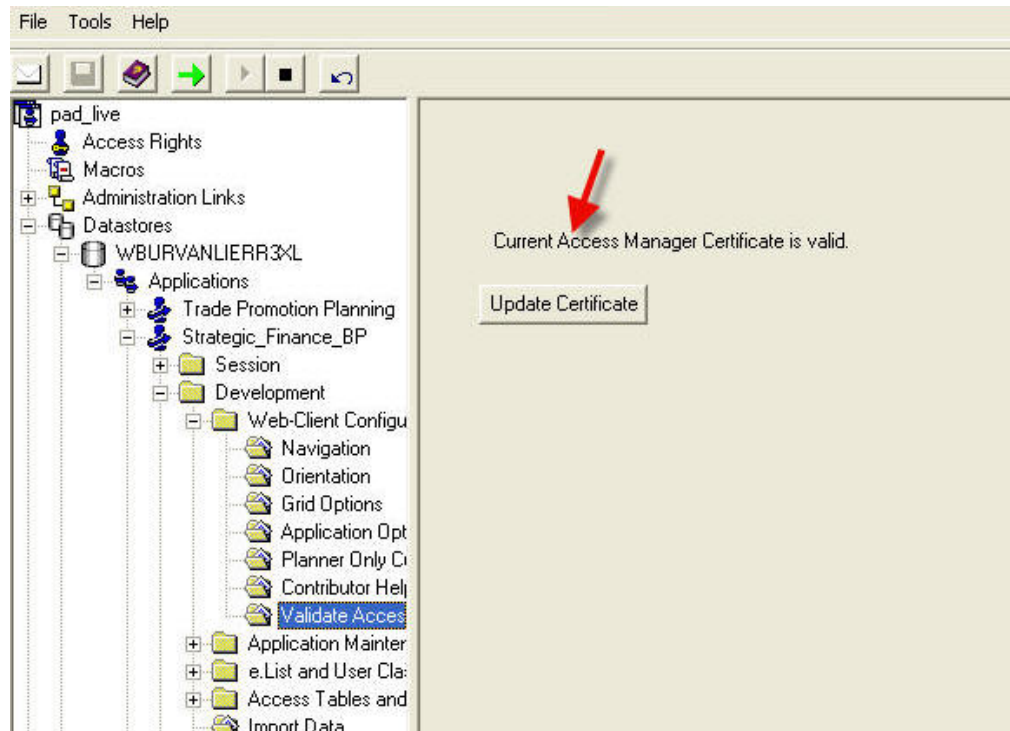
Macro Steps for 'Import XML':

Name	Edit State	Run State	Progress	Start	End	Duration
Upload a Develo...	COMPLETE	READY				

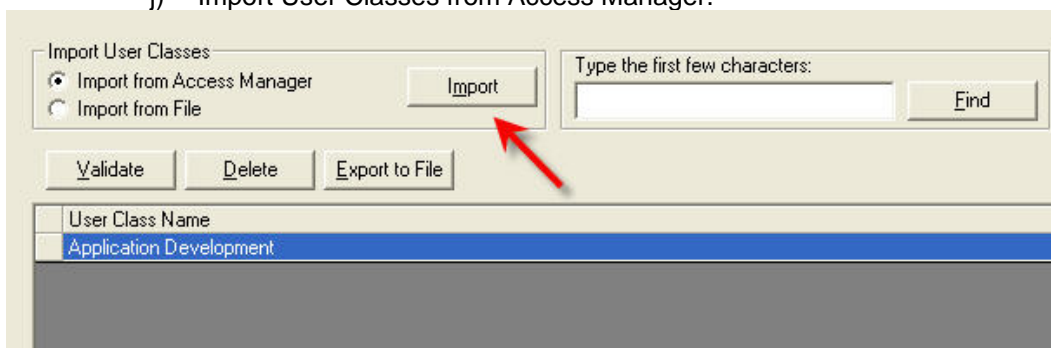
- g) You will see a message that the macro is running. Press OK. You should then see a message that the macro has executed successfully.

Name	Edit State	Run State	Progress	Start	End	Duration
Upload a Development M...	COMPLETE	SUCCEEDED		10/23/2007 2:55:48 PM	10/23/2007 2:...	13 second

- h) The next step is to add users and rights. In the Admin console expand the Strategic Finance application and select Development | Web-Client Configuration | Validate Access Manager Certificate. Then press the Update Certificate button.



- i) Remove any existing user classes, **press save**.
- j) Import User Classes from Access Manager.



- k) Assign Rights and run a Go to Production.

6. Check that the following settings exist in Web-Client Configuration:
- Allow Reviewer Edit is checked in the Application Options tab
 - Allow Multi e.List Item Views is checked in the Grid Options tab

Note: The eList file is provided in Excel and Text format, with column headings and a worksheet named elist.

The Analyst model is populated with data. You can choose to populate the application by running Analyst to Contributor D-Links for every cube. These links have not been setup as you may wish to use other data. You can elect Match Description on all of the D-List dimensions unless you are using another elist in which case you must allocate the elist items.

7. Run a GTP