



---

## Highlights

- Quickly assess how report content is affected by changes made to your software environment
  - Compare and validate report content in two environments to streamline the upgrade process
  - Easily assess the effects of changes to a single environment for faster installation of refresh packs, data source updates, etc.
  - Increase IT productivity and respond to changing business requirements quickly
- 

# IBM Cognos Lifecycle Manager

*Streamline upgrades. Meet changing business and IT requirements quickly.*

## Overview

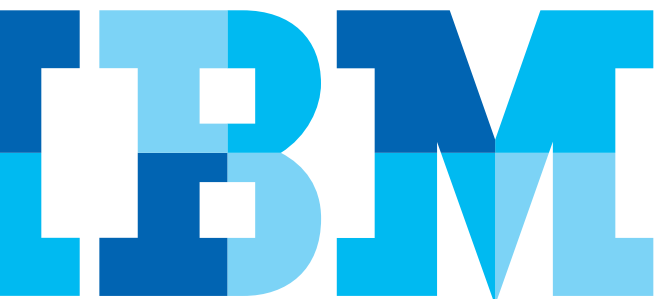
When IT makes an upgrade to their systems or introduces a change to their environment, they need to ensure that report content from their business intelligence systems has not been adversely affected.

But verifying this content can be tedious and time-consuming. Thousands of reports need to be tested and compared, side by side, and issues identified for repair. The opportunity for error runs high, especially when managing such high numbers of reports.

IBM Cognos® Lifecycle Manager is a utility that automates the process of testing IBM Cognos Business Intelligence report content for multiple environments. Cognos Lifecycle Manager validates, generates and then compares report output to ensure there are no differences in reports after upgrading or introducing any type of change to the software environment.

## IBM Cognos Lifecycle Manager

Cognos Lifecycle Manager offers powerful benchmarking tools for applying fix packs or refresh packs. IT organizations take a snapshot of their reports before and after the fix pack or refresh pack is applied to the environment, to quickly verify if reports are affected by the change.



### IBM Cognos 10: Intelligence Unleashed Smarter Decisions. Better Results.

Cognos 10 delivers a revolutionary new user experience and expands traditional business intelligence (BI) with planning, scenario modeling, real-time monitoring and predictive analytics. With the ability to interact, search and assemble all perspectives of your business, Cognos 10 provides a limitless BI workspace to support how people think and work.

Cognos 10 enables organizations to outperform by providing:

- **Analytics** that everyone can use in a BI workspace that sharpens individual skills to answer key business questions
- **Collective intelligence** with built-in collaboration and social networking to connect people and insights to gain alignment
- **Actionable insight** everywhere in mobile, real-time and business processes to instantly respond at the point of impact

Built on a proven technology platform, Cognos 10 is designed to upgrade seamlessly and to cost-effectively scale for the broadest of deployments. Cognos 10 provides you and your organization the freedom to see more, do more—and make the smart decisions that drive better business results.

Cognos Lifecycle Manager is a stand-alone application that runs in its own Apache Tomcat instance. It compares reports using any supported language or output format and requires very little configuration. Lifecycle Manager provides instant value during the upgrade process — it organizes the upgrade process into logical steps and provides project management features that track issues and report on project status.

### Intuitive UI assists workflow and simplifies report verification

Cognos Lifecycle Manager streamlines the process of upgrading or changing over to a new system and assessing how those changes affect report output. The UI (user interface) follows a logical workflow that maximizes efficiency, and brings to your attention only the elements that require it.

The UI organizes the upgrade project by task, in the order that tasks are completed:

1. Source Validation
2. Source Execution
3. Target Validation
4. Target Execution
5. Comparison
6. Task Summary

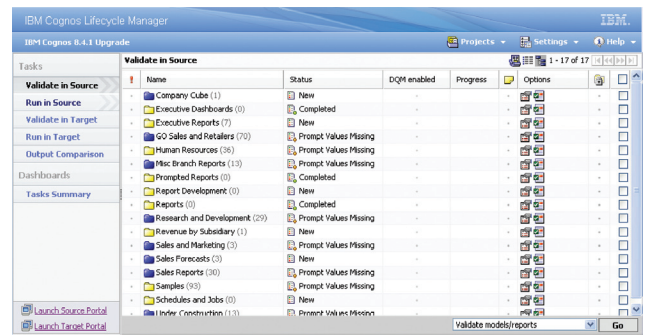


Figure 1. The Cognos Lifecycle Manager user interface is simple and guides IT through the upgrade process.

### Features and benefits

Key features of Cognos Lifecycle Manager allow you to:

- Improve your upgrade process with an efficient, workflow-driven UI
- Validate report content between two environments or within a single environment with a single click
- Easily verify prompts pages with the option to automatically generate prompt values
- Identify validation or report execution errors immediately, and link directly to the IBM Technotes site for help
- Easily approve or reject reports that show differences and add notes to individual report objects for future reference
- Generate a Flash-based Task Summary Report and distribute it as a fully functional Adobe Flash file
- Compare reports using any supported language or output format

## One-click Report Comparison

Single-click comparison is a feature that speeds up report comparison. With this feature, three different operations are performed at once:

- 1) Reports are generated in the source environment and returned to Lifecycle Manager
- 2) Reports are generated in the target environment and returned to Lifecycle Manager
- 3) Both report versions are compared.

Once the comparison is completed, IT can view and analyze the reported differences between versions.

## Automatically Generate Prompt Values

Cognos Lifecycle Manager helps IT dramatically reduce the amount of time it takes to compare reports from two environments with the ability to automatically generate prompt values. Reports that contain prompts must be given values in order to generate the report — the Automatically Generate Prompt Values feature lets IT automatically add these values to reports in both the source and target environments.

IT simply selects from a list of folders that contain reports with prompts — Lifecycle Manager already knows which environment to run the reports in.

This feature saves time and ensures consistency. Even IT resources unfamiliar with the individual reports can quickly create the required values. Values are created once and then saved with the project, ensuring consistency throughout the verification process.

## Build better models faster

Cognos Framework Manager not only helps metadata modelers build an enterprise representation of the business, it helps them easily manage and maintain it. This allows IT to respond faster to changes the business requires.

## Flash-based Task Summary Report

The Task Summary screen shows the overall upgrade project status. This screen identifies each task and displays the number of reports associated with that task for the source and target environments. The Compare task summarizes what has already been completed.

The Total section at the bottom of the screen displays individual report status and any associated notes. It also shows execution times of reports for both environments.

Tasks	Validate	Source	Target	Run	Source	Target	Compare	
Validate	120	Valid	29	Succeeded	28	28	No Differences	1
Run	110	Invalid	0	Fail	0	0	Differences	1
Compare	56	New	3	New	0	0	New	0
Total	286	Prompt Missing	0	Prompt Missing	0	0	Prompt Missing	0
				In Progress	0	0	In Progress	0
				Partial Success	0	0	Partial Success	0
				Visual	0	0	Visual	0
				Approve	0	0	Approve	0
				Request	0	0	Request	1

Name	Source Run (Sec)	Target Run (Sec)	Progress
Percentage Calculation (by year)	12.268	12.099	
Recruitment Report	8.562	2.425	
Revenue by SO Subsidiary 2005	2.928	1.562	
Rolling and Moving Averages			
Top 10 Retailers for 2003			

Figure 3. Flash Task Summary Report allows IT to quickly view results of reports generated in both environments.

## Conclusion

Cognos Lifecycle Manager automates and simplifies the validation of report content between two software environments or a single software environment. With Cognos Lifecycle Manager, IT organizations can dramatically reduce the time it takes to compare reports between versions of Cognos Business Intelligence. IT can better manage the lifecycle of your deployed Cognos Business Intelligence application, thus reducing the costs of system management and increasing ROI.

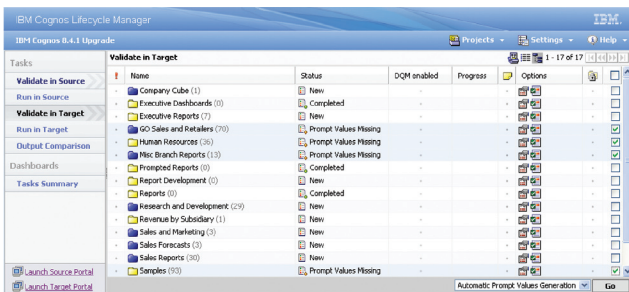


Figure 2. In this example, Cognos Lifecycle Manager is set to automatically generate prompt values for over 200 reports.

## About IBM Business Analytics

IBM Business Analytics software delivers complete, consistent and accurate information that decision-makers trust to improve business performance.

A comprehensive portfolio of business intelligence, advanced analytics, financial performance and strategy management and analytic applications gives you clear, immediate and actionable insights into current performance and the ability to predict future outcomes.

Combined with rich industry solutions, proven practices and professional services, organizations of every size can drive the highest IT productivity and deliver better results.

## For more information

For further information or to reach a representative: [ibm.com/cognos](http://ibm.com/cognos).

## Request a call

To request a call or to ask a question, go to [ibm.com/cognos/contactus](http://ibm.com/cognos/contactus).

An IBM Cognos representative will respond to your enquiry within two business days.



---

© Copyright IBM Corporation 2010

IBM Canada Ltd.  
3600 Steeles Ave. East  
Markham ON L3R 9Z7  
Canada

Produced in Canada  
October 2010  
All Rights Reserved

IBM, the IBM logo and [ibm.com](http://ibm.com) are trademarks or registered trademarks of International Business Machines Corporation in the United States, other countries, or both. If these and other IBM trademarked terms are marked on their first occurrence in this information with a trademark symbol (® or ™), these symbols indicate U.S. registered or common law trademarks owned by IBM at the time this information was published. Such trademarks may also be registered or common law trademarks in other countries. A current list of IBM trademarks is available on the Web at "Copyright and trademark information" at: [ibm.com/legal/copytrade.shtml](http://ibm.com/legal/copytrade.shtml).

Other product, company or service names may be trademarks or service marks of others.

References in this publication to IBM products or services do not imply that IBM intends to make them available in all countries in which IBM operates.

P25261



Please Recycle