

# An Introduction to TM1

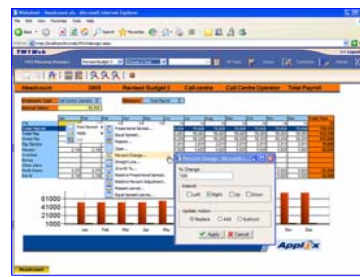
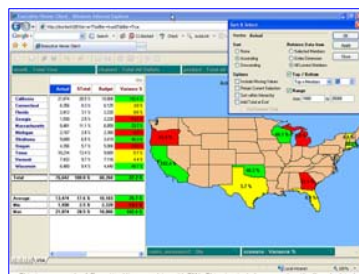
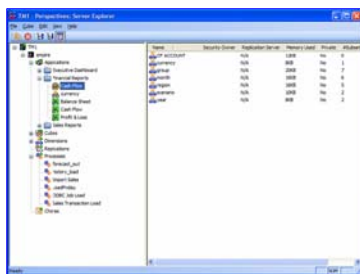
Mike Jeffery

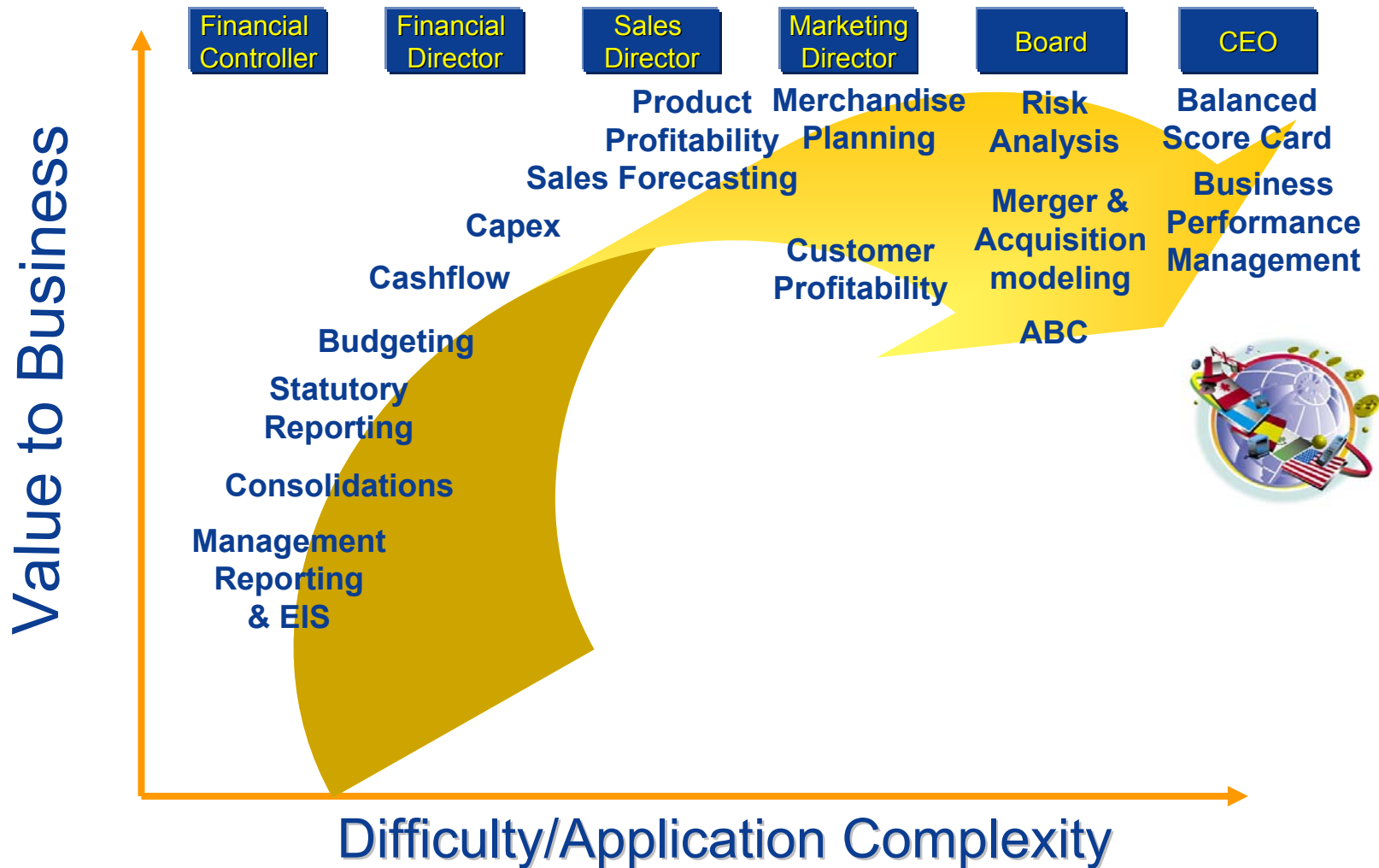
**Cognos.**  
software



## Introducing IBM Cognos TM1

- In-Memory, Real-Time, Read/Write OLAP engine
- Self service analysis with Excel interface
- Integration to the Cognos 8 Platform
- Business “What-if” scenario modeling and optimization
- Link Analysis and Modelling for faster problem resolution
- IT controlled but business owned solution





# IBM Cognos TM1 model building blocks

- Dimensions

Chart Of Accounts, Time, Years, Versions, Customers  
etc.....

- Cubes

Two or more dimensions

- Rules

Your business logic

Excel : = sum(d34:d40)/e4\*sheet1!e28 +50,000

TM1 : ['Margin %'] =[' Margin ']/ ['Sales']

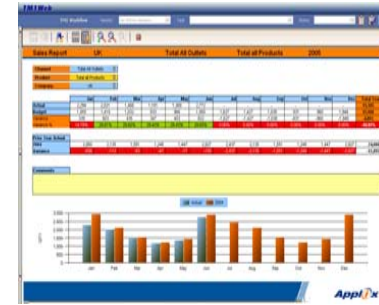


Thick Client /  
Citrix / Terminal  
Services

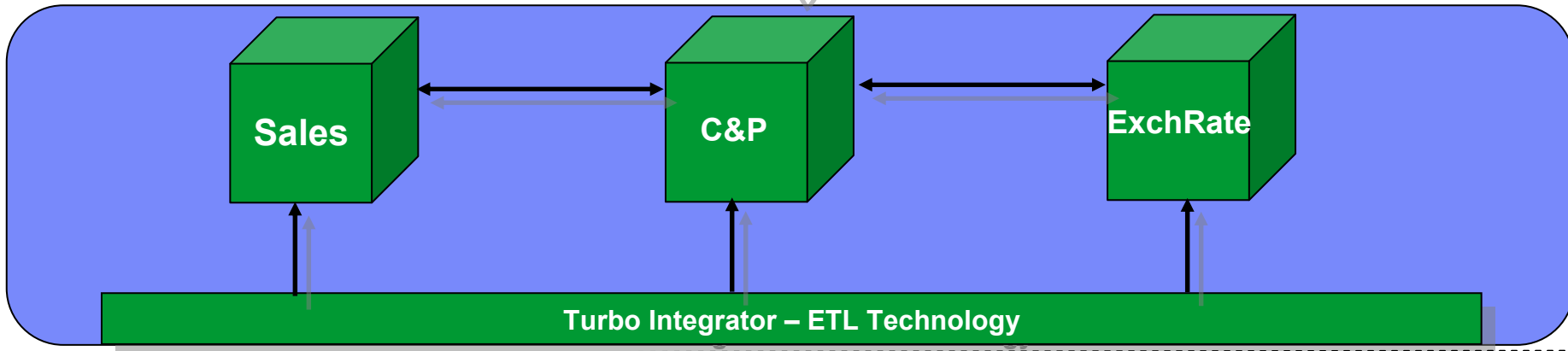


Thin Client/Web

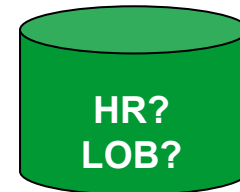
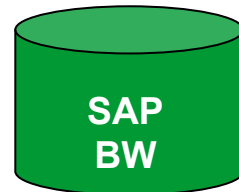
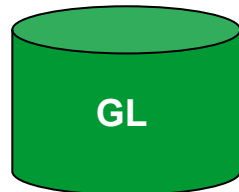
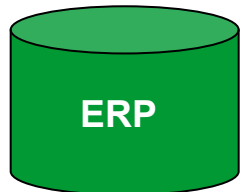
TM1 Web



Server Layer – Windows 32 & 64bit, HP, Solaris, AIX



Source  
Systems



Microsoft Excel - TM13.xls

File Edit View Insert Format Tools Data Analyst Contributor Window TM1 Help

Type a question for help

C45 2110 Cleaning-bins

IBM Cognos software

Outlet	All outlets	New Product	New Bike
Scenario	Actual	Parent	All Terrain
Year	2008	Add Product	

	Jan	Feb	Mar	Q1	Apr	May	Jun	Q2	Jul	Aug	Sep	Q3	Oct	Nov
Qty	417	366	264	1,047	213	246	498	957	417	366	264	1,047	213	246
Revenue	228,000	199,800	143,700	571,500	115,500	133,950	273,450	522,900	237,855	208,440	149,910	596,205	120,495	139,700
Cost of Sales	78,810	313,410	63,390	73,470	154,434	291,294	128,808	112,920	81,204	322,932	65,316	75,700	16,725	65,430
Net Income	88,612	368,599	98,482	102,192	-121,237	79,437	204,714	66,208	62,430	333,351	107,966	105,200	85,776	339,945

Stacked Dimensions

Drillable Rows

Level Based Formatting

Action Button to run processes

On Spreadsheet Calculations

Data from multiple cubes

Drill to Relational Source