



Empower and Equip Decision Makers Across Your Organisation with IBM Cognos 10

JT Toro and Malcolm Hawes
November 2010

Session Agenda

- The changing workforce
- IBM Cognos BI 10.1
 - IBM Cognos for Microsoft Office
 - IBM Cognos Collaboration
 - IBM Cognos Mashup Services
 - IBM Cognos Mobile
- Summary
- Questions



Cognos 10: Intelligence Unleashed

Smarter Decisions. Better Results.

Freedom to **Think**

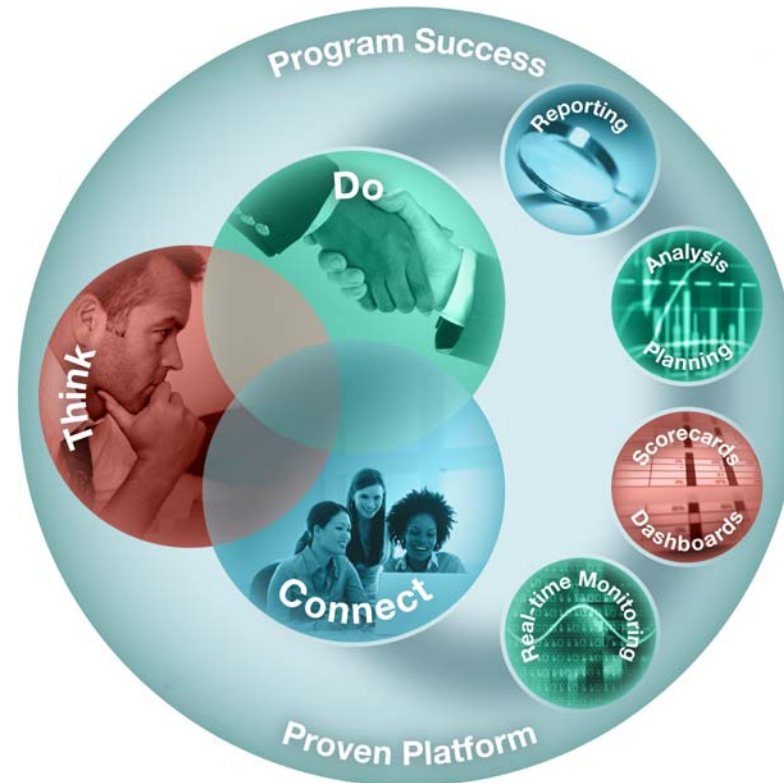
- Unified workspace
- All time horizons
- Progressive interaction

Connect with Others

- Decision networks
- Business context
- Accountability

and Simply **Do**

- Mobile and Disconnected
- Integrated
- Real-time



A revolutionary BI workspace delivered on a proven platform with seamless upgrade.



Business drivers for Microsoft Office integration

Business users are looking to...

Communicate BI content in standard MS Office formats

Communicate and present BI

Provide access to a single, trusted source of secure BI content through a familiar MS Office interface

Trusted content



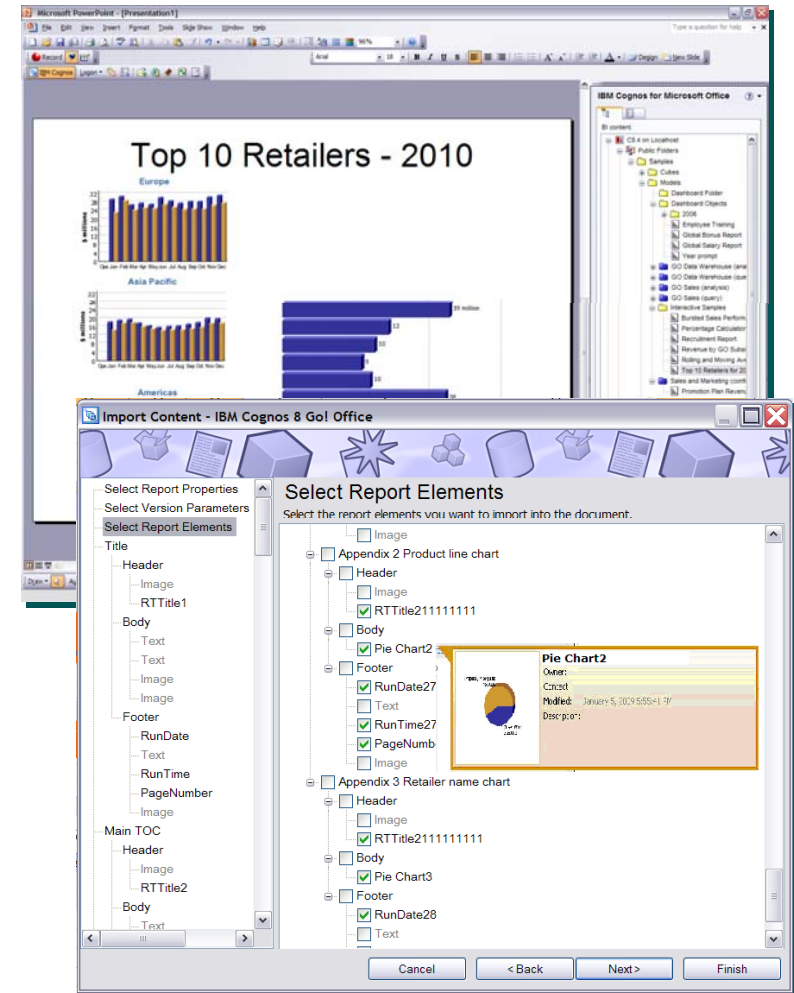
Communicate BI content in standard MS Office formats

Import BI content into MS Office tools and add additional context for Presentations and Briefing books

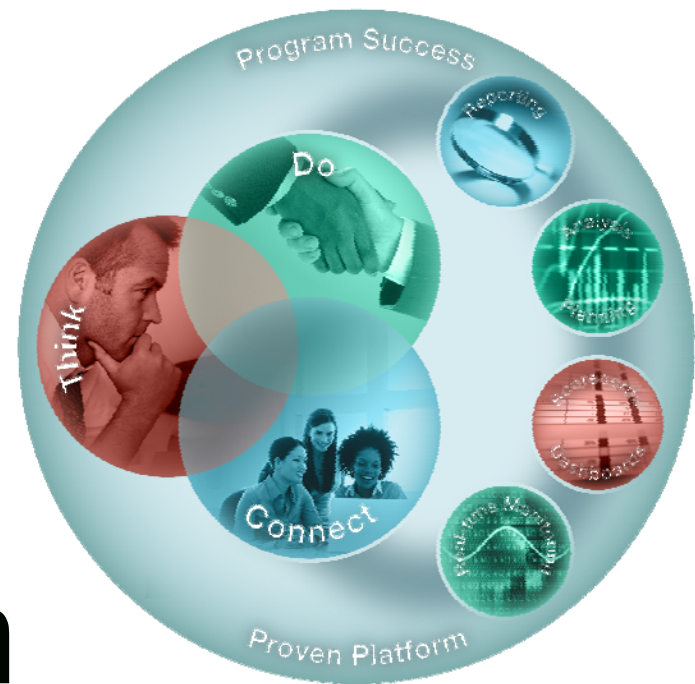
IBM Cognos for Microsoft Office

New Features:

- Support for Office 2007 & 2010
- Ability to import Business Insight dashboards
- Business cards - short, visual summaries of reports, report parts & owner



Demonstration



Business drivers for collaborative BI

Business users are looking to...

Provide Context and reasoning around outliers and trends in Business data

Comments and Annotation

Support working groups and leverage BI as decision support

BI with Collaborative Tools

Provide insight into past decisions and business results

Leverage corporate memory



Collaboration is Everywhere



Just as people expect from their social networks



Business User

“I want to connect and share things with the friends in my life.”



Manager

“I want to be updated on what’s new in my friends’ lives.”



Executive

“I want to look back at old times we’ve enjoyed.”

They also need in their organizations



Business User

“I need to easily connect with people who are relevant to the decisions I make.”



Manager

“I need to better understand the perspectives of my colleagues.”



Executive

“I need to easily access decision history in order to learn, reference and create best-practices.”

Share, Refine and work as a team with BI as decision support

Quickly find the people and expertise you need. Discuss and refine ideas with colleagues, partners, and customers.

IBM Cognos Collaboration

Solution Highlights

- Lotus Connections integration allows a user to:
 - Post messages, share files and links to web content (both BI and external)
 - Create and assign 'To-do' items
- Links directly to a Business Insight dashboard with ability to drive 'Activities' or requests for action
- Send email notifications directly from the Activity



Sales Dashboard* - IBM Cognos Business Insight - Mozilla Firefox

http://vclassbase.ent.ad.cognos.com/ibmcognos/cgi-bin/cognos.cgi?b_action=icd&pathinfo=%2Fmain&ui.action=edit&src=%2Fibmcognos%2Fcgi-bin%2Fibmcognos.cgi%2Ffid%2Ffeeds%2Fcm%2Ffid

Layout and Style Insert Sales Dashboard* Search

Gross margin

Product line

- Camping Equipment
- Golf Equipment
- Mountaineering Equip...
- Outdoor Protection
- Personal Accessories

Number of Sales Representative

Organization name

Year

- 2004
- 2005
- 2006
- 2007

| Revenue | Sales visit | | | |
|--------------------------|----------------|------|------------------|------------------|
| Camping Equipment | 168,611,961.87 | | | |
| Mountaineering Equipment | 44,616,626.64 | 1.2% | 315,602,190.05 | 360,216,016.69 |
| Personal Accessories | 47,695,442.45 | 3% | 1,692,236,173.44 | 1,739,931,615.89 |

Frank Bretton
Nov 1, 2010 3:26:12 PM
Sales visit - created new activity: 'Sales visit revenue' for further investigation

Tasks/Notifications Inbox

[My Inbox](#)

[Investigate Margin Improvements](#) 2010-10-20
We need to start moving some of our promotion for our best selling Product Ranges to increase margin growth

[Investigate new excel analysis](#) 2010-11-01

Dashboard Activities

- Sales visit revenue**
updated by Frank Bretton Today 8:25 PM [More](#)
- Sales Rep Recruitment Drive - Southern Europe**
updated by Frank Bretton 26 Oct 2010 | Due 31 Dec 2010 [More](#)
- Americas Revenue**
updated by Frank Bretton 26 Oct 2010 | Due 31 Dec 2010 [More](#)
- Gross Margin improvement requirements** [More](#)

Done

Enhanced Event Management

Watch Rules, Approvals and Notifications feed into *My Inbox*

The screenshot shows the configuration interface for IBM Cognos Event Studio. It features several sections for configuring events and notifications. The 'Specify the approval request to assign' section includes fields for 'Potential owners', 'Stakeholders', 'Subject', and 'Body'. The 'Specify the notification to send' section includes fields for 'Alert type', 'Alerts', and 'Details'. The 'My Inbox' widget displays a list of events with columns for 'Subject', 'Owner', and 'Status'.

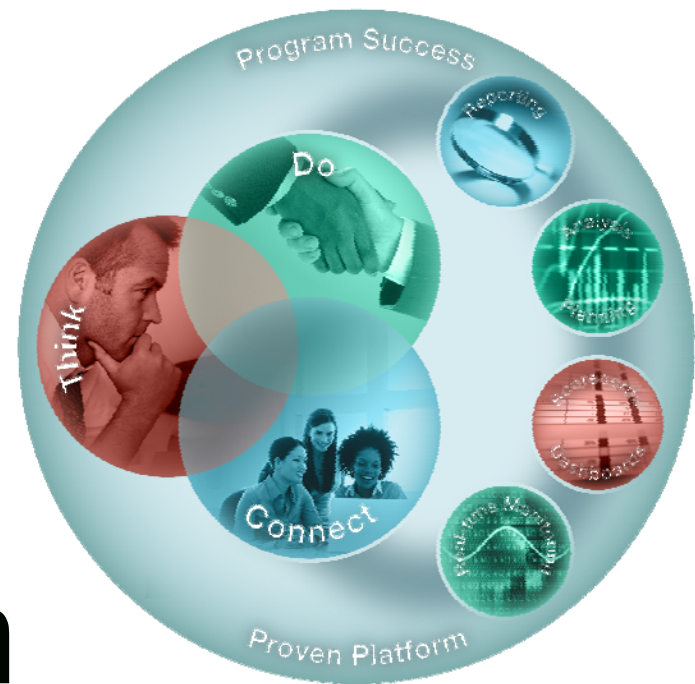
| Subject | Owner | Status |
|----------------------|-----------|-----------|
| Approval Request | Anonymous | Completed |
| Notification Request | Anonymous | Read |

Content in *My Inbox* is displayed in a Business Insight widget

The screenshot shows a Business Insight widget displaying content from the 'My Inbox' widget. The widget has a title bar with 'Content' and a search field. The main content area displays a list of events with columns for 'Subject', 'Date', and 'Content'. The 'My Inbox' widget is highlighted in the right-hand 'Tools' panel.

| Subject | Date | Content |
|----------------------|------------|--|
| Notification Request | 2010-05-06 | This represents a Notification Request from within IBM Cognos Event Studio |
| Approval Request | 2010-05-06 | This represents an Approval Request from within IBM Cognos Event Studio |

Demonstration



Business drivers for embedded BI

Business Users/Managers are looking to...

View BI information in the context of their day-to-day processes and applications

Relevant and contextual BI

Combine internal business information with changing market data

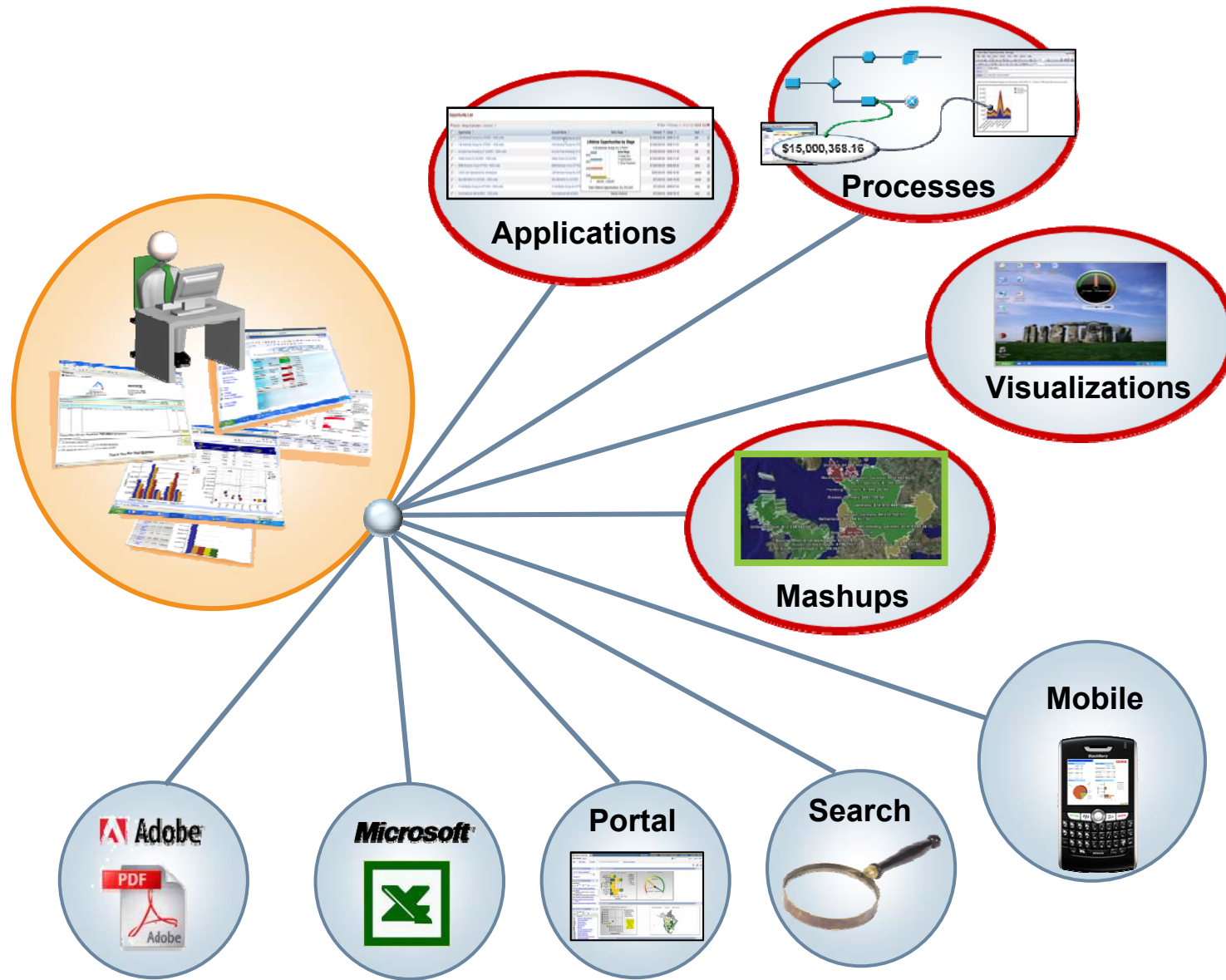
Create situational or “Quick” apps

Reduce Development costs and effort required to embed BI into third party applications, portals and visualization tools

Increased ROI



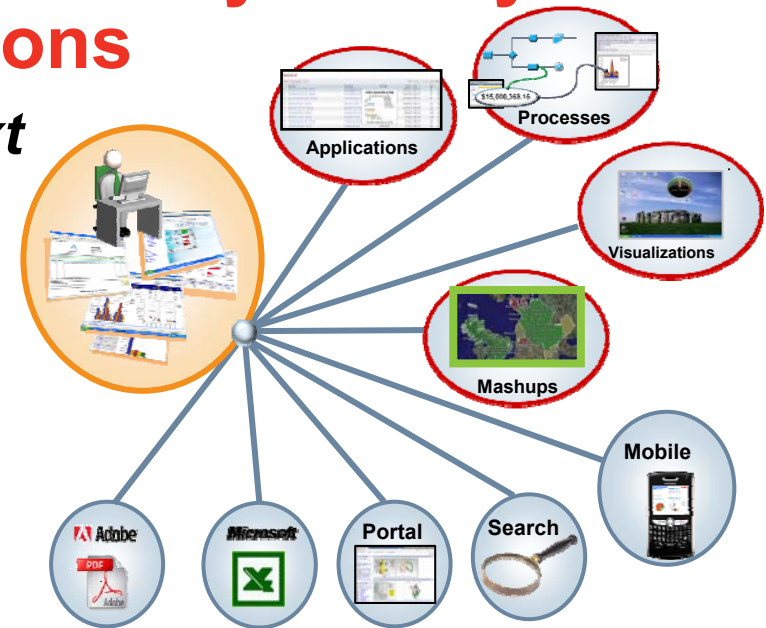
IBM Cognos Mashup Service



View BI information in the context of your day-to-day processes and applications

Provide BI that's relevant to the context of the users daily workflow and/or process

IBM Cognos Mashup Service



Solution Highlights

- API automatically and securely exposes BI content as a Web Service
- Provides Author once, use many times functionality
- Simplifies integration of BI content into applications and portals
- Modern Interfaces (REST, SOAP)
- Flexible Output (XML, LDX, HTML, JSON)

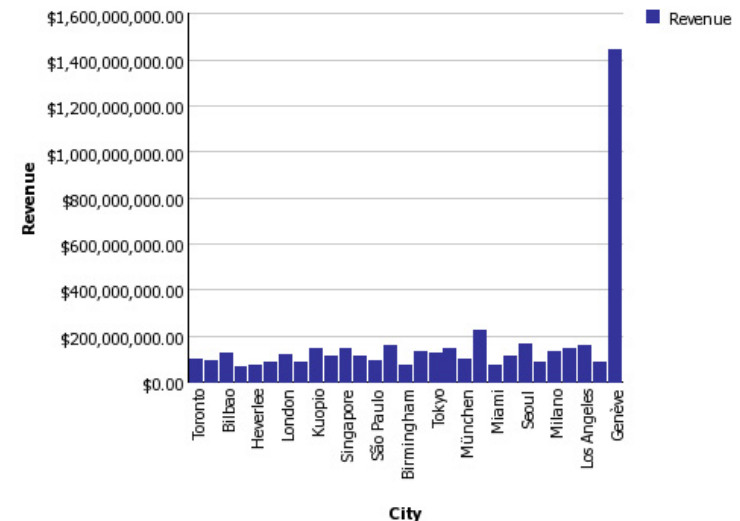
REST Example

The following parameters are used to build the URL for the example:

- Resource type: reportData
- Source type: report
- Resource_id: report store id eg.iE0CDFEF149F8408F96F1C27DCFFA6BCB
- Options: fmt=HTMLFragment, selection=Chart1

<http://localhost/c841/cgi-bin/cognos.cgi/rds/reportData/report/iE0CDFEF149F8408F96F1C27DCFFA6BCB?fmt=HTMLFragment&selection=Chart1>

=



A few more examples

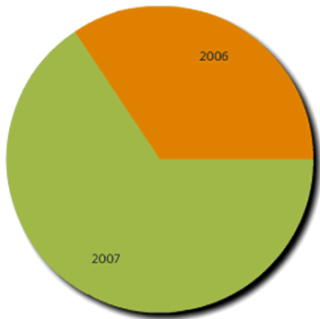
Sales Manager Desktop

Sales Manager Deskop Report Quick Views

Alert List

| Alert | Sales Stage | Account |
|------------------------|----------------------|-----------------------------|
| LOST DEAL | Closed Lost | Lexington Shores Corp 65218 |
| Need Discount Approval | Proposal/Price Quote | A B Hammer Group Inc 27559 |
| Review Proposal | Proposal/Price Quote | Doggie Diner Co Ltd 716488 |

Key Information Sales History



Actions

Account: AB Hammer Group Disc. Pct. 25%

Amount: 1,000,000.00

Pie Bar Pie Reject

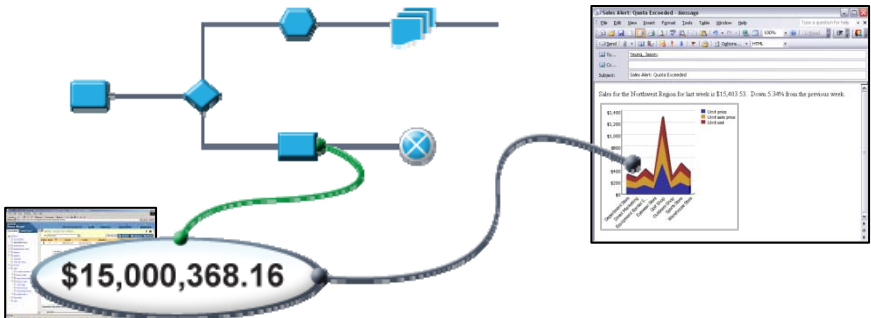
- Desktop SFA or CRM Widget: Push alerts with report content

789 Yonge Street, Toronto, Canada

| Revenue | 2006 | 2007 | 2004 | 2005 | Total(Year) |
|----------------------------|----------------------|----------------------|----------------------|----------------------|-----------------------|
| Mountaineering Equipment | 5,005,853.87 | 4,431,608.45 | | 3,294,952.49 | 12,732,414.81 |
| Personal Accessories | 4,269,188.25 | 3,652,201.73 | 3,121,541.38 | 2,890,138.96 | 13,933,070.32 |
| Outdoor Protection | 327,847.29 | 139,360.38 | 1,236,837.02 | 753,738.62 | 2,457,783.31 |
| Golf Equipment | 6,883,167.12 | 4,945,611.49 | 5,300,111.51 | 5,074,103.74 | 22,202,993.86 |
| Camping Equipment | 15,271,200.73 | 10,777,267.57 | 11,053,360.71 | 12,112,598.14 | 49,214,427.15 |
| Total(Product line) | 31,757,257.26 | 23,946,049.62 | 20,711,850.62 | 24,125,531.95 | 100,540,689.45 |

Jan 12, 2009 12:38:29 PM

The possibilities are endless....



...within BPM solutions?



...as a gadget on the desktop?



...with other visualizations ?

Business drivers for Mobile BI

Business managers are looking to...

Equip front-line workforce with the timely information needed to make **informed decisions**, regardless of location

BI at the point of impact

Fully **Interact** with BI content on mobile devices

Deeper Insights

Provide full Enterprise support for **market leading** mobile platforms

Broad Platform Support

Equip front-line workforce with the timely information needed to make informed decisions, regardless of location

Provide business users with the information they need to make responsive and informed decisions regardless of their location.

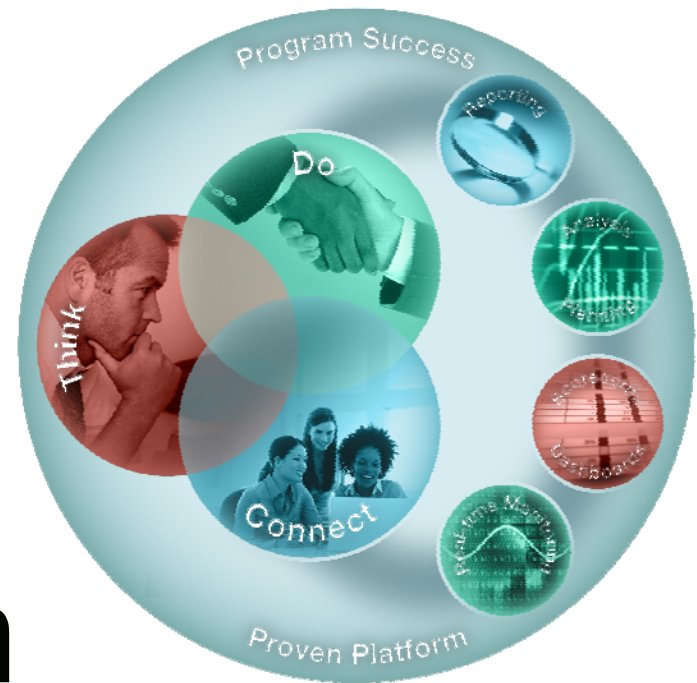
IBM Cognos Mobile

Solution Highlights

- iPhone, iPad, BlackBerry, Windows Mobile, and Symbian
- Zero footprint Web application on iPhone and iPad
- Full BI interactivity including Drill Up/Down/Through using common Touch gestures
- Interact with prompts, drills for additional details, schedule reports for immediate access to key content



Demonstration



Business drivers for extending BI

Better business decisions

Drive company performance through better decisions across levels and job functions

Faster decision cycles

Equip the Business with timely information at point of impact

Relevant BI to more users

Make BI relevant to users, provide in-context to decisions and workflow



Thank You