



Enterprise Content Management

IBM FileNet System Monitor Overview

Steven Bass
Consulting I/T Specialist, FSM SME

This product roadmap is presented as a statement of direction. It is IBM's proprietary and confidential information. It is not intended as a contractually binding representation. Any features presented, dates and releases are subject to change or availability.

Agenda

- **Overview**
- **Capabilities**
- **What's New in FSM 4.0.1?**
- **Customer Success Stories**
- **Demo**
- **Key Sales Contacts, Collateral**

Industry Findings

- **80% of downtime** is caused by applications and/or operator errors

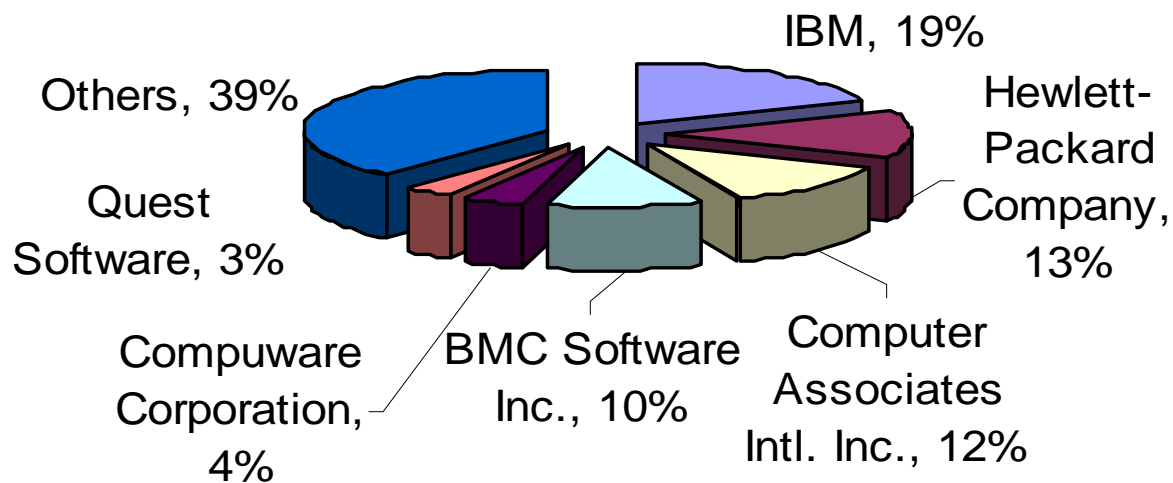
Cost of computer downtime and data loss for businesses by industry per hour:

Energy	
Telecommunications	
Manufacturing	
Financial Institutions	
Information Technology	
Insurance	
Retail	
Pharmaceuticals	
Banking	

*Source: IT Performance Engineering & Measurement Strategies:
Quantifying Performance Loss, META Group, October 2000*

Enterprise System Management Market

2005 Performance & Availability Market Shares



Source: IDC



Enterprise Content Management

Capabilities

Before IBM FileNet System Monitor

- no proactive monitoring of app health status

IBM, **Tivoli**, software



Processes
– up/down



No application health status information
= black box!

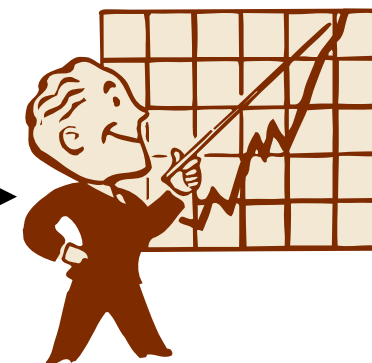


Processes and details –
up/down, tablespaces, etc.

IBM FileNet System Monitor Automates Managing Your FileNet Systems



FileNet
Server



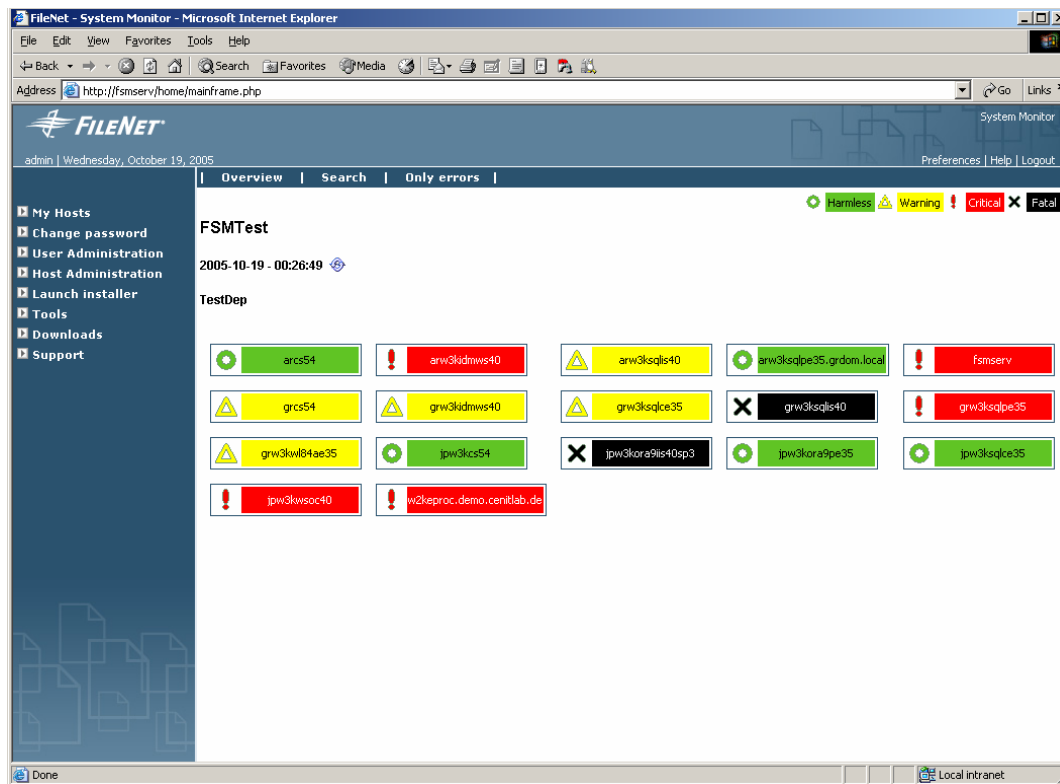
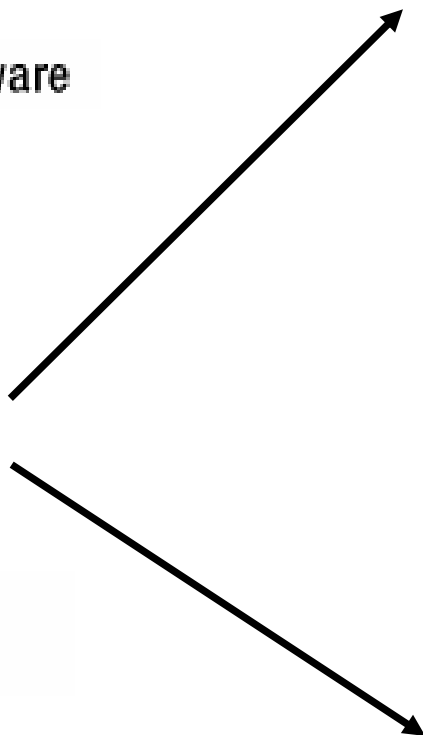
1. Database error prevents document access

2. System Monitor identifies error, alerts Administrator who instantly solves the problem

3. Increased uptime, meeting your SLA

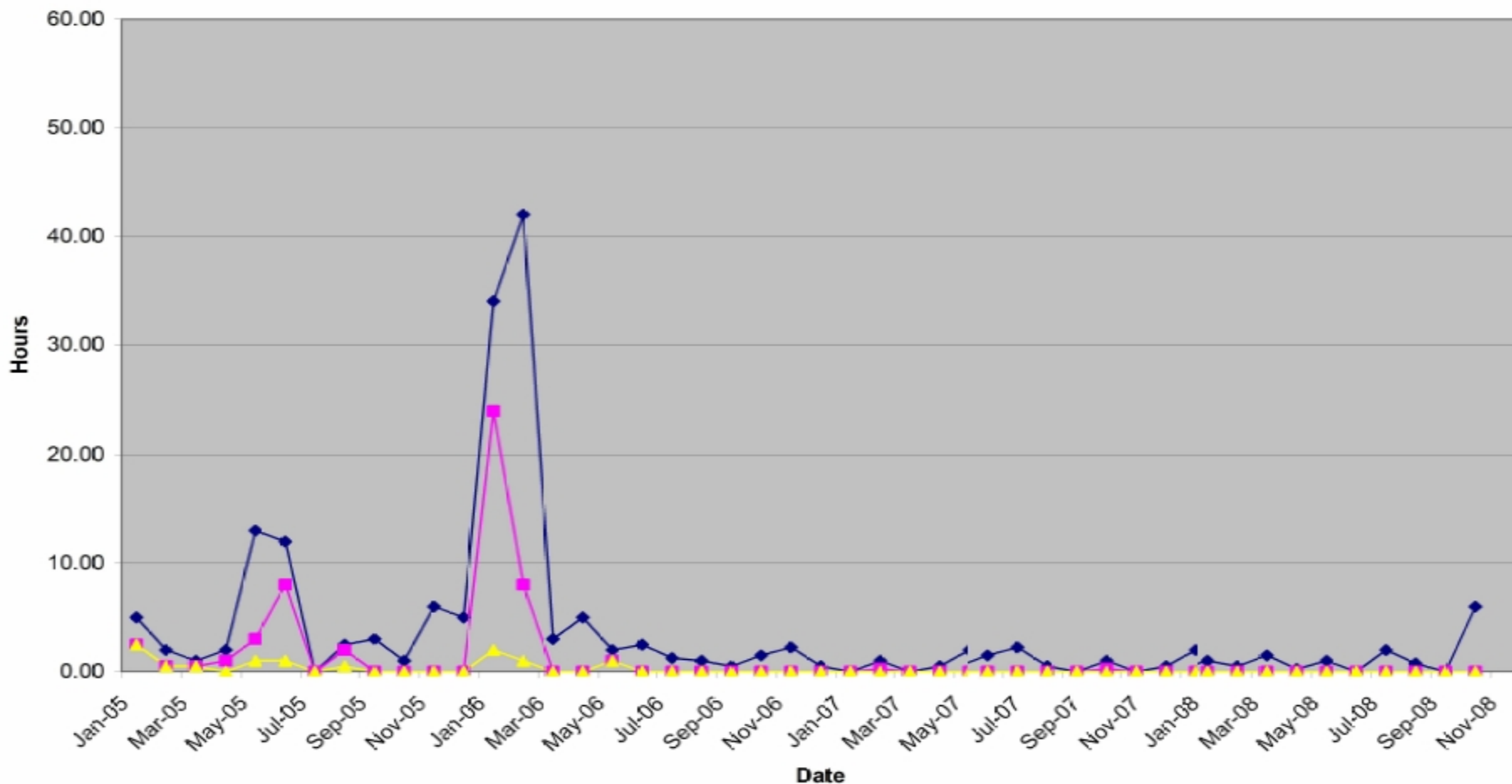
After IBM FileNet System Monitor – Proactive monitoring in a web console

IBM, **Tivoli.** software

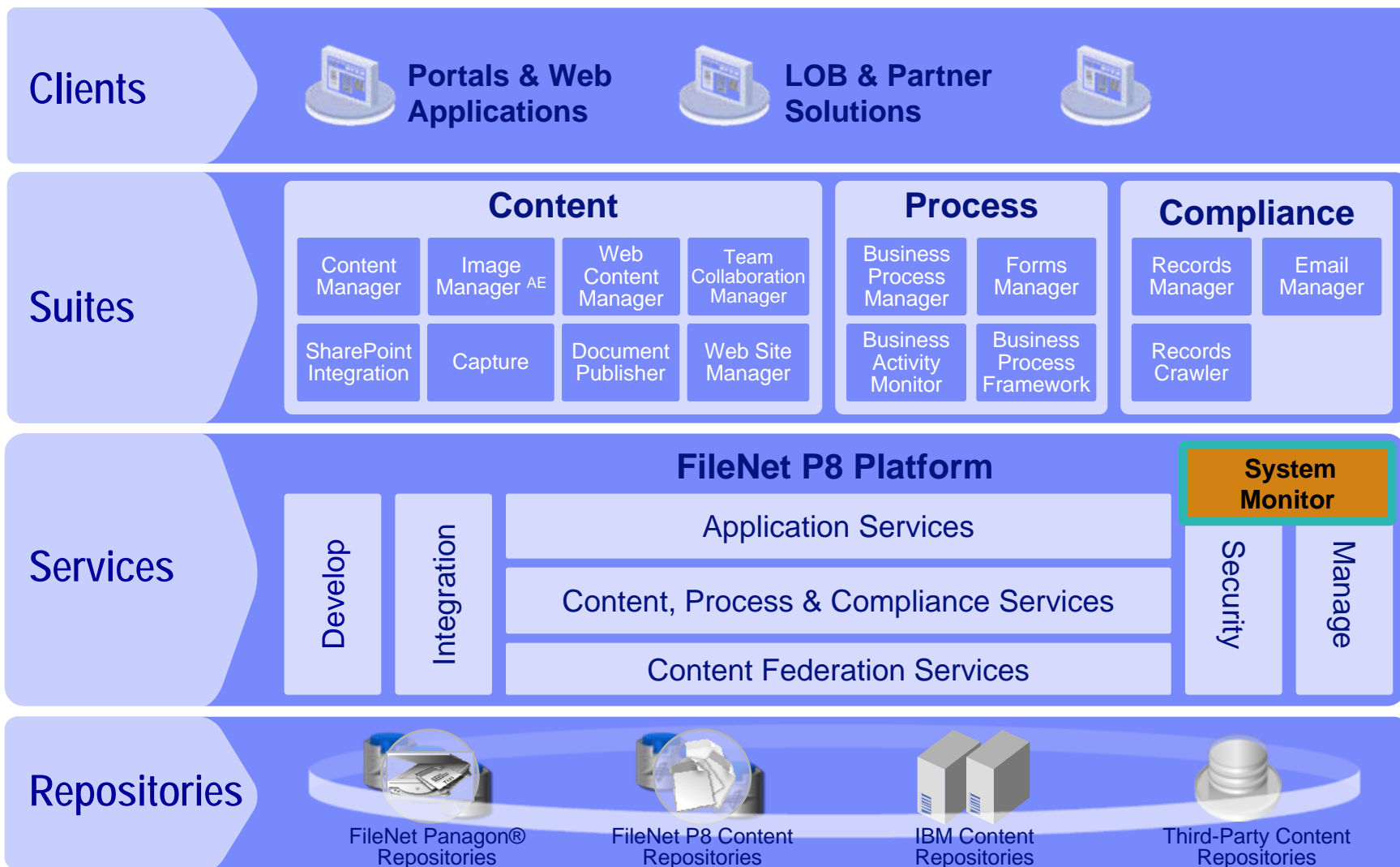


Platform Stability before and after FSM Implementation (April 06) – Return on Investment within a few months

FileNet Image and Workflow production impacts by month



IBM FileNet P8



IBM FileNet System Monitor is the Answer to Address These Challenges

Challenge	Benefits
End user knows FileNet application is down before you do	✓ Immediately notifies you before end users do (proactive vs. reactive)
Unable to meet Service Level Agreement (SLA) / uptime requirements	✓ Increases uptime and ability to meet SLA
Trouble diagnosing problems and determining the corrective action to take	✓ Faster time to diagnose problems by providing corrective actions, knowledge base
Data Center / Network Operations unable to remotely monitor FileNet applications	✓ Enables Data Center / Network Operations to remotely monitor FileNet
Unable to increase productivity of FileNet administrators	✓ Increases productivity by automating manual tasks

IBM FileNet System Monitor Capabilities

- Proactive monitoring
 - 1200 performance & system parameters
 - Operator console for defining thresholds
 - Real-time alerts via Blackberry, pager, email, console, SMS
- Real-time monitoring of 28 logfiles
- Real-time system performance
- Automate 85 manual administration tasks
- Seamless integration with enterprise system mgmt. tools
 - Pre-defined SNMP MIB
 - Logfile
- Management reports and knowledge base
 - Analysis of historical events – identifying weak spots
 - Analysis of resource utilization – trending and capacity planning

Customer Deployment

Data Center / Network Operations

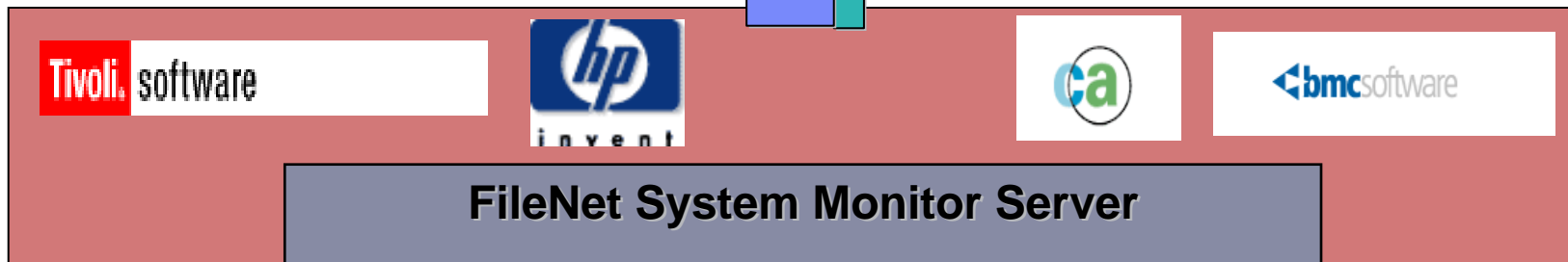


SNMP MIB,
Logfile

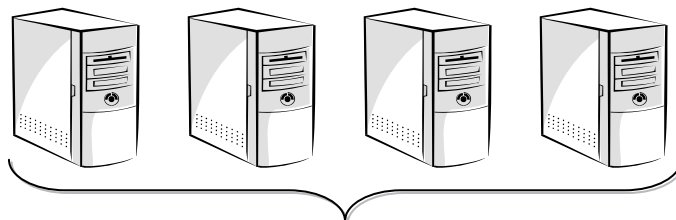
FileNet Administrators



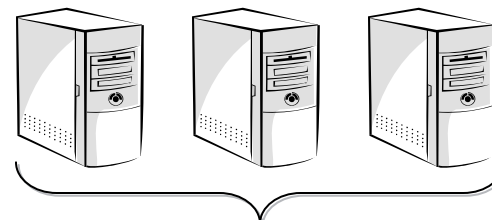
FSM Web Console



Monitored Servers



FileNet Systems



Non-FileNet Systems

Monitors for...

Over 400 Parameters

- **Image Manager Active Edition**

- Image Services
- Oracle / MS SQL-Server
- WorkFlo Services
- Web Services / Open Client
- HP II / MR II (high-volume ingestion)
- Storage (EMC Centera, NetApp Snaplock, MSAR, OSAR)
- Application Connector for SAP
- Logfile management

Monitors for...

Over 60 Parameters

- **Capture / Print / Fax Support**
 - Capture Professional
 - Capture ADR
 - Remote Capture Services
 - FAX
 - Print
- **Content Federation Services for Image Services**
- **Process Analyzer**

Monitors for...

Over 85 Parameters

- **Content Services**
 - Content Services
 - MS SQL-Server / Oracle
 - Verity Search Engine
 - Web Services / Open Client
 - Logfile management

Monitors for...

Over 230 Parameters

- **IBM ECM Products**
 - Content Manager
 - Content Manager on Demand
 - IICE
 - CommonStore
 - IBM Content Collector
 - Logfile management

Monitors for...

Over 250 Parameters

- Business Process Manager / Content Manager
 - Application Engine
 - Component Integrator
 - Content Federation Services
 - Content Engine
 - Content Engine Cache
 - Object Store Service
 - File Store Service
 - Content Engine Database
 - Process Engine Database
 - PPMs
 - Queues
 - Rosters
 - Routers
 - Logfile Management

Monitors for...

Over 100 Parameters

- **Compliance Suite**
 - Records Crawler
 - Email Manager
 - Records Manager (via JMX)
- **Monitor types available include**
 - Customized DB monitors
 - Specific process and services
 - Log file monitoring

Over 100 Parameters

Monitoring of Third Party Components

- **Generic JMX Monitoring**

- Know what's happening inside your Application Server – including your memory footprint!
- WebLogic, WebSphere, JBoss
- Workplace, Records Manager, Business Activity Monitor

Intelligent Logfile Management | 24+ FileNet Logfiles

Real-time Logfile Monitoring

- Processing of unknown events, classification by FileNet error numbers
- Event information contains original error message, error description from FileNet error catalog, possible error cause and corrective action
- Instructions can be extended by customer
- Filtering and adjustable duplicate recognition
- Self-monitoring

FileNet Logfile Coverage

- ELOG / WAL / ISRA
- HP11 / MR11 / ServerLink
- CS Index and Replication / Verity
- CS Auditlog database entries
- BPM RMI, PPM Trace and Router
- Content Engine
- Process Engine
- Process Analyzer
- Component Integrator
- All FileNet related messages in Windows Eventlog

Task Management | Automate 85+ Manual Tasks

Configuration tasks

- Configure FileNet domain
- Configure module for a FileNet server
- Configure FileNet ELOG logfile adapter
- Setup TEC event server for FileNet
- Setup FileNet logfile adapter filepacks
- Setup event console for FileNet

Administrative tasks

- Starting/stopping of systems, domains
- Starting and viewing of reports and statistics, e.g.:
 - Capacity reporting of databases and cache server
 - Status of services
 - Statistics of roster and queues
 - Statistics for license compliance (how many users, which users, etc.)



Enterprise Content Management

FSM 4.0.1

What's New in FSM 4.0.1?

Shipping now

- **Support for P8 4.5.1 (FileNet Content Manager, BPM, Image Services 4.1.2, CFS for IS, eForms)**
- **64 bit support on Windows 2003, 2008, Linux**
- **Database support for DB2 9.7, SQL Server 2008**
- **Support for CM 8.4.2, CMOD 8.4.1, CommonStore and IICE**
- **Website monitoring with user/password input including https**
- **Websphere 7.0, JBoss5, BEA Weblogic 10 support**
- **Linux 64 bit FSM Server - Intel**
- **New Java Bean and FileNet Listener Browser**

Product Roadmap

- **Oracle 10 as local FSM Database**
- **Symphony Support (IBM Content Collector 2.1)**
- **Updated GUI**
- **IBM LAP (License Acceptance Process) installer support**



Enterprise Content Management

Customer Success

Over 75 Customers Worldwide...



Challenges | SunTrust



- Negative end-user perception of system stability
- Business users notified FileNet administrators of system outages
- Dependency on custom monitor scripts
- Administrators in a reactive mode, continually firefighting platform issues
- Time consuming manual system checks
- There was no audit trace of system outages or problem resolution documentation
- Remote connections to distributed servers were time consuming

System Monitor Benefits | SunTrust



- **Higher availability**
 - Administrators immediately notified of warnings and critical errors via SMS
- **Leverage existing CA Unicenter Monitoring infrastructure**
 - Real time dashboard view of servers for IT and business users
 - Automatic trouble ticket creation for critical and fatal events
- **Provided reports and statistics for SLA governance**

System Monitor Benefits | SunTrust



- **Remote Task Execution eliminated need for remote logon to distributed servers**
- **Single administrative portal to FileNet platform streamlined administrative work effort**
- **FSM Console provided “at a glance” System availability assurance**
- **Help Desk tickets reduced by 65%+**

System Monitor Benefits | SunTrust



- **Optimize system performance by identification of system bottlenecks**
- **Higher productivity for FileNet Admins – ability to focus on new development activities**
- **Eliminated throughput bottlenecks**
- **Business users embrace enterprise content management technology**
- **Eliminated dependency on custom scripts**
- **Provided an customer extensible knowledge base for problem resolution documentation**

Summary

- **Unsurpassed monitoring coverage for IBM FileNet P8**
- **Support for other IBM ECM products such as IBM Content Manager, Content Manager On Demand, ICE, and CommonStore**
- **Easily monitor non-FileNet products**
- **Seamless integration with existing System Mgmt. tools**
- **Deployed successfully by many companies worldwide**



Enterprise Content Management

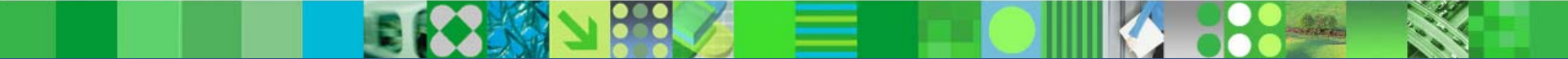
Key Sales Contacts & Collateral

Collateral

- **Datasheet**
- **Technical white paper – new JMX Monitoring guide prepared by Steven Bass, FSM SME**
- **Customer link**
 - <http://www-306.ibm.com/software/data/content-management/filenet-system-monitor/>

Contacts

- **North America**
 - Steve Bass, sbass@us.ibm.com
- **Installation Packages and Scheduling**
 - North America: Mike Egan, mike.egan@us.ibm.com
 - Rest of World: Contact local IBM Lab Services Manager
- **IBM ECM Community**
 - Join the Conversation: www.ibm.com/community/ecm



Enterprise Content Management

Thank You