



nsi[™] autostore[®]
for IBM[®] Datacap

Introduce Business Documents into IBM Datacap Faster Than Ever Before

You know it, you need it, and you probably use it every day: the shared office copier. It's the place for copying tantrums (the machine's and yours), and ad-hoc meetings. It's also the place where most of transactional business processes initiate. With NSi AutoStore you can securely extend the power of IBM Datacap to multi-function devices(MFD), deliver a personalized user experience to automate data and document capture at the point of origination and introduce business documents into your workflow faster than ever before.

What Sets NSi AutoStore for IBM Datacap Apart?



Authentication

Since a copier or scanner is typically a shared device, security dictates that only authorized users can access your network applications and resources.

This is done through password or smartcard-based authentication using your existing network security infrastructure (Common Access Cards, Windows, Active Directory, Novell NDS, Lotus Notes, etc.), eliminating the need for extra passwords. After logon, the credentials will be validated and user information is populated. The user name will be shown and a personalized scan menu will appear, giving greater control and security. NSi AutoStore network authentication is seamlessly integrated with the document workflow, to ensure optimal auditing and security of the documents being captured and routed to IBM Datacap.



Restricted Network Access

NSi AutoStore restricts access to network resources using a multifunction device, limiting the ability of anyone gaining access to the device to browse the network or perform activities that cannot be traced

back to an individual. User level and password authentication can be enabled for all scanning functions available to that specific person. NSi AutoStore network authentication is a server-based solution as opposed to device-based authentication which requires extensive point-to-point management from IT. NSi AutoStore's server-based authentication can be managed centrally, lowering total cost of ownership and allowing clustering, failover and other system redundancy techniques.



Personalized Scan Menus

Once the user is authenticated, personalized scan menus appear which are specific to an individual or department. The MFD front panel UI can be enhanced using custom icons and names to accurately represent the workflow action on screen.

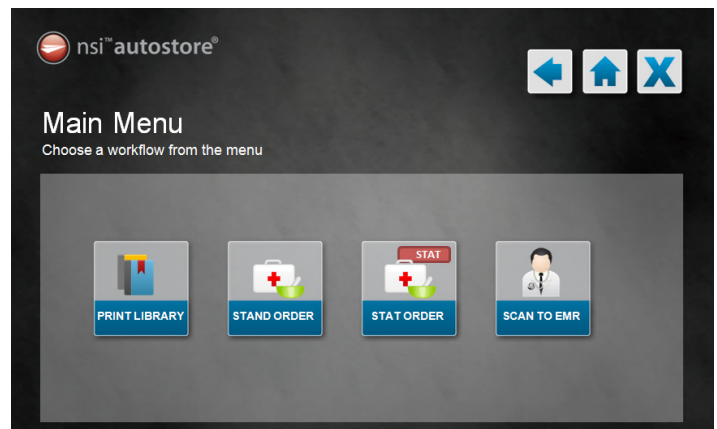
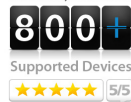


Figure 1 : MFP Front Panel UI : Personalized Scan Menus - Once the user is authenticated, personalized scan menus appear which are specific to an individual or department. The MFP front panel UI can be enhanced using custom icons and names to accurately represent the workflow action.

AutoStore Buyers Lab Review:



Works With All Major MFD Manufacturers

With NSi AutoStore, changing or introducing a new device is as easy as plugging it into the network. You can switch to another networked copier or scanner that best suits your business needs without having to switch to another capture workflow technology and provide users with immediate process and interface consistency gains.



Always Get the Best Scan Settings for the Job

Knowledge workers are often not aware of the optimum scan settings for documents being delivered into business applications. (ex: bar-coded documents). NSi AutoStore enables scan control enhancements by allowing the end user to modify individual scan settings (ex: simplex or duplex scanning) and allowing the network administrator to control the mandatory scan setting settings which can not be changed (ex: Image resolution and color mode).



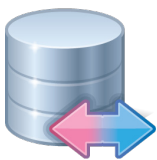
Document Privacy & Document Encryption

NSi AutoStore is in use at government agencies, military institutions, banks, hospitals and other locations where the security of confidential documents is tight and critical. Physical access control, data security, and data encryption practices are very important areas in the MFP capture market. Communications between MFPs, the NSi AutoStore server and destinations can be encrypted to ensure digitized paper documents are only visible to those with proper authorization.



Reduce Exposure of Sensitive Network Information Settings

Many organizations are purchasing add-on features to MFDs to encrypt hard-drives and other documents that pass through the MFD. However the MFD often stores critical settings information on the device such as SMTP gateways, user email addresses, SMB shares and service accounts. With NSi AutoStore, the only setting needed is the NSi AutoStore IP address, thereby eliminating the risk of any confidential information being stored on the device.



Easily Tap into Existing Databases

Easily search and retrieve database information for display on the MFD panel. With the Database Lookup capability, the value entered in one index field triggers a database search to fill the other fields automatically, accelerating the indexing task while delivering greater accuracy.



Reduce the Fleet Management Burden

We all like things to be in order. With NSi AutoStore, you can sort and group your multifunction fleet in defined categories to quickly find and manage document workflows to those defined groups (ex: Accounting, Sales, Marketing, Engineering, etc.). Import IP addresses through a simple *.csv spreadsheet, file to further simplify and reduce device management and setup time.



IBM Datacap Back-end Connector

NSi AutoStore uses a back-end connector to connect seamlessly with IBM Datacap to become an enterprise content management tool that delivers results. Our connectors are free and directly supported and maintained by Notable Solutions Inc.

Example of Personalized Entry Mask on MFP

Workflow Selection Home Screen

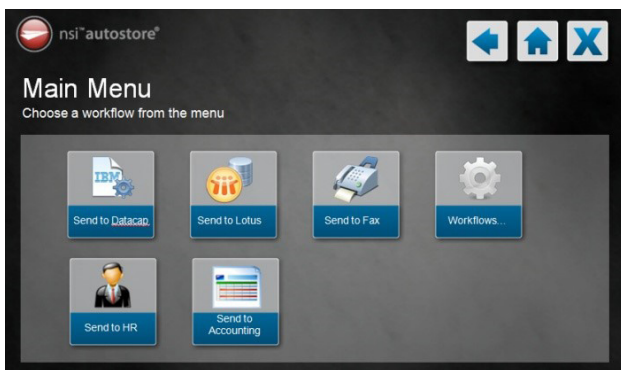


Figure 2 : Personalized Mask on the front panel of a multifunction device

Indexing Pane

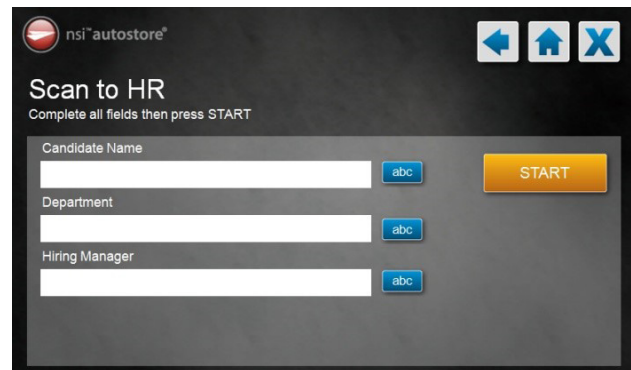


Figure 3 : Document Indexing Pane with DB Lookups