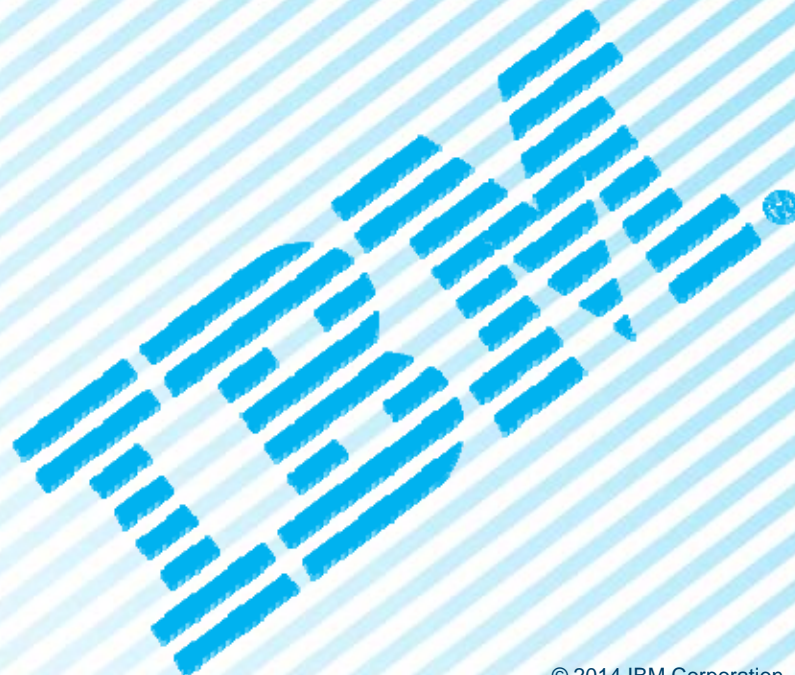


Datacap Demo

Advanced Capture For Enterprise Imaging

February 19, 2014



Your Presenters



David Jenness

Market Segment Manager,
Document Imaging and Capture,
IBM ECM

djenness@us.ibm.com



Dan Ouimet

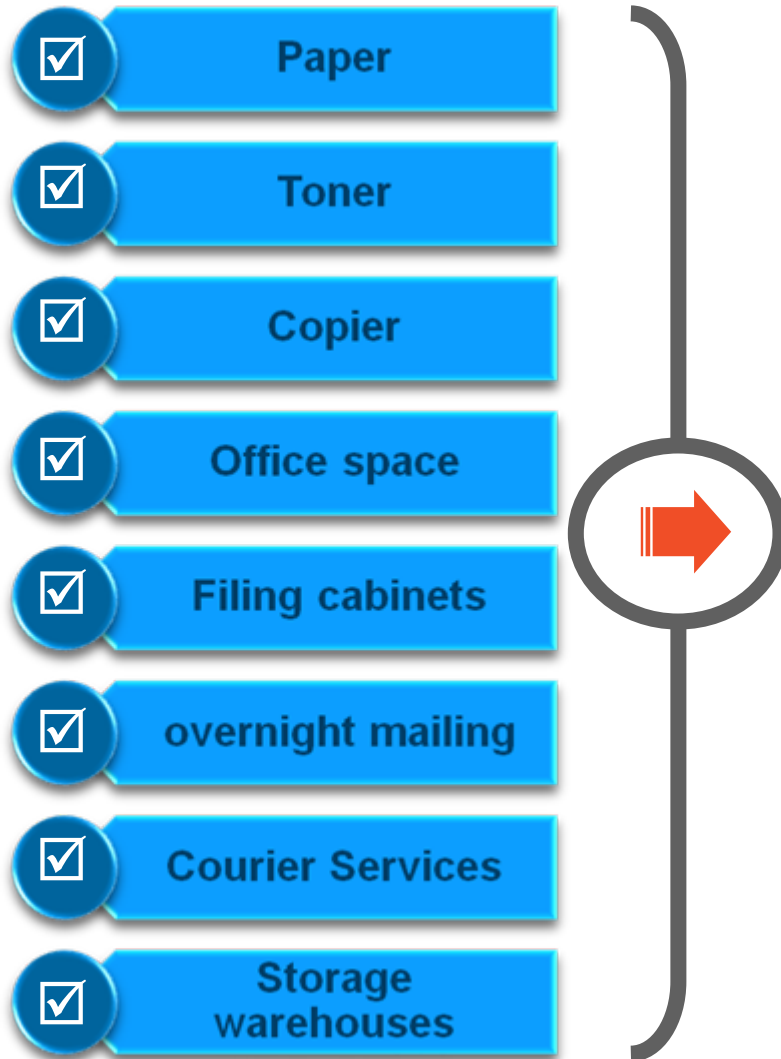
Datacap SME for North
America - Technical SWAT
Team, IBM ECM

douimet@ca.ibm.com

Agenda

- The problem for paper-intensive industries
- New Solutions in Document Capture and Imaging
- Distributed Capture and Branch Automation Benefits
- Key Features of Datacap
- Software Demonstration
- Summary

In US, \$8 Billion spent each year managing paper



Value Proposition for Advanced Document Imaging and Capture

**Reduce paper
and people costs**



**Accelerates
business
processes**

**Business users
control
transactions**

**Faster response to
customers with
more accuracy**

Using Advanced Imaging you can ingest customer documents and expose the content far more quickly than legacy manual processes

What's New About IBM Advanced Document Imaging?

New Tools

New Vision for Customer Experience



Use Case: Distributed Capture / Branch Office Automation

Improve the Customer Experience



Business Challenges

- High cost of branch/regional office operations
- Expensive document courier method
- Poor customer responsiveness

Solution

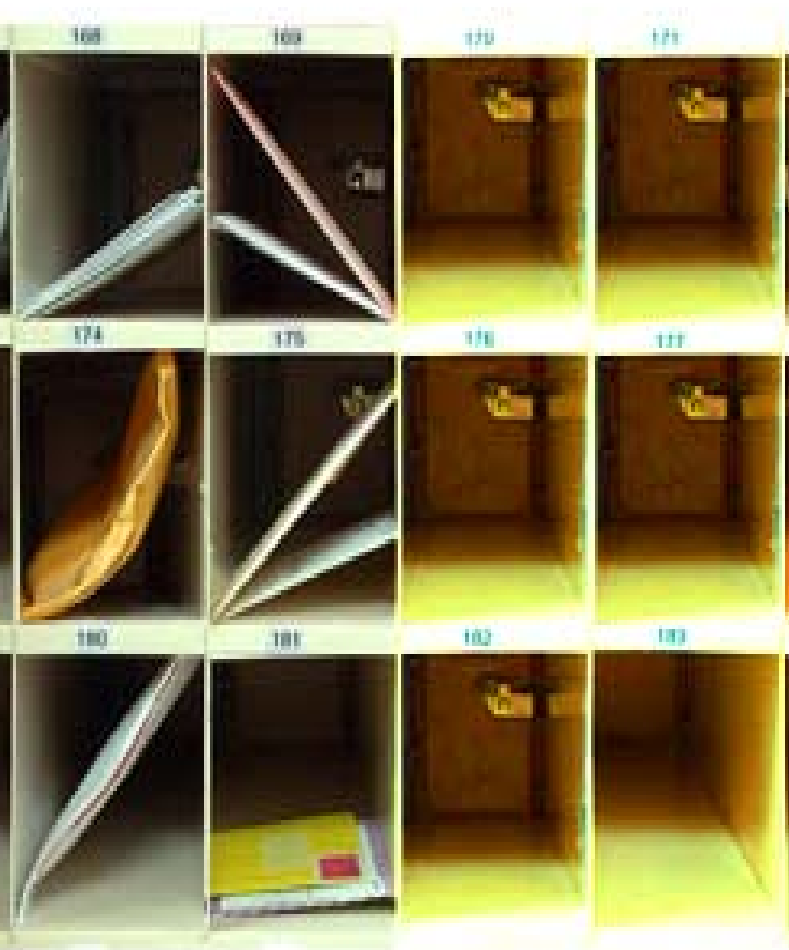
- Integrate document capture into MFPs
- Minimize effort and complexity for branch staff
- Enable Mobile capture
- Automate classification and indexing

Business Outcomes

- Faster, more accurate business process
- Eliminate expensive couriers
- Increase customer engagement
- 100% payback in less than one year

Use Case: Virtual Mailroom

Increase Agility with a Digital Enterprise



Business Challenges

- High cost of paper handling and storage
- Compliance risk for personal/financial data
- Process inefficiencies

Solution

- Multichannel input - paper, fax, email, attachment
- Advanced classification “understands” the document
- Automated data extraction eliminates keying
- Multiple language support
- Knowledge workers have the right documents when needed

Business Outcomes

- Cost savings
- Faster cycle times
- Increased customer responsiveness
- Regulatory compliance

Advanced Document Imaging is a collection of configurable capabilities

Automate the document lifecycle at every step

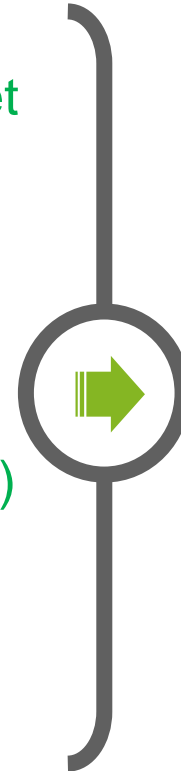


Multichannel input—capture anywhere, anytime

Capture paper, fax, electronic or image



- Mobile capture – phone, tablet
- Desktop scanner
- Emails and attachments
- Network folders
- Multifunction peripheral (MFP)
- Production scanner
- Fax



Capture server



Distributed scanning

Advanced capture is now available at the point of origination

Transactional capture capabilities

- Capture from MFP devices
- Software prompts help guide the process
- Minimal training required
- Security-enhanced encryption and audit trail from scan
- Tight integration between devices and IBM Datacap software
- Support for email and mobile devices



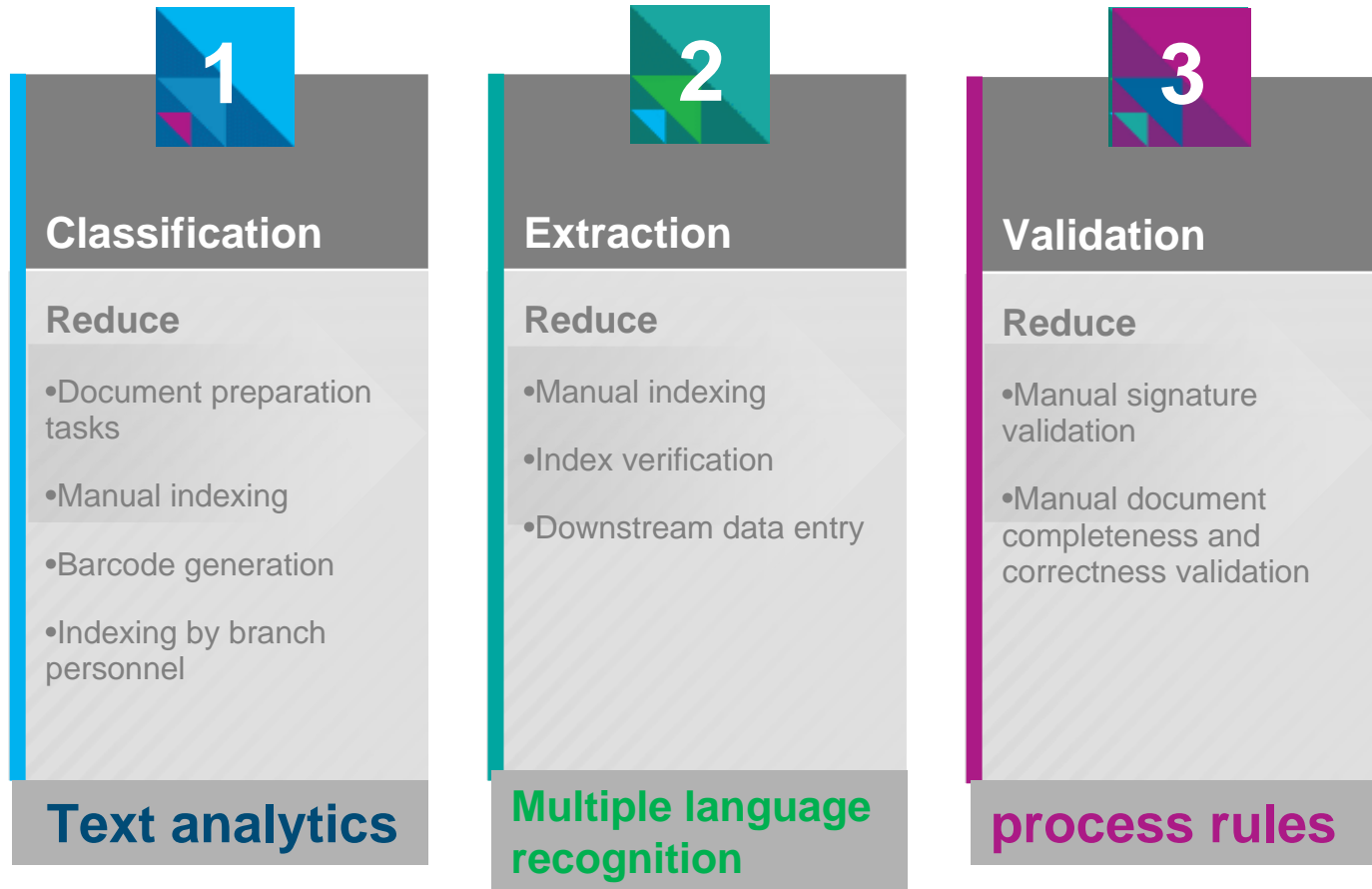
Datacap Mobile Capture

- Use iPhone, iPad, iPod as capture device
- Secure log-in
- Encryption
- Image manipulation to optimize image and remove distortion
- Batch properties
- Secure upload to repository or Business Process



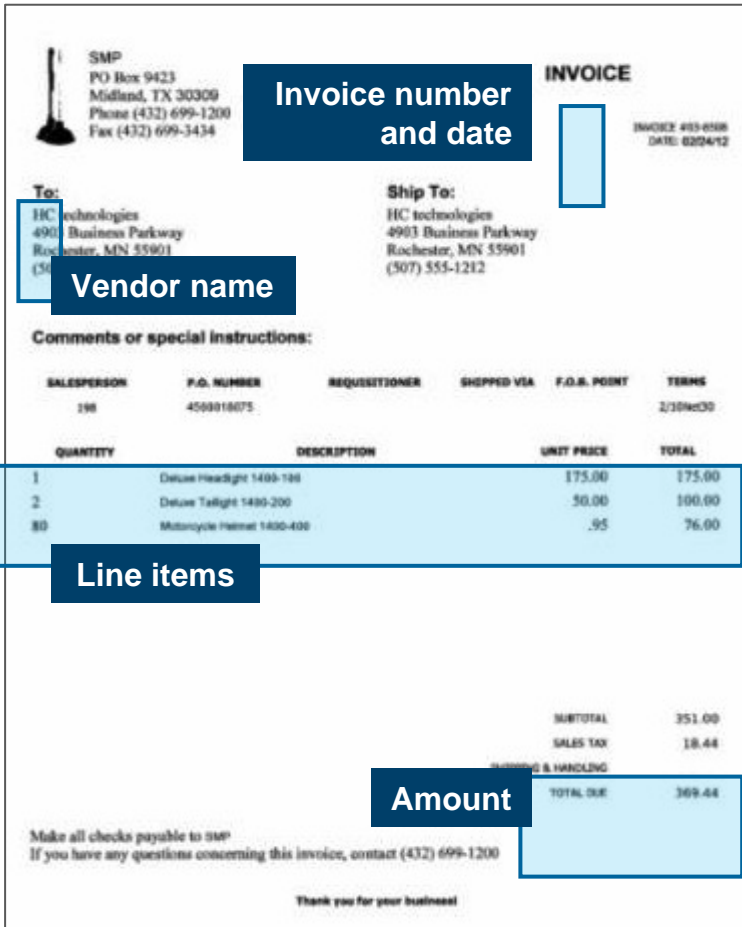
Datacap Capture software offers deep document automation

Scanning is only the first step in business process-enabled imaging



Optical character recognition for data extraction

IBM Datacap software offers multiple recognition engines for better results



- Enterprise resource planning
- Accounting system
- Customer resource management
- Workflow
- Adjudication
- Order processing
- Business intelligence

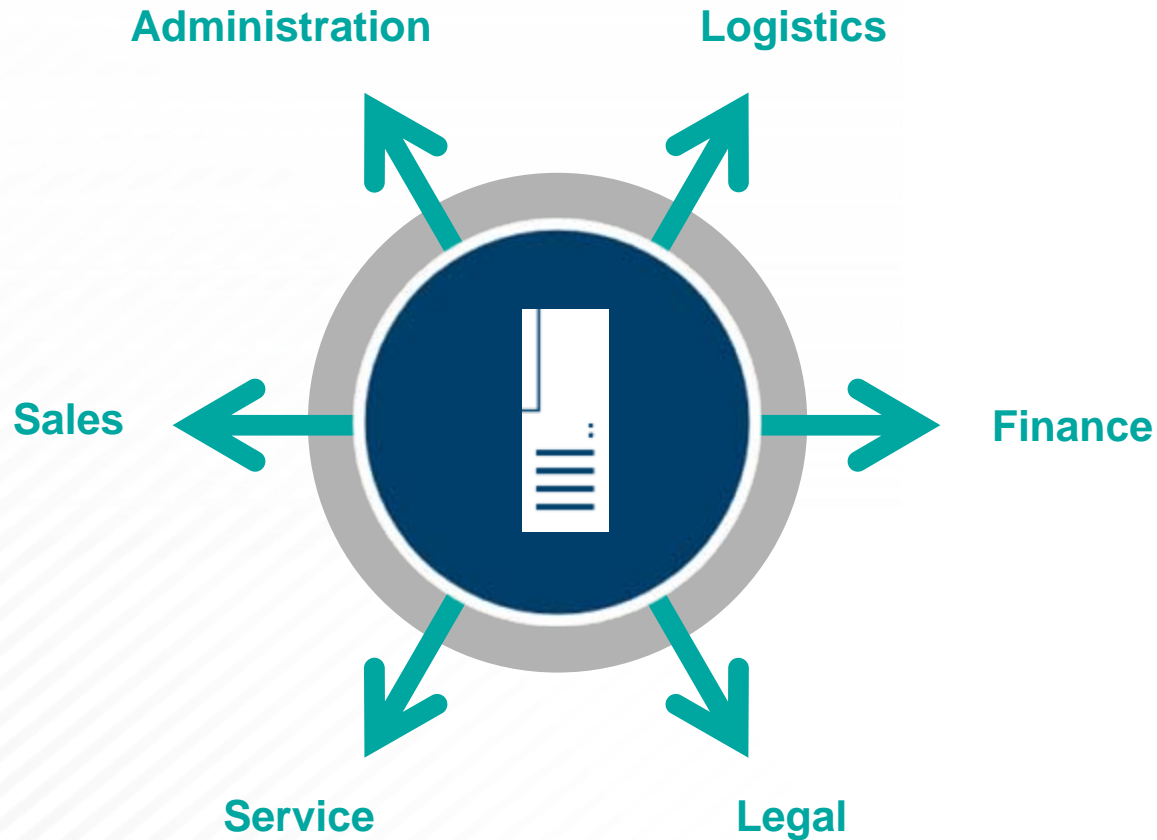
Populate business systems with key data

Index the document image with searchable metadata for ECM




Storage and routing of data and images


Enables line-of-business processes with formatted data and images




Business benefits of Advanced Document Capture solutions



- Deliver products and services to customers faster
- Improve business performance and processes
- Empower frontline personnel with process automation



- Reduce manual data entry, document shipping, paper handling and storage
- Reduce number of workers doing low-value tasks
- Reduce typos and lost documents



- Establish controls for who has access to documents
- Enhance compliance with data privacy laws
- Connect disparate sources of content to the enterprise

Demo



IBM Advanced Document Imaging

Best of breed capabilities for business value in a single purchase



Why IBM for Advanced Document Imaging?

1. 30 years
of successful
imaging solutions
for 1000s of clients
worldwide

**2. Industry's
most complete
Imaging
portfolio**

**3. Multi-
channel input –
scan, email, fax,
MFPs, Mobile**

**4. Single
state-of-the-art
UI platform**

**5. Scalable,
secure, reliable -
24/7 support
worldwide**

**6. World Class
Business
Partner Network**

Thank you.



Trademarks and notes

IBM Corporation 2014

- IBM, the IBM logo, and ibm.com are trademarks or registered trademarks of International Business Machines Corporation in the United States, other countries, or both. If these and other IBM trademarked terms are marked on their first occurrence in this information with the appropriate symbol, these symbols indicate U.S. registered or common law trademarks owned by IBM at the time this information was published. Such trademarks may also be registered or common law trademarks in other countries. A current list of IBM trademarks is available on the Web at “[Copyright and trademark information](#)” at www.ibm.com/legal/copytrade.shtml.
- Microsoft is a trademark of Microsoft Corporation in the United States, other countries, or both.
- Other company, product, and service names may be trademarks or service marks of others.
- References in this publication to IBM products or services do not imply that IBM intends to make them available in all countries in which IBM operates.