

# IBM Datacap Software Demonstration

June 13, 2013

# Your Presenters



**David Jenness**

Market Segment Manager

IBM ECM

[djenness@us.ibm.com](mailto:djenness@us.ibm.com)



**Bob Lastorka**

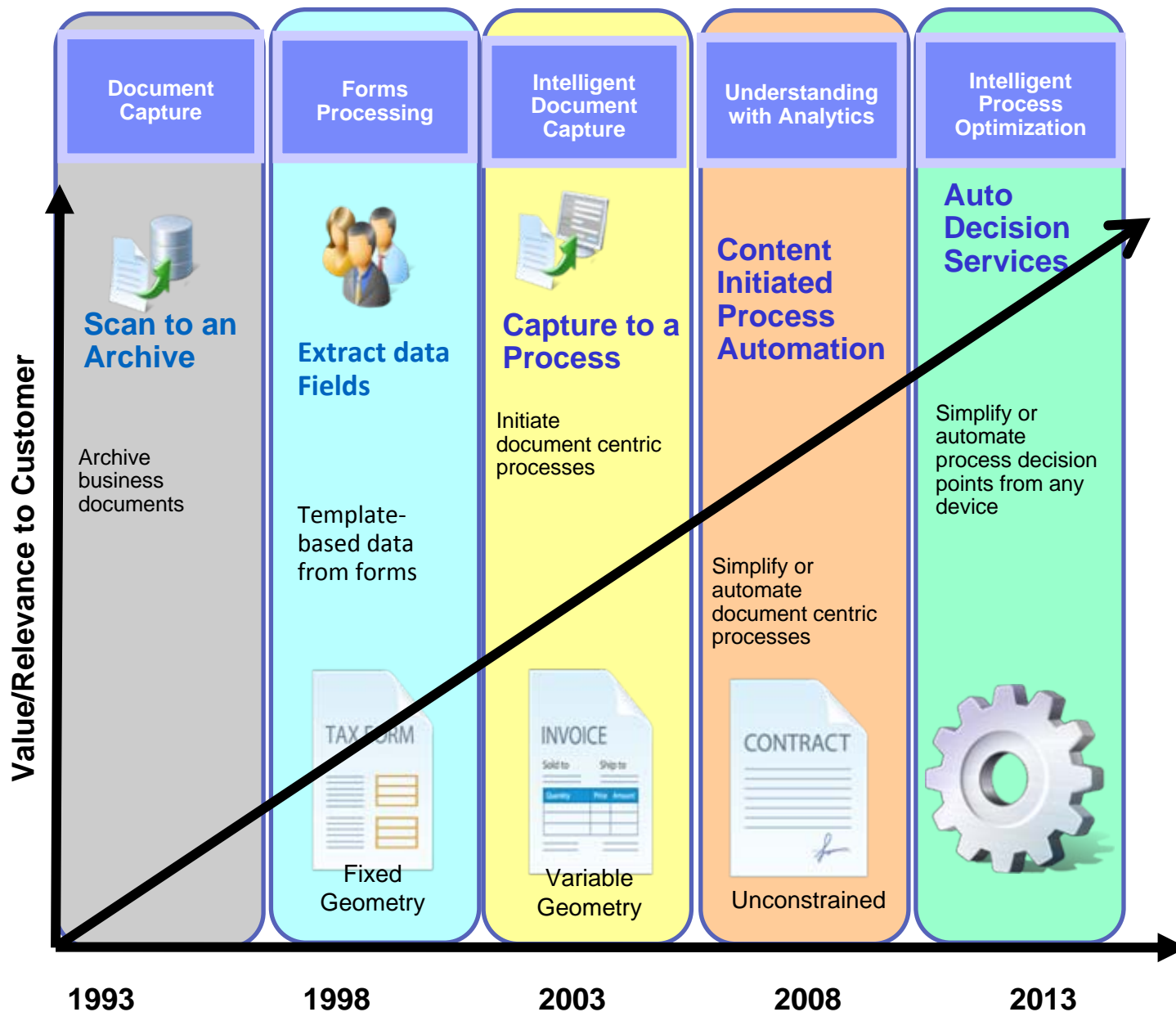
Sales Specialist, Datacap

IBM ECM

[blastork@us.ibm.com](mailto:blastork@us.ibm.com)

# Agenda

- The Evolution of Capture
- 5 Elements of Intelligent Process Automation
- Document Automation in Datacap
- Demonstration 1: Datacap Accounts Payable
- The Value of Capture
- Demonstration #2
- The Product Set
- Questions



**Benefits:**

- Auto input of documents from paper, fax, email
- Auto data entry eliminates keying
- Accelerated processing
- Improved cash management
- Connected processes
- Customer engagement
- Increased competitive-ness
- Shareholder value

## 5 Elements of Intelligent Process Automation

**1.**

Remove Document  
Touchpoints

**2.**

Enhance Usability  
Across The Enterprise

**3.**

Optimize Integration  
With IT

**4.**

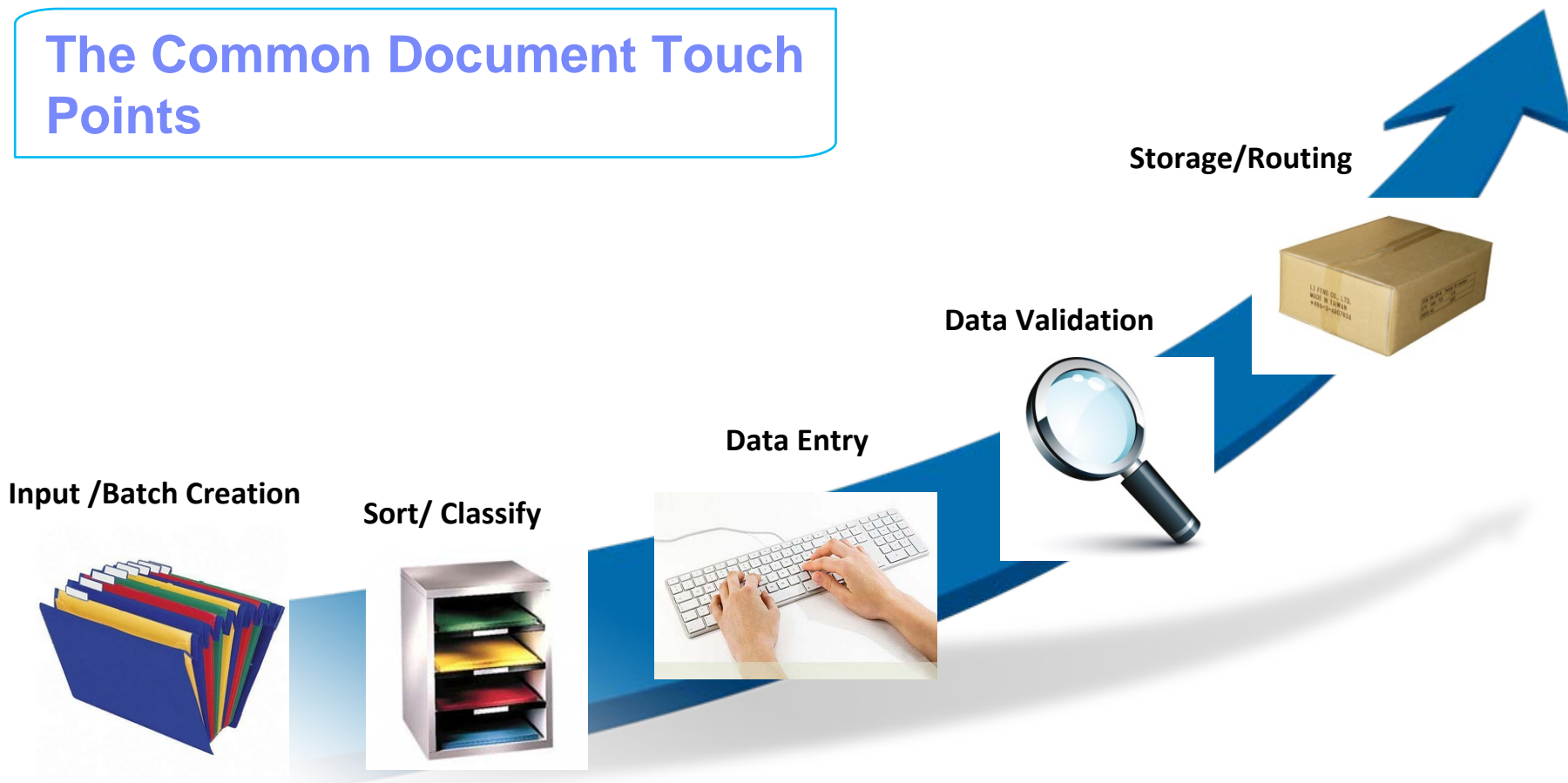
Vertical Accelerators  
With Input From LOB

**5.**

Extensible

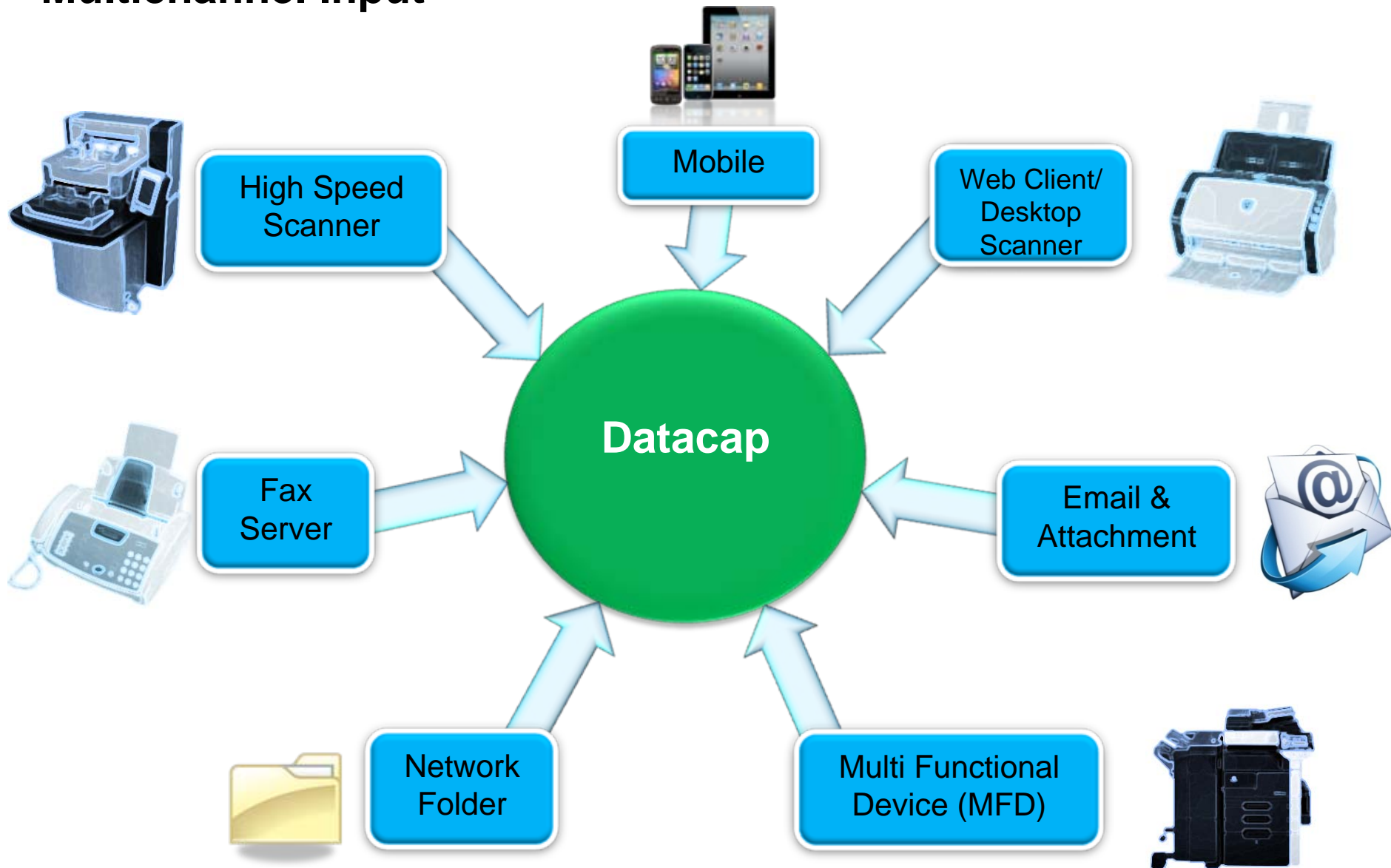
# Capture automates manual processes...

## The Common Document Touch Points

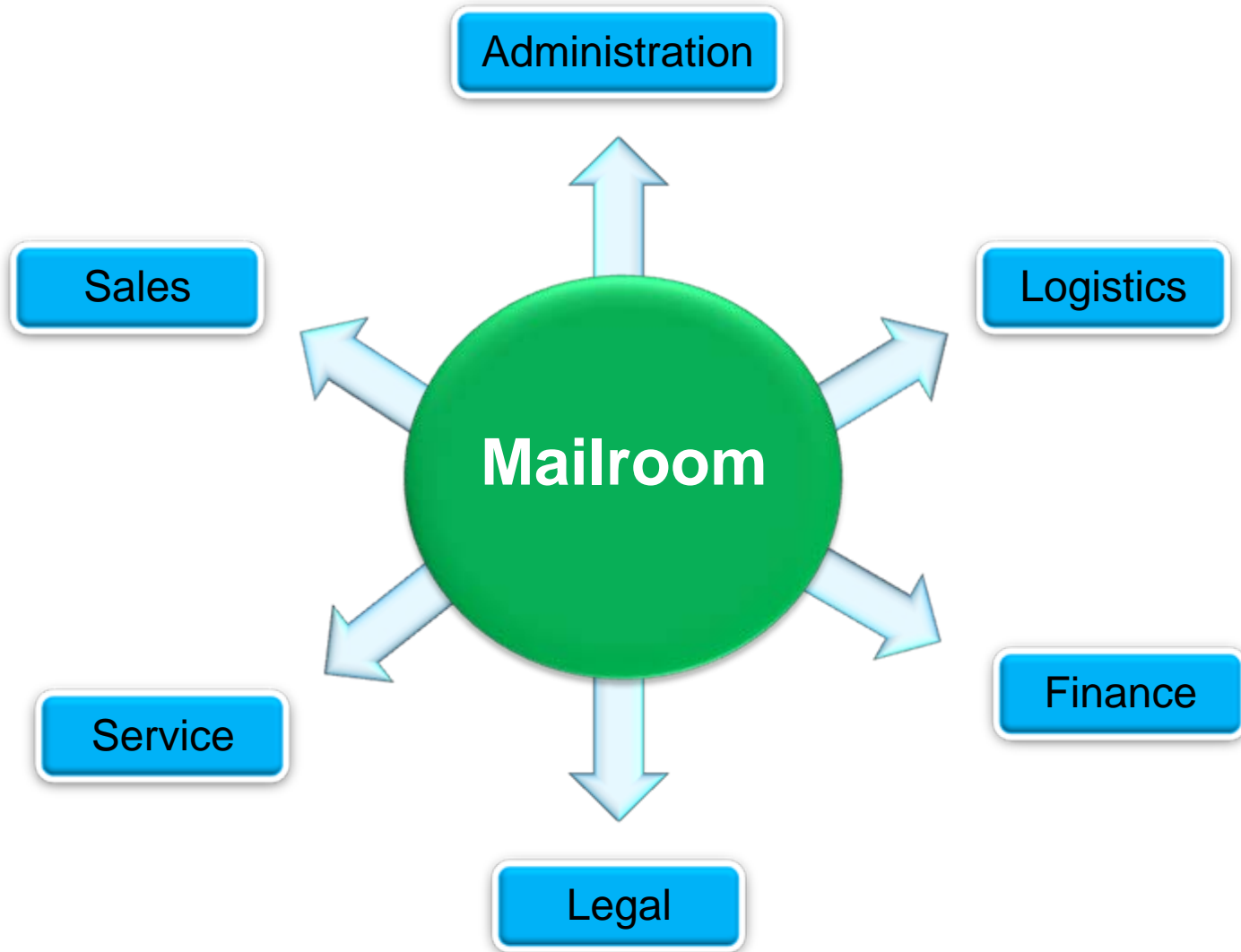


**Today, every one of these steps can be automated**

# Multichannel Input

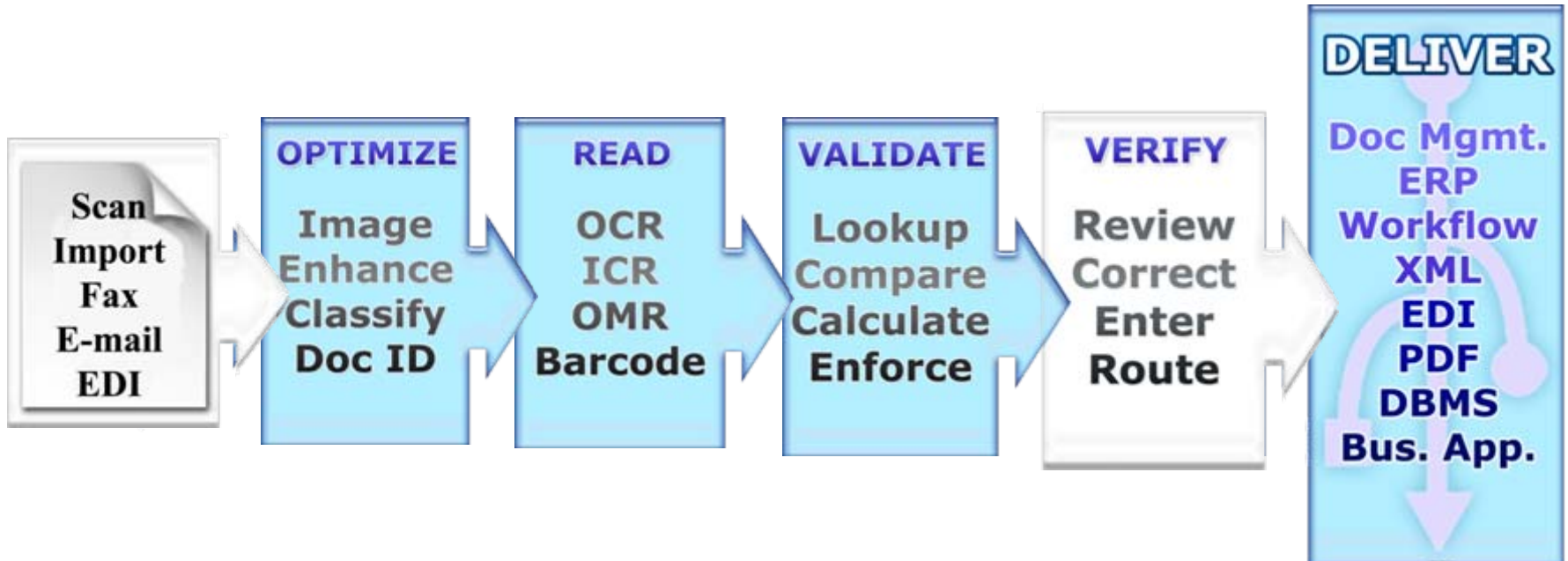


... needs to be delivered to many destinations





# Datacap Capture Process



# Demonstration

# Business Benefits of Intelligent Capture



- **Accelerate document input and process**
  - Deliver products and services to customers faster
- **Eliminate manual data entry**
  - Reduce headcount doing low value tasks
  - Eliminate typos and lost documents
  - **Other cost savings**
    - Eliminate document shipping
    - Eliminate paper handling
    - Eliminate paper storage
  - **Control who has access to documents**
  - Maintain compliance
  - **Connect disparate sources of content to the enterprise**
  - **User-based pricing makes capture licensing more predictable**

# Accounts Payable - 100% Manual Process

## PAPER INVOICING

Labor-intensive and error-prone with too many missed discounts.

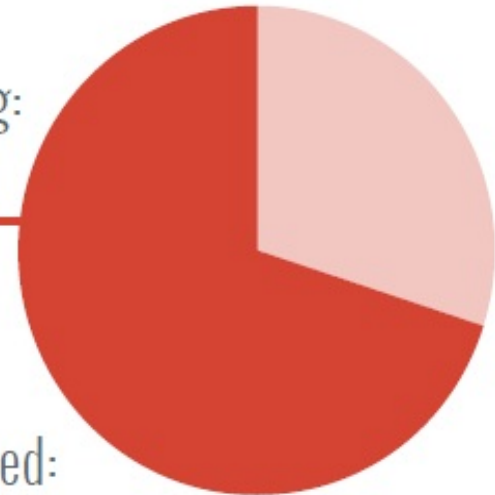
Cycle time: **22 days**



Invoices per FTE: **9,000**



Matching: **70%**



Discounts captured:



# Invoice Reconciliation – Procure to Pay

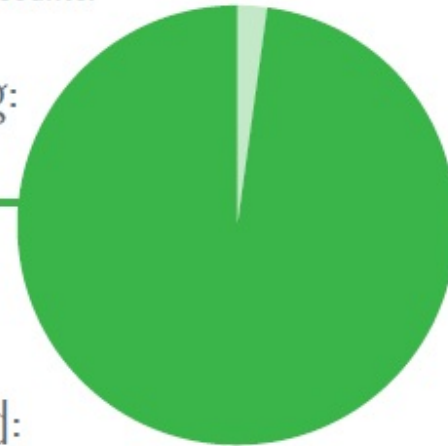
## SMART INVOICE NETWORK

Configurable business rules for invoice validation drive close to 100% touchless processing and double-digit cash returns from all your discounts.

Cycle time: **4 days**



Matching: **98%**



Invoices per FTE: **45,000**



Discounts captured:

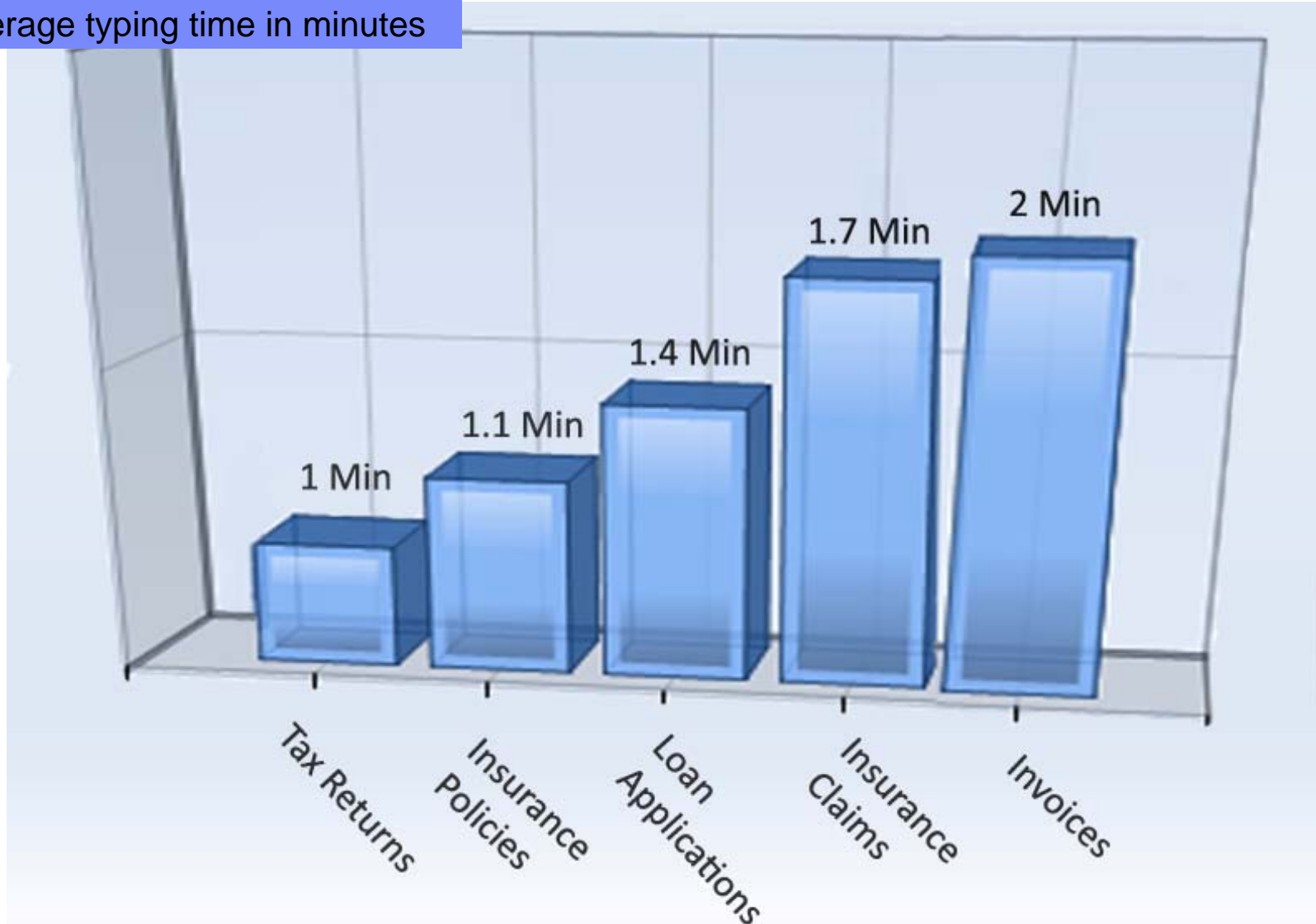
**100%+**



(Enables new, dynamic “sliding scale” discounts)

# Manual Data Entry Time Spent Per Document

Average typing time in minutes



## Example: How To Calculate ROI

### ▪ Key from image

– Fully burdened cost of AP clerk	\$58,000
– Avg # invoices processed by clerk	50,000/year
– Invoices processed annually?	<b>300,000</b>
– Number of FTE AP clerks	<b>6</b>
– Labor cost to process invoices	<b>\$487,200</b>

### ▪ Automated process

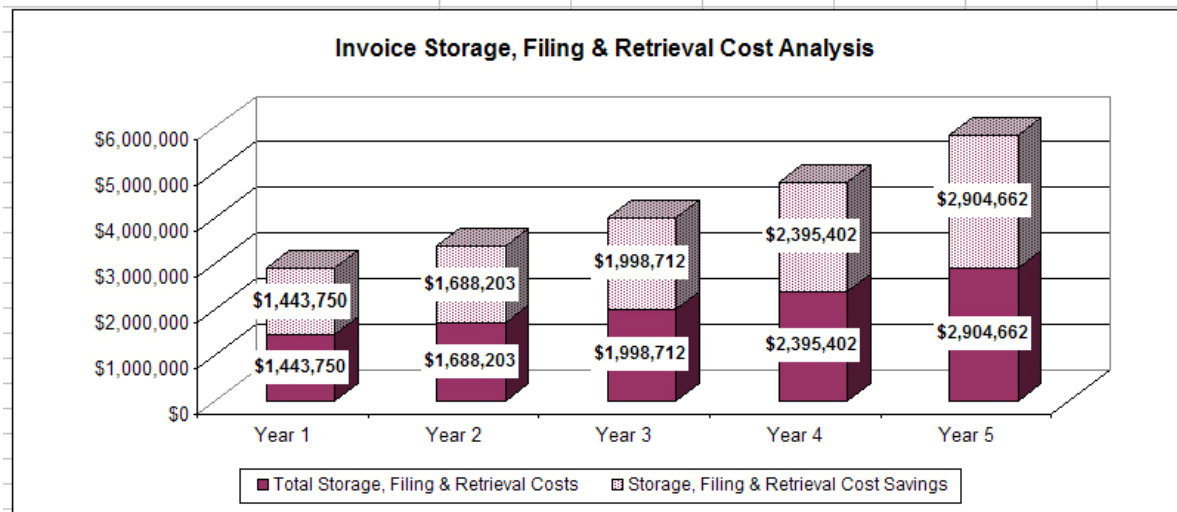
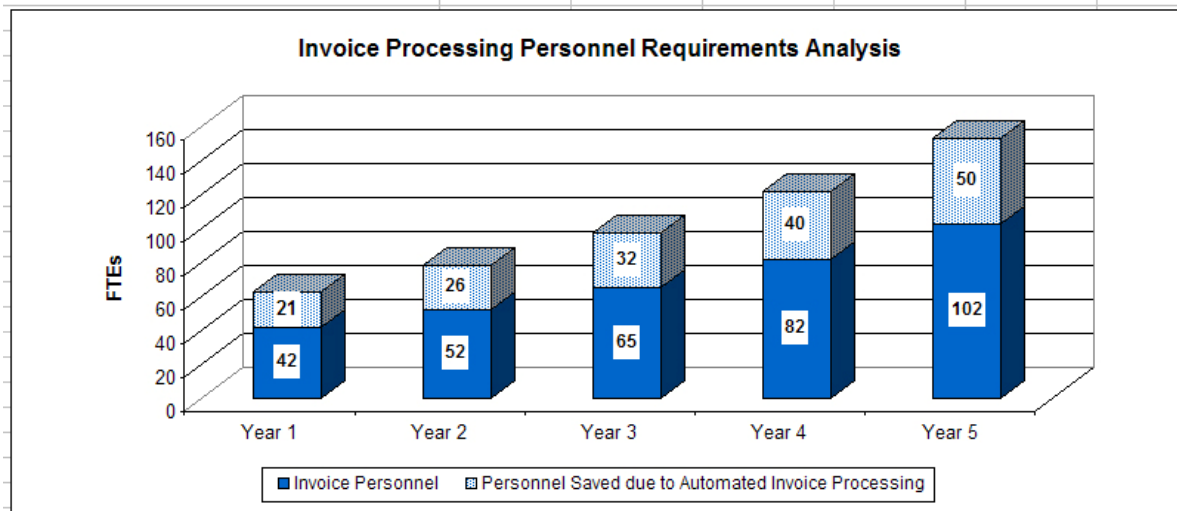
– Fully burdened cost of AP clerk -	\$58,000 (Same as above)
– Avg # invoices processed by clerk -	240,000/year
– Invoices processed annually?	<b>300,000 (Same as above)</b>
– How many AP clerks required? -	<b>2 (1.25 FTEs)</b>
– Labor cost to process invoices -	<b>\$243,600</b>

**Total labor savings:**

**\$243,600**



# Business Value Analysis





## FEDEX STANDARD OVERNIGHT RATES BY SERVICE

All rates are in U.S. dollars.

FedEx® Envelope up to 8 oz.	ZONES												
	2	3	4	5	6	7	8	9 <sup>1</sup>	13	14	15	16	
FedEx® Pak	*	*	*	*	*	*	*	*	*	*	*	*	
Shipments in  or Other Packaging / Maximum Weight in Lbs.	1 lb.	18.80	25.50	34.90	38.70	42.05	44.80	46.05	48.20	29.00	29.00	29.00	29.00
	2 lbs.	20.10	27.00	39.35	42.85	47.45	49.35	51.40	54.15	30.80	30.80	30.80	30.80
	3	21.60	28.60	43.60	47.45	52.60	54.30	56.15	58.65	35.05	35.05	35.05	35.05
	4	23.25	30.50	47.25	52.00	57.45	59.10	61.45	64.50	38.95	38.95	38.95	38.95
	5	23.95	30.95	51.65	56.50	61.30	63.00	65.20	69.40	40.85	40.85	40.85	40.85
	6	25.30	34.80	55.90	60.25	66.40	67.45	70.35	75.30	49.40	49.40	49.40	49.40
	7	25.80	36.30	59.80	65.45	71.10	72.55	75.15	79.80	50.25	50.25	50.25	50.25
	8	27.10	37.35	63.70	69.70	75.90	77.70	79.90	84.20	54.45	54.45	54.45	54.45
	9	28.55	39.00	67.30	74.20	80.60	82.80	85.05	90.05	55.80	55.80	55.80	55.80
	10	28.95	40.50	70.40	78.10	85.35	87.60	90.10	95.35	62.20	62.20	62.20	62.20
	11	30.20	42.30	74.05	82.35	90.10	92.75	95.00	101.15	64.70	64.70	64.70	64.70
	12	31.20	44.40	78.10	86.15	94.50	97.85	100.05	104.95	69.80	69.80	69.80	69.80
	13	31.60	46.65	81.80	90.05	98.35	102.95	104.95	109.90	71.60	71.60	71.60	71.60
	14	32.75	48.40	86.00	93.90	102.15	107.45	110.70	115.70	73.70	73.70	73.70	73.70
	15	34.05	50.10	88.95	97.70	105.95	111.00	114.25	120.20	75.85	75.85	75.85	75.85
	16	34.75	51.30	93.25	101.30	109.45	113.90	117.15	123.25	77.65	77.65	77.65	77.65
	17	36.55	52.25	95.85	104.50	112.00	116.45	119.65	126.05	79.85	79.85	79.85	79.85
	18	37.60	53.60	98.75	106.70	114.45	119.00	122.85	129.10	82.85	82.85	82.85	82.85
	19	38.60	55.10	101.10	108.95	117.10	121.65	126.05	133.75	86.40	86.40	86.40	86.40
	20	39.30	56.70	108.95	118.40	126.70	132.00	136.85	141.75	87.80	87.80	87.80	87.80

1 lb  
Zone 2  
\$18.80

15 lbs  
Zone 7  
\$111.00

20 lbs  
Zone 16  
\$87.80

# Shipping Costs Can Be Staggering



Warehouse / Depot



Headquarters



Branch



Regional Office

**20 lbs of Documents**  
**X 250 days per Year**  
**X 200 locations / branches / agents**  
**= \$4.4 Million Per Year**



Brokers / Agents

# Demonstration

# IBM's Document Imaging and Capture Portfolio



## Entry-level Capture

- IBM Datacap Taskmaster Capture Entry Level
- Easy and fast way to index documents from store them in an ECM system
- Cost-effective solution



## Distributed Capture

- IBM Datacap Taskmaster Capture (Web)
- Document capture in a browser with no software installed on the PC
- Eliminate document shipping to a central office
- Accelerate input



## Intelligent Capture

- IBM Datacap Taskmaster Capture
- Multi-channel Input
- Analytics-based Classification
- Multi-language Recognition
- Multi-channel Output
- Rules architecture/ SOA environment



## Accts Payable Capture

- IBM Datacap Taskmaster Accounts Payable Capture
- Capture invoice data without manual data entry
- Set up invoices on the fly
- Line Item Extraction and Matching to PO

Single product

# IBM's Document Imaging and Capture Portfolio



## Production Imaging

- **IBM Production Imaging Edition**
- Comprehensive product for managing the entire document imaging lifecycle
- Capture, store, create and maintain business processes



## Medical Claims Capture

- **IBM Datacap Taskmaster Medical Claims Capture**
- Capture CMS 1500 medical claims & UB-04 institutional claims
- Support for black claims
- HIPAA-compliant 837 EDI output



## Mobile Capture

- **IBM Content Navigator**
- **IBM Datacap**
- Capture anytime, anywhere with mobile device
- Input captured images from the point of capture to your ECM system



## Transactional Capture

- **IBM Datacap**
- **NSI AutoStore**
- **Imagine Solutions Encapture**
- Drive capture using MFPs with software prompts
- Put capture in the hands of customer-facing employees

## Why IBM Datacap?

**1.**

Single solution for end-to-end Content Management

**2.**

User-based pricing for improved TCO

**3.**

Rules Architecture offers unique flexibility

**4.**

Integrated central thick-client and distributed Web-client

**5.**

Scalable for basic, distributed and advanced capture



# Capture - The OnRamp To ECM



---

**Thank You**