

IBM Commerce

Modern World



Thomas Hurek
IBM DX Services US

Sven Sterbling
IBM DX Services DE

David Winter
IBM DX Development DE

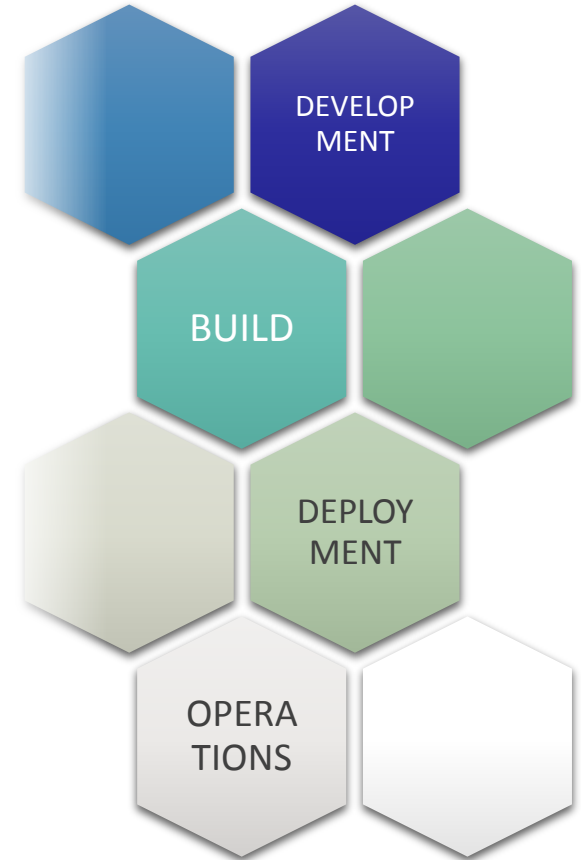
2-Speed IT

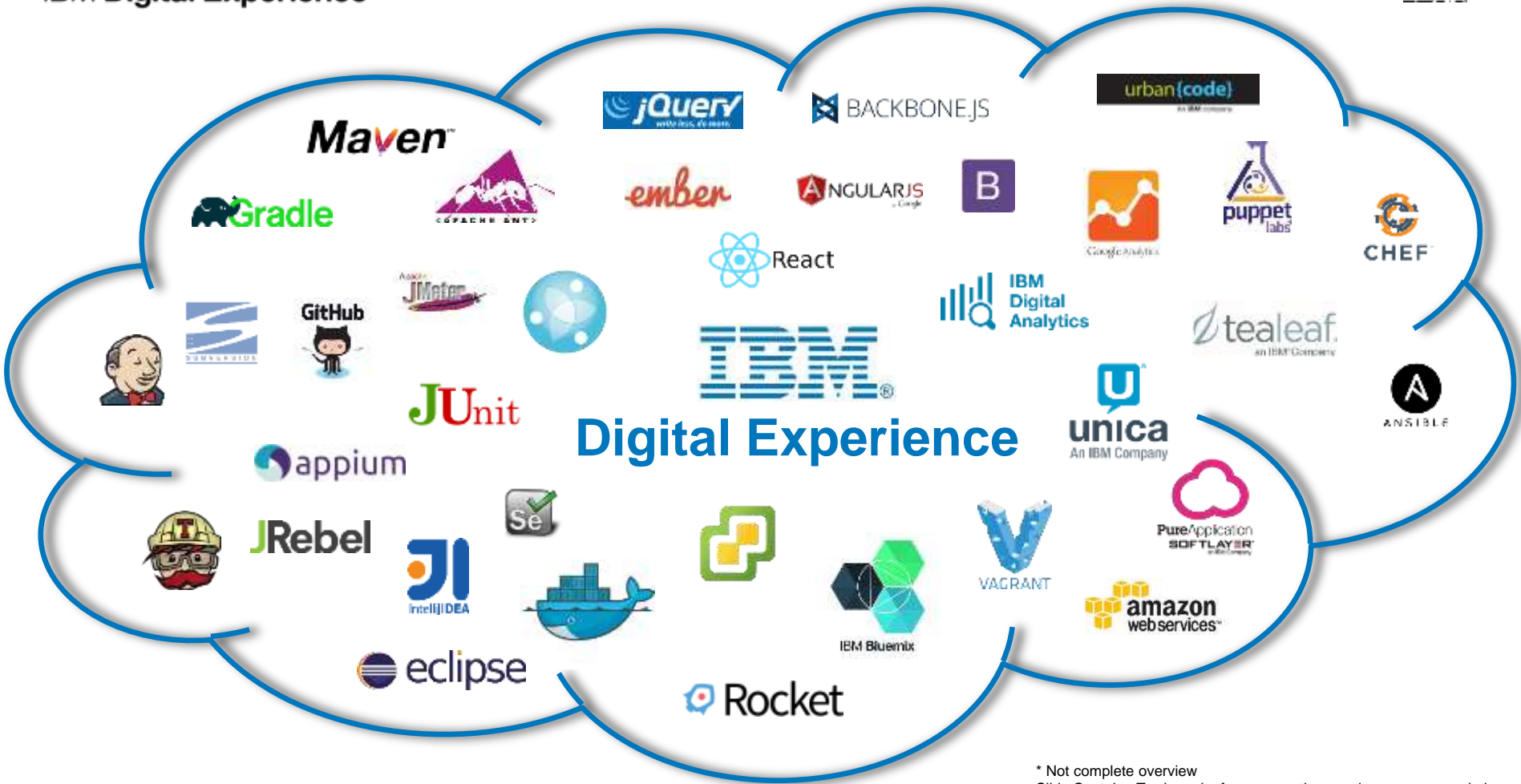
Traditional IT: Goal Reliability

- Long-term development plans and cycle times
- Process & IT driven
- Critical for core transactional and financial activities and risk- and regulatory-compliance management

Agile IT: Goal: Short time to market

- Short-term plans und shorter cycle time
- Business und end-user UI driven
- Iterative and modular development models





Modern Web Development



Libraries



Single Page Applications



+



BACKBONE.JS



elm

Asset management + Automation



And many more... (Unordered)



APACHE CORDOVA™



CoffeeScript



Maven™



TypeScript

Responsive Design



RESTful HTTP



(Web) Components



(Modern) Web Development with DX

- Script Portlet
- DX Sync
- Web Developer Toolkit
- Web-UI-Prototyping Toolkit
- Bluemix

DX Blog

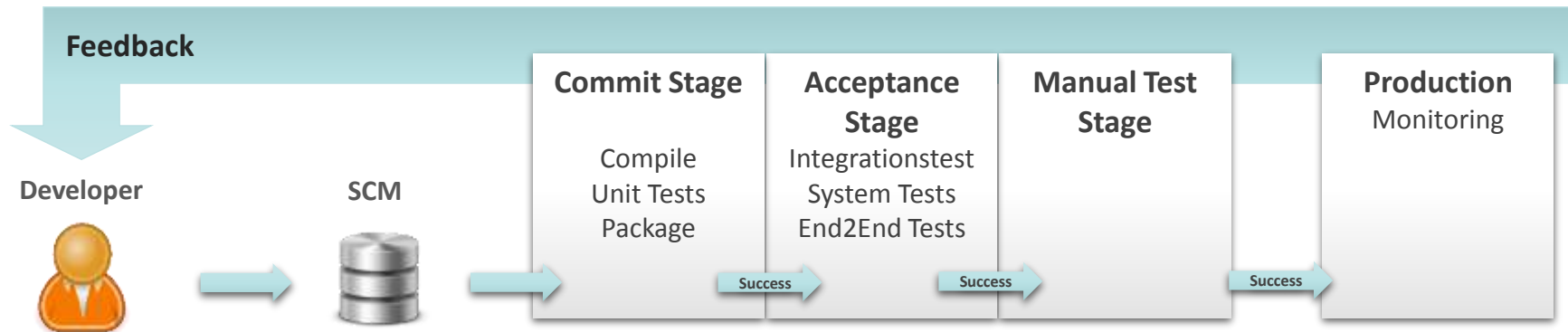
<https://developer.ibm.com/digexp/>

Modern Runtime

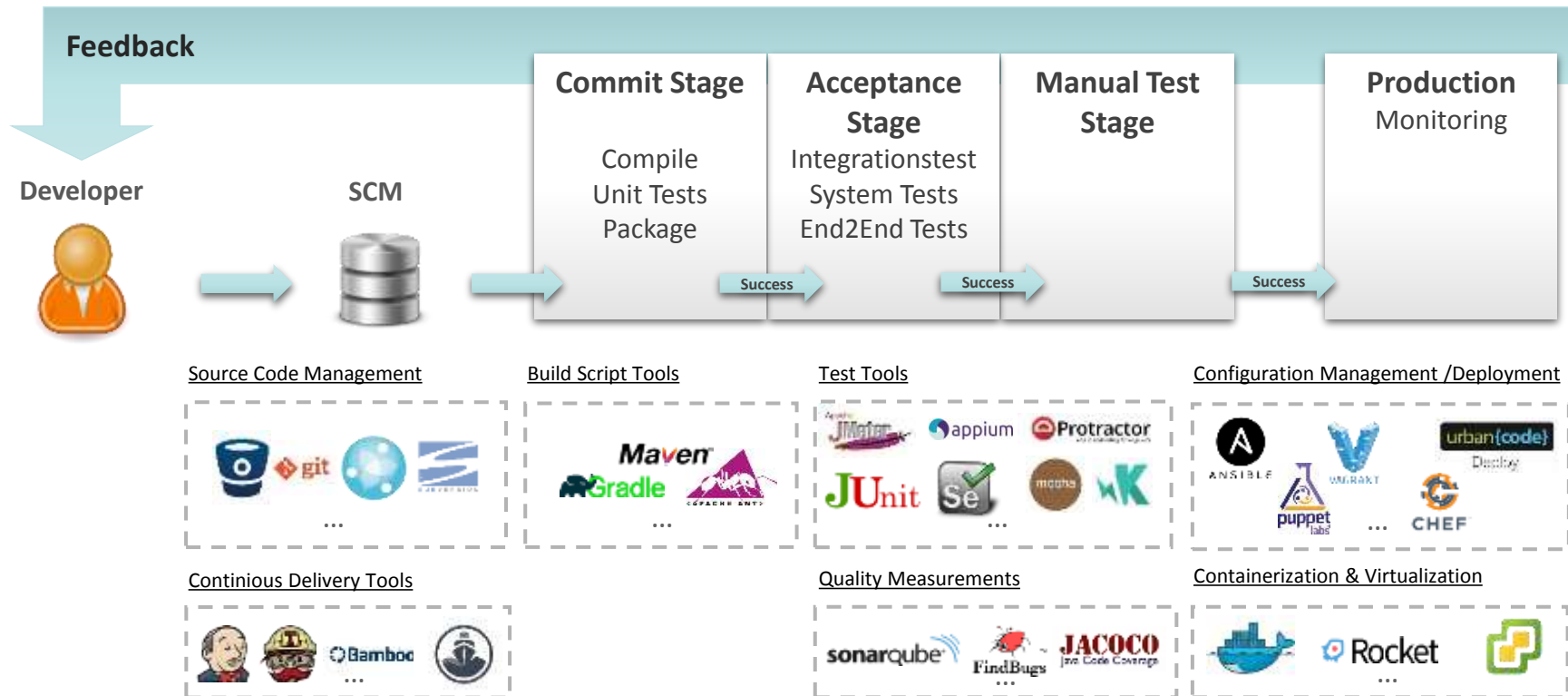


Build & Deployment

General Pipeline



General Pipeline and supporting tools



Package and Deployment

- Ability to package artifacts in Portal Application Archive
- Out-of-the-box APIs for automated deployment
 - Wsadmin
 - Xmlaccess
 - PAA Install
- Tools support for automated Deployment (example UrbanCode Deploy→)

Home » Applications » SampleApplication » Process Request

Application Process Request: SampleApplication

Process: InstallSample (Version 2)
 Environment: Call test Portal
 Only Changed Versions: None
 Date Requested: 2015-07-15 23:02
 Requested By: admin
 Scheduled For: 2015-07-15 23:02
[View Deployment Request](#)

This IBM UrbanCode Deploy server is in an evaluation mode until 18-Jul-2015. An extended evaluation license or a purchased product license key can be added by connecting to a Rational License Key Server on the System Settings page.

Log Properties Manifest

Execution Dock timeline at top

Start	Progress	Status	Duration	End
23:02:23	1/1	Success	0:01:17	23:03:41

Expand All Collapse All

Step	Progress	Start Time	Duration	Status
1. Install SamplePAA	1/1	23:02:23	0:01:17	Success
↳ SamplePAA	1/1	23:02:23	0:01:17	Success
↳ InstallPAA (SamplePAA 2.0)		23:02:23	0:01:17	Success
1. Cleaning the Working Directory		23:02:23	0:00:52	Success
2. Download Artifacts		23:02:25	0:00:03	Success
3. Install PAA		23:02:29	0:00:28	Success
4. Task Error Check for Install Paa		23:02:50	0:00:01	Success
5. Deploy PAA		23:02:52	0:00:48	Success
6. Task Error Check for Deploy Paa		23:03:04	0:00:02	Failed
Total Execution	1/1	23:02:23	0:01:17	Success

Modern Runtime



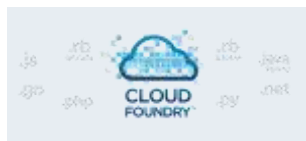
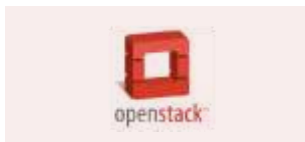
Cloud

Options

- PureApps
- Softlayer
- DX on Cloud
- Amazon Web Services Business partner

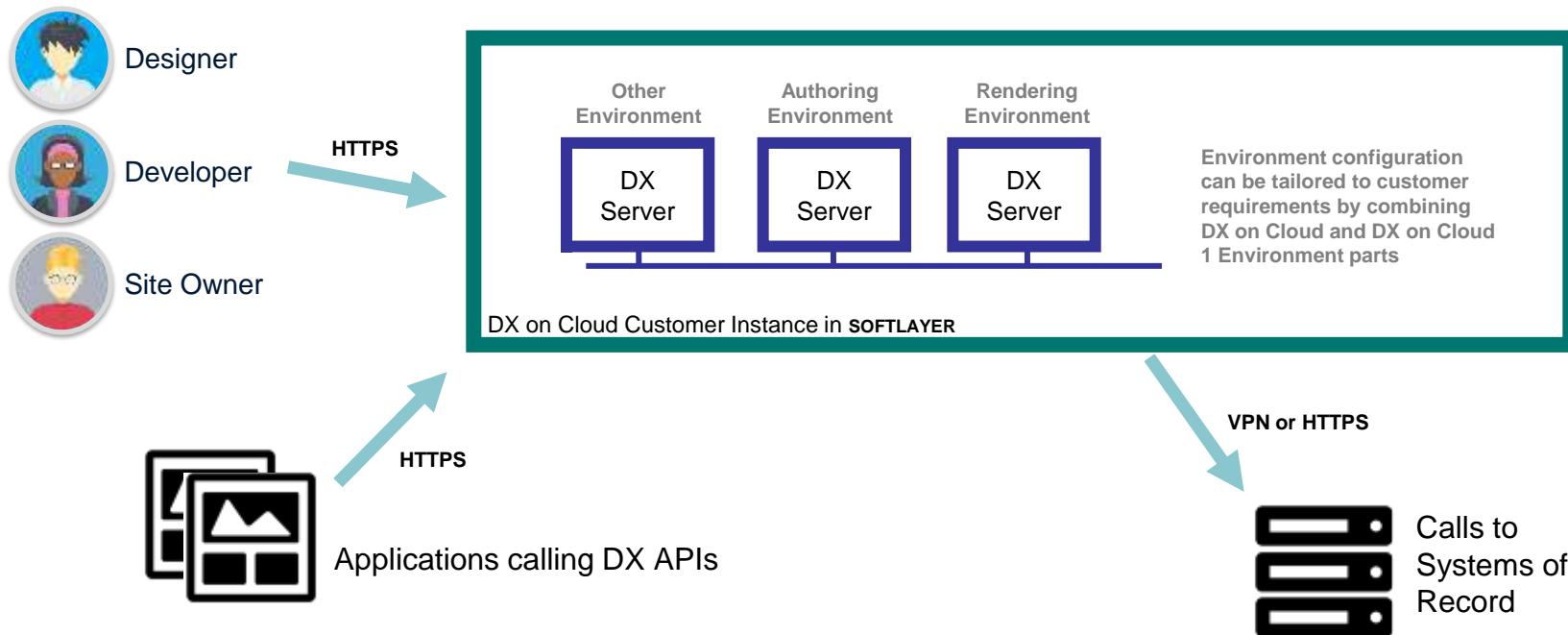


- VMWare, Docker, Open Stack container deploy anywhere



IBM Digital Experience on Cloud

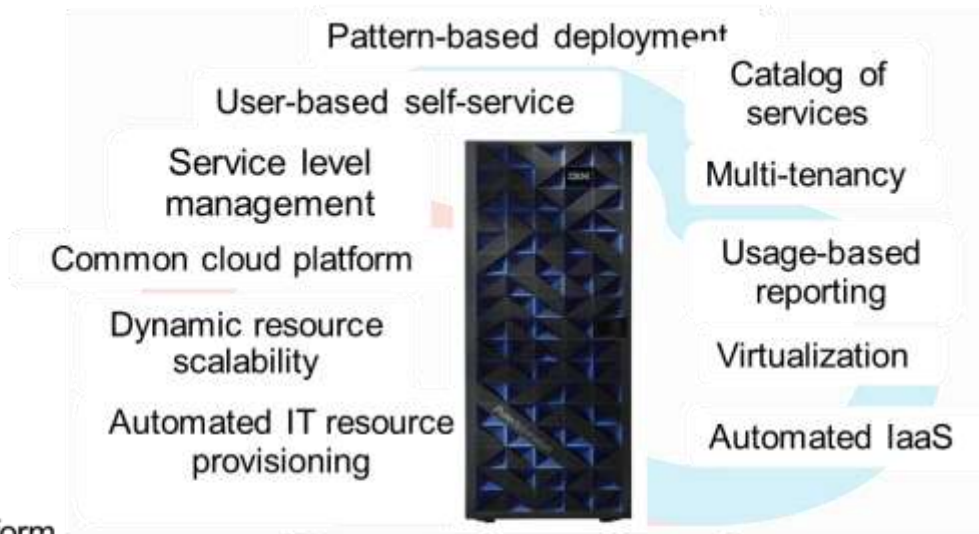
provides a secure customer environment isolated from other clients



IBM PureApplication

Expert integrated:

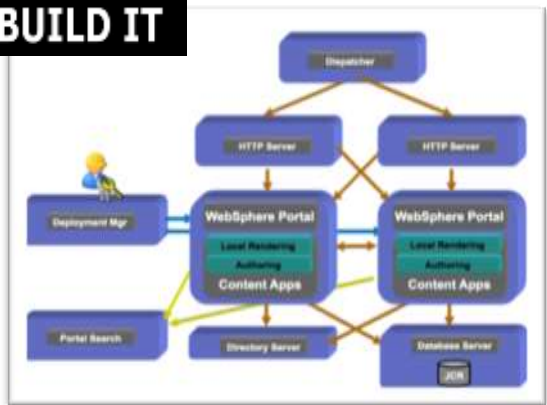
- Platform for applications
 - Application server
 - Database services
 - Compute (x86 or POWER)
 - Storage
 - Networking
- Platform management
- Built-in expertise – Infrastructure, platform, and application patterns
- Up and running in **less than 4 hours**
- Deploy and automatically scale applications **in minutes**



PureApplication
Built-for-cloud platform system
simplifying lifecycle **deployment**
and **management** of applications

IBM Digital Experience on IBM PureSystems

BUILD IT



PureSystems

30 minutes

Deploy using PureSystems

30% error reduction

Deploy Virtual System Pattern in PureSystems



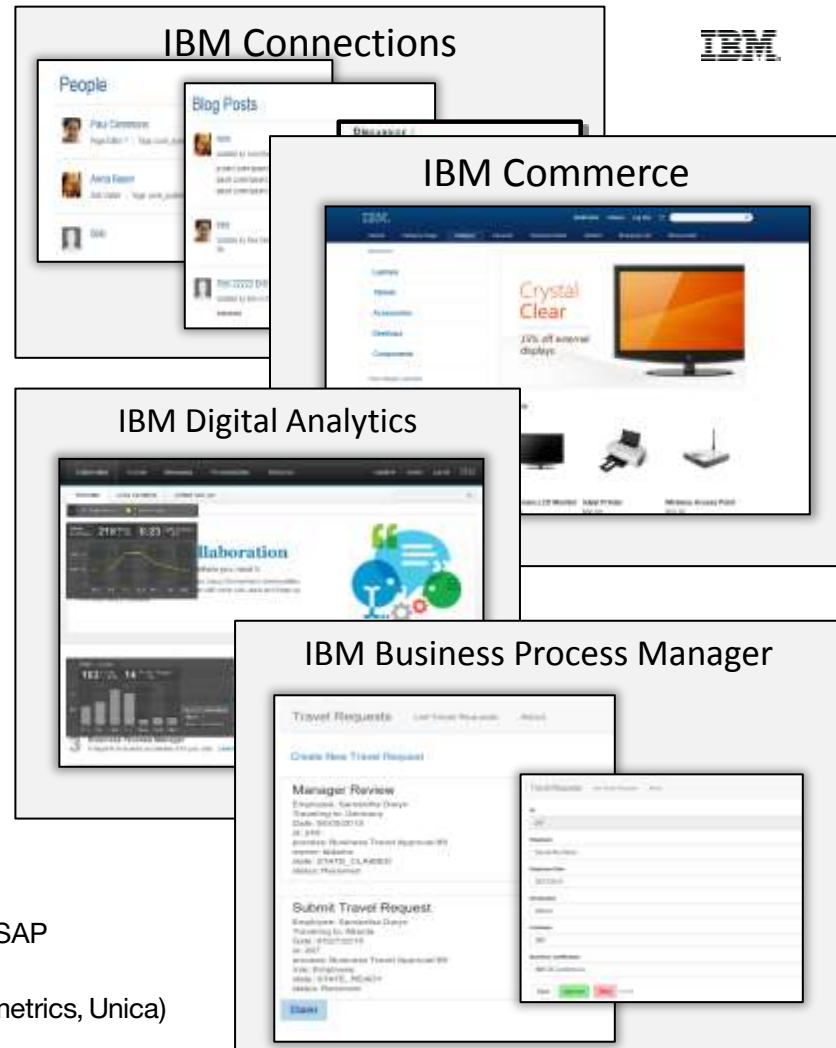
Modern Runtime



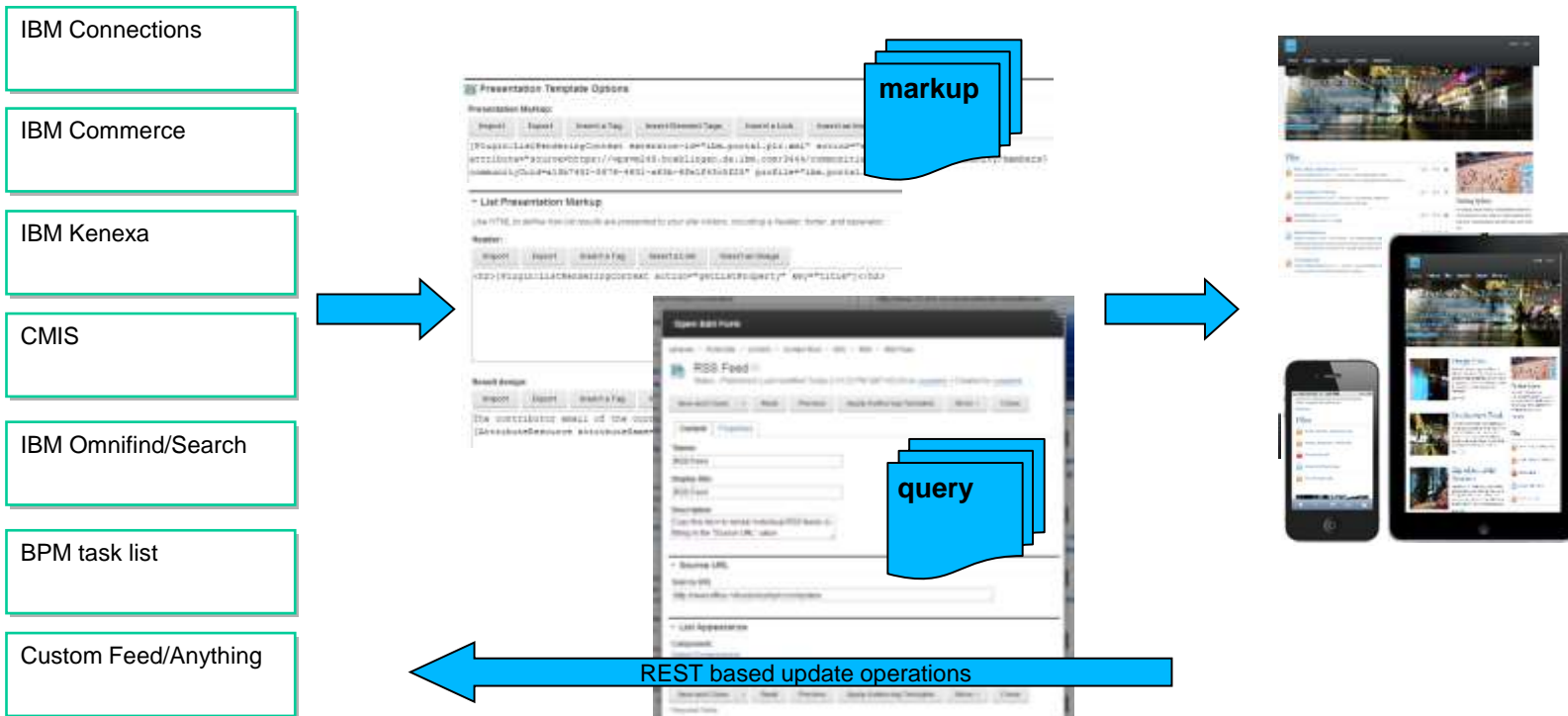
Integration

Integration

- Provides powerful and flexible integration features
 - REST services - external applications or services
 - Ajax proxy with SSO features
 - Digital Data Connector, Web Application Bridge, and Web App Integrator
- Java-based tools such as Rational Application Developer and Web Experience Factory
- Pre-built integrations are available:
 - IBM Connections, IBM WebSphere Commerce, and IBM Business Process Manager
- Integration samples and articles available:
IBM Business Process Manager, Bluemix, IBM Forms, MS SharePoint, and SAP
- Instrumented for analytics with IBM Tealeaf and IBM Digital Analytics (Coremetrics, Unica)



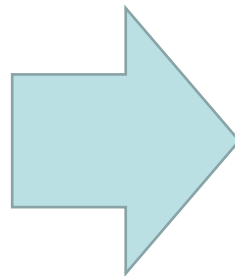
Digital Data Connector (DDC): Use WCM design components to render any external data, with no Java coding or deployment



Forms Experience Builder (FEB): Build complete data entry form solutions in minutes right from the browser without any coding

The image illustrates the IBM Forms Experience Builder (FEB) interface. On the left, the 'Event Registration' form is being built, showing a 'Personal Information' section with fields for 'First name', 'Last name', and 'Email'. A 'Workshop Selection' section is also visible. A blue arrow points from the FEB interface to a collection of three example forms: 'IT Satisfaction Survey', 'Feedback', and 'Benefits Enrollment Form'.

Client Side Integration



Location
Personalization
History
Device

...

DATAPOWER
technology

 **CAST IRON SYSTEMS**
An IBM Company



RESTful Services



Web Services

 **IBM Cloudant**

 **CouchDB**
relax



API Management
IBM

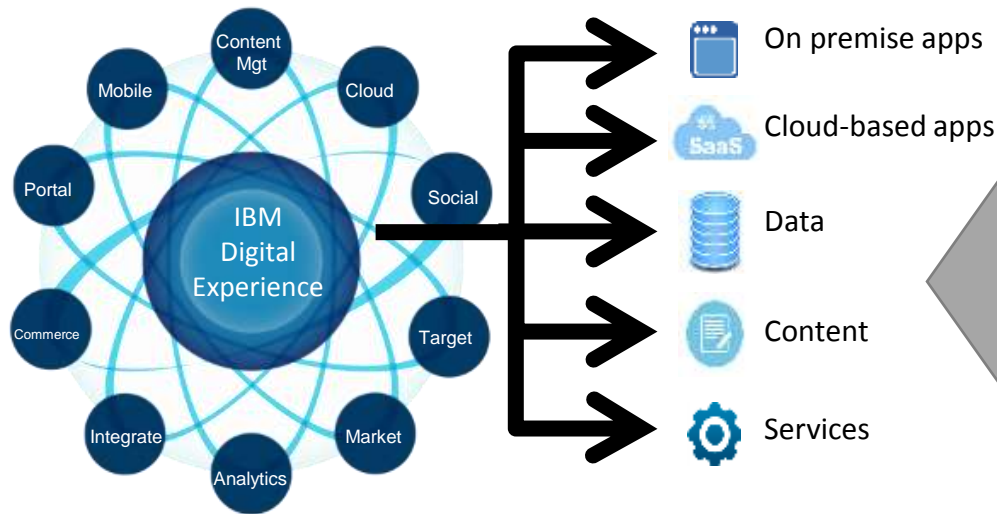
 **SWAGGER**



IBM Bluemix

 **amazon**
web services

Bluemix Integration

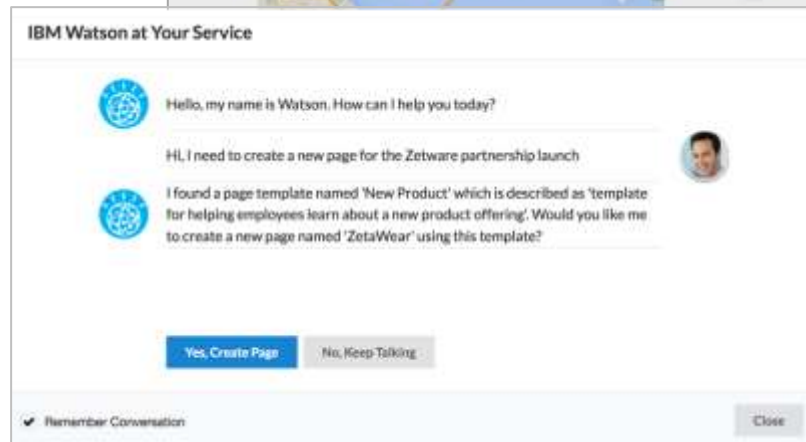


The Bluemix ecosystem contains both headless and visual services – which form a subset of an overall experience “on the glass”



DX Bluemix & Watson Samples

- Watson Q&A
- Watson Sentiment Analysis
- Weather data prediction
- Watson Translation
- Internet of Things visualization

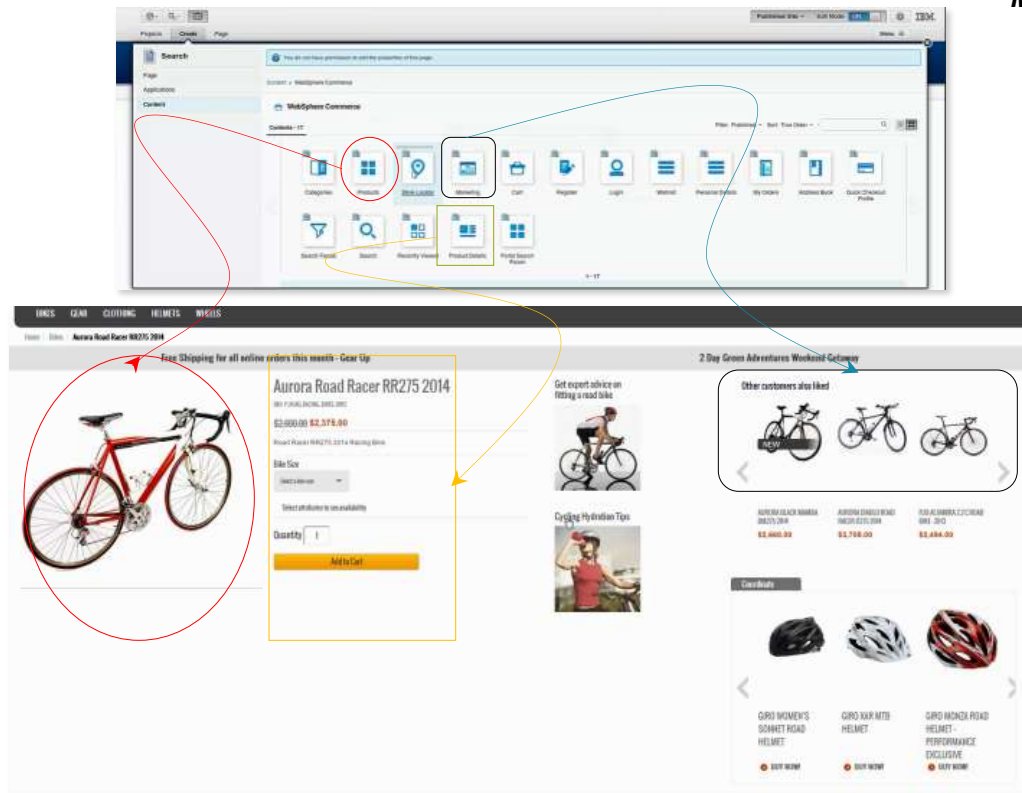


Language Translation
IBM



IBM Commerce Integration

Transform Product Catalog into Memorable Experiences



Demo:

<https://www.youtube.com/watch?v=ReEYBduNJs>

Modern Runtime



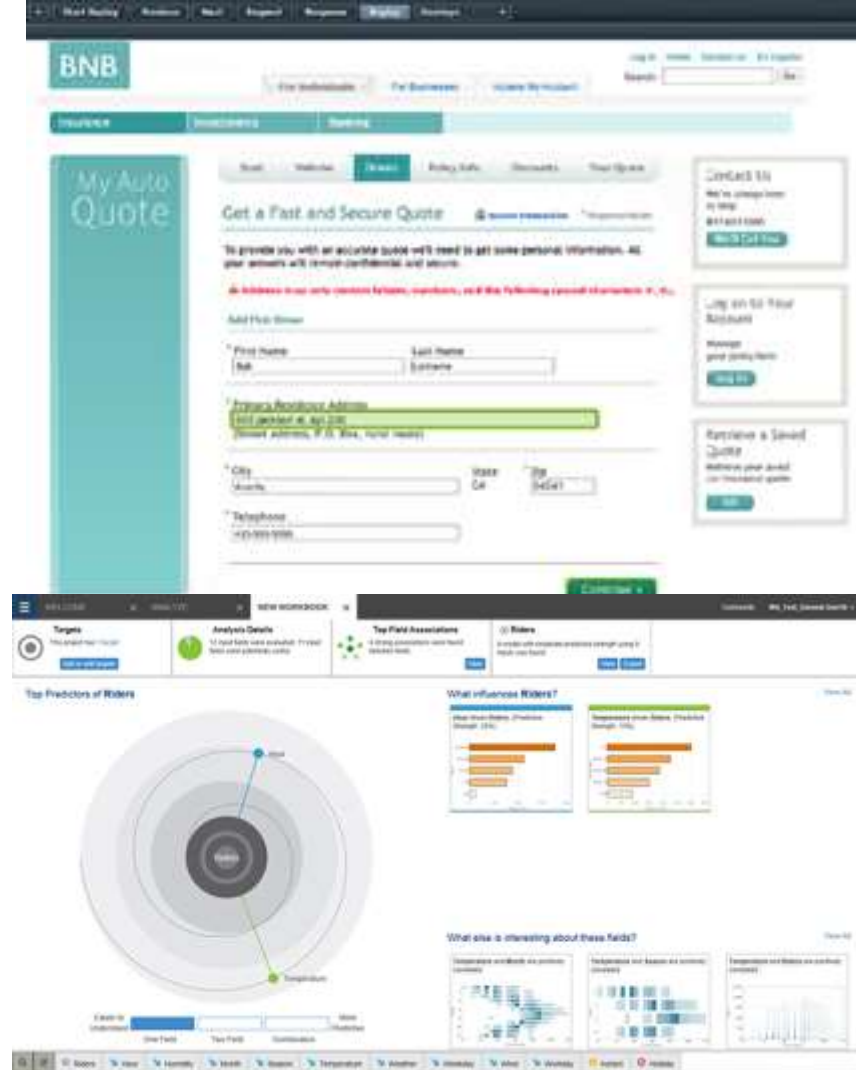
Analytics

Analytics

- Out of the box patterns and logic for integration with any analytics platform
- Special tests and integration for IBM Analytics – e.g. Tealeaf
- Tealeaf:
 - Lets you replay sessions, to see why users stopped or compliance on the transaction site
 - Heatmaps,
 - IBM Digital Analytics (Coremetrics) integration
 - Watson Analytics

Analytics

Executive Overview

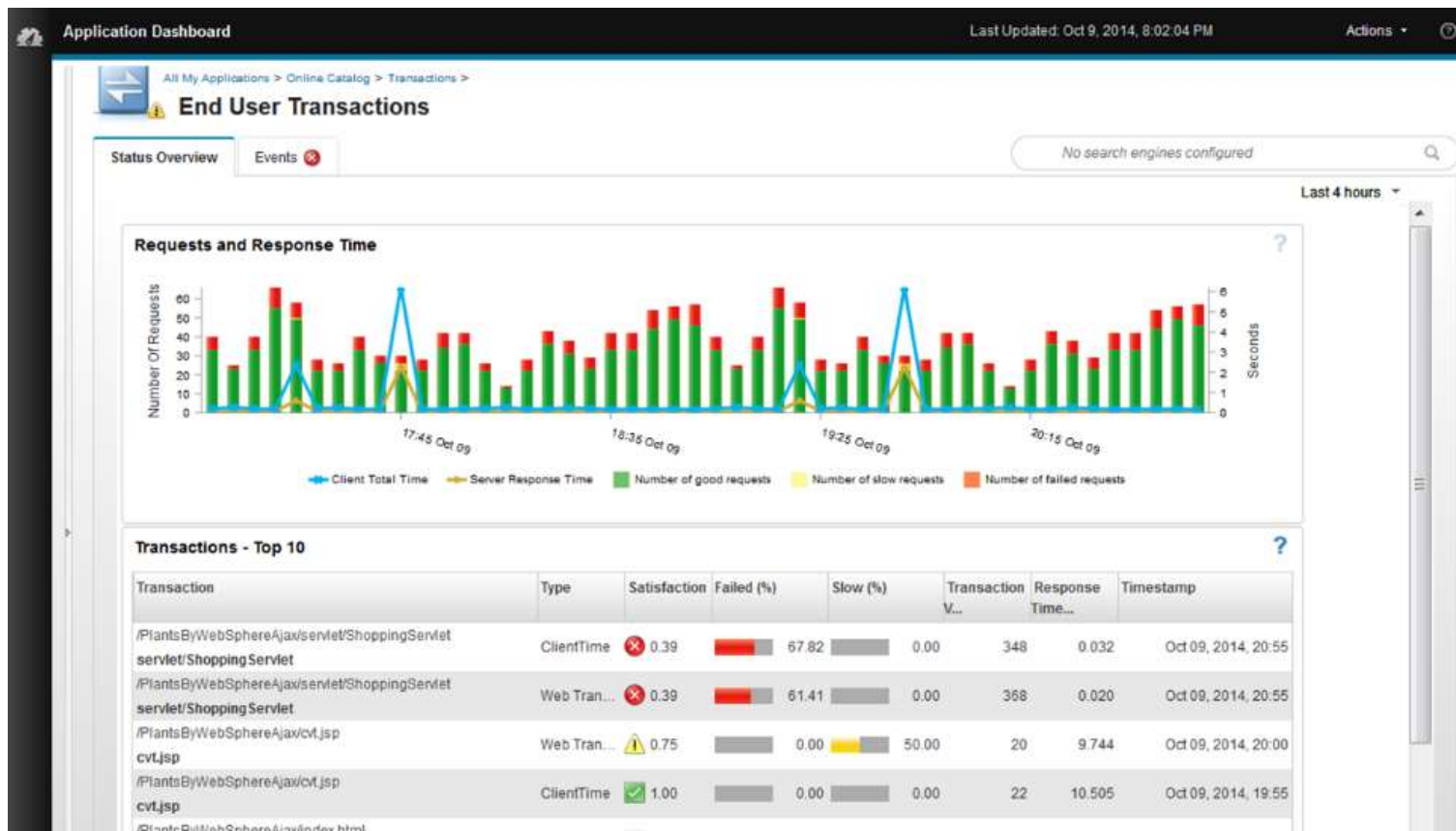


Modern Runtime

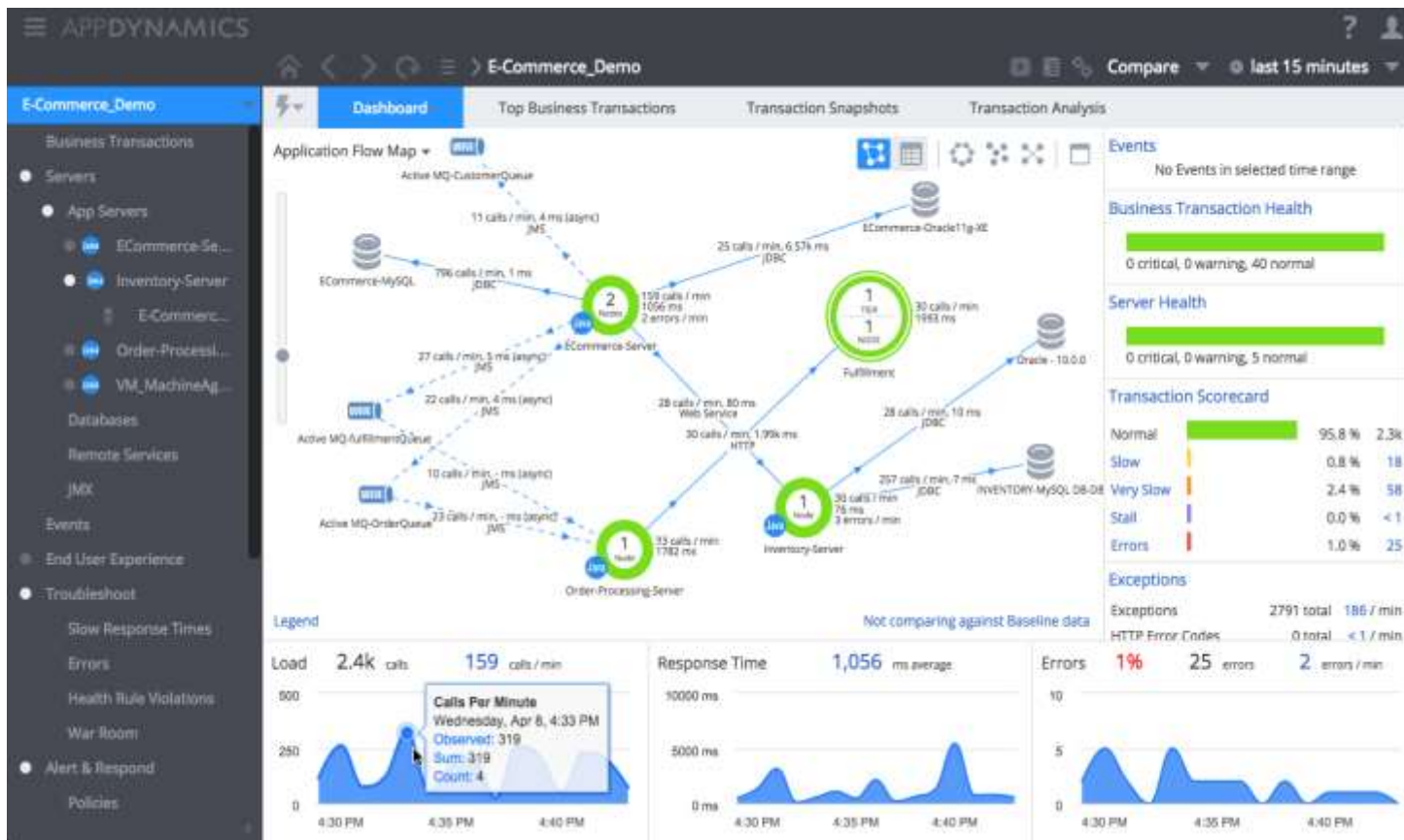


Monitoring

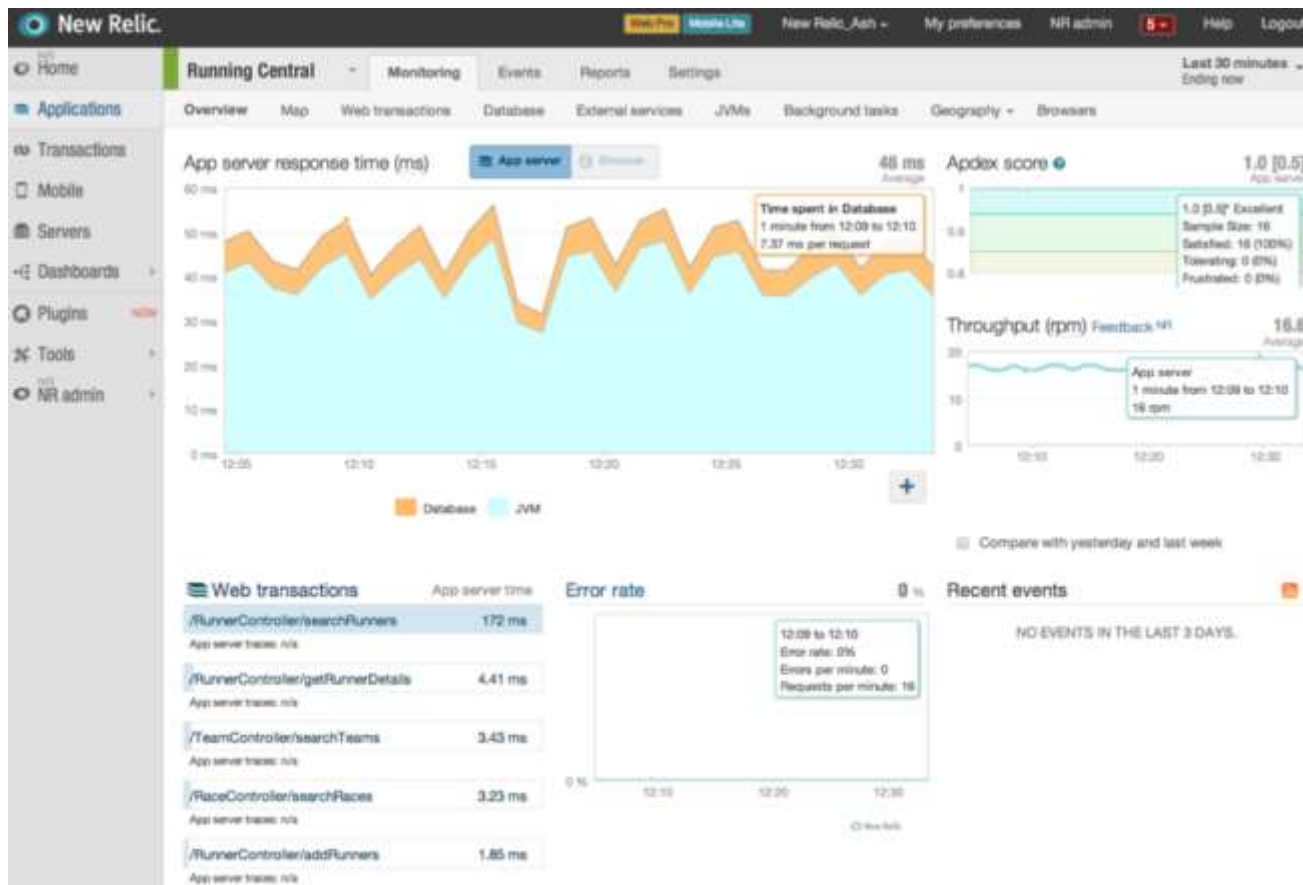
IBM APM



AppDynamics – Bottlenecks and Discovery



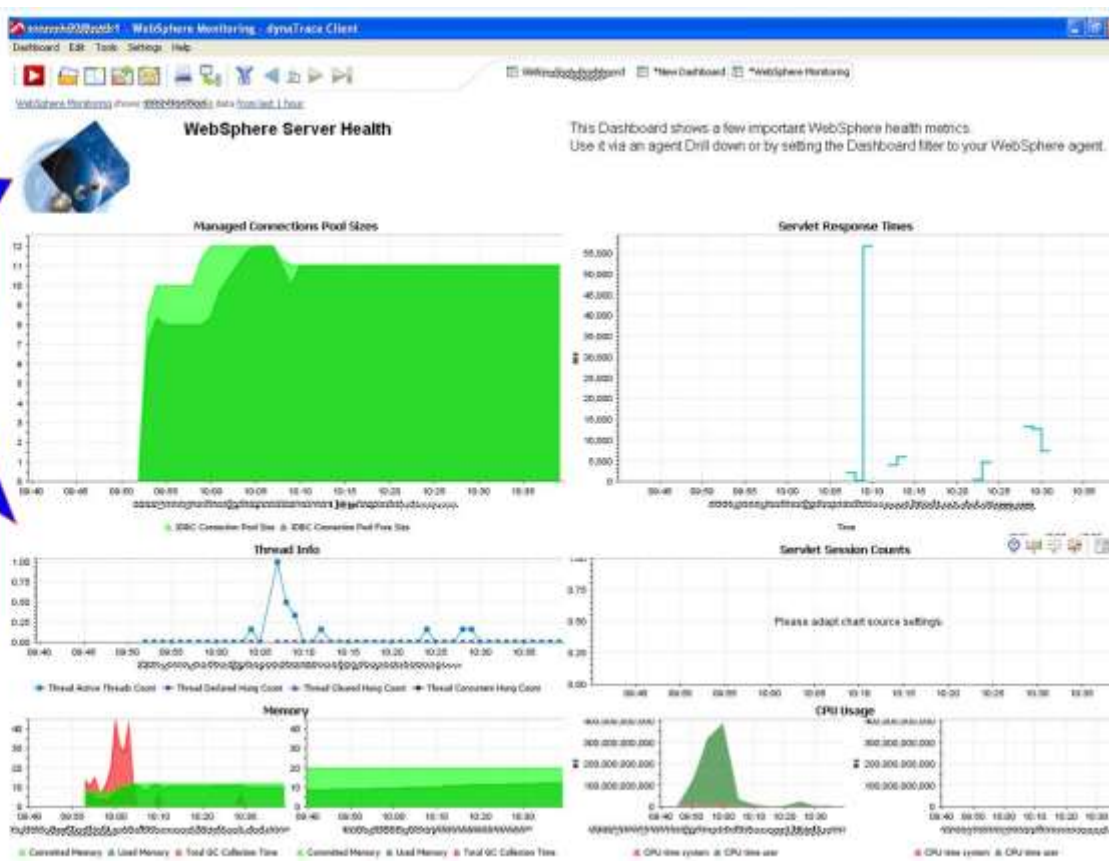
New Relic



Dynatrace

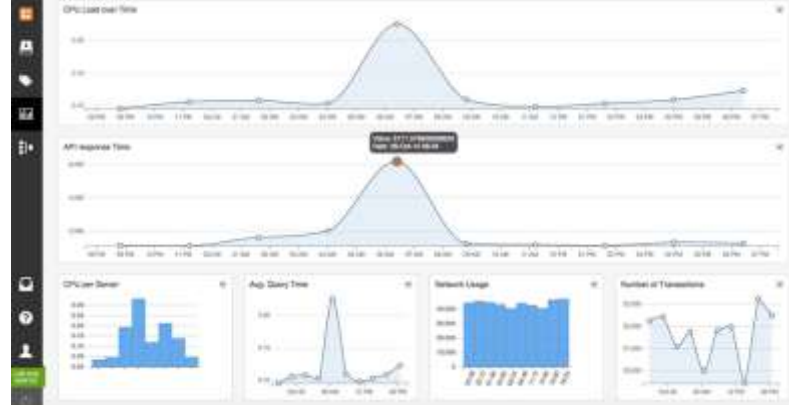
dynaTrace ships with an out-of-the-box dashboard for WebSphere Health

In addition, any application, container (JVM) and System (OS) metric can be collected and correlated

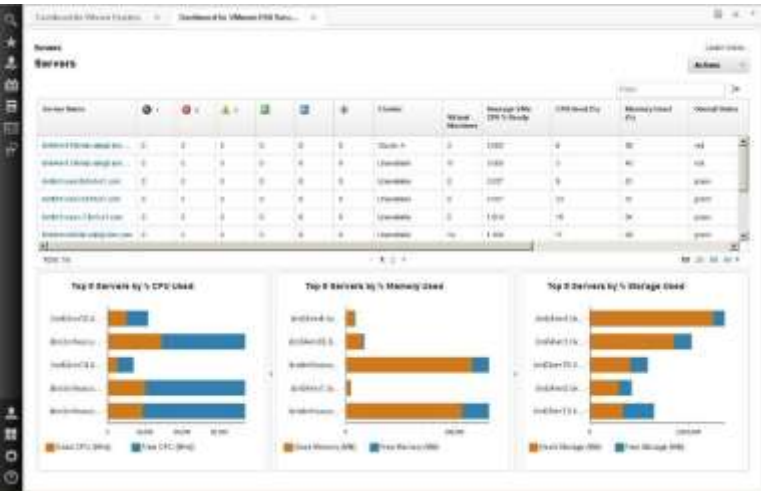


Cloud monitoring tools

AWS Cloudwatch



IBM Smart Cloud Monitoring



BMC Cloud Management



Thank you



**David Winter
Sven Sterbling
Thomas Hurek**



**Join the
conversation**
Blog, YouTube,
Twitter and Facebook

IBM Commerce

