



IBM Software Group

Transforming and Simplifying Software Development

Managing change and assets

Rational software

ON DEMAND BUSINESS

© 2004 IBM Corporation

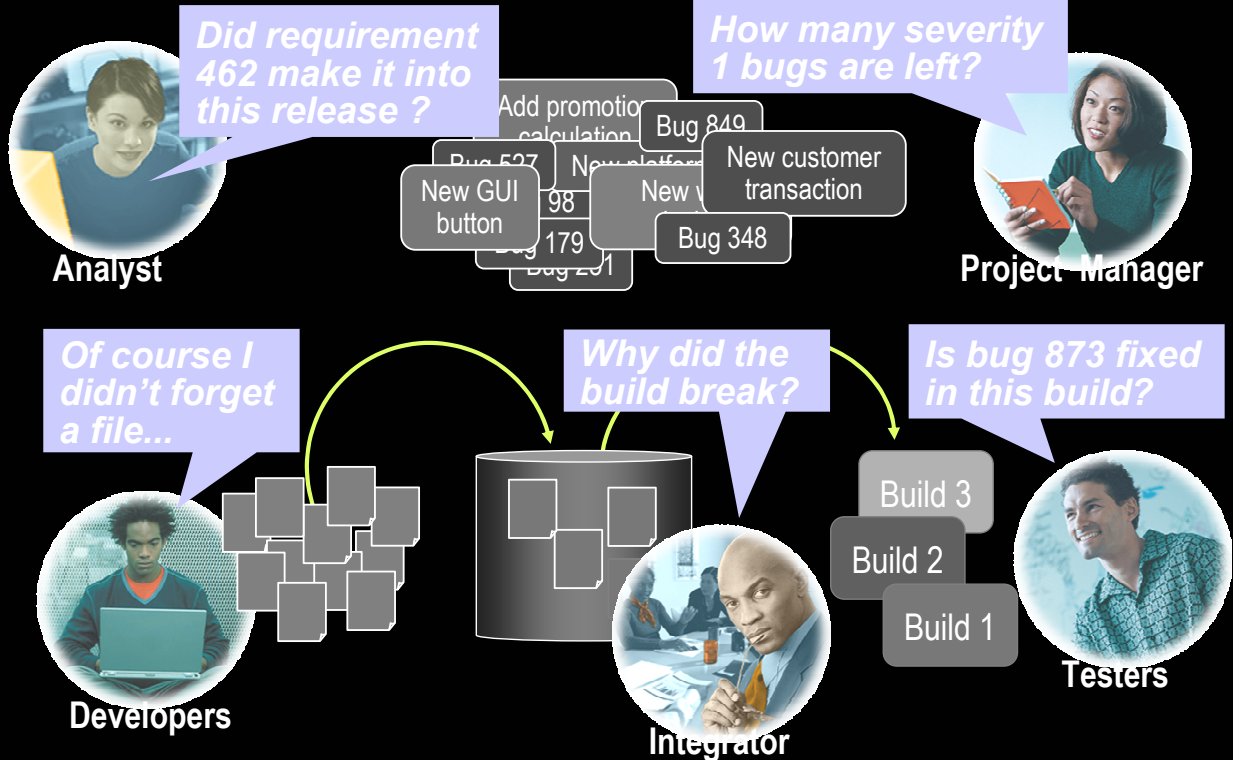
IBM Software Group | Rational software



Agenda

- Introduction to the IBM Software Development Platform
- New release announcements
- Application design and construction
- Continuously ensuring quality
- **Managing change and assets**
- Project portfolio management
- Conclusion

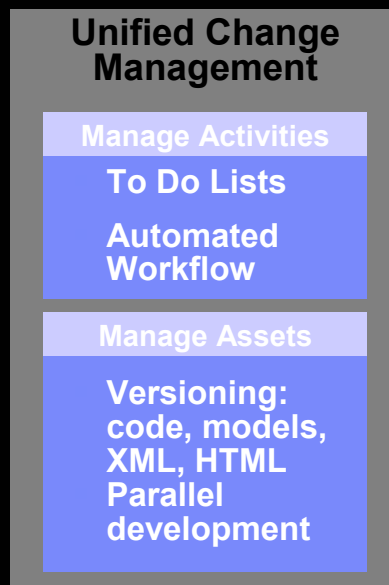
Managing Change: The Challenge



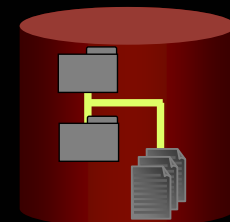
Activity-Based Change Management

Ensure predictable results

- Simplifies key SCM functions and workflows
- Easy to adopt
- Optimized for team productivity
- Based on hundreds of successful CM implementations



Manages High-level Objects



- ✓ Components
- ✓ Streams
- ✓ Baselines
- ✓ Activities



Manage change and assets

Its all about reducing costs, solving the most business critical problems first, maximizing results from software tool investments, and creating competitive advantage

- Distributed software development will continue to increase
 - ▶ Improved WAN access
- Reducing on-going administration costs across the lifecycle
 - ▶ Streamlined administration of distributed environments
 - ▶ Scalability
- Integrating the software development process with other key business processes
 - ▶ Project & Portfolio Management, Product Lifecycle Management, CRM, ERP, etc..



ClearQuest Change Management

- New Java Web UI
- Improved user experience
- Improved performance
- Leverages J2EE Technology
 - ▶ No longer requires an IIS server
 - ▶ Supports load balancing and fail over
- Streamlines web admin
 - ▶ Leverages "Rational Web Platform"

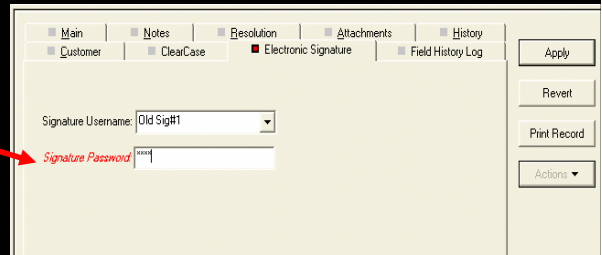
The screenshot displays the ClearQuest Change Management web application. The main area shows a table of change requests with columns for ID, Business Priority, Headline, State, Status, Owner, Submitted, Submitted by, Component, and CRType. Below the table, a detailed view of a change request (RATLC008452593) is shown, including fields for Change Request Type, State, Business Priority, Detect Severity, Status, How Was Problem Found, Product, Found in Version, Component, Found in Platform, SubComponent, Found in Language, Owner, and Found in Build. The description field contains the text: "Customer would like to have the option of either displaying the record in the previous area at the bottom of the screen or displaying the entire record."

ID	Business Priority	Headline	State	Status	Owner	Submitted	Submitted by	Component	CRType
1	RATLC00375065	be able to edit the description section when doing a change user profile	Submitted		sschippert			CO Web Java	RFE
2	RATLC00462583	Option to show entire defect on the page	Submitted		barbs			CO Web Java	RFE
3	RATLC00452613	RFE: Ability to add tabs and fields to history	Submitted		jmoorgan			CO Web Java	RFE
4	RATLC00691745	ResultSet Navigation from Record Display	Submitted		alberman			CO Web Java	RFE
5	RATLC00692114	Restricted query field should have a Browse button	Submitted		sscharma			CO Web Java	RFE

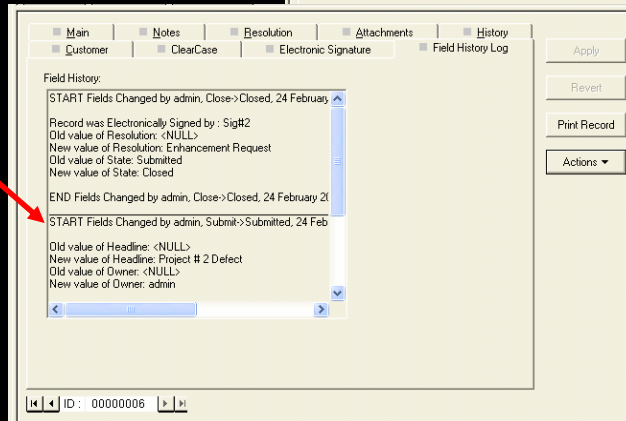


ClearQuest: Process and governance enhancements

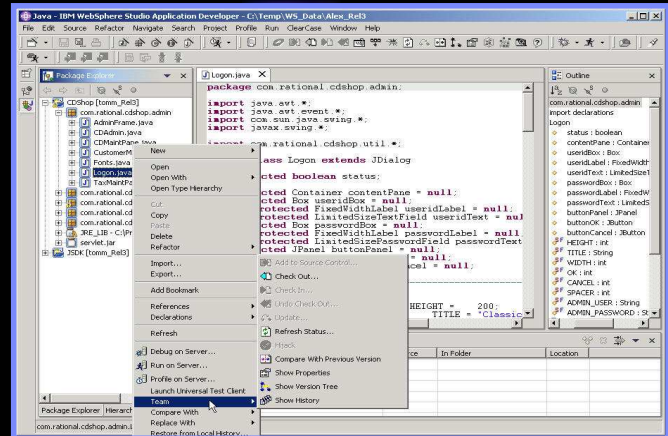
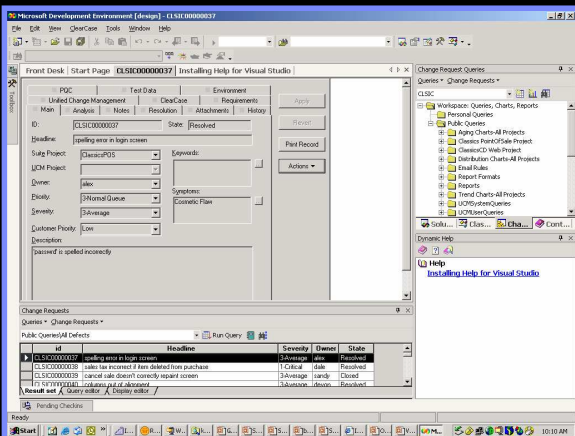
▶ Electronic Signature



▶ Audit Trail



Never leave your IDE to get your job done!

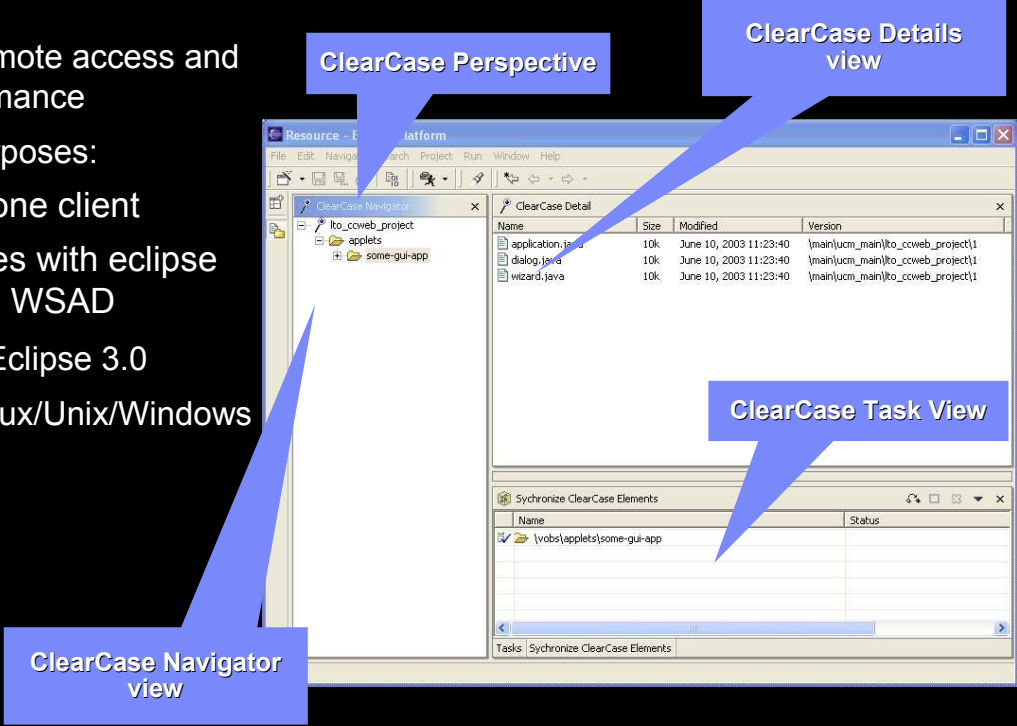


- ▶ Access your To Do List
- ▶ Run queries
- ▶ Check in/ Check out
- ▶ Change Sets Tracked for each activity
- ▶ Submit changes for integration



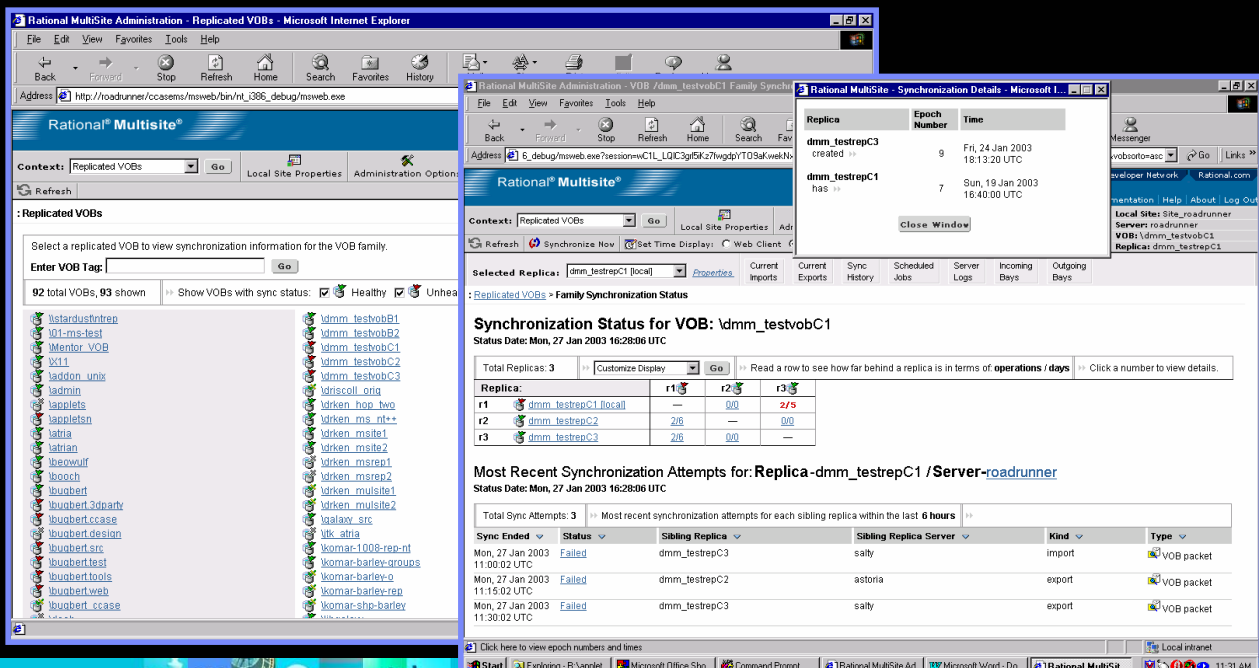
New ClearCase WAN client

- Improved remote access and WAN performance
- Serves 2 purposes:
 - Standalone client
 - Integrates with eclipse and IBM WSAD
- Support for Eclipse 3.0
- Supports Linux/Unix/Windows



ClearCase MultiSite administration web console

- Supports monitoring and administration of all SCM replications from anywhere



Agenda

- Introduction to the IBM Software Development Platform
- New release announcements
- Application design and construction
- Continuously ensuring quality
- Managing change and assets
- Project portfolio management
- Conclusion



Software runs the world.

1. Software built with development platform.
2. Wireless app designed without a glitch.
3. Latest interface deployed under budget.
4. New product launched ahead of schedule.
5. Better software leaves competition in dust.



Most significant advancement in software development since the delivery of the first Rational Suite

First Fully Integrated Development Platform



- Leveraging open source framework (Eclipse)
- Synergies among tools deliver collaborative development
- Raising individual and team productivity



Most Complete End-to-End Development Platform

- Simplifying Java development with JSF, EGL, SDO...
- Driving closer relationships between business and development
- Optimized for individual practitioners making development easy
- Providing executive level visibility into the development portfolio
- Enabling partner, customer and competitor ecosystem
- Translated for global support



Adding Greater Value to Proven Solutions

- Maintaining standards concurrency
- Providing broad capabilities for individual practitioners
- Supporting multiple environments (Java, .NET, Linux)
- Optimized for IBM Middleware (WebSphere, DB2, Workplace...)



Thank
You

