

Lotus software

IBM Lotus Workplace Web Content Management 2.0

Highlights

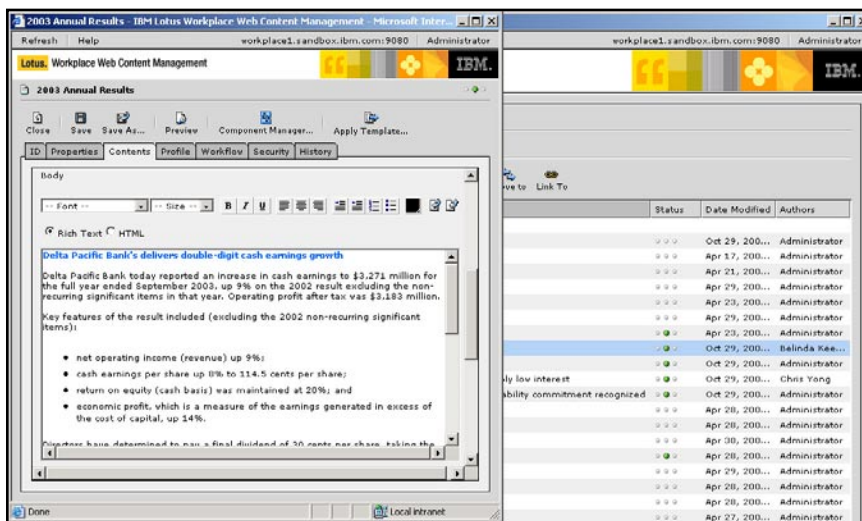
- **Helps speed information deployment by enabling users to manage Web content creation, life cycle, personalization and publishing**
- **Removes IT and webmaster bottlenecks when content management is placed in the hands of content experts**
- **Enables users to perform faster updates and can help them stay abreast of rapidly changing business needs**
- **Can deploy across existing infrastructures to leverage current IT investments**
- **Helps lower administration and development costs with a standards-based, scalable, security-rich solution**
- **Available in both Lotus Domino and Java 2 Platform, Enterprise Edition (J2EE) versions**

The challenge of Web content management

In today's data-intensive environment, enterprises rely on information as a critical asset. There is an intense need to capture, store and manage their copious sources of content. Developing content for these processes requires the integration of people, processes and information. It requires the timely creation, approval, publishing and archiving of content for intranet and e-business applications.

In addition, many businesses find that they must meet regulations of the marketplace and governmental requirements. The integrity of the process demands strict and auditable content management. And with the rise of portal-based applications also comes what can be a time-consuming, manual process of content creation.

Web content management typically requires specific programming skills. Publishing Web content across your Internet, intranet and extranet assets often becomes the job of the webmaster and IT employees. Any delay in keeping up with the demand of content deployment to customers, partners and users can block access to critical business information.



Content creation is template-based so authors are guided through the creation process.

Streamline content development while freeing IT resources

IBM Lotus® Workplace Web Content Management software is designed to accelerate Web content development and deployment. By enabling end users to easily create and publish content, you can speed the Web content management process. Reduce IT and webmaster bottlenecks. And ease the burden on your IT staff. Lotus Workplace Web Content Management software can help reduce costs by leveraging your existing IT investments and Web content.

Empower users to manage content to increase efficiency

Lotus Workplace Web Content Management software features an easy-to-use, portlet-based interface. So content experts and managers can quickly and easily create, publish and manage their own Web content from their desktops.

Using standard and familiar software applications programs and native authoring tools, end users can help accelerate development and delivery of business-critical information through your Internet, intranet and extranet sites

with author-once, publish-everywhere control. Lotus Workplace Web Content Management software integrates with IBM WebSphere® Portal software, enabling users to channel content into the portlets—all without the need for programming skills. And with the new versioning capability, historical versions of content and site assets can be saved and restored, if corporate policies or compliance rules require it. So employees can help increase the efficiency of managing Web content—including performing faster updates. More efficient content development can help employees, customers and partners access the business information they need when they need it. And it can help your organization keep pace with rapidly changing business needs.

Placing control of Web content management in the hands of the content experts and other users can help reduce the burden on your IT staff. It can also help remove time-consuming information bottlenecks between your webmaster and IT personnel.

Lotus Workplace Web Content Management helps simplify and streamline content creation, allowing business users without development skills to build entire sites using a content template and reusable components. Because it is user-run and managed, Web content management helps accelerate the development and delivery of critical business information.

Reduce IT costs by leveraging existing systems and content

You can leverage your IT investments to help reduce your total cost of ownership (TCO) by deploying and integrating Lotus Workplace Web Content Management software across existing infrastructures, including your IBM Lotus Domino® or IBM WebSphere platform. The new application programming interface (API) externalization feature gives organizations the ability to build solutions for migrating and importing from other Web content management products, doing advanced rendering and batch processing of content. Open, standards-based Lotus Workplace Web Content Management software can smoothly integrate your supported front-end, Web, legacy and back-end systems into a unified solution—generally without reengineering or expensive upgrades.

Lotus Workplace Web Content Management can help reduce costs, accelerating development and delivery of critical business information across your enterprise. The powerful and sophisticated content management solution is remarkably easy to use. Instead of tying up IT staff, it generally requires standard office skills to help rapidly harness and optimize the flow of information across your Internet, intranet and extranet sites.

In addition to user control, Lotus Workplace Web Content Management can help bring down the cost of ownership by bringing collaborative workflow to team contributions, approvals, and the retention of content versions and approval history.

This scalable solution runs on both Domino and WebSphere platforms and provides for the integration of WebSphere Portal. Enhanced integration with IBM DB2® Content Manager allows authors to associate content from DB2 Content Manager with their Web content, making it an excellent solution for leveraging an existing IT investment.

Give users the tools they need to keep business productive

IBM Lotus Workplace Web Content Management software can easily integrate end users with the process of Web content development. Enabling employees to manage their own content helps streamline the process by circumventing delays that can occur when one webmaster manages all content. And it helps free staff members to perform core IT tasks. By integrating your existing systems into a single solution, you can leverage your IT investments and stored content to help lower your TCO. So your end users can keep business content current and available while you focus on your job—without breaking the budget.

Leading-edge services and solutions —available whenever and wherever you need them

The Lotus Workplace Web Content Management extensive set of capabilities can add significant business value, which can be further enhanced when they're customized to fit specific industries or customer needs. These capabilities can provide options for you to leverage the technical expertise offered by IBM Software Services for Lotus and IBM Business Partners when you choose to deploy and customize the full set of Lotus Workplace Web Content Management functionality.

IBM Software Services for Lotus is a worldwide organization that helps companies achieve the best results and return on investment (ROI) from Lotus software solutions. These advanced services complement the robust capabilities of IBM technologies, such as IBM Lotus Notes®, IBM Lotus Domino®, IBM Lotus Instant Messaging and Web Conferencing (IBM Lotus Sametime®) and IBM Lotus Team Workplace (IBM Lotus QuickPlace®) software. By engaging the IBM Software Services for Lotus team, you can get support for your key processes and enable the ongoing transformation of your organization.

IBM Business Partners, located in more than 80 countries around the world, offer a breadth of solutions and services that enable companies to successfully communicate, collaborate and learn. By engaging with an IBM Business Partner, you can obtain solutions and services—vertical or horizontal—which are uniquely tailored to your organization.

When you choose IBM Lotus Workplace Web Content Management software, you get a lot more than just a robust collaboration solution. Lotus software products from IBM give you access to vast resources through the global team at IBM Software Services for Lotus and its network of qualified IBM Business Partners. These resources are available to help you quickly maximize the capabilities of your software solution and to achieve a fast return on your investment. Through expert consultation, in-depth understanding of Lotus technologies, custom application development, real-world experience and knowledge transfer, IBM Software Services for Lotus and IBM Business Partners can help you turn your IT investments into quantifiable business value.

To learn more about IBM Software Services for Lotus and IBM Business Partners, visit

ibm.com/lotus/services

ibm.com/lotus/partners

For more information

To learn more about IBM Lotus Workplace Web Content Management software, visit

ibm.com/lotus/products/
product5.nsf/wdocs/homepage

IBM Lotus Workplace Web Content Management at a glance

Lotus Domino edition

Application server

- Lotus Domino Server 5 and 6.5
 - WebSphere® Portal 5.0 (rendering portlet)
-

Supported platforms

- Microsoft® Windows® 2000 Service Pack 4 and Windows 2003
 - Microsoft Windows XP (client platform only)
 - Sun Solaris, Version 8 and 9
 - IBM AIX® Version 5.2
 - SuSE Linux 8.0 (Intel® processor)
 - Red Hat Linux 8.0 (Intel processor)
 - zLinux (SuSE SLES Linux 8.0)
 - IBM iSeries™ (IBM OS/400® Version 5 Release 2)
-

Client/browser support

- IBM Lotus Notes® 5 and 6
 - Microsoft Internet Explorer, Version 5.5 with Service Pack 2
 - Internet Explorer, Version 6 with Service Pack 1
 - Netscape 7
-

Repository support

- Lotus Domino Notes Storage Facility (NSF)
-

Integration with Lotus Domino applications

- IBM Domino.Doc® 6.5.1
 - IBM Lotus Workflow 6.5.1
-

Java™ edition

Application server

- WebSphere Application Server, Version 5.0
 - WebSphere Portal 5.0 (rendering portlet)
-

Supported platforms

- Microsoft Windows 2000 Service Pack 4 and Windows 2003
 - Microsoft Windows XP (client platform only)
 - Sun Solaris, Versions 8 and 9
 - IBM AIX Version 5.2
 - SuSE SLES Linux 8.0 (Intel processor)
 - Red Hat Linux Advanced Server 2.1 (Intel processor)
 - zLinux (SuSE SLES 8.0)
 - IBM iSeries (OS/400 Version 5 Release 2)
-

Client/browser support

- Internet Explorer, Version 5.5 with Service Pack 2
 - Internet Explorer, Version 6 with Service Pack 1
 - Mozilla 1.4 and 1.5 (rendering only)
 - Netscape 7 (rendering only)
-

Repository support

- IBM DB2, Versions 7.2 and 8
 - IBM DB2 400
 - IBM DB2 Content Manager, Version 8.2
 - Oracle9i
 - SQL Server 2000 with Service Pack 3
 - IBM Informix® 9.4
 - IBM Cloudscape™ 5.1
 - File system (flat file)
-



© Copyright IBM Corporation 2004

Lotus Software
IBM Software Group
One Rogers Street
Cambridge, MA 02142
U.S.A.

Produced in the United States of America
05-04
All Rights Reserved

AIX, Cloudscape, DB2, Domino, Domino.DOC, the e(logo)business on demand lockup, IBM, the IBM logo, Informix, Lotus, Lotus Notes, QuickPlace, Sametime and WebSphere are trademarks of International Business Machines Corporation in the United States, other countries or both.

Microsoft and Windows are trademarks of Microsoft Corporation in the United States, other countries or both.

Intel is a trademark of Intel Corporation in the United States, other countries or both.

Java and all Java-based trademarks are trademarks of Sun Microsystems, Inc. in the United States, other countries or both.

Other company, product and service names may be trademarks or service marks of others.