



Lotusphere2011

IBM Software

INV107

Strategies de development
d'applications Lotus

La revolution du social

Philippe Riand

Achitecte, development d'application,
IBM Collaboration Solutions





Legal Disclaimer

© IBM Corporation 2011. All Rights Reserved.

The information contained in this publication is provided for informational purposes only. While efforts were made to verify the completeness and accuracy of the information contained in this publication, it is provided AS IS without warranty of any kind, express or implied. In addition, this information is based on IBM's current product plans and strategy, which are subject to change by IBM without notice. IBM shall not be responsible for any damages arising out of the use of, or otherwise related to, this publication or any other materials. Nothing contained in this publication is intended to, nor shall have the effect of, creating any warranties or representations from IBM or its suppliers or licensors, or altering the terms and conditions of the applicable license agreement governing the use of IBM software.

References in this presentation to IBM products, programs, or services do not imply that they will be available in all countries in which IBM operates. Product release dates and/or capabilities referenced in this presentation may change at any time at IBM's sole discretion based on market opportunities or other factors, and are not intended to be a commitment to future product or feature availability in any way. Nothing contained in these materials is intended to, nor shall have the effect of, stating or implying that any activities undertaken by you will result in any specific sales, revenue growth or other results.

All customer examples described are presented as illustrations of how those customers have used IBM products and the results they may have achieved. Actual environmental costs and performance characteristics may vary by customer.

IBM, the IBM logo, Lotus, Lotus Notes, Notes, Domino, Quickr, Sametime, WebSphere, UC2, PartnerWorld and Lotusphere are trademarks of International Business Machines Corporation in the United States, other countries, or both. Unyte is a trademark of WebDialogs, Inc., in the United States, other countries, or both.

Java and all Java-based trademarks are trademarks of Sun Microsystems, Inc. in the United States, other countries, or both.

All references to Renovations or Zeta Bank refer to a fictitious company and are used for illustration purposes only.



Agenda

Directions for application development

The IBM Social Business Framework

Product updates



Agenda

Directions for application development

The IBM Social Business Framework

Product updates



Social Business is driven by exceptional experiences

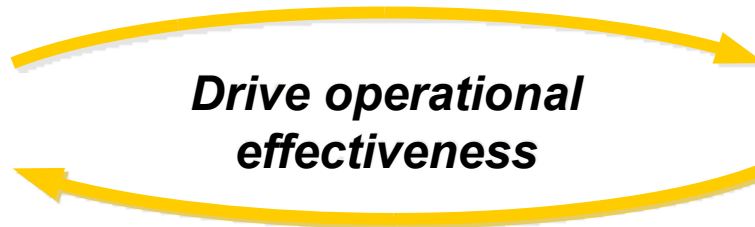
Get Social. **Do Business.**

Business outcomes

Deepen client relationships

Drive operational effectiveness

Optimize your workforce



Realized through

Exceptional Web Experiences

Enable **engaging customer interactions**
Self-service, with other customers, with company representatives, and with the company overall (brand, revenue)

Exceptional Work Experiences

Enable **nimble employee interactions**
Peer to peer and in teams, with customers and partners, and with the company overall, business to employee

Enabled by

IBM Social Business Framework

A modular and open set of capabilities that accelerate the development of advanced Social Business solutions



The IBM Social Business Framework

Enabling exceptional experiences

Designed to enable IBM customers and partners to capitalize on Social Business opportunities, building on existing investments in technologies and skills

Solutions differentiated by...

Exceptional user experiences

Unmatched social collaboration capabilities

The ability to integrate industry-leading capabilities in business analytics, enterprise content management, commerce, and others

An open web architecture that protects customer investments

IBM Social Business Framework

A modular and open set of capabilities that accelerate the development of advanced Social Business solutions

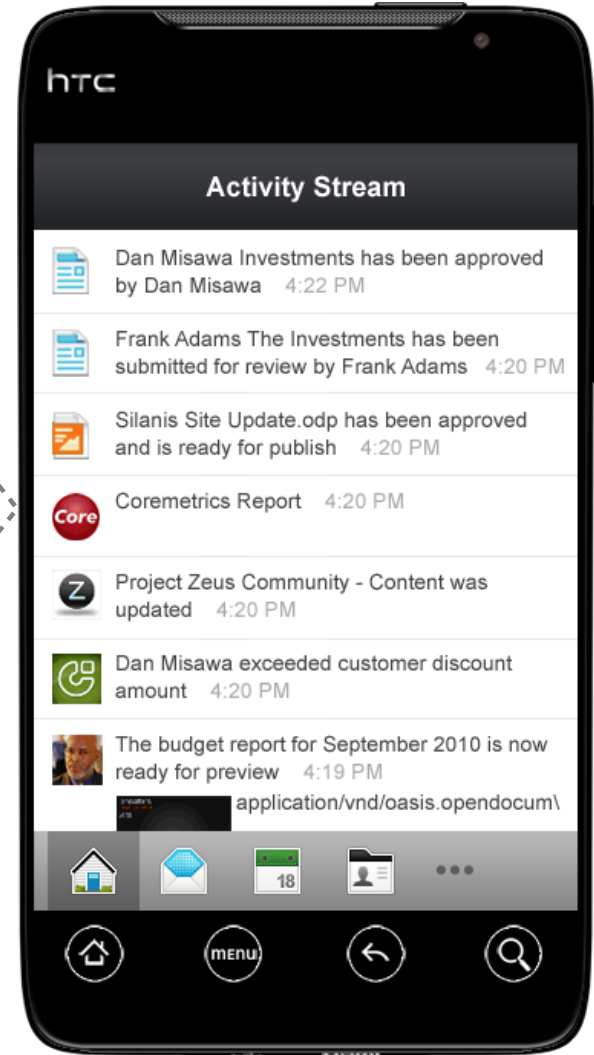


Directions for application development

Social capabilities

Mobile enablement of applications

Accelerated development





Social capabilities transform the experience

Enabling interactions through online social networks

Rich user profiles and social methods to collaborate, share, and reuse content

Enhancing situational awareness by analyzing social data

Consumer insight

Expertise location

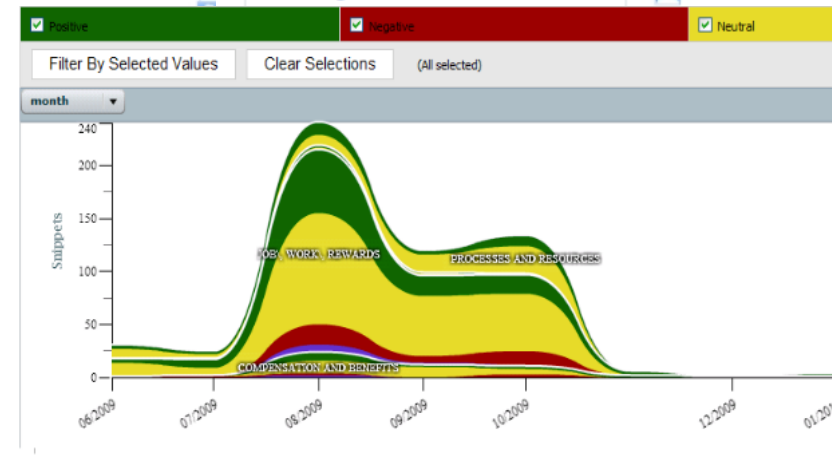
Recommendations

Supporting contextual collaboration by integrating social capabilities into business applications

Communities

Microblogging and content sharing

Unified communications





Mobile applications increase reach and engagement

Significant new business opportunities for application developers



IBM strategy: Support the needs of developers to target multiple platforms, making it easy to quickly mobilize a wide range of existing and new applications, with consistent extensibility across platforms

Start today with Domino XPages apps, Connections mobile web, Mobile Portal Accelerator

Major focus of development in 2011

Mobile strategy covered in depth in breakout session INV108



BlackBerry

NOKIA
Connecting People



Accelerated development

Make the new generation of applications easy to build

Productive tools

Powerful and consistent APIs

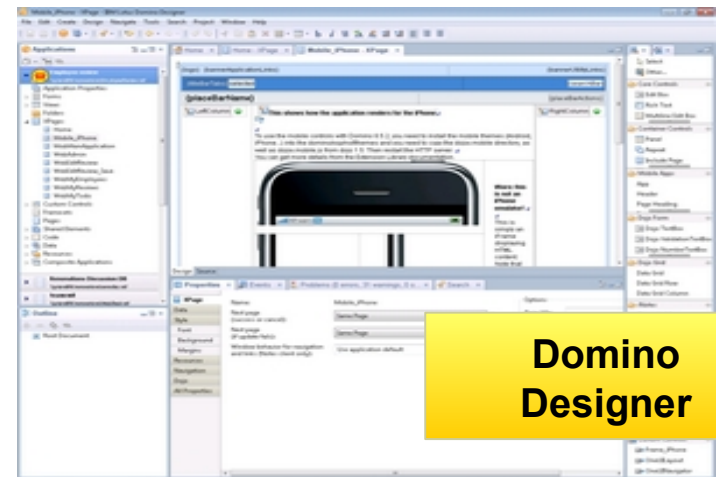
Integration capabilities

Fast-start options for Social Business developers

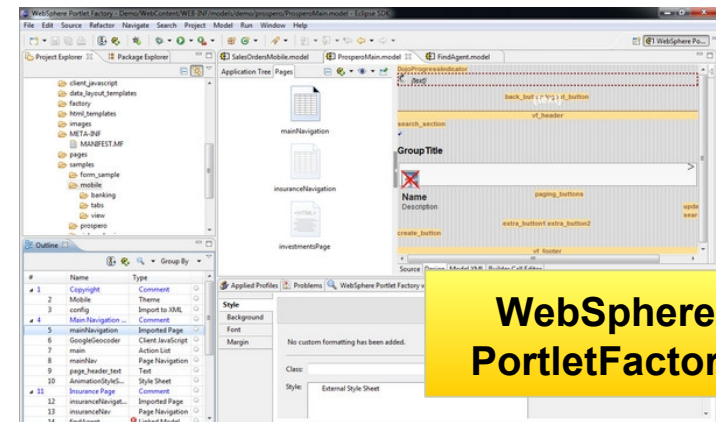
Ready to use appliances in the cloud for developers

Attractive licensing for developers

Vibrant community engagement



Domino Designer



WebSphere PortletFactory



Technical strategy

Extend existing platforms with social capabilities

Simplify the stack, emphasizing a focused set of common technologies across IBM and third-party capabilities

Make it easy for (lots of) developers to build Social Business applications – improve developer productivity and increase skills availability for our customers

An evolutionary strategy creates many opportunities for developers

Enhance existing applications with new capabilities without rewriting

Create entirely new applications with existing skills and technology investments

Start the journey today with current IBM products



Technical strategy

Lead the industry with open standards for Social Business

A commitment to drive and leverage open web standards

Maximize choice, agility, and ease of integration

Drive enterprise innovation and leverage rapid innovation on the web

Minimize incremental cost of targeting additional desktop and mobile platforms

Leverage dominant skillsets based around web technologies

Enabling the next generation of socially-enabled solutions on customers' existing investments and heterogeneous infrastructures

A runtime-agnostic approach allows you to use established runtime technologies: Java, Domino, etc.

HTML5



ARIA



Atom



SAML





Agenda

Directions for application development

The IBM Social Business Framework

Product updates



The IBM Social Business Framework

Services and Support

Solutions

IBM Social Business Toolkit APIs

IBM Value-Added Modules

Partner Value-Added Modules

IBM Social Business Core Modules



IBM Social Business Framework

Services and Support

IBM Business Partners	Global Technology Services	Global Business Services	IBM Lab Software Services	Enterprise Software Support
-----------------------	----------------------------	--------------------------	---------------------------	-----------------------------

Solutions

Customer experience	Research and development	Human capital management	Sales force automation	Partner collaboration	Supply chain management	Operations
---------------------	--------------------------	--------------------------	------------------------	-----------------------	-------------------------	------------

IBM Social Business Toolkit APIs

IBM Value-added Modules

Commerce	Business analytics	Enterprise content mgmt.
Social analytics	Business Process mgmt.	Application integration

Partner Value-added Modules

Public social networks	Rich media	Social applications
Archiving	Compliance & discovery	Gaming

IBM Social Business Core Modules

Profiles	Communities	Presence, chat & telephony	Messaging & PIM	Workflow & forms	Portal
Social collab. services	Microblogging	Meetings & audio/video	Document management	Mobile	Connectors



Introducing the IBM Social Business Toolkit



IBM Social Business Toolkit APIs

Brings together a set of strategic social APIs to simplify development

APIs for Connections, Sametime, Domino, Quickr, etc. services with new cross-product capabilities coming soon

Runtime enablement in Lotus Domino, WebSphere Portal, Lotus Connections, and LotusLive as well as mobile runtime support

Tooling support for Web, Domino and Java developers

Leverages technology consistency in IBM products

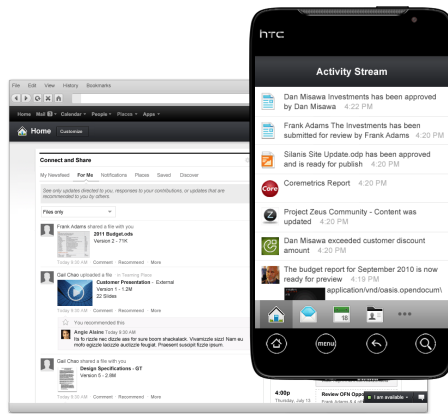
APIs based on web patterns including JSON, ATOM, REST

Runtime technologies such as OSGi, Dojo, HTML

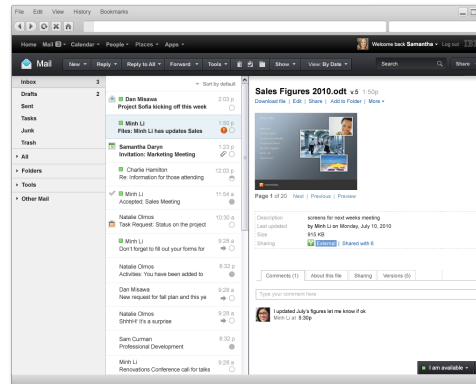
Tooling based on Eclipse



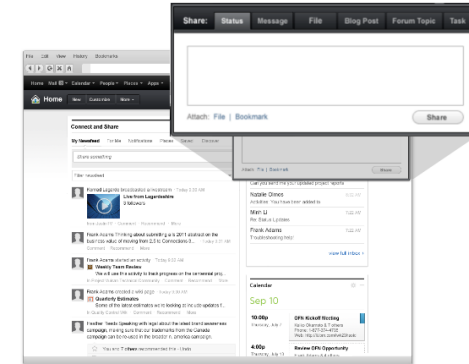
Coming soon: New unified APIs for the IBM Social Business Toolkit



Activity Streams



Embedded Experiences



Share Box

New APIs and services designed to help developers build **unified user experiences** and **consistent extensibility** independent of product, delivery model (cloud, on-premises), and client type (desktop client, browser, mobile)

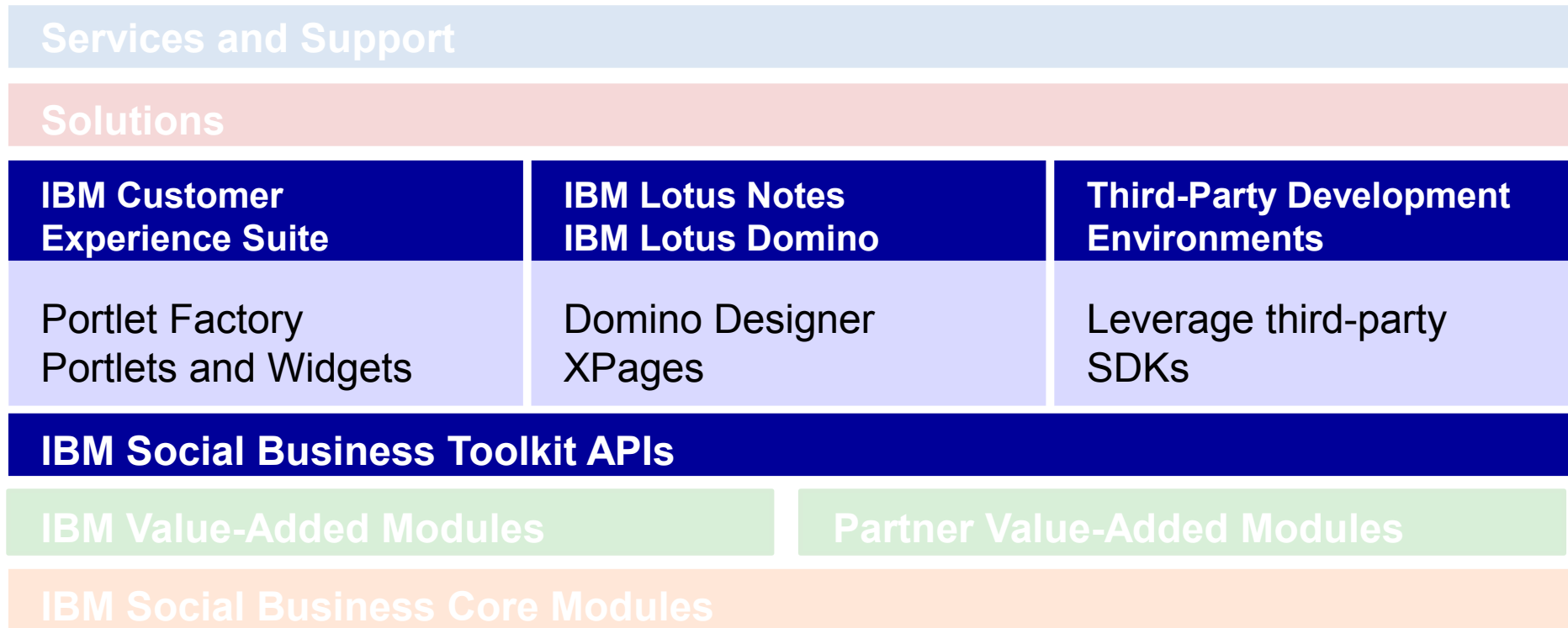
Activity Streams API available for developer use starting today on Greenhouse

First GA releases planned for Connections Next, Notes Next...



Accelerated development

Supporting the tools you already use





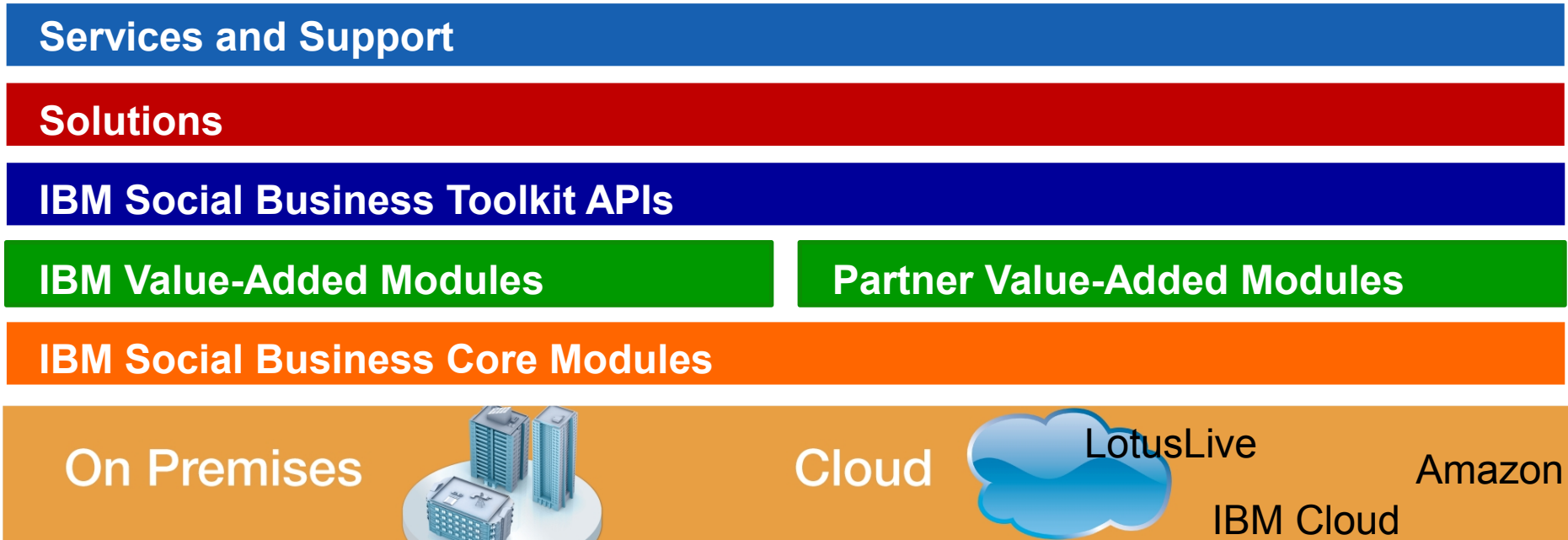
Convergence

IBM's strategy is to deliver a consistent set of Social Business capabilities and APIs for deployment on premises and in the cloud

Single focus of development investments

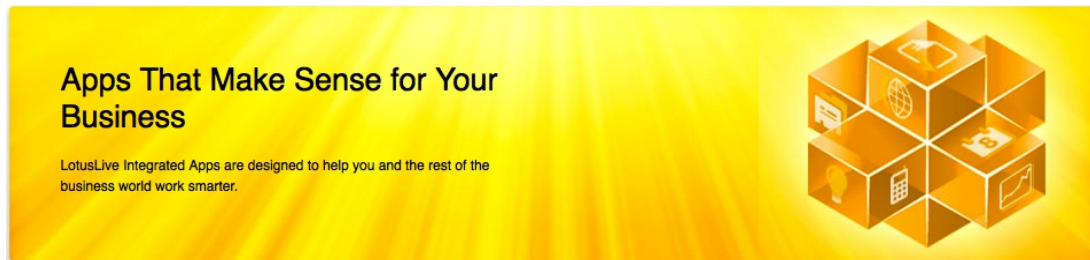
Flexibility of deployment options

Hybrid scenarios





LotusLive Partner Integration



An integration platform for SaaS-based collaboration

Strong focus on building an ecosystem of partners

Designed to integrate with other cloud services and on-premises applications

Inbound integration: Consume LotusLive services in another application

E.g., in SugarCRM, Ariba, Salesforce.com, etc.

Outbound integration: Deliver your application or service to LotusLive users

E.g., Leverage eXpresso, Tungle, Vondle Live, Silanis, Skype services within LotusLive collaboration UI

Signup for use of the platform planned to be available to Advanced and above IBM Partners in Q2 2011

Dev and Test environment: An instance of LotusLive that partners can access and start development

API Explorer: Allows partners to test APIs



The Social Business Toolkit in action

Production ready! Use it today at <http://www.lsonline.info>

Mobile Enabled

Social collaboration

Messaging and PIM

Unified Communications

Custom XPages Home Page and Agenda



The Social Business Toolkit in action

Production ready! Use it today at <http://www.lsonline.info>

Solution

Lotusphere Online

Enables Lotusphere attendees to browse session, manage their time, communicate and collaborate

IBM Social Business Toolkit APIs

IBM Social Business Core Modules

Social collaboration
Lotus Connections

Unified communications
Lotus Sametime

Messaging and PIM
Lotus iNotes

Workflow and forms
Lotus Domino

The Social Business Toolkit in action

Insurance Agency Portal

- Search and find an agent and see agency-specific Connections blogs
- Set up Connections profiles
- Join Communities of interest (flood preparedness, money management, student drivers)
- See social content in the context of related web content, related insurance claim forms, quotes and more



The Social Business Toolkit in action

Insurance Agency Portal

Solution

Insurance agent portal
 Enables efficient vendor-agent and agent-customer engagement

IBM Social Business Toolkit APIs

IBM Value-Added Modules

Enterprise content management
IBM Filenet

Web analytics
IBM Coremetrics

Partner Value-Added Modules

IBM Social Business Core Modules

Social collaboration
Lotus Connections

Unified communications
Lotus Sametime

Portal
WebSphere Portal

Web content
IBM Web Content Manager

Workflow and forms
IBM Forms



Agenda

Directions for application development

The IBM Social Business Framework

Product updates



Lotus Domino + XPages + Domino Designer

The RADD platform for developing collaborative workflow applications

Seamless integration with Social Business services

Access to Connections through REST services and single sign-on

Easy integration planned with the new Social Business Toolkit APIs

Supports key standards: Dojo, OSGi, etc.

A production-proven, performant, NoSQL store!

The XPages Extension Library on openNTF provides **unmatched productivity** for writing “OneUI”, standards-based, socially-enabled applications

Future directions

New Web 2.0 templates (Teamroom, etc.) now available on openNTF

Plan to provide an OpenSocial container, participate in embedded experiences, and generate gadgets out of XPages (Domino Next)

Plan to provide data access through REST services, including calendaring and other higher level services (Domino Next)



Application Development Community

OpenNTF is an open source community dedicated to the development of Lotus Notes/Domino applications

Catalog of applications & other code assets

Download and use or try it on-line

Strong development community

60,000 registered users

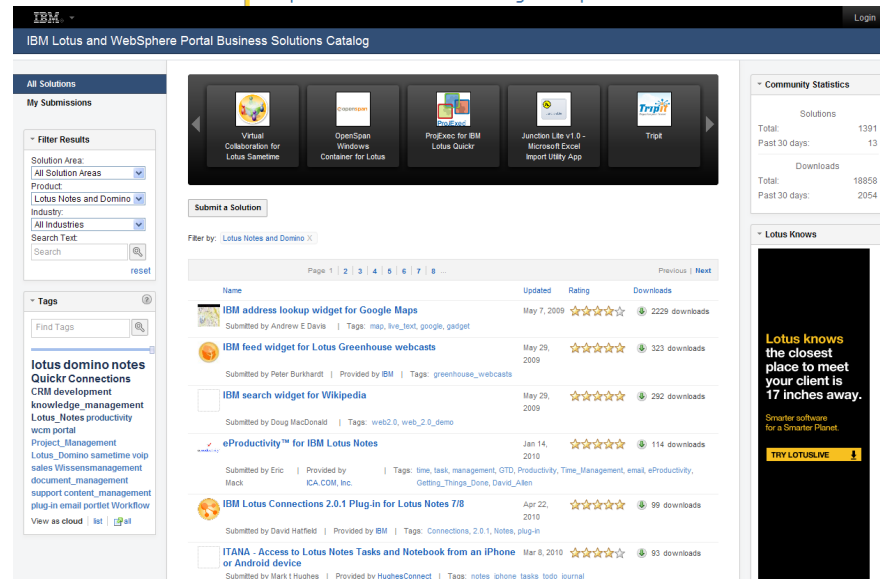
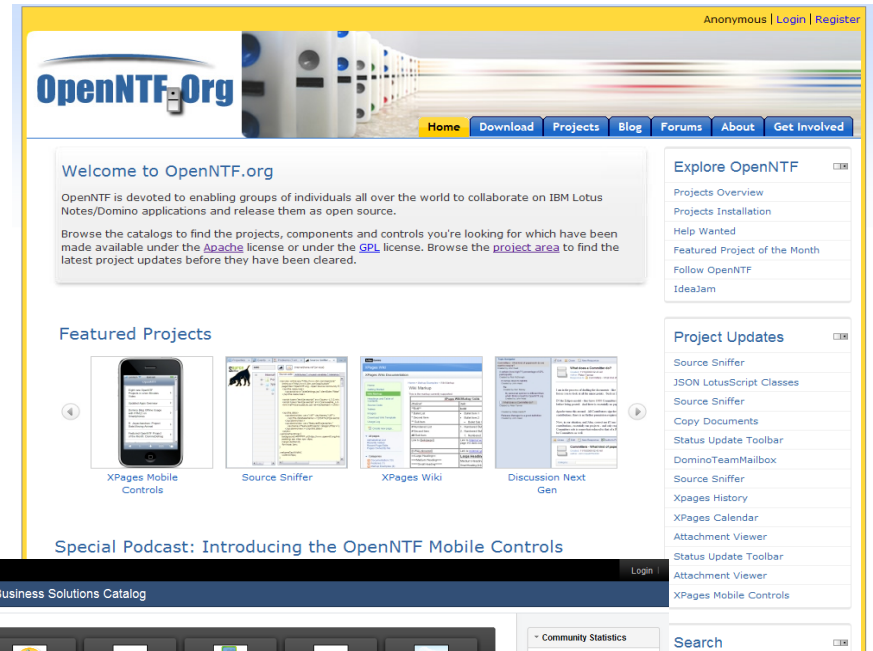
10,000 downloads/month

Business Solutions Catalog

Commercial “out of the box” capabilities

From widgets/plugins to full applications

catalog.lotus.com





Lotus Connections



Home page



Profiles



Communities



Blogs



Files



Activities



Wikis



Bookmarks

State-of-the-art social networking and collaboration system for business users, inside and outside the firewall

Complete set of REST APIs that enable you to integrate custom data, add widgets and services, interact with social networking services over HTTP

Connections 3 introduced CMIS support for Files, and an SPI for integrating Connections events with third-party compliance and auditing tools

First GA version of the extensible activity stream service for the IBM Social Business Toolkit planned for Connections Next



Lotus Sametime

Sametime has evolved into a powerful unified communications platform

Provides a wide range of front-end and back-end APIs

Since Sametime 8.5, the Sametime Proxy Toolkit enables presence over HTTP, high-quality customizable UI for presence and chat

Plan to provide update to the Proxy Toolkit in 8.5.x for improved accuracy, resolve issues

Plan to provide new API in Sametime 8.5.x for capturing and logging meeting activity

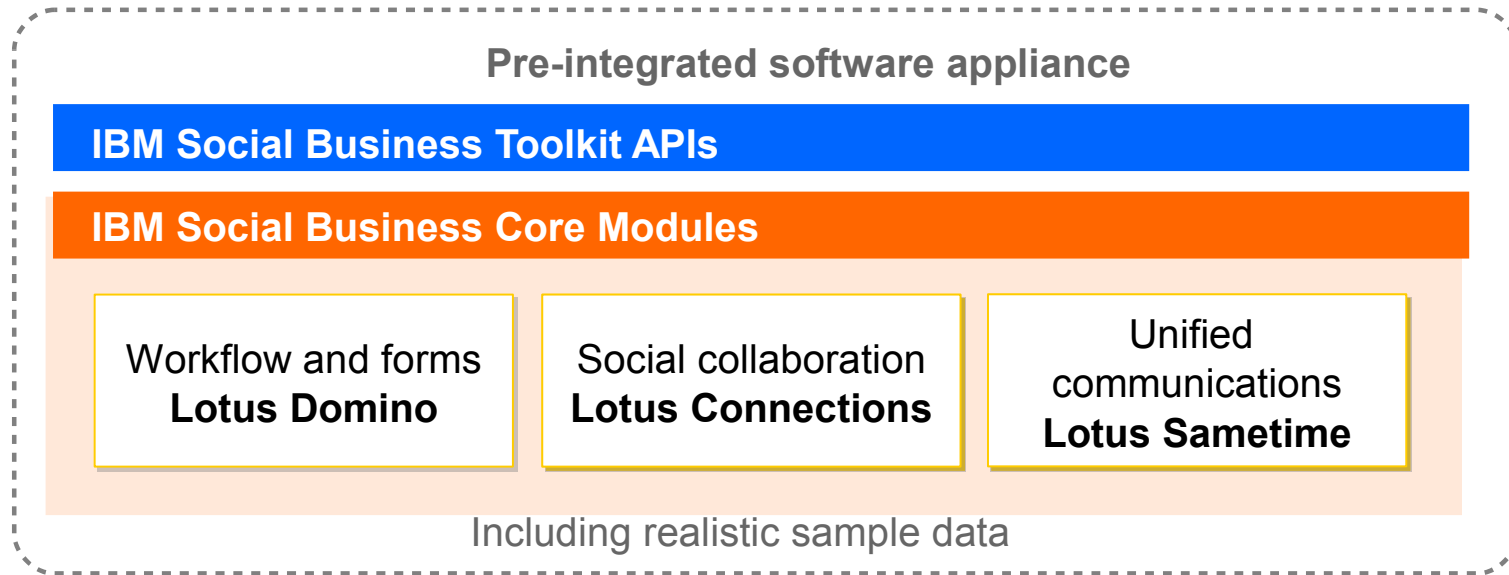
The screenshot shows the Lotus Sametime interface. On the left is a buddy list with a search bar and a menu (File, Tools, Help). The buddy list includes names like Amy Blanks, Betty Zechman, and others. A context menu is open over 'Amy Blanks', showing options: Start chat, Call, Rename, and Delete. A yellow highlight is over the 'Amy Blanks' name in the list, with the code `<div dojoType="sametime.LiveName"></div>` next to it. A business card overlay is shown for Amy Blanks, displaying her profile picture, name, title 'Renovations - Sales Representative', phone number '555-4545 / New York, NY, US', and availability status 'I am available @ Office (Sametime 7.5.1)'. The business card also lists her email 'ablanks@us.renovations.com', another phone number '555-4545 / 617-555-4545', and address '63 Main Street, New York, NY, 12304, United States'. A yellow highlight is over the business card overlay, with the code `<div dojoType="sametime.BusinessCard"></div>` next to it.

`<div dojoType="sametime.BuddyList"></div>`



Social Business Appliance for Developers

Coming soon!





WebSphere Portlet Factory

Dramatically simplifies and supercharges the development, deployment, maintenance and reuse of multichannel applications that deliver exceptional experiences

Key directions for 2011

Mobile

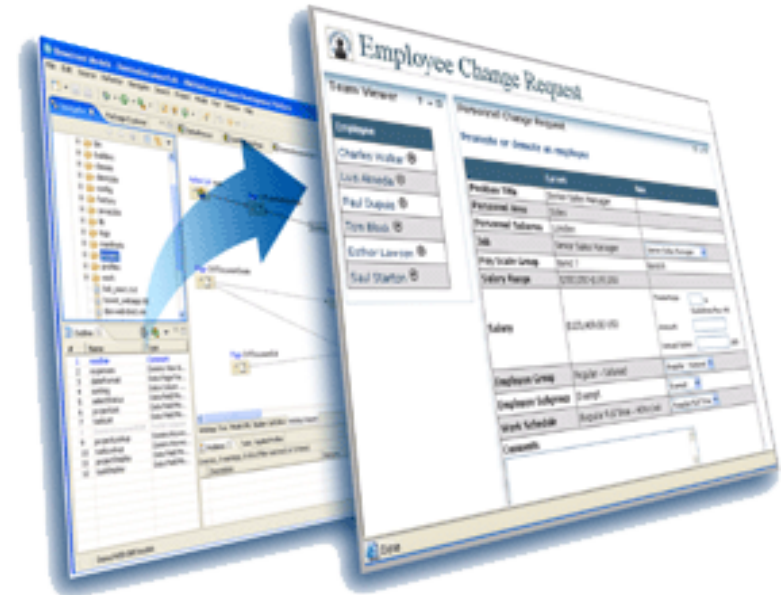
Builders, tools and sample apps for Android, iPhone, iPad, Blackberry (In Beta Q1)

Social

New portlets and builders speed integration of Lotus Connections within WebSphere Portal

Accelerated development

Growing Catalog of Extensible Solution Assets: Reusable component assets and whole templates that provide common application and integration patterns in horizontal and industry uses



Write an application once, deploy to a Browser, Tablet, Smart Phone, Kiosk, and more



IBM Forms

A forms-based human interface for business process automation and SOA that integrates well with IBM BPM and Portal technologies, supporting rapid application development and standards-based b2b solutions

Forms 4.0 delivers more compelling user experiences through a modern Web 2.0 interface without the expense of custom code

IBM Project Nitro (in open beta now) planned to provide application-centric forms solution supporting Interactive, dynamic UI comprising entire transaction, with data and process-centric records (rather than document-centric)





Enabling the community

DeveloperWorks

<http://www.ibm.com/developerworks/>

<http://www.ibm.com/developerworks/lotus/community/wikis.html>

Greenhouse

<https://greenhouse.lotus.com>

openNTF.org

<http://www.openntf.org>

xpages.info

<http://xpages.info/XPagesHome.nsf/Home.xsp>

Videos – Youtube, VideoFest...

<https://greenhouse.lotus.com/wikis/home?>

[lang=en#/wiki/W6696b8ac7465_4a5f_9327_94f1a5d82132/page/VideoFest](https://greenhouse.lotus.com/wikis/home?lang=en#/wiki/W6696b8ac7465_4a5f_9327_94f1a5d82132/page/VideoFest)

Resources also provided by the community

<http://xpages.tv/>, <http://xpagesblog.com/>...



Next steps for Notes/Domino developers

Learn to use XPages

It is the strategic direction for N/D application development

Start from <http://xpages.info>

Download ready-to-use libraries and components from openNTF.org

XPages Extension Library, Mobile controls, Connections components...

Invest into the new technology trends

HTML5, CSS

Mobile platforms

JavaScript, Dojo

Gadgets, iWidgets, OpenSocial

Start to use Java pervasively

XPages business logic, agents...

Discover the power and flexibility of OSGi

Java tasklets from openNTF, XPages Extensibility API

Use Domino in the context of the broader Social Business Framework

Make your applications social!



Next steps for Portal developers

Integrate Connections in the Context of a Portal Application

With growing catalog of Connections Portlets and customizable Portlet Factory code

Move “Up the Stack”

New integration components and templates for common usage patterns available from Greenhouse Solutions Catalog

Ready-to-deploy WAR files plus customizable Portlet Factory models

Customizable Industry and horizontal templates and web content

Get Mobile

Portlet Factory 7.01 beta available this quarter

New smart phone builders and samples look like native smart phone or tablet applications

Build once, deploy anywhere

Test Drive New Web Based Tooling

Well-suited to front-end process driven applications

Available now in IBM Forms 4.05 open beta – IBM Project “Nitro”

Leverage Sandboxes in the Cloud

Amazon EC2 and IBM Smart Business cloud images for Portal, WCM, Forms, Mashups



Actually, I'm just an innocent web developer...

Where do I start?

Integrate social capabilities

HTML Widget examples

Liven any name or email address with Sametime Web widgets

Add a hover Business Card with Connections Widgets

RESTful API examples

Create Activities from any action or workflow event

Post Status updates to the Microblog

Test drive our images on the Cloud

Business Partners have no-charge access to “Developer Use” images on Amazon and IBM Clouds (machine time charges still apply)

Coming Soon: a fully integrated Social Business appliance image for developers

Pre-configured and pre-populated with sample data

Explore the Social Business Toolkit

Will become the single entry point for developers to get started

Access and links to existing APIs and toolkits

Showcase of new Social Business APIs

Activity Streams (available now) and Share Box (coming next)



Summary

Social Business applications build on our heritage...

...*but* Social Business today demands new types of applications

Beyond the firewall

Systems of systems

Both Cloud and on-premises

The IBM Social Business Framework enables IBM customers and partners to capitalize on Social Business opportunities

All IBM collaboration products are part of the framework

Big opportunities for general web developers and established Lotus developers, building on their existing skills

The new IBM Social Business Toolkit are planned to enable a new class of unified social capabilities based on the latest born-on-the web open standards

Consistent extensibility across products, deployment models and user experiences

Easy to get started with today's products and cloud developer options



Questions?