



 **IBM SOA ARCHITECT SUMMIT**  
**LE 22 MAI 2008**

# Monitoring and extending your SAP function through BPM

Alexandre Signoret, SAP & Oracle Initiatives, South Europe,  
alex.signoret@fr.ibm.com +33 6 84 95 30 98

Andy Gibbs - WW SAP Initiatives Team Program Manager  
agibbs@uk.ibm.com

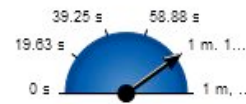
# Business Monitor for SAP

## KPIs

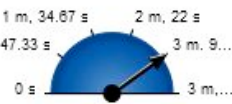
Average net value of orders



Average time from inquiry to offer

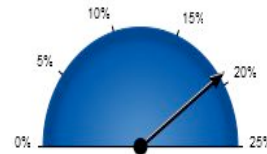


Average time from offer to order

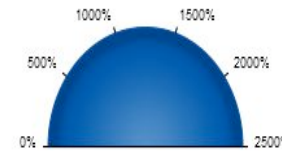


## KPIs

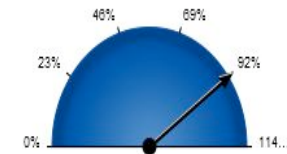
First Degree Liquidity



Return On Equity



Second Degree Liquidity



KPI Name	Status	Value	Target	Value in Range
Capital Stock				
Gross Revenue		-2,742,269.7		
Liquid Assets		101,000		
Net Profit Or Loss		-11,828,040.19		
Sales Revenues		-2,658,169.9400000004		
Staff Costs				
Total Current Assets		8,701,024.11		
Total Current Liabilities		-525,273		
Total Inventory		9,183,062.49		

KPI Name	Status	Value	Target	Value in Range
Average absence days		3.5	10	
Average available vacation days		33		
Average employee age		37.5		
Average employment time		0.1		
Average taken vacation days		1		
Average working hours per week		30		
Fluctuation of employees in current year				
Number of leavings in current year				
Overtime per employee		8		
Total number of employees		2		
Total overtime		16		

## Instances

Model: SalesOrder Version: All Versions Monitoring Context: Payment MC

Pass Values

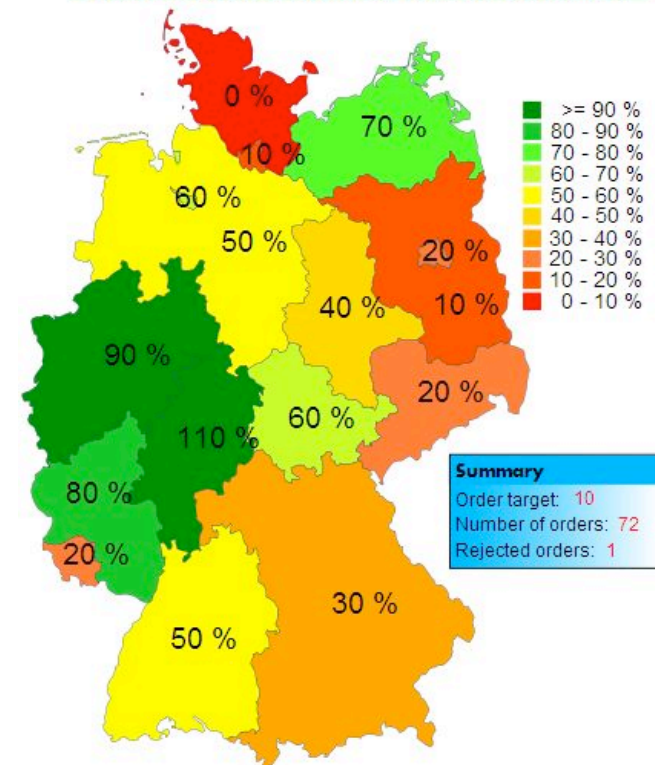
Search for:

<input type="checkbox"/>	COMPLETED <input type="checkbox"/>	Billing ID <input type="checkbox"/>	Bill payment datetime <input type="checkbox"/>	Requested Payment Date <input type="checkbox"/>	Bill paid <input type="checkbox"/>	Bill paid in time? <input type="checkbox"/>	Net Value <input type="checkbox"/>	Cash Discount In Percent <input type="checkbox"/>	Amount Eligible For Cash Discount <input type="checkbox"/>	Net Value Regarding Cash Discount <input type="checkbox"/>
<input type="checkbox"/>	★	100001000000222008	January 29, 2008 11:45:32 AM	March 16, 2008	true	true		3.0	€23.20	
<input type="checkbox"/>	★	100001000000232008	January 29, 2008 11:55:43 AM	March 16, 2008	true	true	€23.20	3.0	€23.20	€22.50
<input type="checkbox"/>	★	100001000000272008	January 31, 2008 3:55:39 PM	March 16, 2008	true	true	€3,248,000.00	3.0	€3,248,000.00	€3,150,560.00

# Sales and Distribution Demo

- Monitor events across the lifecycle of product orders
- From customers inquiries through offers, orders, shipping, billing, to payment and claims
- Provides a role based dashboard for the SD Manager
- Show Alerts for the SD Manager
- Show current target order achievement levels graphically on geographical map of Germany.

Order target achievement per federal state



DEMO

## WebSphere Business Monitor, Anticipate and Act *Real-time visibility and actionable insight into processes*

- Monitor KPIs, business situations, process information, events and activities in real-time
- Monitor end to end processes across your heterogeneous application landscape
- Build personalized role based business dashboards
- Receive business events and alerts on various devices



WebSphere Business Monitor



Application packs for SAP – sample event monitors for HR, FI, CRM, SD

# WebSphere Business Monitor - Receive Business Activity Information from Multiple Sources

Gain access to more events and data to make KPIs and dashboards a more comprehensive representation of business performance

## Sources of Events

Workflow or process management such as:

- WebSphere Business Services Fabric
- WebSphere Process Server
- WebSphere MQ Workflow
- IBM FileNet P8

Connectivity software such as:

- WebSphere Business Events,
- WebSphere ESB,
- WebSphere Message Broker,
- WebSphere Partner Gateway,
- DataPower XI50

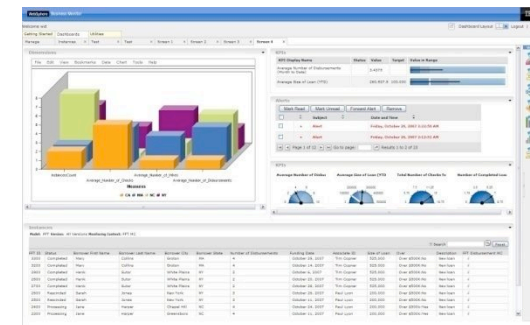
SAP, Siebel CRM & other software through Adapters & WebSphere ESB

Third party or legacy applications



WebSphere Business Monitor Server

- Event capture and processing
- KPI calculation



WebSphere Business Monitor

- Dashboards for visibility
- Situation detection and ability to take action



## SOA enabled BPM extends SAP

- Immediate extension of SAP with Choreography of SAP services, Human Interaction, and rules engine, portal
- Enables process abstraction and separation from business logic in SAP apps.
- 'Separation' isolates the BPM layer from the impacts of periodic upgrade of SAP apps or differences in customized functionality of multiple SAP instances.
- leverage SAP functions that span across various modules in SAP R/3, and/or SAP apps, such as ERP (R/3), CRM, SCM, SRM, PLM, etc. Leverage 'services' from non-SAP Apps.

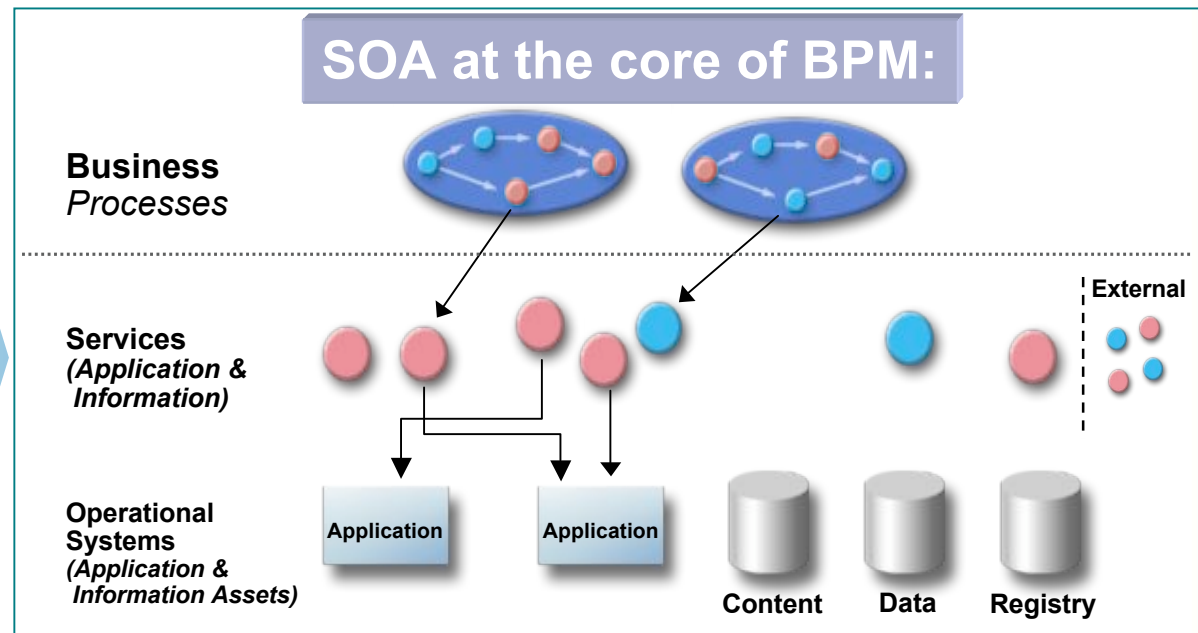
DEMO

The screenshot displays the SAPGUI - VFB interface for 'Create Standard Order: Overview'. The interface includes a navigation bar with 'Launch', 'Welcome', and 'SAP Backend'. Below the navigation bar, there are several input fields and buttons. The 'Standard Order' field is empty, and the 'Net value' field shows '0.00'. The 'Sold-to party' and 'Ship-to party' fields both contain 'T-S66A01'. The 'PO Number' field contains 'Customer\_SalesOrder\_001' and the 'PO date' field is empty. The interface also features a 'Menu' dropdown, 'Save', 'Back', 'Cancel', 'Tools', 'Propose items', and 'Display sales sum' buttons. At the bottom, there are tabs for 'Sales', 'Item overview', 'Item detail', 'Ordering party', 'Procurement', 'Shipping', and 'Reason for rejection'. The 'Sales' tab is active, showing fields for 'Req. deliv date' (13.03.2008), 'Deliver Plant', 'Complete div.' (checkbox), 'Total Weight' (0.000), 'Delivery block', 'Volume' (0.000), 'Billing block', 'Pricing date' (04.03.2008), 'Payment card', 'Exp. date', 'Payment terms', 'Inco terms', 'Order reason', and 'Sales area' (1000 / 10 / 00 Germany Frankfurt, Final customer sales, Cross-division).

## Convergence of SOA and BPM – SOA enabled BPM

- SOA improves how you design, manage, and optimize your business processes by enabling:
  - Reuse of existing assets (service enabling current IT systems)
  - Process abstraction (process independency from IT system business logic)
  - Flexibility in change (either processes or IT services can be independently changed)
  - Solution building efficiency (tools and methodologies for rapid dev & deployment)

SOA  
enabled  
BPM



## CE/GP is interim BPM solution

### SAP NETWEAVER COMPOSITION ENVIRONMENT 7.1



#### Fast innovation without disruption

- Model-driven development
- Leveraging the stability and continuous innovation of the business process platform

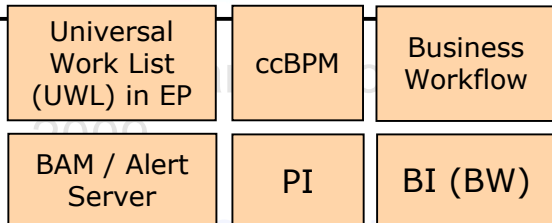
#### Enterprise scale composite apps

- Comprehensive lifecycle management across stack
- Open standards based

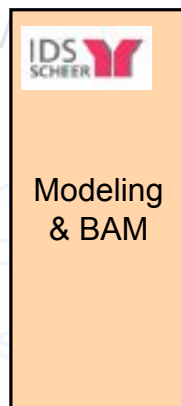
#### Robust, reliable development platform

- Java EE 5 application server
- Eclipse based modeling and development environment

Available to customers today



Additional SAP Tools required outside NW CE v7.x



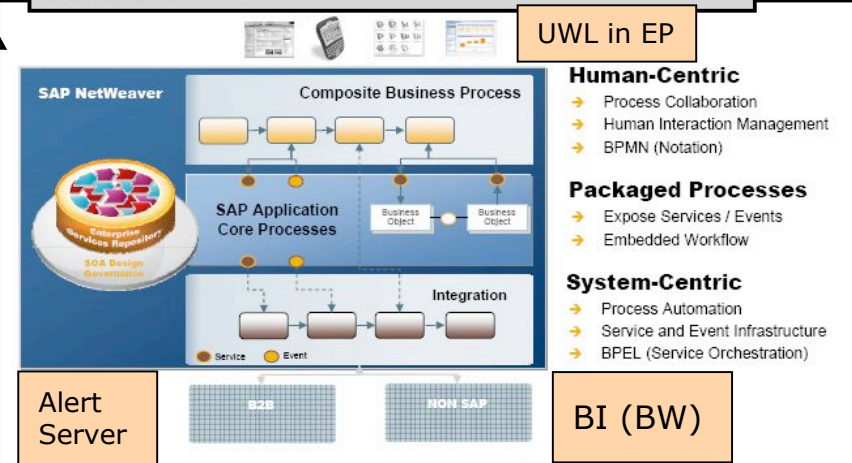
## Galaxy - SAP's New BPM Offering

- GA Planned in 2H 2008
- Ramp-up (beta) release Q1, 2008

Source: SAP Announcement at TechEd 2007, Las Vegas

## Planned BPM Offering - Galaxy, 09

### Business Process Management on a Business Process Platform



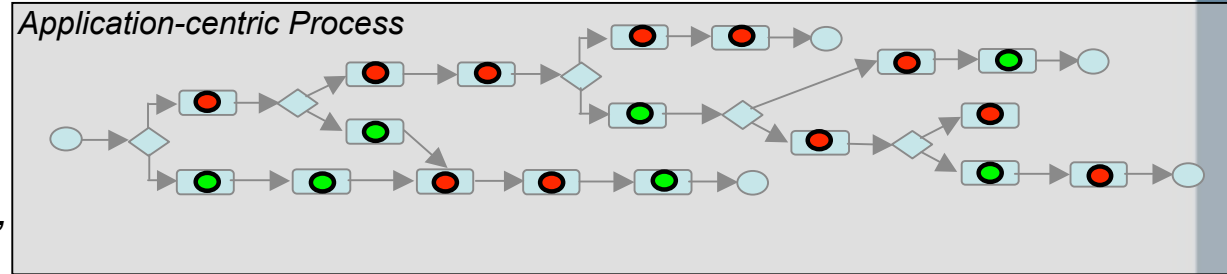
– Enterprise Service Registry (ESR) delivers now. WebSphere delivers now. Registry to support run-time discovery of Enterprise Services (ES)



# BPM Capability - SAP Approach, IBM Approach

## 1. Traditional ERP Approach

SAP processes use embedded business logic inside its application modules (ERP, CRM, SCM, etc).



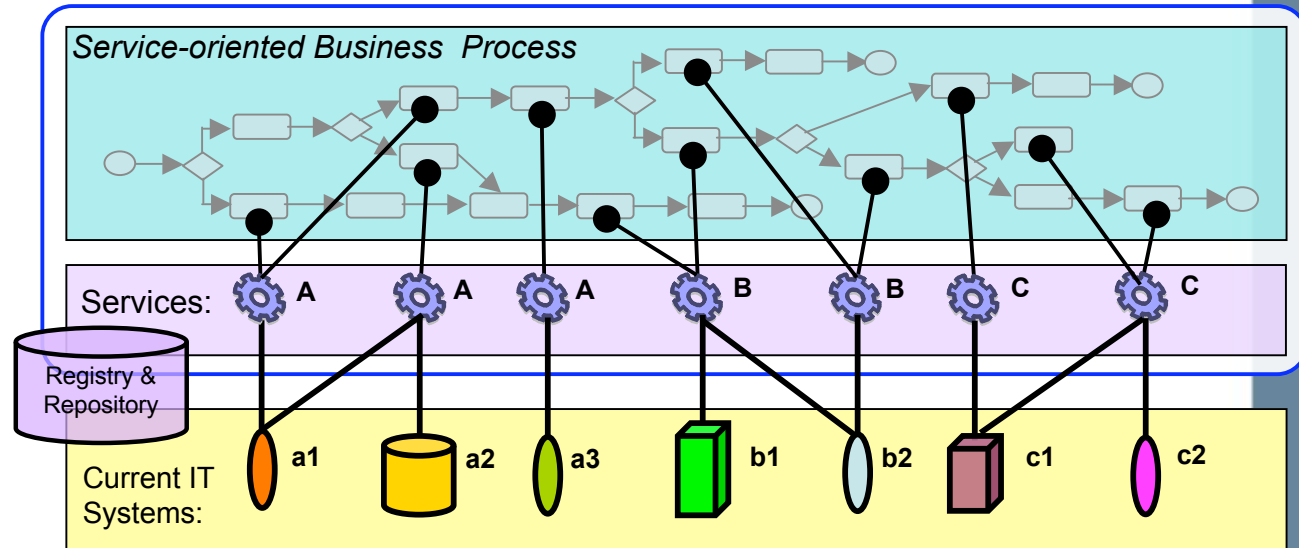
● Transactions with embedded business logic are hard wired to form business processes.

● SAP Transactions

● Non-SAP Transactions, performed by user in those systems

## 2. SOA-enabled BPM:

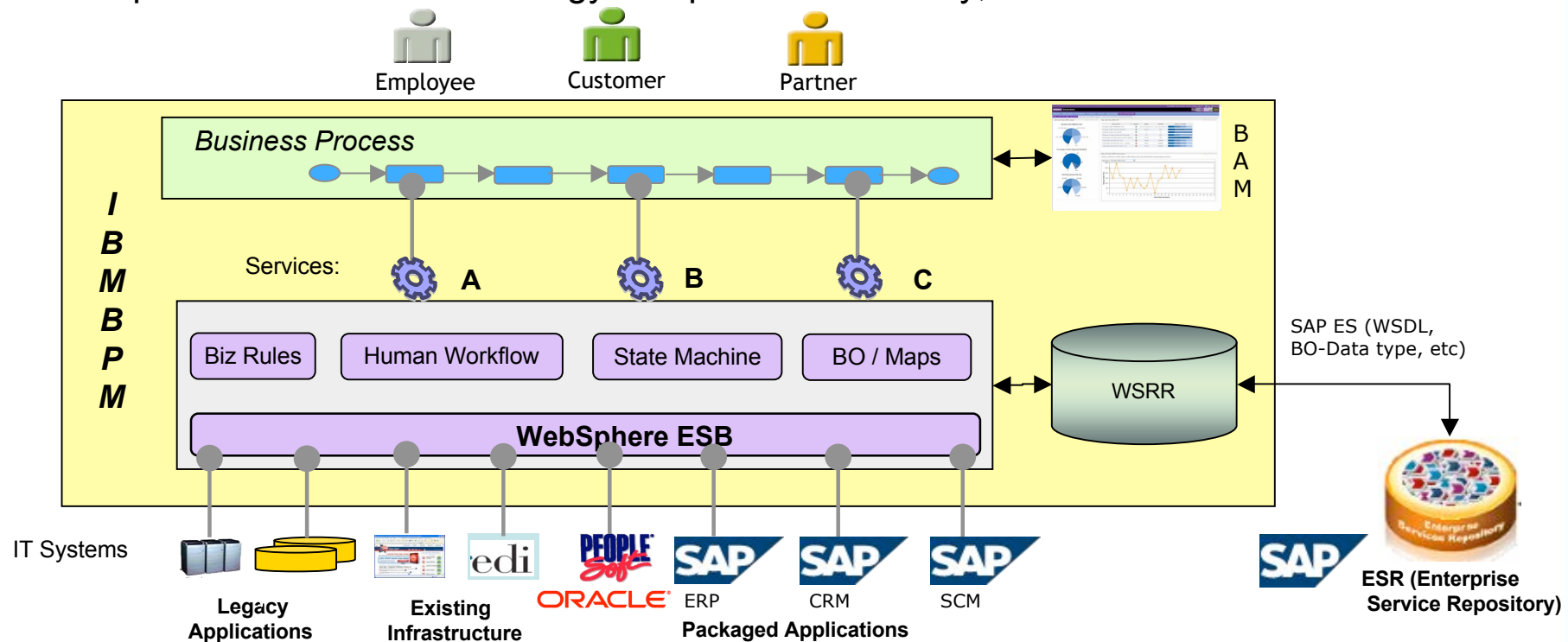
WebSphere Process Server's integrated run-time provides Process engine, BAM, ESB, and Connectivity to mediate & virtualize 'loosely-coupled' services from existing heterogeneous IT systems.



⚙ Exposed service encapsulates business logic that resides in IT systems, which are service-enabled

## IBM BPM Adoption Strategy

- Build 'Services' by leveraging SAP provided Enterprise Services (ES) harvested through WSRR and SAP ESR integration.
- Build 'process abstraction' with generic business processes that use SAP provided ES and 'Services' from non-SAP systems via ESB mediation and data transformation.
- Leverage key BPM functions, such as 'human workflow', 'business rule support', 'process, activity & event monitoring' capabilities.
- Adopt a business and IT strategy that provides flexibility, and ensures 'No Vendor Lock-in'



## Contacts

Alexandre Signoret - SAP & Oracle Initiatives, South-West Europe,  
[alex.signoret@fr.ibm.com](mailto:alex.signoret@fr.ibm.com), +33 6 84 95 30 98

Alex Ohanian – BPM Sales leader France,  
[alex.ohanian@fr.ibm.com](mailto:alex.ohanian@fr.ibm.com), + 33 6 8453 3380

Jean Baptiste Francois – BPM Sales, France  
[jean-baptiste.francois@fr.ibm.com](mailto:jean-baptiste.francois@fr.ibm.com), +33 6 7367 0721

Teofilo Redondo Pastor – South West SAP Initiatives Technical leader,  
[TEO\\_REDONDO@es.ibm.com](mailto:TEO_REDONDO@es.ibm.com) + 34 63 9273270

Andy Gibbs - WW SAP Initiatives Team Program Manager  
[agibbs@uk.ibm.com](mailto:agibbs@uk.ibm.com)