



# IBM Lotus ActiveInsight, Version 6.0

## Highlights

- **Drive alignment around a common, visible set of performance goals**
- **Automate today's manual or resource-intensive processes with personalized, graphical user interfaces tailored to each job role**
- **Gain access to performance information wherever it resides with integrated, real-time views**
- **Take action through intuitive views that enable proactive response to issues via IBM WebSphere Portal software's rich collaboration and workflow**
- **Help cut costs using rapid assembly tools that can dramatically cut the time and skills required to build dashboards**

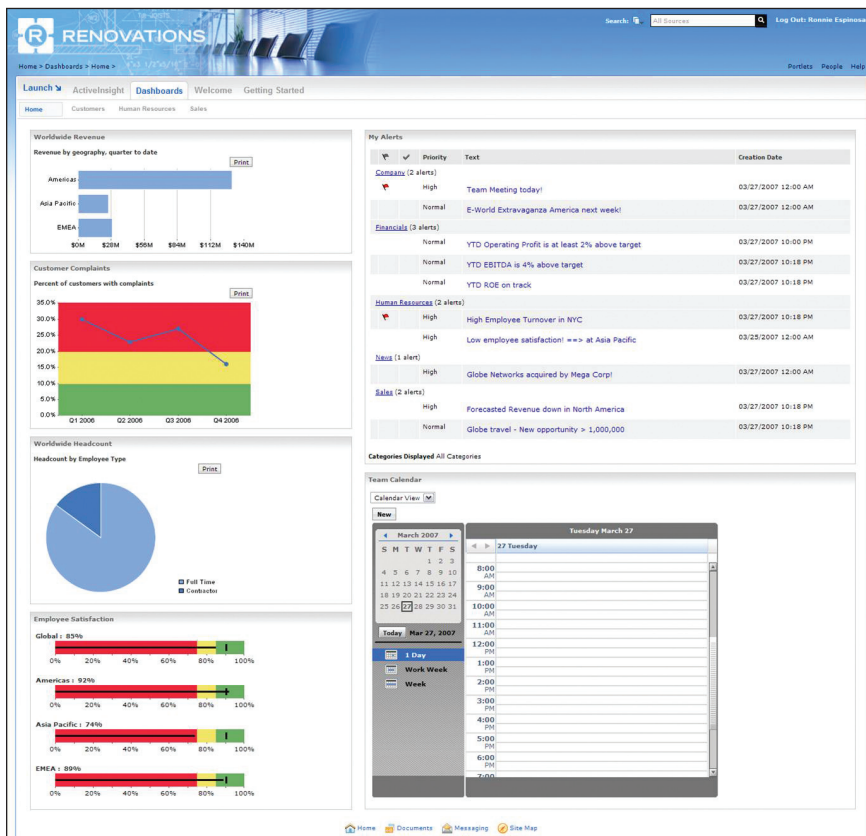
## Better align key performance metrics and employees with overall goals

Every organization has goals and objectives that are strategically important for success. To reach these goals, the workforce must fully understand these performance targets, strategies and objectives. The targets must then be carefully measured and monitored—giving insight into areas that need to be revised or managed more closely.

With IBM Lotus® ActiveInsight™, Version 6.0 software, organizations can gain a comprehensive view of mission-critical or operational information from a single interface. Lotus ActiveInsight software combines industry-leading portal, dashboard, collaboration and application integration capabilities. With Lotus ActiveInsight software, your entire organization can see who is making what move, when—and how each move impacts performance against goals.

## Performance dashboards based on an industry-leading portal platform

Because Lotus ActiveInsight software is deployed with IBM WebSphere® Portal software, it is a scalable, flexible performance management solution.



Access instant alerts and key performance indicators around the clock to closely monitor performance issues and opportunities.

## What's new in Version 6.0

- **Turnkey bundle of dashboards and scorecards.** Enables you to experience the most effective way to link organizational objectives with relevant business information.
- **Enhanced collaborative capabilities.** Include support for annotations and a new team calendar.
- **New and enhanced dashboard builders.** Automate the creation of maps, bullet graphs, a status indicator legend and contextual information; enhanced spreadsheet import process and alert creation.
- **Expanded platform coverage.** Supports WebSphere Portal 6 software, and the scorecard portion of the product also supports IBM AIX® and Linux® operating systems.
- **Extended portal software support.** Adds support for the new IBM WebSphere Portal Express 6 release.
- **Expanded globalization coverage.** Support for 23 languages (see supported languages in “at a glance” chart).

It leverages powerful native portal extensions so you can aggregate data, processes and services from multiple, disparate sources, while boosting operational efficiency. And it enables you to meet the needs of your employees, customers and business associates more effectively with access to portal services, enterprise search functions and Web site visitor and usage analyses.

### Help cut the time and cost to deploy and manage performance dashboards

Your IT staff has plenty to do. So why not give them the time and freedom they need to focus on activities that generate greater business value? With Lotus ActiveInsight software, you gain intuitive developer tools, such as rapid application development (RAD) tooling with XML, that enable nontechnical users to customize and manage their environments. And access back-end data more easily using Web services capabilities. Plus, Lotus ActiveInsight software provides the ability to:

- *Import data from Microsoft® Excel spreadsheets manually or use a service-oriented architecture (SOA) Web service implementation to automatically import data.*
- *Use Web services to create registered data sources so multiple employees can update scorecards and dashboards, as well as pass data from existing dashboard portlets to their scorecards.*

- *Continue to benefit from and build on your existing business intelligence solutions and portlets using portal-based dashboards.*
- *Utilize flexible administration features that allow you to create new perspectives (or categories of objectives), control resource access, connect to external data sources using SOA and Web 2.0 approaches, and modify the settings and labels that display for components.*
- *Generate unique variations for each user and role—on demand—without writing new code or creating additional variations.*
- *Access preexisting sample data to support a scenario, use in a demo environment or learn more about the product before or after installation.*

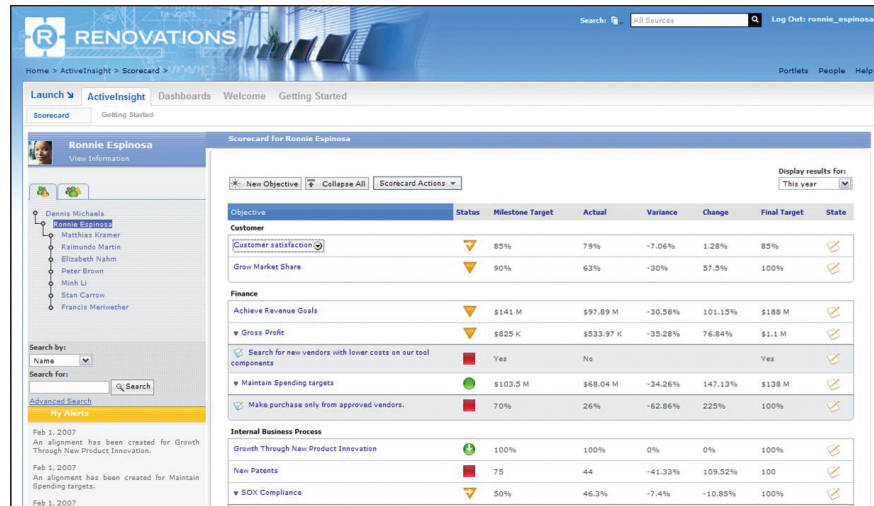
### IBM WebSphere Dashboard Framework software

Lotus ActiveInsight software simplifies and accelerates the dashboard development process using IBM WebSphere Dashboard Framework software. Based on an SOA approach, the dashboard tool provides administration capabilities, reusable components and access to various enterprise applications via Web services. Plus, nontechnical users are able to personalize and configure their dashboard portlets.

**View real-time business performance information—when and where you need to**

Observe your business operations—and overall performance—from a single, consistent interface. Lotus ActiveInsight software can help you gain deeper insight into the mission-critical information that impacts your entire organization. Versatile navigation capabilities provide users with access to status maps, graphs, reports and attachments—providing a visual representation of each objective's target value, history, fluctuations and status. And you gain prebuilt scorecards and dashboards that enable you to:

- *Manage, track and view strategic objectives and initiatives easily.*
- *Allow users to cascade objectives and interlink them with internal and external contributors' objectives.*
- *Resolve problems and exceptions quickly, within context and directly within the tool.*
- *Use key performance indicators to monitor progress.*
- *Provide users access to tailored information based on specific roles and preferences.*
- *Connect teams, information and applications using built-in collaboration capabilities such as e-mail, business chat and instant messaging.*



Use real-time scorecards to help boost employee accountability and enhance visibility into objectives, tasks and performance status.

**IBM Lotus ActiveInsight, Version 6.0 software requirements at a glance**

**Hardware**

- Two CPUs, Intel® Pentium® 4 processor, 3.0GHz
- 2GB RAM
- 10GB hard disk

**Supporting operating systems**

- Microsoft Windows® Server 2003 (Enterprise or Advanced)
- Microsoft Windows 2000 Advanced Server SP4
- IBM AIX V5.3
- SUSE Linux 9.x
- Red Hat Enterprise Linux Release 4

**Supported Web browsers**

- Microsoft Internet Explorer 6.0 and 7.0 with Macromedia Flash 7.0 support
- Mozilla Firefox 1.0.4 with Macromedia Flash 7.0 support

**Supported directories**

- IBM Tivoli® Directory Server, Version 5.2
- IBM Tivoli Directory Server, Version 5.1
- IBM Lotus Domino® Enterprise Server, Version 6.5.x
- Microsoft Windows Active Directory 2000

**Supported languages**

- Arabic
- Chinese, Simplified
- Chinese, Traditional
- Czech
- Danish
- Dutch
- English
- Finnish
- French
- German
- Greek
- Hebrew
- Hungarian
- Italian
- Japanese
- Korean
- Norwegian
- Polish
- Portuguese (Brazilian)
- Russian
- Spanish
- Swedish
- Turkish



### For more information

To learn more about IBM Lotus ActiveInsight software, contact your IBM representative or IBM Business Partner, or visit:

[ibm.com/lotus/activeinsight](http://ibm.com/lotus/activeinsight)

For more information about IBM WebSphere Dashboard Framework software, visit:

[ibm.com/websphere/  
dashboardframework](http://ibm.com/websphere/dashboardframework)

© Copyright IBM Corporation 2007

Lotus Software  
IBM Software Group  
One Rogers Street  
Cambridge, MA 02142  
U.S.A.

Produced in the United States of America  
04-07  
All Rights Reserved

IBM, the IBM logo, ActiveInsight, AIX, Domino, Lotus, Tivoli and WebSphere are trademarks of International Business Machines Corporation of the United States, other countries or both.

Intel and Pentium are trademarks or registered trademarks of Intel Corporation or its subsidiaries in the United States and other countries. Microsoft and Windows are trademarks of Microsoft Corporation in the United States, other countries or both. Java and all Java-based trademarks are trademarks of Sun Microsystems, Inc. in the United States, other countries or both. Linux is a registered trademark of Linus Torvalds in the United States, other countries, or both. Other company, product and service names may be trademarks or service marks of others.

The information contained in this document is provided for informational purposes only and provided "as is" without warranty of any kind, express or implied. In addition, this information is based on IBM's current product plans and strategy, which are subject to change by IBM without notice. Without limiting the foregoing, all statements regarding IBM future direction or intent are subject to change or withdrawal without notice and represent goals and objectives only. Nothing contained in this documentation is intended to, nor shall have the effect of, creating any warranties or representations from IBM (or its suppliers or licensors), or altering the terms and conditions of the applicable license agreement governing the use of IBM software.

Users are responsible for identifying the business goals and objectives tracked by IBM Lotus ActiveInsight software. Users are also responsible for ensuring that the data supplied to Lotus ActiveInsight software by a user's other systems are accurate and adequate to track the progress of the user's business against its goals and objectives. IBM does not represent or warrant that use of Lotus ActiveInsight software will yield specific business results or that the goals and objectives identified in any demonstration of Lotus ActiveInsight software are appropriate for implementation by users. In addition, users are solely responsible for their own compliance with any laws and regulations to which they may be subject, including but not limited to the Sarbanes-Oxley Act. It is the user's sole responsibility to obtain advice of competent legal counsel as to the identification of and compliance with any such relevant laws or regulations. IBM does not provide legal, accounting or audit advice or represent or warrant that its services or products will ensure that the user is in compliance with any law or regulation.