

# README for *IBM Fault Analyzer Plug-in for Eclipse V10.1.0.8*

## Copyright statement

(C) Copyright IBM® Corporation 2010. All rights reserved. For legal information, see <http://www.ibm.com/legal/copytrade.shtml>

## Contents

- [System requirements and prerequisites](#)
- [Downloading Fault Analyzer Plug-in for Eclipse V10.1.0.8](#)
- [Installing Fault Analyzer Plug-in for Eclipse V10.1.0.8 into CICS Explorer](#)
- [Getting Started Using Fault Analyzer Plug-in for Eclipse V10.1.0.8](#)
- [Installation step images](#)
- [Technical Support](#)
- [Enhancements](#)

## System requirements and prerequisites

The following minimum hardware levels are required to run the CICS Explorer and are therefore applicable to Fault Analyzer Plug-in for Eclipse V10.1.0.8:

- CPU - Intel® Pentium® 4 or equivalent.
- RAM - 768 MB in addition to the operating system requirements.
- Hard disk - 500 MB available space.

One of the following levels of Windows operating system software is required to install the CICS Explorer and is therefore applicable to Fault Analyzer Plug-in for Eclipse V10.1.0.8:

- Microsoft® Windows® XP 32-bit
- Microsoft Windows Vista 32-bit
- Microsoft Windows Server 2003 32-bit
- Microsoft Windows Server 2008 32-bit

The following levels of software required to install the Fault Analyzer Plug-in for Eclipse V10.1.0.8:

- CICS Explorer (for Windows) V1.0.0.5, or later
- Fault Analyzer for z/OS Version 10.1 or later with the PTF for APAR PM47919

The Fault Analyzer Plug-in for Eclipse V10.1.0.8 is available in the following national languages:

- English
- Japanese

- Korean

[Back to Contents](#)

## Downloading Fault Analyzer Plug-in for Eclipse V10.1.0.8

The Fault Analyzer Plug-in for Eclipse V10.1.0.8 can be downloaded from either of the following:

1. It may be downloaded from MVS to your PC in BINARY mode from data set IDI.SIDIDOC2(IDIGUIP). The downloaded file is called IDIGUIP.zip.
2. From the

[Problem Determination Tools Plug-ins website](#), the download file is called FA\_plugin\_V10108.zip file.

[Back to Contents](#)

## Installing Fault Analyzer Plug-in for Eclipse V10.1.0.8 into CICS Explorer

The following steps are required in order to install the Fault Analyzer for z/OS Plug-in for Eclipse V10.1.0.8 into CICS explorer.

1. Extract all the contents of FA\_plugin\_V10108.zip or IDIGUIP.zip to any writable directory of your choice, for example, C:/FaultAnalyzer.
2. Start CICS Explorer.
3. In the action bar click "Help", and scroll down and select "Software Updates".
4. The "Software Updates and Add-ons" pop-up appears. Click the "Available Software" tab.  
[Image](#)
5. Click "Add Site" to point CICS Explorer to the downloaded Fault Analyzer plug-in.
6. A third pop-up is displayed. Click "Archive".
7. In the "Repository Archive" pop-up, navigate to the location where you extracted the files from FA\_plugin\_V10108.zip or IDIGUIP.zip. Select the IDIPlugin.zip file and click "Open".  
[Image](#)
8. The "Add Site" box displays the selected location. Click "OK".
9. The "Software Updates and Add-ons" window shows the new software selections. Click the check box for the newly added software. Then click "Install...". **If the Debug Tool plugin version 11.1.0.1 or above is to be installed, do not select to install the LPEX editor packaged with the Fault Analyzer plugin. The LPEX version included with Debug Tool will be the default editor that this plugin will use.**  
[Image](#)
10. The "Install" window is displayed. Make sure there is a check mark by each item and click "Next". (The "Finish" button might be enabled rather than "Next".)
11. Accept the terms of the license agreements, and click "Finish".
12. You will be prompted to restart CICS Explorer. Click "Yes". After CICS Explorer restarts, if it does not display the Welcome page, click on "Help" -> "Welcome" to display the Welcome page, then click on "Overview". From there, you can click on the link to "Getting started".

## Installing Fault Analyzer Plug-in for Eclipse V10.1.0.8 into CICS Explorer 1.1

The following steps are required in order to install the Fault Analyzer for z/OS Plug-in for Eclipse V10.1.0.8 into CICS explorer 1.1.

1. Extract all the contents of FA\_plugin\_V10108.zip or IDIGUIP.zip to any writable directory of your choice, for example, C:/FaultAnalyzer.
2. Start CICS Explorer.
3. In the action bar click "Help", and scroll down and select "Install New Software...".
4. The "Install" pop-up appears.  
[Image](#)
5. Click "Add..." to point CICS Explorer to the downloaded Fault Analyzer plug-in.
6. A third pop-up is displayed. Click "Archive".
7. In the "Repository Archive" pop-up, navigate to the location where you extracted the files from FA\_plugin\_V10108.zip or IDIGUIP.zip. Select the IDIPlugin.zip file and click "Open".  
[Image](#)
8. The "Add Site" box displays the selected location. Click "OK".
9. The "Install" window shows the new software selections. De-select the "Group items by category" check box. Click the check box for the Fault Analyzer package. **If the Debug Tool plugin version 11.1.0.1 or above is to be installed, do not select to install the LPEX editor packaged with the Fault Analyzer plugin. The LPEX version included with Debug Tool will be the default editor that this plugin will use.**  
[Image](#)
10. Click "Next". (The "Finish" button might be enabled rather than "Next".)
11. Accept the terms of the license agreements, and click "Finish".
12. You will be prompted to restart CICS Explorer. Click "Yes". After CICS Explorer restarts, if it does not display the Welcome page, click on "Help" -> "Welcome" to display the Welcome page, then click on "Overview". From there, you can click on the link to "Getting started".

Please refer to the *Fault Analyzer for z/OS User's Guide and Reference* for details on the host configuration requirements.

[Back to Contents](#)

## Getting Started Using Fault Analyzer for z/OS Plug-in for Eclipse V10.1.0.8

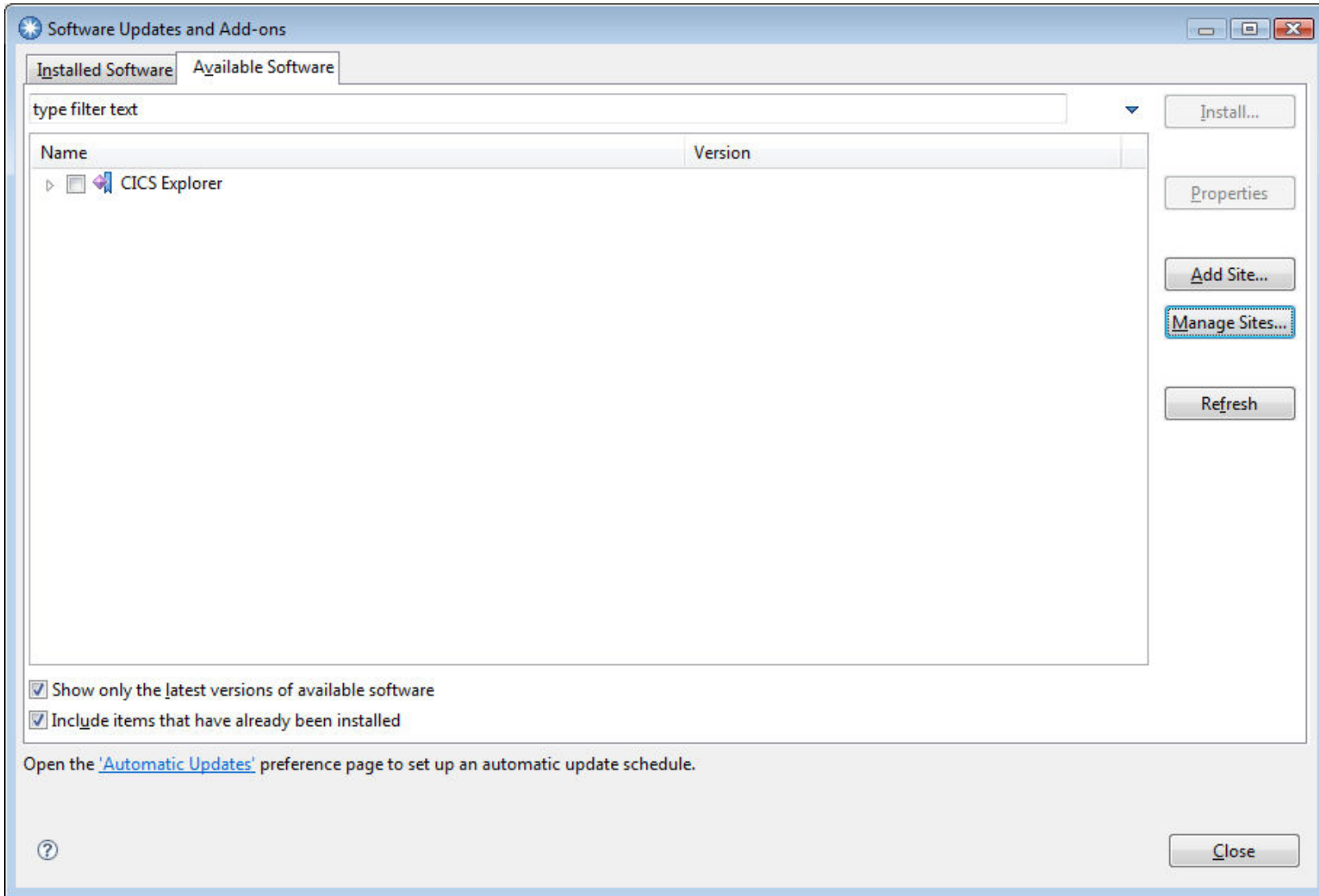
You can find more information on how to use Fault Analyzer Plug-in for Eclipse V10.1.0.8 in the help of CICS Explorer. Click "Help" -> "Help Contents". Expand the topic "Fault Analyzer for z/OS client for Eclipse".

[Back to Contents](#)

## Installation step images

The following images can be used for reference during the installation of the Fault Analyzer Plug-in for Eclipse V10.1.0.8:

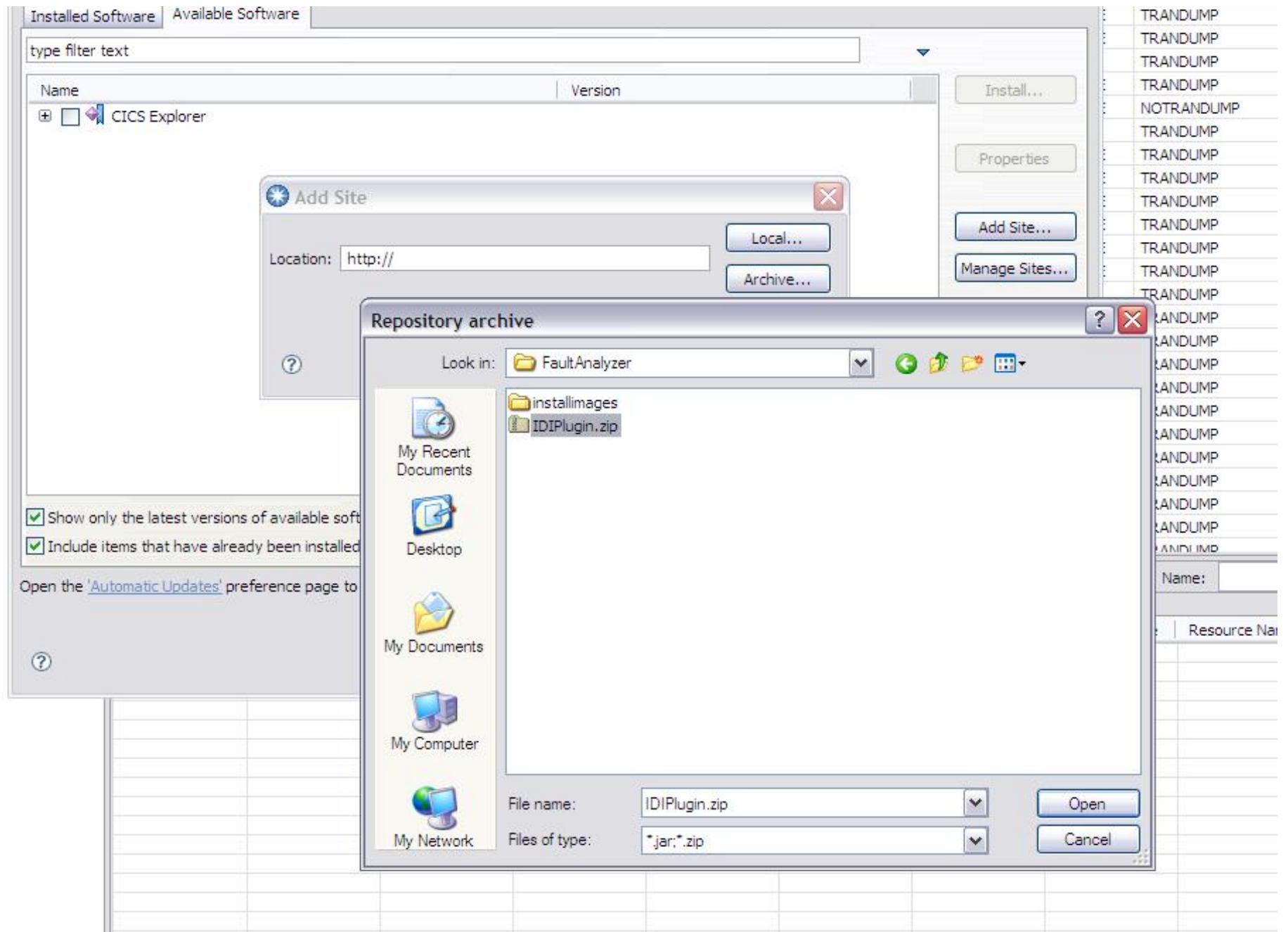
Available Software tab



[Back to install instructions](#)

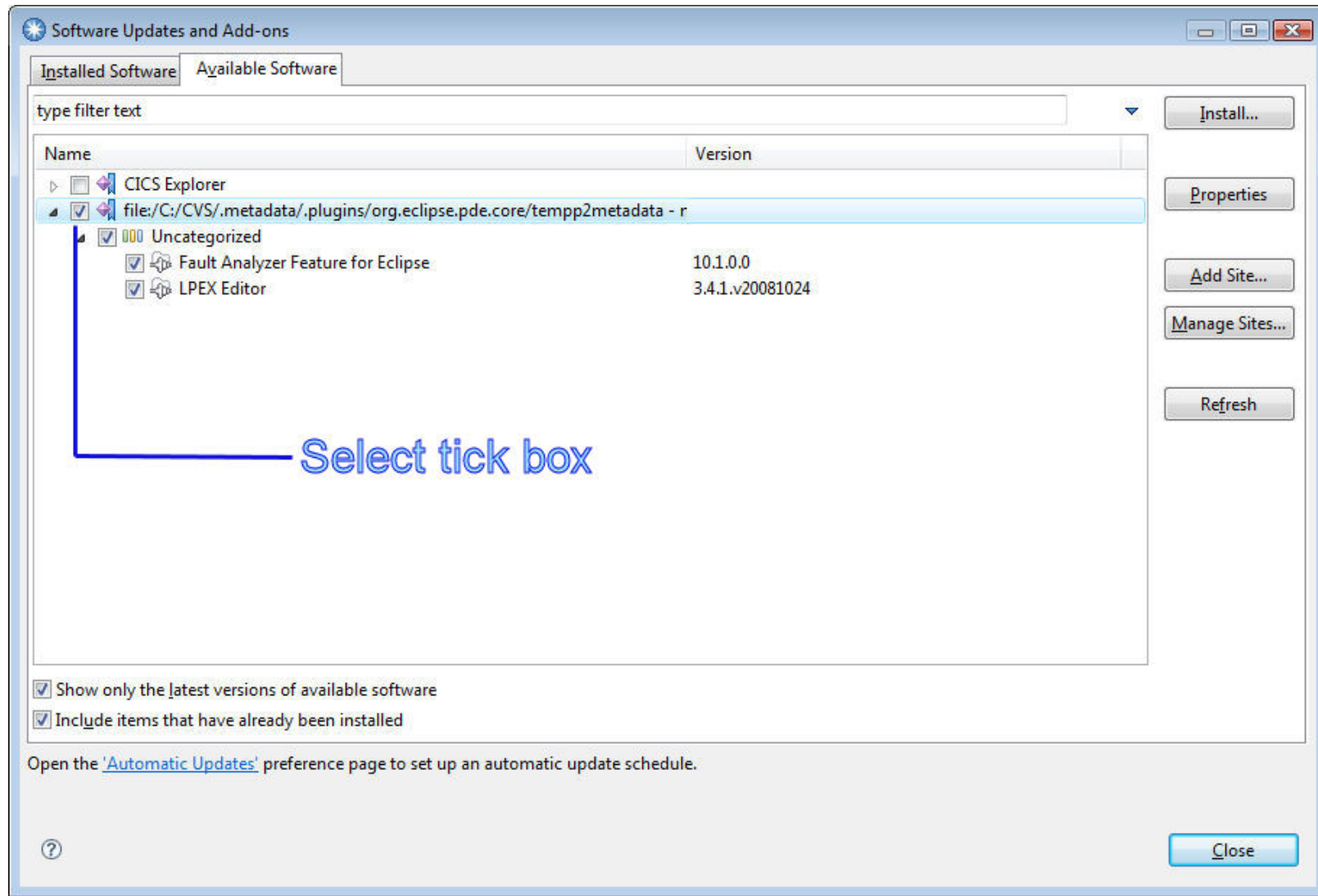
Archive Selection

C66E1FA1	AC01	✓	ENABLED	0	1	DFHTCL00	NOTPURGEABLE	TRANDUMP
C66E1FA1	ADB2	✓	ENABLED	0	1	DFHTCL00	NOTPURGEABLE	TRANDUMP
C66E1FA1	AFIL	✓	ENABLED	0	1	DFHTCL00	NOTPURGEABLE	TRANDUMP



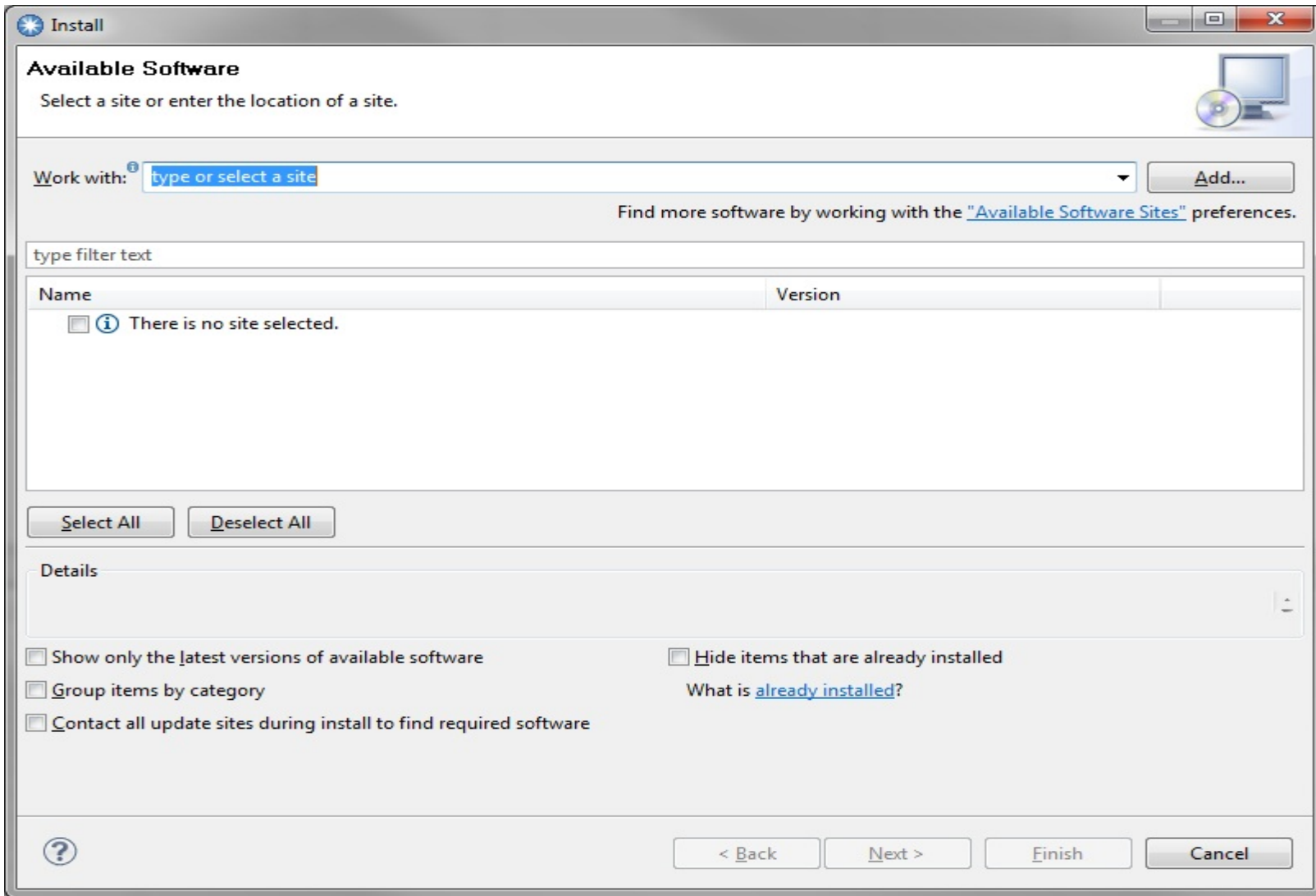
[Back to install instructions](#)

Select new software



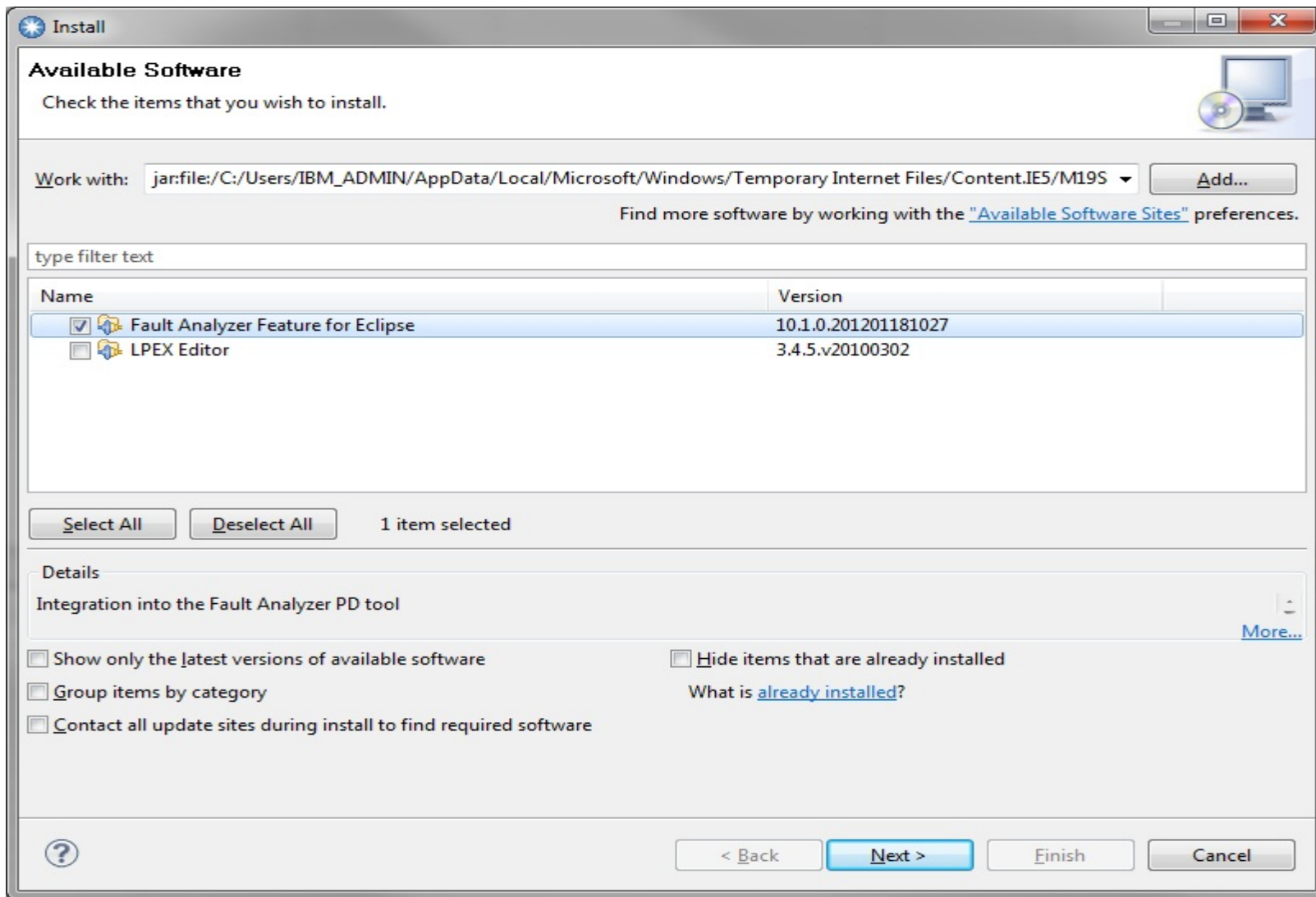
[Back to install instructions](#)

Select new software



[Back to install instructions](#)

Select new software



[Back to install instructions](#)

[Back to Contents](#)

## Technical Support

This plug-in is available at no charge to all licensed users of IBM Fault Analyzer for z/OS V10, or later. It is supplied under the standard terms and conditions of the IBM International Program License Agreement (IPLA) and of the associated License Information and other documentation, and provides a defect correction entitlement for those licensed users entitled to service for IBM Fault Analyzer for z/OS V10, or later. Service is available for this plug-in for as long as the IBM Fault Analyzer for z/OS product with which the plug-in is to be



used is generally supported by IBM. In addition, IBM reserves the right to discontinue service on this plug-in when it is withdrawn from marketing by IBM. Please reference "IBM Fault Analyzer for z/OS" as the entitled product when contacting IBM and requesting support for this plug-in.

## Enhancements

### V10.1.0.8

- Fixed requirement for Java 1.7 in v10.1.0.7

### V10.1.0.7

- Column filter settings are now case-insensitive

### V10.1.0.6

- Save columns and restore on restart

### V10.1.0.5

- Fix minidump save in Eclipse workbench toolbar and key shortcut

### V10.1.0.4

- Quick column configuration through context menu
- History file refreshes by default after Eclipse startup
- Fixed defect that prevents workspaces from being copied
- Option to securely save password
- Fix LPEX dependency issue

### V10.1.0.3

- Fixed mixed case password defect

### V10.1.0.2

- Faster Eclipse editor based browser
- Bookmarks and Task markers
- Find and Text search capability
- Option to use default sidefiles
- Option to choose the client's outgoing port