

# IBM Tivoli Composite Application Manager for Transactions versions 7.1, 7.2, and 7.3

## Setting Information Center search scope



© 2011 IBM Corporation

IBM Tivoli® Composite Application Manager versions 7.1, 7.2, and 7.3: Setting Information Center search scope

## Objective

When you complete this module, you can perform the following tasks:

- Create a search scope filter
- Run a filtered search
- View search results
- Edit a search scope filter

When you complete this module, you can perform the following tasks:

- Create a search scope filter
- Run a filtered search
- View search results
- Edit a search scope filter

## Introduction

Queries that you enter through the ITCAM for Transactions Information Center can return unnecessary results for other products. This lesson teaches you to create a filter that ensures the query returns only results for the version of ITCAM for Transactions that you specify.

### Introduction.

The queries you run by using the ITCAM for Transactions Information Center can return unnecessary results for other products. This lesson teaches you to create a filter that ensures the query returns only results for the version of ITCAM for Transactions that you specify.

## Overview

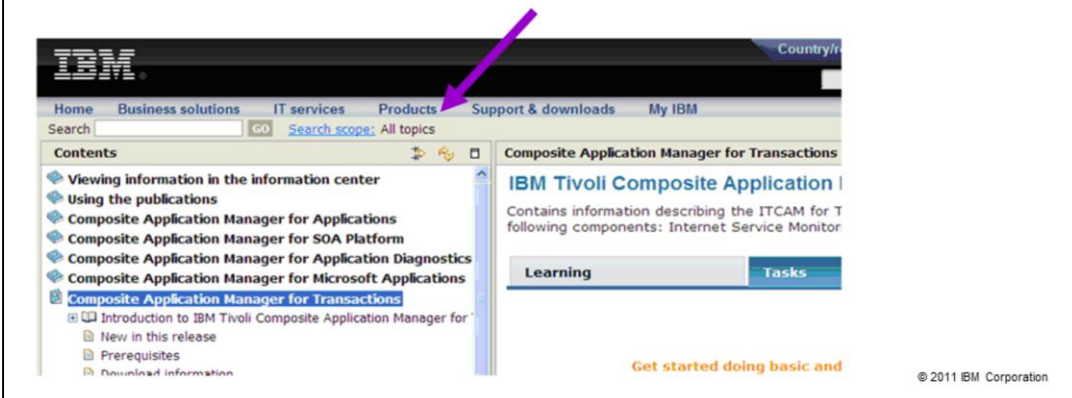
- Getting started
- Creating a filter
- Running a query
- Viewing query results
- Editing the Search scope

### Overview.

- Getting started
- Creating a filter
- Running a query
- Viewing query results
- Editing the Search scope

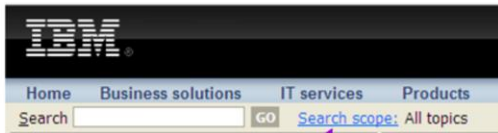
## Getting started

- You access the Information Center for the ITCAM for Transactions at the following website:  
**publib.boulder.ibm.com/infocenter/tivihelp/v24r1/topic/com.ibm.itcamt.doc\_7.3/ic-homepage.html**
- The Contents panel lists additional applications
- By default, a query applies to all of the applications that the Contents panel lists

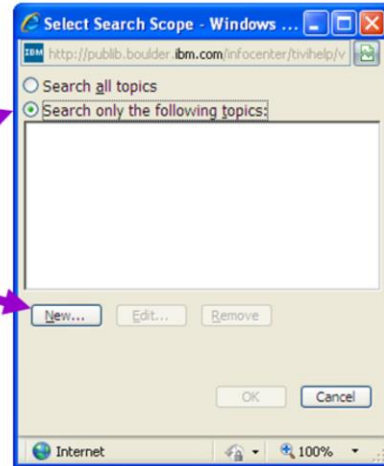


Access the Information Center for the ITCAM for Transactions by using the web address that the graphic shows. The **Contents** panel lists the other applications. When you enter a query, by default, the query applies to all of the applications that Contents panel lists. If you create and use a search scope filter, queries return results only for the components that the filter identifies.

## Creating the filter (1 of 5)



1. Click the **Search scope** link
2. Click the **Search only the following topics** option
3. Click **New**



6

Setting Information Center search scope

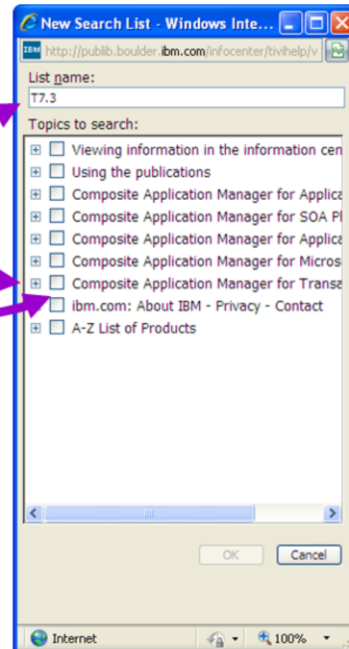
© 2011 IBM Corporation

To create a filter, perform these steps:

1. Click **Search scope** link.
2. Select the option for **Search only the following topics**.
3. Click **New**.

## Creating the filter (2 of 5)

- The New Search List window opens
4. In the **List name** field, type a descriptive name for your search filter
  5. Click the plus sign (+) to expand the list
  6. Select the check box for **Composite Application Manager for Transactions**



7

Setting Information Center search scope

© 2011 IBM Corporation

The **New Search List** window displays.

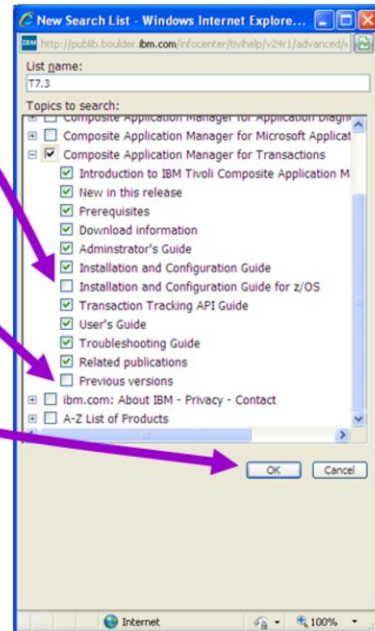
4. In the **List name** field, type a descriptive name for your search filter.

5. Click the plus sign to expand the list.

6. Select the top level check box for **Composite Application Manager for Transactions**. This also selects all of the subtopics.

## Creating the filter (3 of 5)

7. Clear the **Installation and Configuration Guide for z/OS** check box
8. Clear the **Previous versions** check box
9. Click **OK**



8

Setting Information Center search scope

© 2011 IBM Corporation

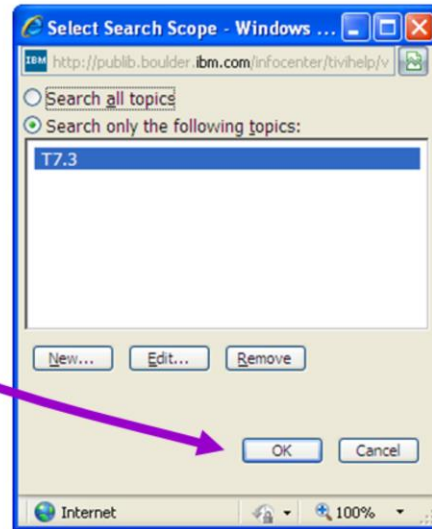
The subtopics for Composite Application Manager for Transactions are displayed and selected.

7. To view only the query results for distributed platforms, clear the **Installation and Configuration Guide for z/OS** check box.
8. To view only the query results for the current version of ITCAM for Transactions, clear the **Previous versions** check box.
9. Click **OK** to close the **New Search List** window.



## Creating the filter (4 of 5)

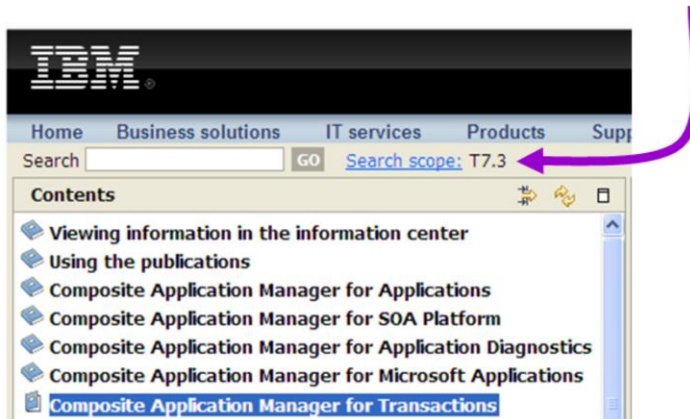
10. Click **OK**



10. In the **Select Search Scope** window, click **OK**.

## Creating the filter (5 of 5)

**Search scope** is automatically set to the filter name created, T7.3



10

Setting Information Center search scope

© 2011 IBM Corporation

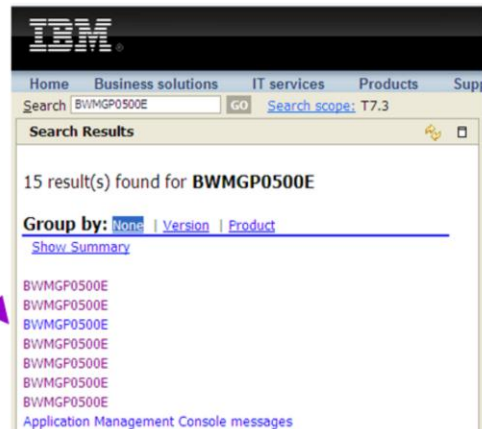
The software sets the **Search scope** to the filter name that you created, **T7.3**. Before entering a query, verify the search scope is set to your filter name. The search scope is not guaranteed to persist after you close and reopen the Information Center. If the search scope is not set, assign a filter. You can use a filter name that you previously used. Each time you create a search scope filter, you must specify the items to include in queries.

## Running a query

1. In the **Search** field, enter the query, and click **GO**

**Example:** Enter the search string, such as an error message number

2. From the list of results, click the link



11

Setting Information Center search scope

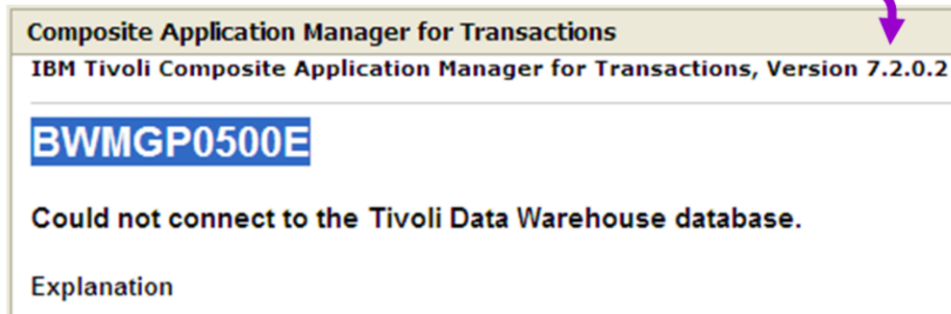
© 2011 IBM Corporation

To run a query, perform these steps:

1. In the **Search** field, type the query and click **GO**. For example, search for a message number that is in the trace logs or Tivoli Enterprise Portal by entering the message string and clicking **GO**.
2. The number of results is displayed above the **Group by** heading. The list of the links follows the heading. To view one of the results, click its link.

## Viewing query results

- If you require results for the current version of ITCAM for Transactions, do not select the **Previous version** check box in the New Search List window
- Check the **version number**



**Composite Application Manager for Transactions**  
**IBM Tivoli Composite Application Manager for Transactions, Version 7.2.0.2**

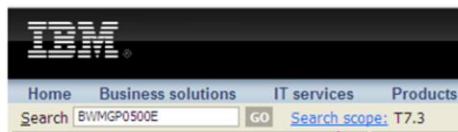
**BWMGP0500E**

**Could not connect to the Tivoli Data Warehouse database.**

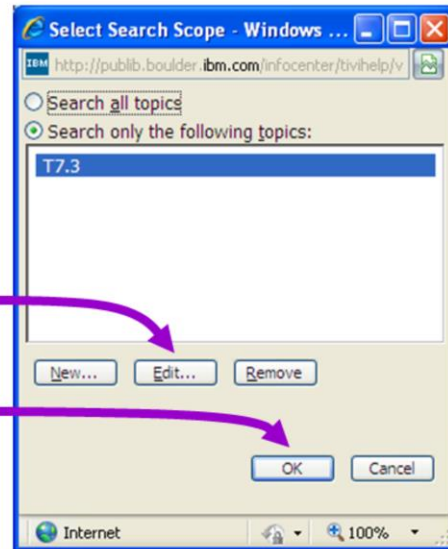
**Explanation**

The article for the selected link displays on the right side of the Information Center. Check the version number in the article heading. If you selected **Previous versions** when you created the filter, the query returns results for each version of ITCAM for Transactions that matches your query. If you require only results for the current version of ITCAM for Transactions, do not select the **Previous versions** check box when selecting the **New Search List** items.

## Editing the Search scope



1. Click the **Search scope** link
2. From the Select Search Scope window, click **Edit**
3. Make edits
4. Click **OK**



13

Setting Information Center search scope

© 2011 IBM Corporation

To edit the search scope, perform these steps:

1. Click the **Search scope** link.
2. From the **Select Search Scope** window, click **Edit**.
3. Make edits.
4. Click **OK**.

Now you can run another query by using the revised filter.

## Process review

- Getting started
- Creating a filter
- Running a query
- Viewing query results
- Editing the Search scope

Process review.

- Getting started
- Creating a filter
- Running a query
- Viewing query results
- Editing the Search scope

## Cross-application query filter

- Can create filters for cross-application queries
- Cross-application queries can be useful

You can create cross-application query filters. It is possible to select criteria in a scope filter to view search results for two or more different applications. A cross-application query can be useful. An example is researching application compatibility or a coexistence issue.

## Summary

Now that you have completed this module, you can perform the following tasks:

- Create a search scope filter
- Run a filtered search
- View search results
- Edit a search scope filter

Now that you have completed this module, you can perform the following tasks:

- Create a search scope filter
- Run a filtered search
- View search results
- Edit a search scope filter



## Trademarks, disclaimer, and copyright information

IBM, the IBM logo, ibm.com, Tivoli, and z/OS are trademarks or registered trademarks of International Business Machines Corp., registered in many jurisdictions worldwide. Other product and service names might be trademarks of IBM or other companies. A current list of other IBM trademarks is available on the web at "[Copyright and trademark information](http://www.ibm.com/legal/copytrade.shtml)" at <http://www.ibm.com/legal/copytrade.shtml>

THE INFORMATION CONTAINED IN THIS PRESENTATION IS PROVIDED FOR INFORMATIONAL PURPOSES ONLY. WHILE EFFORTS WERE MADE TO VERIFY THE COMPLETENESS AND ACCURACY OF THE INFORMATION CONTAINED IN THIS PRESENTATION, IT IS PROVIDED "AS IS" WITHOUT WARRANTY OF ANY KIND, EXPRESS OR IMPLIED. IN ADDITION, THIS INFORMATION IS BASED ON IBM'S CURRENT PRODUCT PLANS AND STRATEGY, WHICH ARE SUBJECT TO CHANGE BY IBM WITHOUT NOTICE. IBM SHALL NOT BE RESPONSIBLE FOR ANY DAMAGES ARISING OUT OF THE USE OF, OR OTHERWISE RELATED TO, THIS PRESENTATION OR ANY OTHER DOCUMENTATION. NOTHING CONTAINED IN THIS PRESENTATION IS INTENDED TO, NOR SHALL HAVE THE EFFECT OF, CREATING ANY WARRANTIES OR REPRESENTATIONS FROM IBM (OR ITS SUPPLIERS OR LICENSORS), OR ALTERING THE TERMS AND CONDITIONS OF ANY AGREEMENT OR LICENSE GOVERNING THE USE OF IBM PRODUCTS OR SOFTWARE.

© Copyright International Business Machines Corporation 2011. All rights reserved.