



The slide features a central collage of various images including a highway, a key, a chess piece, a person, and abstract patterns. The collage is framed by a white border. In the top left corner, the 'Tivoli software' logo is displayed. In the top right corner, the 'IBM' logo is shown. Below the collage, the title 'IBM Tivoli Compliance Insight Manager 8.0 Introduction' is centered. At the bottom left, the 'e.business software' logo is present, and at the bottom right, the 'IBM Software Group' logo is displayed.

Tivoli software

IBM

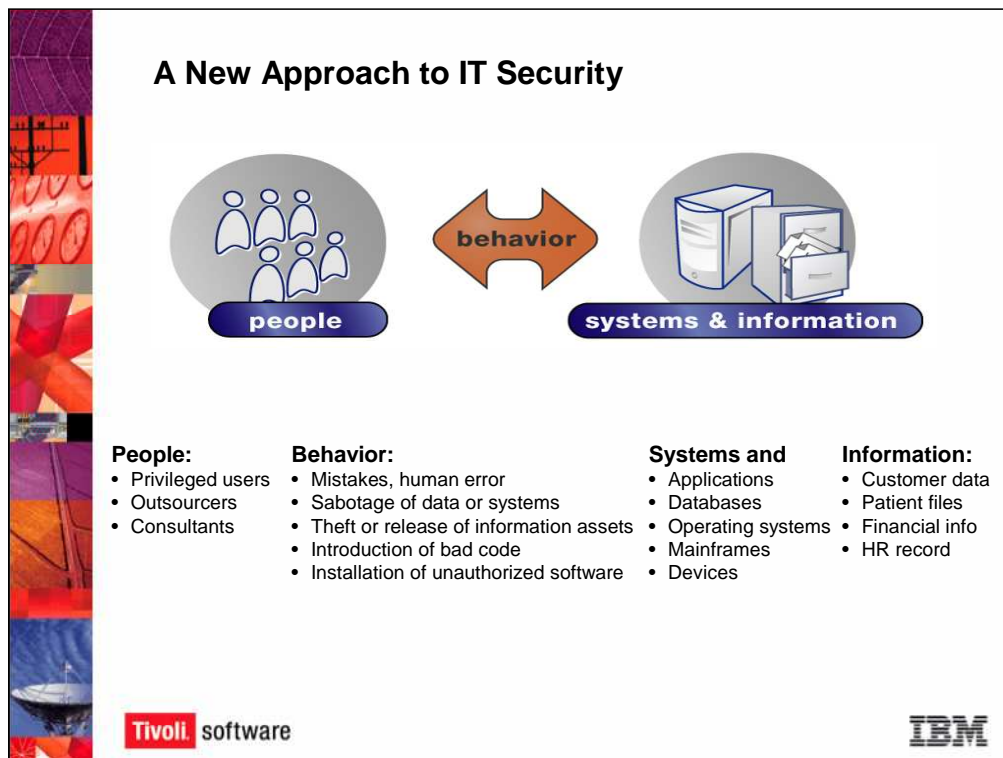
**IBM Tivoli Compliance Insight Manager 8.0
Introduction**

e.business software

IBM Software Group

Welcome to the Tivoli Compliance Insight Manager v. 8.0 Product Demonstration.

Insight is a security audit and compliance software that aggregates and analyzes log data to see if privilege users are complying with company acceptable use policy and with national regulations such as Sarbanes Oxley and with Industry regulations such as ISO 17799. This is a short demo that covers the main functionalities and reports available in Insight.

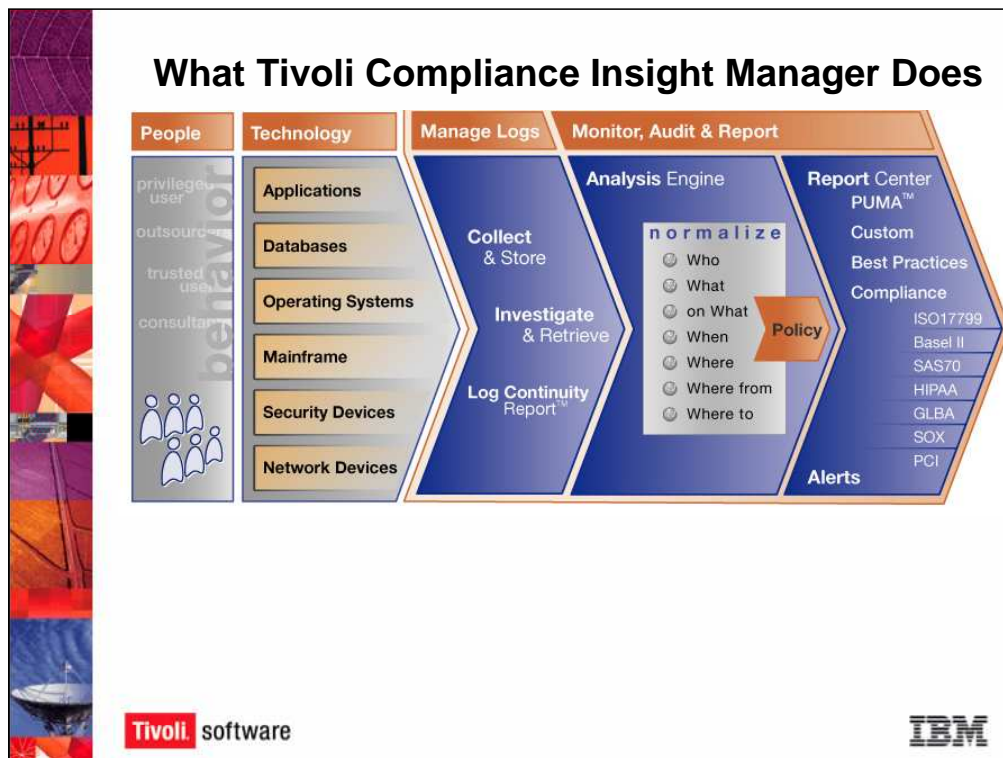


Tivoli Compliance Insight Manager takes a new approach to IT security: it puts log data and security events into a real-world context.

It views IT security as a function of **people** and their **interaction** with your **systems** and **information**.


Your employees, outsourcers, and business partners have legitimate business reasons to access your network resources -- conducting business -- so controls and limits must not impede their daily work. But at the same time, you need to ensure that their network activities comply with company acceptable use and security policies and with national and industry regulations. In addition, you must be able to show auditors that your company is complying with the standards.

In order to adequately protect your network, you need to be able to see who is interacting with which systems and which data, and what they are doing.



When you monitor network security, you are monitoring what people – your privileged users, outsourcers, trusted users, and consultants – are doing with your technology – your applications, databases, operating systems, and devices.

All of your devices, or event sources, generate reams of log data documenting their activity. Tivoli Compliance Insight Manager automatically collects these logs, storing the original logs in a secure depot, and processes the logs using its analysis engine, where logs are normalized into an easy-to-understand W7 language so you can easily search for logs and events. W7 normalizes cryptic log data into an easy-to-understand, English language of Who, What, When, Where, On What, Where To, and Where From.



Questions?

For more information, please see:

- www.ibm.com/tivoli

Tivoli software

IBM

For More information, please see

This concludes the Tivoli Compliance Insight Manager v. 8.0 Overview course.