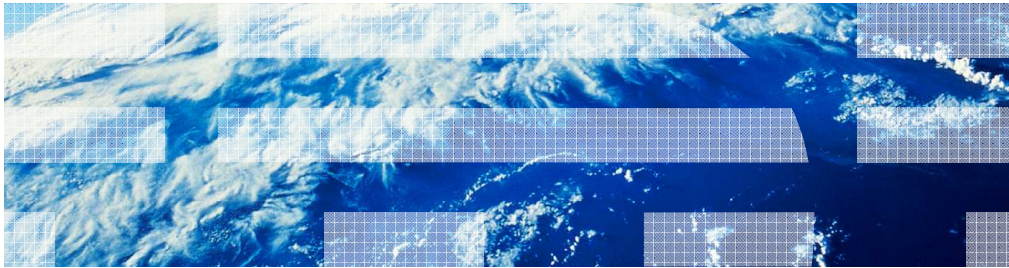


# Business Process Management

## IBM Business Process Manager V7.5

### BPM Standard architecture



This presentation provides a quick overview of the architecture for the Standard configuration of IBM Business Process Manager.

The purpose is to highlight the relationships between the servers, databases and administration tools.

Everything presented here applies to BPM Express with the exception of the server clustering.

---

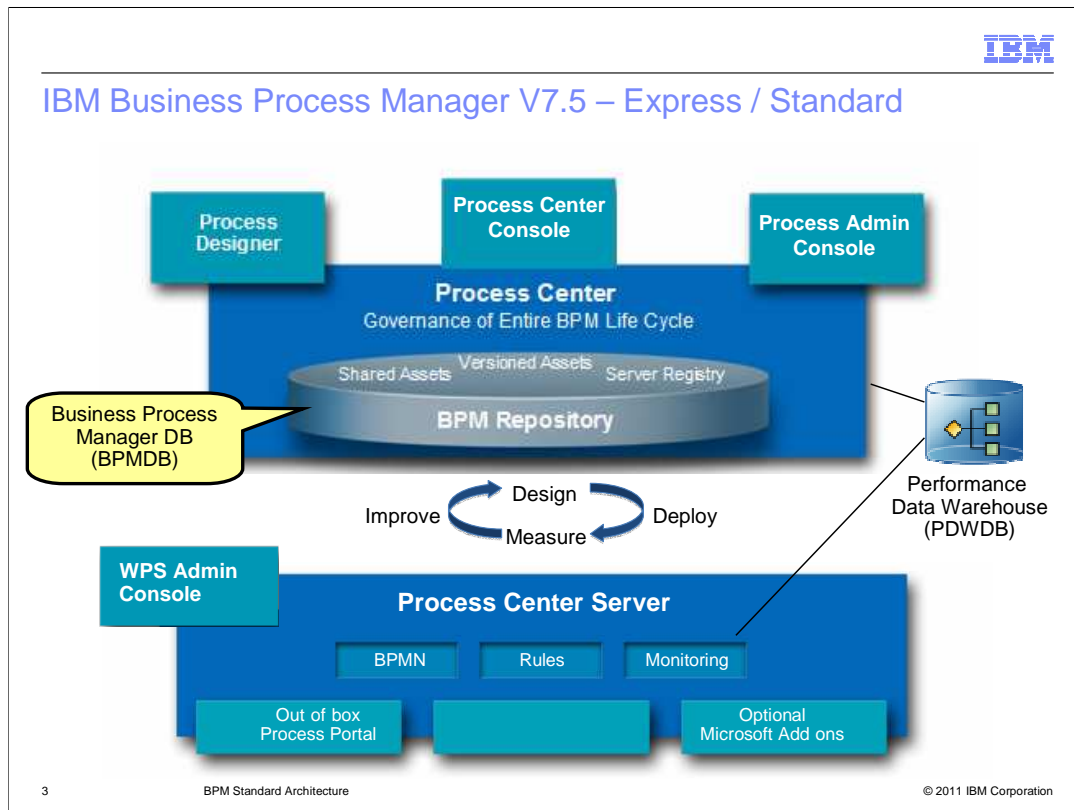
## Table of contents

- Architecture
  - Process Center view
  - Server environments and databases
  - Server clustering with BPM Standard

There are three perspectives that are discussed.

The Process Center view, the server environments and their databases and then, server clustering with BPM Standard.

## IBM Business Process Manager V7.5 – Express / Standard



The heart of the IBM Business Process Manager V7.5 is the Process Center and Process Center Server. The Process Center constitutes all the tools and interfaces for creating and managing the business process and servers, while the Process Center Server is the runtime component where the business processes run.

The Process Center uses the BPM repository to store the business process definitions and all the related assets. The stored assets are automatically versioned for you. The repository uses an SQL database with a default name of BPMDB, for common database.

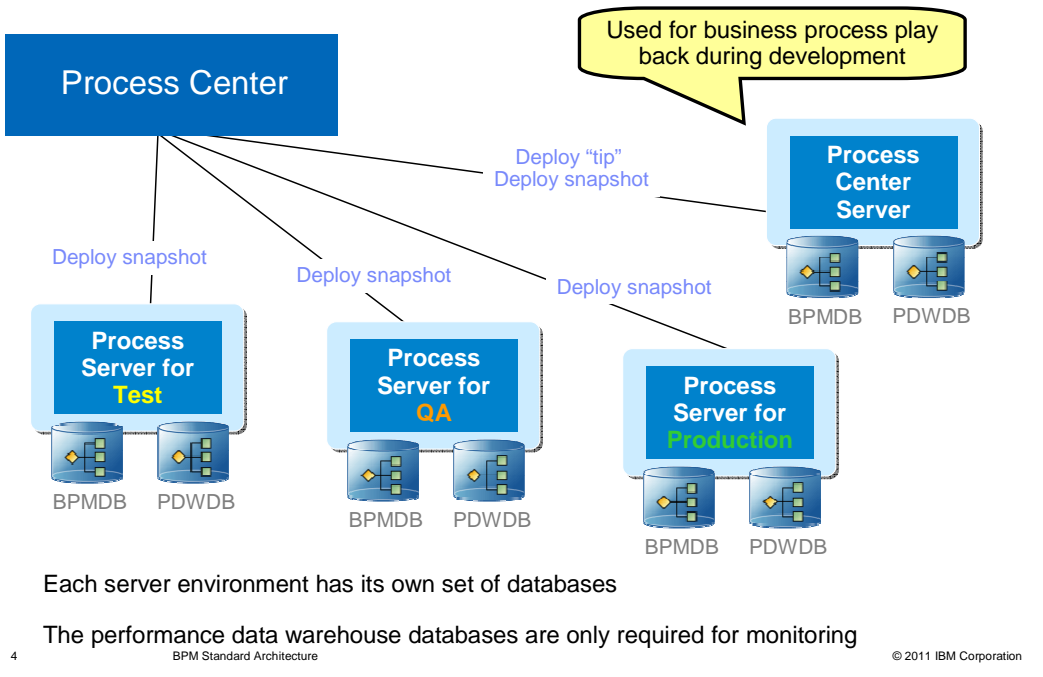
There is an additional database that is optional but is necessary for monitoring. It is called the performance database warehouse. The default name is PDWDB.

You interact with the Process Center through the Process Designer, the Process Center console and the Process Administration console.

The Process Designer is a full function, Eclipsed based application used for creating and editing business processes and managing the server environments.

The Process Center console is a browser based application that lets you manage assets, servers and relationships, but does not provide the capability for creating and editing the business processes.

## Server environments and databases

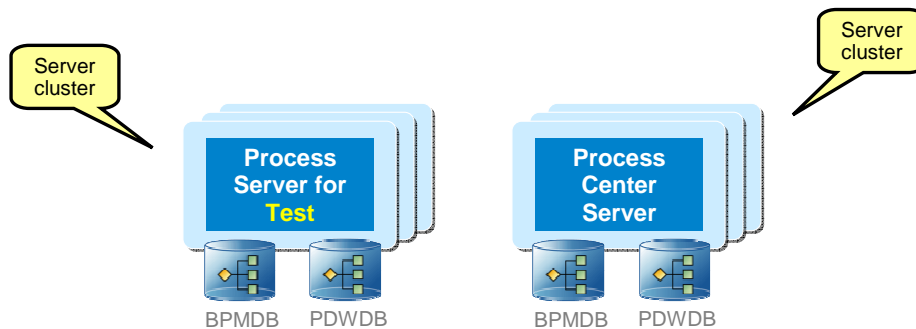


As mentioned in the previous slide, the Process Center server is the runtime component for the Process Center. When working with the Process Designer you can run the current version of your business process in the Inspector. When you do this, you are running the tip in the Process Center server.

As your development progresses, you will need to deploy your business process applications to different environments. First, to the test environment, then the quality assurance environment and finally the production environment. Each environment will have its own set of databases.

## Server clustering with BPM Standard

- Server clustering is not available for the BPM Express environment
- With BPM Standard...
  - Both horizontal and vertical scaling are supported
  - Process Center Server can be clustered
  - Process Servers can be clustered



### [Clustering theory and concepts - V6.1](#)

It is important to note that the main distinction between the Express and the Standard environments is the ability to cluster the servers.

The next thing to take away from this slide is that the database sets are for the clusters.

The clustering support is provided by the base WebSphere Application Server framework. To learn more about it, see the

Clustering Theory and concepts - V6.1 presentation. Although this was written for V6.1 the theory and concepts are still applicable.

## Summary



- Architecture
  - Process Center view
    - Single point of governance
    - Has a Process Center Server for the development runtime
  - Server environments and databases
    - Each server environment has its own set of databases.
    - With BPM Standard there are two databases
  - Server clustering with BPM Standard
    - The Standard and the Express configurations are the same with the exception of clustering.
      - Server clustering is not available with the Express configuration

This has been a very brief overview of the architecture for the Business Process Manager Standard configuration.

The key things to take away from this presentation are:

The Process Center provides a single point of management for development and runtime and there is a special process server, called the Process Center Server, that is part of the Process Center.

Each server environment requires its own set of databases.

And the Express configuration does not support server clustering.



## Feedback

Your feedback is valuable

You can help improve the quality of IBM Education Assistant content to better meet your needs by providing feedback.

- Did you find this module useful?
- Did it help you solve a problem or answer a question?
- Do you have suggestions for improvements?

Click to send email feedback:

[mailto:iea@us.ibm.com?subject=Feedback about BPMv75 Std ArchOverview.ppt](mailto:iea@us.ibm.com?subject=Feedback%20about%20BPMv75%20Std%20ArchOverview.ppt)

This module is also available in PDF format at: [../BPMv75 Std ArchOverview.pdf](#)

You can help improve the quality of IBM Education Assistant content by providing feedback.



## Trademarks, disclaimer, and copyright information

IBM, the IBM logo, ibm.com, Express, and WebSphere are trademarks or registered trademarks of International Business Machines Corp., registered in many jurisdictions worldwide. Other product and service names might be trademarks of IBM or other companies. A current list of other IBM trademarks is available on the web at "[Copyright and trademark information](http://www.ibm.com/legal/copytrade.shtml)" at <http://www.ibm.com/legal/copytrade.shtml>

Other company, product, or service names may be trademarks or service marks of others.

THE INFORMATION CONTAINED IN THIS PRESENTATION IS PROVIDED FOR INFORMATIONAL PURPOSES ONLY. WHILE EFFORTS WERE MADE TO VERIFY THE COMPLETENESS AND ACCURACY OF THE INFORMATION CONTAINED IN THIS PRESENTATION, IT IS PROVIDED "AS IS" WITHOUT WARRANTY OF ANY KIND, EXPRESS OR IMPLIED. IN ADDITION, THIS INFORMATION IS BASED ON IBM'S CURRENT PRODUCT PLANS AND STRATEGY, WHICH ARE SUBJECT TO CHANGE BY IBM WITHOUT NOTICE. IBM SHALL NOT BE RESPONSIBLE FOR ANY DAMAGES ARISING OUT OF THE USE OF, OR OTHERWISE RELATED TO, THIS PRESENTATION OR ANY OTHER DOCUMENTATION. NOTHING CONTAINED IN THIS PRESENTATION IS INTENDED TO, NOR SHALL HAVE THE EFFECT OF, CREATING ANY WARRANTIES OR REPRESENTATIONS FROM IBM (OR ITS SUPPLIERS OR LICENSORS), OR ALTERING THE TERMS AND CONDITIONS OF ANY AGREEMENT OR LICENSE GOVERNING THE USE OF IBM PRODUCTS OR SOFTWARE.

© Copyright International Business Machines Corporation 2011. All rights reserved.