

IBM Tivoli Network Manager IP Edition V3.8

Scheduling reports



Welcome to scheduling reports in IBM Tivoli Network Manager IP Edition V3.8.

Objectives

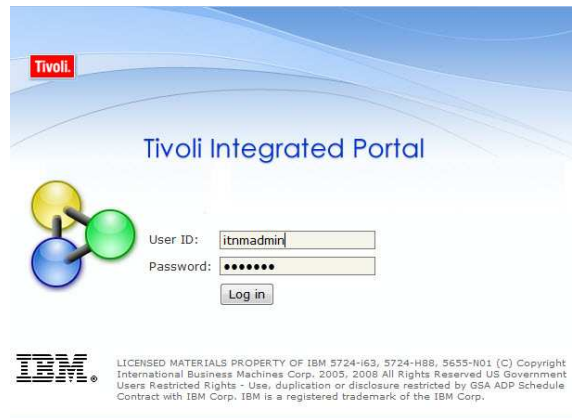
At the end of this module, you should be able to:

- View IBM Tivoli® Network Manager asset reports
- Create a current event status report
- Schedule report snapshots
- Schedule event status reports

At the end of this module, you should be able to view IBM Tivoli Network Manager asset reports, create a current event status report, schedule report snapshots, and schedule event status reports.

Logging on to Tivoli Integrated Portal

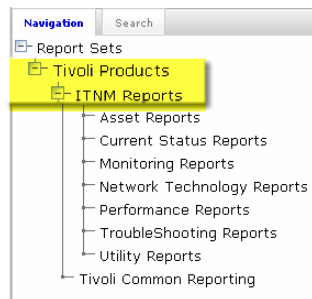
- Open the Uniform Resource Locator (URL) for Tivoli Integrated Portal **https://<host_IP_address>:16316/ibm/console**
- Log on as a Tivoli Integrated Portal user with rights to display reports



First, log on to the Tivoli Integrated Portal graphical user interface. To do this, open your compatible browser and enter the uniform resource locator (URL) of the Tivoli Integrated Portal server. The default installation uses https on port 16316. Make certain that you log on as a user that has sufficient rights to view reports. The administrator for Tivoli Network Manager or Tivoli Integrated Portal has the ability to define these permissions.

Opening a list of available reports

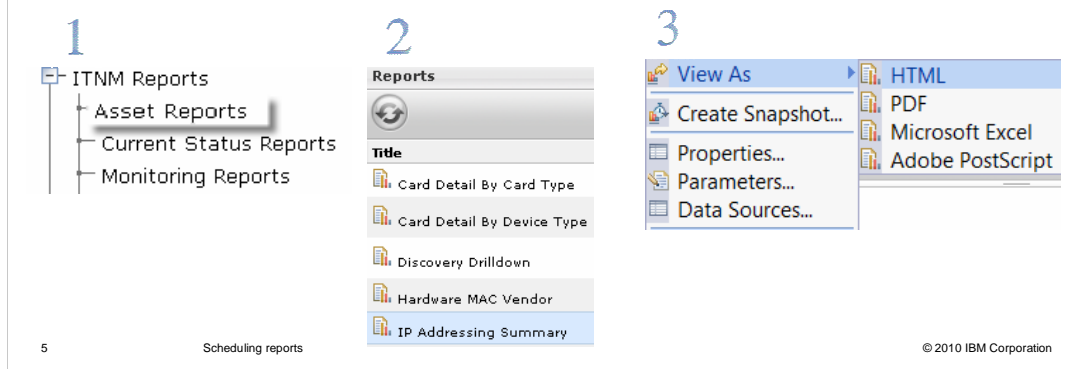
- Select Common Reporting from the left menu
- Expand the list of available reports by clicking the plus icon (+) beside **Tivoli Products** and then beside **ITNM Reports**



From the menu on the left, select Reporting and then Common Reporting. A list of available report sets is displayed in the frame to the right. Expand the list of available reports by clicking the plus icon beside the report categories you want to view.

Viewing a report

1. Select a report category
2. Scroll through the list of available reports associated with that category
3. Right-click the report name, select **View As**, and then select the format in which you want to view the report data



Click a report category to select it. In the frame to the right of the report categories, you see a list of reports in that category. Scroll through the list of available reports until you find the report you want. Right-click the report name, and then select View As. Select one of the four report format options.

Viewing a report (continued)

4. Select the correct Tivoli Network Manager domain
5. Configure other parameters for the on-demand report as necessary
6. Click **Run**

On-Demand Report Parameters

This dialog allows you to define the parameter(s) to be used for an on-demand running of the **IP Addressing Summary** report.

After viewing, report output is discarded.

*Domain Name
TNM38GO

CIDR String Threshold
 30

*Minimum % of Subnet Used
20

*Maximum % of Subnet Used

Run Cancel

After you select a format, the Report Parameters window opens. You can override any default parameter values or specify any required parameters for this run of the report.

To create a report, you must have the Tivoli Network Manager domain name. Select the correct domain name from the pull-down menu. Some reports require additional configuration parameters. In the example shown here, the **IP Addressing Summary** report requires subnet-related parameters to configure the report. When you finish configuring the report parameters, click **Run**. The report is then formatted and opened for viewing in the Report Viewer window.

When you view a report in this manner, the report data is only available while you are viewing it. After you close the report window, that data is no longer available for display. To view the data again, you have to create a new report. However, it is possible to create a report snapshot, which is saved to disk and is available for retrieval at a future time.

Manually creating a report snapshot

- Right-click a report name and select **Create Snapshot**
- Configure report parameters and click **Run**
- The status of any snapshots you have created is seen in the **Report Snapshots** frame

Report Snapshots			
Status	Start	End	User
Running	Dec 14, 2009 5:21:46 PM		itnadmin
Completed	Dec 14, 2009 5:19:57 PM	Dec 14, 2009 5:20:07 PM	itnadmin

To manually create a report snapshot that will be available for future retrieval, right-click the report name and select **Create Snapshot** from the menu. Configure essential report parameters and click **Run**. The status of created snapshots is seen beneath the report names in the **Report Snapshots** frame.

Defining report properties

- To edit report properties, right-click the report name and select **Properties**
- Edit report information as necessary
 - Template
 - Maximum number of saved snapshots
 - Maximum number of drill-through snapshots

Report Properties

*Display Name

Report Name

Design

Description

Keywords

Maximum Saved Snapshots

Maximum Levels Of Drill- through Snapshots

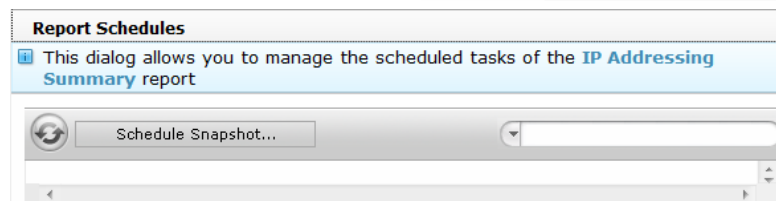
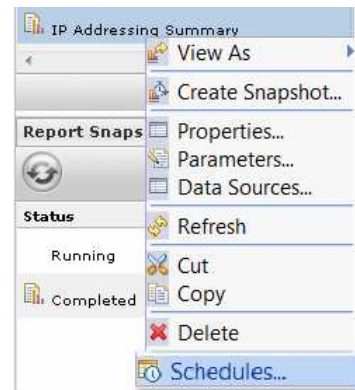
Save Cancel

To configure report properties, right-click the name of the report and select Properties from the menu. You can edit the display name of the report here. The value shown in the Design Box specifies a report template. If you change the value of the report template, make sure you preserve the forward slash at the beginning. Put any modified report templates in the same directory structure as the existing report templates. You can also specify here the maximum number of saved snapshots to keep on the hard disk; this can be a value between 1 and 20.

After the maximum number of saved snapshots has been reached, the oldest snapshots are deleted when a new snapshot is created. Many reports have clickable links in the report that you can click to see another level of report. You can specify here how many levels of drill-through snapshots are kept on the IBM Tivoli Network Manager server. After you modify the report properties, click the Save button. Changes do not take effect until the next time a report snapshot is created.

Scheduling a report snapshot

- Right-click a report name
- Select **Schedules** from the menu
- Click **Schedule Snapshot**
- Enter **Report Parameters**



To schedule a report snapshot to run automatically, right-click the report name. From the menu, select **Schedules**. Click **Schedule Snapshot** in the resulting window. The Create Report Schedule window opens, which has two tabs. The first tab is the **Report Parameters** tab where you configure the domain name and other applicable report parameters, as has been previously shown.

Scheduling a report snapshot (continued)

- Enter a name for the schedule
- Select the report frequency, run time, time zone, start and end date
- Select weekend option
- Click OK

Create Report Schedule

This dialog allows you to create a scheduled task for the **IP Addressing Summary** report

Report Parameters | **Schedule**

Schedule name:

Repeat schedule: every (number of days)

Run at time: Time zone:

Start date:

End date: ...

On weekend: Select

Include dates

- Run the schedule
- Skip the weekend
- Skip the weekend but run on the closest week day

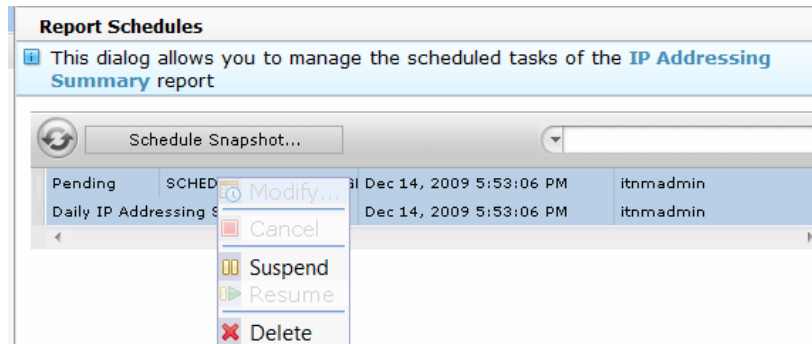
add

OK Cancel

After configuring **Report Parameters**, click the **Schedule** tab. Enter a name for the schedule that makes it easy for you to remember what the scheduled report will contain. Specify how often you want this schedule to run: once, hourly, daily, weekly, monthly, or yearly. Specify the time of the day you want the report snapshot to be created, and the applicable time zone. Enter the starting date for the schedule. Enter an ending date for the schedule. Leaving the end date blank causes scheduled reports to run indefinitely. Specify whether you want reports to run on the weekend. After selecting the schedule parameters, click OK to create the schedule.

Managing report schedules

- To view the schedule for any report, right-click the report and select **Schedules**
- In the **Report Schedules** window, right-click a scheduled report to view available management options
 - Modify
 - Cancel
 - Suspend
 - Resume
 - Delete



After you create a scheduled snapshot, the Report Schedules window is displayed. You can see a confirmation that your schedule was properly created. If you want to open the **Report Schedules** window for any report, right-click the applicable report name and then select **Schedules** from the menu. Right-click any schedule to display a list of available management options. You can modify, cancel, suspend, resume, or delete any schedule for this report. The Report Schedules window only shows the scheduled snapshots for a single report. You cannot view all scheduled report snapshots for all reports in this GUI.

Scheduling event-based reports

- Event-based reports require retrieval of event data from the ObjectServer
- The Network Manager administrator can run the **itnm_currentStatus** script to retrieve event data
 - This script creates a snapshot of current event data in the ObjectServer
 - Each time you want to create an event report, the **itnm_currentStatus** script must be run again to retrieve event data
 - If you want to schedule event-based reports, you can use a **cron** job to create periodic event snapshots without running the script manually

```
cd $TIPHOME/products/tnm/bin
./itnm_currentStatus -host localhost -user itnadmin -password
netcool
```

All asset-based reports in Tivoli Network Manager get information from the Network and Connectivity Inventory Model (NCIM) database. This data only changes when there is a new discovery. However, event data in the ObjectServer is constantly changing.

To report event data, run the **itnm_currentStatus** script. This script creates a stable snapshot of events on which to base the report. Each time you want a new event-based report, the script must be run again. To automate event snapshots, create a **cron** job to run this script automatically on a defined interval. The **cron** daemon reads a **crontab** file and executes the commands in that file according to the specified schedule. After scheduling the **itnm_currentStatus** command to retrieve event data, you can schedule an event-based report snapshot from the Tivoli Integrated Portal GUI.

Scheduling event-based reports (continued)

Create a **cron** job to run the **itnm_currentStatus** script

1. Log on to UNIX® or Linux® as the appropriate user to run cron jobs
2. Create a new crontab file using **crontab -e**
3. Enter the correct syntax for a crontab entry for itnm_currentStatus

```
0 8-17 * * 1-5 root
$TIPHOME/products/tnm/bin/itnm_currentStatus
-user itnmadmin -password netcool -host localhost
```

This example runs the script hourly between 8 a.m. and 5 p.m. Monday through Friday

4. Verify that **cron** sees the new entry with **crontab -l**

Your UNIX or Linux system administrator or root user can assist you in creating a **cron** job to run the **itnm_currentStatus** script. Crontab files are usually associated with specific users. The appropriate user can run the **crontab -e** command. This command creates a crontab file for that user.

This file contains a set of space-delimited numeric values followed by a username and then the command that will be run. The numeric fields represent from left to right: minute, hour, day of the month, month, and day of the week. In the example shown here, the script will run every hour between 8 AM and 5 PM, Monday through Friday. After creating the crontab file, the user can verify that the file was saved successfully by running the **crontab -l** command. The **cron** daemon will then run the commands specified in the crontab file at the scheduled times.

Scheduling event-based reports (continued)

- After you schedule the running of the **itnm_currentStatus** command, create the report schedule in the GUI the same way that you create the schedule for asset-based reports

Create Report Schedule

■ This dialog allows you to create a scheduled task for the **Unacknowledged Events by First Occurrence** report

Schedule

Schedule name:

Repeat schedule: hourly

every (number of hours) 1

Run at time: Time zone: (GMT-6:00) CST - Central Standard

Start date:

End date:

On weekend: Run the schedule

Include dates Exclude dates Preview

Report Schedules

■ This dialog allows you to manage the scheduled tasks of the **Unacknowledged Events by First Occurrence** report

Pending	SCHED_DIST_ACTION_GI	Dec 14, 2009 10:27:06 PM	itnadmin
	Unacknowledge Events	Dec 14, 2009 10:27:06 PM	itnadmin

After scheduling the running of the **itnm_currentStatus** script, you can schedule the event-based report. Do this in the same manner used to create a schedule for an asset-based report.

Summary

This module has demonstrated how to:

- View IBM Tivoli Network Manager asset reports
- Create a current event status report
- Schedule report snapshots
- Schedule event status reports

This module has demonstrated how to view IBM Tivoli Network Manager asset reports, create a current event status report, schedule report snapshots, and schedule event status reports.

Feedback

Your feedback is valuable

You can help improve the quality of IBM Education Assistant content to better meet your needs by providing feedback.

- Did you find this module useful?
- Did it help you solve a problem or answer a question?
- Do you have suggestions for improvements?

Click to send e-mail feedback:

mailto:iea@us.ibm.com?subject=Feedback_about_scheduling_reports.ppt

This module is also available in PDF format at: ./scheduling_reports.pdf

You can help improve the quality of IBM Education Assistant content by providing feedback.



Trademarks, disclaimer, and copyright information

IBM, the IBM logo, ibm.com, and Tivoli are trademarks or registered trademarks of International Business Machines Corp., registered in many jurisdictions worldwide. Other product and service names might be trademarks of IBM or other companies. A current list of other IBM trademarks is available on the Web at "[Copyright and trademark information](http://www.ibm.com/legal/copytrade.shtml)" at <http://www.ibm.com/legal/copytrade.shtml>

THE INFORMATION CONTAINED IN THIS PRESENTATION IS PROVIDED FOR INFORMATIONAL PURPOSES ONLY. WHILE EFFORTS WERE MADE TO VERIFY THE COMPLETENESS AND ACCURACY OF THE INFORMATION CONTAINED IN THIS PRESENTATION, IT IS PROVIDED "AS IS" WITHOUT WARRANTY OF ANY KIND, EXPRESS OR IMPLIED. IN ADDITION, THIS INFORMATION IS BASED ON IBM'S CURRENT PRODUCT PLANS AND STRATEGY, WHICH ARE SUBJECT TO CHANGE BY IBM WITHOUT NOTICE. IBM SHALL NOT BE RESPONSIBLE FOR ANY DAMAGES ARISING OUT OF THE USE OF, OR OTHERWISE RELATED TO, THIS PRESENTATION OR ANY OTHER DOCUMENTATION. NOTHING CONTAINED IN THIS PRESENTATION IS INTENDED TO, NOR SHALL HAVE THE EFFECT OF, CREATING ANY WARRANTIES OR REPRESENTATIONS FROM IBM (OR ITS SUPPLIERS OR LICENSORS), OR ALTERING THE TERMS AND CONDITIONS OF ANY AGREEMENT OR LICENSE GOVERNING THE USE OF IBM PRODUCTS OR SOFTWARE.

© Copyright International Business Machines Corporation 2010. All rights reserved.