

---

# LanguageWare Resource Workbench 7.2

## Create an ICA connection file



© Copyright International Business Machines Corporation 2011. All Rights Reserved.  
US Government Users Restricted Rights - Use, duplication or disclosure restricted by GSA ADP Schedule  
Contract with IBM Corp.

## Introduction

- **Module overview**
  - How to create and configure an ICA connection file
  - Best practices
- **Target audience:**
  - All audiences
- **Prerequisites:**
  - Installed LRW with a project created.
  - Installed and configured ICA server available.
  - User ID and password to access the ICA server.
  - At least a collection created on the ICA server for it to display and be available.
- **Version Release Date:** LRW 7.2, ICA 2.2, released October, 2010

## Module objectives

After this module you will be able to:

- Create an ICA configuration file.
- Update the collections displayed on the ICA server.
- Troubleshoot simple errors connecting to the ICA server.

## Module roadmap

- **ICA configuration file**
  - What is it?
  - How to configure and use it?
- Summary and best practices
- Sample exercises

## ICA configuration file

### What is it?

- In order to connect from the LRW to the ICA server, you need an ICA configuration file.
- If you want to use a UIMA pipeline that has been created within the LRW in an IBM Content Analytics (ICA) Server, first you need to create an ICA configuration file as connection to the ICA server.
- Once you can connect from the LRW to the ICA server, the UIMA pipeline can be exported as a PEAR file to be deployed onto the ICA server. This will allow text files on the ICA server to be annotated using this UIMA pipeline.
- The ICA configuration file is a file with extension .icaconfig, which contains the required information to access the relevant ICA server.

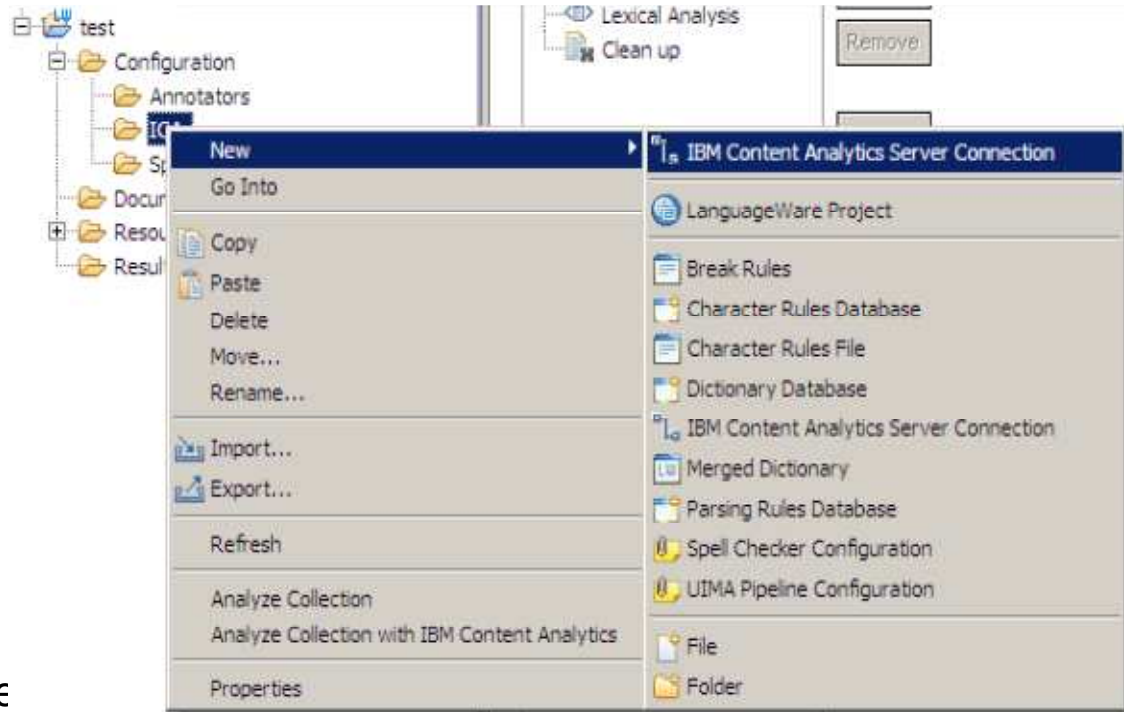
## ICA configuration file

### How to configure and use it?

- The ICA server host name, user ID and password to access the ICA server need to be provided.
- When the connection to the ICA server is successfully established, existent collections on the server will display.

## How to create an ICA server connection and configure it:

- From the LRW workspace.
- Select the relevant Project.
- Open the Configuration folder.
- Open the ICA folder and right-click it.
- Select New and IBM Content Analytics Server Connection option.
- Give a relevant name to the connection file and click Finish.



## How to create an ICA server connection and configure it:

- Type in the ICA server's host name, User ID and password.
- Leave the default information displayed for other fields, for example: port number.
- Click the **Update** button and the Collections available should display. It will show any existent collections found on the ICA server.
- Save the server connection file (.icaconfig) with a name. No errors should display after you save this configuration file with the details you provided.

**Server**  
IBM Content Analytics server connection

Host Name:  Port:

Admin Port:  Time Out:

User Id:  Password:

**Collections**  
Collections available

- coll111
- test

**Collection**  
Collection details

Name:

Id:



## How to create an ICA server connection and configure it:

- Click the **Update** button to display all existent collections on the ICA server.
- Clicking the **Update** button at any time will update any new collections that may have been created or updated on the ICA server since last time the server was accessed.
- Click the **Remove** button to remove from this view any collections not being used or you do not want to display.
- When selecting a collection, it will display the name and ID of that collection on the ICA server.

**Server**  
IBM Content Analytics server connection

Host Name:  Port:

Admin Port:  Time Out:

User Id:  Password:

**Collections**  
Collections available

<input checked="" type="checkbox"/> coll111	<input type="button" value="Update"/>
<input type="checkbox"/> test	<input type="button" value="Remove"/>

**Collection**  
Collection details

Name:

Id:

## Module roadmap

- **ICA configuration file**
  - What is it?
  - How to configure and use it?
- **Summary and best practices**
- **Sample exercises**

## Module summary

You have completed this course and can:

- Create and configure an ICA connection file
- Connect to the ICA server and view existing collections.
- Troubleshoot basic connection problems

See the LanguageWare® help for more tips and advanced use cases.

## Best practices

- Clicking on the Update button on the ICA connection file will reflect the latest updates in the collections found on the ICA server.
- Save your changes or updates and exit the ICA configuration file (the \* wildcard displaying by the file name indicates the file is still in Edit mode) before using the ICA connection.
- In case the connection to the ICA server failed, try connecting directly to the ICA server administration page: for example  
<http://icaserver.ibm.com:8390/ESAdmin/collections.do?command=display>
- If the ICA's server administration page was not available when trying to access it directly, contact the ICA server's administrator.

## Module roadmap

- **ICA configuration file**
  - What is it?
  - How to configure and use it?
- **Summary and best practices**
- **Sample exercises**

## Practice exercises

- Create an ICA server connection to the available ICA server using the details provided (server name, user ID and password).
- Display the existent collections on the ICA server using the Update button.

## Contacts

- If you have any questions, comments or suggestions, contact us using the LanguageWare email address [EMEALAN@ie.ibm.com](mailto:EMEALAN@ie.ibm.com) or on the developerWorks® forum.

## Trademarks, copyrights, and disclaimers

IBM, the IBM logo, ibm.com, developerWorks, and LanguageWare are trademarks or registered trademarks of International Business Machines Corp., registered in many jurisdictions worldwide. Other product and service names might be trademarks of IBM or other companies. A current list of other IBM trademarks is available on the web at "[Copyright and trademark information](http://www.ibm.com/legal/copytrade.shtml)" at <http://www.ibm.com/legal/copytrade.shtml>

Other company, product, or service names may be trademarks or service marks of others.

THE INFORMATION CONTAINED IN THIS PRESENTATION IS PROVIDED FOR INFORMATIONAL PURPOSES ONLY. WHILE EFFORTS WERE MADE TO VERIFY THE COMPLETENESS AND ACCURACY OF THE INFORMATION CONTAINED IN THIS PRESENTATION, IT IS PROVIDED "AS IS" WITHOUT WARRANTY OF ANY KIND, EXPRESS OR IMPLIED. IN ADDITION, THIS INFORMATION IS BASED ON IBM'S CURRENT PRODUCT PLANS AND STRATEGY, WHICH ARE SUBJECT TO CHANGE BY IBM WITHOUT NOTICE. IBM SHALL NOT BE RESPONSIBLE FOR ANY DAMAGES ARISING OUT OF THE USE OF, OR OTHERWISE RELATED TO, THIS PRESENTATION OR ANY OTHER DOCUMENTATION. NOTHING CONTAINED IN THIS PRESENTATION IS INTENDED TO, NOR SHALL HAVE THE EFFECT OF, CREATING ANY WARRANTIES OR REPRESENTATIONS FROM IBM (OR ITS SUPPLIERS OR LICENSORS), OR ALTERING THE TERMS AND CONDITIONS OF ANY AGREEMENT OR LICENSE GOVERNING THE USE OF IBM PRODUCTS OR SOFTWARE.

© Copyright International Business Machines Corporation 2011. All rights reserved.