

IBM Maximo Asset Management V7.5

Using the Report List portlet



© 2013 IBM Corporation

In this training module, users of Maximo® Asset Management V7.1.1.4 and higher and Maximo V7.5.1 and higher learn how to set up and use a Report List portlet on Start Center.

Objectives

When you complete this module, you can perform these tasks:

- Enable the Report List portlet in the Security Group application
- Configure security rights to the Report List portlet
- Add a Report List portlet to Start Center
- Add a report to the new portlet
- Run the report from the portlet

When you complete this module, you can perform these tasks. Configure security rights to the Report List portlet. Add a Report List portlet to Start Center. Add a report to the new portlet. Run the report from the portlet.

Enabling the Report List portlet

To use the Report List portlet, you must install the package file that IBM provides. Without it, you cannot add the Report List portlet to any Start Center because it is not an option in Security Group module.

You can obtain the package file and step-by-step instructions on how to install it from this link:

<http://www-01.ibm.com/support/docview.wss?uid=swg21380495>

Note: *This training module does not describe the actual installation of this package file.*

The first thing required, before you can assign security to the portlet, is to enable the portlet in the Security Group application. You must download a separate package file from the Support site and install it on the Maximo server. This package file and installation instructions are found at the web address shown on this page.

The installation steps and potential issues encountered while installing the package file are not included in this training module. This training begins from the successful installation of that package.

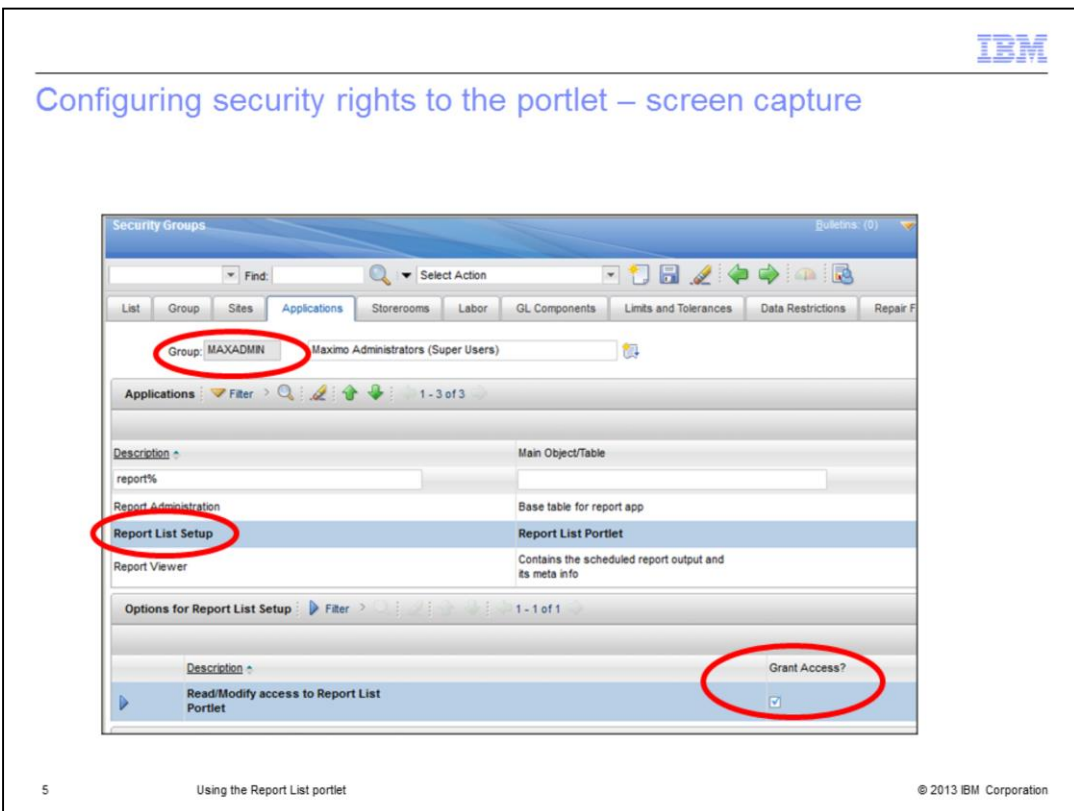
Configuring security rights to the portlet - instructions

To enable the Report List portlet, security rights must be granted to each Security Group that uses this function. To set the permissions, follow these steps:

1. Open the Security Groups application
2. Select the desired security group. On the **Applications** tab, in the Description field, enter **report list** as the search text.
3. When the search results return, select the Report List Setup application, which is the one for the Report List portlet
4. For "Read/Modify access to Report List Portlet", click Grant Access and save
5. Sign out and sign back in to refresh the settings

Before you can use a Report List portlet on Start Center, you must first grant proper security to the user group. The steps are described on this slide and a screen capture is provided on the next slide.

Configuring security rights to the portlet – screen capture

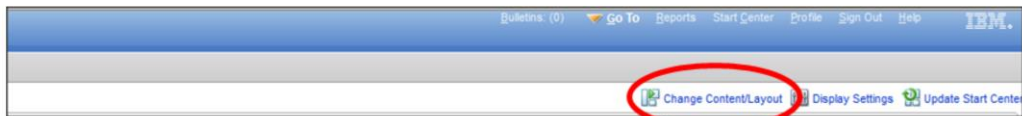


This is a screen capture of the Security Groups application. In this example, in the Group field, the MAXADMIN group was chosen. On the Applications tab, in the Description field, the filter string 'report%' was used. In the search results, the Report List Setup application was selected – this is the one for the Report List portlet. In the 'Options for Report List Setup' section at the bottom of the screen, there is 'Read/Modify access to Report List Portlet'. Check the box labeled 'Grant Access'. Then save and log out and back in to refresh your settings.

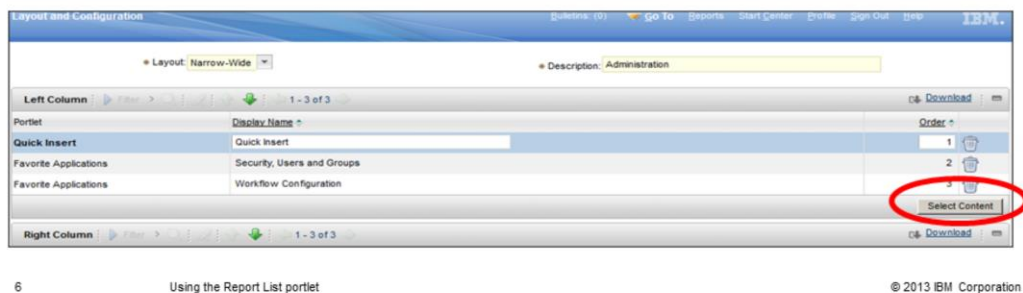
Adding the portlet to Start Center (1 of 2)

To enable the Report List portlet, follow these steps:

1. Click the Change Content/Layout option



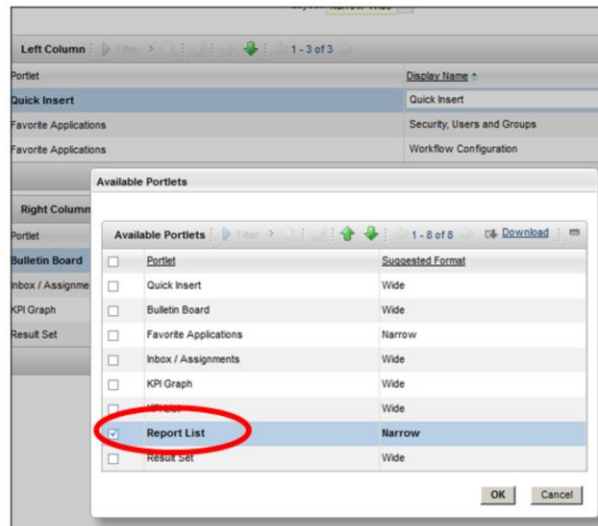
2. In the Layout and Configuration application, click **Select Content** for either the left or right column



To add the Report List portlet to Start Center, click the Change Content/Layout option, as shown on the top half of this slide. This launches the Layout and Configuration screen, as shown on the bottom half of this slide. You can use the Report List portlet in either a narrow or wide layout and you can use it in the left column, right column, or both of your Start Center. In this example, the portlet is added to the left column, which has a narrow format. Click the **Select Content** button for the column where you want to add the portlet.

Adding the portlet to Start Center (2 of 2)

3. From the list of available portlets, select **Report List**



7

Using the Report List portlet

© 2013 IBM Corporation

This launches a window containing the list of available portlets. Check the box for Report List and click OK. You have now added this portlet to your Start Center.

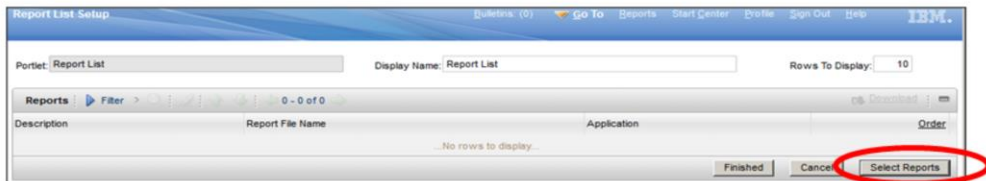
Adding a report to the portlet (1 of 2)

1. Click the Edit icon



Initially, the portlet is empty

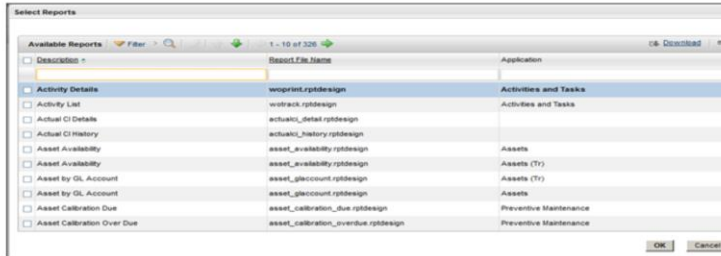
2. Click **Select Reports**



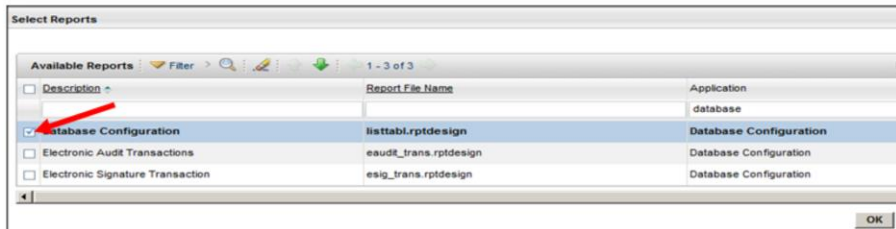
Now that the Report List portlet appears in Start Center, you can add reports to it. Click the Edit icon, which looks like a pencil. On the Report List Setup page, push the **Select Reports** button.

Adding a report to the portlet (2 of 2)

The list contains the reports that you have the security rights to run



3. Select the report or reports and click **OK**



9

Using the Report List portlet

© 2013 IBM Corporation

The list contains all of the reports that you have access to. In this example, you have access to 326 reports. Select the reports that you want to add to the Report List portlet. In this example, the Database Configuration report was chosen.

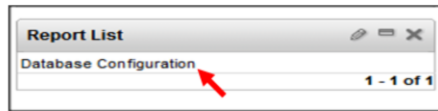
Caution about adding a report to the portlet

Do not add reports that do not have parameters to the Report List portlet. If a report has no parameters, it runs against every record in the associated table. Maximo does not have a filter to pass to the report. This process has a serious impact on your database.

Be aware that if you add a report that has no parameters, it runs against all records in the table, which can have a significant impact on your database. In most cases, for the Report List portlet, you only want to select reports that have request pages.

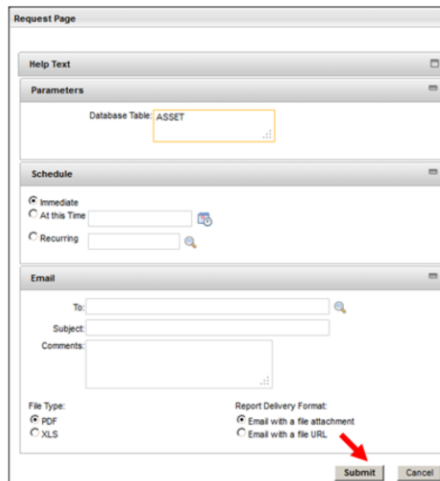
Running the report from the portlet

1. Click the report that you want to run



The screenshot shows a portlet titled "Report List" with a search icon and a close icon. Below the title is a list of reports, with "Database Configuration" highlighted. A red arrow points to the text "Database Configuration". To the right of the list, it says "1 - 1 of 1".

2. Complete the request page and click **Submit**



The screenshot shows the "Request Page" form. It has several sections: "Help Text" (collapsed), "Parameters" (with a text box containing "ASSET" and a search icon), "Schedule" (with radio buttons for "Immediate", "At this Time", and "Recurring", each with a corresponding input field and a search icon), and "Email" (with fields for "To:", "Subject:", and "Comments:"). At the bottom, there are two groups of radio buttons: "File Type" (with "PDF" and "XLS" options) and "Report Delivery Format" (with "Email with a file attachment" and "Email with a file URL" options). A red arrow points to the "Submit" button at the bottom right, next to a "Cancel" button.

Run the report from the portlet by clicking the report description. The standard Maximo request page opens. Enter the required parameters and click the **Submit** button. The report opens in the Report viewer.

Summary

Now that you have completed this module, you are able to perform these tasks:

- Enable the Report List portlet in the Security Groups application
- Configure security rights to the Report List portlet
- Add the Report List portlet to Start Center
- Add a report to the portlet
- Run the report from the portlet

You can now perform all of the steps necessary to add the Report List portlet to your Start Center so that you have quick access to your common reports.

There are five steps. Enable the Report List portlet in the Security Groups application. Configure security privileges to the portlet. Add the Report List portlet to Start Center. Add a report to the portlet. Run a report from the portlet.

Useful links

- Maximo landing page:
<http://www-1.ibm.com/support/docview.wss?uid=swg21418666>

- BiLog: Report List Portlet
<http://ibm.co/otod3K>

- Reporting Feature Guide
V7.1 <https://www-304.ibm.com/support/entdocview.wss?uid=swg21305020>
V7.5 <https://www-304.ibm.com/support/entdocview.wss?uid=swg21498433>

For more information, see these pages.

Trademarks, disclaimer, and copyright information

IBM, the IBM logo, ibm.com, and Maximo are trademarks or registered trademarks of International Business Machines Corp., registered in many jurisdictions worldwide. Other product and service names might be trademarks of IBM or other companies. A current list of other IBM trademarks is available on the web at "[Copyright and trademark information](http://www.ibm.com/legal/copytrade.shtml)" at <http://www.ibm.com/legal/copytrade.shtml>

Other company, product, or service names may be trademarks or service marks of others.

THE INFORMATION CONTAINED IN THIS PRESENTATION IS PROVIDED FOR INFORMATIONAL PURPOSES ONLY. WHILE EFFORTS WERE MADE TO VERIFY THE COMPLETENESS AND ACCURACY OF THE INFORMATION CONTAINED IN THIS PRESENTATION, IT IS PROVIDED "AS IS" WITHOUT WARRANTY OF ANY KIND, EXPRESS OR IMPLIED. IN ADDITION, THIS INFORMATION IS BASED ON IBM'S CURRENT PRODUCT PLANS AND STRATEGY, WHICH ARE SUBJECT TO CHANGE BY IBM WITHOUT NOTICE. IBM SHALL NOT BE RESPONSIBLE FOR ANY DAMAGES ARISING OUT OF THE USE OF, OR OTHERWISE RELATED TO, THIS PRESENTATION OR ANY OTHER DOCUMENTATION. NOTHING CONTAINED IN THIS PRESENTATION IS INTENDED TO, NOR SHALL HAVE THE EFFECT OF, CREATING ANY WARRANTIES OR REPRESENTATIONS FROM IBM (OR ITS SUPPLIERS OR LICENSORS), OR ALTERING THE TERMS AND CONDITIONS OF ANY AGREEMENT OR LICENSE GOVERNING THE USE OF IBM PRODUCTS OR SOFTWARE.

© Copyright International Business Machines Corporation 2013. All rights reserved.