

IBM Maximo Asset Management V7.5, Installing IBM Maximo Asset Management

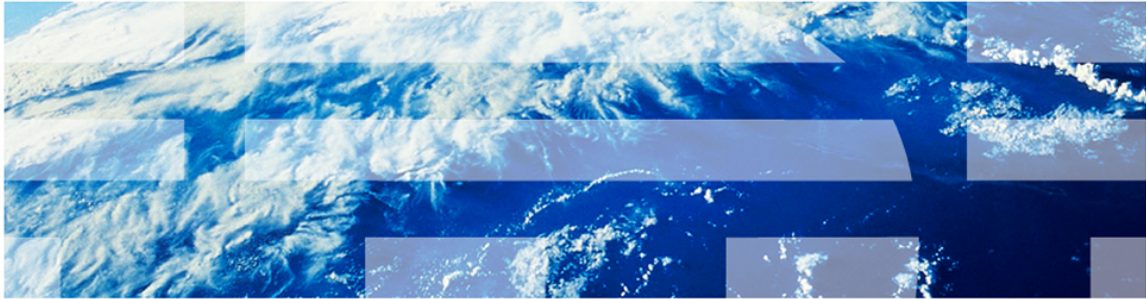
Slide 1

Tivoli

IBM

IBM Maximo Asset Management V7.5

Installing IBM Maximo Asset Management V7.5



This is a self-running demonstration that shows you how to complete a task.
Controls are available at the bottom of the screen.

© Copyright IBM Corporation 2012. All rights reserved.

IBM Maximo Asset Management V7.5, Installing IBM Maximo Asset Management

Slide 2



Objectives

When you complete this unit, you can perform these tasks:

- Use the IBM Maximo Asset Management launchpad to install IBM Maximo Asset Management version 7.5 on a Microsoft Windows administrative workstation
- Configure security settings to utilize internal Maximo Asset Management authentication of users
- Create and configure a database for use with IBM Maximo Asset Management

IBM Maximo Asset Management V7.5, Installing IBM Maximo Asset Management

Slide 3



Assumptions

- ▣ These pre-installation steps were performed successfully:
 - Downloading IBM Maximo Asset Management launchpad, which includes two packages from your IBM Passport Advantage account
 - Uncompressing the downloaded packages into a single directory

IBM Maximo Asset Management V7.5, Installing IBM Maximo Asset Management

Slide 4

Maximo Asset Management

Select a language: English OK

Maximo Asset Management

Welcome
Installation Planning
Install Product
Information Center
Exit

IBM Maximo Asset Management 7.5 Installation

1. Install the middleware (Optional)
Click on this link to verify that you meet the requirements to install the
[Verify installation requirements](#)
Select the Optional Middleware Link first only if you want to have the DB2 Database, the IBM WebSphere Application Server or the Tivoli Directory Server installed and Configured. All other databases and Web Applications servers (e.g. BEA Weblogic, Oracle, SQL Server) must be installed manually prior to the installation of IBM Maximo Asset Management.
[Middleware](#)
2. Install IBM Maximo Asset Management 7.5 (Required)
Select Maximo Asset Management below
[Maximo Asset Management](#)

From the launchpad, select **Maximo Asset Management** to begin the installation of IBM Maximo Asset Management version 7.5.

Select **Maximo Asset Management**.

IBM.

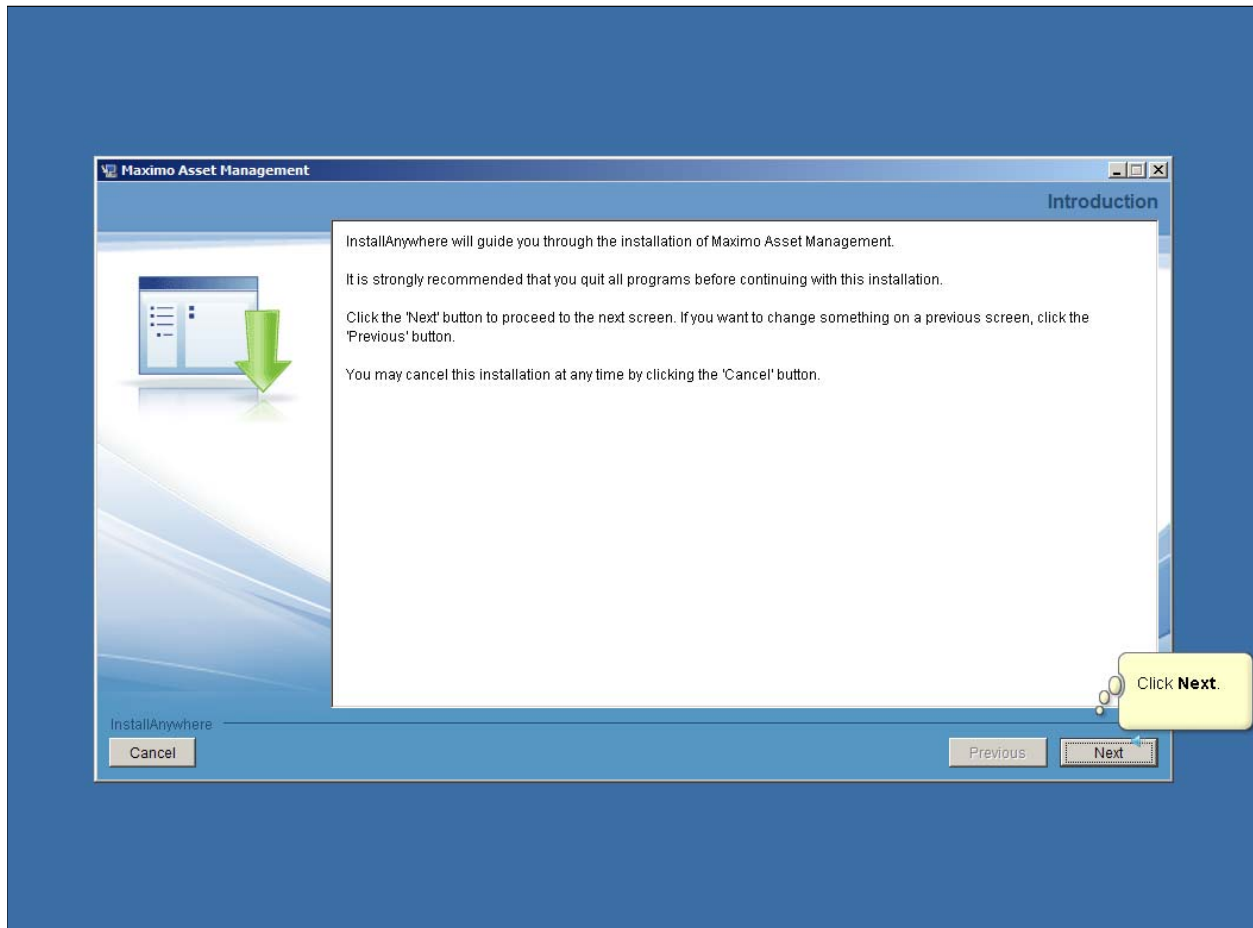
IBM Maximo Asset Management V7.5, Installing IBM Maximo Asset Management

Slide 5



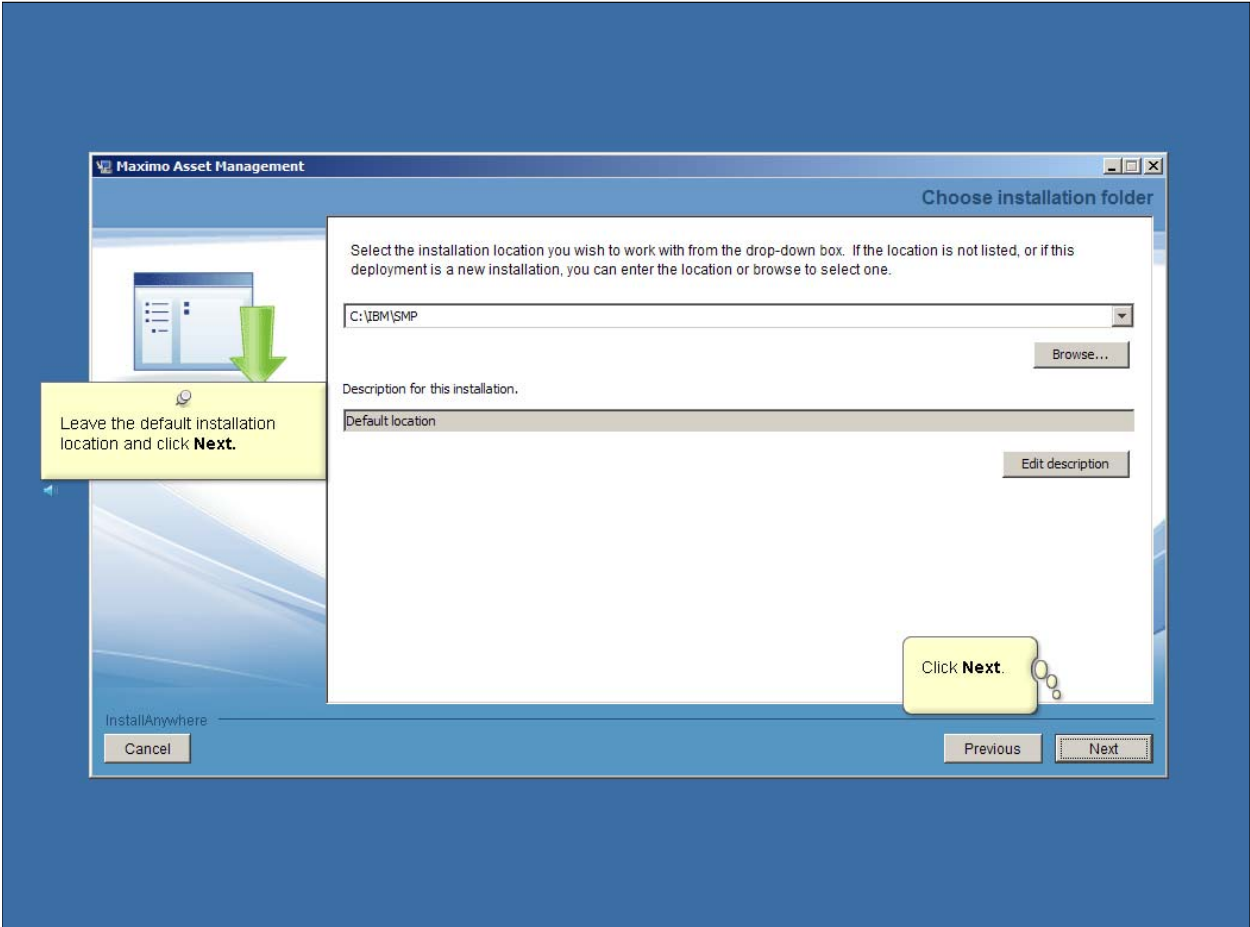
IBM Maximo Asset Management V7.5, Installing IBM Maximo Asset Management

Slide 6



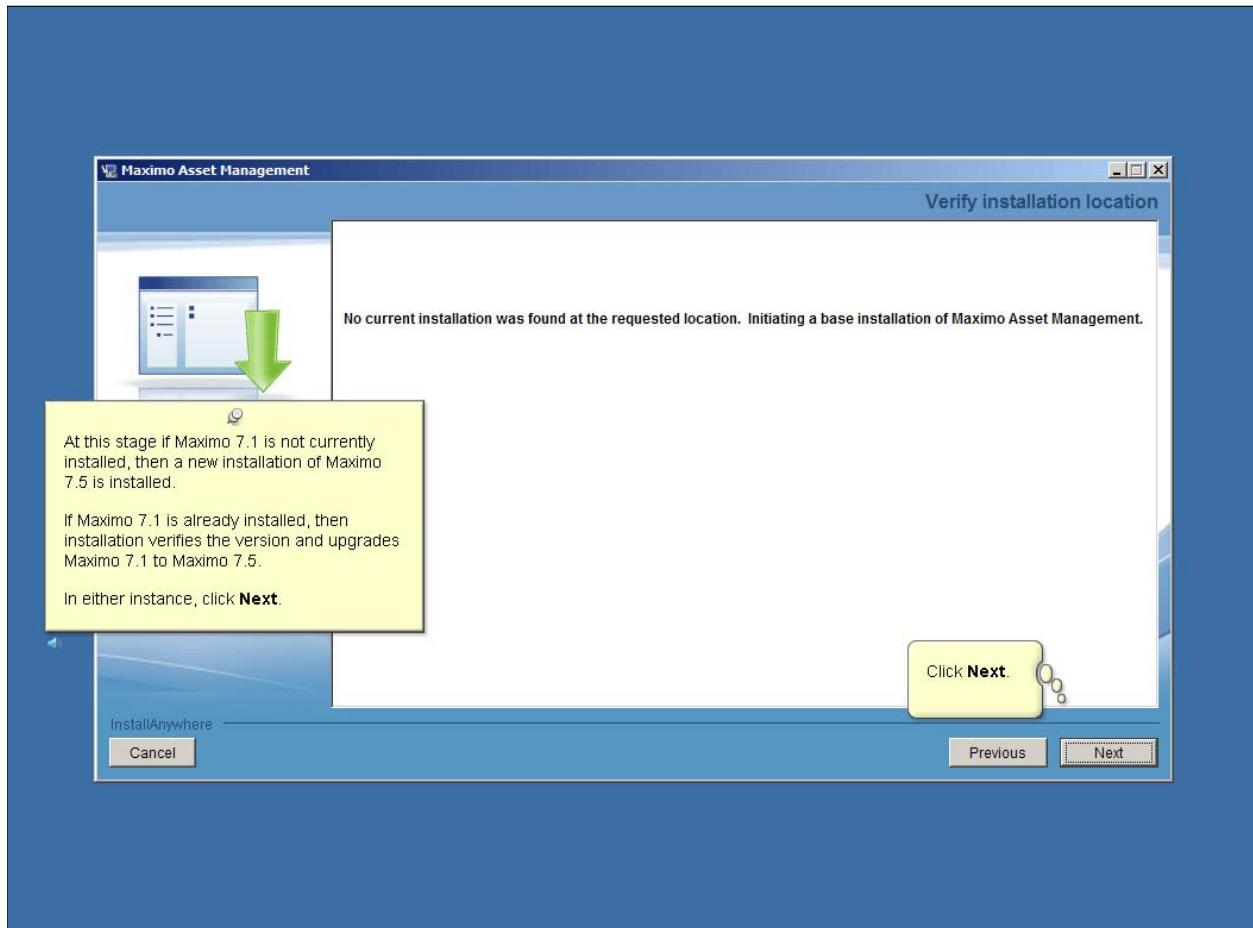
IBM Maximo Asset Management V7.5, Installing IBM Maximo Asset Management

Slide 7



IBM Maximo Asset Management V7.5, Installing IBM Maximo Asset Management

Slide 8



IBM Maximo Asset Management V7.5, Installing IBM Maximo Asset Management

Slide 9

The screenshot shows the 'Package Summary' window in the Maximo Asset Management installer. The window title is 'Maximo Asset Management' and the subtitle is 'Package Summary'. The main text area contains the following information:

The installer has completed the analysis of the packages associated with the offering.

There is no existing instance of any of the offering's packages installed at any version. The installer will initiate a sequence of install and update actions to deploy all the packages at the target version required for the offering.

Packages Analyzed

	Package Name	Target Version	Installed Version	Analysis
▶	process automation engine Package	7.5.0.0	Not Installed	Will deploy to target version.
▶	Maximo Asset Management Package	7.5.0.0	Not Installed	Will deploy to target version.

At the bottom of the window, there are 'Previous' and 'Next' buttons. A yellow callout box on the left side of the window contains the following text:

Your system is scanned, which might take a few minutes to complete. In the Package Summary window, you see any installed versions of Maximo Asset Management, the target version of Maximo Asset Management, and Tivoli's process automation engine 7.5.

Click **Next**.

Another yellow callout box with a mouse cursor points to the 'Next' button, with the text 'Click Next.'

IBM Maximo Asset Management V7.5, Installing IBM Maximo Asset Management

Slide 10

The screenshot shows the 'Software License Agreement' window for IBM Maximo Asset Management. The window title is 'Maximo Asset Management' and the subtitle is 'Software License Agreement'. The main text area contains the following text:

Please read the following license agreement carefully.

International Program License Agreement

Part 1 - General Terms

BY DOWNLOADING, INSTALLING, COPYING, ACCESSING, CLICKING ON AN "ACCEPT" BUTTON, OR OTHERWISE USING THE PROGRAM, LICENSEE AGREES TO THE TERMS OF THIS AGREEMENT. IF YOU ARE ACCEPTING THESE TERMS ON BEHALF OF LICENSEE, YOU REPRESENT AND WARRANT THAT YOU HAVE FULL AUTHORITY TO BIND LICENSEE TO THESE TERMS. IF YOU DO NOT AGREE TO THESE TERMS,

- DO NOT DOWNLOAD, INSTALL, COPY, ACCESS, CLICK ON AN "ACCEPT" BUTTON, OR USE THE PROGRAM; AND

- PROMPTLY RETURN THE UNUSED MEDIA, DOCUMENTATION, AND PROOF OF ENTITLEMENT TO THE PARTY FROM WHOM IT WAS OBTAINED, AND A REFUND OF THE AMOUNT PAID, IF THE

At the bottom of the text area, there are three radio button options:

- Read Non-IBM Terms
- I accept both the IBM and the non-IBM terms.
- I do not accept the terms in the license agreement.

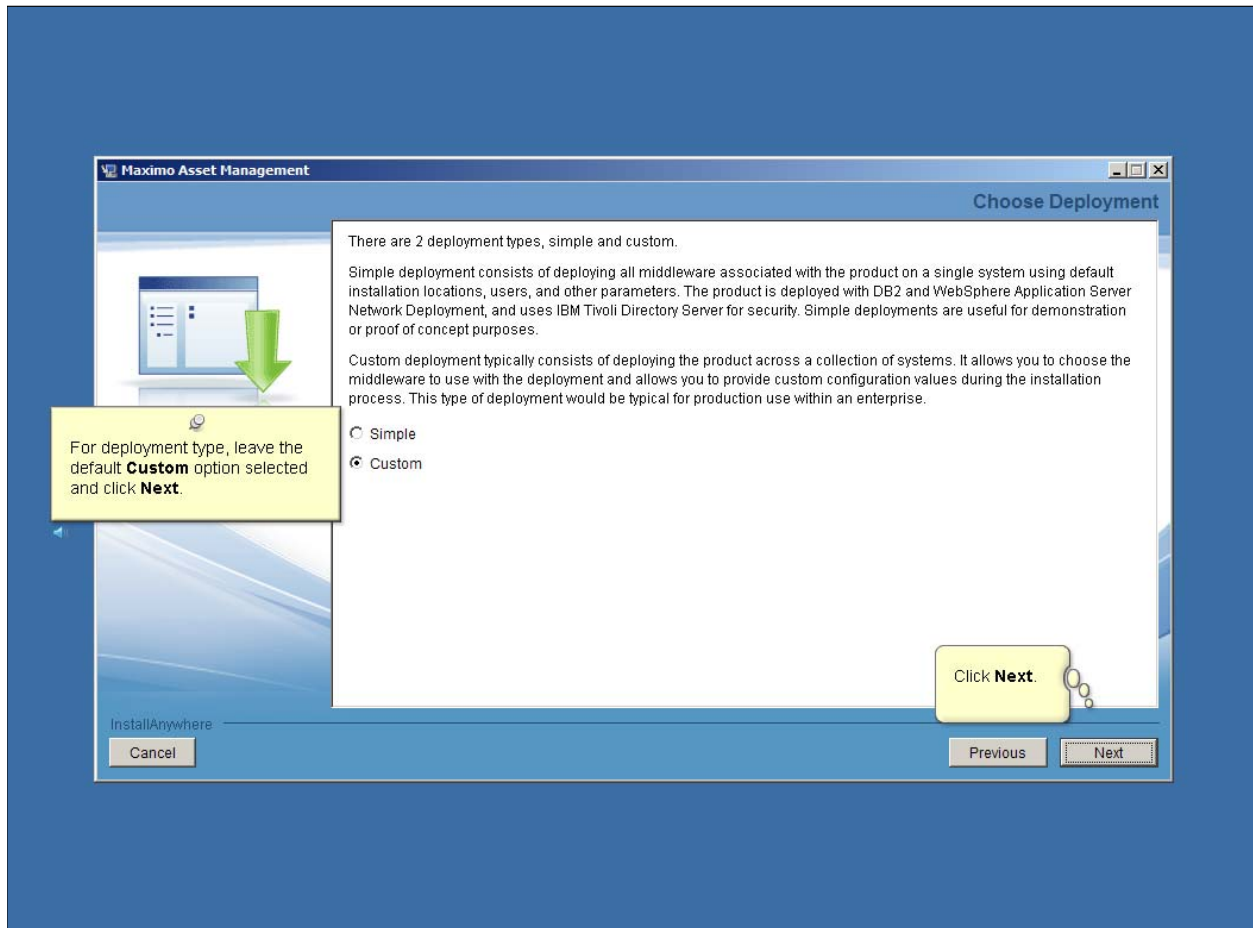
Below the radio buttons is a 'Print' button. At the bottom of the window, there are 'Cancel', 'Previous', and 'Next' buttons. The 'InstallAnywhere' logo is visible in the bottom left corner.

Instructional callouts include:

- A yellow box on the left with a green arrow pointing to the license agreement text, containing the text: "For the license agreement, select **I accept both IBM and non-IBM terms** and click **Next**."
- A yellow box pointing to the selected radio button with the text: "Select **I accept**."
- A yellow box pointing to the 'Next' button with the text: "Click **Next**."

IBM Maximo Asset Management V7.5, Installing IBM Maximo Asset Management

Slide 11



IBM Maximo Asset Management V7.5, Installing IBM Maximo Asset Management

Slide 12

Maximo Asset Management Import Middleware Configuration Information

If the middleware installation program was not used to install and configure the middleware, click Next. Check this box to import the configuration information recorded by the middleware installation program. Provide the information for the server where the middleware installation workspace is located. Enter a fully qualified host name or IP address. The user ID must have remote access privileges to the server.

Import middleware configuration information

Host name

User ID

Password

Confirm password

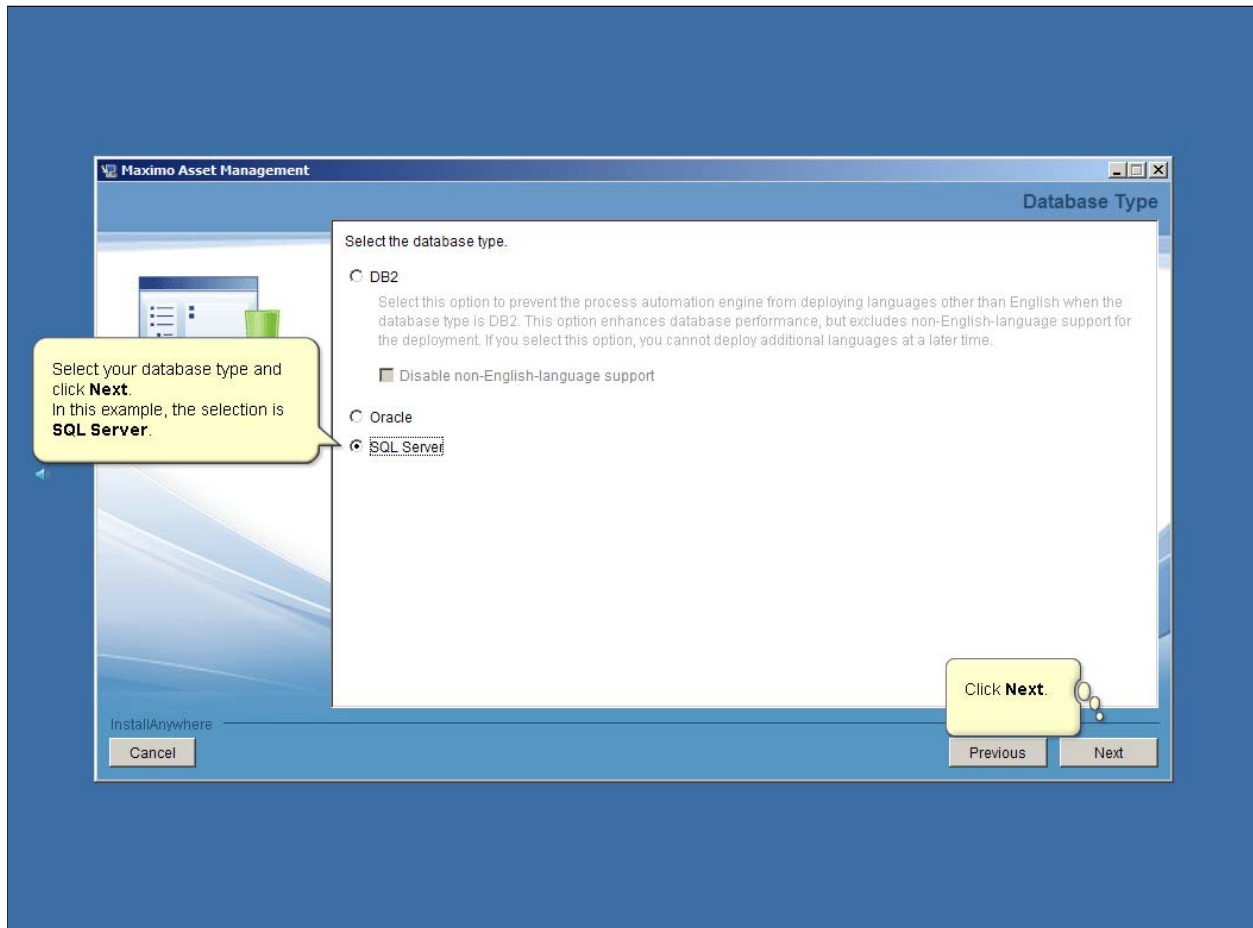
Workspace location

InstallAnywhere

If you installed the middleware on this server, you can click **Next**. Otherwise, provide the required values to the middleware (WebSphere) server and click **Next**.

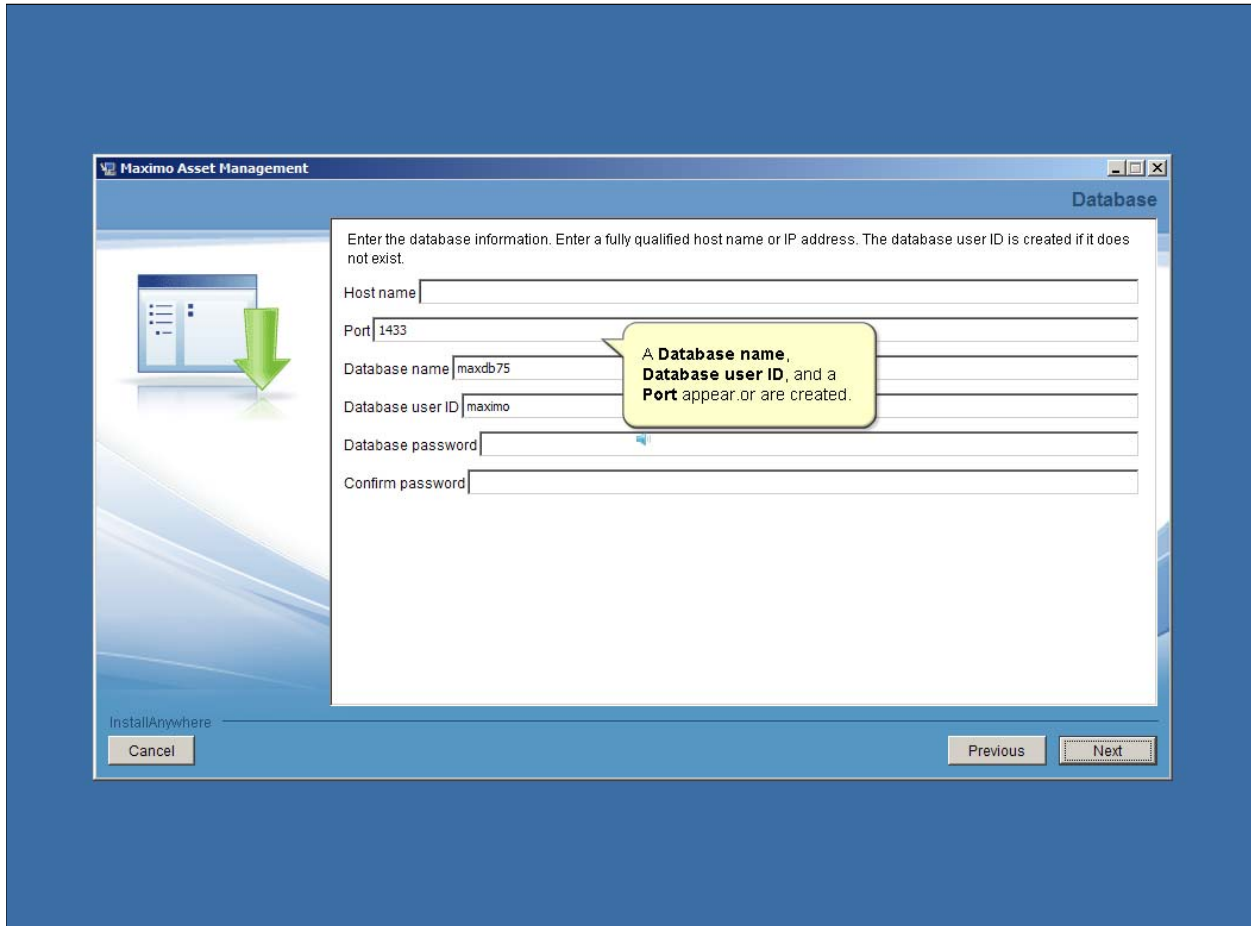
IBM Maximo Asset Management V7.5, Installing IBM Maximo Asset Management

Slide 13



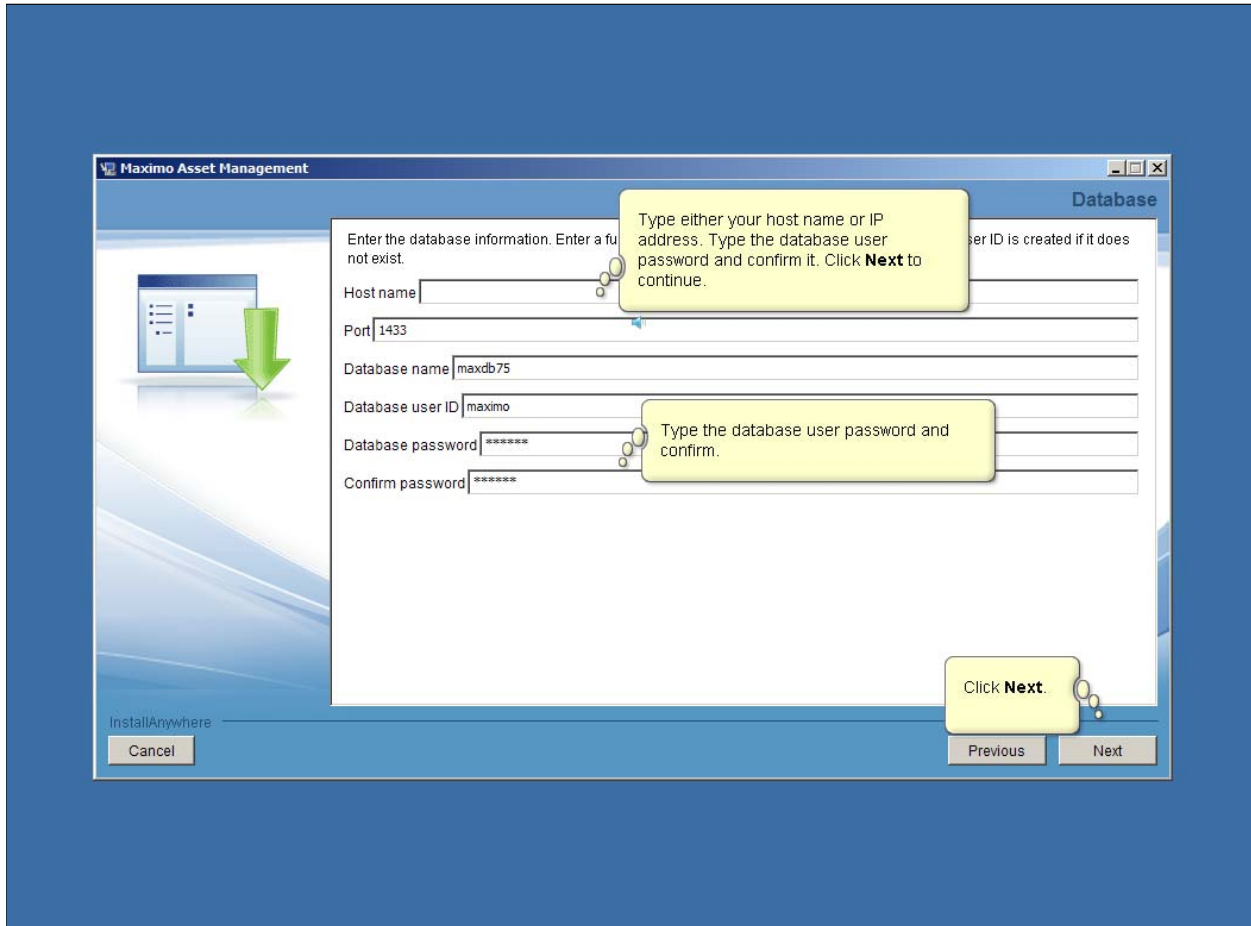
IBM Maximo Asset Management V7.5, Installing IBM Maximo Asset Management

Slide 14



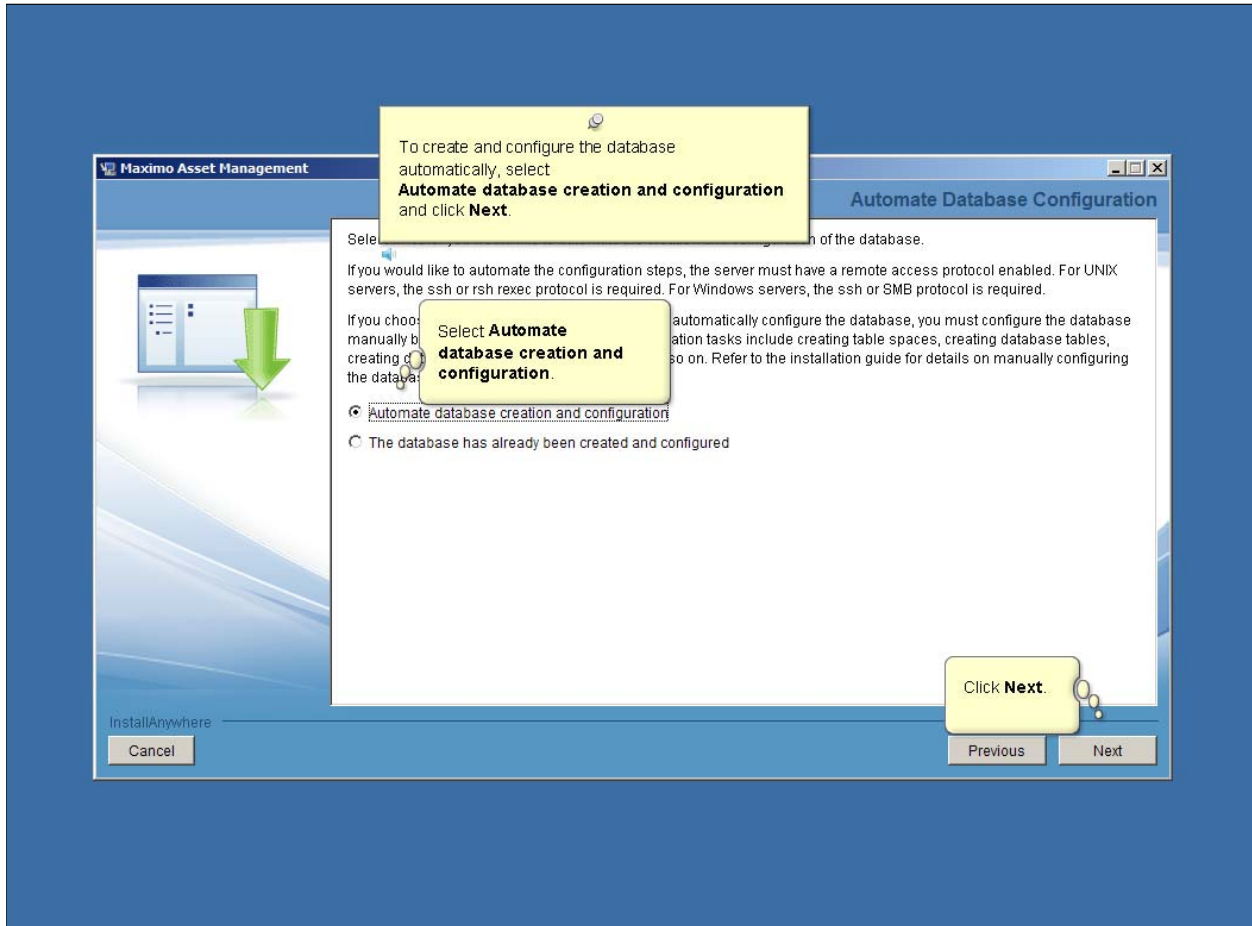
IBM Maximo Asset Management V7.5, Installing IBM Maximo Asset Management

Slide 15



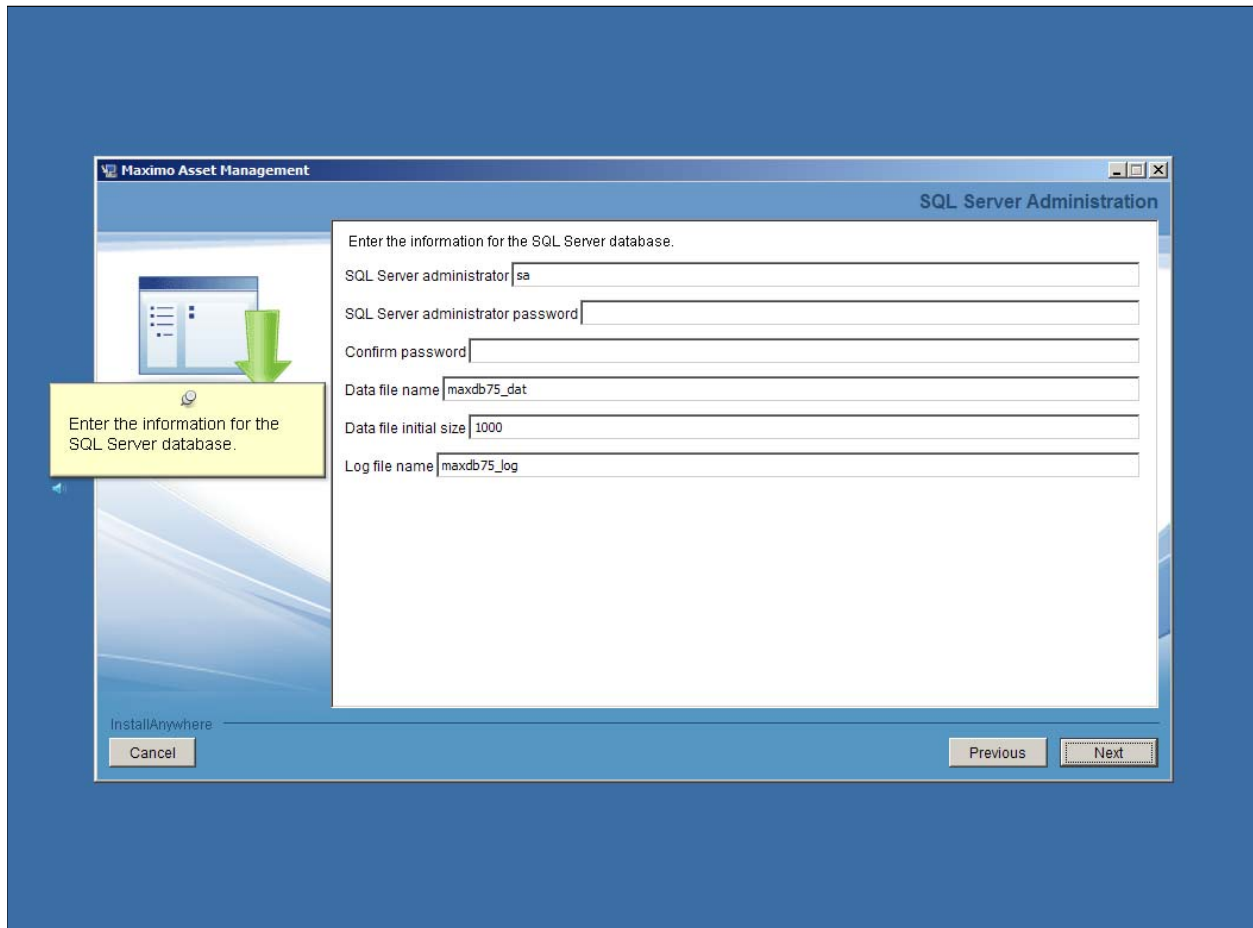
IBM Maximo Asset Management V7.5, Installing IBM Maximo Asset Management

Slide 16



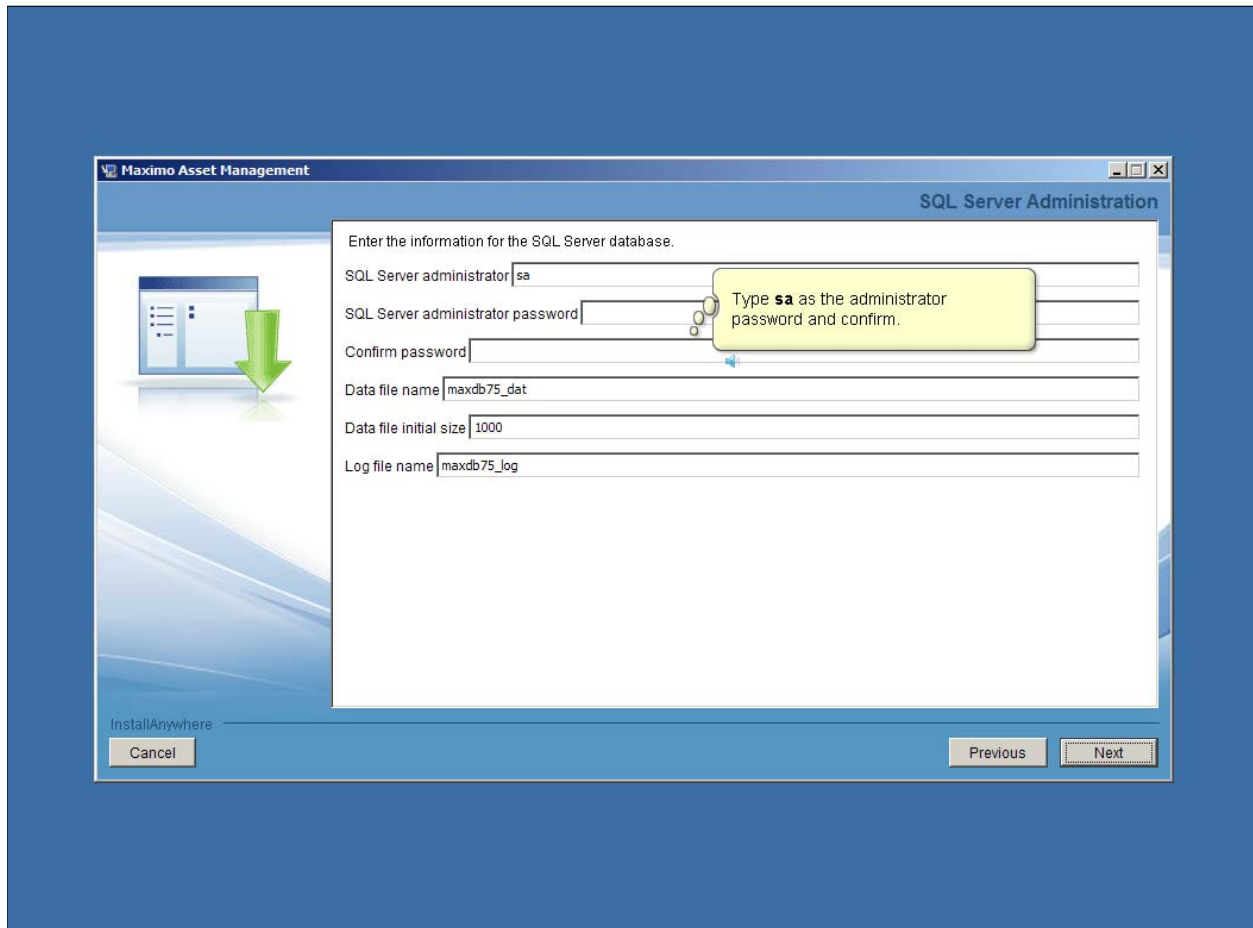
IBM Maximo Asset Management V7.5, Installing IBM Maximo Asset Management

Slide 17



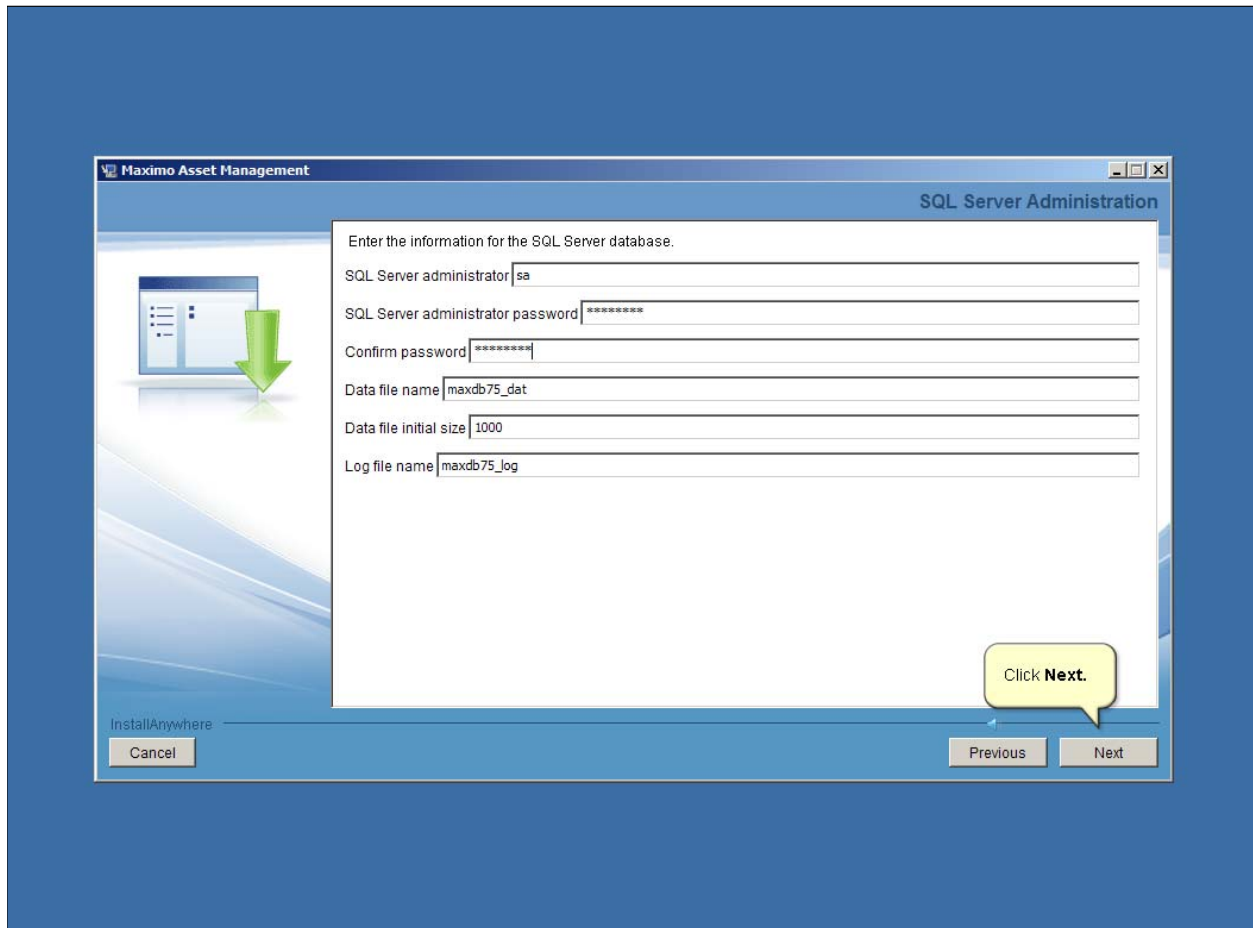
IBM Maximo Asset Management V7.5, Installing IBM Maximo Asset Management

Slide 18



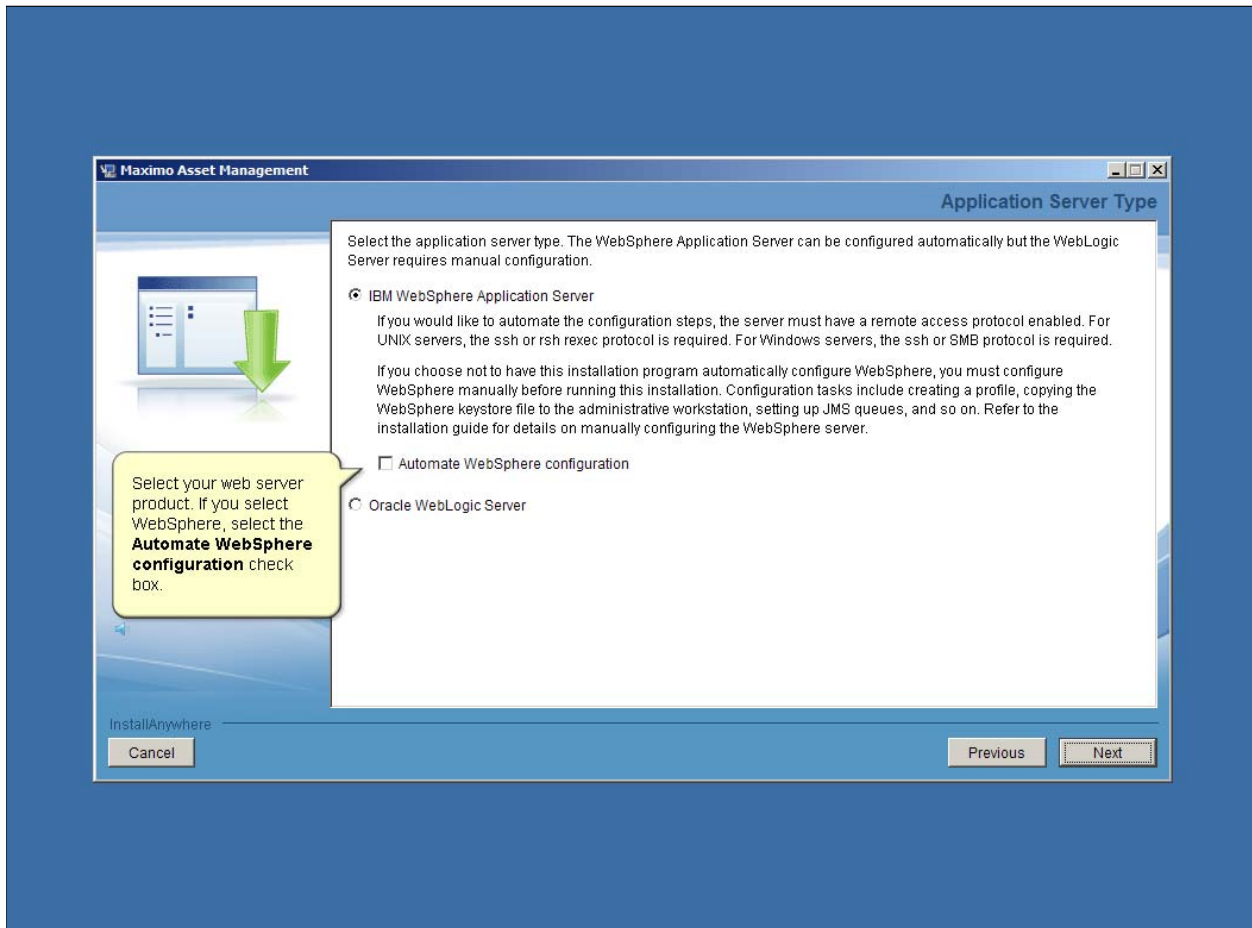
IBM Maximo Asset Management V7.5, Installing IBM Maximo Asset Management

Slide 19



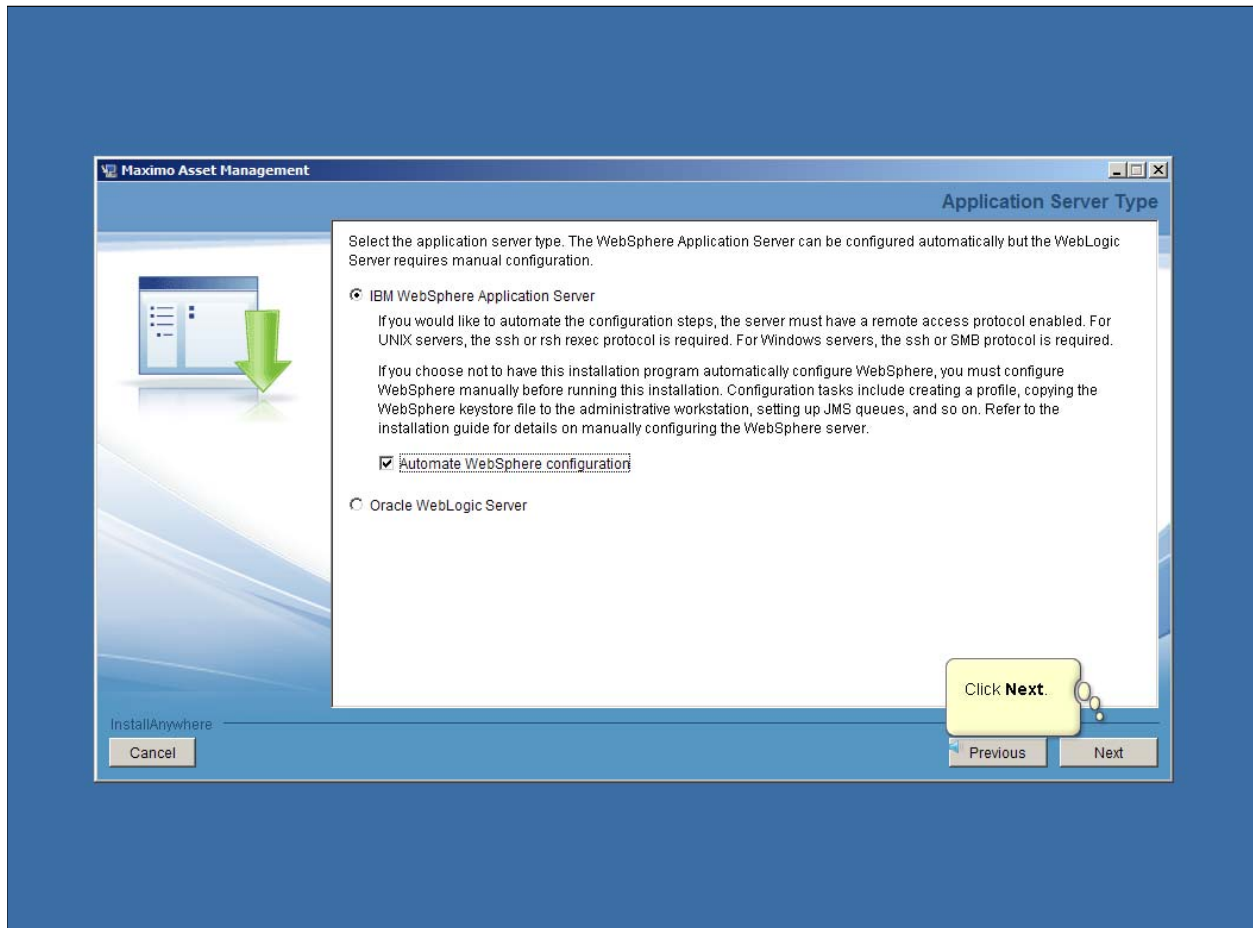
IBM Maximo Asset Management V7.5, Installing IBM Maximo Asset Management

Slide 20



IBM Maximo Asset Management V7.5, Installing IBM Maximo Asset Management

Slide 21



IBM Maximo Asset Management V7.5, Installing IBM Maximo Asset Management

Slide 22

To connect to or configure the WebSphere server, type either the host name or IP address in the **Host name** box. Type the password for user **wasadmin** and re-enter it to confirm the password. After completing these entries, click **Next**.

WebSphere Connectivity

Enter the information that is used to connect to the WebSphere server. Enter a fully qualified host name or IP address.

Host name

SOAP port 8879

User ID wasadmin

Password

Confirm password

Type either the host name or IP address.

Type the password for user **wasadmin** and re-enter it to confirm.

Click **Next**.

Cancel Previous Next

IBM Maximo Asset Management V7.5, Installing IBM Maximo Asset Management

Slide 23

Maximo Asset Management WebSphere Remote Access Authorization

You have selected to automate the WebSphere configuration.

Enter a user ID that can access the WebSphere Deployment Manager. This user ID must be able to access the server using the remote access protocol enabled on that server.

Operating system user ID

Operating system password

Confirm password

Enter the information for the WebSphere Application Server.

WebSphere installation directory

Profile name

Enter the server operating system user ID and password. Confirm the password. Enter the directory path for the application server. After completing these entries click **Next.**

**Type C:
\\IBM\WebSphere\AppServer.**

Click **Next.**

InstallAnywhere

IBM Maximo Asset Management V7.5, Installing IBM Maximo Asset Management

Slide 24

Maximo Asset Management

WebSphere Application Server Configuration

Enter the information for the WebSphere Application Server.

Web server port

Web server name

Node name

Application server

Verify the WebSphere information as shown here and make note of the **Web server port**. Click **Next** to continue.

InstallAnywhere

Cancel

Click **Next**.

Previous Next

IBM Maximo Asset Management V7.5, Installing IBM Maximo Asset Management

Slide 25

Maximo Asset Management Security

- Use application server and LDAP for authentication and user/group management**
With this option, you create all your users and security groups in your directory (LDAP) server. The information from the directory server is updated in your Maximo database by using a cron task. With this option, you can create additional security groups and assign group memberships in Maximo. All users must be added in the directory - adding users is not allowed in Maximo. Information entered in Maximo is never propagated to your directory. This option requires application security to already be enabled in WebSphere.
- Use application server and LDAP for authentication only**
With this option, you can create your users and groups in the directory (LDAP) server or in Maximo. The information from the directory server is updated in your Maximo database by using a cron task. With this option, you can create additional users, security groups and assign group memberships in Maximo. Information entered in Maximo is never propagated to your directory. This option requires application security to already be enabled in WebSphere.
- Use Maximo internal authentication**
With this option, a directory server is not required. You create and manage users and groups in the Users and Security Groups applications, separately from any corporate user data you might have.

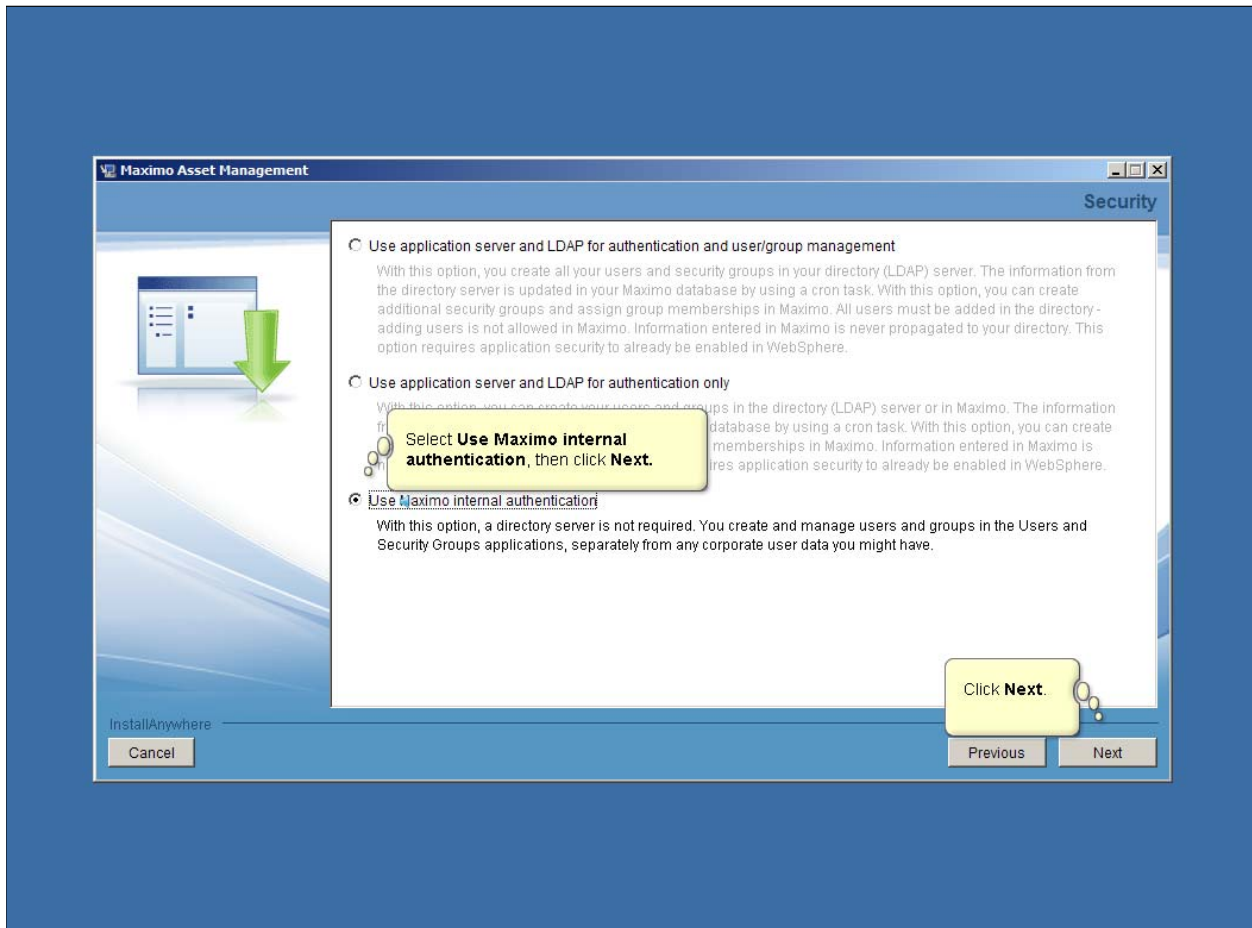
InstallAnywhere

Cancel Previous Next

Prepare to change the default security option shown here.

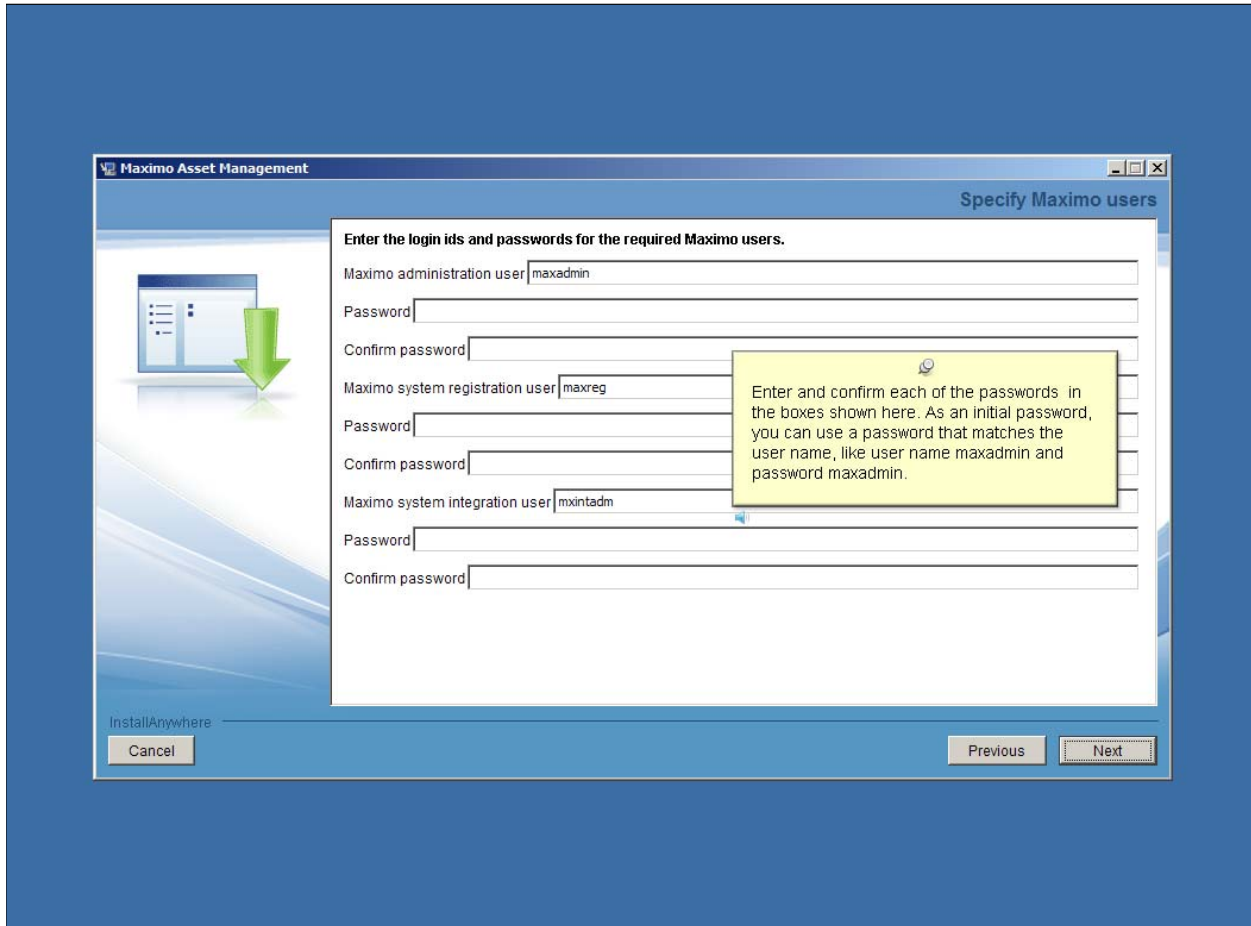
IBM Maximo Asset Management V7.5, Installing IBM Maximo Asset Management

Slide 26



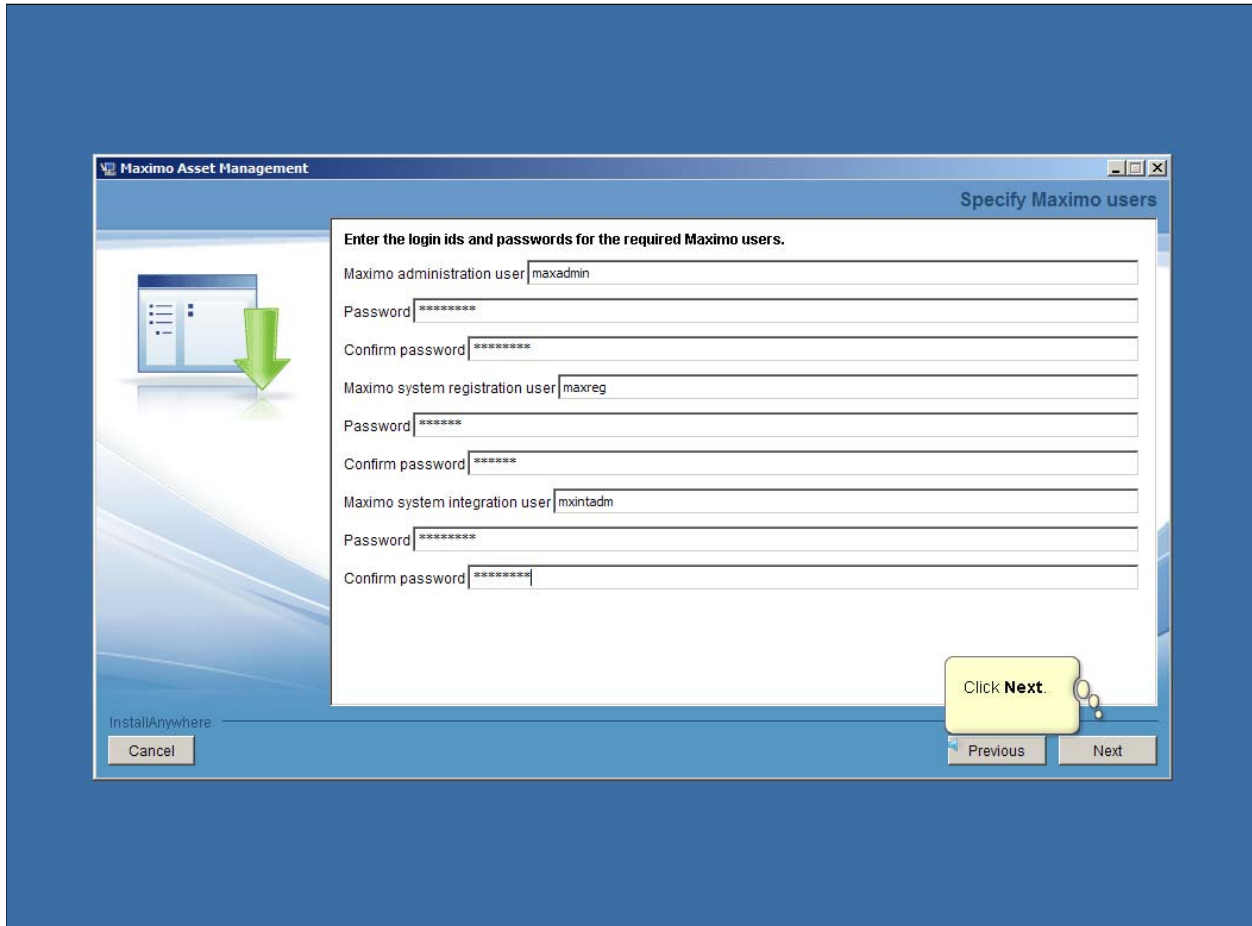
IBM Maximo Asset Management V7.5, Installing IBM Maximo Asset Management

Slide 27



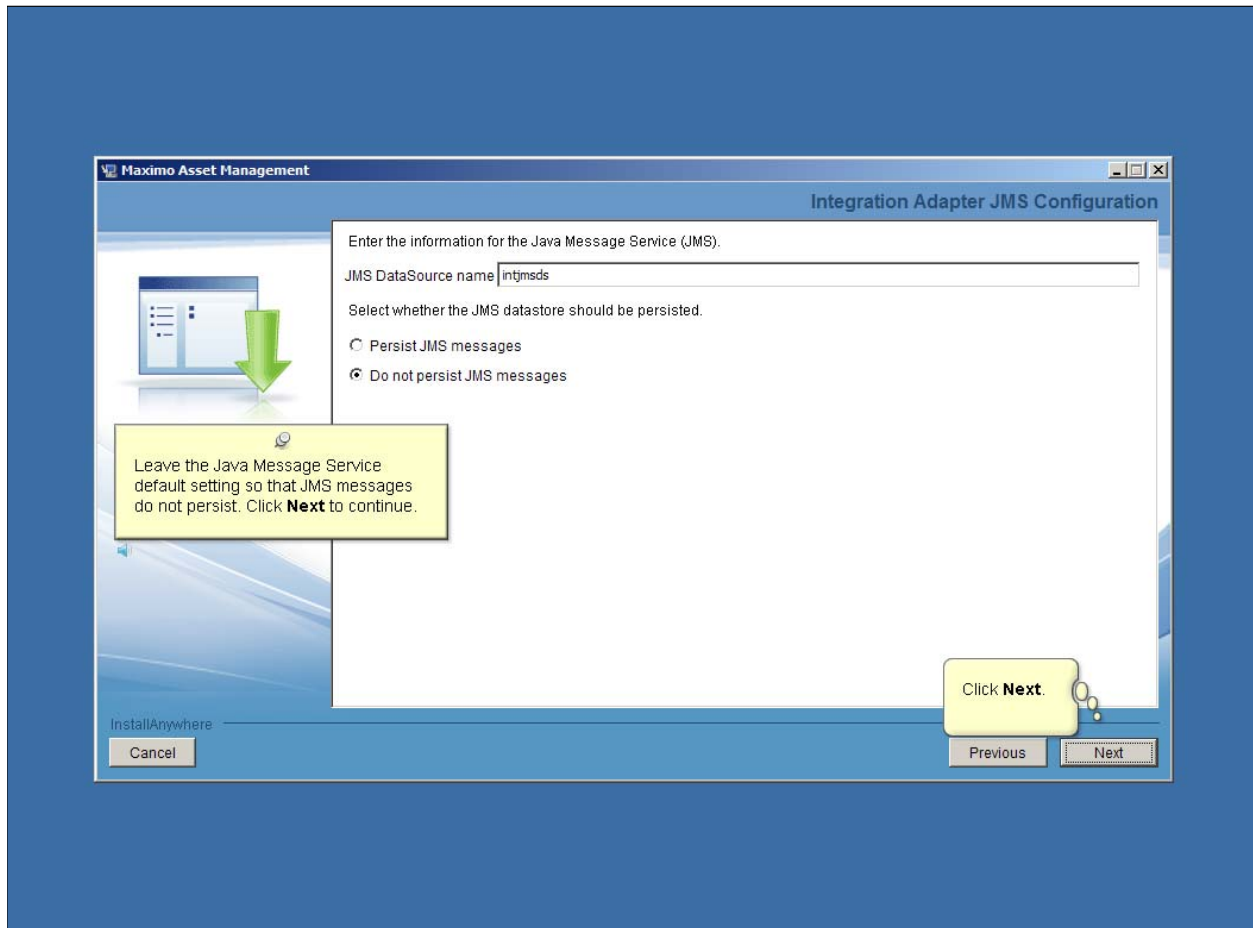
IBM Maximo Asset Management V7.5, Installing IBM Maximo Asset Management

Slide 28



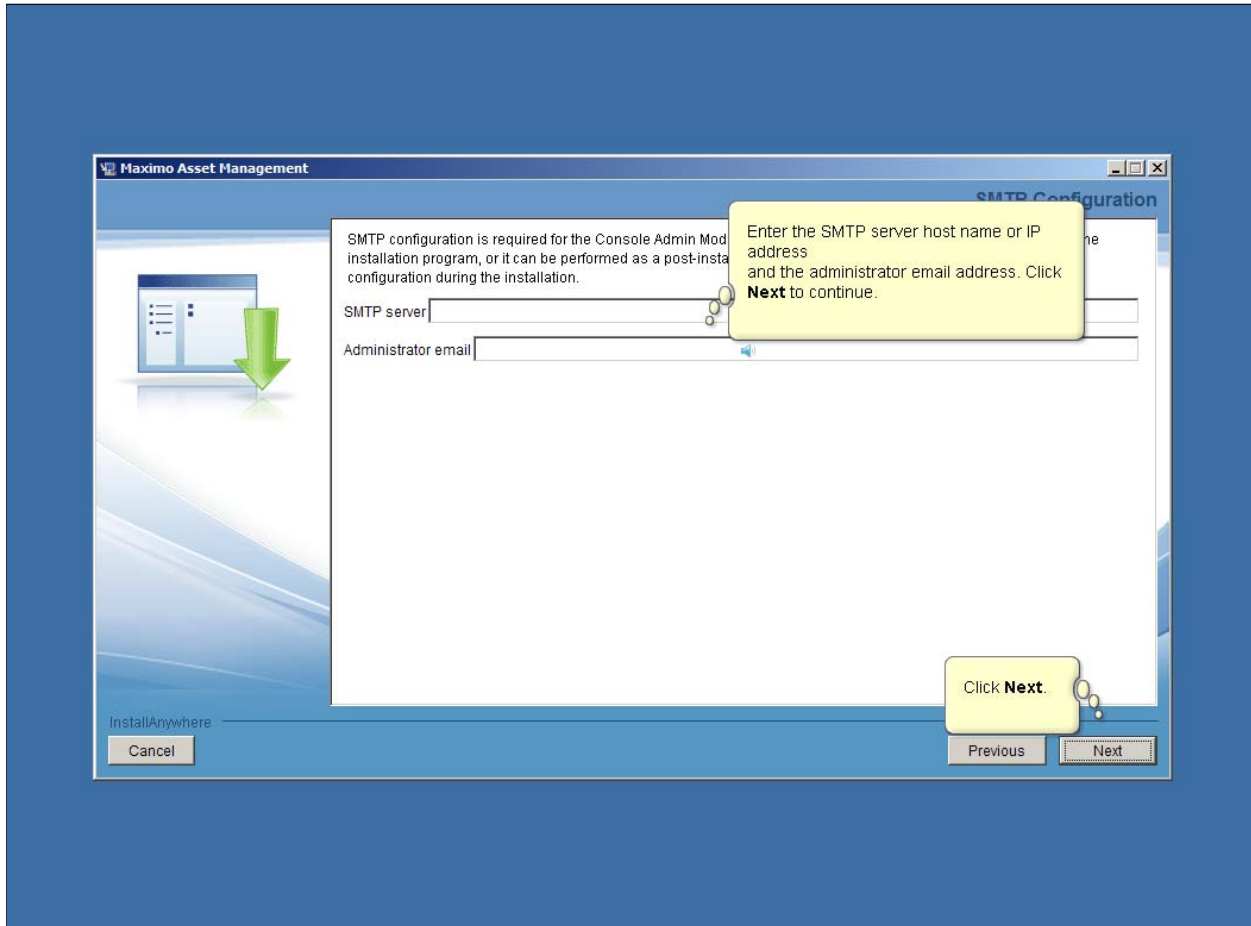
IBM Maximo Asset Management V7.5, Installing IBM Maximo Asset Management

Slide 29



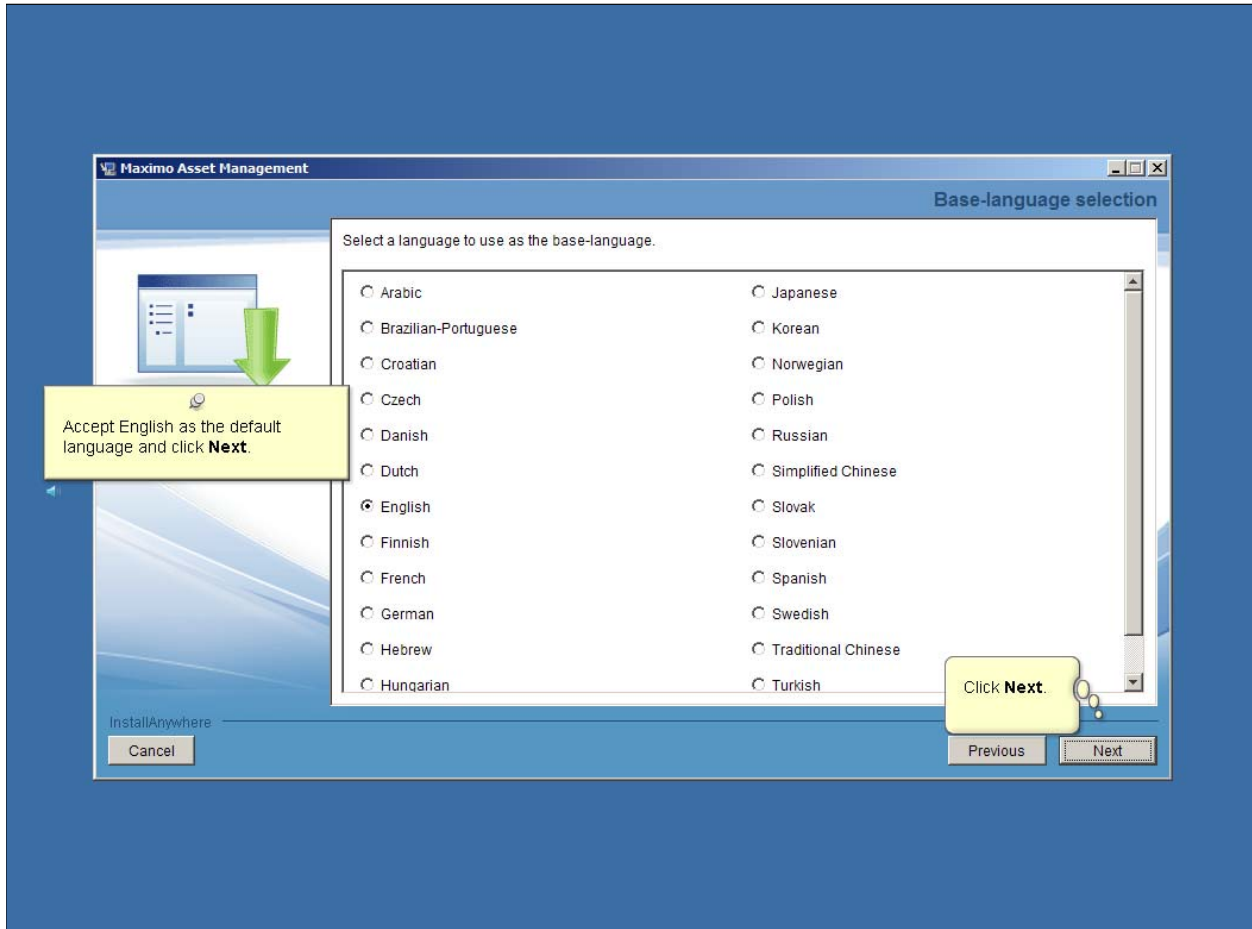
IBM Maximo Asset Management V7.5, Installing IBM Maximo Asset Management

Slide 30



IBM Maximo Asset Management V7.5, Installing IBM Maximo Asset Management

Slide 31



IBM Maximo Asset Management V7.5, Installing IBM Maximo Asset Management

Slide 32

Select any additional languages and click **Next**.

Maximo Asset Management

Additional language selection

Select the languages that you would like to add.

- Arabic
- Brazilian-Portuguese
- Croatian
- Czech
- Danish
- Dutch
- Finnish
- French
- German
- Hebrew
- Hungarian
- Italian
- Japanese
- Korean
- Norwegian
- Polish
- Russian
- Simplified Chinese
- Slovak
- Slovenian
- Spanish
- Swedish
- Traditional Chinese
- Turkish

InstallAnywhere

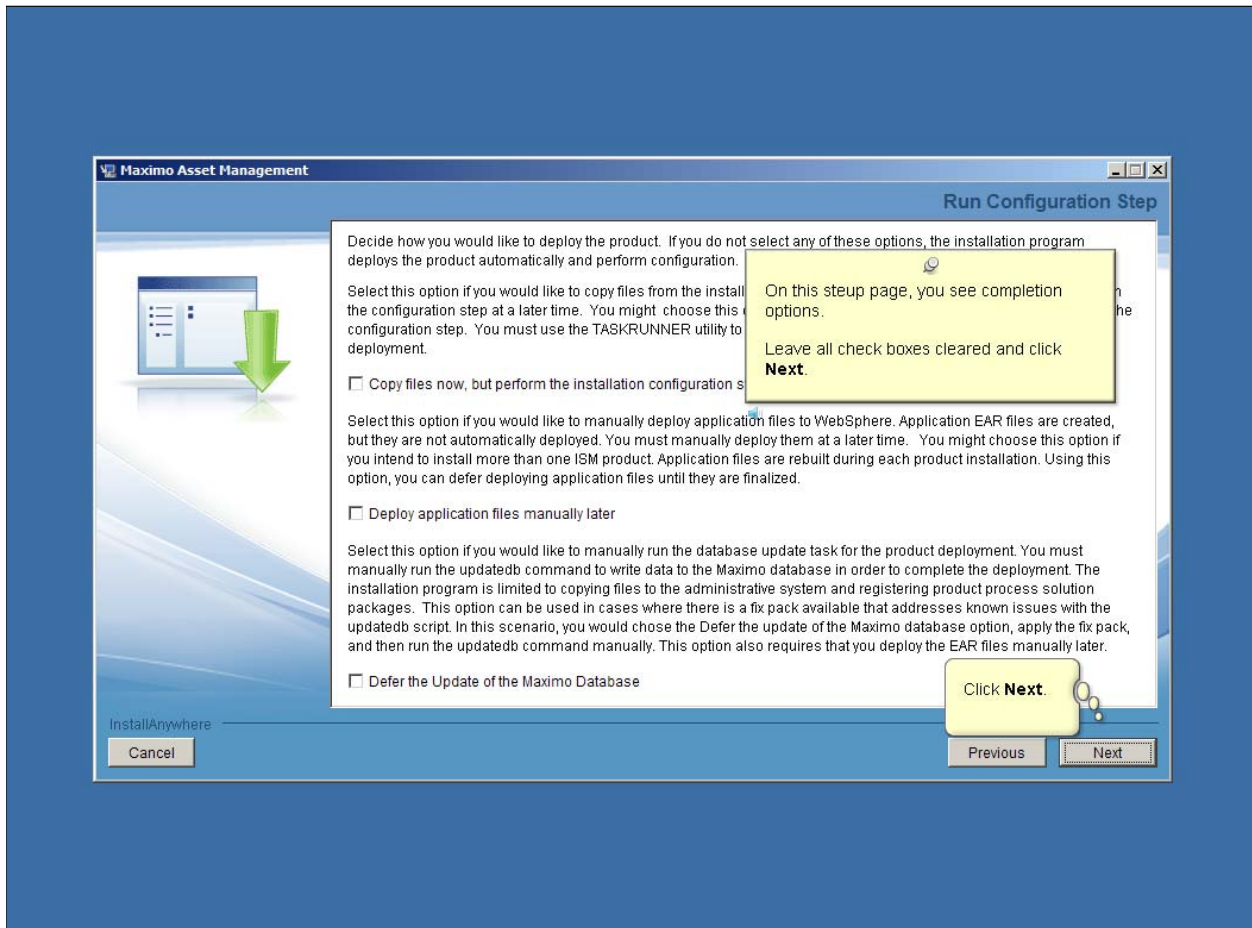
Cancel

Previous Next

Click **Next**.

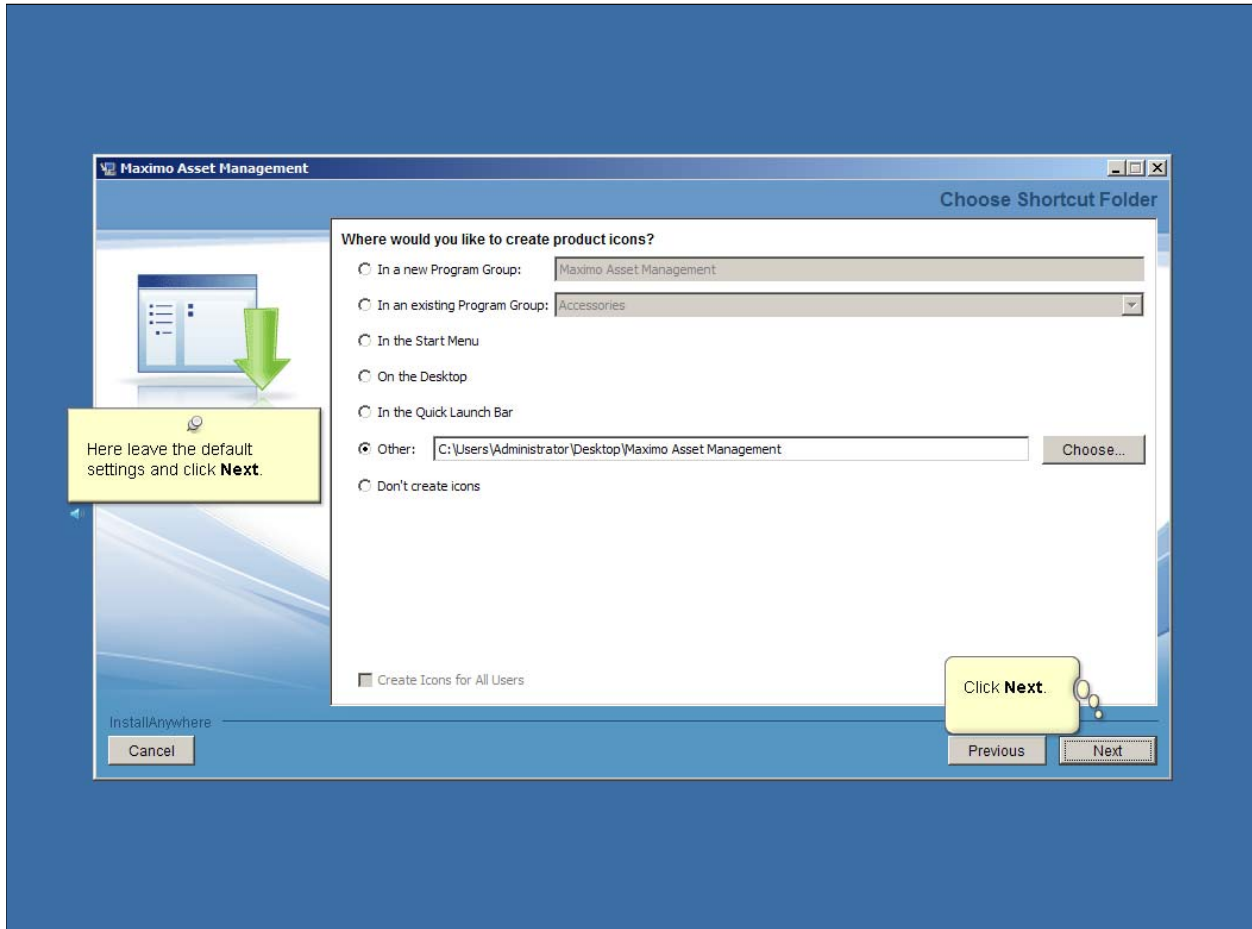
IBM Maximo Asset Management V7.5, Installing IBM Maximo Asset Management

Slide 33



IBM Maximo Asset Management V7.5, Installing IBM Maximo Asset Management

Slide 34



IBM Maximo Asset Management V7.5, Installing IBM Maximo Asset Management

Slide 35

Review your selections and click **Next**.

Review the following input values. Click Previous to change values if necessary.

- Security Server Configuration
 - Configure J2EE application security: no
 - Use Maximo internal authentication: yes
 - Create the required users: no
- Maximo user information:
 - Maximo administration user: maxadmin
 - Maximo system registration user: maxreg
 - Maximo system integration user: mxintadm
- SMTP Configuration
 - SMTP server: 9.32.230.183
 - Administrator email: ewinches@us.ibm.com
- Language Choices
 - Base-language selected: English
- Configuration Step
 - Copy files now, but perform the installation configuration step later: no
 - Deploy application files manually later: no
 - Defer the Update of the Maximo Database: no

InstallAnywhere

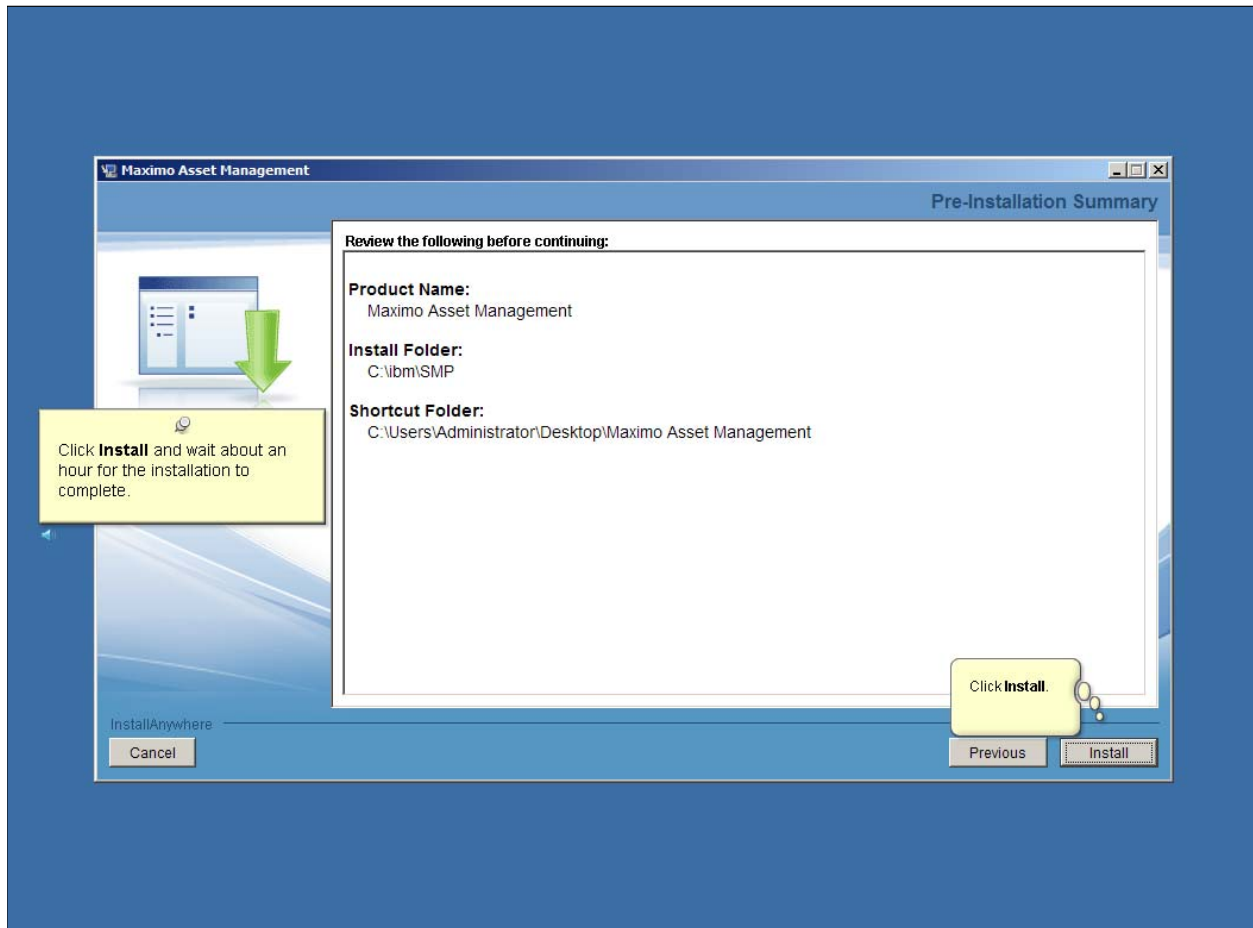
Cancel

Click **Next**.

Previous Next

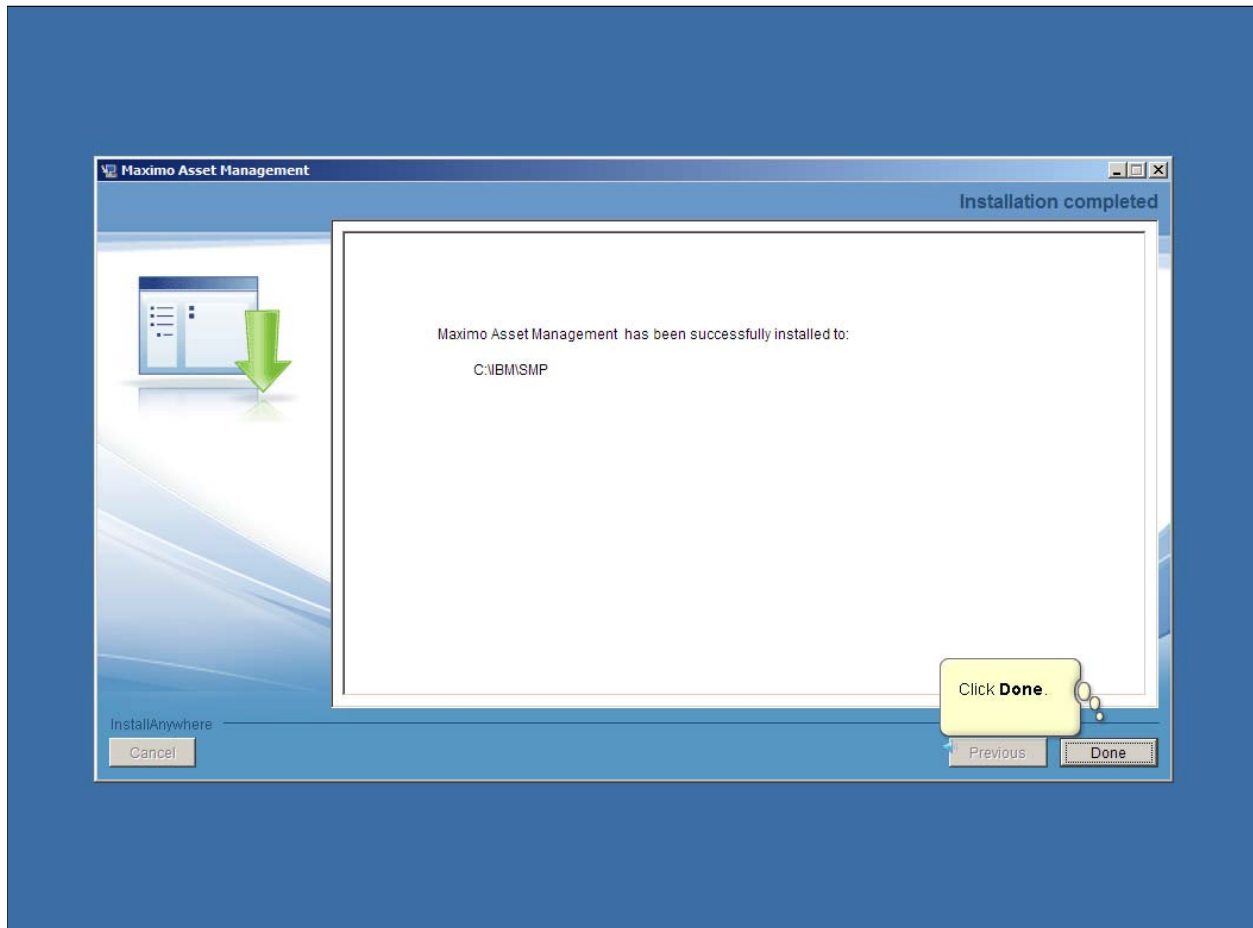
IBM Maximo Asset Management V7.5, Installing IBM Maximo Asset Management

Slide 36



IBM Maximo Asset Management V7.5, Installing IBM Maximo Asset Management

Slide 37



IBM Maximo Asset Management V7.5, Installing IBM Maximo Asset Management

Slide 38

Maximo Asset Management Select a language: English OK

Welcome
Installation Planning
▶ **Install Product**
Information Center
Exit

IBM Maximo Asset Management 7.5 Installation

1. **Install the middleware (Optional)**
Click on this link to verify that you meet the requirements to install the Middleware.
[Verify installation requirements](#)

Select the Optional Middleware Link first only if you want to have the DB2 Database, the IBM WebSphere Application Server or the Tivoli Directory Server installed and Configured. All other databases and Web Applications servers (e.g. BEA Weblogic, Oracle, SQL Server) must be installed manually prior to the installation of IBM Maximo Asset Management.

[Middleware](#)

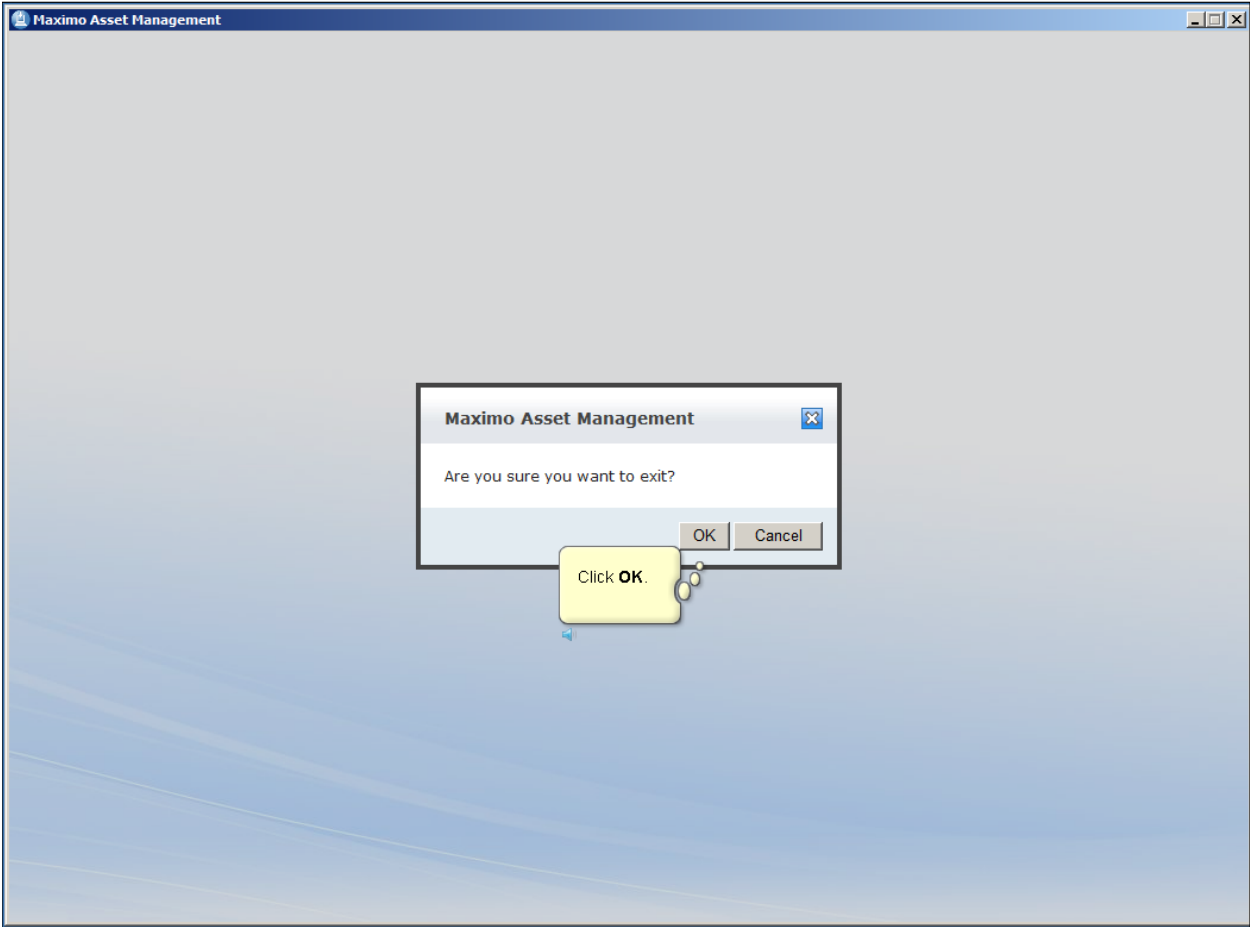
2. **Install IBM Maximo Asset Management 7.5 (Required)**
Select **Maximo Asset Management** below to launch the installation.
[Maximo Asset Management](#)

Click **Exit**.

IBM.

IBM Maximo Asset Management V7.5, Installing IBM Maximo Asset Management

Slide 39



IBM Maximo Asset Management V7.5, Installing IBM Maximo Asset Management

Slide 40



Summary

Now that you completed this unit, you can perform these tasks:

- Use the IBM Maximo Asset Management launchpad to install IBM Maximo Asset Management version 7.5 on a Microsoft Windows administrative workstation

- Configure security settings to utilize internal Maximo Asset Management authentication of users

- Create and configure a database for use with IBM Maximo Asset Management

Trademarks, copyrights, and disclaimers

IBM, the IBM logo, ibm.com, and Tivoli are trademarks or registered trademarks of International Business Machines Corp., registered in many jurisdictions worldwide. Other product and service names might be trademarks of IBM or other companies. A current list of other IBM trademarks is available on the web at "[Copyright and trademark information](http://www.ibm.com/legal/copytrade.shtml)" at <http://www.ibm.com/legal/copytrade.shtml>

THE INFORMATION CONTAINED IN THIS PRESENTATION IS PROVIDED FOR INFORMATIONAL PURPOSES ONLY. WHILE EFFORTS WERE MADE TO VERIFY THE COMPLETENESS AND ACCURACY OF THE INFORMATION CONTAINED IN THIS PRESENTATION, IT IS PROVIDED "AS IS" WITHOUT WARRANTY OF ANY KIND, EXPRESS OR IMPLIED. IN ADDITION, THIS INFORMATION IS BASED ON IBM'S CURRENT PRODUCT PLANS AND STRATEGY, WHICH ARE SUBJECT TO CHANGE BY IBM WITHOUT NOTICE. IBM SHALL NOT BE RESPONSIBLE FOR ANY DAMAGES ARISING OUT OF THE USE OF, OR OTHERWISE RELATED TO, THIS PRESENTATION OR ANY OTHER DOCUMENTATION. NOTHING CONTAINED IN THIS PRESENTATION IS INTENDED TO, NOR SHALL HAVE THE EFFECT OF, CREATING ANY WARRANTIES OR REPRESENTATIONS FROM IBM (OR ITS SUPPLIERS OR LICENSORS), OR ALTERING THE TERMS AND CONDITIONS OF ANY AGREEMENT OR LICENSE GOVERNING THE USE OF IBM PRODUCTS OR SOFTWARE.

© Copyright International Business Machines Corporation 2012. All rights reserved.