

Configuring the root password

Slide 1

Tivoli

IBM

IBM Security Network Active Bypass

Configuring the root password



This is a self-running demonstration that shows you how to complete a task.
Controls are available at the bottom of the screen.

© Copyright IBM Corporation 2011 All rights reserved.

Configuring the root password

Slide 2



Objectives

When you complete this module, you will be able to:

- Use SSH to connect to the Network Active Bypass unit
- Configure the root password on the Network Active Bypass unit

© 2011 IBM Corporation

Slide 3



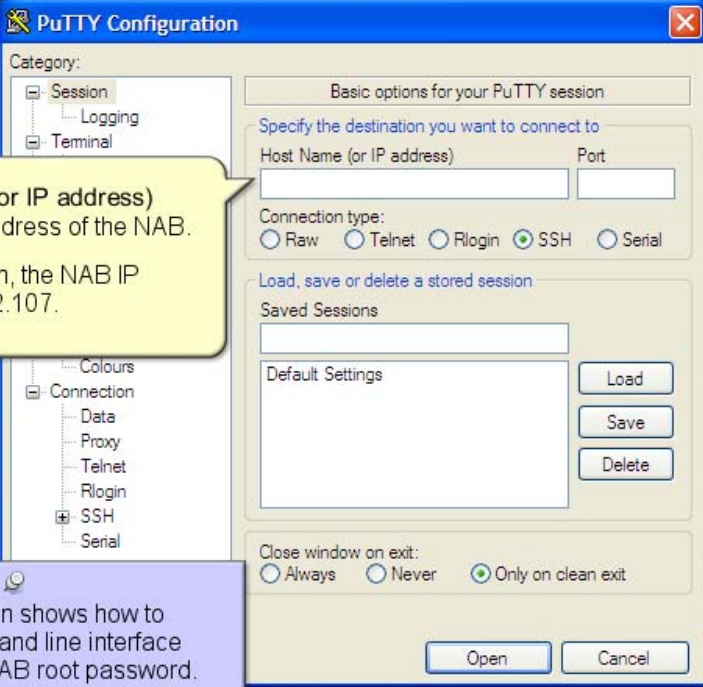
Connecting to the Network Active Bypass unit

- You can access the command line interface for the Network Active Bypass (NAB) unit in one of two ways:
 - Through a serial terminal emulator using the Console port
 - Through an SSH remote shell emulator using the management port (22)
- After you connect, you use the administrator account to configure the NAB unit

Note: It is important to change the default root password for the NAB unit. You can change the root password only by using command line parameters

Configuring the root password

Slide 4



The image shows the PuTTY Configuration dialog box. The 'Category' list on the left includes Session, Logging, Terminal, Colours, Connection, Data, Proxy, Telnet, Rlogin, SSH (selected), and Serial. The 'Basic options for your PuTTY session' section contains the following fields and options:

- Specify the destination you want to connect to:**
 - Host Name (or IP address): [Empty text box]
 - Port: [Empty text box]
- Connection type:**
 - Raw
 - Telnet
 - Rlogin
 - SSH
 - Serial
- Load, save or delete a stored session:**
 - Saved Sessions: [Empty list box]
 - Default Settings: [Empty text box]
 - Buttons: Load, Save, Delete
- Close window on exit:**
 - Always
 - Never
 - Only on clean exit

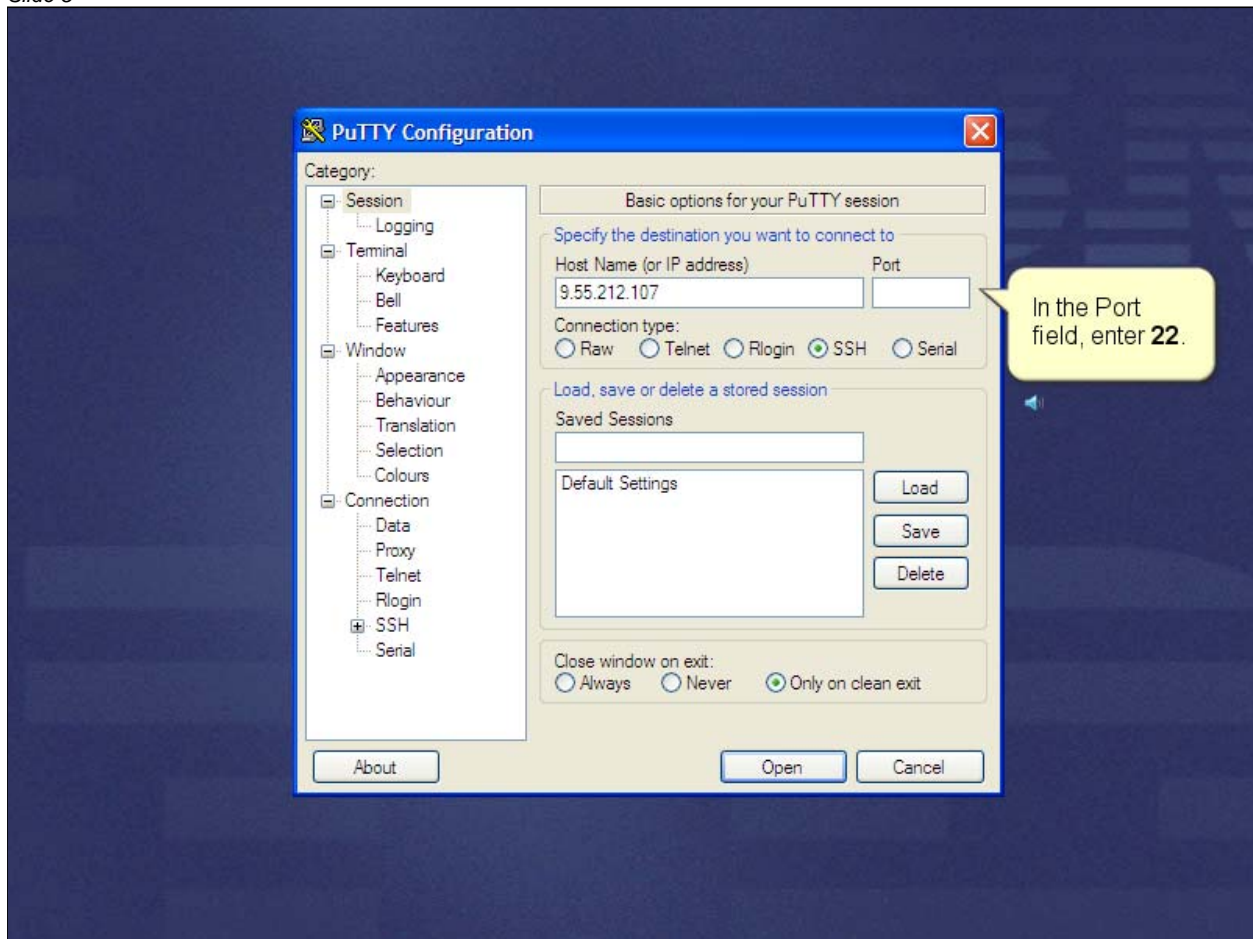
Buttons at the bottom: Open, Cancel.

Callout 1 (Yellow): In the Host Name (or IP address) field, enter the IP address of the NAB. In this demonstration, the NAB IP address is 9.55.212.107.

Callout 2 (Purple): This demonstration shows how to access the command line interface and change the NAB root password. This demonstration uses PuTTY to access the unit.

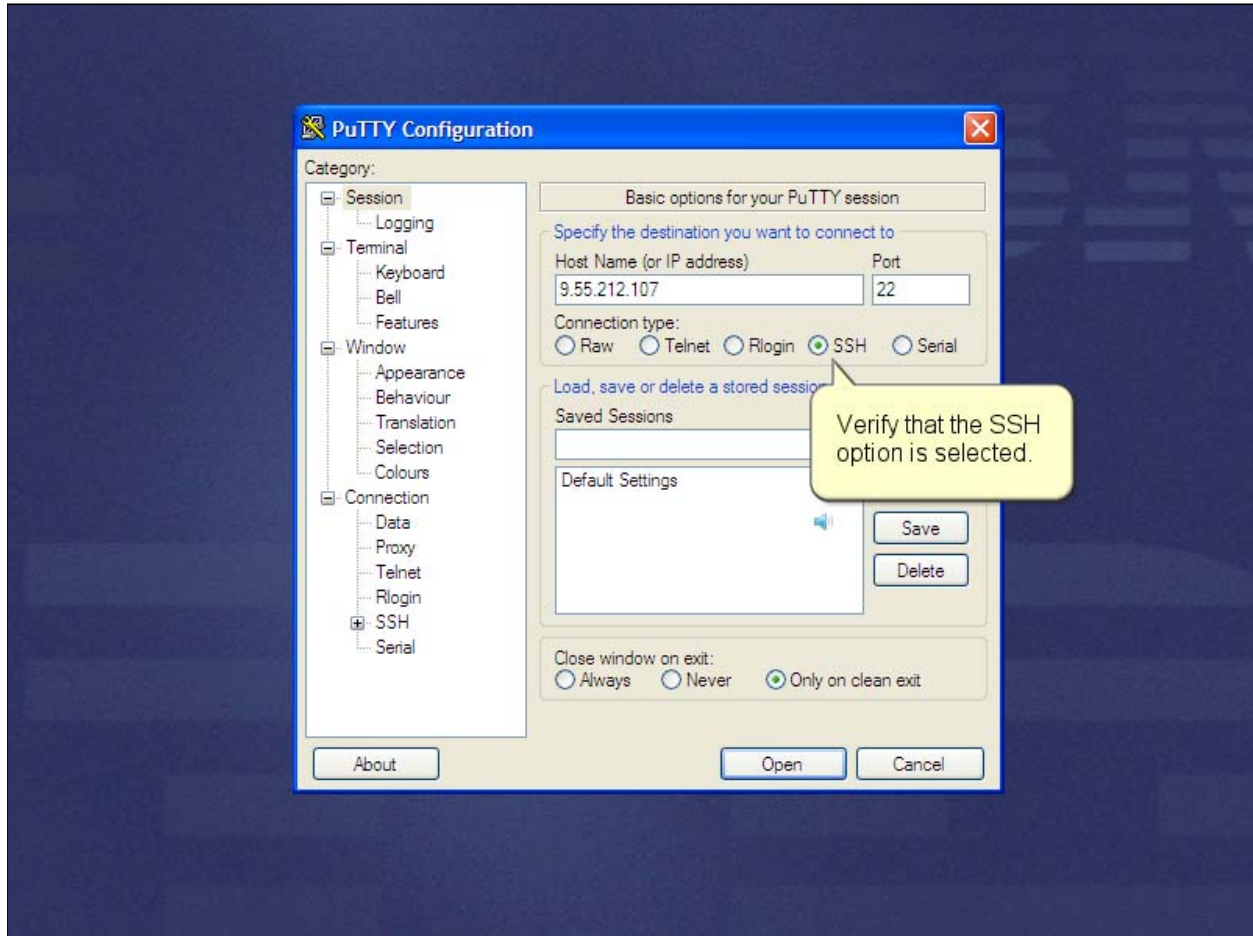
Configuring the root password

Slide 5



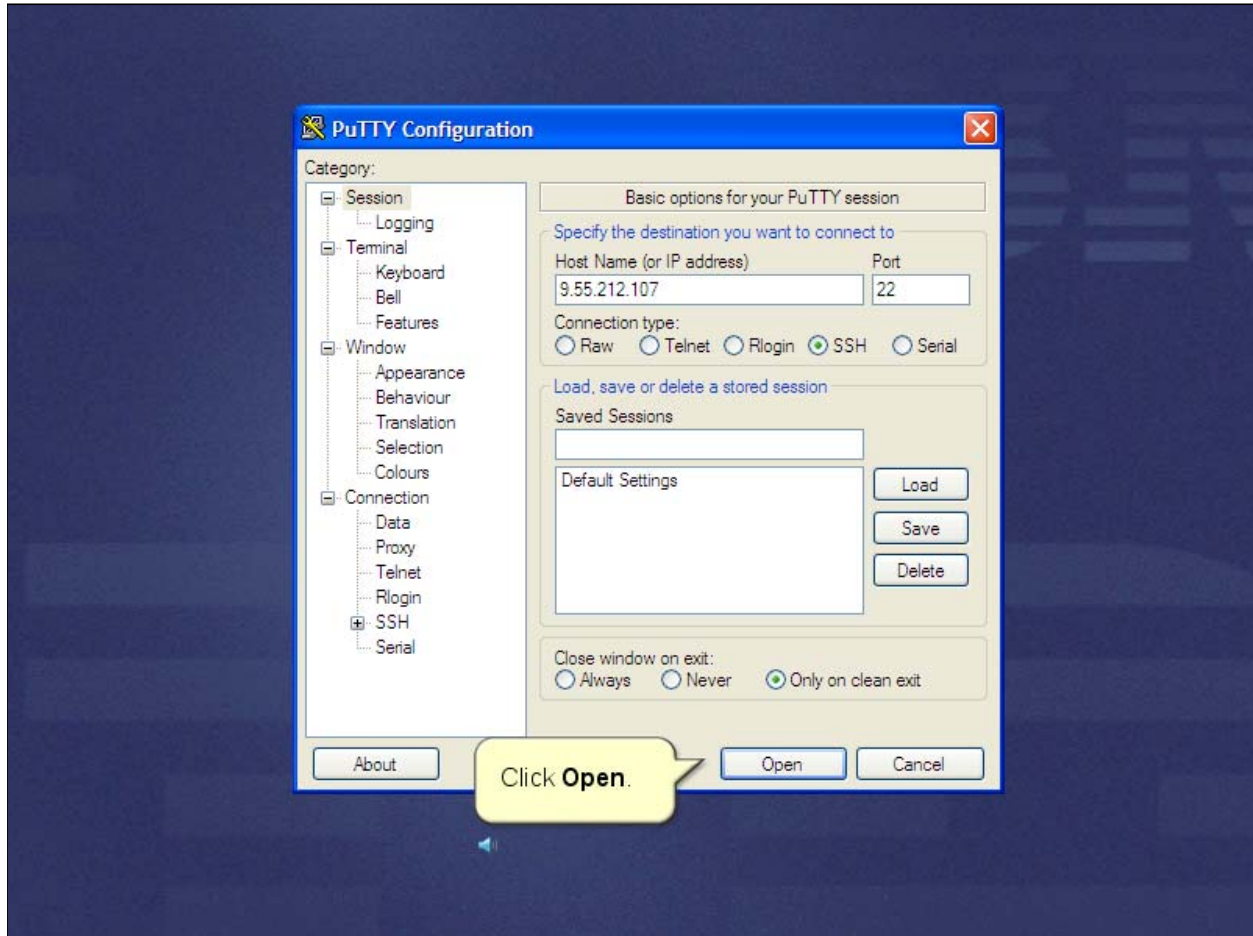
Configuring the root password

Slide 6



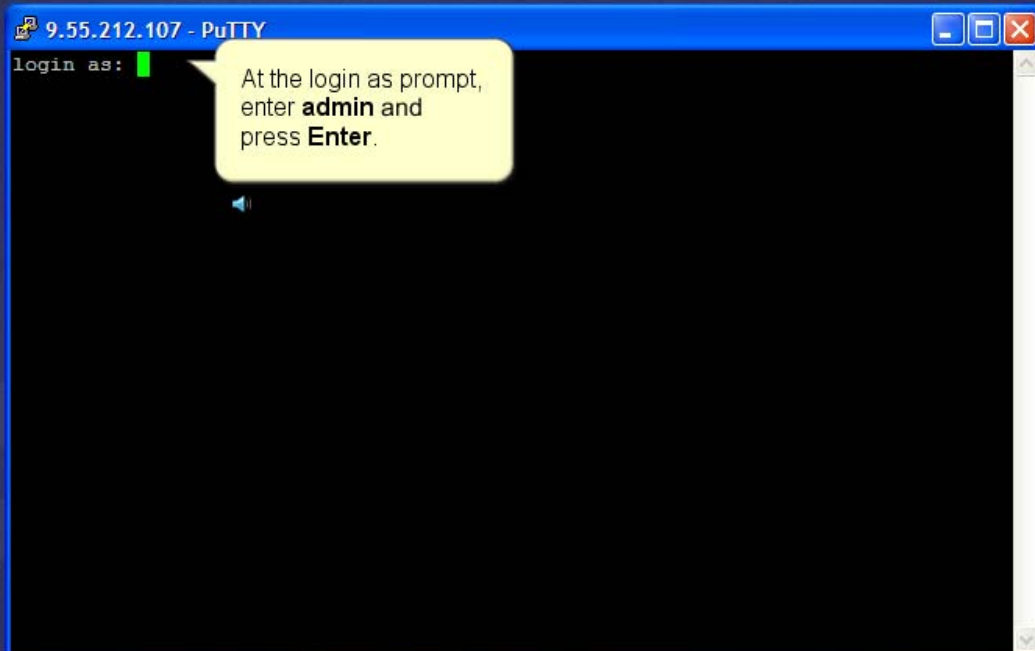
Configuring the root password

Slide 7



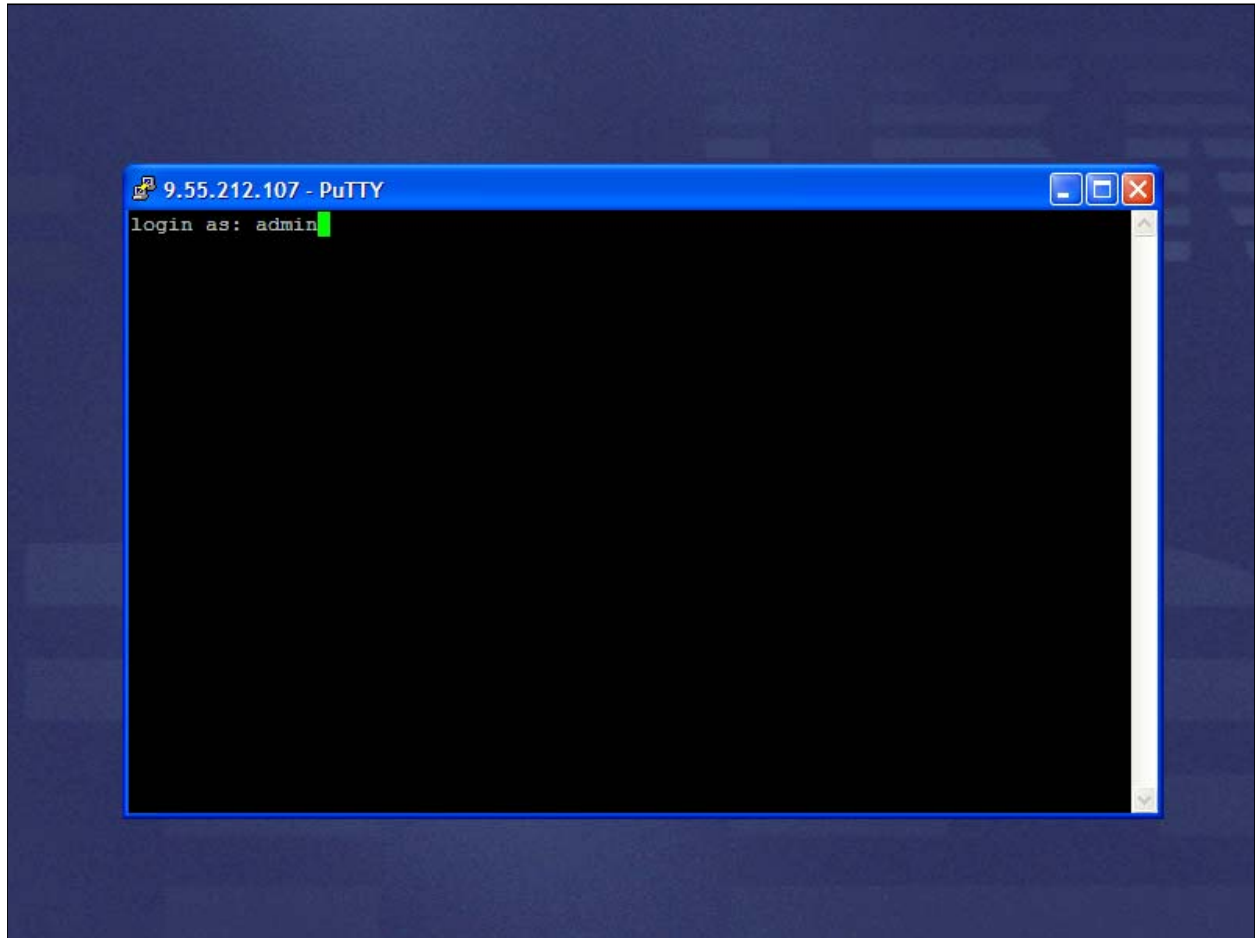
Configuring the root password

Slide 8



Configuring the root password

Slide 9



Configuring the root password

Slide 10



Configuring the root password

Slide 11



```
9.55.212.107 - PuTTY
login as: admin
admin@9.55.212.107's password:

BusyBox v1.2.1 (2009.10.06-16:26+0000) Built-in shell (ash)
Enter 'help' for a list of built-in commands.

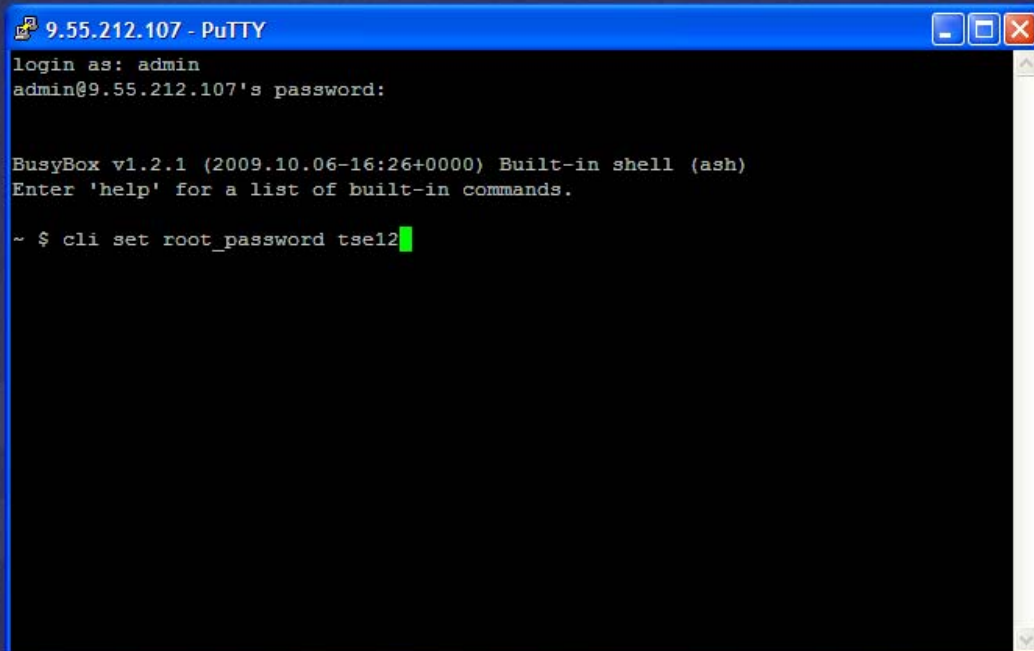
~ $ █
```

At the prompt, enter **cli set root_password <new password>** and press **Enter**.

In this demonstration the new password is tse123.

Configuring the root password

Slide 12



```
9.55.212.107 - PuTTY
login as: admin
admin@9.55.212.107's password:

BusyBox v1.2.1 (2009.10.06-16:26+0000) Built-in shell (ash)
Enter 'help' for a list of built-in commands.

~ $ cli set root_password tse12
```

Configuring the root password

Slide 13



```
9.55.212.107 - PuTTY
login as: admin
admin@9.55.212.107's password:

BusyBox v1.2.1 (2009.10.06-16:26+0000) Built-in shell (ash)
Enter 'help' for a list of built-in commands.

~ $ cli set root_password tse12
      root_password  tse12
~ $
```

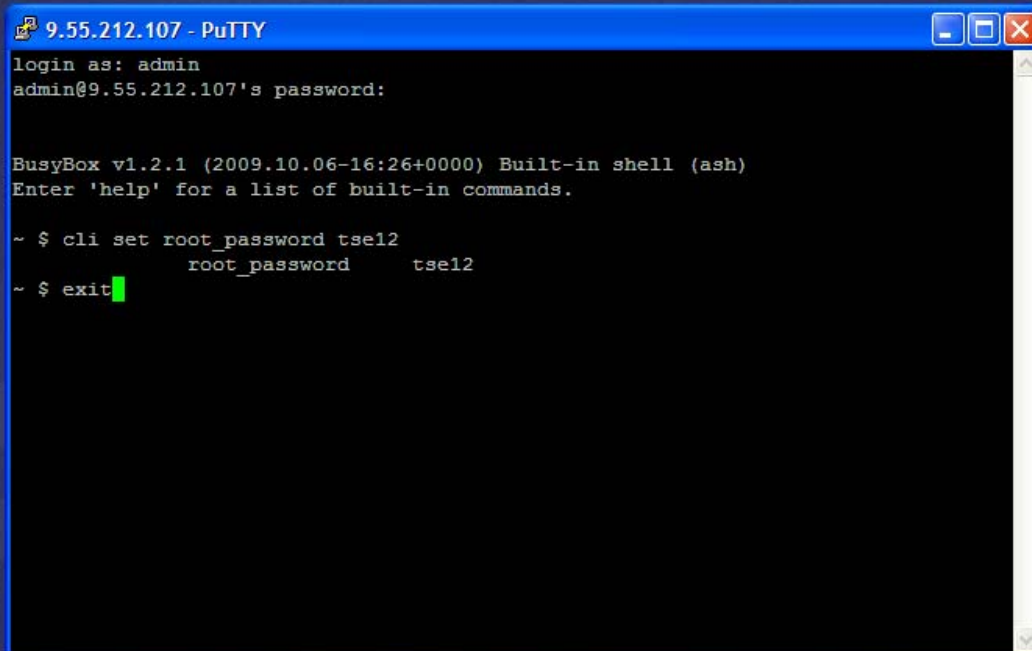
The root password changes.

To close the command line interface, at the prompt, enter **exit** and press **Enter**.

You do not have to reenter or verify the password.

Configuring the root password

Slide 14



```
9.55.212.107 - PuTTY
login as: admin
admin@9.55.212.107's password:

BusyBox v1.2.1 (2009.10.06-16:26+0000) Built-in shell (ash)
Enter 'help' for a list of built-in commands.

~ $ cli set root_password tse12
      root_password      tse12
~ $ exit
```

Slide 15



Further reference

For a list of command line parameters that you can use to configure the Network Active Bypass unit, see Chapter 4 in the [IBM Security Network Active Bypass User Guide](#)

Slide 16

Trademarks, copyrights, and disclaimers

IBM, the IBM logo, ibm.com, and Tivoli are trademarks or registered trademarks of International Business Machines Corp., registered in many jurisdictions worldwide. Other product and service names might be trademarks of IBM or other companies. A current list of other IBM trademarks is available on the web at "[Copyright and trademark information](http://www.ibm.com/legal/copytrade.shtml)" at <http://www.ibm.com/legal/copytrade.shtml>

THE INFORMATION CONTAINED IN THIS PRESENTATION IS PROVIDED FOR INFORMATIONAL PURPOSES ONLY. WHILE EFFORTS WERE MADE TO VERIFY THE COMPLETENESS AND ACCURACY OF THE INFORMATION CONTAINED IN THIS PRESENTATION, IT IS PROVIDED "AS IS" WITHOUT WARRANTY OF ANY KIND, EXPRESS OR IMPLIED. IN ADDITION, THIS INFORMATION IS BASED ON IBM'S CURRENT PRODUCT PLANS AND STRATEGY, WHICH ARE SUBJECT TO CHANGE BY IBM WITHOUT NOTICE. IBM SHALL NOT BE RESPONSIBLE FOR ANY DAMAGES ARISING OUT OF THE USE OF, OR OTHERWISE RELATED TO, THIS PRESENTATION OR ANY OTHER DOCUMENTATION. NOTHING CONTAINED IN THIS PRESENTATION IS INTENDED TO, NOR SHALL HAVE THE EFFECT OF, CREATING ANY WARRANTIES OR REPRESENTATIONS FROM IBM (OR ITS SUPPLIERS OR LICENSORS), OR ALTERING THE TERMS AND CONDITIONS OF ANY AGREEMENT OR LICENSE GOVERNING THE USE OF IBM PRODUCTS OR SOFTWARE.

© Copyright International Business Machines Corporation 2011. All rights reserved.