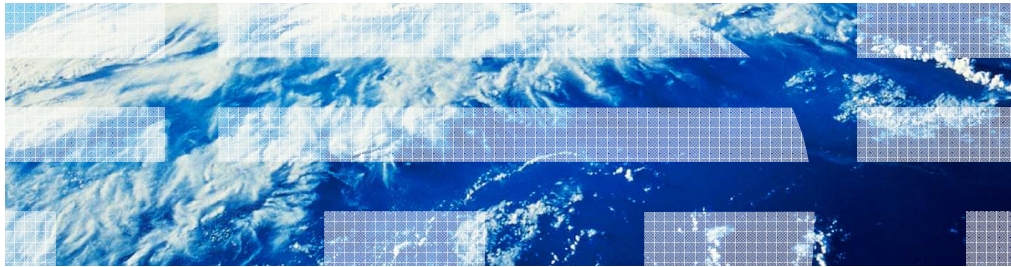


# IBM Operational Decision Manager V8.0.1

## Installation overview



© 2012 IBM Corporation

This presentation provides an overview of the various types of installations for IBM Operational Decision Manager V8.0.1 on distributed platforms.

## Table of contents

- Installable components
- Types of installation
- Known issues and workarounds

Shown here is the agenda for the presentation. This presentation provides details on the various installation components, types of installation and some of the known issues.

## Operational Decision Management V8.0.1 - Installation (1 of 2)

- Can be installed on distributed and z/OS® environments
- Tools provided for installation on distributed platform
  - Launchpad
  - Installation Manager
- Components available for installation
  - Decision Center
    - Decision Center Enterprise Console and Business Console
    - Rule Solutions for Office
  - Decision Server
    - Rule Designer and Event Designer
    - Rule Execution Server
    - Event runtime
  - Business rules Embedded

IBM Operational Decision Manager is supported on distributed platforms, and on z/OS. To install Operational Decision Manager on distributed platforms, you use either the launchpad or Installation Manager. The launchpad uses Installation Manager to install the prerequisite software and the Operational Decision Manager packages. You can also invoke the Installation Manager and install IBM Operational Decision Manager. The various components available for installation are shown here. The components include Decision Center, Decision Server and Business rules embedded.

## Operational Decision Management V8.0.1 - Installation (2 of 2)

- Installable components continued
  - Installation Manager V1.6
  - WebSphere® Application Server Network Deployment V8.0.0.5
  - WebSphere eXtreme Scale V7.1.1.1
  - Business Space removed as requirement
  - Event tools removed from installation

Other installable components include the IBM installation manager V1.6, WebSphere Application Server Network Deployment V8.0.0.5 and WebSphere eXtreme Scale V7.1.1.1.

Business space is no longer a prerequisite for IBM Operational Decision Manager. Event tools is removed as a installable component in IBM Operational Decision Manager V8.0.1.

## Types of installation

- Typical installation
  - Uses the Launchpad application
  - Installs all the IBM Operational Decision Manager components on WebSphere Application Server
  - provides option to install
    - Sample server
    - Stand-alone server
- Customized installation using Installation Manager
- Silent installation using Installation Manager

The various ways to install IBM Operational Decision Manager are shown here. Typical installation uses IBM installation manager and installs all of the IBM Operational Decision Manager components on WebSphere application server. Typical installation simplifies the process of installation by minimizing the amount of input you have to provide. All the input is provided by way of the launchpad tool. Launchpad invokes the various installers required by using the silent installation process. Typical installation supports two different installation types – sample server and stand-alone server. You can also customize your installation by making use of the custom installation path. With custom installation, you will interact with the IBM Installation Manager panels and have more control over the installation of various components and their features. You can also install the product silently without any interaction with IBM installation manager user interface by passing a response file.

## Types of installation – Sample server

- Typical installation
  - Sample server
    - Can be used for development and testing.
    - Creates a WebSphere Application Server profile
      - deploys the Operational Decision Manager components to a profile
    - Applications required for samples and tutorials configured
    - Uses embedded Apache Derby database
    - WebSphere Application Server default messaging used as the messaging provider
    - WebSphere Application Server profile created on first start of the server

Sample Server is the default option for developing, testing, and running samples and tutorials. This option is not intended for production use.

Sample Server is a WebSphere Application Server V8.0.0.5 profile that contains the IBM Operational Decision Manager components and applications to run the samples, tutorials, and the Getting Started tutorials. You can use the Sample Server to test the different features of IBM Operational Decision Manager. Sample server makes use of embedded Apache Derby database and WebSphere Application Server default messaging as the messaging provider. The Sample Server does not require any configuration. The profile is created the first time that you start the Sample Server after installing the product.

## Types of installation – Stand-alone server (1 of 3)

- Typical installation
  - Stand-alone server
    - Can be used for development and for small scale production environment
    - Creates a WebSphere Application Server profile Server
      - Operational Decision Manager components deployed to the profile
      - No samples configured
    - Option to choose what components to install
      - Decision center
      - Decision Server rules, Decision Server events
    - Option to choose recommended ports or default ports for the application server profile

You can use the Stand-alone Server option for development or small-scale production environment. Stand-alone server configuration as sample server is a WebSphere Application Server profile on which all the IBM Operational Decision Manager components are installed. Sample and tutorial applications are not installed with stand-alone server.

When installing through the launchpad, this option requires little or no post-installation configuration. The server profile is created based on a set of parameters that you enter at installation time. When the installation is complete, the profile is already created and configured based on the information that you entered. You have the option to choose what components are installed. The available options are Decision Center, Decision Server rules and Decision server events. You also have the option to choose the ports used for the profile. By default, the recommended ports option is selected. This option automatically updates the WebSphere Application Server profile ports in case there are any existing profiles. You can also choose to use the default ports.

## Types of installation – Stand-alone server (2 of 3)

- Typical installation - Stand-alone server
  - Uses an existing database you provide
    - Supported database servers are



- Make sure the database is already created and test connection

**Install IBM Operational Decision Manager**

5. Select the type of database manager and enter the connection details:

Type:

Host name:

Port:

User name:

Password:

Database name:

The database must already exist to complete the installation.

As part of the installation of stand-alone server, you can choose which database server to use. The supported database servers are shown here. The database name that you provide in the launchpad should already exist on the database server. The database is not created by launchpad.



## Types of installation – Stand-alone server (3 of 3)

- Typical installation - Stand-alone server
  - Option to choose messaging provider
    - Embedded WebSphere Application Server default messaging or
    - Provide details for the WebSphere MQ server

**Install IBM Operational Decision Manager**

6. Select the type of messaging to use for internal communications in Decision Server Events:

Websphere Application Server default messaging

Websphere MQ

Transport type:

Websphere MQ installation location:

Queue manager name:

Host name:

Port:

Channel name:

You must manually create the Websphere MQ resources listed above.

You can choose the option to use WebSphere Application Server's default messaging or provide details of external WebSphere MQ server. Messaging provider is required for Decision Server events support. Shown here is the panel from the launchpad where you can provide these details.

## Types of installation - Custom (1 of 2)

- Customized installation using Installation Manager
  - Launchpad provides the prerequisite steps
    - feature selections and input provided in the Installation Manager panels
  - allows installation in an existing Eclipse
  - existing WebSphere Application Server can be used
  - can choose to install the tools for rules and events
  - can install the components on other supported application servers
    - post install configuration needed
  - **Note** – Business Space no longer a prerequisite

You can choose custom installation when you need more control over what components of IBM Operational Decision Manager need to be installed. Custom installation invokes IBM Installation Manager. You can select the various components and their features in installation manager. Custom installation also provides options to install into an existing eclipse environment, existing WebSphere Application server or other supported application servers. You can also choose custom installation to install the development tools in a scenario where your runtime server is located on z/OS environment. Rule designer and event designer are not supported on z/OS. The custom option lets you install the Business Rules Embedded package. To use this package, you need a valid Decision Server license. Launchpad details the various prerequisites and the installable IBM Operational Decision Manager components. You can use the links in launchpad to install the prerequisites and the product components. You will notice that the Business Space is no longer listed as a prerequisite. Event widgets are not utilizing business space in V8.0.1 so it is removed as a prerequisite.

## Types of installation - Custom (2 of 2)

Welcome

Sample Server

Stand-alone Server

**Custom Installation**

Release Information

Exit

### Custom Installation

Install in a shared location for multiple users (requires administrator privileges) ([help me decide](#))

**Prerequisites**

Select the prerequisites needed for your custom installation of IBM Operational Decision Manager

1. **Install IBM Installation Manager V1.6.0**
  - o Installation Manager V1.5.2 or later is required to perform installation of the packages listed on this page (except WebSphere eXtreme Scale).
2. **Install IBM WebSphere Application Server Network Deployment V8.0.0.5**
  - o WebSphere Application Server V8.0.0.4 or later is required if you want to install the server to run the samples and tutorials.
  - o WebSphere Application Server Network Deployment V8.0.0.4 or later is required to install the Event Runtime.
3. **Install IBM WebSphere eXtreme Scale V7.1.1.1**
  - o eXtreme Scale V7.1.1.1 or later is required to install the Event Runtime. Install WebSphere eXtreme Scale in the WebSphere Application Server directory (WAS\_HOME/AppServer).

**IBM Operational Decision Manager**

IBM Operational Decision Manager includes Decision Center, Decision Server, and Business Rules Embedded. Click on the link that corresponds to the package that you want to install. To install all the packages at once, click Install Decision Manager.

1. **Decision Center V8.0.1**
  - o Decision Center is an environment for business users to author, manage and test their business rules and business events.
2. **Decision Server V8.0.1**
  - o Decision Server includes development and runtime environments for business rules and business events.
3. **Business Rules Embedded V8.0.1**
  - o Install the optional Business Rules Embedded component (requires Decision Server license).

11

In

© 2012 IBM Corporation

Shown here is the screen capture of the launchpad outlining the prerequisites and the installable Operational Decision Manager components.

## Types of installation – Silent

- Silent installation using Installation Manager
  - Sample response files provided under <Install\_Images>\disk1\responsefiles
    - installc input *response\_file* -log *log\_file* -acceptLicense
  - If you already have Installation Manager 1.6 installed
    - Generate custom response file using
      - Windows®: IBMIM.exe -record *responseFile* -skipInstall *agentDataLocation*
      - Linux® and UNIX®: ./IBMIM -record *responseFile* -skipInstall *agentDataLocation*
    - Make sure you copy the agentDataLocation folder and point to copy in th
  - Use the response file and silently install the product
    - *Example:*

```
IBMIMc.exe "--launcher.ini" silent-install.ini -input <Path_To_ResponseFile> -log
<Log_File_Location> -accpetLicense true
```

You can install the IBM Operational Decision Management product packages by running Installation Manager in silent installation mode to automate processes, deploy software to multiple systems, or to an enterprise. When you run Installation Manager in silent mode, the user interface is not available. Installation Manager uses a response file that contains the commands required to install the product package. Running Installation Manager in silent mode enables you to automate a process to install, update, modify and uninstall product packages through scripts.

Sample response files are packaged with the product installation images. You can use them as reference and modify any properties as needed to customize for your installation.

You can also create a response file by recording your actions in Installation Manager. IBM Installation Manager provides a way to record a response file without installing or uninstalling a product by adding the optional skipInstall and record arguments. Using skipInstall option makes the installation faster because Installation Manager is not installing the product, it is only recording the installation data. When you record a response file, the selections that you make in Installation Manager are stored in an XML file. You can then use the recorded response file to silently install IBM Operational Decision Manager.

## Known issues (1 of 3)

- MD5 checksum errors during the installation of WebSphere Operational Decision Manager?
  - Errors can occur if you extract the installation image tar file by using the WinZip product
  
- To resolve this issue, configure WinZip:
  1. Open WinZip.
  2. Click **Options > Configuration**, and click the **Miscellaneous** tab.
  3. Clear the **TAR file smart CR/LF conversion** check box.
  4. Extract the Tar file.

For more information about using WinZip, see the item about Tar file smart CR/LF conversion

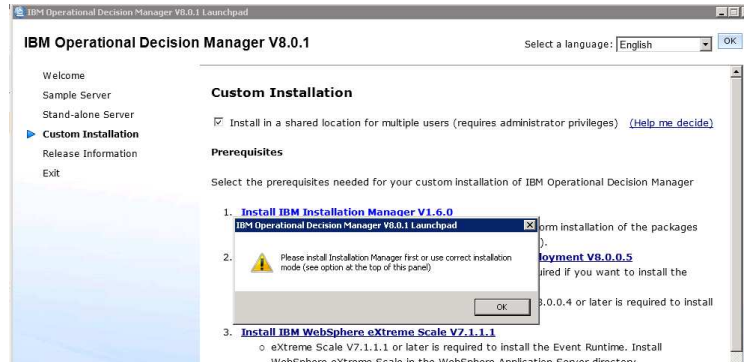
[http://kb.winzip.com/help/help\\_config\\_misc.htm](http://kb.winzip.com/help/help_config_misc.htm).

Alternatively, you can extract the installation Tar file by using a different product, such as 7-Zip

Some of the known issues regarding installation of IBM Operational Decision Manager V8.0.1 are discussed in the next couple of slides. If you are going to use WinZip to extract the installation images which are in tar format, make sure you uncheck the TAR file smart CR/LF conversion check box. If not the installation will fail with error messages reporting checksum errors. Instructions on how to clear the option is shown here.

## Known issues (2 of 3)

- Cannot install IBM Operational Decision Manager V8.0.1 from remote drive
  - Custom installation failure message



14

Installation overview

© 2012 IBM Corporation

IBM Operation Decision Manager V8.0.1 installation images should be available on the local file system of the host on which you are installing the product. Using a remote drive by mapping is not supported. Shown here is a scenario where the custom install path is invoked by using the installation images from mapped drive. When you click the links in the launchpad, you will see the message shown here. The solution for this issue is to copy the installation images locally and then try the custom installation.

## Known issues (3 of 3)

- On Windows 7 if you will see these exceptions in log

- (Oct 30, 2012 11:21:53 AM), Process, com.ibm.ws.install.xd.ismp.actions.XDSetPaksAction, err, Filesystem is not supported: ../custom/maintenance/7.1.1.1-WS-WXS-IFPM57833.pak
  - (Oct 30, 2012 11:21:53 AM), Process, com.ibm.ws.install.xd.ismp.actions.XDSetPaksAction, err, Filesystem is not supported: ../custom/maintenance/7.1.1.1-WS-WXS-IFPM57833.pak
  - (Oct 30, 2012 11:21:53 AM), Process, com.ibm.ws.install.xd.ismp.actions.XDSetPaksAction, err, java.io.IOException: Filesystem is not supported: ../custom/maintenance/7.1.1.1-WS-WXS-IFPM57833.pak  
at com.ibm.ws.install.ni.ismp.utils.ISMPLogUtils.logException(ISMPLogUtils.java:46)  
at com.ibm.ws.install.xd.ismp.actions.XDSetPaksAction.execute(XDSetPaksAction.java:201)  
at com.installshield.wizard.StandardWizardListener.execute(StandardWizardListener.java:123)  
at com.installshield.wizard.StandardWizardListener.currentBeanChanged(StandardWizardListener.java:106)  
at com.installshield.wizard.Wizard\$RunThread.run(Wizard.java:156)

- Solution

- May be installing from remote mounted drive
  - Installation from a mounted drive not supported
  - Copy the installation files locally

Shown here is an error message reported in logs when you install sample server or stand-alone server from a mapped drive on Windows 7. The solution for this problem is to copy to the files locally and restart installation.

## Reference

- Known issues and limitations  
<http://www.ibm.com/support/docview.wss?uid=swg21588177>
- Unable to install Installation Manager on Red Hat Enterprise Linux 6.0/6.1 (64-bit)  
<http://www.ibm.com/support/docview.wss?uid=swg21459143>
- Operational Decision Manager V8.0.1 Download Document  
<http://www.ibm.com/support/docview.wss?uid=swg24033677>
- IBM Operational Decision Manager family installation overview  
[http://pic.dhe.ibm.com/infocenter/dmanager/v8r0m1/topic/com.ibm.wodm.family.install/pdf/wodm\\_family\\_install\\_ibmbook.pdf](http://pic.dhe.ibm.com/infocenter/dmanager/v8r0m1/topic/com.ibm.wodm.family.install/pdf/wodm_family_install_ibmbook.pdf)

Listed on this slide are links to Technotes and documents which provide information on other known issues and limitations. The link listed under “IBM Operational Decision Manager family installation overview,” provides detailed information on various installation types and when to use sample server, stand-alone and custom installation.



## Summary

- This presentation covers details on
  - Installable components
    - Decision Center
    - Decision Server
    - Pre-requisites
  - Types of installation
    - Typical installation
    - Custom installation
    - Silent installation

In this presentation, you were presented with details on the various installable components of IBM Operation Decision Manager V8.0.1. The various types of installation and details on when to choose a certain installation path were also covered.

## Feedback

Your feedback is valuable

You can help improve the quality of IBM Education Assistant content to better meet your needs by providing feedback.

- Did you find this module useful?
- Did it help you solve a problem or answer a question?
- Do you have suggestions for improvements?

Click to send email feedback:

[mailto:iea@us.ibm.com?subject=Feedback\\_about\\_ODM801\\_Installation\\_Overview.ppt](mailto:iea@us.ibm.com?subject=Feedback_about_ODM801_Installation_Overview.ppt)

This module is also available in PDF format at: [../ODM801\\_Installation\\_Overview.pdf]( ../ODM801_Installation_Overview.pdf)

You can help improve the quality of IBM Education Assistant content by providing feedback.



## Trademarks, disclaimer, and copyright information

IBM, the IBM logo, ibm.com, WebSphere, and z/OS are trademarks or registered trademarks of International Business Machines Corp., registered in many jurisdictions worldwide. Other product and service names might be trademarks of IBM or other companies. A current list of other IBM trademarks is available on the web at "[Copyright and trademark information](http://www.ibm.com/legal/copytrade.shtml)" at <http://www.ibm.com/legal/copytrade.shtml>

Linux is a registered trademark of Linus Torvalds in the United States, other countries, or both.

Windows, and the Windows logo are registered trademarks of Microsoft Corporation in the United States, other countries, or both.

UNIX is a registered trademark of The Open Group in the United States and other countries.

Other company, product, or service names may be trademarks or service marks of others.

THE INFORMATION CONTAINED IN THIS PRESENTATION IS PROVIDED FOR INFORMATIONAL PURPOSES ONLY. WHILE EFFORTS WERE MADE TO VERIFY THE COMPLETENESS AND ACCURACY OF THE INFORMATION CONTAINED IN THIS PRESENTATION, IT IS PROVIDED "AS IS" WITHOUT WARRANTY OF ANY KIND, EXPRESS OR IMPLIED. IN ADDITION, THIS INFORMATION IS BASED ON IBM'S CURRENT PRODUCT PLANS AND STRATEGY, WHICH ARE SUBJECT TO CHANGE BY IBM WITHOUT NOTICE. IBM SHALL NOT BE RESPONSIBLE FOR ANY DAMAGES ARISING OUT OF THE USE OF, OR OTHERWISE RELATED TO, THIS PRESENTATION OR ANY OTHER DOCUMENTATION. NOTHING CONTAINED IN THIS PRESENTATION IS INTENDED TO, NOR SHALL HAVE THE EFFECT OF, CREATING ANY WARRANTIES OR REPRESENTATIONS FROM IBM (OR ITS SUPPLIERS OR LICENSORS), OR ALTERING THE TERMS AND CONDITIONS OF ANY AGREEMENT OR LICENSE GOVERNING THE USE OF IBM PRODUCTS OR SOFTWARE.

© Copyright International Business Machines Corporation 2012. All rights reserved.