



IBM Software Group

IBM® Rational® Web Developer V6.0 **IBM® Rational® Application Developer V6.0** *Installation and Updating*



@business on demand.

© 2004 IBM Corporation
Updated January 31, 2005

This presentation will focus on Installation and Updating of IBM Rational Application Developer and IBM Rational Web Developer V6

Goals

- Understand the installation details
- Describe uninstall process
- Discuss update capabilities

Agenda

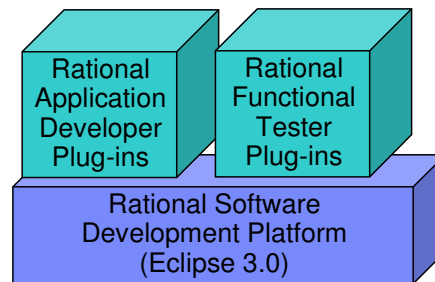
- Installation Overview
- Uninstall
- Product Update Capabilities

Section

Installation

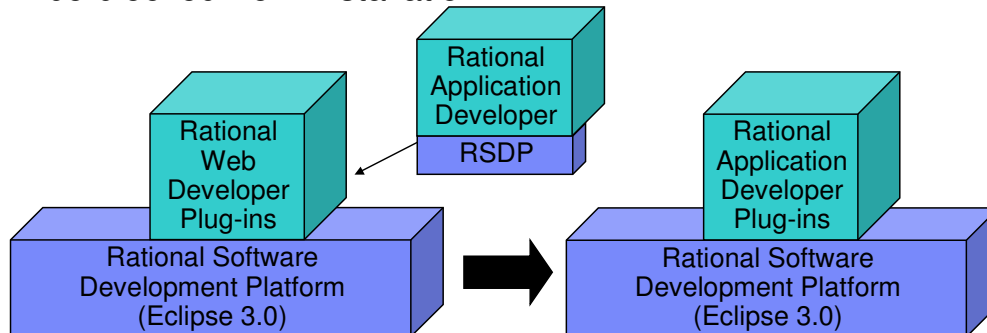
Installation Architecture

- All Rational V6.0 products include the Rational Software Development Platform and Plug-ins
- Rational Software Development Platform provides the basis for all V6.0 products
 - Composed of Eclipse 3.0 and other components
- Rational Software Development Platform is installed once per system as part of Rational product installation
- If the Rational Software Development Platform is found during installation, only plug-ins for the new product are installed



Installation Architecture (cont.)

- Products that contain the functionality of an installed product as well as additional plug-ins will upgrade the installed product
- Products with less functionality than installed products will be blocked from installation



*Complete table of Products and install scenarios in Reference section



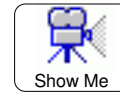
System Software Requirements for Installation

- New supported platforms for IBM Rational Web Developer and IBM Rational Application Developer
 - ▶ Windows™ XP Professional SP2
 - ▶ Red Hat Enterprise Linux® (WS) 3.0 Update 1
 - ▶ SuSE Linux Enterprise Server Version 9.0
 - ▶ Windows 2000 Advanced, Standard Server SP 3 and 4
 - ▶ Windows 2003 Enterprise, Standard Server
- Complete list of supported platforms in Reference section

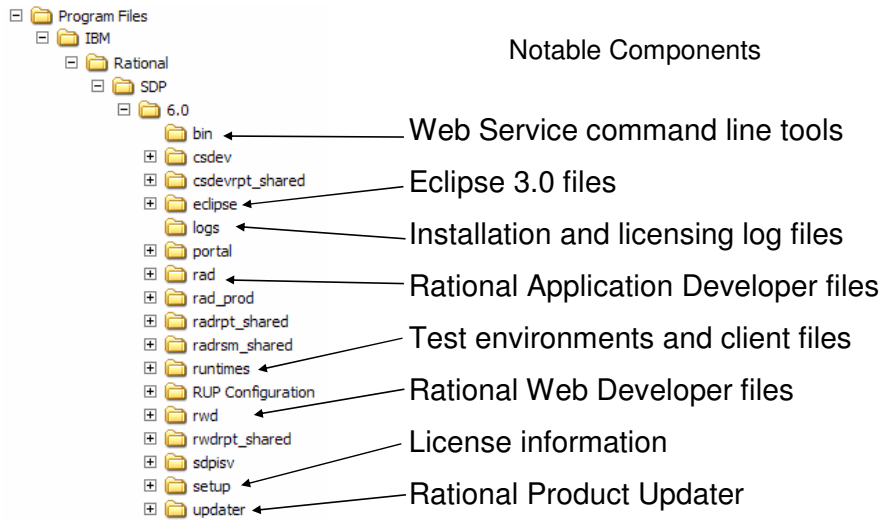
Hardware Requirements and Install Steps

- System hardware requirements
 - ▶ Pentium III 800 MHz
 - ▶ 768 MB RAM minimum (1 GB RAM recommended)
 - ▶ 1024 x 768 video resolution and higher
 - ▶ Most common install needs 2GB
 - System must have 4GB free to install all components
 - ▶ TMP or TEMP directory must have at least 500 MB free

- Install Steps
 - ▶ Start launchpad.exe from <temp_dir>\disk1\
 - WebSphere V6.0 Test Environment, Portlet Development, EGL Development, Language packs, Eclipse plug-in development
 - ▶ Specify installation location
 - Avoid paths any longer than the default path



Installation results on the file system



On Windows, Crystal Reports Embedded Designer installed under
 C:\Program Files\Common Files\Business Objects\ and
 C:\Program Files\Common Files\Crystal Decisions\

Installed Rational Components

- Windows Add/Remove Programs Entries
 - ▶ IBM Rational Application Developer V6.0
 - ▶ Crystal Reports Embeddable Designer for IBM Rational Application Developer
- <IRAD_install_dir>\eclipse\links contains link files indicating installed components
 - ▶ com.ibm.rational.rwd.link
 - ▶ com.ibm.rational.rad.link
 - ▶ com.ibm.rational.portal.link
 - ▶ com.ibm.rational.egl.link
- Each link file points to the installation of the installed product component
 - ▶ Location may be different from location of Rational Software Development Platform install location

Product Configuration

- Registry updated in Windows
 - ▶ HKEY_LOCAL_MACHINE\SOFTWARE\IBM\Rational
 - ▶ HKEY_LOCAL_MACHINE\SOFTWARE\Crystal Decisions\
- Windows 2000
 - ▶ C:\WINNT\IBM\RAT60 created
 - ▶ C:\Document and Settings\%USER_PROFILE%\WINDOWS\IBM\RAT60 created
 - ▶ Entries added in C:\Document and Settings\%USER_PROFILE%\WINDOWS\vpd.properties file
- Windows XP
 - ▶ C:\WINDOWS\IBM\RAT60 created
 - ▶ Entries added in C:\WINDOWS\vpd.properties file
- Linux
 - ▶ All configuration information and resources stored under <IRAD_install_dir>

WebSphere V6.0 Test Environment Install

- Full WebSphere Application Server V6.0 Base installed silently
 - ▶ Silent install option file located at disk3\external\wasV6\rad_responsefile.txt (should not be modified)
 - ▶ Binaries installed to <IRAD_INSTALL_DIR>\runtimes\base_V6
 - ▶ Profile (default) created at <IRAD_INSTALL_DIR>\runtimes\base_V6\profiles\default
- Log files can be checked for successful installation
 - ▶ <IRAD_INSTALL_DIR>\logs\was_V6_out.log
 - ▶ <IRAD_INSTALL_DIR>\runtimes\base_V6\logs\log.txt
 - ▶ <IRAD_INSTALL_DIR>\runtimes\base_V6\logs\wsprofile\wasprofile_create_default.log
 - Check for INSTCONFSUCCESS message at end of file for successful installation
- Installation of Embedded Messaging not required for WebSphere Application Server V6.0
 - ▶ Messaging engine now included with WebSphere Application Server V6.0
- Support not currently available on Windows XP SP2

WebSphere V6.0 Test Environment Install

- Registry updated in Windows
 - ▶ HKEY_LOCAL_MACHINE\SOFTWARE\IBM\License Use Runtime
 - ▶ HKEY_LOCAL_MACHINE\SOFTWARE\IBM\WebSphere Application Server\6.0.0.0
- Windows 2000
 - ▶ Entries added in C:\Document and Settings\%USER_PROFILE%\WINDOWS\vpd.properties file
 - ▶ C:\Document and Settings\%USER_PROFILE%\WASRegistry created
- Windows XP
 - ▶ Entries added in C:\WINDOWS\vpd.properties file
 - ▶ %USERPROFILE%\WASRegistry created
- Linux
 - ▶ All configuration information and resources stored under <IRAD_install_dir>

Installation Hints and Other Information

- Installation may be longer than WebSphere Studio
 - ▶ WebSphere V6.0 Test Environment takes longer to install than previous versions
- Check disk1\readme.html for additional limitations and workarounds
- WebSphere V5.0 Test Environments, WebSphere Portal V5.0 Test Environments Agent Controller, Embedded Messaging, Crystal Enterprise V10 Professional and Embedded are separate installs



ClearCase LT is now available for download and not included with the IBM Rational Web and Application Developer media.

Section

Licensing

Licensing

- IBM Rational Web Developer and IBM Rational Application Developer include a license as part of product
 - ▶ License registered automatically when product is installed
 - ▶ Separate license manager is not required
- License information location
 - ▶ Windows
 - C:\Documents and Settings\All Users\Application Data\IBMLUM\nodelock
 - ▶ Linux
 - /var/lum/nodelock
- License installation/registration results stored in <IRAD_install_dir>\logs\license.log
- If licensing fails (i.e. permission problem), it can be manually executed
 - ▶ <IRAD_install_dir>\setup\lum\rad\enroll rad-6.0-full.lic

Section

Uninstall

Uninstall

- Windows
 - ▶ Add/Remove Programs
 - Remove IBM Rational Web/Application Developer V6
 - WebSphere Application Server V6 removed through IBM Rational Web/Application Developer uninstall
 - Remove Crystal Reports Embeddable Designer for IBM Rational Application Developer
 - ▶ Command line - Available silently
 - IBM Rational Application Developer <IRAD_install_dir>\rad_prod_uninst\uninstall.exe –silent
 - IBM Rational Web Developer <IRWD_install_dir>\rwd_prod_uninst\uninstall.exe –silent
- Linux
 - ▶ <IRAD_install_dir>/rad_prod/_uninst/uninstall.bin
 - Available silently with –silent option
- If other Rational products that share the Rational Software Development Platform are installed, these products will not be affected

Artifacts remain after uninstall completes

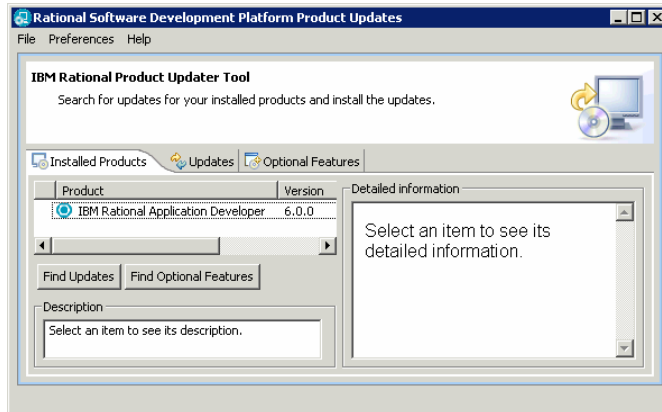
- Artifacts remaining on common Windows installations
 - ▶ <IRAD_INSTALL_DIR>\ still exists
 - ▶ <IRAD_INSTALL_DIR>\runtimes\base_V6\logs\uninstlog.txt contains uninstall results for WebSphere V6.0 Test Environment
 - ▶ C:\Program Files\Common Files\Crystal Decisions and C:\Program Files\Common Files\Business Objects\ still exists
 - ▶ %USER_PROFILE%\WINDOWS\vpd.properties is clean
 - ▶ %USER_PROFILE%\WASRegistry cleared of WebSphere V6.0 Test Environment entry
 - ▶ HKEY_LOCAL_MACHINE\SOFTWARE\IBM\License Use Runtime\ still exists
 - ▶ HKEY_LOCAL_MACHINE\SOFTWARE\Crystal Decisions\ still exists
 - ▶ License information remains in C:\Documents and Settings\All Users\Application Data\IBM\LUM\nodelock
- Windows 2000
 - ▶ %USER_PROFILE%\WINDOWS\IBM\RAT60 still exists
- Windows XP
 - ▶ C:\WINDOWS\IBM\RAT60 still exists
- Linux (SuSE 9.0)
 - ▶ <IRAD_INSTALL_DIR>/ and some subdirectories remain
- Recommendation is to remove <IRAD_INSTALL_DIR> and RAT60 folder

Section

Product Updater

Product Updater

- Provides interface for updating different Rational products installed on Common Desktop Install
 - Replaces Update/Install perspective



- Preconfigured sites are searched or custom site can be added under Preferences
- Also find updates for the Product Updater

Find Updates

IBM Rational Product Updater Tool:

<http://www3.software.ibm.com/ibmdl/pub/software/rationalsdp/updater/60/update/site.xml>

Invalid update site URL for IBM Rational Application Developer:

<http://www3.software.ibm.com/ibmdl/pub/software/rationalsdp/rad/60/update>

Find Optional Features

<http://www3.software.ibm.com/ibmdl/pub/software/rationalsdp/rad/60/discovery>

Section

Summary and Reference

Summary and References

- Rational Software Development Platform provides the basis for all Rational V6.0 products
- Product Updater can add features and updates to installed products for easier maintenance

Section

Reference

Rational V6.0 Product Coexistence

Attempt to Install

Already Installed

	Rational Software Modeler	Rational Web Developer	Rational Application Developer	Rational Software Architect	Rational Functional Tester
Rational Software Modeler	N/A	Share	Share	Upgrade	Share
Rational Web Developer	Share	N/A	Upgrade	Upgrade	Share
Rational Application Developer	Share	Block	N/A	Upgrade	Share
Rational Software Architect	Block	Block	Block	N/A	Share
Rational Functional Tester	Share	Share	Share	Share	N/A

Supported Platforms

- Complete list of supported platforms for Rational Web/Application Developer
 - ▶ Windows XP Professional SP 1,2
 - ▶ Windows 2000 Professional SP 3,4
 - ▶ Linux Intel – Red Hat Enterprise Linux (WS) 3.0 Update 1
 - ▶ SuSE Linux Enterprise Server (SLES) 9.0
 - ▶ Windows 2000 Advanced Server SP 3, 4
 - ▶ Windows 2000 Standard Server SP 3, 4
 - ▶ Windows 2003 Standard Server
 - ▶ Windows 2003 Enterprise Server

- Platforms no longer supported since V5.1.2
 - ▶ Windows NT 4.0 SP 6a
 - ▶ Windows NT Server 4.0 SP 6a
 - ▶ SuSE Linux 8.1
 - ▶ SuSE Linux for Intel 7.2 [2.4 Kernel]
 - ▶ Red Hat Linux 8.0
 - ▶ Red Hat Linux 7.2 [2.4 Kernel]

Silent Install options

- Silent install features separately or together in an option file
 - ▶ Separately: `setup –silent –P feature_was4_win.active=true`
 - ▶ Option file: `setup –silent –options “<dir location>\yourresponsefile.txt”`

Optional feature	Response file entry
Install directory for Rational Application Developer	<code>installLocation=“<dir location>”</code>
WebSphere Application Server Version 6.0	<code>feature_was6_win32.active=true</code>
Language Pack	<code>feature_lang_pack_rad_win32.active=true</code>
EGL Plug-ins	<code>feature_egl_win32.active=true</code>
Portal tools	<code>feature_portal_win32.active=true</code>
Examples for Eclipse Plug-in Development	<code>feature_examples_win32.active=true</code>

- Replace “win32” with “linux” for silent install options on Linux

Trademarks, Copyrights, and Disclaimers

The following terms are trademarks or registered trademarks of International Business Machines Corporation in the United States, other countries, or both:

IBM	CICS	IMS	MQSeries	Tivoli
IBM (logo)	Cloudscape	Informix	OS/390	WebSphere
eIogo business	DB2	Series	OS/400	xSeries
AIX	DB2 Universal Database	Lotus	pSeries	zSeries

Java and all Java-based trademarks are trademarks of Sun Microsystems, Inc. in the United States, other countries, or both.

Microsoft, Windows, Windows NT, and the Windows logo are registered trademarks of Microsoft Corporation in the United States, other countries, or both.

Intel, ActionMedia, LANDesk, MMX, Pentium and ProShare are trademarks of Intel Corporation in the United States, other countries, or both.

UNIX is a registered trademark of The Open Group in the United States and other countries.

Linux is a registered trademark of Linus Torvalds.

Other company, product and service names may be trademarks or service marks of others.

Product data has been reviewed for accuracy as of the date of initial publication. Product data is subject to change without notice. This document could include technical inaccuracies or typographical errors. IBM may make improvements and/or changes in the product(s) and/or program(s) described herein at any time without notice. Any statements regarding IBM's future direction and intent are subject to change or withdrawal without notice, and represent goals and objectives only. References in this document to IBM products, programs, or services does not imply that IBM intends to make such products, programs or services available in all countries in which IBM operates or does business. Any reference to an IBM Program Product in this document is not intended to state or imply that only that program product may be used. Any functionally equivalent program, that does not infringe IBM's intellectual property rights, may be used instead.

Information is provided "AS IS" without warranty of any kind. THE INFORMATION PROVIDED IN THIS DOCUMENT IS DISTRIBUTED "AS IS" WITHOUT ANY WARRANTY, EITHER EXPRESS OR IMPLIED. IBM EXPRESSLY DISCLAIMS ANY WARRANTIES OF MERCHANTABILITY, FITNESS FOR A PARTICULAR PURPOSE OR NONINFRINGEMENT. IBM shall have no responsibility to update this information. IBM products are warranted, if at all, according to the terms and conditions of the agreements (e.g., IBM Customer Agreement, Statement of Limited Warranty, International Program License Agreement, etc.) under which they are provided. Information concerning non-IBM products was obtained from the suppliers of those products, their published announcements or other publicly available sources. IBM has not tested those products in connection with this publication and cannot confirm the accuracy of performance, compatibility or any other claims related to non-IBM products. IBM makes no representations or warranties, express or implied, regarding non-IBM products and services.

The provision of the information contained herein is not intended to, and does not, grant any right or license under any IBM patents or copyrights. Inquiries regarding patent or copyright licenses should be made, in writing, to:

IBM Director of Licensing
IBM Corporation
North Castle Drive
Armonk, NY 10504-1785
U.S.A.

Performance is based on measurements and projections using standard IBM benchmarks in a controlled environment. All customer examples described are presented as illustrations of how those customers have used IBM products and the results they may have achieved. The actual throughput or performance that any user will experience will vary depending upon considerations such as the amount of multiprocessing in the user's job stream, the I/O configuration, the storage configuration, and the workload processed. Therefore, no assurance can be given that an individual user will achieve throughput or performance improvements equivalent to the ratios stated here.

© Copyright International Business Machines Corporation 2004. All rights reserved.

Note to U.S. Government Users - Documentation related to restricted rights-Use, duplication or disclosure is subject to restrictions set forth in GSA ADP Schedule Contract and IBM Corp.