



IBM Software Group

IBM® Rational® Application Developer V6.0

ClearCase® Plug-in New Features



@business on demand.

© 2004 IBM Corporation
Updated January 25, 2005

Goals

- To understand the new ClearCase Plug-in features in IBM Rational Application Developer V6.0.



To understand the new team programming features in IBM Rational Application Developer V6.0.

At the end of the presentation, you will know how to use the new features in IBM Rational Application Developer V6.0.

Agenda

- Overview
- ClearCase Plug-in
- Summary
- References

Overview

ClearCase SCM Adapter – new features

ClearCase Remote Client for Eclipse

ClearQuest Client for Eclipse

CVS New Features

Summary / References / Glossary

ClearCase: Overview

- When a team of developers edit the same piece of code at the same time, team programming software is needed to manage their source code so that it is not lost, overwritten, etc.
- In IBM Rational Application Developer V6.0 provides Eclipse based CVS and ClearCase plug-ins to help developers solve this problem.



When a team of developers edit the same piece of code at the same time, team programming software is needed to manage their source code so that it is not lost, overwritten, etc.

In IBM Rational Application Developer V6.0 answers with Eclipse based CVS and ClearCase plug-ins to help developers solve this problem.

ClearCase: Overview

- Rational ClearCase (CC) is a comprehensive client-server tool for version control, workspace management, and build management
 - ▶ Allows for the version control of files and directories into a version tree
 - ▶ Stores versioned data in a network-accessible Version Object Bases or VOB (repository)
- ClearCase has two pieces, a server and a client
 - ▶ IBM Rational Application Developer V6.0 provides the client software (or plug-in) that connects to a ClearCase server
 - ▶ The client piece provides all the control functions (synchronize, checkout, update, etc)
 - ▶ The server holds the VOBs and stores the information
- Supports both pessimistic and optimistic version control models
- Prerequisites
 - ▶ Install ClearCase Server on Windows™ NT/2000/Server machine
 - ▶ NTFS hard-drive format needed



So what is ClearCase? Rational ClearCase (CC) is a comprehensive client-server tool for version control, workspace management, and build management. It allows for the version control of files and directories into a version tree. Then it stores this versioned data in a network-accessible Version Object Bases or VOB (repository).

ClearCase has two pieces, a server and a client. IBM Rational Application Developer V6.0 provides the client software (or plug-in) that connects to a ClearCase server. The client piece provides all the control functions (synchronize, checkout, update, etc). The server holds the VOBs and stores the information. Supports both pessimistic and optimistic version control models

Prerequisites

Install ClearCase Server on Windows NT/2000/Server machine

NTFS hard-drive format needed

Glossary

- CC LT = ClearCase Light
- CC SCM = ClearCase, Source Control Management
- SDP = Software Development Platform (Rational SDP)
- Atlantic = The name for all Rational software based on Eclipse v3.0.
- RCP = Rich Client Platform, Eclipse base.
- SR3/SR4 = Service Release 3/ Service Release 4
- ClearCase Plug-in = Rational SCM Adapter Plug-in

Since there are new additions to the ClearCase lineup, it is necessary to introduce a few acronyms....

CC LT = ClearCase Light

CC SCM = ClearCase, Source Control Management

SDP = Software Development Platform (Rational SDP)

Atlantic = The name for all Rational software based on Eclipse v3.0.

RCP = Rich Client Platform, Eclipse base.

SR3/SR4 = Service Release 3/ Service Release 4

ClearCase Plug-in = Rational SCM Adapter Plug-in

CVS = Concurrent Versions System

VOB = Version Object Base

Section

ClearCase Plug-in

ClearCase Plug-in: New Features Overview

- The ClearCase Plug-in (a.k.a. - CC SCM Adapter Plug-in) is included with all Atlantic SDP products
- ClearCase Plug-in is installed by default with base IBM Rational Application Developer V6.0.
- ClearCase server (full or light version) still needs to be installed, still is an option from install window




CC SCM Adapter is included with all Atlantic SDP products

CC LT v2003.06.13 (SR3) is included with all Atlantic SDP products, with the exception of RWD.

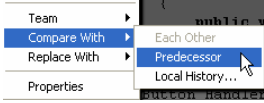
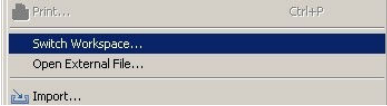
CC SCM Adapter is installed by default. No need to choose optional component at install time

ClearCase server (full or light version) still needs to be installed.

IBM Software Group 

ClearCase Plug-in: New Features

- Improved compare/merge support
 - ▶ Integrated with Eclipse compare/merge framework
- Workspace / view management
 - ▶ Support for workspace switching (Eclipse feature)
- Best practices and online help improvements
- Improved Disconnected Mode
 - ▶ Manual Disconnect option
 - ▶ New preference to auto-hijack a file when editing in disconnected mode
- Miscellaneous usability enhancements
 - ▶ New Join Project operation from the ClearCase Menu bar
 - ▶ Background task for connect operation
 - ▶ Auto-connect disabled by default

9
ClearCase Plug-in New Features © 2004 IBM Corporation

Improved compare/merge support

Integrated with Eclipse compare/merge framework

Manual Disconnect option – previously you would have to shut down the IDE and bring it back up and choose not to connect.

Workspace / view management

Support for workspace switching
(Eclipse feature)

Best practices and online help improvements

Improved Disconnected Mode

Manual Disconnect option

New preference to auto-hijack a file when editing in disconnected mode

Miscellaneous usability enhancements

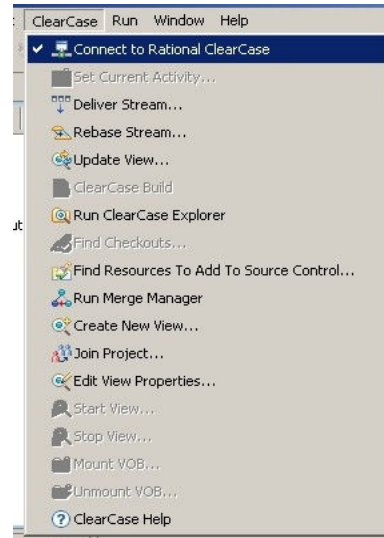
New Join Project operation from the ClearCase Menu bar

Background task for connect operation

Auto-connect disabled by default

ClearCase Plug-in: Capabilities

- ClearCase Plug-in (SCM Adapter Plug-in) added to new Eclipse “Capabilities” feature
 - ▶ allows for a plug-ins menus and functions to appear/disappear as needed
- The ClearCase Plug-in capability is **disabled** by default
- Automatically enabled under following conditions:
 - ▶ CC/CC LT is detected at IBM Rational Application Developer V6.0 startup
 - ▶ A project is imported from a ClearCase view
 - ▶ A project is added to source control (using Team > Share) in a CC view
- Can be turned on and off manually. Go to Window > Preferences > Workbench > Capabilities > Team > ClearCase SCM Adapter.



CC SCM Adapter added to new Eclipse “Capabilities” feature.

Capabilities allow for a plug-ins menus and functions to be turned on and off as needed.

CC SCM Adapter capability is disabled by default and are automatically enabled under following conditions:

CC/CC LT is detected at IBM Rational Application Developer V6.0 startup

A project is imported from a ClearCase view

A project is added to source control (using Team > Share) in a CC view

Can be turned on and off manually. Go to Window > Preferences > Workbench > Capabilities > Team > ClearCase SCM Adapter.

ClearCase Plug-in: Preferences

- Diff Merge Patterns preference page allows user to specify the file patterns they wish to merge using either native CC Diff Merge tools or Eclipse tools
 - ▶ Only valid for file types that can be compared/merged in Eclipse
- New Compare/Merge Server preference page to control behavior of the Eclipse compare/merge server
 - ▶ Important for compares/merges that are invoked externally
- New preferences to control hijack status when files are edited
 - ▶ Allow for more control of how files are treated when working offline
- Changed preferences:
 - ▶ Auto connect to ClearCase, disabled by default.
 - ▶ Fetch CC status on demand only, enabled by default, improves performance.



Diff Merge Patterns preference page allows user to specify the file patterns they wish to merge using either native CC Diff Merge tools or Eclipse tools

Only valid for file types that can be compared/merged in Eclipse

New Compare/Merge Server preference page to control behavior of the Eclipse compare/merge server

Important for compares/merges that are invoked externally

New preferences to control hijack status when files are edited

Allow for more control of how files are treated when working offline

Preference to manually enable/disable capability is under Workbench > Capabilities > ClearCase SCM Adapter

Changed preferences:

Auto connect to ClearCase, disabled by default.

Fetch CC status on demand only, enabled by default, improves performance.

ClearCase Plug-in: Preferences

ClearCase SCM Adapter

When files under source control are edited or saved and...

- Checked in files are edited by an internal, interactive editor: Prompt to checkout
- Checked in files are edited by an internal, non-interactive editor: Automatically checkout
- Checked in files are saved by an internal editor: Automatically checkout

For all of the above preferences, if checkout is allowed:

- Do not hijack in snapshot views
- Always hijack in snapshot views
- Hijack in snapshot views when disconnected

When workspace is closed: Prompt to checkin

When new resources are added: Prompt to add to source control

ClearCase decorations: Enable Icon Decorations

When parent directory is automatically checked out to move, rename, or delete an element: Automatically check in parent directory

Save dirty editors before ClearCase operations: Prompt to save all editors

Build command: make -s -f "\${ProjPath}/\${ProjName}.mak

Automatically connect to ClearCase on startup

Set default to check out files after adding them to source control

Perform Refresh Status operations recursively

Decorate project root names with viewtags

Request Status information on demand only

Advanced Options...

Restore Defaults Apply

OK Cancel

Diff Merge Options

ClearCase Plug-in: Known Limitations

- Eclipse compare/merge integration will only work for
 - ▶ performing comparisons from within IBM Rational Application Developer V6.0
 - ▶ for merges that result from checking in a old file (not the latest version of a file)
- All compares/merges that occur external to RAD will result in bringing up the native CC DiffMerge tools, regardless of Compare/merge preference



Know Limitations

Eclipse compare/merge integration will only work for performing comparisons from within RAD or for merges that result from checking in a non-LATEST file

All compares/merges that occur external to RAD will result in bringing up the native CC DiffMerge tools, regardless of Compare/merge preference

Summary

- Rational ClearCase Plug-in has a few new features in IBM Rational Application Developer V6.0
- The ClearCase plug-in is installed with IBM Rational Application Developer V6.0, no separate install
- The ClearCase plug-in is part of Eclipse's Capabilities technology
- There are a few limitations with Eclipse's Compare/Merge and V6's Diff/Merge



Rational ClearCase Plug-in has a few new features in IBM Rational Application Developer V6.0

The ClearCase plug-in is installed with IBM Rational Application Developer V6.0, no separate install

The ClearCase plug-in is part of Eclipse's Capabilities technology

There are a few limitations with Eclipse's Compare/Merge and V6's Diff/Merge

The ClearCase Plug-in will be superceded by the ClearCase Remote Client

References

- ClearCase Plug-in (SCM Adapter Plug-in)
 - <http://www-128.ibm.com/developerworks/rational/library/1376.html>
 - <http://www-306.ibm.com/software/awdtools/clearcase/>

Trademarks, Copyrights, and Disclaimers

The following terms are trademarks or registered trademarks of International Business Machines Corporation in the United States, other countries, or both:

IBM	CICS	IMS	MQSeries	Tivoli
IBM (logo)	Cloudscape	Informix	OS/390	WebSphere
e(logo)/business	DB2	iSeries	OS/400	xSeries
AIX	DB2 Universal Database	Lotus	pSeries	zSeries

Java and all Java-based trademarks are trademarks of Sun Microsystems, Inc. in the United States, other countries, or both.

Microsoft, Windows, Windows NT, and the Windows logo are registered trademarks of Microsoft Corporation in the United States, other countries, or both.

Intel, ActionMedia, LANDesk, MMX, Pentium and ProShare are trademarks of Intel Corporation in the United States, other countries, or both.

UNIX is a registered trademark of The Open Group in the United States and other countries.

Linux is a registered trademark of Linus Torvalds.

Other company, product and service names may be trademarks or service marks of others.

Product data has been reviewed for accuracy as of the date of initial publication. Product data is subject to change without notice. This document could include technical inaccuracies or typographical errors. IBM may make improvements and/or changes in the product(s) and/or program(s) described herein at any time without notice. Any statements regarding IBM's future direction and intent are subject to change or withdrawal without notice, and represent goals and objectives only. References in this document to IBM products, programs, or services does not imply that IBM intends to make such products, programs or services available in all countries in which IBM operates or does business. Any reference to an IBM Program Product in this document is not intended to state or imply that only that program product may be used. Any functionally equivalent program, that does not infringe IBM's intellectual property rights, may be used instead.

Information is provided "AS IS" without warranty of any kind. THE INFORMATION PROVIDED IN THIS DOCUMENT IS DISTRIBUTED "AS IS" WITHOUT ANY WARRANTY, EITHER EXPRESS OR IMPLIED. IBM EXPRESSLY DISCLAIMS ANY WARRANTIES OF MERCHANTABILITY, FITNESS FOR A PARTICULAR PURPOSE OR NONINFRINGEMENT. IBM shall have no responsibility to update this information. IBM products are warranted, if at all, according to the terms and conditions of the agreements (e.g., IBM Customer Agreement, Statement of Limited Warranty, International Program License Agreement, etc.) under which they are provided. Information concerning non-IBM products was obtained from the suppliers of those products, their published announcements or other publicly available sources. IBM has not tested those products in connection with this publication and cannot confirm the accuracy of performance, compatibility or any other claims related to non-IBM products. IBM makes no representations or warranties, express or implied, regarding non-IBM products and services.

The provision of the information contained herein is not intended to, and does not, grant any right or license under any IBM patents or copyrights. Inquiries regarding patent or copyright licenses should be made, in writing, to:

IBM Director of Licensing
IBM Corporation
North Castle Drive
Armonk, NY 10504-1785
U.S.A.

Performance is based on measurements and projections using standard IBM benchmarks in a controlled environment. All customer examples described are presented as illustrations of how those customers have used IBM products and the results they may have achieved. The actual throughput or performance that any user will experience will vary depending upon considerations such as the amount of multiprogramming in the user's job stream, the I/O configuration, the storage configuration, and the workload processed. Therefore, no assurance can be given that an individual user will achieve throughput or performance improvements equivalent to the ratios stated here.

© Copyright International Business Machines Corporation 2004. All rights reserved.

Note to U.S. Government Users - Documentation related to restricted rights-Use, duplication or disclosure is subject to restrictions set forth in GSA ADP Schedule Contract and IBM Corp.