

The slide features a blue background with a white grid pattern. At the top right is the IBM logo. Below it, the text 'IBM Software Group | Rational software' is displayed. The main title 'IBM Rational Build Forge' is in large, bold black font. Below the title is the subtitle 'Setting up adaptors in the management console' in a smaller, bold black font. A 'Rational software' logo is positioned below the subtitle. A horizontal bar with various icons (including a person, a globe, and a network diagram) spans the width of the slide. At the bottom right, the text '@business on demand.' is visible, along with copyright information '© 2007, 2008 IBM Corporation' and 'Converted to video June 29, 2015'.

This module will cover setting up adaptors in the IBM Rational® Build Forge® Management Console

Module objectives

- The following topics are covered in this section:
 - ▶ Setting up the adaptor in the management console
 - ▶ Setting up adaptor links in the management console



This presentation will cover Build Forge Adaptor functionality. It will tell about where adaptors fit into the overall picture of Build Forge; including what adaptors are, when to use them, and when to use linked adaptors. By the end of this presentation you should have a better understanding of what adaptors are and when it would be appropriate to use them.

Setting up an adaptor in Build Forge

- Basics of setting up an adaptor in the Build Forge interface
- Note: The architecture of the adaptor has not changed since 3.8, but the console interface has.



This module will start with the basics of setting up an adaptor in the Build Forge Interface. One important thing to note is that the architecture of the Adaptor has not changed since version 3.8, but the Console interface has. Version 3.8 users will notice a different process when using the console interface.

Setting up an adaptor

- **Projects -> Adaptors**

CCbyDate Save Adaptor Copy Adaptor Delete Adaptor

Details

Name: CCbyDate

Type: Source Template: ClearCaseByDate Access: Build Engineer

Interface: `<?xml version="1.0"?>
<!-- (c) Copyright by IBM Corp. and other(s) [2003], 2007 All Rights Reserved. -->
<!DOCTYPE PROJECT_INTERFACE SYSTEM "interface.dtd">`

Setting up adaptors in the management console © 2007, 2008 IBM Corporation 4

Shown here is a screen capture of the page to create an Adaptor. To access the adaptor section from the console, select Projects → Adaptors.

Note: The location of the adaptor menu has changed since version 7.0. (formerly it was accessed from Administration -> Adaptors).

Adaptor fields

- The adaptor specification has several fields to be defined:
 - ▶ Name – The name of the adaptor
 - ▶ Mode – This defines the category that the adaptor belongs to
 - Source
 - Defect
 - Test
 - ▶ Template – This lists the adaptor templates that exist on the system.
 - ▶ Access – This defines what group will own the adaptor.



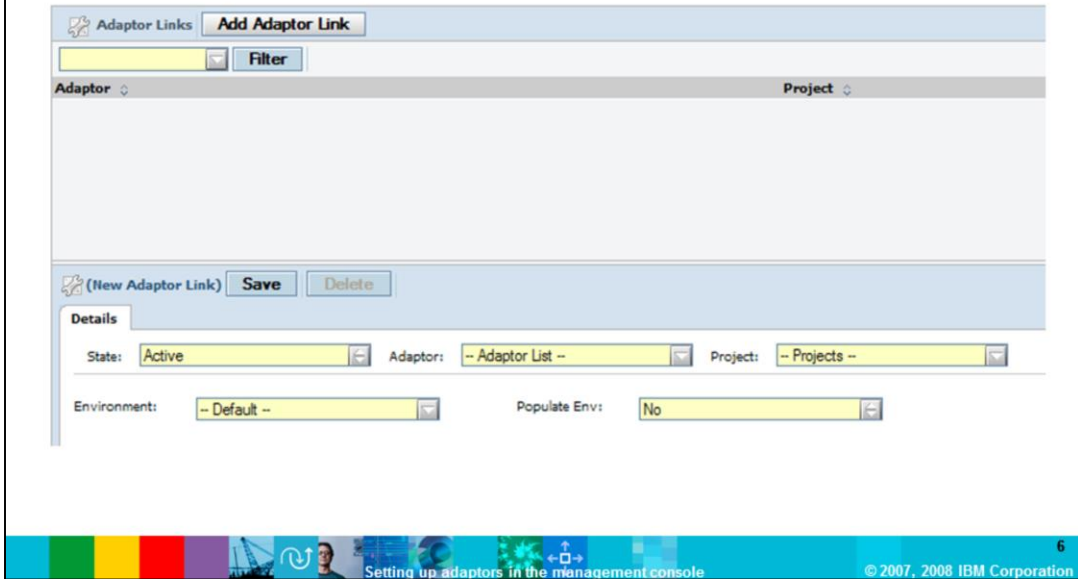
The adaptor requires that these fields be defined: Name, Mode, Type, Template, and Access. The name is the user-defined name for the instance of this adaptor you are creating. The Mode is split up into Source, Defect, and Test. The template section does not need to be specified, but if you want to implement a template, or start from a template you would define that template here and then it would appear in the interface body below. Access defines which Build Forge access group would have permissions to this adaptor.

The Mode field is a new bit of functionality specific to 7.0. The idea is that the adaptors can be further categorized into parts.

From a functional standpoint, there is no difference between the adaptor mode types at this time.

Setting up an adaptor link

- **Projects -> Adaptor Links**



Like the Adaptor menu, the location of the Adaptor link menu has changed since version 7.0. It is now found under Projects -> Adaptor Links. It was formerly located under Administration -> Adaptor Links.

Adaptor links

- **State** – The state that this adaptor should run under
 - ▶ Active
 - ▶ Debug
 - ▶ Inactive
- **Adaptor** – What adaptor are you linking. Note: Those adaptors that are already linked will not appear here.
- **Project** - What project is the adaptor being linked to?
- **Environment** – When running the adaptor link what environment should the adaptor use
- **Populate Env** - If that value is set to yes, then the environment selected will be populated with all the variables defined in the template block of the adaptor



The adaptor link requires five fields to be defined: State, Adaptor, Project, Environment, and Populate Env.

The **state** defines what states the adaptor should run in and it has three options. Active means run the link as usual. Debug means that the link should only run the Adaptor, and do not delete the build if the adaptor fails. This is to debug the adaptor if there is a problem. If the debug option is not selected and the build fails there will be no build log to look at as it will be deleted. The last option is the inactive which turns off the link.

The **adaptor** is where you define what adaptor you want to link. This is slightly different since the 7.0.1 release. Before, in version 7.0 you would need to define a new adaptor and instantiate it in the Adaptor menu. In 7.0.1 and later you can select the template directly and not create an actual instance of the Adaptor to run.

Project is straightforward. Select which project you want to link the adaptor to.

The **environment** entry is for selecting which environment the link should start with. Remember that you need to reference an environment that defines all the variables you defined in your template. The adaptor link will not enforce this, therefore, you need to verify before you run the link.

Finally, if you set “Yes” for the **Populate Env** option, when you save the link, the variables and values defined in the template section will be added to that environment as discussed in the previous module.

Summary

- Setting up the adaptor in the management console
 - ▶ Adaptor Fields - Name, Mode, Type, Template, and Access
- Setting up adaptor links in the management console
 - ▶ Adaptor Links - State, Adaptor, Project, Environment, and Populate Env
- For more information on Build Forge or adaptors, visit <http://www.ibm.com/software/rational>



In summary, you should now have a better understanding of setting up adaptors in the management console. This module covered the adaptor fields and what each field means. You should also know how to set up adaptor links in the management console, including: defining adaptor links like state, adaptor, project, environment, and populate env.

Trademarks, copyrights, and disclaimers

The following terms are trademarks or registered trademarks of International Business Machines Corporation in the United States, other countries, or both:

Build Forge IBM Rational

Rational is a trademark of International Business Machines Corporation and Rational Software Corporation in the United States, Other Countries, or both.

Product data has been reviewed for accuracy as of the date of initial publication. Product data is subject to change without notice. This document could include technical inaccuracies or typographical errors. IBM may make improvements or changes in the products or programs described herein at any time without notice. Any statements regarding IBM's future direction and intent are subject to change or withdrawal without notice, and represent goals and objectives only. References in this document to IBM products, programs, or services does not imply that IBM intends to make such products, programs or services available in all countries in which IBM operates or does business. Any reference to an IBM Program Product in this document is not intended to state or imply that only that program product may be used. Any functionally equivalent program, that does not infringe IBM's intellectual property rights, may be used instead.

Information is provided "AS IS" without warranty of any kind. THE INFORMATION PROVIDED IN THIS DOCUMENT IS DISTRIBUTED "AS IS" WITHOUT ANY WARRANTY, EITHER EXPRESS OR IMPLIED. IBM EXPRESSLY DISCLAIMS ANY WARRANTIES OF MERCHANTABILITY, FITNESS FOR A PARTICULAR PURPOSE OR NON-INFRINGEMENT. IBM shall have no responsibility to update this information. IBM products are warranted, if at all, according to the terms and conditions of the agreements (for example, IBM Customer Agreement, Statement of Limited Warranty, International Program License Agreement, etc.) under which they are provided. Information concerning non-IBM products was obtained from the suppliers of those products, their published announcements or other publicly available sources. IBM has not tested those products in connection with this publication and cannot confirm the accuracy of performance, compatibility or any other claims related to non-IBM products.

IBM makes no representations or warranties, express or implied, regarding non-IBM products and services.

The provision of the information contained herein is not intended to, and does not, grant any right or license under any IBM patents or copyrights. Inquiries regarding patent or copyright licenses should be made, in writing, to:

IBM Director of Licensing
IBM Corporation
North Castle Drive
Armonk, NY 10504-1785
U.S.A.

Performance is based on measurements and projections using standard IBM benchmarks in a controlled environment. All customer examples described are presented as illustrations of how those customers have used IBM products and the results they may have achieved. The actual throughput or performance that any user will experience will vary depending upon considerations such as the amount of multiprogramming in the user's job stream, the I/O configuration, the storage configuration, and the workload processed. Therefore, no assurance can be given that an individual user will achieve throughput or performance improvements equivalent to the ratios stated here.

© Copyright International Business Machines Corporation 2007. All rights reserved.

Note to U.S. Government Users - Documentation related to restricted rights-Use, duplication or disclosure is subject to restrictions set forth in GSA ADP Schedule Contract and IBM Corp.

