



IBM Education Assistant

**IBM Rational ClearCase™ (version 7.x)
Unified Change Management™**

Exercise 2: Creating UCM Projects

Rational. software



© Copyright International Business Machines Corporation 2005, 2006, 2007. All rights reserved. Note to U.S. Government Users Restricted Rights -- Use, duplication or disclosure restricted by GSA ADP. Schedule Contract with IBM Corp.

Contributors: Marcus Matic, Alex Grillakis, and Will Frontiero



Exercise 2: Creating UCM Projects

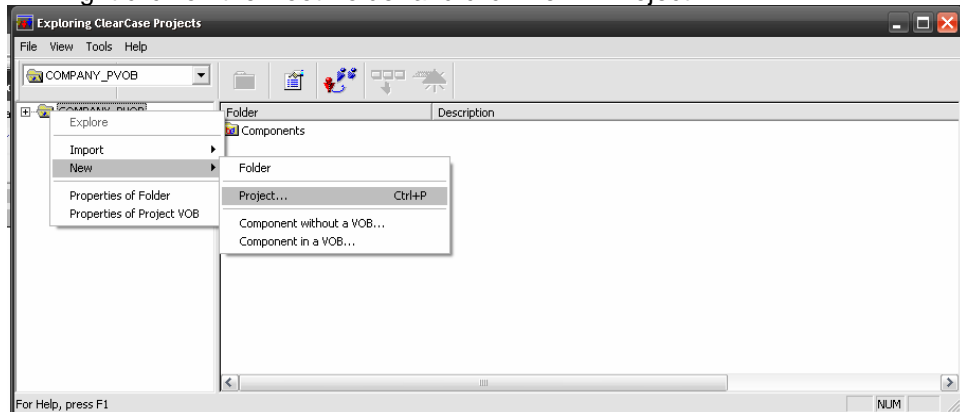
What is a UCM Project:

UCM Projects are UCM objects that contain configuration information used to set default behavior and policies that govern how developers open and update the set of files and directories used by the project. You must be the project owner or privileged user to modify project properties.

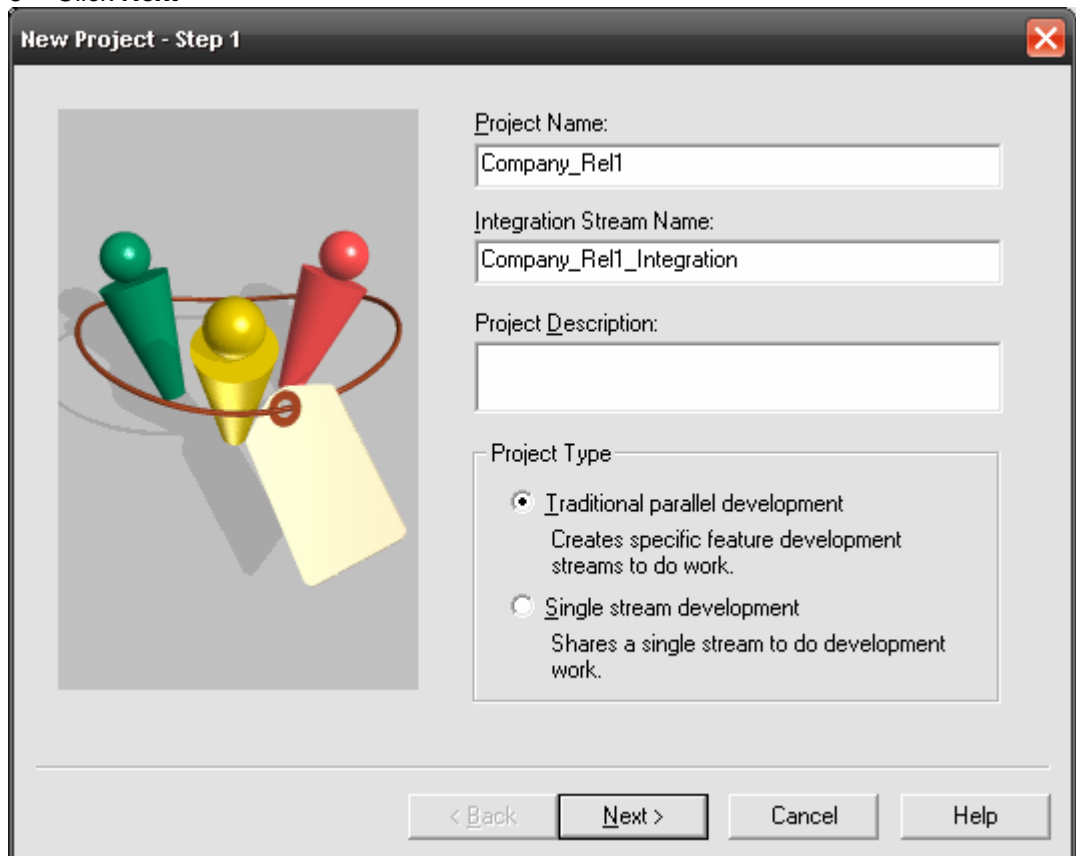
Once a project is created an Integration Stream must be created to begin development. Projects always include a single integration stream, which is the project main shared work area. In a multiple-stream project, many integration views can be attached to the project integration stream.

Creating a UCM Project from Windows GUI

1. Open the Project Explorer
 - Confirm that can see the Root Folder of the desired PVOB.
 - Right click on the Root Folder and click New > Project.



2. From the New Project wizard, enter the **Project Name**, **Integration Stream Name**, and optional **Project Description**
3. Select **Project Type**
 - o In this case, select **Traditional**
 - o Click **Next**



New Project - Step 1

Project Name:
Company_Rel1

Integration Stream Name:
Company_Rel1_Integration

Project Description:

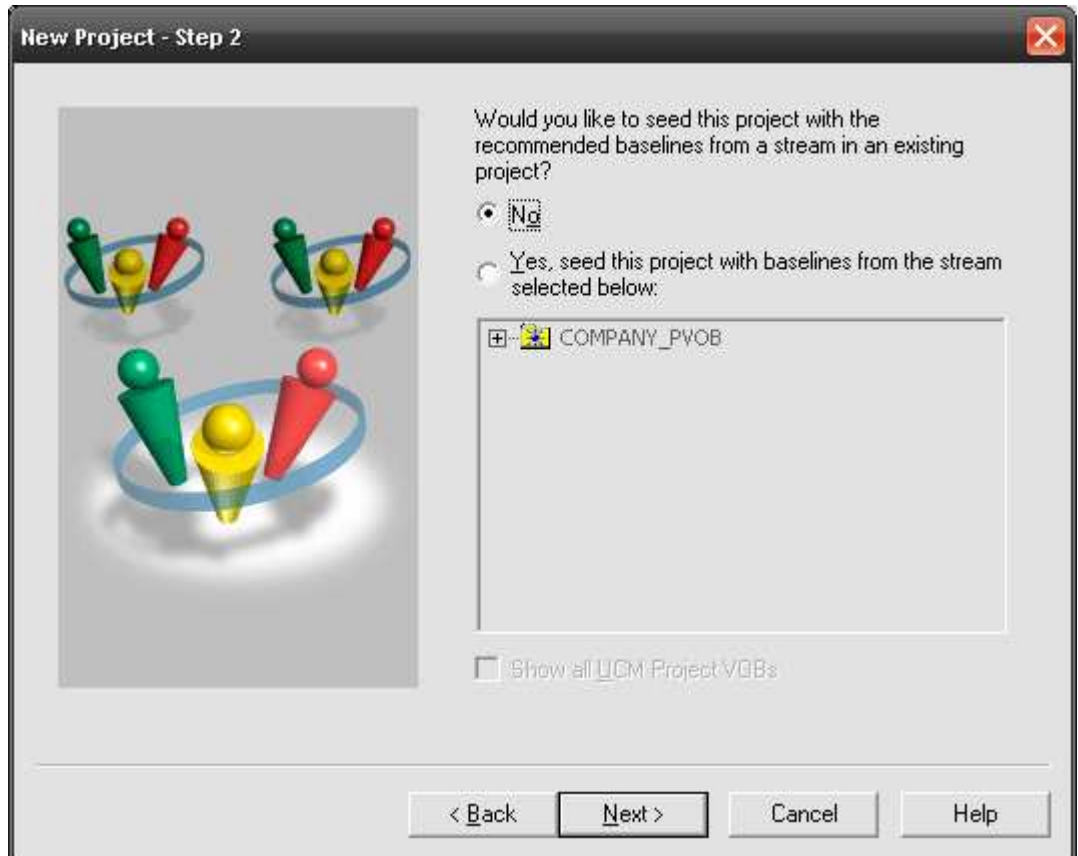
Project Type

- Traditional parallel development
Creates specific feature development streams to do work.
- Single stream development
Shares a single stream to do development work.

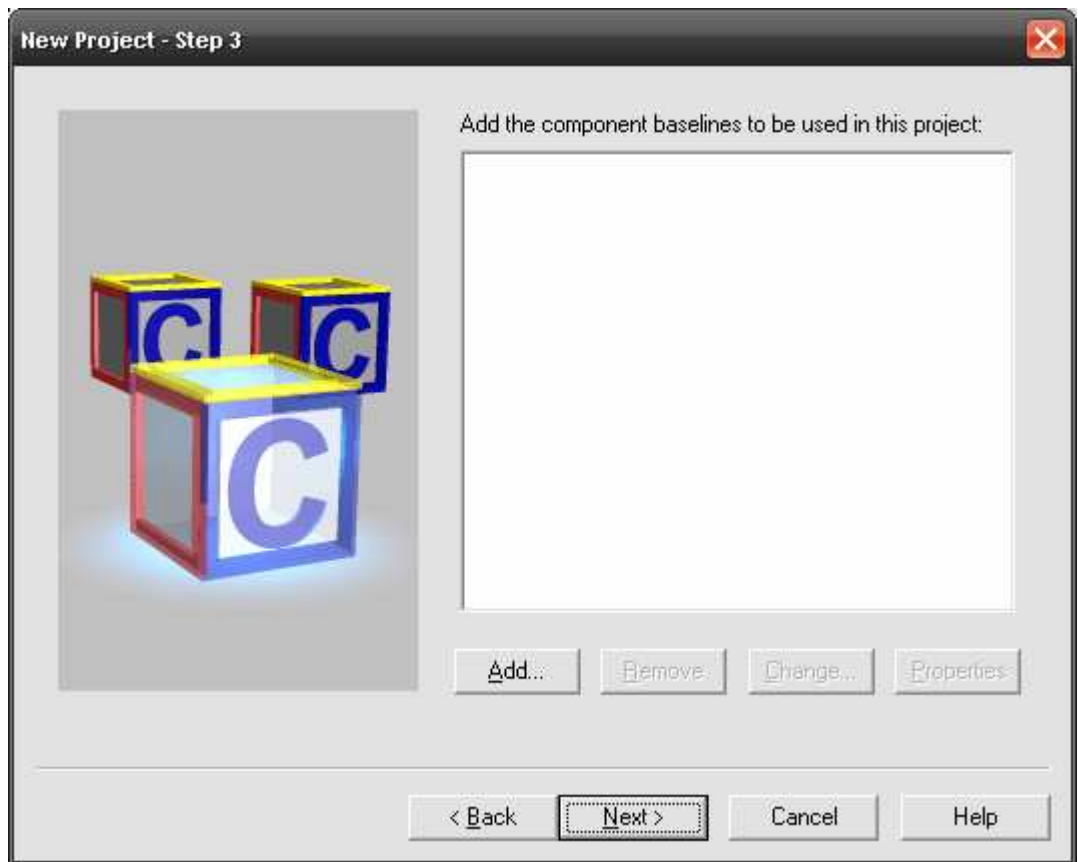
< Back Next > Cancel Help



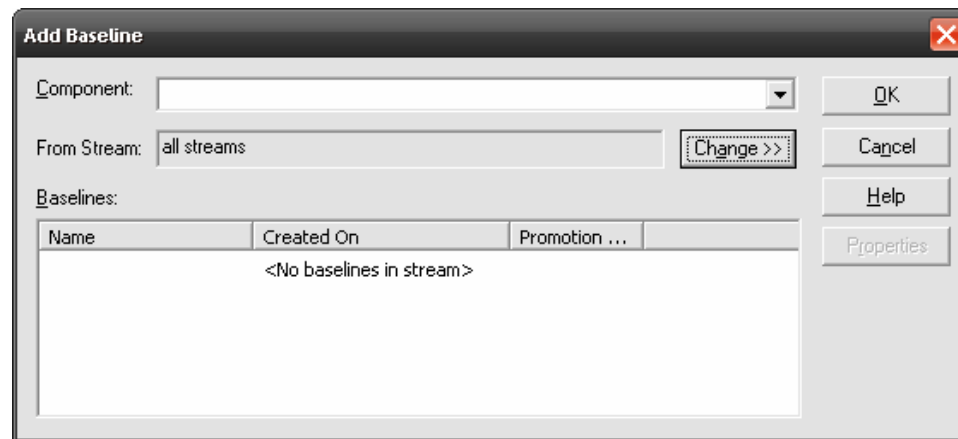
4. In Step 2, the wizard prompts you with the following question: **Would like to seed this project with the recommended baselines from a stream in an existing project?** This function will be useful when creating a new release of the same project type.
 - o In this case, when creating your first project select the default, **No**.



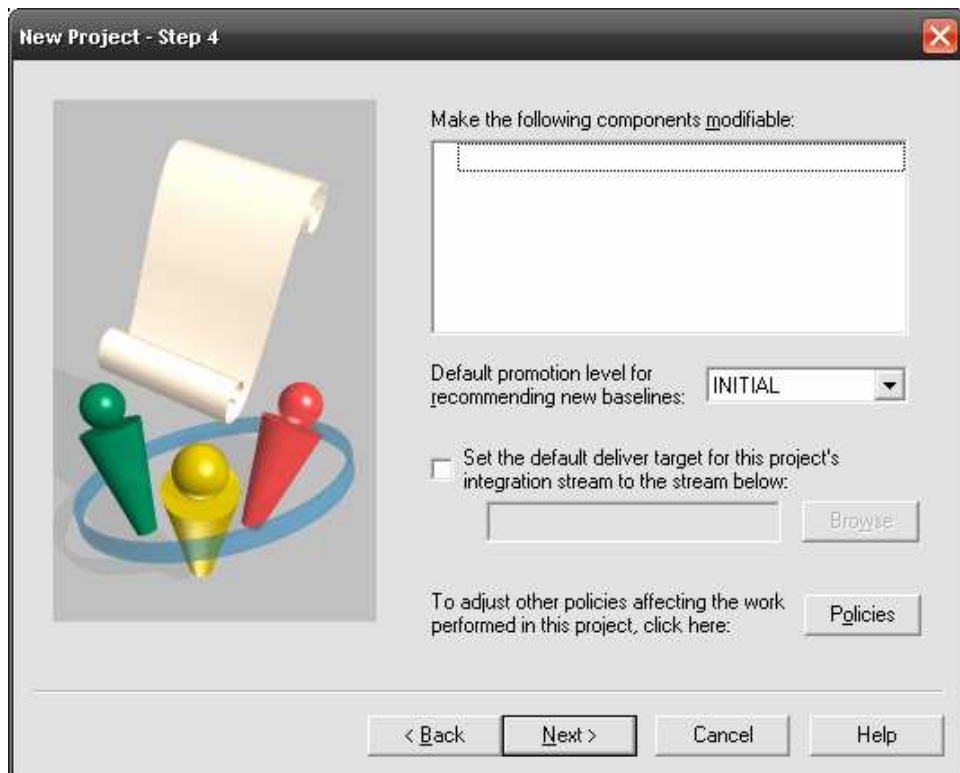
5. Next, you need to decide which components will be used in your new project. This is the point which the projects configuration is created. The configuration will be available when viewing the Projects Integration stream after creation.
 - Select **Add** to choose any available component baselines to configure the project with.



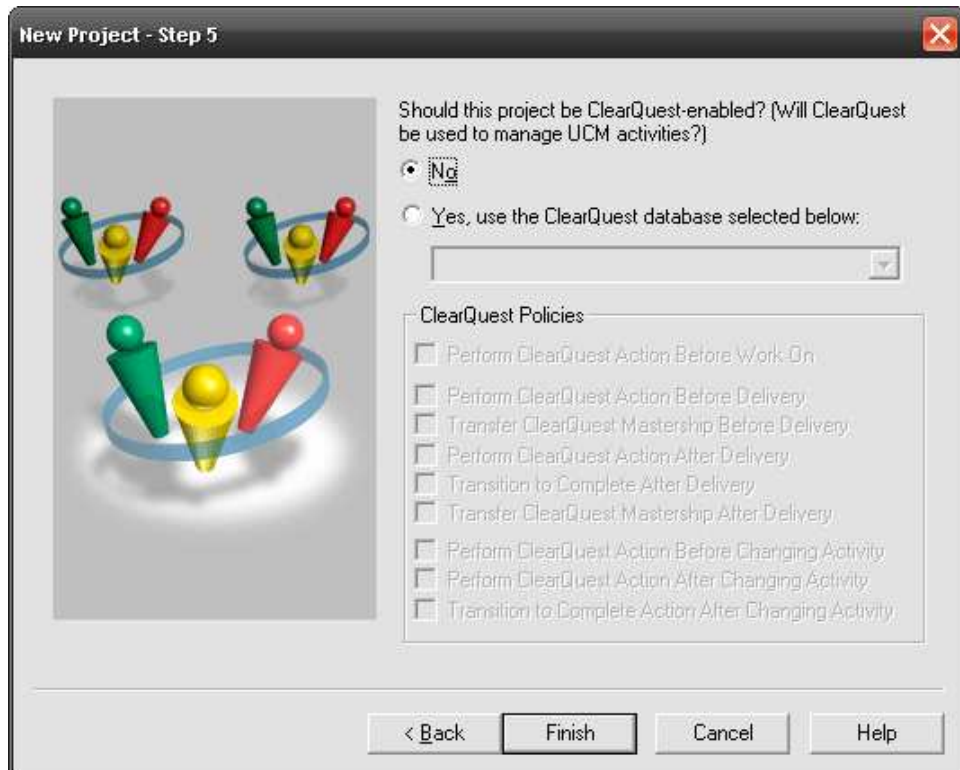
6. The following window appears. As you can see below, since we have not yet created any components, there are none available to the project.
 - o Click **OK** to close this window



7. Step 4 of the **New Project** wizard is where you decide which components will be made modifiable in the project. Once the component is made modifiable it is irreversible. **Note:** You can make a component modifiable after the project creation. If you have multiple Projects you can select a stream from an alternate project to be the default deliver target for this project.
 - o Since we don't have any components yet, click **Next**



8. In the last step of the New Project wizard, you have the option of ClearQuest-enabling the project. This is not a mandatory step; however, you can also ClearQuest-enable a UCM project after creation.
 - Click **Finish** to review the decisions made during the project creation wizard



Creating a UCM Project from the Command Line Interface

You can also create a UCM project from the command line interface. The following are a few commands you should familiarize yourself with.

1. Determine which pvoob the Project will exist in
2. Use the `cleartool mkproj -nc -in RootFolder project:COMPANY_REL1@PVOB_TAG` command

Example: `C:\customers>cleartool mkproj -nc -in RootFolder project:COMPANY_REL1@COMPANY_PVOB`

Result: Created project "COMPANY_REL1".

```
C:\customers>cleartool describe -l project:COMPANY_REL1@COMPANY_PVOB project
"COMPANY_REL1"
created 22-Jan-07.18:59:51 by William Frontiero (wfrontiero.clearcase@willpc)
owner: ASYLUM\wfrontiero
group: ASYLUM\clearcase
folder: RootFolder@COMPANY_PVOB
integration stream:
modifiable components:
default rebase promotion level: INITIAL
recommended baselines:
model: DEFAULT policies:
POLICY_UNIX_INT_SNAP disabled
POLICY_UNIX_DEV_SNAP disabled
POLICY_WIN_INT_SNAP disabled
POLICY_WIN_DEV_SNAP enabled
POLICY_DELIVER_REQUIRE_REBASE disabled
POLICY_DELIVER_NCO_DEVSTR disabled
POLICY_INTRAPROJECT_DELIVER_FOUNDATION_CHANGES disabled
POLICY_INTRAPROJECT_DELIVER_ALLOW_MISSING_TGTCOMPS disabled
POLICY_INTERPROJECT_DELIVER disabled
POLICY_INTERPROJECT_DELIVER_FOUNDATION_CHANGES disabled
POLICY_INTERPROJECT_DELIVER_REQUIRE_TGTCOMP_VISIBILITY disabled
POLICY_INTERPROJECT_DELIVER_ALLOW_NONMOD_TGTCOMPS disabled
POLICY_CHPROJECT_UNRESTRICTED disabled
POLICY_CHSTREAM_UNRESTRICTED disabled
baseline naming template: basename
```



3. You must now create an integration stream for the Project
 - a. Use the command: `Cleartool mkstream -integration -in project:Project_name@\pvob_tag -nc stream:Integration_stream_name@\pvob_tag`

Example: `C:\customers>ct mkstream -integration -in project:COMPANY_REL1@\COMPANY_PVOB -nc stream:COMPANY_INTEGRATION@\COMPANY_PVOB`
Created stream "COMPANY_INTEGRATION".

NOTE: The new *describe* displaying the integration stream name

```
project "COMPANY_REL1"
created 22-Jan-07.18:59:51 by William Frontiero (wfrontiero.clearcase@willpc)
owner: ASYLUM\wfrontiero
group: ASYLUM\clearcase
folder: RootFolder@\COMPANY_PVOB
integration stream: COMPANY_INTEGRATION@\COMPANY_PVOB
modifiable components:
default rebase promotion level: INITIAL
recommended baselines:
model: DEFAULT
policies:
POLICY_UNIX_INT_SNAP disabled
POLICY_UNIX_DEV_SNAP disabled
POLICY_WIN_INT_SNAP disabled
POLICY_WIN_DEV_SNAP enabled
POLICY_DELIVER_REQUIRE_REBASE disabled
POLICY_DELIVER_NCO_DEVSTR disabled
POLICY_INTRAPROJECT_DELIVER_FOUNDATION_CHANGES disabled
POLICY_INTRAPROJECT_DELIVER_ALLOW_MISSING_TGTCOMPS disabled
POLICY_INTERPROJECT_DELIVER disabled
POLICY_INTERPROJECT_DELIVER_FOUNDATION_CHANGES disabled
POLICY_INTERPROJECT_DELIVER_REQUIRE_TGTCOMP_VISIBILITY disabled
POLICY_INTERPROJECT_DELIVER_ALLOW_NONMOD_TGTCOMPS disabled
POLICY_CHPROJECT_UNRESTRICTED disabled
POLICY_CHSTREAM_UNRESTRICTED disabled
baseline naming template: basename
```



Trademarks, Copyrights and Disclaimers

The following terms are trademarks or registered trademarks of International Business Machines Corporation in the United States, other countries, or both:

IBM	CICS	IMS	MQSeries	Tivoli	
IBM (logo)	Cloudscape	Informix	OS/390	WebSphere	
e (logo) business	DB2	iSeries	OS/400	xSeries	
AIX	DB2 Universal Database	Lotus	pSeries	zSeries	

Java and all Java-based trademarks are trademarks of Sun Microsystems, Inc. in the United States, other countries, or both.

Microsoft, Windows, Windows NT, and the Windows logo are registered trademarks of Microsoft Corporation in the United States, other countries, or both.

Intel, ActionMedia, LANDesk, MMX, Pentium and ProShare are trademarks of Intel Corporation in the United States, other countries, or both.

UNIX is a registered trademark of The Open Group in the United States and other countries.

Linux is a registered trademark of Linus Torvalds.

Other company, product and service names may be trademarks or service marks of others.

Product data has been reviewed for accuracy as of the date of initial publication. Product data is subject to change without notice. This document could include technical inaccuracies or typographical errors. IBM may make improvements and/or changes in the product(s) and/or program(s) described herein at any time without notice. Any statements regarding IBM's future direction and intent are subject to change or withdrawal without notice, and represent goals and objectives only. References in this document to IBM products, programs, or services does not imply that IBM intends to make such products, programs or services available in all countries in which IBM operates or does business. Any reference to an IBM Program Product in this document is not intended to state or imply that only that program product may be used. Any functionally equivalent program, that does not infringe IBM's intellectual property rights, may be used instead.

Information is provided "AS IS" without warranty of any kind. THE INFORMATION PROVIDED IN THIS DOCUMENT IS DISTRIBUTED "AS IS" WITHOUT ANY WARRANTY, EITHER EXPRESS OR IMPLIED. IBM EXPRESSLY DISCLAIMS ANY WARRANTIES OF MERCHANTABILITY, FITNESS FOR A PARTICULAR PURPOSE OR NON-INFRINGEMENT. IBM shall have no responsibility to update this information. IBM products are warranted, if at all, according to the terms and conditions of the agreements (e.g., IBM Customer Agreement, Statement of Limited Warranty, International Program License Agreement, etc.) under which they are provided. Information concerning non-IBM products was obtained from the suppliers of those products, their published announcements or other publicly available sources. IBM has not tested those products in connection with this publication and cannot confirm the accuracy of performance, compatibility or any other claims related to non-IBM products. IBM makes no representations or warranties, express or implied, regarding non-IBM products and services.

The provision of the information contained herein is not intended to, and does not, grant any right or license under any IBM patents or copyrights. Inquiries regarding patent or copyright licenses should be made, in writing, to:

IBM Director of Licensing
IBM Corporation
North Castle Drive
Armonk, NY 10504-1785
U.S.A.

Performance is based on measurements and projections using standard IBM benchmarks in a controlled environment. All customer examples described are presented as illustrations of how those customers have used IBM products and the results they may have achieved. The actual throughput or performance that any user will experience will vary depending upon considerations such as the amount of multiprogramming in the user's job stream, the I/O configuration, the storage configuration, and the workload processed. Therefore, no assurance can be given that an individual user will achieve throughput or performance improvements equivalent to the ratios stated here.

© Copyright International Business Machines Corporation 2005, 2006, 2007. All rights reserved.

Note to U.S. Government Users - Documentation related to restricted rights-Use, duplication or disclosure is subject to restrictions set forth in GSA ADP Schedule Contract and IBM Corp.

