



IBM Education Assistant

**IBM Rational ClearCase™ (version 7.x)
Unified Change Management™**

Exercise 5: Special Project Creation
Mainline Projects and Bootstrap Projects

Rational. software



© Copyright International Business Machines Corporation 2005, 2006, 2007. All rights reserved. Note to U.S. Government Users Restricted Rights -- Use, duplication or disclosure restricted by GSA ADP. Schedule Contract with IBM Corp.

Contributors: Marcus Matic, Alex Grillakis, and Will Frontiero



Exercise 5: Special Project Creation

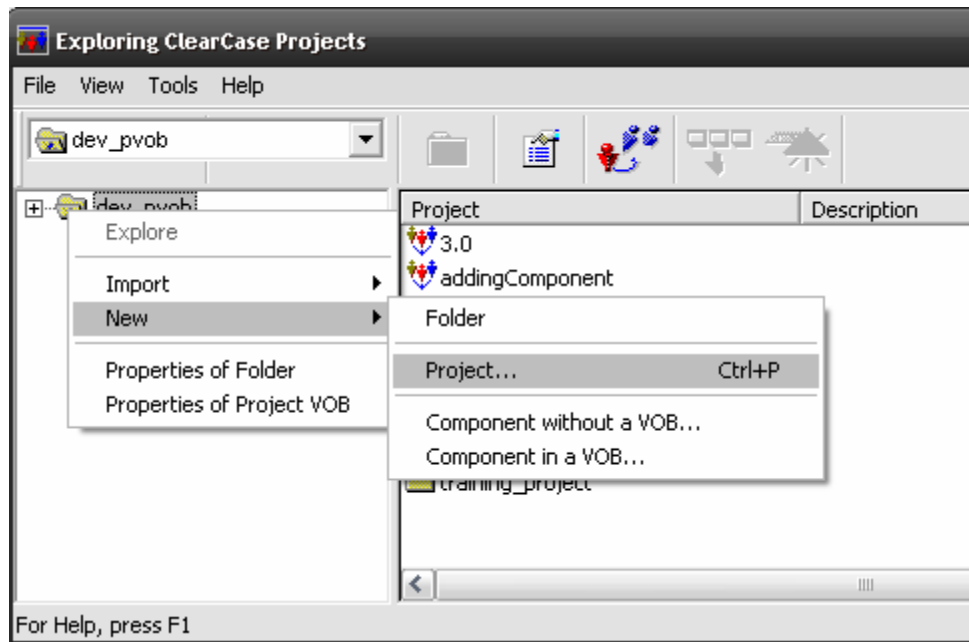
Mainline Projects and Bootstrap Projects

Mainline Project

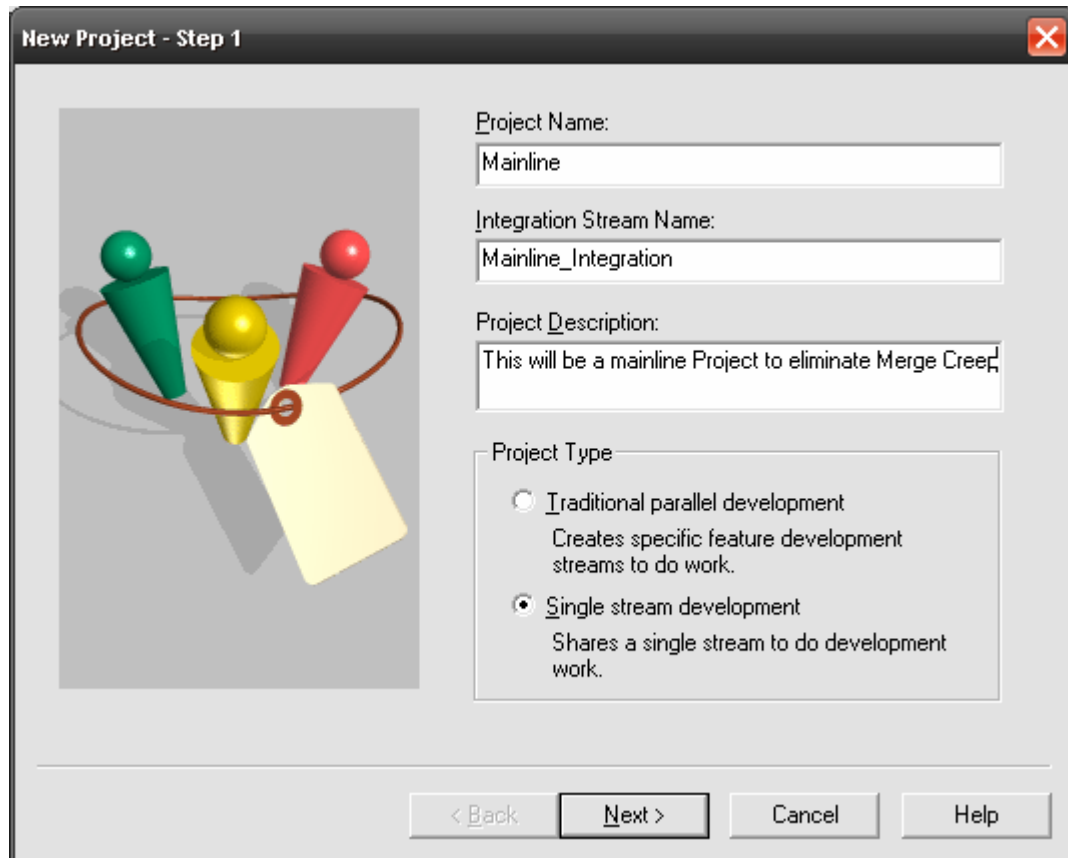
A Mainline Project is used to organize Project structures in a way of eliminating “Merge Creep”. Merge Creep is another term used to describe a cascading effect that creates excessively long version extended paths in UCM environments. Merge Creep can cause character limit issues resulting in the inability for ClearCase to checkout and merge elements.

Creating a Mainline Project

1. Start by creating a single stream project
 - o Right-click the appropriate folder
 - o Select **New | Project**



2. In **Step 1** of the **New Project** creation wizard, you will create a “Single Stream Project” called Mainline. Note that the GUI will create the integration stream called, “Mainline_Integration.”
 - o Enter the project name
 - o The integration stream name will be populated automatically
 - o Enter a project description
 - o Select a project type. In this case, select **Single stream development**
 - o Click **Next**



New Project - Step 1

Project Name:
Mainline

Integration Stream Name:
Mainline_Integration

Project Description:
This will be a mainline Project to eliminate Merge Cree

Project Type

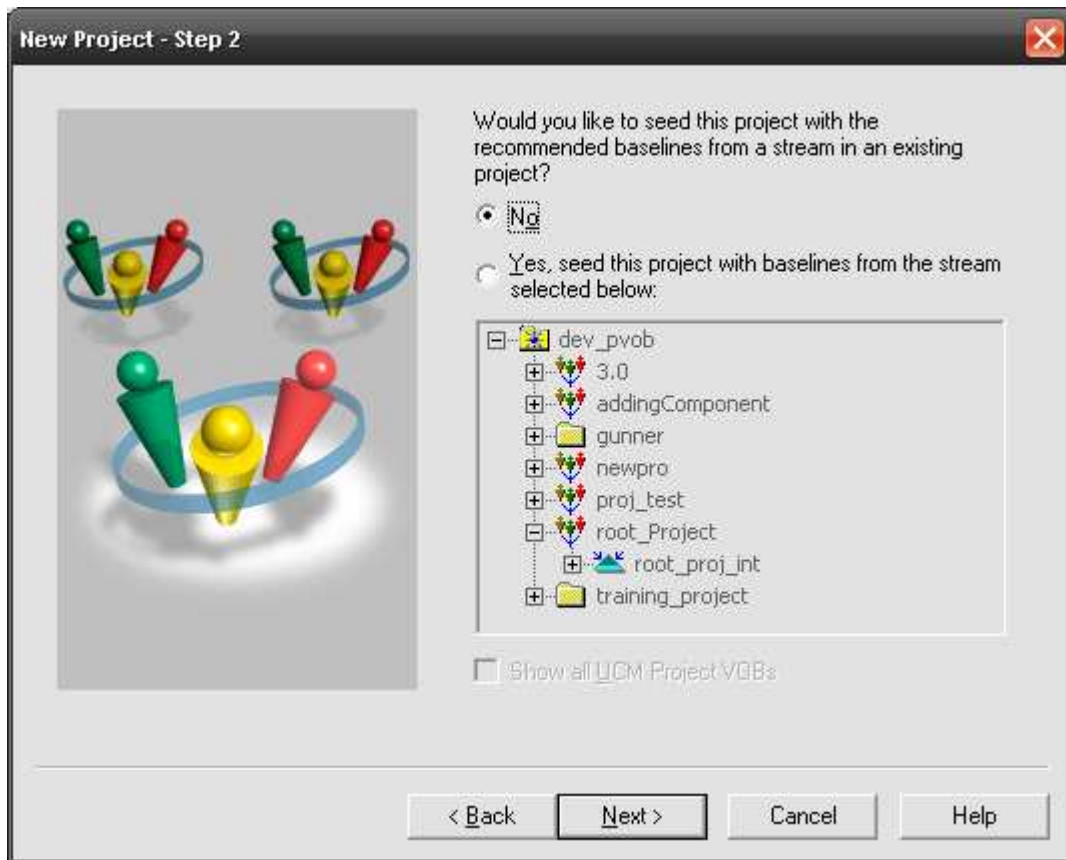
- Traditional parallel development
Creates specific feature development streams to do work.
- Single stream development
Shares a single stream to do development work.

< Back Next > Cancel Help

3. In **Step 2** of the **New Project** creation wizard, you will not seed the project from an existing project configuration



- o Select **No**
- o Click **Next**

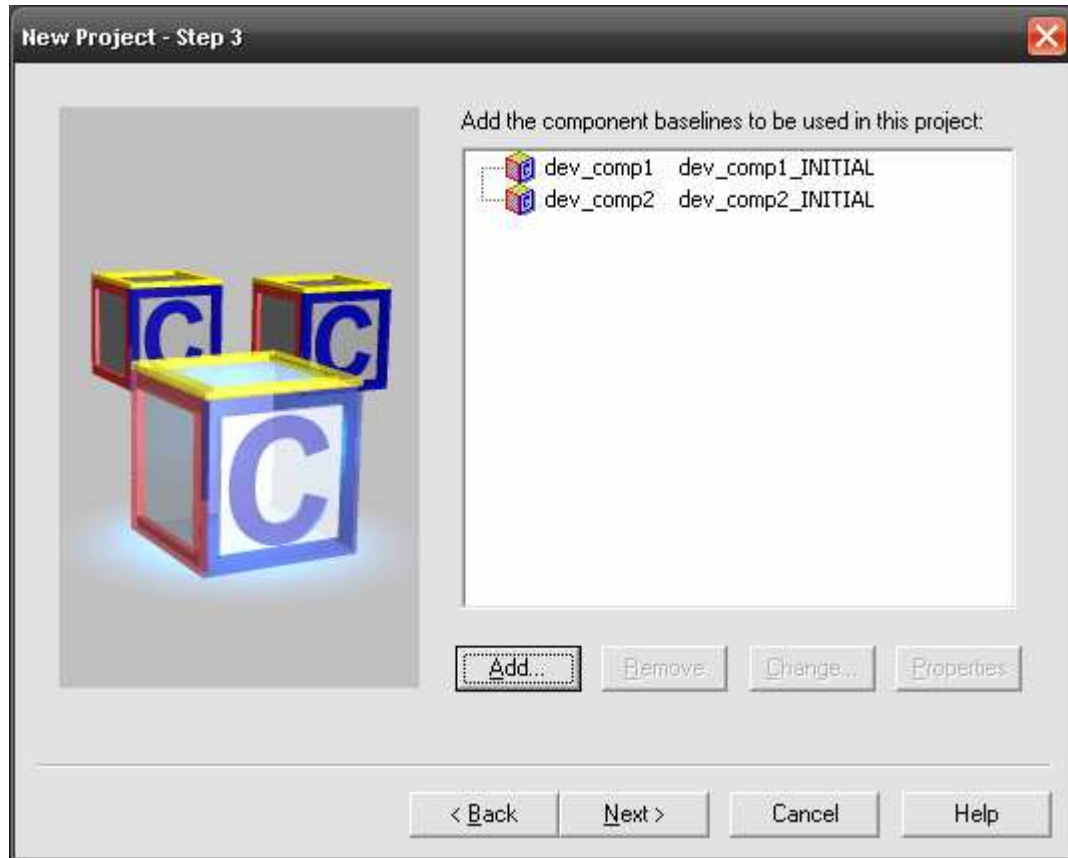


4. In **Step 3** of the **New Project** creation wizard, you will need to decide what components will be needed by projects in future releases. You will add these components at their Initial, or, desired baselines. Note: this type of project should be designed for the creation of your UCM environment as the Mainline Projects Integration Stream will be more flexible if it is seeded with the Initial baselines of the components being added.

- o Click **Add**

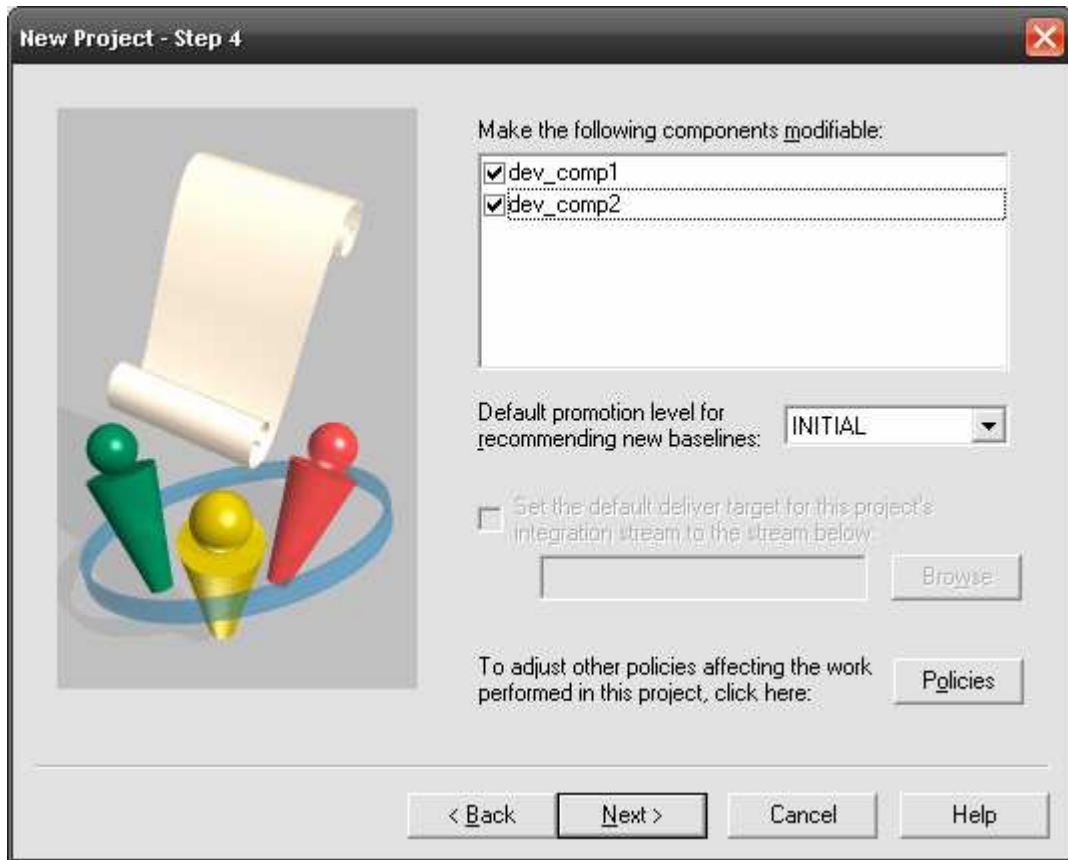


- Select initial baselines of the components being added
- Click **Next**



5. In **Step 4** of the **New Project** creation wizard, the components are usually set to *modifiable* in the next step. They are set to *modifiable* so other projects can deliver their future baselines to the Mainline. The *deliver* usually requires modification of elements within the components.
 - Check the components that you want to make modifiable
 - Click **Next**





Congratulations! You now have a mainline project that contains the starting baselines for components that will be used in the future projects of your UCM environment. You can now begin your first Project by seeding it from the mainline project.

Other future projects should also be seeded from the mainline project to eliminate the cascading effect. -- this ensures that all projects will all be seeded one level down from the Mainline and that inheritance will not cause character limit issues or excessively long names during UCM development.

Trademarks, Copyrights and Disclaimers

The following terms are trademarks or registered trademarks of International Business Machines Corporation in the United States, other countries, or both:

| | | | | | |
|-----------------|------------------------|----------|----------|-----------|--|
| IBM | CICS | IMS | MQSeries | Tivoli | |
| IBM (logo) | Cloudscape | Informix | OS/390 | WebSphere | |
| e(logo)business | DB2 | iSeries | OS/400 | xSeries | |
| AIX | DB2 Universal Database | Lotus | pSeries | zSeries | |

Java and all Java-based trademarks are trademarks of Sun Microsystems, Inc. in the United States, other countries, or both.

Microsoft, Windows, Windows NT, and the Windows logo are registered trademarks of Microsoft Corporation in the United States, other countries, or both.

Intel, ActionMedia, LANDesk, MMX, Pentium and ProShare are trademarks of Intel Corporation in the United States, other countries, or both.

UNIX is a registered trademark of The Open Group in the United States and other countries.



Linux is a registered trademark of Linus Torvalds.

Other company, product and service names may be trademarks or service marks of others.

Product data has been reviewed for accuracy as of the date of initial publication. Product data is subject to change without notice. This document could include technical inaccuracies or typographical errors. IBM may make improvements and/or changes in the product(s) and/or program(s) described herein at any time without notice. Any statements regarding IBM's future direction and intent are subject to change or withdrawal without notice, and represent goals and objectives only. References in this document to IBM products, programs, or services does not imply that IBM intends to make such products, programs or services available in all countries in which IBM operates or does business. Any reference to an IBM Program Product in this document is not intended to state or imply that only that program product may be used. Any functionally equivalent program, that does not infringe IBM's intellectual property rights, may be used instead.

Information is provided "AS IS" without warranty of any kind. THE INFORMATION PROVIDED IN THIS DOCUMENT IS DISTRIBUTED "AS IS" WITHOUT ANY WARRANTY, EITHER EXPRESS OR IMPLIED. IBM EXPRESSLY DISCLAIMS ANY WARRANTIES OF MERCHANTABILITY, FITNESS FOR A PARTICULAR PURPOSE OR NONINFRINGEMENT. IBM shall have no responsibility to update this information. IBM products are warranted, if at all, according to the terms and conditions of the agreements (e.g., IBM Customer Agreement, Statement of Limited Warranty, International Program License Agreement, etc.) under which they are provided. Information concerning non-IBM products was obtained from the suppliers of those products, their published announcements or other publicly available sources. IBM has not tested those products in connection with this publication and cannot confirm the accuracy of performance, compatibility or any other claims related to non-IBM products. IBM makes no representations or warranties, express or implied, regarding non-IBM products and services.

The provision of the information contained herein is not intended to, and does not, grant any right or license under any IBM patents or copyrights. Inquiries regarding patent or copyright licenses should be made, in writing, to:

IBM Director of Licensing
IBM Corporation
North Castle Drive
Armonk, NY 10504-1785
U.S.A.

Performance is based on measurements and projections using standard IBM benchmarks in a controlled environment. All customer examples described are presented as illustrations of how those customers have used IBM products and the results they may have achieved. The actual throughput or performance that any user will experience will vary depending upon considerations such as the amount of multiprogramming in the user's job stream, the I/O configuration, the storage configuration, and the workload processed. Therefore, no assurance can be given that an individual user will achieve throughput or performance improvements equivalent to the ratios stated here.

© Copyright International Business Machines Corporation 2005, 2006, 2007. All rights reserved.

Note to U.S. Government Users - Documentation related to restricted rights-Use, duplication or disclosure is subject to restrictions set forth in GSA ADP Schedule Contract and IBM Corp.

