

Speaker Notes



IBM Software Group | Rational software

IBM® Rational® ClearQuest®

Exporting records from ClearQuest

Rational software

@business on demand.

© 2007 IBM Corporation
Updated October 23, 2007

The slide features a blue background with a circular pattern of dots. The IBM logo is in the top right corner. The text 'IBM Software Group | Rational software' is in the top left. The main title 'IBM® Rational® ClearQuest®' and subtitle 'Exporting records from ClearQuest' are centered. The Rational software logo is below the subtitle. A horizontal bar with various icons is below the Rational logo. The '@business on demand.' logo is in the bottom right. Copyright and update information are at the very bottom right.

This presentation will cover exporting records from IBM Rational ClearQuest.

Speaker Notes

IBM Software Group | Rational software

Module objectives

This introduction helps the students put the material into context.

- ▶ Exporting records

Make sure the students understand that this is not an architecture course!

- ▶ Upon completion of this section, you will be able to:
 - ▶ Understand how to export records
 - ▶ Understand that you need to export all related records

2


Module 2: Exporting records from ClearQuest

© 2007 IBM Corporation

IBM Rational ClearQuest offers customers the tools to export data from ClearQuest databases so that the data can be used by other applications or by other ClearQuest databases. This module assumes that you are familiar with schema design and you are using ClearQuest 7.0 or greater. Note: In earlier ClearQuest versions, there was a ClearQuest export tool but in ClearQuest 7.0, this functionality is built into the ClearQuest client.




If you are exporting data to another ClearQuest database, you can choose the ClearQuest import format and correctly formatted files will be created. If you are exporting to another data source, you have other options for formatting as discussed in the following slides.

Speaker Notes

IBM Software Group | Rational software 

Export related records

- Export all ClearQuest records that will be needed
 - ▶ If you have *record1* with a reference to *record2* and *record2* has a reference to *record3*, export all of these records. The order of the export of the records is not important.
- If you are exporting records that will be exported into a ClearQuest database related to a different schema repository and your records contain references to users
 - ▶ Use the export functionality in User Administration to export users (Utilities > Export) before importing the primary records
 - ▶ Export users using the export record functionality in the ClearQuest client
 - ▶ Note: You can only import users through User Administration import functionality
- If you are exporting users for another application's use, use the export functionality in the ClearQuest client.

3   Module 2: Exporting records from ClearQuest  3

When exporting records from ClearQuest, it is important to be very familiar with the schema. Start with your primary records and make a list of the records that are referenced in either the “reference” or “reference_list” fields. Follow down through all the referenced records to see if they reference other record types.

You also need to check-in any choice list hooks to see if the list is being created from another record type and add those record types to your list. You then need to go through that list of referenced record types to determine if they in turn reference any other record types and add those new record types to the list.

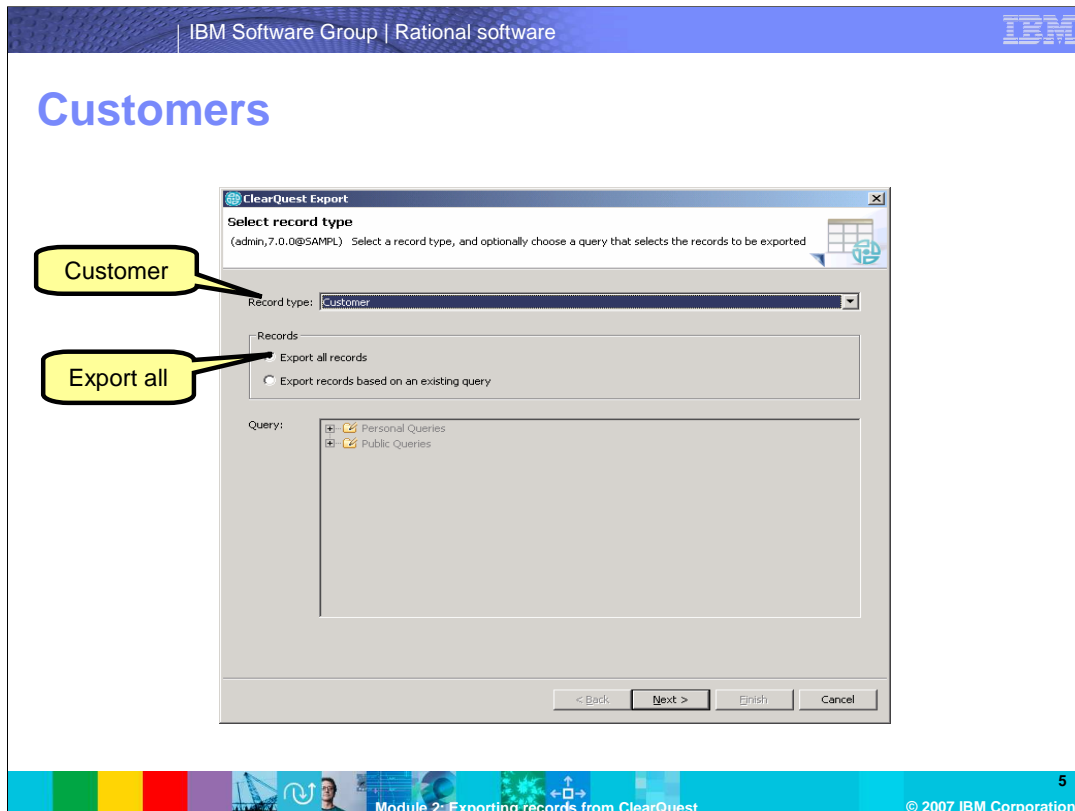
If you are exporting records that will be imported into a ClearQuest database related to a different schema repository and your records contain references to users, make sure you use the export functionality in User Administration to export the users (Utilities > Export) before importing the primary records. You can export users using the export record functionality in the ClearQuest client but you can only import users into a ClearQuest database through the user administration import functionality.

EXAMPLE: ClearQuest export

- Export a ClearQuest sample database based on the DefectTracking schema for the export



The following slides will walk you through exporting in IBM Rational ClearQuest. This example exports records from a ClearQuest sample database based on the DefectTracking schema. Note: The following example will show the export of a stateless record, but state-based records are also exported in the same way.

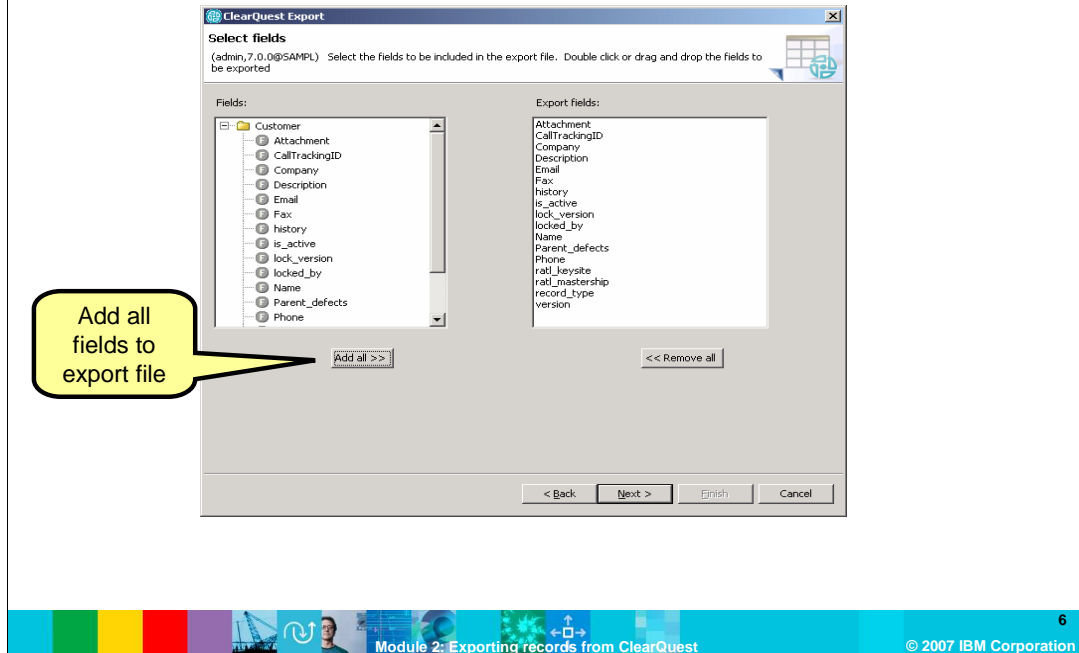


On this first step of the export tool, select the information regarding the data you will be exporting, including record type, queries, and so on.

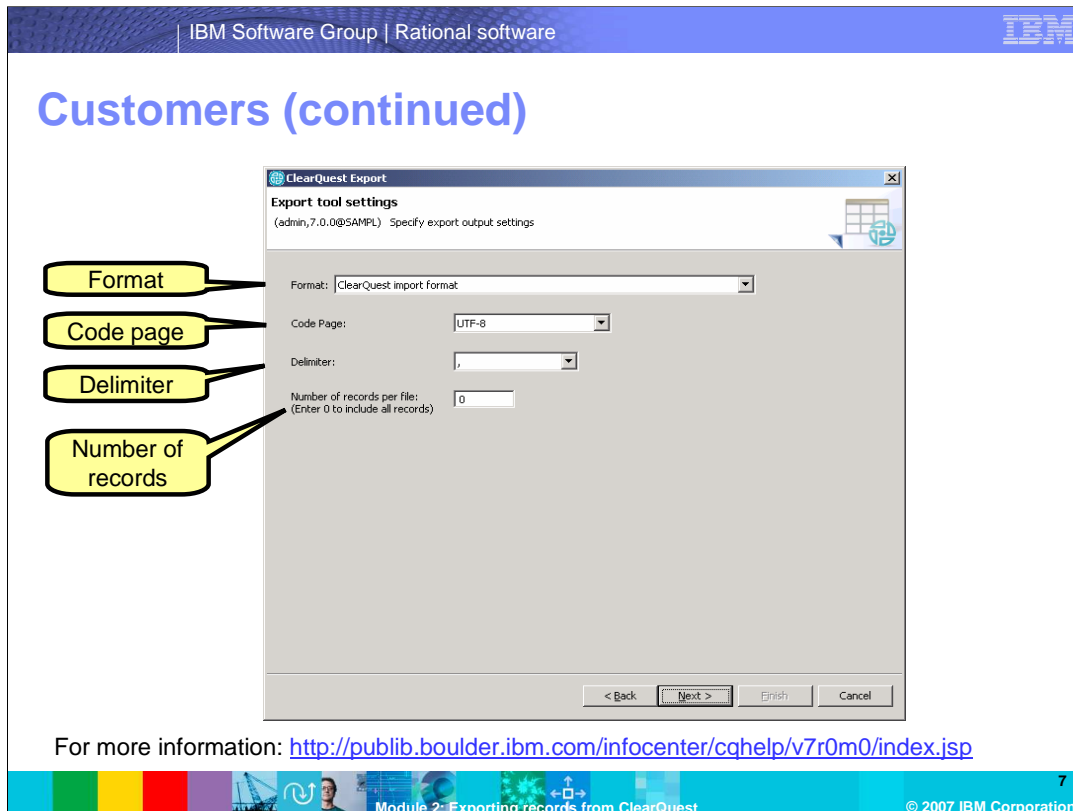
To start the wizard, select **File > Export > Records** to export Customer records. Then select *Customer* as the record type. Finally, select either “Export all records” to export all records or “Export records based on an existing query” to export only a limited set of records. In this screen capture, the “export all records” option has been selected.

When finished, click Next.

Customers (continued)



On this second step of the export tool, select the fields to be included in the export file. Click "Add All". Note that you can either select "Add all" or double-click specific fields to add to the file. Click Next.



On the third step of the export tool, specify export output settings.

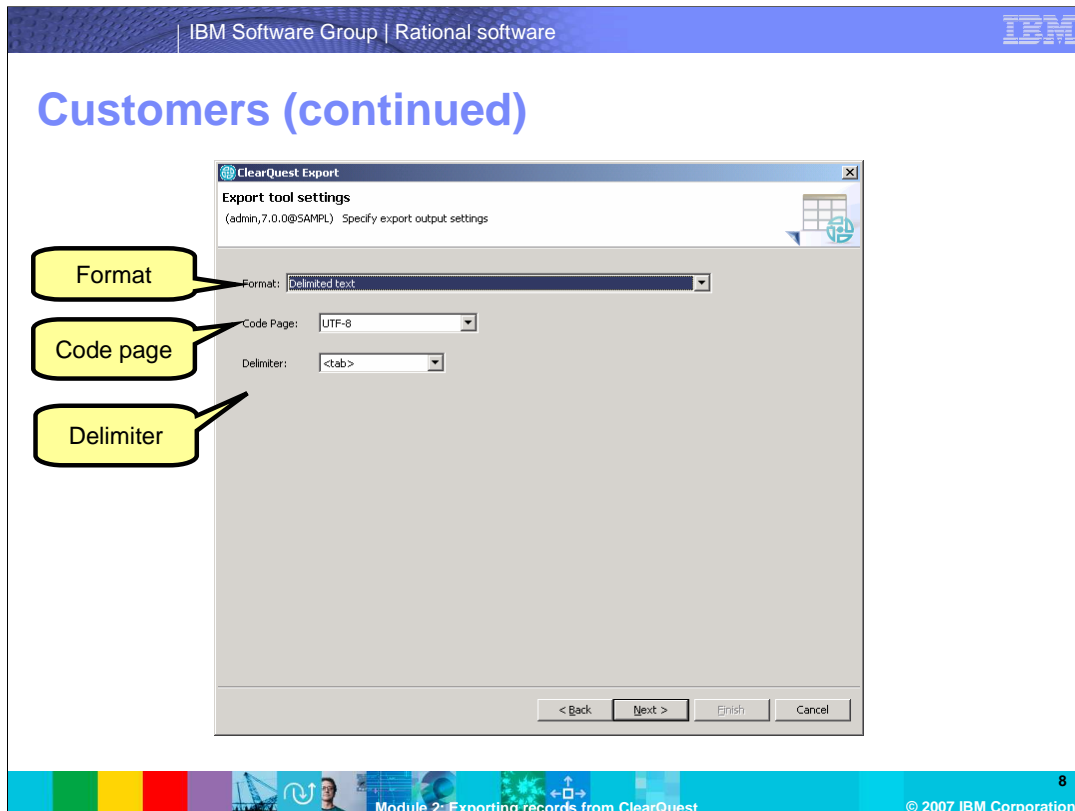
Choose the format for the export file. Your choices are: ClearQuest import format, Delimited text, or XML. If you choose ClearQuest import format, you will be asked to select the code page for the export file, the delimiter and the number of records per file.

Then select the code page type. The code page is the character set for the file. More information about this can be found in ClearQuest help in the ClearQuest client. Information can also be found in the ClearQuest information center located at the Web address shown here. In this example, UTF-8 has been selected.

Choose the delimiter type. The delimiter can be comma, semi-colon, colon, pipe or tab. This example, uses the comma as the delimiter.

Select the number of records per file. If the number of records per file specified is zero, all records will be included.

Click Next.



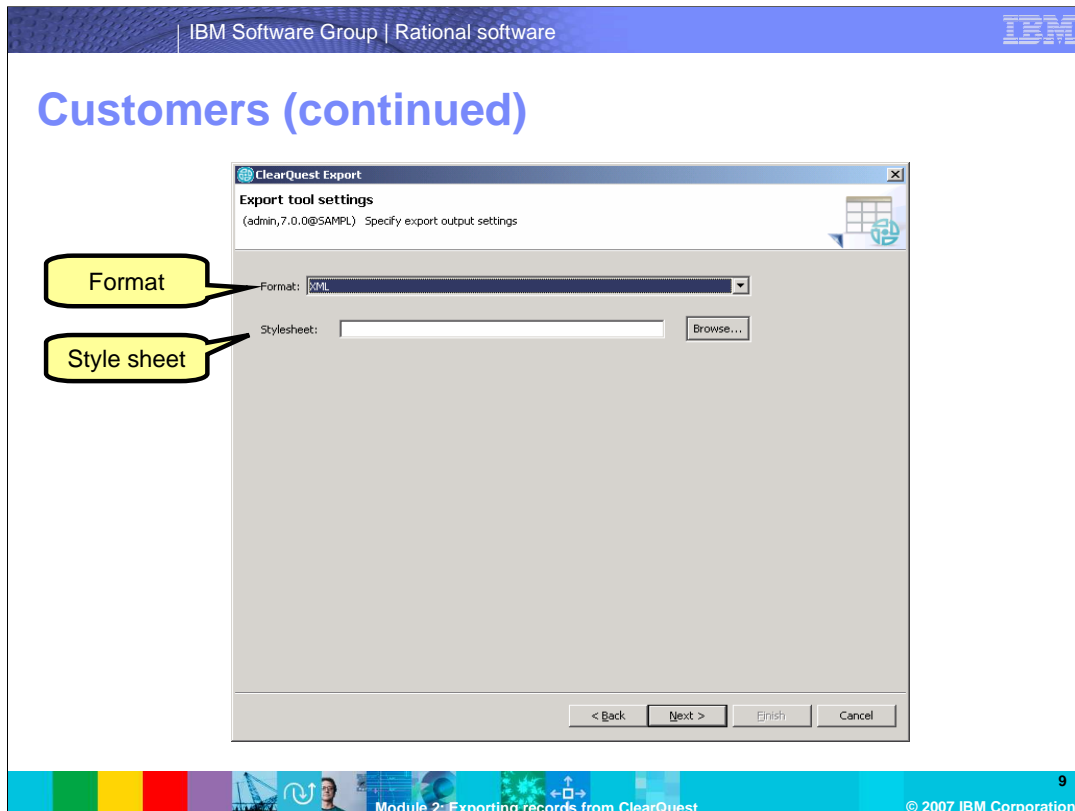
If you choose *delimited text* for the format, you can choose the code page and a delimiter. On the this third step of the export tool, specify export output settings.

Choose the format for the export file. This example uses the delimited text option.

Select the code page type. This example uses UTF-8.

Choose the delimiter type. This example uses the tab as the delimiter.

Click Next.

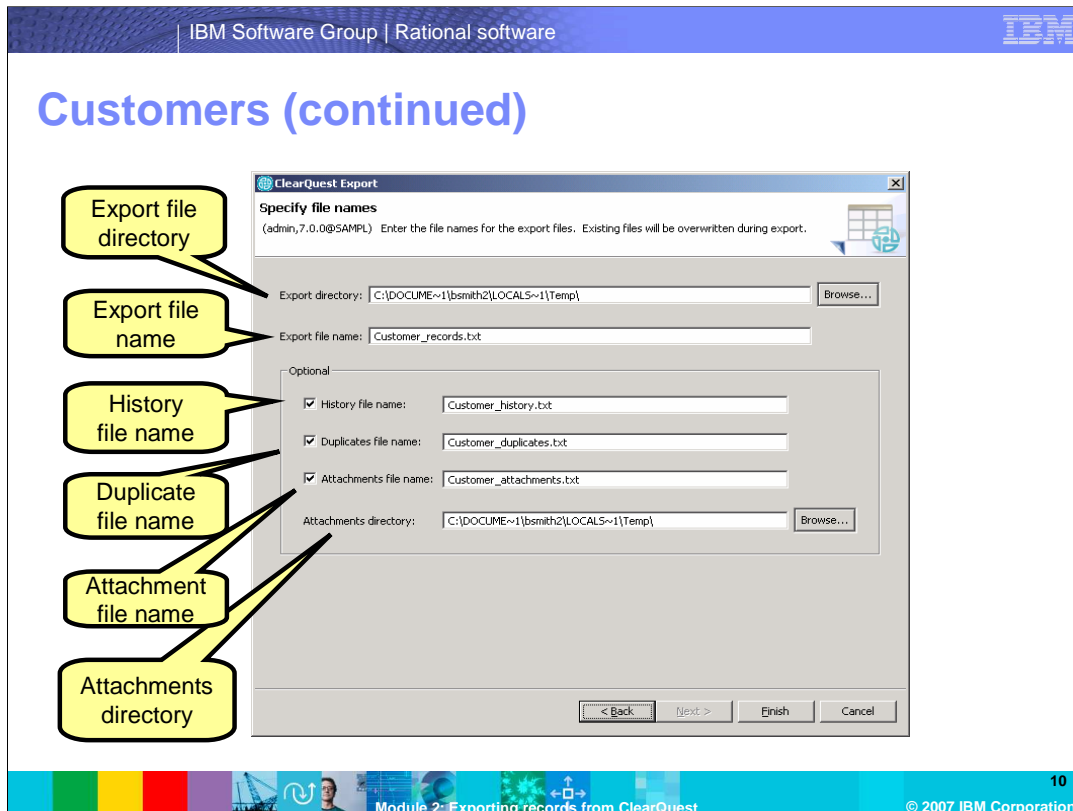


If you chose *XML* as the format, you will need to specify the style sheet on this third step of the export tool.

Choose the format for the export file. This example uses the XML format option.

Select the appropriate style sheet using the Browse button

Click Next.



On this final step of the export tool, specify the file names for the export files. This window pertains to the “ClearQuest import format” from step 3.

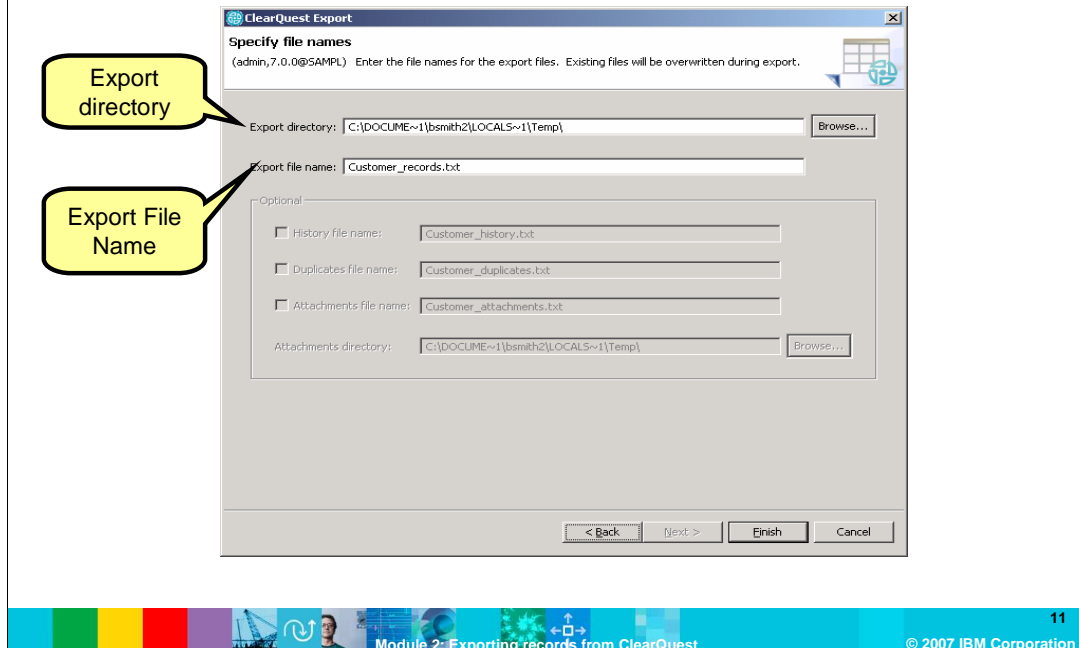
Specify the export file directory

Specify the export file name for the records. Ensure you use distinctive names to differentiate from the record files, history, and so on.

Specify all of the optional file names for exporting the related history, duplicates, and attachment file names and the associated directories. Most users only export the records for stateless records but the option is available if you need these files.

Once you have finished, click Finish to create your export files.

Customers (continued)



If you had picked the Delimited text or XML format, you would only have the option of specifying the export directory and the export file name. The other files would be unavailable.

Select the export directory and the export file name

Once complete, click Finish to create the export files.

Summary

- Order of export for records is not important
- Need to export all related records
- Stateless and state-based records are exported in the same way
- Choose the format for the export file based on how it will be imported

For additional help:

<http://publib.boulder.ibm.com/infocenter/cqhelp/v7r0m0/index.jsp>



In summary, exporting from ClearQuest is much simpler than importing, because you do not need to worry about the order in which you export records, you can choose to export all related records or select just the ones you need, both stateless and state-based records are exported in the same way, and you have many options for the format, delimiter types, character codes, and so on for the export files you want to create.

To learn more about this topic or other IBM Rational products, visit www.ibm.com/rational. Additional information on IBM Rational ClearQuest can be located in the ClearQuest information center page shown here.

Feedback

Your feedback is valuable

You can help improve the quality of IBM Education Assistant content to better meet your needs by providing feedback.

- Did you find this module useful?
- Did it help you solve a problem or answer a question?
- Do you have suggestions for improvements?

Click to send e-mail feedback:

mailto:iea@us.ibm.com?subject=Feedback_about_RCQ_Module2_Exporting.ppt



You can help improve the quality of IBM Education Assistant content by providing feedback.

Trademarks, copyrights, and disclaimers

The following terms are trademarks or registered trademarks of International Business Machines Corporation in the United States, other countries, or both:

ClearQuest IBM Rational

Rational is a trademark of International Business Machines Corporation and Rational Software Corporation in the United States, Other Countries, or both.

Product data has been reviewed for accuracy as of the date of initial publication. Product data is subject to change without notice. This document could include technical inaccuracies or typographical errors. IBM may make improvements or changes in the products or programs described herein at any time without notice. Any statements regarding IBM's future direction and intent are subject to change or withdrawal without notice, and represent goals and objectives only. References in this document to IBM products, programs, or services does not imply that IBM intends to make such products, programs or services available in all countries in which IBM operates or does business. Any reference to an IBM Program Product in this document is not intended to state or imply that only that program product may be used. Any functionally equivalent program, that does not infringe IBM's intellectual property rights, may be used instead.

Information is provided "AS IS" without warranty of any kind. THE INFORMATION PROVIDED IN THIS DOCUMENT IS DISTRIBUTED "AS IS" WITHOUT ANY WARRANTY, EITHER EXPRESS OR IMPLIED. IBM EXPRESSLY DISCLAIMS ANY WARRANTIES OF MERCHANTABILITY, FITNESS FOR A PARTICULAR PURPOSE OR NON-INFRINGEMENT. IBM shall have no responsibility to update this information. IBM products are warranted, if at all, according to the terms and conditions of the agreements (for example, IBM Customer Agreement, Statement of Limited Warranty, International Program License Agreement, etc.) under which they are provided. Information concerning non-IBM products was obtained from the suppliers of those products, their published announcements or other publicly available sources. IBM has not tested those products in connection with this publication and cannot confirm the accuracy of performance, compatibility or any other claims related to non-IBM products.

IBM makes no representations or warranties, express or implied, regarding non-IBM products and services.

The provision of the information contained herein is not intended to, and does not, grant any right or license under any IBM patents or copyrights. Inquiries regarding patent or copyright licenses should be made, in writing, to:

IBM Director of Licensing
IBM Corporation
North Castle Drive
Armonk, NY 10504-1785
U.S.A.

Performance is based on measurements and projections using standard IBM benchmarks in a controlled environment. All customer examples described are presented as illustrations of how those customers have used IBM products and the results they may have achieved. The actual throughput or performance that any user will experience will vary depending upon considerations such as the amount of multiprogramming in the user's job stream, the I/O configuration, the storage configuration, and the workload processed. Therefore, no assurance can be given that an individual user will achieve throughput or performance improvements equivalent to the ratios stated here.

© Copyright International Business Machines Corporation 2007. All rights reserved.

Note to U.S. Government Users - Documentation related to restricted rights-Use, duplication or disclosure is subject to restrictions set forth in GSA ADP Schedule Contract and IBM Corp.

