
IBM Tivoli Endpoint Manager V8.2

Manually adding new software titles to the software usage analysis catalog



This document provides steps to manually add software titles that were not automatically detected into the Tivoli® Endpoint Manager V8.2 Software Usage Analysis catalog.

Objectives

When you have completed this training module, you can accomplish these tasks:

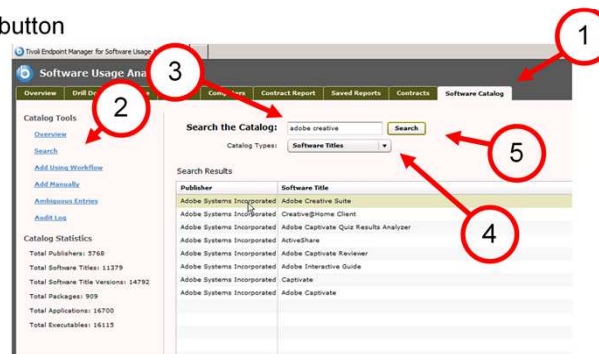
- Search for software titles to see that they are already present within an IBM Tivoli Endpoint Manager V8.2 software catalog
- Add new software titles to the IBM Tivoli Endpoint Manager V8.2 software catalog
- Add new packages and applications to a software title listed in the IBM Tivoli Endpoint Manager V8.2 software catalog

After completing this training module, you can search for a software application by its title to see if it exists within the IBM Tivoli Endpoint Manager V8.2 software catalog. If the software application does not previously exist, then you can add that title to the catalog.

Searching the software catalog for existing software titles

Log in to the Software Usage Analysis (SUA) web interface and accomplish these tasks:

1. Click the **Software Catalog** tab
2. Click the **Search** link
3. Enter a software application name into the **Search the Catalog:** text box
4. Set the **Catalog Types:** menu option to **Software Titles**
5. Click the **Search** button



3

Manually adding new software titles to the software usage analysis catalog

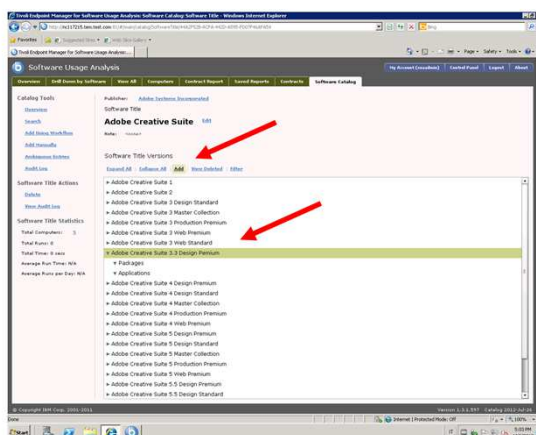
© 2013 IBM Corporation

Software Usage Analysis (SUA) counts and displays the usage of every specific software application by network user. Usage discovery of each different software application is accomplished automatically. If a software application is not contained in the software catalog, it cannot be counted. Such software titles are added manually. Before manually adding a software application to the catalog, you must verify that it is not already in the software catalog. This is accomplished by searching existing software titles already contained in the Software Usage Analysis catalog. Here is an example demonstrating how to search the Software Usage Analysis catalog. You are searching for Adobe Creative Suite 3.3 Premium. Log in to the SUA web interface. Next, click the **Software Catalog** tab. Now click the **Search** link located in the left column. In this example, the user searching the catalog finds that the title Adobe Creative Suite 3.3 Premium is not listed. Enter Adobe Creative in the **Search the Catalog** text box. Set the **Catalog Type** menu option to **Software Titles**, and click **Search**. Here the user did not find Adobe Creative Suite 3.3 Premium within the list of existing software types. Adobe Creative Suite 3.3 Premium must be manually added to the software catalog.

Adding a new software title to the software catalog

Perform these steps to begin manually adding a new software title to the software catalog:

1. Locate and highlight the software title
2. Click the **Add** button



4

Manually adding new software titles to the software usage analysis catalog

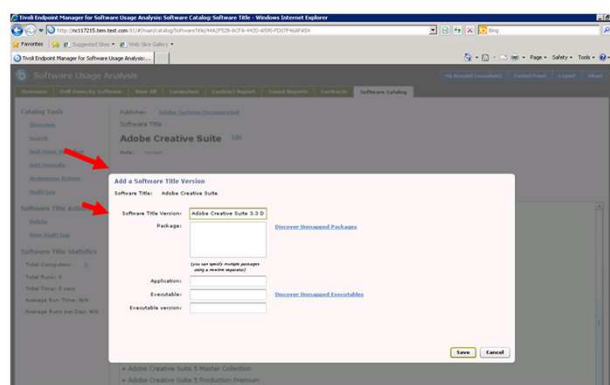
© 2013 IBM Corporation

Now add the currently non-existing software title to the software catalog. In this example, you want to manually add Adobe Creative Suite 3.3 Design Premium to the software catalog. Stay on the screen located under the **Software Catalog** tab. Since Adobe Creative was the search string, the available software types with that string in the title are shown here. Adobe Creative Suite 3.3 Design Premium is listed in the search results. Remember the task that you need to accomplish is to manually add Adobe Creative Suite 3.3 Design Premium to the software catalog. Highlight Adobe Creative Suite 3.3 Design Premium. Click the **Add** button located under **Software Title Versions**. A software title and version named **Adobe Creative Suite 3.3 Design Premium** is about to be manually added to the software catalog.

Checking and saving the software title (1 of 2)

Perform these steps to check the software title and save it to the software catalog:

1. Check the text that is contained in the **Software Title Version:** text box
2. Verify that the text box contains the correct software title and version
3. Click the **Save** button



5

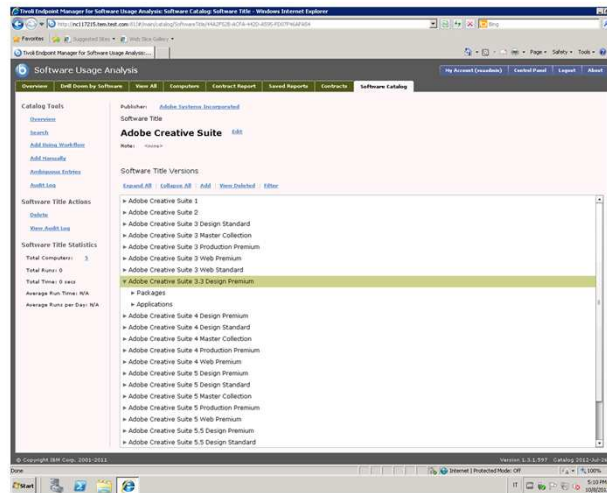
Manually adding new software titles to the software usage analysis catalog

© 2013 IBM Corporation

The **Add a Software Title Version** screen opens. Click the **Software Title Version:** text box that contains the Adobe Creative Suite 3.3 Design Premium entry. Not all of the software title is shown in this text box. Scroll forward in the text box to ensure the text box has the correct software title. Click the **Save** button once you verify that this is the correct software title.

Checking and saving the software title (2 of 2)

The Add a Software Title Version window closes



6

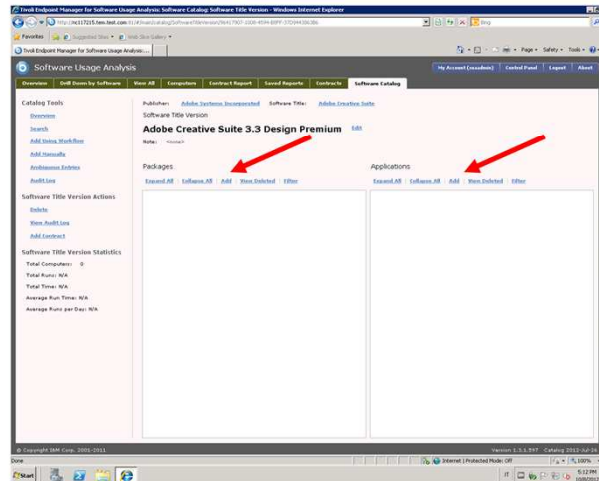
Manually adding new software titles to the software usage analysis catalog

© 2013 IBM Corporation

The **Add a Software Title Version** window immediately closes after a successful save of the new software title.

Checking software title mapping to packages and applications

At this stage the software title is not mapped to any packages or applications



7

Manually adding new software titles to the software usage analysis catalog

© 2013 IBM Corporation

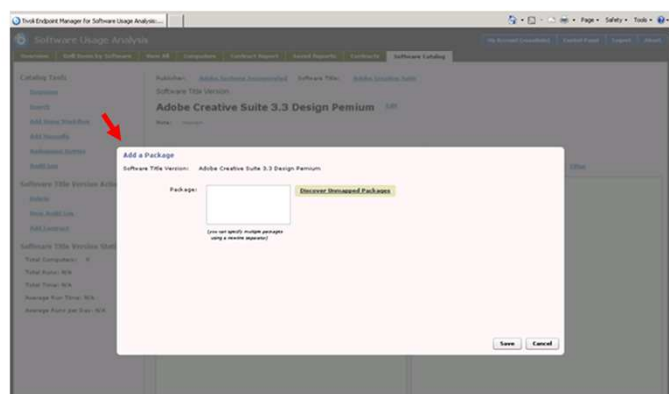
Look at the current slide. Adobe Creative Suite 3.3 Design Premium is not mapped to any packages. It is also not mapped to any applications.

You map both packages and applications to the software title by clicking on their **Add** buttons.

Adding a package to a software title

IBM Tivoli Endpoint Manager V8.2 provides these options for adding packages to software titles:

- Discovering and choosing from currently available unmapped packages
- Specifying a custom package



8

Manually adding new software titles to the software usage analysis catalog

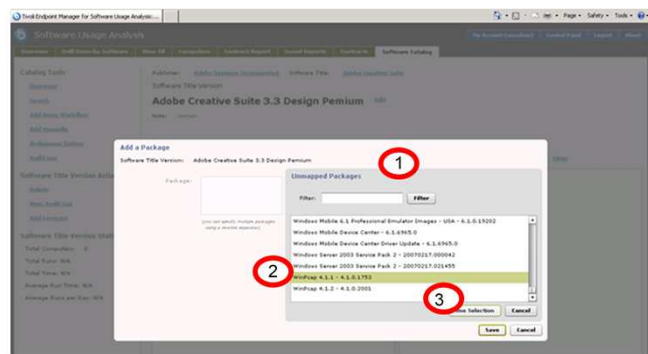
© 2013 IBM Corporation

The **Add Package** screen opens. You can either specify a custom package name, or you can click the **Discover Unmapped Package** button and choose from the unmapped packages that are discovered. Next, you map to a discovered unmapped package.

Mapping an unmapped package to a software title (1 of 2)

Perform these steps to add one of the unmapped packages to the software title:

1. View the list of available packages that are listed under **Unmapped Packages**
2. Select a package from the list of unmapped packages
3. Click the **Use Selection** button



9

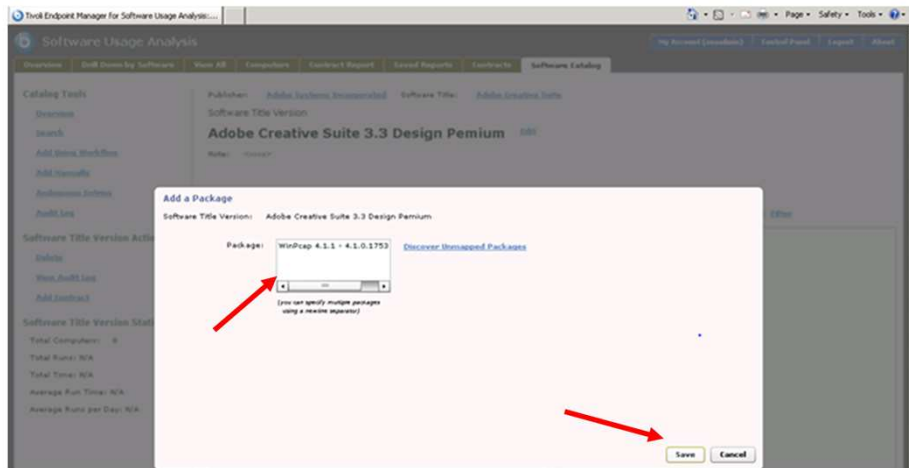
Manually adding new software titles to the software usage analysis catalog

© 2013 IBM Corporation

The **Add a Package Unmapped Packages** box opens. First look at the available unmapped package options. Choose the unmapped package name that you are interested in. In this example you have selected **WinPcap 4.1.1 – 4.1.0.1753** and clicked the **Use Selection** button.

Mapping an unmapped package to a software title (2 of 2)

A software package is now mapped to the software title. Click the **Save** button.



10

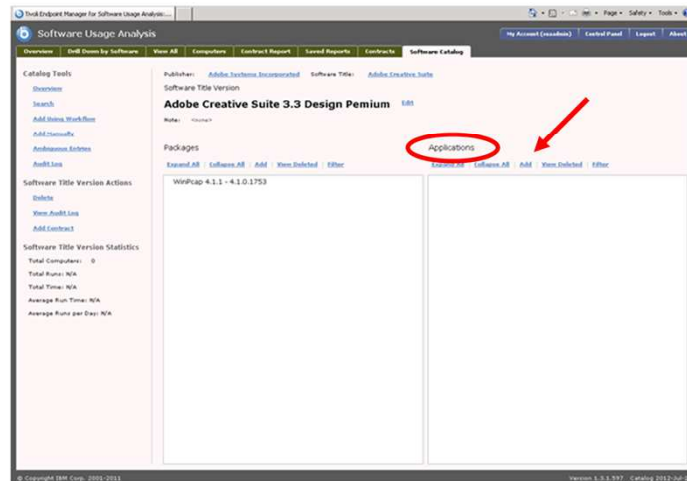
Manually adding new software titles to the software usage analysis catalog

© 2013 IBM Corporation

The **WinPcap 4.1.1 – 4.1.0.1753** has been added. Click **Save**.

Mapping an application to a software title (1 of 4)

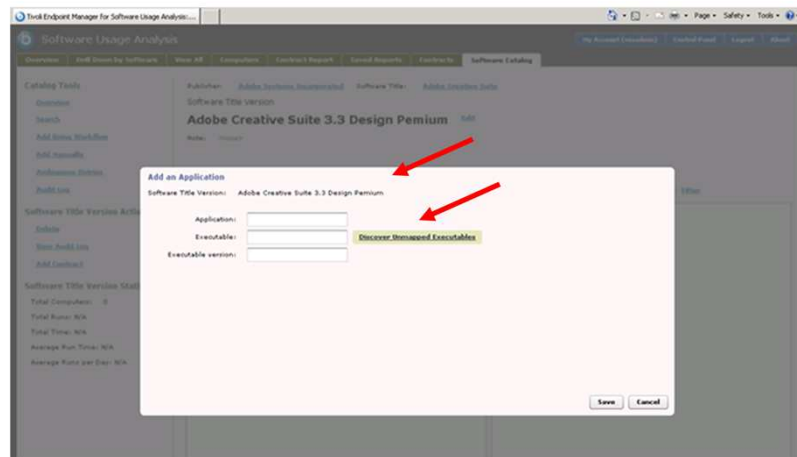
Click the **Add** button that is located under **Applications**



Now map an **Application**. To begin mapping applications to a software title, click the **Add** button under the Applications heading.

Mapping an application to a software title (2 of 4)

After observing for the correct software title, click the **Discovered Unmapped Executables** button.



12

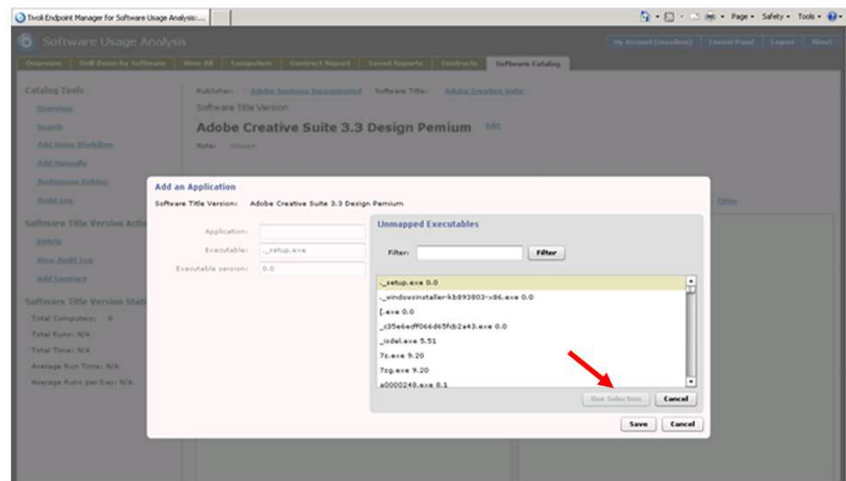
Manually adding new software titles to the software usage analysis catalog

© 2013 IBM Corporation

The **Add an Application** screen opens. Here on this slide you can see that the software title version is Adobe Creative Suite 3.3 Design Premium. Click the **Discovered Unmapped Executables** button.

Mapping an application to a software title (3 of 4)

Select executables and click the Use Selection button



13

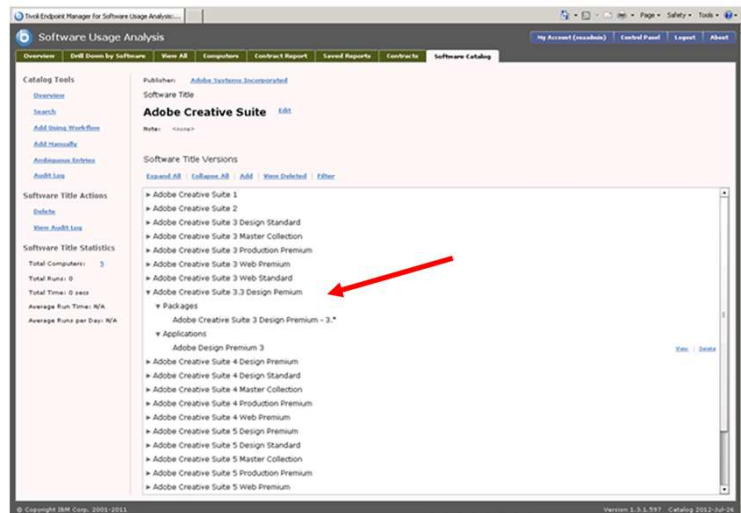
Manually adding new software titles to the software usage analysis catalog

© 2013 IBM Corporation

Select the executables. In this example you have selected the **._setup.exe.0.0** executable. Click the **Use Selection** button.

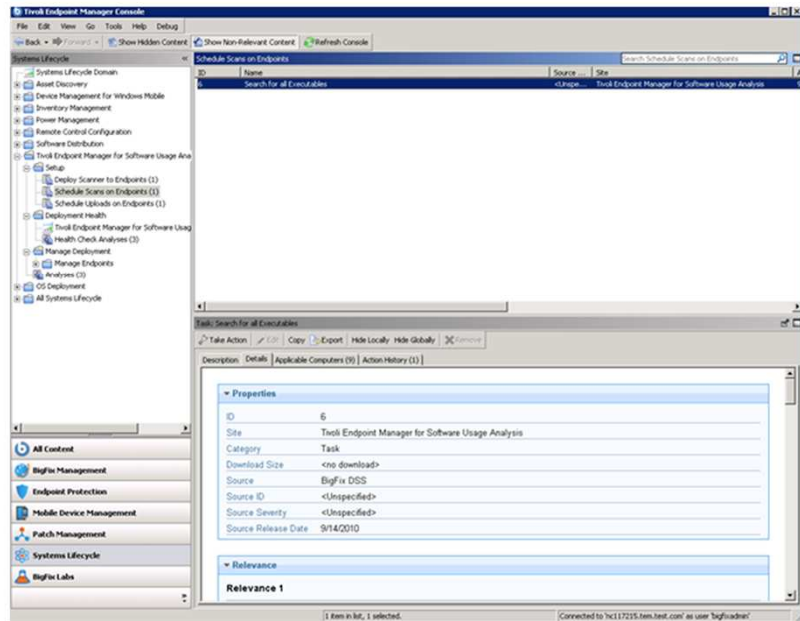
Reviewing the addition of a new software title

The new software title is now included in the software catalog with both packages and applications added



On this slide, you see that the new software title is included in the software catalog with packages and applications.

Scheduling endpoint scans



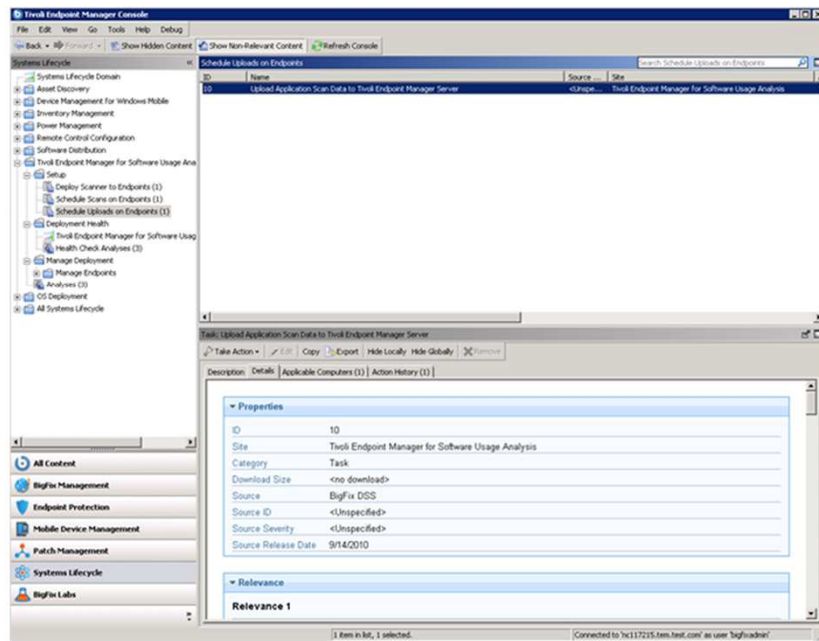
15

Manually adding new software titles to the software usage analysis catalog

© 2013 IBM Corporation

By default, this task will run once every seven days, unless you change the Execution parameter. The task refreshes the software inventory data available for the Tivoli Endpoint Manager for Software Usage Analysis application.

Scheduling endpoint uploads



16

Manually adding new software titles to the software usage analysis catalog

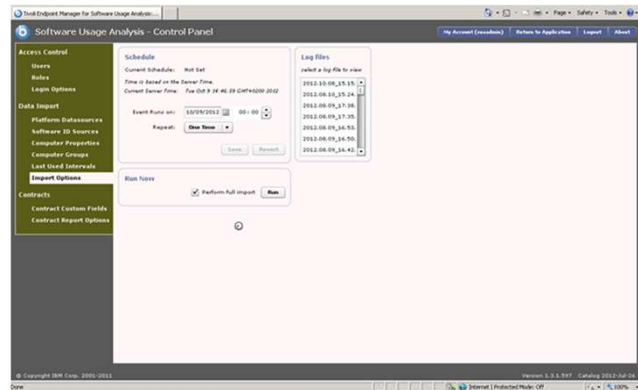
© 2013 IBM Corporation

By default, this task will run whenever relevant to ensure that the inventory files are uploaded as soon as the scan has completed. The Action Reapply settings are preset in Fixlet® Action Defaults. Pay attention to the action deployment options to ensure that the latest inventory data is available.

Scheduling and running software usage analysis full data imports

Follow these steps to schedule a full catalog import:

1. **Software Usage Analysis – Control Panel**
2. **Data Import > Import Options**
3. Set **Event Runs on:** and **Repeat:**
4. Check **Perform Full Import** and press the **Run** button



17

Manually adding new software titles to the software usage analysis catalog

© 2013 IBM Corporation

Perform a full catalog import from the Software Usage Analysis - Control Panel screen. To accomplish this task you must start at the **Software Usage Analysis – Control Panel** screen. Go to **Data Import > Import Options**. Set the **Event Runs on:** and **Repeat:** parameters, check **Perform Full Import**, and press the **Run** button.

Summary

Now that you have completed this training module, you can accomplish these tasks:

- Search for software titles to see if they are present within the IBM Tivoli Endpoint Manager V8.2 software catalog
- Add new software titles to the IBM Tivoli Endpoint Manager V8.2 software catalog
- Add new packages and applications to a software title listed in the IBM Tivoli Endpoint Manager V8.2 software catalog

Now that you have completed this training module, you can search for a software application by its title to see if it exists within the IBM Tivoli Endpoint Manager V8.2 software catalog. If the searched software title does not previously exist, then you can add that title to the software catalog.



Feedback

Your feedback is valuable

You can help improve the quality of IBM Education Assistant content to better meet your needs by providing feedback.

1. Did you find this module useful?
2. Did it help you solve a problem or answer a question?
3. Do you have suggestions for improvements?

Click to send email feedback:

mailto:iea@us.ibm.com?subject=Feedback_about_add_sw_manually_sua_catalog.ppt

This module is also available in PDF format at: [../add_sw_manually_sua_catalog.pdf](add_sw_manually_sua_catalog.pdf)

You can help improve the quality of IBM Education Assistant content by providing feedback.



Trademarks, disclaimer, and copyright information

IBM, the IBM logo, ibm.com, Fixlet, and Tivoli are trademarks or registered trademarks of International Business Machines Corp., registered in many jurisdictions worldwide. Other product and service names might be trademarks of IBM or other companies. A current list of other IBM trademarks is available on the web at "[Copyright and trademark information](http://www.ibm.com/legal/copytrade.shtml)" at <http://www.ibm.com/legal/copytrade.shtml>

Other company, product, or service names may be trademarks or service marks of others.

THE INFORMATION CONTAINED IN THIS PRESENTATION IS PROVIDED FOR INFORMATIONAL PURPOSES ONLY. WHILE EFFORTS WERE MADE TO VERIFY THE COMPLETENESS AND ACCURACY OF THE INFORMATION CONTAINED IN THIS PRESENTATION, IT IS PROVIDED "AS IS" WITHOUT WARRANTY OF ANY KIND, EXPRESS OR IMPLIED. IN ADDITION, THIS INFORMATION IS BASED ON IBM'S CURRENT PRODUCT PLANS AND STRATEGY, WHICH ARE SUBJECT TO CHANGE BY IBM WITHOUT NOTICE. IBM SHALL NOT BE RESPONSIBLE FOR ANY DAMAGES ARISING OUT OF THE USE OF, OR OTHERWISE RELATED TO, THIS PRESENTATION OR ANY OTHER DOCUMENTATION. NOTHING CONTAINED IN THIS PRESENTATION IS INTENDED TO, NOR SHALL HAVE THE EFFECT OF, CREATING ANY WARRANTIES OR REPRESENTATIONS FROM IBM (OR ITS SUPPLIERS OR LICENSORS), OR ALTERING THE TERMS AND CONDITIONS OF ANY AGREEMENT OR LICENSE GOVERNING THE USE OF IBM PRODUCTS OR SOFTWARE.

© Copyright International Business Machines Corporation 2013. All rights reserved.