



IBM Software Group – IBM Tivoli Training

IBM Tivoli® Storage Manager

Identifying Backup Sets

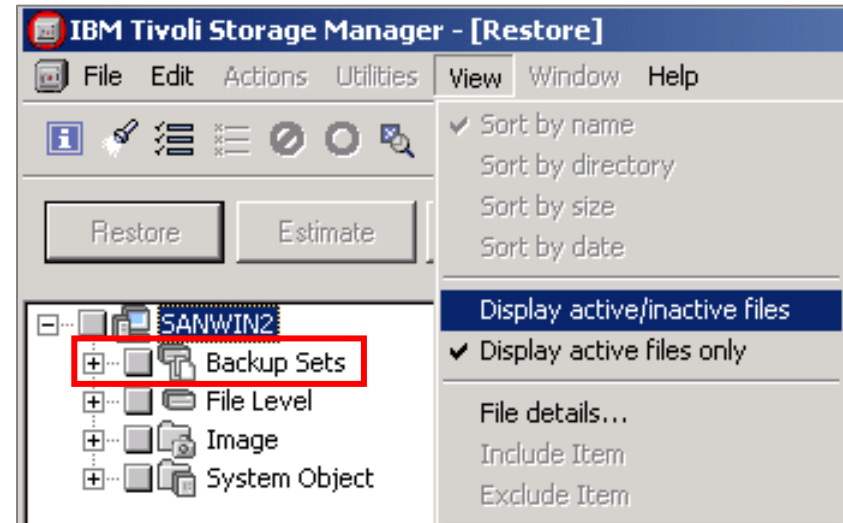


@business on demand.

© 2006 IBM Corporation
Updated October 11, 2006

Identifying Backup Sets

With the Tivoli Storage Manager Backup-Archive graphical user interface, or GUI, you can view a list of available backup sets.



With the Tivoli Storage Manager command line, you can issue the following commands:

query backupset or

query backupsetcontents commands.

query backupset

Display information for backup sets whose names begin with Lab_Test*. The backup sets belong to client node XYZ and are assigned to the FILE device class.

Command: `query backupset xyz lab_test*`

Results:

Node Name:	XYX
Backup Set Name:	LAB_TEST.3424
Date/Time:	04/14/2004 09:48:16
Retention Period:	90
Device Class Name:	FILE
Description:	Backup set of lab tests

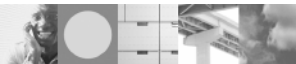
query backupsetcontents

Display the contents from backup set named LAB_TEST.3424 belonging to client node XYZ.

Command: `query backupsetcontents xyz lab_test.3424`

Results:

Node Name	Filespace Name	Client's Name for File
XYZ	/srvr	/disoln_test.xls
XYZ	/srvr	/DT_test.doc
XYZ	/srvr	/friab_test.doc
XYZ	/srvr	/labtest.log



Trademarks, Copyrights, and Disclaimers

The following terms are trademarks or registered trademarks of International Business Machines Corporation in the United States, other countries, or both:

IBM
IBM (logo)
e (logo) business
AIX

CICS
Cloudscape
DB2
DB2 Universal Database

IMS
Informix
iSeries
Lotus

MQSeries
OS/390
OS/400
pSeries

Tivoli
WebSphere
xSeries
zSeries

Java and all Java-based trademarks are trademarks of Sun Microsystems, Inc. in the United States, other countries, or both.

Microsoft, Windows, Windows NT, and the Windows logo are registered trademarks of Microsoft Corporation in the United States, other countries, or both.

Intel, ActionMedia, LANDesk, MMX, Pentium and ProShare are trademarks of Intel Corporation in the United States, other countries, or both.

UNIX is a registered trademark of The Open Group in the United States and other countries.

Linux is a registered trademark of Linus Torvalds.

Other company, product and service names may be trademarks or service marks of others.

Product data has been reviewed for accuracy as of the date of initial publication. Product data is subject to change without notice. This document could include technical inaccuracies or typographical errors. IBM may make improvements and/or changes in the product(s) and/or program(s) described herein at any time without notice. Any statements regarding IBM's future direction and intent are subject to change or withdrawal without notice, and represent goals and objectives only. References in this document to IBM products, programs, or services does not imply that IBM intends to make such products, programs or services available in all countries in which IBM operates or does business. Any reference to an IBM Program Product in this document is not intended to state or imply that only that program product may be used. Any functionally equivalent program, that does not infringe IBM's intellectual property rights, may be used instead.

Information is provided "AS IS" without warranty of any kind. THE INFORMATION PROVIDED IN THIS DOCUMENT IS DISTRIBUTED "AS IS" WITHOUT ANY WARRANTY, EITHER EXPRESS OR IMPLIED. IBM EXPRESSLY DISCLAIMS ANY WARRANTIES OF MERCHANTABILITY, FITNESS FOR A PARTICULAR PURPOSE OR NONINFRINGEMENT. IBM shall have no responsibility to update this information. IBM products are warranted, if at all, according to the terms and conditions of the agreements (e.g., IBM Customer Agreement, Statement of Limited Warranty, International Program License Agreement, etc.) under which they are provided. Information concerning non-IBM products was obtained from the suppliers of those products, their published announcements or other publicly available sources. IBM has not tested those products in connection with this publication and cannot confirm the accuracy of performance, compatibility or any other claims related to non-IBM products. IBM makes no representations or warranties, express or implied, regarding non-IBM products and services.

The provision of the information contained herein is not intended to, and does not, grant any right or license under any IBM patents or copyrights. Inquiries regarding patent or copyright licenses should be made, in writing, to:

IBM Director of Licensing
IBM Corporation
North Castle Drive
Armonk, NY 10504-1785
U.S.A.

Performance is based on measurements and projections using standard IBM benchmarks in a controlled environment. All customer examples described are presented as illustrations of how those customers have used IBM products and the results they may have achieved. The actual throughput or performance that any user will experience will vary depending upon considerations such as the amount of multiprogramming in the user's job stream, the I/O configuration, the storage configuration, and the workload processed. Therefore, no assurance can be given that an individual user will achieve throughput or performance improvements equivalent to the ratios stated here.

© Copyright International Business Machines Corporation 2006. All rights reserved.

Note to U.S. Government Users - Documentation related to restricted rights-Use, duplication or disclosure is subject to restrictions set forth in GSA ADP Schedule Contract and IBM Corp.